



# SIMULTANEOUS FRACTURING (SIMUL-FRAC)

*Introduction*



# FORWARD-LOOKING STATEMENTS

*This material and any oral statements made in connection with this material include “forward-looking statements” within the meaning of the Securities Act of 1933 and the Securities Exchange Act of 1934. Statements made which provide the Company’s or management’s intentions, beliefs, expectations or predictions for the future are forward-looking statements and are inherently uncertain. The opinions, forecasts, projections or other statements other than statements of historical fact, including, without limitation, plans and objectives of management of the Company are forward-looking statements. It is important to note that actual results could differ materially from those discussed in such forward-looking statements. Important factors that could cause actual results to differ materially include the risk factors and other cautionary statements contained from time to time in the Company’s SEC filings, which may be obtained by contacting the Company or the SEC. These filings are also available through the Company’s web site at <http://www.patenergy.com> or through the SEC’s Electronic Data Gathering and Analysis Retrieval System (EDGAR) at <http://www.sec.gov>. We undertake no obligation to publicly update or revise any forward-looking statement. Statements made in this presentation include non-U.S. GAAP financial measures. The required reconciliation to U.S. GAAP financial measures are included on our website and/or at the end of this presentation.*



# OUR HISTORY

## WHERE WE ARE NOW



1980

First frac job

2004

Industry first vertical Marcellus slick water frac

2006

Industry first horizontal Marcellus slick water frac

2010

PTEN acquires Key Energy Services' pressure pumping assets

2014

Acquisitions of Torqued Up and Platinum Energy Services

2017

Acquisition of Seventy Seven Energy

2019

Completed longest lateral in Permian Basin

2020

Celebrating 40 Years

TODAY

TODAY

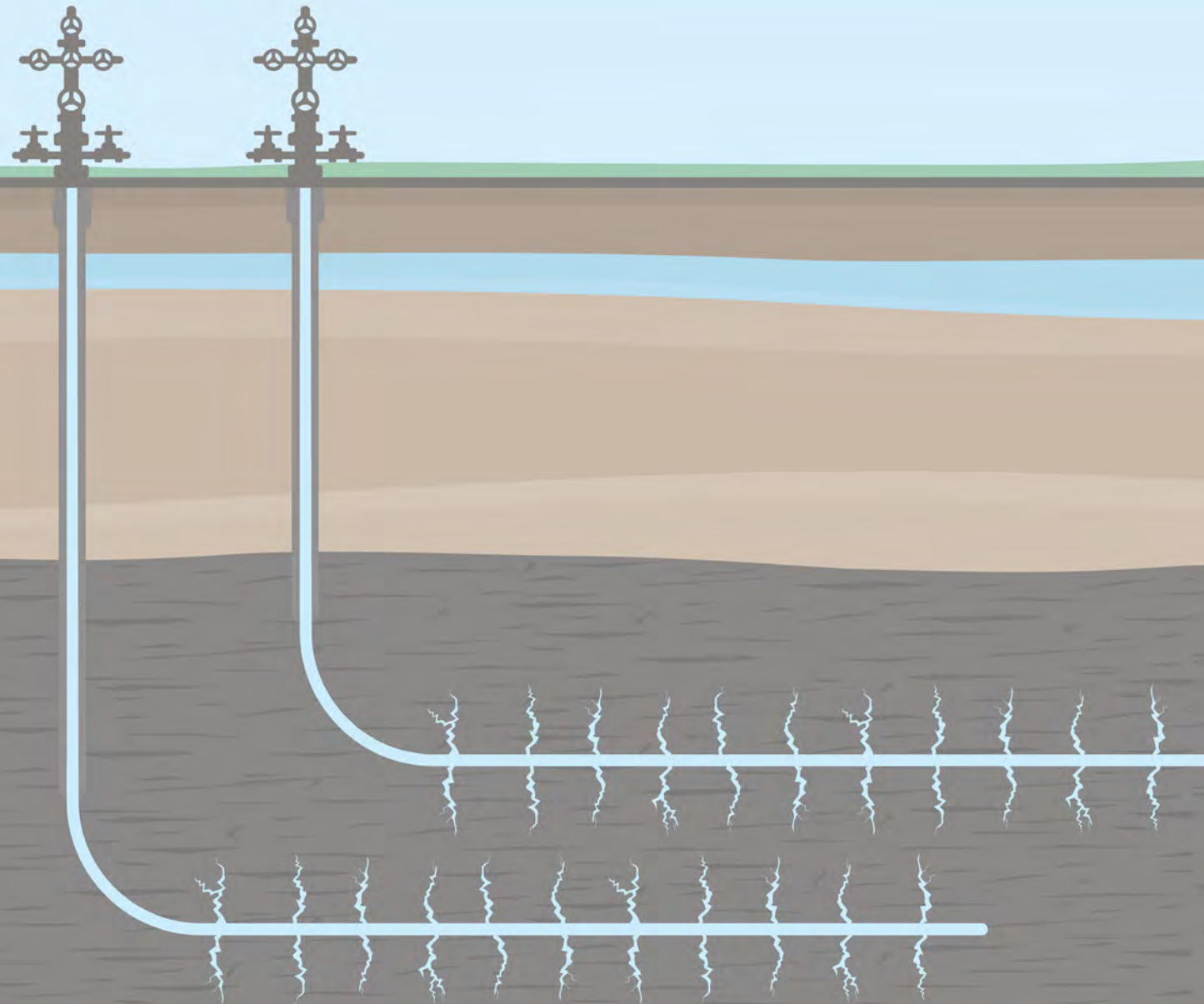
**1.3** MM TOTAL HHP

**9** ACTIVE FRAC SPREADS

**10** PLUS YEARS DUAL FUEL EXPERIENCE

**50** PERCENT OF ACTIVE FLEET DUAL FUEL

# SIMUL-FRAC BASICS



## 1 *ONE ENHANCED FRAC SPREAD*

- Simultaneous hydraulic fracturing of two wells located on the same well pad
- Historically, simul-frac utilized two complete frac spreads
- Universal's process utilizes one enhanced frac spread
- Overall rate to the pumping system is between 120 bpm and 160 bpm. This rate is evenly split between both wells.

# IMPERATIVES FOR SIMUL-FRAC SUCCESS



## **GEOLOGY**

Reservoir quality  
balanced with Simul-Frac  
job design



## **GEOMETRY**

Surface - Wellhead  
layout on pad  
Subsurface - Wellbore  
pairs in the same horizon



## **LOGISTICS**

Uninterrupted Operations  
at 50% higher product  
consumption

## **EXECUTE WITH ESG LEADERSHIP**



**EcoVerse™** is the versatile family of eco-friendly solutions Universal offers for your pressure pumping needs.



**EcoBase™**  
Dual Fuel equipment capable of instantaneous substitution up to 70%



**EcoPlus™**  
Dual Fuel equipment capable of instantaneous substitution up to 85%

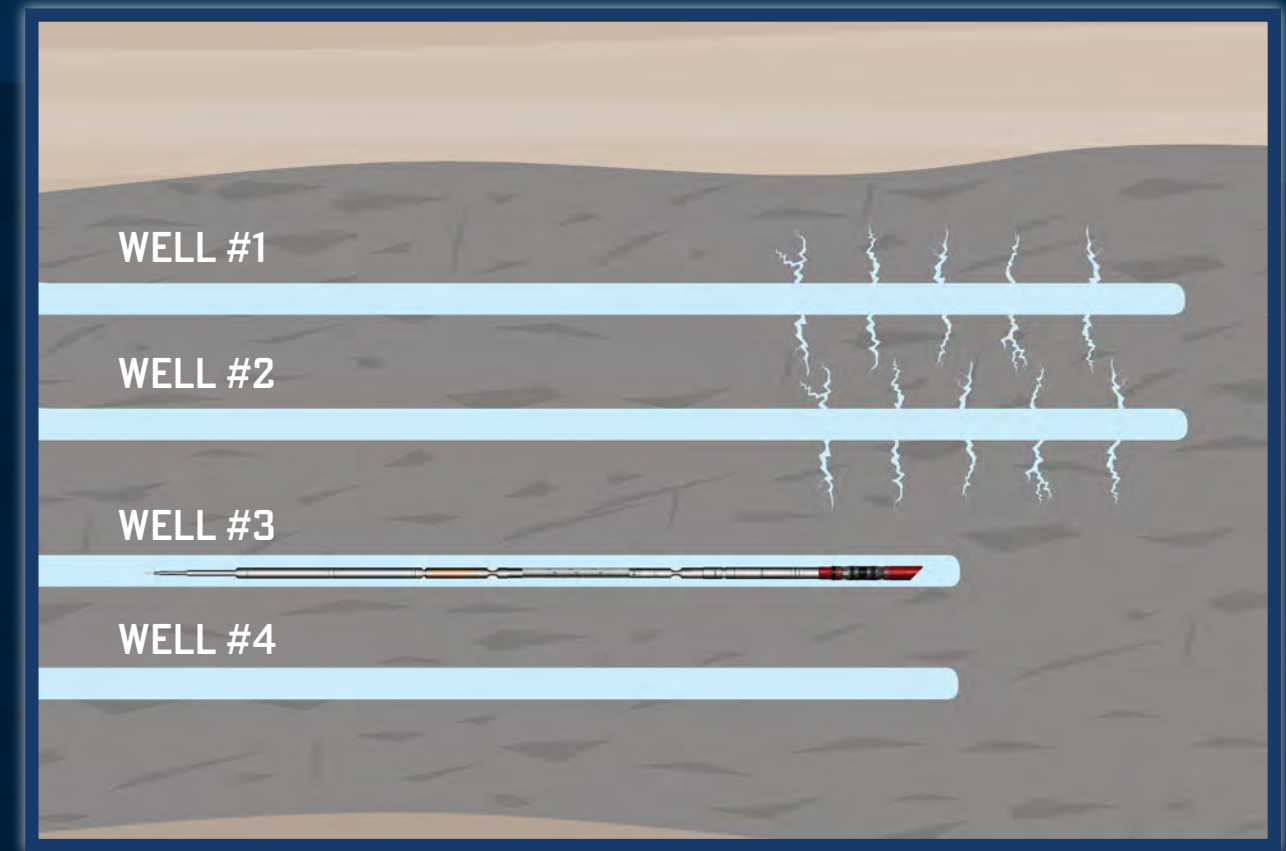


**EcoStart™**  
Fully automated engine idle reduction system

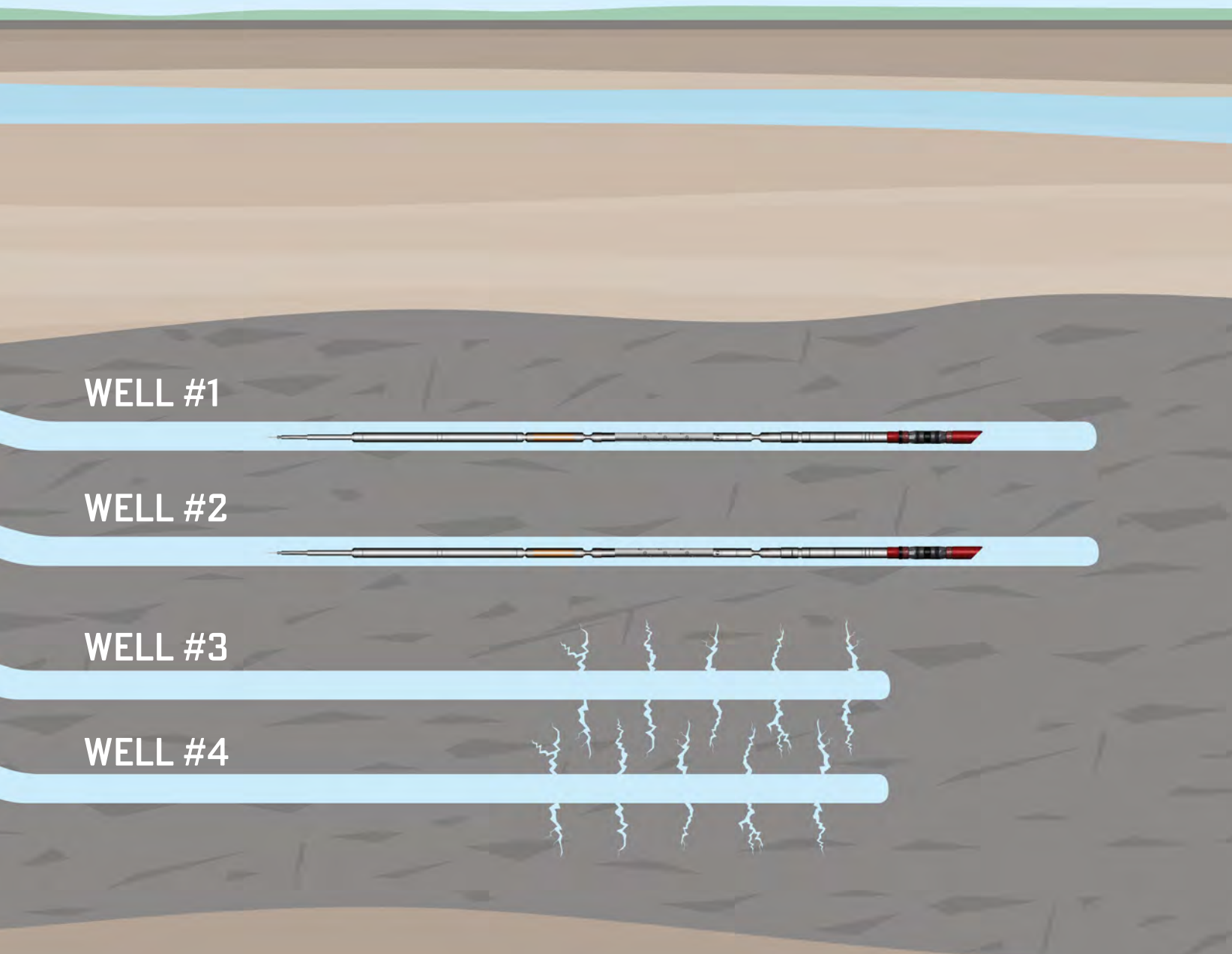
# EXAMPLE SEQUENCE OF ZIPPER FRAC



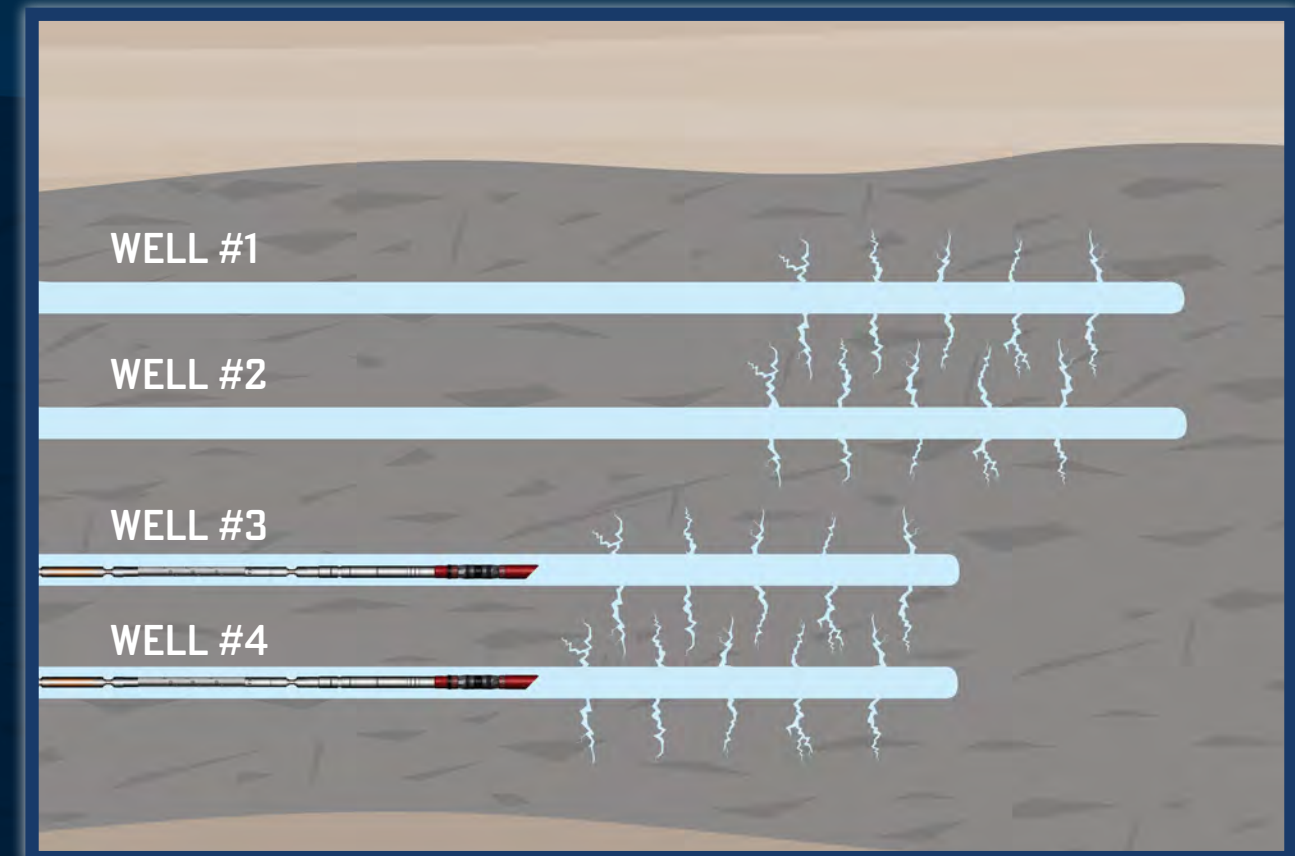
- Fracturing one well at a time
- Plug and Perforation performed in one well
- Frac and Wireline "ping pong" between the available wells



# EXAMPLE SEQUENCE OF SIMUL-FRAC



- Fracturing two wells simultaneously
- Plug and Perforation performed in two wells simultaneously
- Frac and Wireline "ping pong" between well pairs



# RIG UP COMPARISON

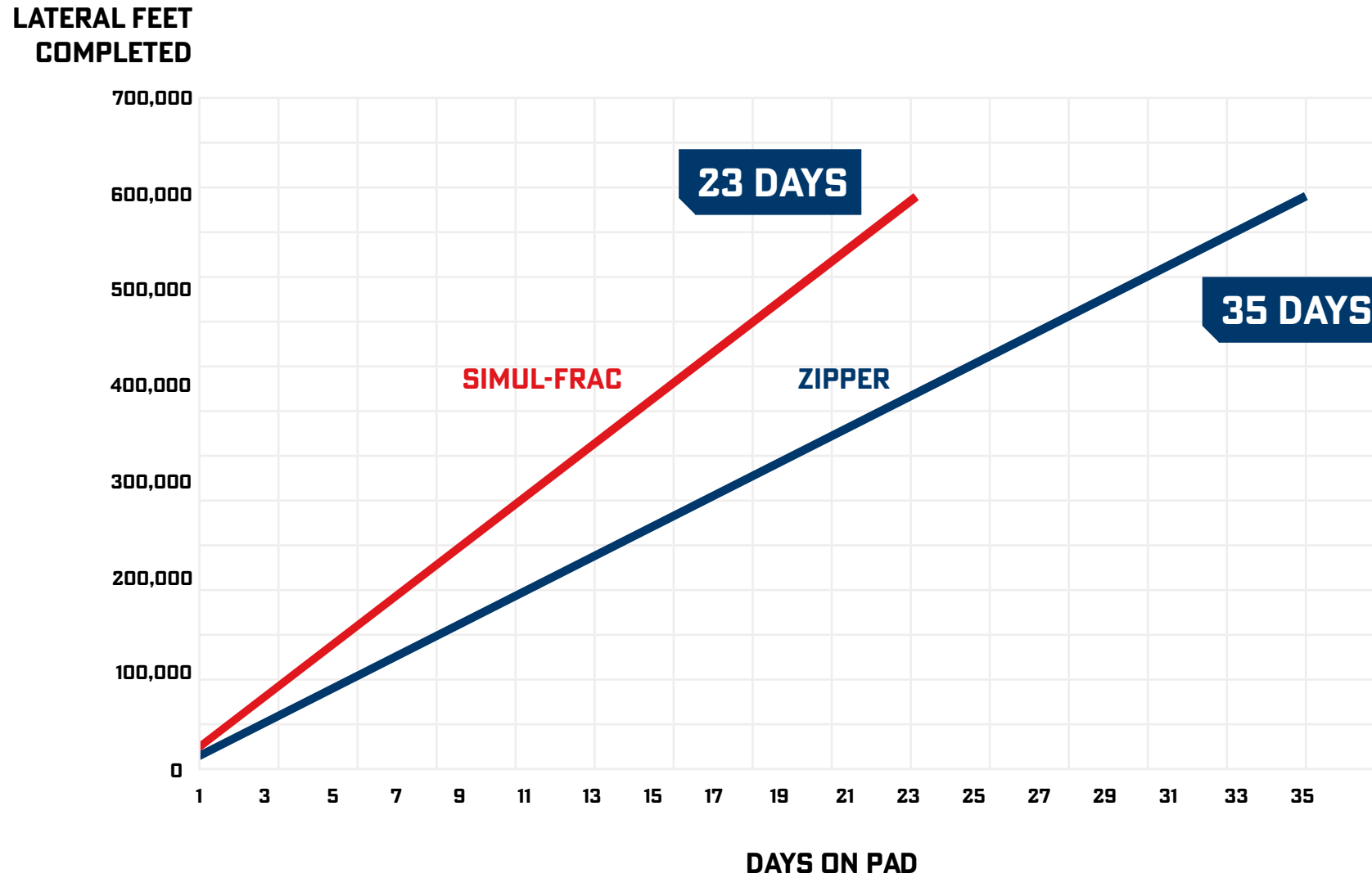
The image shows an aerial comparison of two oil field rig up sites. On the left is the SIMUL-FRAC site, and on the right is the ZIPPER site. A central column lists the differences between the two. Red lines connect the text to the SIMUL-FRAC site, and blue lines connect the text to the ZIPPER site. The SIMUL-FRAC site is characterized by a large, rectangular 'Dance Floor' for sand delivery, a high density of 28 pumping units, two monolines, and two wireline units with cranes. The ZIPPER site features a smaller, more compact 'Dance Floor', 19 pumping units, one monoline, and one wireline unit with a crane.

SIMUL-FRAC	VS.	ZIPPER
Larger Sand Delivery "Dance Floor"		Smaller Sand Delivery "Dance Floor"
28 x Pumping Units		19 x Pumping Units
2 x Monolines		1 x Monoline
2 x Wireline Units and 2 x Cranes		1 x Wireline Unit and 1 x Crane

SIMUL-FRAC

ZIPPER

# COMPLETIONS TIMELINE



## *SIMUL-FRAC VS. ZIPPER*

- Simul-Frac operations typically have more stages as compared to single well or Zipper operations
- Stage interval spacing is reduced for simul-frac to better normalize the stimulation / lateral ft.



# IMPACT OF SIMUL-FRAC

## STORAGE

Larger onsite storage capacity needed for proppant

## WATER

Increased water supply demand

## PAD SIZE

Increased pad size may be required based on well spacing

## EQUIPMENT

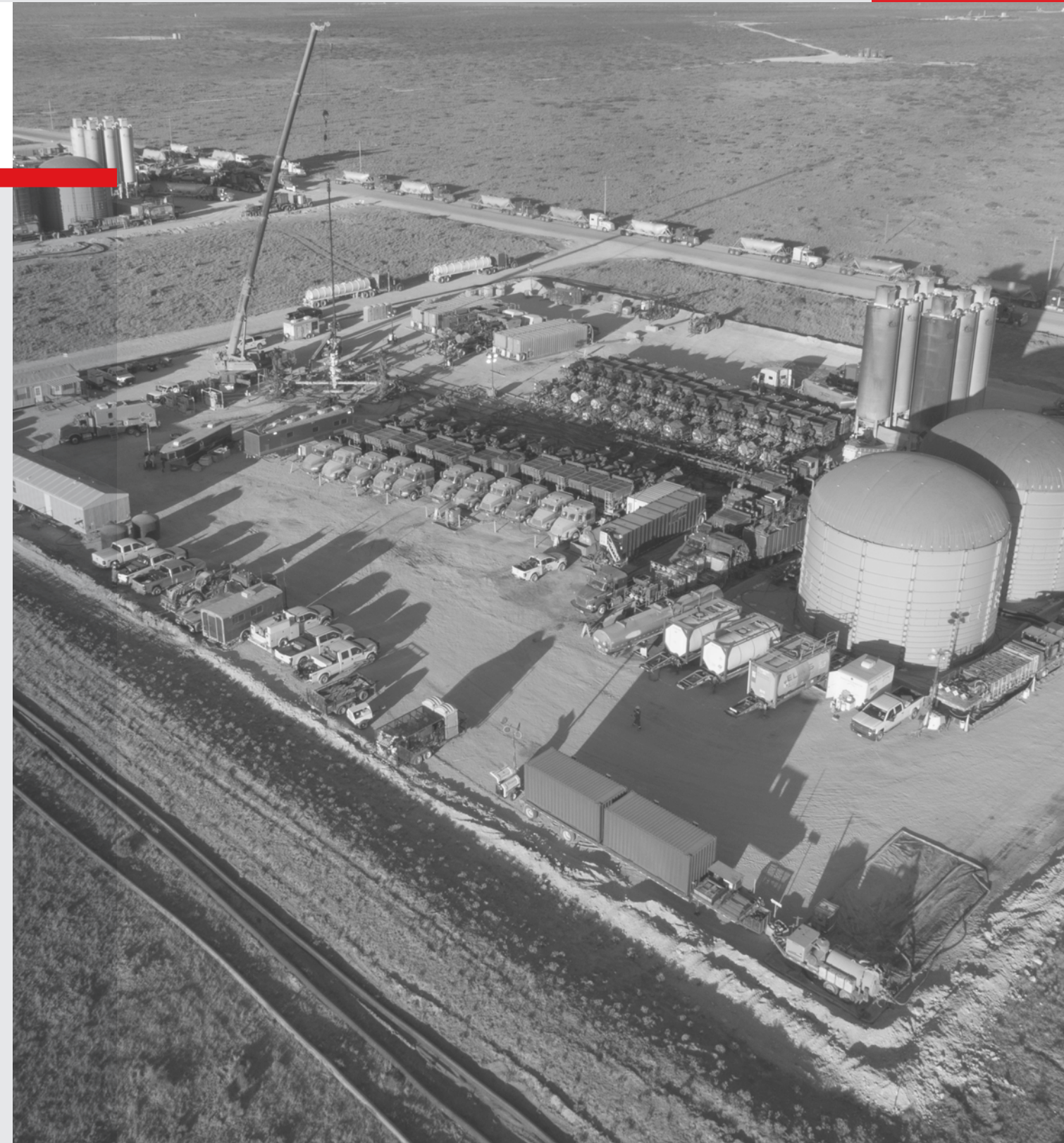
Pump down and Wireline equipment double

## SUPPORT

Enhanced Real-time support

## SERVICE

Enhanced Job Planning and Technical Services



# SIMUL-FRAC KEY TAKEAWAYS

**50%**



**LATERAL FEET  
TREATED/DAY**

**22%**



**HORSEPOWER  
PER WELLBORE**

**30%**



**DAYS ON PAD**

- WELL PRODUCTION BROUGHT FORWARD - EARLY CASH FLOW
- OPTIMIZED HORSEPOWER, CREW AND R&M, EQUIPMENT UTILIZATION
- OVERALL EFFICIENCY GAINS FOR THE RIGHT CANDIDATE WELLS

**G**

**GEOLOGY**

**G**

**GEOMETRY**

**L**

**LOGISTICS**

An aerial photograph of an industrial facility, possibly a refinery or chemical plant, with a red color overlay. The facility includes several large storage tanks, distillation columns, and various industrial buildings. A large crane is visible in the foreground. The word "UNIVERSAL" is prominently displayed in white, bold, sans-serif capital letters across the center of the image. To the left of the text is a white circular logo containing a stylized 'U' shape.

# UNIVERSAL

UNIVERSAL IS A SUBSIDIARY COMPANY OF

