



Accelerating science.
Transforming health.
Expanding human potential.

This is Revvity.

A proven history.

We're committed to revolutionizing the future of health. Working together with our customers, we're making an impact by addressing some of the world's greatest health challenges:

<p>Delivering solutions and services used by 47 of the top 50 global pharmaceutical companies</p> <p>94%</p>	<p>More than 550 recognitions for the T-SPOT.TB test in peer reviewed publications as demonstrating excellent performance in clinical and epidemiological settings</p> <p>550+</p>	
<p>1.5K</p> <p>Introducing over 1,500 new antibodies, kits, and reagents for life science research annually</p>	<p>2M</p> <p>Supplying Revvity's software solutions to more than two million scientists across pharma, biotech, and academia</p>	<p>800M</p> <p>Approximately 800 million babies screened cumulatively for life-threatening diseases across 110 countries</p>

Embracing the impossible.

At Revvity, "impossible" is inspiration.

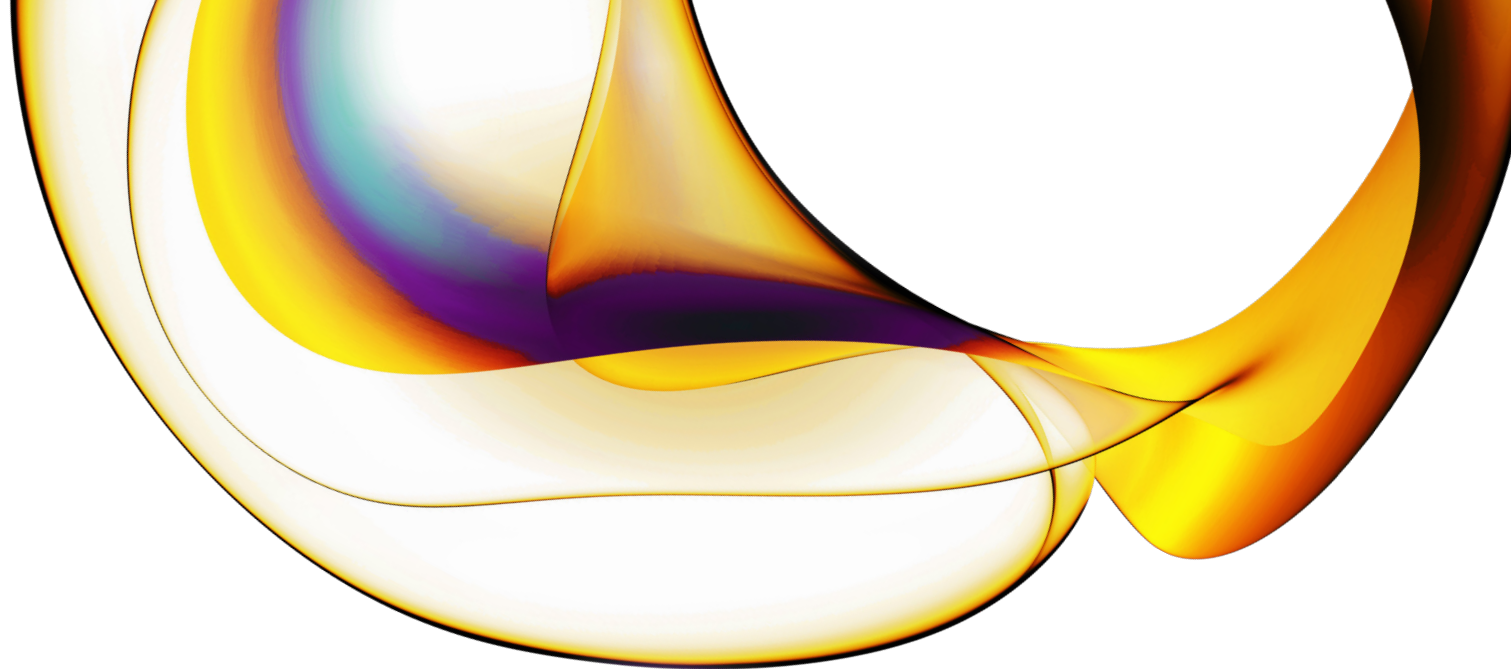
We provide health science solutions, technologies, expertise, and services that deliver complete workflows from discovery to development, and diagnosis to cure.

Revvity is pushing the limits of what's possible in healthcare, with specialized focus areas in translational multi-omics technologies, biomarker identification, imaging, prediction, screening, detection and diagnosis, informatics, and more.

Every day, our 11,000+ employees collaborate to pioneer groundbreaking solutions that enable our customers to improve health outcomes around the world. With a robust global network and localized agility, we serve a diverse range of organizations from pharmaceutical and biotech, to clinical labs, academia, and governments.

No challenge is too great for our team. Together with our customers and partners, we are united in impact, embracing the impossible to improve lives everywhere.

<p>Founded: 2023</p>
<p>President and CEO: Prahlad Singh</p>
<p>Headquarters: 940 Winter Street Waltham, MA 02451</p>
<p>Part of the S&P 500 Index</p>
<p>NYSE Listed</p>



Our specialized areas of focus include:



Translational
multi-omics
technologies



Screening



Biomarker
identification



Detection
and diagnosis



Imaging



Informatics



Prediction



Customized
offerings

Revvity brand portfolio includes:



Pioneering what's next.

What if the benefits of leading-edge health science were accessible to everyone, everywhere? We're committed to making this vision a reality by addressing the biggest threats to health today, and fearlessly facing tomorrow's unknowns.

Our scope, reach and ability to make an impact has never been greater.

Groundbreaking therapies. Breakthrough treatments. Revolutionary solutions. All in the name of our purpose: **to expand the boundaries of human potential through science.**

Bring on tomorrow. We're ready for it.

