

ArchiTech®

FURNACE PRODUCTIVITY SYSTEM

6.0

ArchiTech® System Key Features:

- Electrode consumption tracking
- Automated alerting
- Automated reporting
- Column build torque monitoring
- Inventory assistance

ArchiTech® System Is:

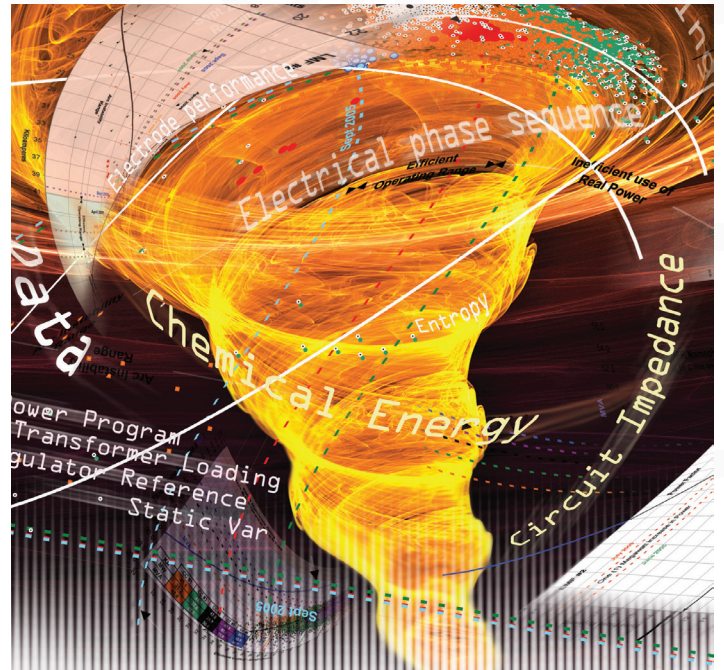
- 24/7/365 advanced high-speed EAF diagnostic, analysis and reporting system
- Complements existing supervisory systems
- Small, self-contained, scalable, easy to install and supported by customer technical service representatives

ArchiTech® System Helps Customers To:

- Increase productivity
- Reduce cost
- Diagnose and analyze problems
- Reduce unscheduled downtime
- Identify regulation issues

What ArchiTech® System Does For You:

- Real-time data analysis and comprehensive diagnostics
- Continuous remote service connection
- Assists with decision-making
- Email alert notification



GrafTrack® System:

GrafTrack
SYSTEM

- Automated electrode usage tracking
- Inventory assistance tools
- Automated reporting
- Barcode scanning option now available

GrafTorque® System:

GrafTorque
SYSTEM

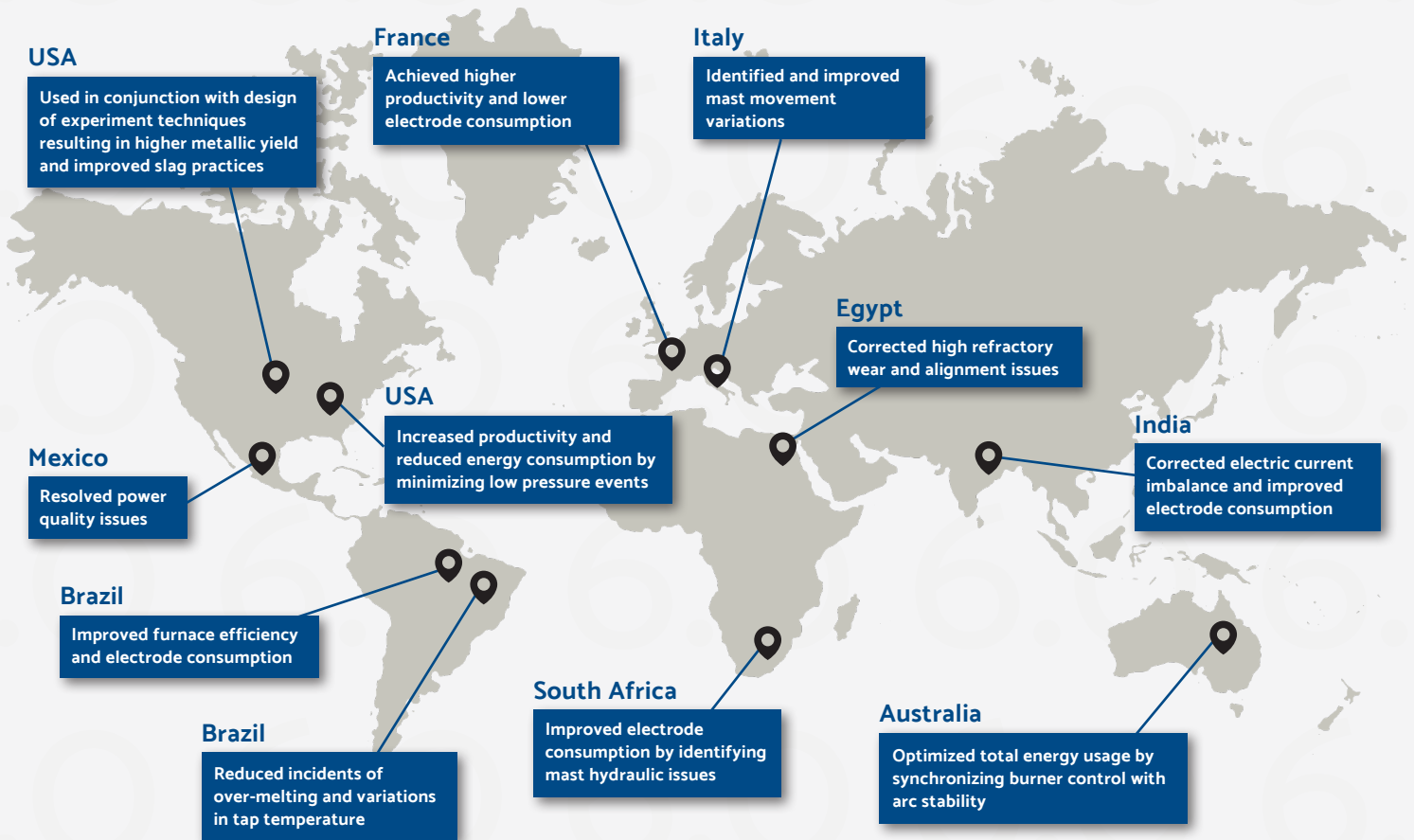
- Automated column build tracking
- Analytical alerts on suspected bad build
- ArchiTech portal reporting
- Realtime feedback of results

High-Speed Diagnostics | Remote Troubleshooting | Statistical Analysis | Benchmarking

ArchiTech®

FURNACE PRODUCTIVITY SYSTEM

More Than 250 Installations in Over 45 Countries
Examples of ArchiTech® benefits observed by customers



Inquire about the ArchiTech® Furnace Productivity System 6.0 today - architech@graftech.com

Contact Us

+1-216-676-2000 | +41-21-821-3111 | www.graftech.com

GRAF*Tech*
International

THE INFORMATION IN THIS PUBLICATION AND THE ARCHITECH® SYSTEM ARE PROVIDED "AS IS" WITHOUT ANY WARRANTIES OF ANY KIND INCLUDING WARRANTIES OF MERCHANTABILITY, FITNESS FOR A PARTICULAR PURPOSE, OR NON-INFRINGEMENT OF INTELLECTUAL PROPERTY. NO ADVICE OR INFORMATION, WHETHER ORAL OR WRITTEN, OBTAINED BY YOU FROM GRAFTECH INTERNATIONAL HOLDINGS INC. ("GRAFTECH") OR THROUGH OR FROM USE OF THE SYSTEM SHALL CREATE ANY WARRANTY NOT EXPRESSLY STATED IN THE ARCHITECH® TERMS OF USE, A COMPLETE COPY OF WHICH IS AVAILABLE UPON REQUEST. GRAFTECH'S LIABILITY IS EXPRESSLY LIMITED TO ITS TERMS AND CONDITIONS OF SALE. Changes are periodically added to the information contained herein. GrafTech may make improvements and/or changes in the product(s) and/or services described in this publication at any time. No portion of this material may be reprinted in any form without the express written permission of GrafTech. GrafTorque® is a registered trademark of GrafTech International Holdings Inc. in the European Union and an application for trademark registration is pending in the United States. ArchiTech® and GrafTrack® are protected by certain patents in the U.S. and elsewhere. For more information visit our website at www.graftech.com/patents. GrafTorque® has a patent pending in the United States and elsewhere. ©2025 GrafTech International Holdings Inc.