



# CÔTÉ GOLD MINE INVESTOR TOUR

June 2026

**IAMGOLD**® | **MINING.  
REDEFINED.**

# CAUTIONARY STATEMENT

All information included or incorporated by reference in this presentation, including any information as to the Company's vision, strategy, future financial or operating performance and other statements that express management's expectations or estimates of future performance or impact, including statements in respect of the prospects and/or development of the Company's projects, other than statements of historical fact, constitutes forward-looking information or forward-looking statements within the meaning of applicable securities laws (collectively referred to herein as "forward-looking statements") and such forward-looking statements are based on expectations, estimates and projections as of the date of this presentation. Forward-looking statements are generally identifiable by the use of words such as "may", "will", "should", "would", "could", "continue", "expect", "budget", "aim", "can", "focus", "forecast", "anticipate", "estimate", "maintain", "believe", "intend", "plan", "schedule", "guidance", "outlook", "potential", "seek", "targets", "cover", "strategy", "during", "ongoing", "subject to", "future", "objectives", "opportunities", "committed", "prospective", "likely", "progress", "strive", "sustain", "effort", "extend", "remain", "pursue", "predict", or "project" or the negative of these words or other variations on these words or comparable terminology.

For example, forward-looking statements in this presentation include, without limitation, those under the headings "Overview", "Operating Highlights", "Production", "Financial Highlights", "Operations", "Côté Gold Expansion", "Westwood Complex – Costs", "Nelligan Mining Complex", "Gold Mineral Reserves" and "Gold Mineral Resources" and include, but are not limited to, statements with respect to: the estimation of mineral reserves and mineral resources and the realization of such estimates; operational and financial performance including the Company's guidance for and actual results of production, environmental, social and governance performance, costs and capital and other expenditures such as exploration and including depreciation expense and effective tax rate; expected benefits from the operational improvements and de-risking strategies implemented or to be implemented by the Company; mine development activities; the Company's capital allocation and liquidity; the composition of the Company's portfolio of assets including its operating mines, development and exploration projects; permitting timelines and the expected receipt of permits; inflation, including global inflation and inflationary pressures; global supply chain constraints; environmental verification, biodiversity and social development projects; plans, targets, proposals and strategies with respect to sustainability, including third party data on which the Company relies, and their implementation; commitments with respect to sustainability and the impact thereof; the development of the Company's Water Management Standard; commitments with respect to biodiversity; commitments related to social performance, including commitments in furtherance of Indigenous relations; the ability to secure alternative sources of consumables of comparable quality and on reasonable terms; workforce and contractor availability, labour costs and other labour impacts; the impacts of weather; the future price of gold and other commodities; foreign exchange rates and currency fluctuations; financial instruments; hedging strategies; impairment assessments and assets carrying values estimates; safety and security concerns in the jurisdictions in which the Company operates and the impact thereof on the Company's operational and financial performance and financial condition; government regulation of mining operations (including the Competition Act (Canada) and the regulations associated with the fight against climate change), and statements regarding IAMGOLD's intention to commence an NCIB program and the timing.

The Company cautions the reader that forward-looking statements are necessarily based upon a number of estimates and assumptions that, while considered reasonable by management, are inherently subject to significant business, financial, operational and other risks, uncertainties, contingencies and other factors, including those described below, which could cause actual results, performance or achievements of the Company to be materially different from results, performance or achievements expressed or implied by such forward-looking statements and, as such, undue reliance must not be placed on them. Forward-looking statements are also based on numerous material factors and assumptions, including as described in this presentation, including with respect to: the Company's present and future business strategies; operations performance within expected ranges; anticipated future production and cash flows; local and global economic conditions and the environment in which the Company will operate in the future; the price of precious metals, other minerals and key commodities; projected mineral grades; international exchanges rates; anticipated capital and operating costs; the availability and timing of required governmental and other approvals for the construction of the Company's projects.

Risks, uncertainties, contingencies and other factors that could cause actual results, performance or achievements of the Company to be materially different from results, performance or achievements expressed or implied by such forward-looking statements include, without limitation: the Company's business strategies and its ability to execute thereon; the development and execution of implementing strategies to meet the Company's sustainability vision and targets; security risks, including civil unrest, war or terrorism and disruptions to the Company's supply chain and transit routes as a result of such security risks, particularly in Burkina Faso and the Sahel region surrounding the Company's Essakane mine; the availability of labour and qualified contractors; the availability of key inputs for the Company's operations and disruptions in global supply chains; the volatility of the Company's securities; litigation; contests over title to properties, particularly title to undeveloped properties; mine closure and rehabilitation risks; the lack of availability of insurance covering all of the risks associated with a mining company's operations; unexpected geological conditions; competition and consolidation in the mining sector; the profitability of the Company being highly dependent on the condition and results of the mining industry as a whole, and the gold mining industry in particular; changes in the global prices for gold, and commodities used in the operation of the Company's business (including, but not limited to diesel, fuel oil and electricity); legal, litigation, legislative, political or economic risks and new developments in the jurisdictions in which the Company carries on business, including the imposition of tariffs by the United States on Canadian products; changes in taxes, including mining tax regimes; the failure to obtain in a timely manner from authorities key permits, authorizations or approvals necessary for transactions, exploration, development or operation, operating or technical difficulties in connection with mining or development activities, including geotechnical difficulties and major equipment failure; the availability of capital; the level of liquidity and capital resources; access to capital markets and financing; the Company's level of indebtedness; the Company's ability to satisfy covenants under its credit facilities; changes in interest rates; adverse changes in the Company's credit rating; the Company's choices in capital allocation; effectiveness of the Company's ongoing cost containment efforts; the Company's ability to execute on de-risking activities and measures to improve operations; availability of specific assets to meet contractual obligations; risks related to third-party contractors, including reduced control over aspects of the Company's operations and/or the failure and/or the effectiveness of contractors to perform; risks arising from holding derivative instruments; changes in U.S. dollar and other currency exchange rates or gold lease rates; capital and currency controls in foreign jurisdictions; assessment of carrying values for the Company's assets, including the ongoing potential for material impairment and/or write-downs of such assets; the speculative nature of exploration and development, including the risks of diminishing quantities or grades of reserves; the fact that reserves and resources, expected metallurgical recoveries, capital and operating costs are estimates which may require revision; the presence of unfavourable content in ore deposits, including clay and coarse gold; inaccuracies in life of mine plans; failure to meet operational targets; equipment malfunctions; information systems security threats and cybersecurity; laws and regulations governing the protection of the environment (including greenhouse gas emission reduction and other decarbonization requirements); the uncertainty surrounding the interpretation of omnibus Bill C-59 and the related amendments to the Competition Act (Canada); employee relations and labour disputes; the maintenance of tailings storage facilities and the potential for a major spill or failure of the tailings facilities due to uncontrollable events, lack of reliable infrastructure, including access to roads, bridges, power sources and water supplies; physical and regulatory risks related to climate change; unpredictable weather patterns and challenging weather conditions at mine sites; disruptions from weather related events resulting in limited or no productivity such as forest fires, severe storms, flooding, drought, heavy snowfall, poor air quality, and extreme heat or cold; attraction and retention of key employees and other qualified personnel; availability and increasing costs associated with mining inputs and labour, negotiations with respect to new, reasonable collective labour agreements and/or collective bargaining agreements may not be agreed to; the ability of contractors to timely complete projects on acceptable terms; the relationship with the communities surrounding the Company's operations and projects; indigenous rights or claims; illegal mining; the potential direct or indirect operational impacts resulting from external factors, including infectious diseases, pandemics, or other public health emergencies; the completion of the Northern Superior and Orbec transactions, including receipt of the required approvals for the Proposed Arrangements and the inherent risks involved in the exploration, development and mining business generally. Please see the Company's Annual Information Form available on SEDAR+ at [www.sedarplus.ca](http://www.sedarplus.ca) or Form 40-F available on EDGAR at [www.sec.gov/edgar](http://www.sec.gov/edgar) for a comprehensive discussion of the risks faced by the Company and which may cause actual results, performance or achievements of the Company to be materially different from results, performance or achievements expressed or implied by forward-looking statements.

Although the Company has attempted to identify important factors that could cause actual results to differ materially from those contained in forward-looking statements, there may be other factors that cause results not to be as anticipated, estimated or intended. The Company disclaims any intention or obligation to update or revise any forward-looking statements whether as a result of new information, future events or otherwise except as required by applicable law.

# CAUTIONARY STATEMENT

## CAUTIONARY NOTE TO U.S. INVESTORS REGARDING DISCLOSURE OF MINERAL RESERVE AND MINERAL RESOURCE ESTIMATES

The mineral resource and reserve estimates contained in this presentation have been prepared in accordance with National Instrument 43-101 – Standards of Disclosure for Mineral Projects (“NI 43-101”) and the Canadian Institute of Mining, Metallurgy and Petroleum (“CIM”) – CIM Definition Standards on Mineral Resources and Mineral Reserves, adopted by the CIM Council, as amended (the “CIM Standards”). These standards are similar to those found in subpart 1300 of Regulation S-K, used by the United States Securities and Exchange Commission (the “SEC”). However, the definitions in NI 43-101 and the CIM Standards differ in certain respects from those under subpart 1300 of Regulation S-K. Accordingly, mineral resource and reserve information contained in this presentation may not be comparable to similar information disclosed by United States companies.

As a result of the adoption of subpart 1300 of Regulation S-K (the “SEC Modernization Rules”), which more closely align its disclosure requirements and policies for mining properties with current industry and global regulatory practices and standards, including NI 43-101 and the CIM Standards, and which became effective on February 25, 2019, the SEC now recognizes estimates of “measured mineral resources”, “indicated mineral resources” and “inferred mineral resources.” In addition, the SEC has amended definitions of “proven mineral reserves” and “probable mineral reserves” in its amended rules, with definitions that are substantially similar to those used in NI 43-101 and the CIM Standards. Issuers were required to comply with the SEC Modernization Rules starting with their first fiscal year beginning on or after January 1, 2022, however Canadian issuers reporting in the United States under the Multijurisdictional Disclosure System (“MJDS”) may continue to rely on NI 43-101 instead of the SEC Modernization Rules when filing MJDS registration statements and annual reports.

United States investors are cautioned that while the SEC now recognizes “measured mineral resources”, “indicated mineral resources” and “inferred mineral resources” under the SEC Modernization Rules, investors should not assume that any part or all of the mineral deposits in these categories will ever be converted into a higher category of mineral resources or into mineral reserves. These terms have a great amount of uncertainty as to their economic and legal feasibility. Under Canadian regulations, estimates of inferred mineral resources may not form the basis of feasibility or pre-feasibility studies, except in limited circumstances.

Investors are cautioned not to assume that any “measured mineral resources”, “indicated mineral resources”, or “inferred mineral resources” that the Company reports in this presentation are or will be economically or legally mineable. Further, “inferred mineral resources” have a great amount of uncertainty as to their existence and as to their economic and legal feasibility. It cannot be assumed that any part or all of an inferred mineral resource will ever be upgraded to a higher category.

The mineral reserve and mineral resource data set out in this presentation are estimates, and no assurance can be given that the anticipated tonnages and grades will be achieved or that the indicated level of recovery will be realized.

## QUALIFIED PERSON AND TECHNICAL INFORMATION

The technical and scientific information relating to exploration activities disclosed in this document was prepared under the supervision of and verified and reviewed by Marie-France Bugnon, P.Geo., Vice President, Exploration, IAMGOLD. Ms. Bugnon is a “qualified person” (a “QP”) as defined by NI 43-101.

Data verification involves data input and review by senior project geologists at site, scheduled weekly and monthly reporting to senior exploration management and the completion of project site visits by senior exploration management to review the status of ongoing project activities and data underlying reported results. All drilling results for exploration projects or supporting resource and reserve estimates referenced in this presentation have been previously reported in news release disclosures either by the Company and have been prepared in accordance with NI 43-101. The sampling and assay data from drilling programs are monitored through the implementation of a quality assurance - quality control (QA-QC) program designed to follow industry best practice. Drill core (HQ and NQ size) samples are selected by the project geologists and sawn in half with a diamond saw at the project site. Half of the core is typically retained at the site for reference purposes. Generally, sample intervals are 1.0 to 1.5 metres in length and reverse circulation holes are sampled at 1.0 metre intervals at the drill rig. Samples are prepared and analyzed at site for the Company's producing mines and at accredited regional laboratories for the Company's exploration projects, using analysis techniques such as standard fire assay with a 50 gram charge; fire assay with gravimetric finish, or LeachWELL rapid cyanide leach with fire assay with a 50 gram charge.

The technical information has been included herein with the consent and prior review of the above noted QP, who has verified the data disclosed, and data underlying the information or opinions contained herein.

## NON-GAAP FINANCIAL MEASURES

This presentation contains non-GAAP financial measures, including average realized gold price per ounce sold, cash costs, cash costs per ounce sold, AISC, AISC per ounce sold, net cash from operating activities before changes in working capital, mine-site free cash flow, liquidity, net cash (debt), EBITDA, adjusted EBITDA, adjusted net earnings (loss) attributable to equity holders and adjusted net earnings (loss) per share attributable to equity holders, sustaining capital expenditures, expansion capital expenditures, and project expenditures. The non-GAAP financial measures disclosures included in the Company's Q3 2025 MD&A are incorporated by reference in this presentation.

Further details on these non-GAAP financial measures are included on pages 33 to 44 of the Company's Q3 2025 MD&A filed on SEDAR at [www.sedarplus.ca](http://www.sedarplus.ca) and on EDGAR at [www.sec.gov/edgar](http://www.sec.gov/edgar).

# IAMGOLD & CÔTÉ GOLD TEAM



**Renaud Adams**  
President & CEO  
(With IMG since 2023)

- 30+ years of experience in global mining experience in senior executive positions and mining operations located in the Americas
- New Gold, Richmond, Primero Mining



**Bruno Lemelin**  
COO  
(With IMG since 2014)

- Mining Engineer with a Master's and a Doctorate in Mineral Economics and extensive experience in operations, project development and engineering
- Glencore, SNC Lavalin



**Maarten Theunissen**  
CFO  
(With IMG since 2021)

- Chartered Accountant with 18+ years of experience in the mining industry, including serving as Vice President, Finance of IAMGOLD
- TMAC Resources, Uranium One, KPMG



**Ankit Shah**  
CSO  
(With IMG since 2026)

- Chartered Accountant with 15+ years of experience in the mining industry in strategy and corporate development
- New Gold, Ernst & Young, KPMG



**Colin Pegues**  
Vice President & General Manager  
(With IMG since 2025)

- 20+ years of experience in progressive in operations, projects and management positions both domestic and internationally
- Vale Base Metals



**Bernard Haley**  
Mine Technical Services Manager  
(With IMG since 2021)

- Mining Engineering Professional with 20+ years of experience in operations, projects, and technical services in both underground and open pit mines.
- Goldcorp, Newmont, Kirkland Lake Gold



**Lynn Girard**  
Operations Manager  
(With IMG since 2025)

- Process Engineer with 17+ years of experience leading safe operations, asset management, operational ramp-up, and performance optimization
- Goldcorp, Newmont, Sayona (now Elevra)



**Jennifer Bagley**  
HR Manager  
(With IMG since 2025)

- Mining industry HR professional with 20+ years experience in org. design, employee and labour relation strategies and ops readiness.
- Glencore, Vale



**Eric Gosselin**  
Mine Manager  
(With IMG since 2022)

- 15+ years of experience in open-pit mining, including leadership in a large-scale mine startup
- Kirkland Lake, Detour Gold



**Genevieve Sulatycky**  
Sustainability Manager  
(With IMG since 2022)

- Mining industry sustainability professional with experience in environmental management, community engagement and site integration.
- Agrium, Ministry of Mines Ontario



**Roxana Johnston**  
Finance Manager  
(With IMG since Feb 2026)

- CGA/CPA/MBA with 20+ in mining finance in both gold and base metals
- Glencore, Lakeshore Gold, McEwen

# OPERATIONS OVERVIEW

● Operating  
● Advanced Exploration

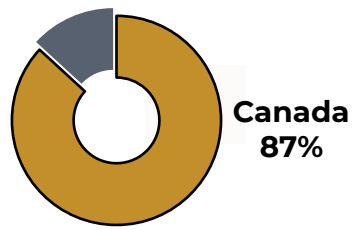
**CÔTÉ GOLD<sup>1</sup>**  
Ontario, Canada  
(70% IMG | 30% SMM<sup>1</sup>)

<b>Start-up</b>	2024
<b>Mine type</b>	Open pit
<b>Estimated mine life</b>	~2041+
<b>2026 Guidance</b>	(70%) 270,000 – 310,000 oz
	(100%) 390,000 – 440,000 oz
	\$900 – \$1,050/oz CC <sub>exR</sub> <sup>2</sup> \$1,775 – \$1,925/oz AISC <sup>2</sup>
<b>Upcoming catalysts:</b>	Q4/26: Expansion of Côté

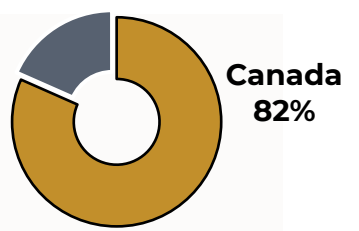
**NELLIGAN MINING COMPLEX<sup>5</sup>**  
Quebec, Canada  
(100% IMG)

<b>Status</b>	Pre-production
<b>Deposit type</b>	Open pit/Sat. UG
<b>Indicated Mineral Resources<sup>3,5</sup></b>	4.3 Moz
<b>Inferred Mineral Resources<sup>3,5</sup></b>	7.5 Moz
<b>Upcoming catalysts:</b>	H1/27: Initial PEA

Mineral Resources<sup>3</sup> by Geography



Net Asset Value<sup>4</sup> by Geography



**WESTWOOD**  
Quebec, Canada  
(100% IMG)

<b>Start-up</b>	2014
<b>Mine type</b>	Underground/Sat. OP
<b>Estimated mine life</b>	~2032+
<b>2026 Guidance, 100%</b>	110,000 – 130,000 oz
	\$1,500 – \$1,650/oz CC <sup>2</sup>
	\$1,950 – \$2,100/oz AISC <sub>2</sub>
<b>Upcoming catalysts:</b>	H2/27: UG Expansion

**ESSAKANE**  
Burkina Faso, West Africa  
(85% IMG)

<b>Start-up</b>	2010
<b>Mine type</b>	Open pit
<b>Estimated mine life</b>	~2028+
<b>2026 Guidance, 85%</b>	340,000 – 380,000 oz
	\$1,150 – \$1,300/oz CC <sub>exR</sub> <sup>2</sup>
	\$2,000 – \$2,150/oz AISC <sup>2</sup>
<b>Upcoming catalysts:</b>	H1/27: LOM extension

1. Côté Gold is owned as a 70/30 JV between IMG and Sumitomo Metal Mining Co. Ltd. and carries a 7.5% NPI royalty.  
 2. CC<sub>exR</sub> = cash costs (excluding royalties): royalty costs at Côté Gold and Essakane estimated at \$300/oz and \$450/oz, respectively, at \$4,000/oz Au; CC = cash costs; AISC = All-in sustaining costs; These are non-GAAP financial measure. Refer to "Non-GAAP Financial Measures" on slide #3  
 3. M&I resources inclusive of mineral reserves.  
 4. Net Asset Value is estimated using the average of consensus estimates  
 5. On Dec 19, 2025 and Dec 22, 2025, IAMGOLD closed the previously announced agreements to acquire Northern Superior Resources and Mines d'Or Orbec

# CÔTÉ GOLD MINE

# CÔTÉ GOLD HIGHLIGHTS

## One of Canada's largest gold mines

A flagship long-life operation in a top-tier mining jurisdiction

## 20M+ Ounces Resource Base

Current Mineral Resources of 20.3 Moz M&I and 3.5 Moz Inf. with expansion potential

## >\$580M Attributable Free Cash Flow in 2026

Operations expected to improve quarter over quarter with declining costs

## Côté Expansion of Scale & Scope

Updated study in Q4/26 to increase throughput and significantly expand mine life with consolidated Côté-Gosselin pit

## Exploration Upside

Significant exploration potential within greater Côté region

# CÔTÉ GOLD

**Ownership:** 70:30 IAMGOLD & SMM

**Location:** Ontario – 125 km SW of Timmins, 175 km N of Sudbury

- Acquisition:**
- Acquired in April 2012 for \$505 M from Trelawney Mining
    - Mineral Resources: 0.9 Moz Indicated and 5.9 Moz Inferred
  - Sumitomo acquired 30% undivided participating interest for \$195 M in June 2017
    - 8.4 Moz Indicated and 1.2 Moz Inferred, post-PEA

**Power:** Grid power supplied by Hydro One (up to 72 MW capacity)

**Construction:** September 2020 → April 2024

- Status:** **In production** (first pour March 31, 2024)
- Achieved nameplate capacity in June 2025
  - Expansion study in Q4 2026



*Groundbreaking ceremony, 2020*



*Process plant construction, 2021*



*Ribbon cutting, 2024*



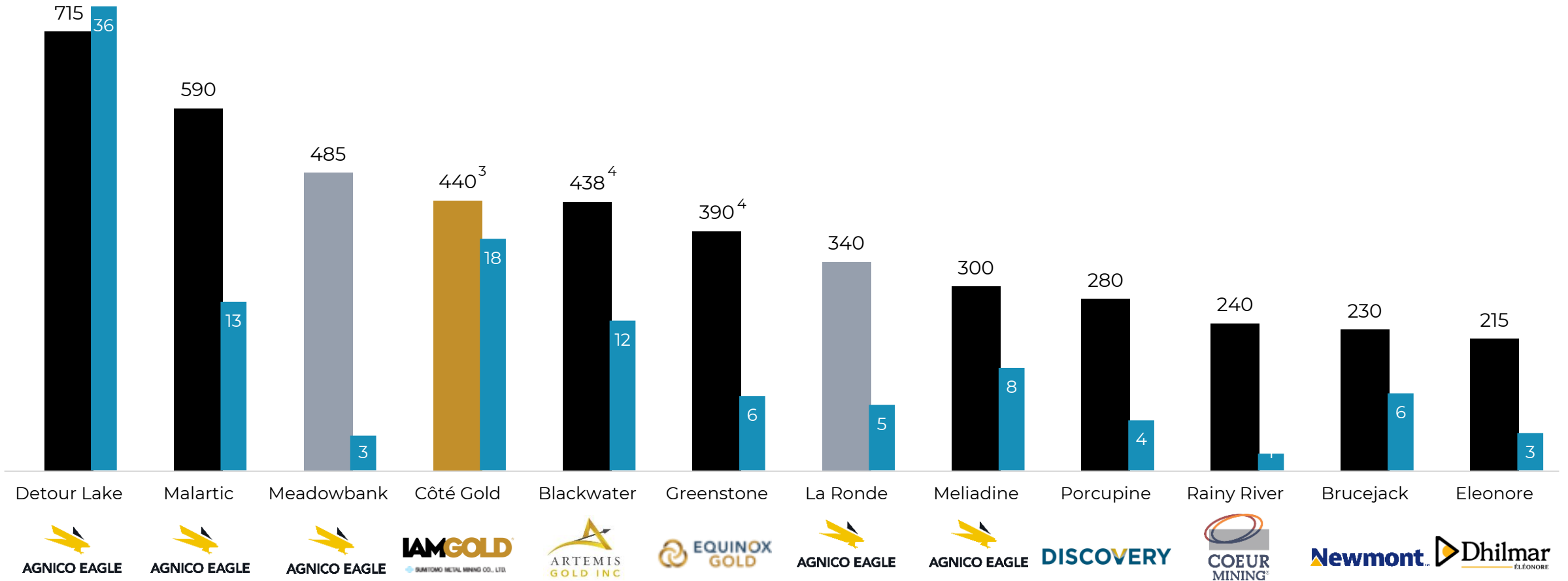
*First gold pour, 2024*



# CÔTÉ GOLD: LARGE-SCALE AND LONG-LIFE MINE

## TOP 12 GOLD MINES IN CANADA BY PRODUCTION<sup>1</sup> (koz)

■ Mines acquired in last 15 years  
■ M&I Mineral Resources<sup>2</sup> (inclusive of reserves)



# Q1 2026 OPERATING RESULTS

## Q1 OVERVIEW

- **Production (70%): 52,300 oz | (100%): 74,700 oz**

## MINING

- Total **tonnes mined of 9.3 M tonnes** and total **ore tonnes of 3.6 M tonnes**
  - Strip ratio of 1.6:1
  - Avg **grade mined of 0.99 g/t** in line with mine plan
  - Rehandling of material continued to feed 3<sup>rd</sup> party mobile crusher in support of primary-secondary crushing circuit

## MILLING

- **Mill throughput of 2.3 M tonnes**
  - Throughput limited in Q1 by unplanned downtime from wear and splits on primary conveyor as load increased following installation of 2<sup>nd</sup> cone crusher
  - Effective repairs as throughput averaged 32,000 tpd in April
  - New conveyor belt to be installed in May during regular maintenance shutdown
  - Contracted 3<sup>rd</sup> party mobile crusher to be phased out over H1 2026
- **Head grades of 1.07 g/t**
- **Recoveries of 93%** with good reconciliation between reserve model and mill feed

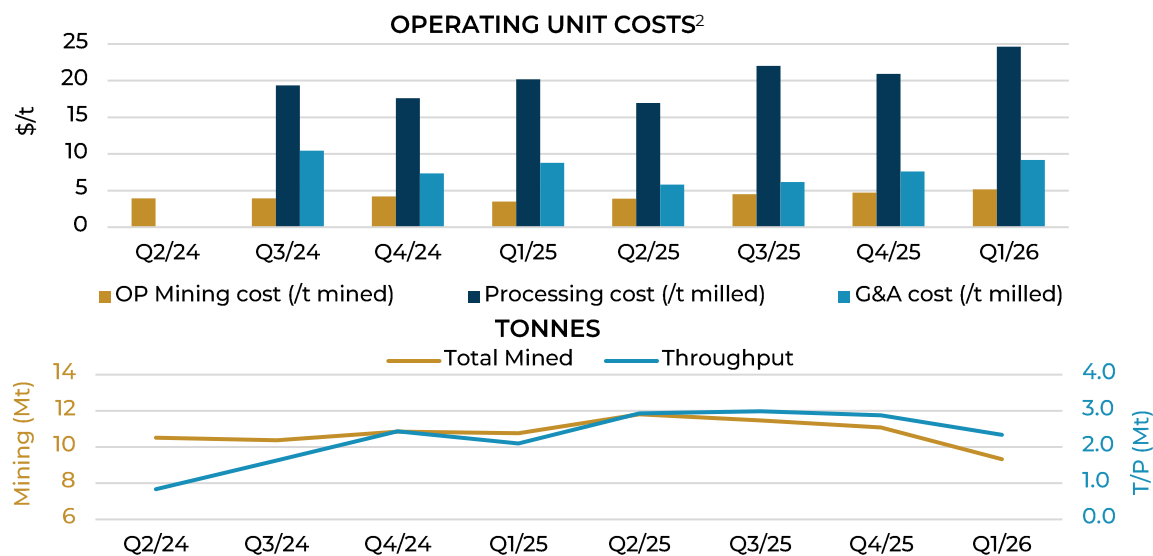
(100% basis, unless otherwise stated)		Q1 2026	Q1 2025	2025	2026 Guidance
Ore mined	kt	3,553	3,115	14,640	
Grade mined	g/t	0.99	0.78	0.94	
Material mined – total	kt	9,326	10,755	45,108	~52,000
Ore milled	kt	2,341	2,097	10,889	12,000 – 13,000
Head grade	g/t	1.07	1.17	1.22	1.00 – 1.10
Recovery	%	93%	93%	93%	
<b>Production – 100%</b>	<b>koz</b>	<b>74.7</b>	<b>73.0</b>	<b>399.8</b>	<b>390 – 440</b>
<b>Production – attr.</b>	<b>koz</b>	<b>52.3</b>	<b>51.1</b>	<b>279.9</b>	<b>270 – 310</b>
Cash costs (excl. royalties) <sup>1</sup>	\$/oz	\$1,369	\$1,074	\$1,020	\$900 – 1,050
Cash costs <sup>1,2</sup>	\$/oz	\$1,704	\$1,260	\$1,268	\$1,200 – 1,350
All-in sustaining costs <sup>1,2</sup>	\$/oz	\$2,109	\$1,643	\$1,636	\$1,775 – 1,925
Sustaining capital <sup>1</sup> – attr.	\$M	\$18.8	\$18.2	\$103.8	\$160 (±5%)
Expansion capital <sup>1</sup> – attr.	\$M	\$9.1	\$3.1	\$23.7	\$85 (±5%)



# Q1 2026 COST & OUTLOOK

## COSTS

- **Cash costs<sup>1</sup> (excluding royalties) of \$1,369/oz, cash costs<sup>1</sup> of \$1,704/oz & AISC<sup>1</sup> of \$2,109/oz in Q1**
- **Mining and processing cost improvement plan:**
  - **Contracted mobile crusher to phased out through H1.** Crusher was deployed in 2025 to complete ramp up and **achieve nameplate ahead of schedule**
  - Increased throughput volumes
  - **Improved maintenance cycles** – 2<sup>nd</sup> cone crusher already extending life of HPGR
  - Expanded operating area in pit to improve efficiencies
- **Oil sensitivity:** \$10/bbl ↑ = \$7/oz ↑ in costs



## OUTLOOK

		Attr.	2025	2026 Guidance
<b>Production</b>	oz	(100%) (70%)	399,800 <b>279,900</b>	390,000 – 440,000 <b>270,000 – 310,000</b>
<b>Cash costs (excl. royalties)<sup>1</sup></b>	\$/oz		\$1,020	\$900 – \$1,050
<b>Cash costs<sup>1</sup></b>	\$/oz		\$1,268	\$1,200 – \$1,350
<b>AISC<sup>1</sup></b>	\$/oz		\$1,636	\$1,775 – \$1,925
<b>Sustaining capital<sup>1</sup></b>	\$M	(70%)	\$103.8	\$160 (±5%)
<b>Expansion capital<sup>1</sup></b>	\$M	(70%)	\$23.7	\$85 (±5%)



# SITE TOUR AGENDA

TIME	EVENT	
05:45	Bus departure – boxed breakfast on the bus	
08:00	Arrival at Côté, PPE pick-up, safety induction at PCC	
<b>Tour *</b>		
08:30 – 11:30	Open Pit	IOC Control Room
	Truck Shop	Processing Plant
	TMF	
11:30	Remove PPE at Main Camp	
12:30	Lunch at Main Camp	
13:00	Depart for Timmins	

\* We will be dividing into two groups for mine and mill tours

Mine Rock Area

Oshki Lake

← Overburden Stockpile

Côté Lake

Open Pit

Clam Lake

Little Clam Lake

Primary & Secondary Crusher

Processing Plant

Ore Stockpiles

Truck Shop

Geoplex

Office Complex

NORTH ↓





Tailings Management Facility

Clam Lake

Little Clam Lake

Processing Plant

Primary & Secondary Crusher

Assay Lab

Bagsverd Lake

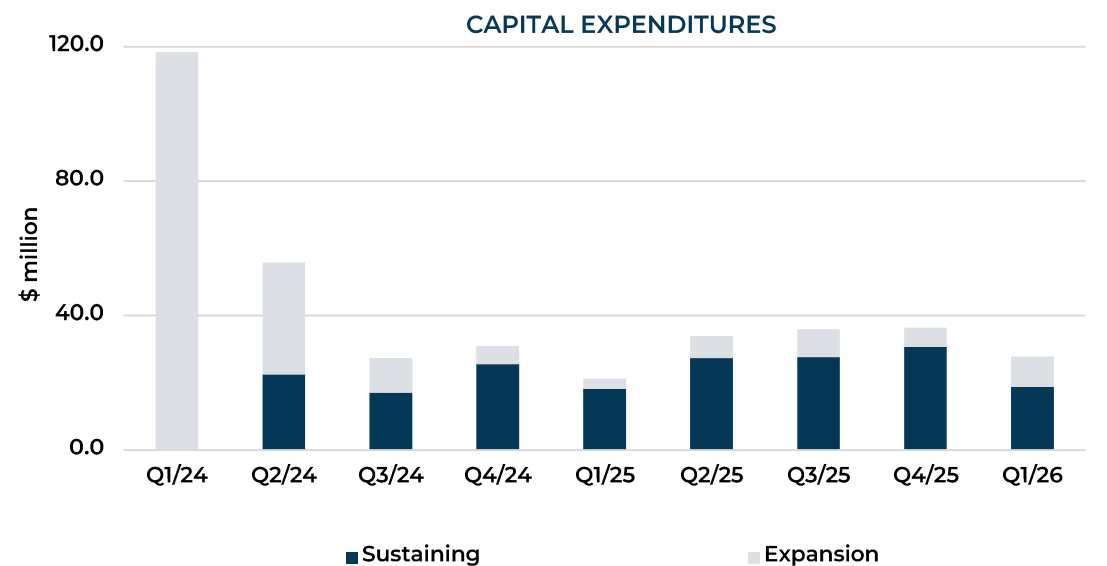
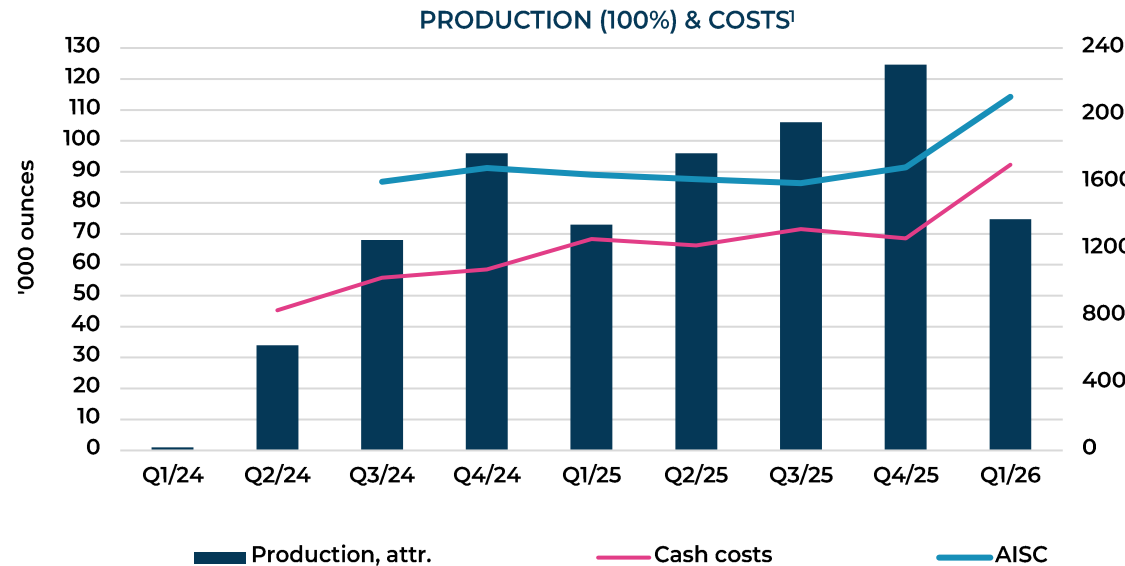
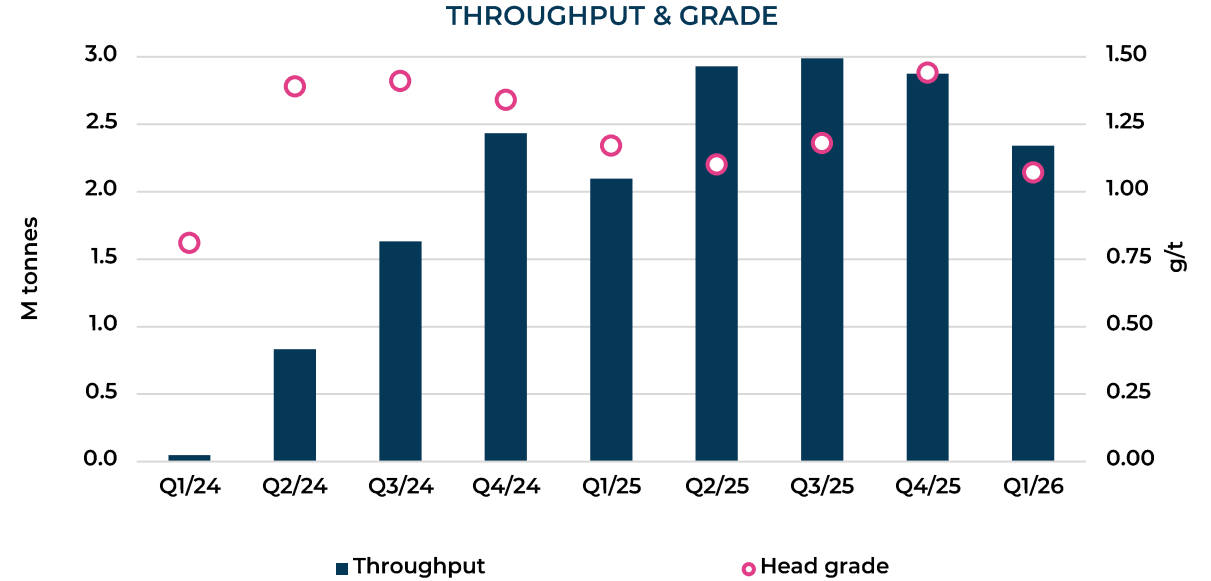
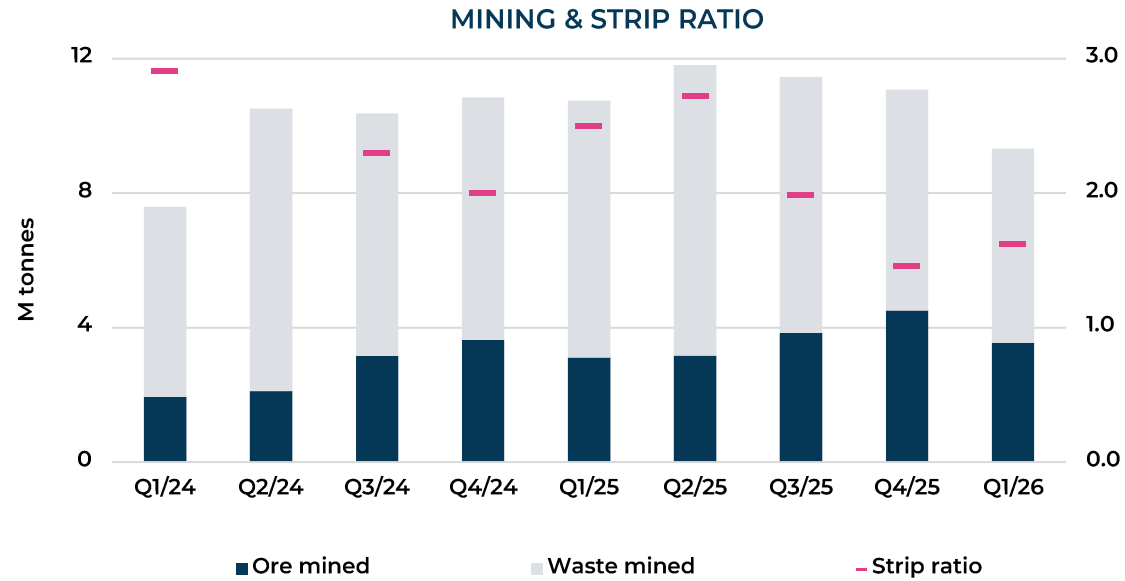
Office Complex

← Open Pit

Truck Shop

NORTH →

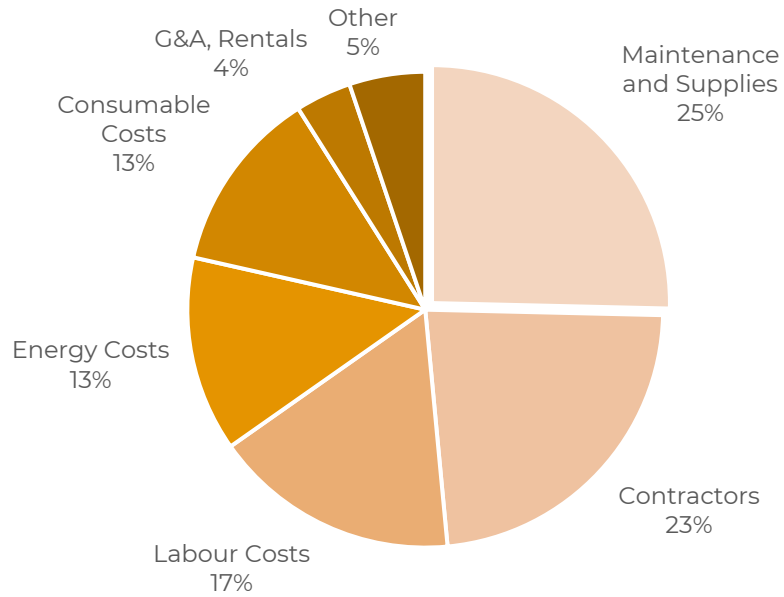
# LIFE OF MINE TO DATE OPERATING RESULTS



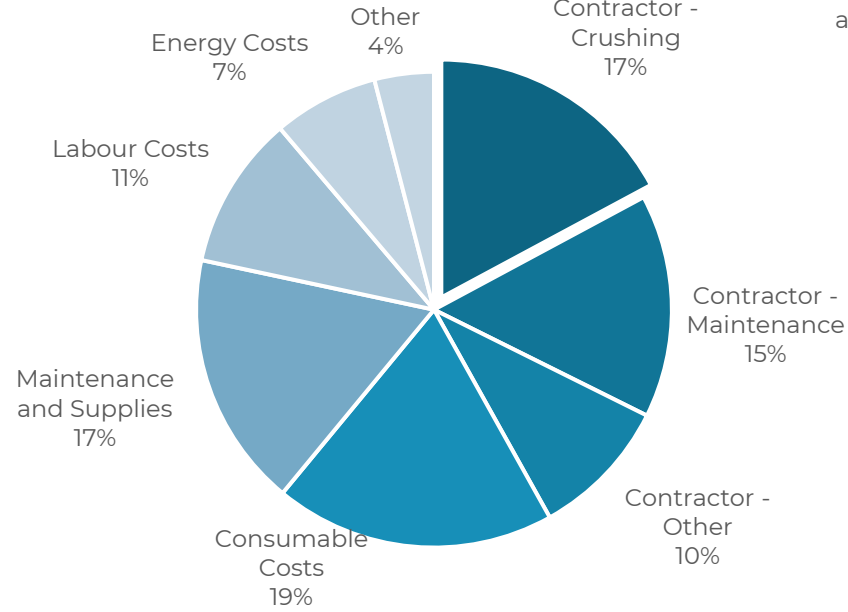
1. This is a non-GAAP financial measure. Refer to "Non-GAAP Financial Measures" on slide #3.

# COST CATEGORIES

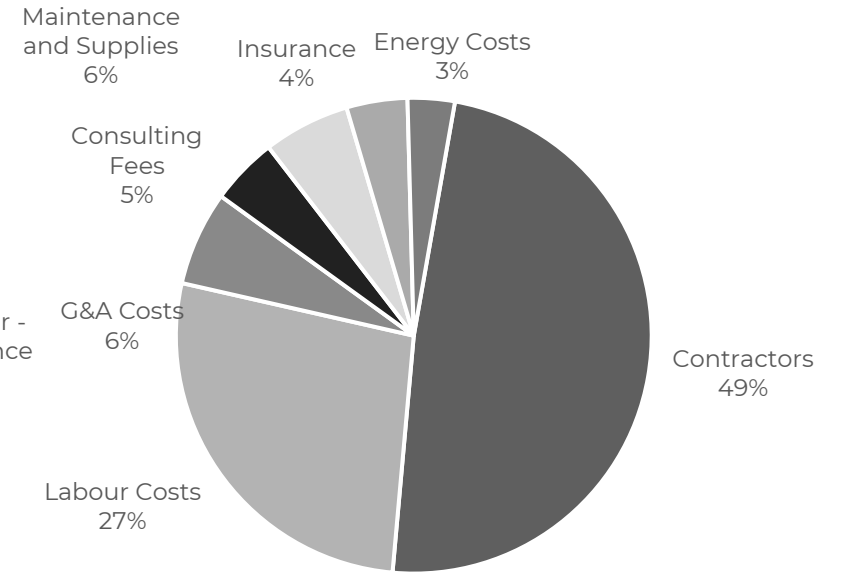
## Mining<sup>1</sup>



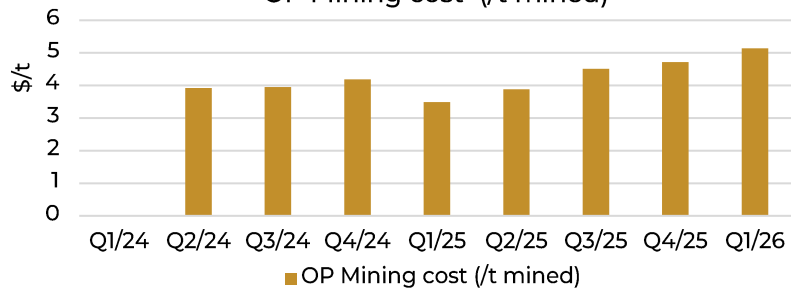
## Milling<sup>1</sup>



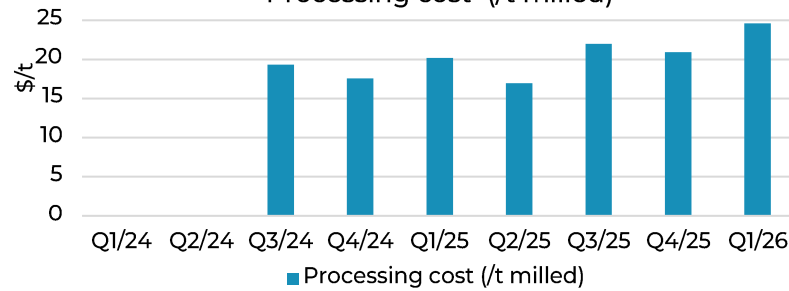
## G&A<sup>1</sup>



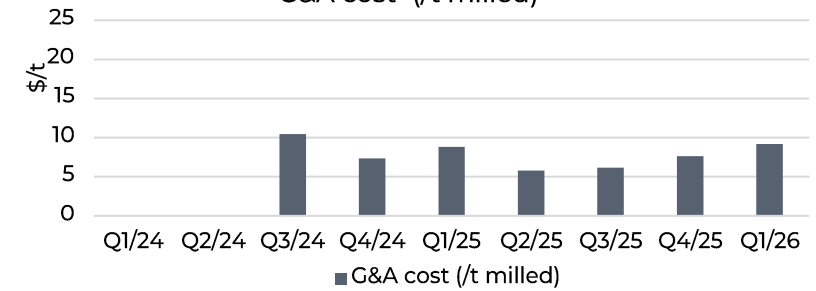
OP Mining cost<sup>2</sup> (/t mined)



Processing cost<sup>2</sup> (/t milled)



G&A cost<sup>2</sup> (/t milled)

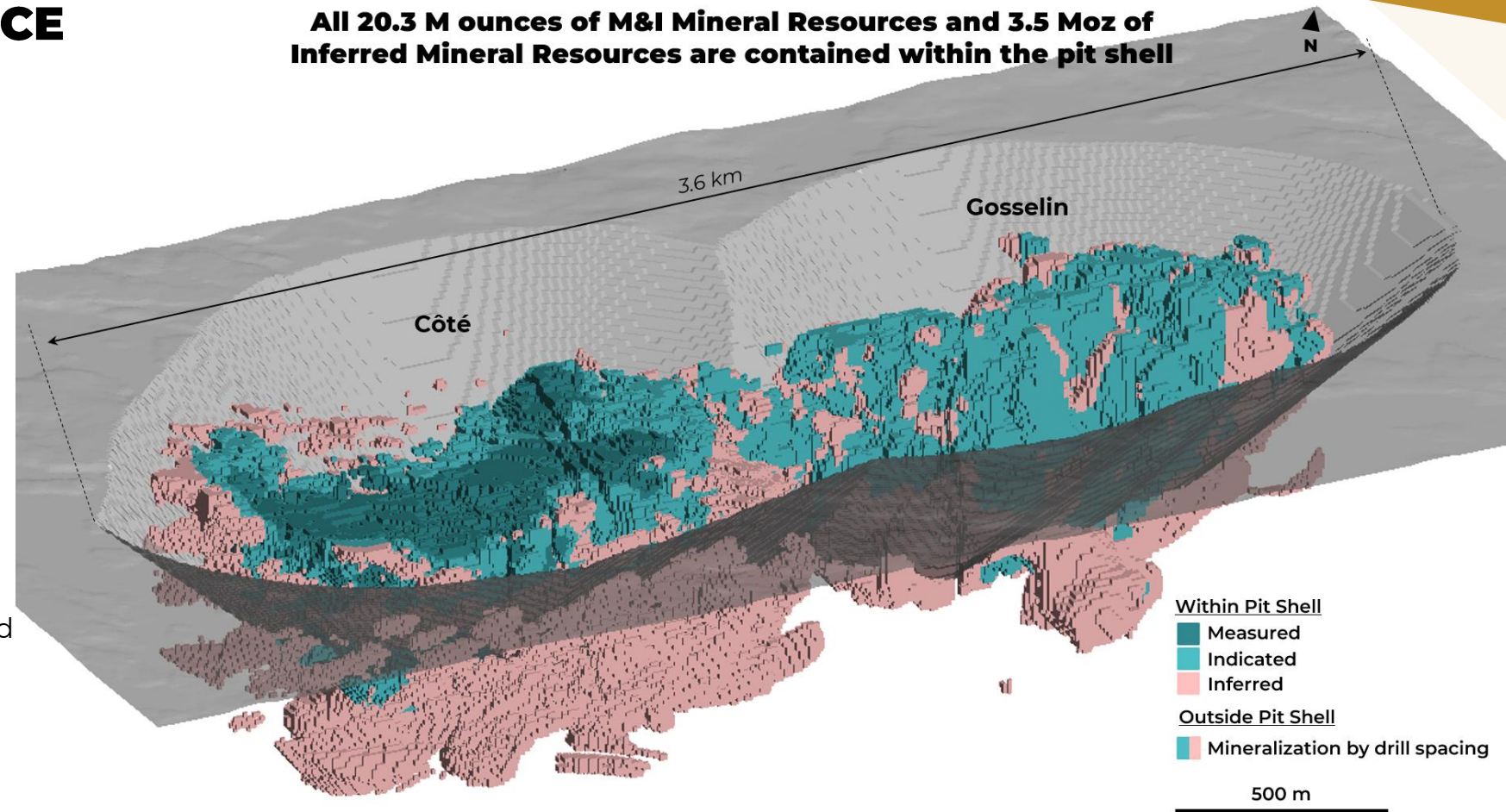


1. Cost breakdown based on last 12 months of operations  
 2. Operating Unit Costs: Mining cost = per tonne of material mined; Processing and G&A cost = per tonne of ore processed

# CONSOLIDATED RESOURCE

**All 20.3 M ounces of M&I Mineral Resources and 3.5 Moz of Inferred Mineral Resources are contained within the pit shell**

- Updated Mineral Resource estimate reflects integration of the Côté and Gosselin zones into a consolidated block model
  - Incorporated interconnecting saddle area between Côté and Gosselin
- Gold price of \$2,500 per ounce (up from \$2,100/oz for Côté and \$2,500/oz for Gosselin)
- Consolidated cut-off grade of 0.25 g/t Au (down from 0.30 g/t Au previously) applied across the consolidated zones.
- Will inform the expansion technical report and mine plan to be released in Q4 2026**



**CÔTÉ & GOSSELIN CONSOLIDATED MINERAL RESOURCE ESTIMATE<sup>1</sup>**

	<b>Tonnes</b>	<b>Grade</b>	<b>Ounces</b>
<i>(as of Mar 31, 2026)</i>	<i>(000's)</i>	<i>(g/t)</i>	<i>(000's)</i>
Measured	164,364	0.89	4,712
Indicated	673,623	0.72	15,629
<b>Measured + Indicated<sup>2</sup> (incl. reserves)</b>	<b>837,987</b>	<b>0.75</b>	<b>20,341</b>
Inferred	<b>177,128</b>	<b>0.61</b>	<b>3,479</b>

1. M&I resources are inclusive of P&P Mineral Reserves, refer to Mineral Reserves and Resources Statement in Appendix.  
 2. Updated assumptions include a gold price of \$2,500 per ounce (up from \$2,100/oz for Côté and \$2,500/oz for Gosselin) and a consolidated cut-off grade of 0.25 g/t Au (down from 0.30 g/t Au previously) applied across the consolidated zones.

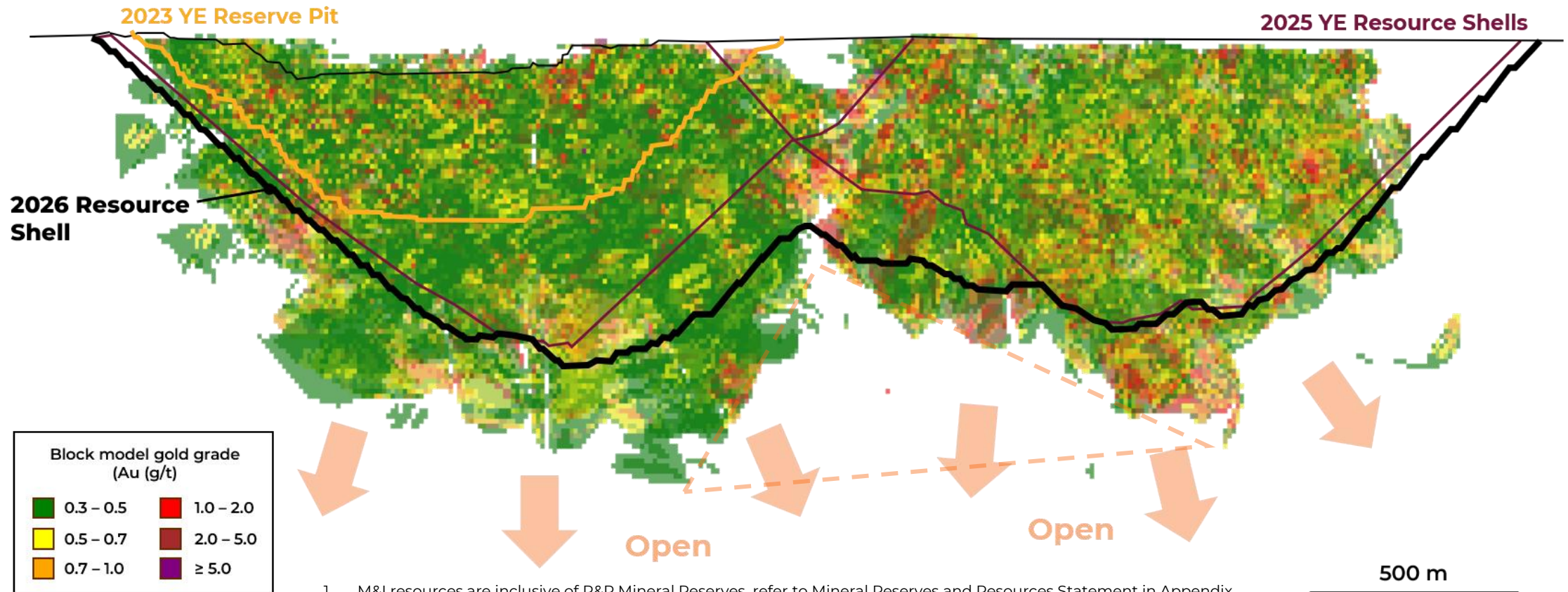
# CONSOLIDATED RESOURCE

## CÔTÉ ZONE - MINERAL RESERVE ESTIMATE

	Tonnes	Grade	Ounces
(as of Dec 31, 2025)	(000's)	(g/t)	(000's)
Proven & Probable: Côté	217,167	1.01	7,041

## CÔTÉ & GOSSELIN CONSOLIDATED MINERAL RESOURCE ESTIMATE

	Tonnes	Grade	Ounces
(as of Mar 31, 2026)	(000's)	(g/t)	(000's)
Measured	164,364	0.89	4,712
Indicated	673,623	0.72	15,629
<b>Measured + Indicated<sup>2</sup> (incl. reserves)</b>	<b>837,987</b>	<b>0.75</b>	<b>20,341</b>
Inferred	177,128	0.61	3,479



1. M&I resources are inclusive of P&P Mineral Reserves, refer to Mineral Reserves and Resources Statement in Appendix.
2. Updated assumptions include a gold price of \$2,500 per ounce (up from \$2,100/oz for Côté and \$2,500/oz for Gosselin) and a consolidated cut-off grade of 0.25 g/t Au (down from 0.30 g/t Au previously) applied across the consolidated zones.

# CÔTÉ EXPANSION OPPORTUNITY

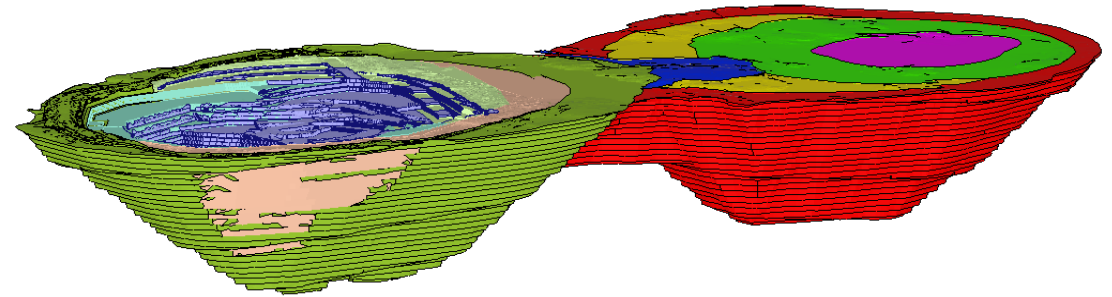
## INCREASED SCOPE AND SCALE

- **Expansion technical report and mine plan to be released in Q4 2026**
- Conceptual plan to **expand Côté plant from 36,000 tpd to 50,000+ tpd** targeting subset of consolidated Côté and Gosselin model with M&I of 20.3 Moz and Inf. of 3.5 Moz
- **Côté general strategy to mine at a higher rate than processing to allow for lift in head grade when stockpiling low-grade ore**

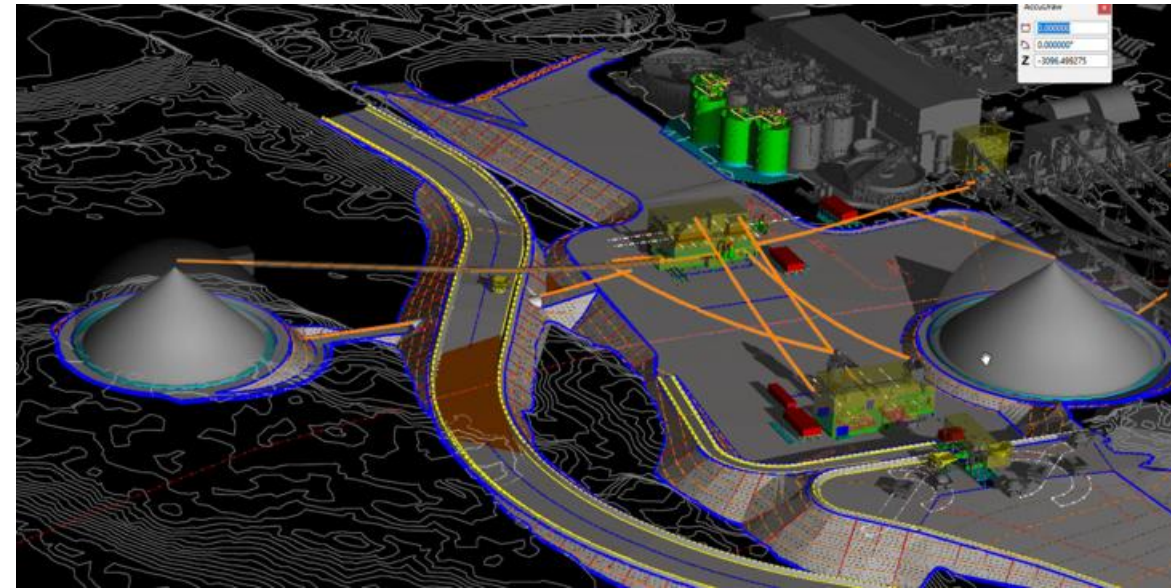
## EXPANSION PRIORITIES

- **Mining:** Current ore mining design rate of ~ 50,000 tpd based on 2:1 strip ratio
- **Processing:** Expansion to include a 2<sup>nd</sup> dry crushing line, 3<sup>rd</sup> vertimill, optimized refeed systems and increased fine ore dome capacity and leach tanks
- **Prioritize plant expansion** with engineering work expected to commence after release of updated technical report
- **Mine plan likely to include staged capital** as Côté pit currently has over 400 Mt in M&I and is higher grade than Gosselin
  - TMF current capacity at 230 Mt with expansion potential

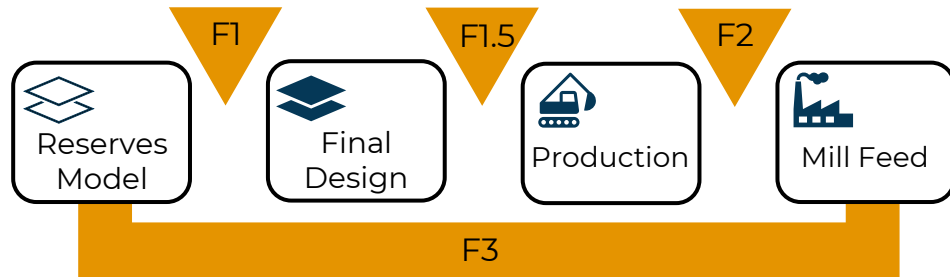
CONCEPTUAL DIAGRAM OF CÔTÉ AND GOSSELIN PITS



CONCEPTUAL DIAGRAM OF PLANT EXPANSION



# RECONCILIATION



## 2025

Factor	Tonnes	Grade	Ounces
F1	-3%	-5%	-8%
F1.5	6%	-2%	5%
F2	-3%	6%	3%
F3	1%	-1%	-1%

## Last 6-months

Factor	Tonnes	Grade	Ounces
F1	-2%	-7%	-9%
F1.5	5%	0%	6%
F2	-2%	8%	6%
F3	1%	1%	2%

## EXCELLENT RECONCILIATION BETWEEN GEOLOGICAL AND GRADE CONTROL MODELS

**Marginal variability seen in grade and tonnage estimates between designs, production estimates, and mill feed estimates. Caused by blending stockpiles and available drill hole data.**

- Will continue to improve stockpile estimations and improving block models with additional RC and DDH data.

**Mill reconciliation** demonstrating strong F3 reconciliation over long periods, improving confidence in reserves and life-of-mine plans.

## MODEL DETAILS

**Resource and Reserve model** reconciliation is based on 2025 Cote Model, and not the Merged Cote-Gosselin model.

**Grade Control Model** updated with latest RC and Production Reconciliation (ongoing)

# OVERVIEW OF OPERATIONS



**Mining progress:**  
Over 111 MT of rock mined, with 33MT of ore and 78Mt of Waste. Over 1,591km of drilling, and 35,144,000 kg of explosives blasted.

**Sequence Update:**  
Mining started at 382mL and progressed to 256m Bench in Phase 0 and Phase 1 down to 292mL. Push back of Phase 2 started in late 2025 and is currently on the 376m bench

**Mine Rock Area:**  
Phase 1 & 2 of waste rock stockpile is up to 159MT and Phase 3 & 4 are being prepared.

**Ore Stockpiles:**  
Low Grade stockpile balance at 14.3MT and High Grade at 0.7MT

**Milling:**  
Tonnes milled in 2025 at 10.8MT and 400koz of gold produced.

**Tailings Management Facility:**  
Progressive construction advancing well with utilization of autonomous fleet 51MT of waste placed and 19MT of tailings.

**Water Management:**  
Rigorous monitoring in place to continue Mill operations with reclaim water and ensure mine discharge to environment remains compliant. Rental Water Treatment Plant in operations since April 2026 to reduce nitrate level in effluent discharge.

# MINING



# AUTONOMOUS OPERATIONS

## AUTONOMOUS EQUIPMENT

Côté Gold utilizes autonomous haulage and drilling with primary equipment:

- 20 autonomous CAT 793F haul trucks – will have 24 by year end.
- 2 CAT 6060E electric shovels
- 4 CAT 994/5K front-end loaders
- Viper 231 autonomous drills

Autonomous fleet is controlled from an **INTEGRATED OPERATIONS CENTRE (IOC)** at site



- Provides data, metrics, and advanced analytics, to make informed, coordinated, and expedient decisions.
- Process plant operations centre moved into the IOC

To maximize safety and control the operating conditions, automated machines work in designated **AUTONOMOUS OPERATING ZONES (AOZ)**.

- Connected to the IOC via a dense communications and surveillance network. Human access to our AOZ is restricted to qualified and necessary personnel.
- In 2026, the mine is planning to complete implementation of a private LTE/5G network to improve connectivity in the pit as fleet expands and as mining progresses deeper.

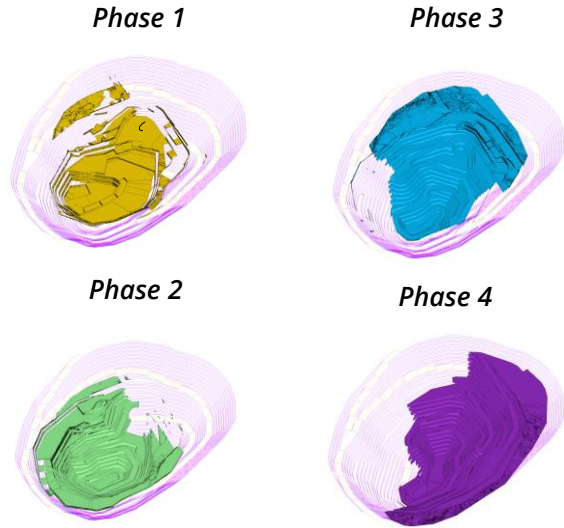
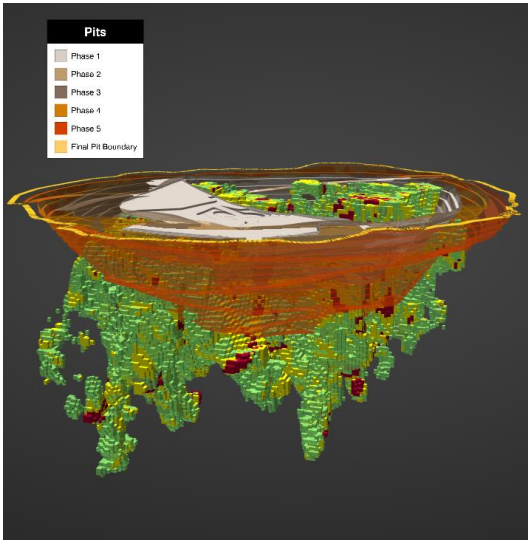


45 million tonnes mined in 2025  
Strategy is to continue ramp-up to 60MT in future years

## AHS BENEFITS

- **Safety:** Reducing risks of fatigue management incidents & removing traditional surveying requirements
- **Productivity:** Reliability through consistent operation, improved performance in difficult environmental conditions, automatic adjustments to haulage routes
- **Data is key:** Performance and results are very predictable: Mining becomes mathematical!

# MATERIAL MOVEMENT

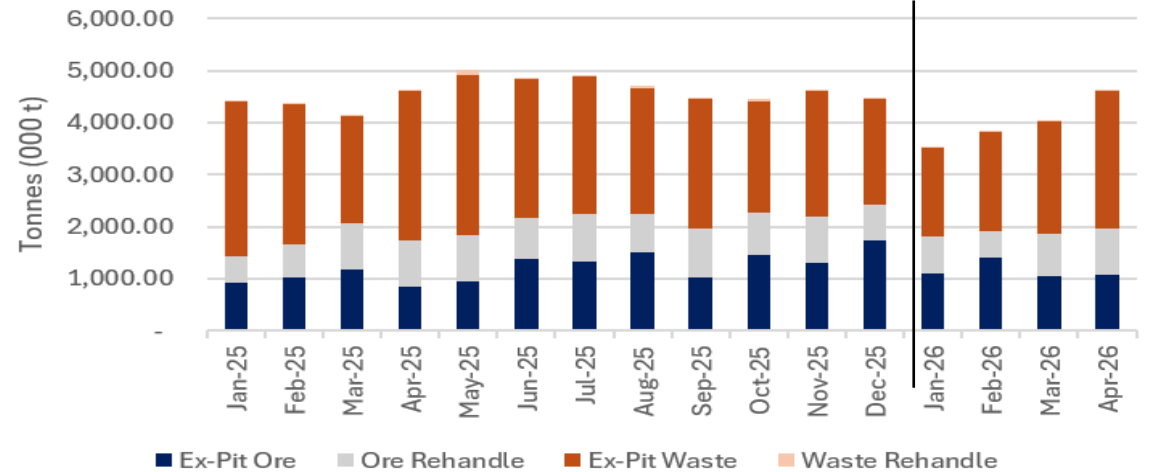


## MINING OPERATIONS

(100% basis, unless otherwise stated)

		Q1 2025	Q2 2025	Q3 2025	Q4 2025	Q1 2026
Tonnes mined – Waste	kt	7,789	8,638	7,585	6,574	5,773
Tonnes mined – Ore	kt	3,115	3,170	3,848	4,491	3,553
Material mined – total	kt	10,904	11,816	11,433	11,064	9,326
Grade Mined	g/t	0.78	0.95	0.96	1.07	0.99
Strip ratio	w:o	2.5	2.7	2.0	1.5	1.6
Production metres drilled	km	154	137	145	153	142

## MATERIAL MOVEMENT



# MINING PERFORMANCE

## DRILLING

### 5 – Pit Vipers and 5 – D65s

- Fleet availability continuing to improve with significant uplift through Q1 2026
- Additional D65 drills added to fleet to meet pre-shear requirements

## BLASTING

- Ongoing collaborative relationship with explosives vendor for improved performance
- Implemented Drill and Blast optimization initiatives

## LOADING

### 2 – 6060 shovels and 4 – 994/5 loaders

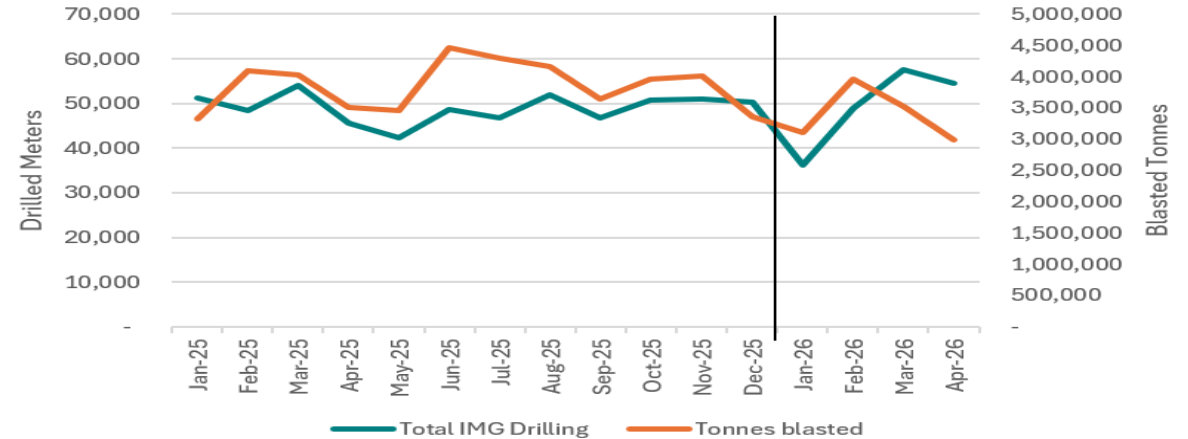
- Shovel availability 80%-85% and Loader availability 75% to 80% (Improvement from previous year)
- Utilization remains high at 90%

## HAULING

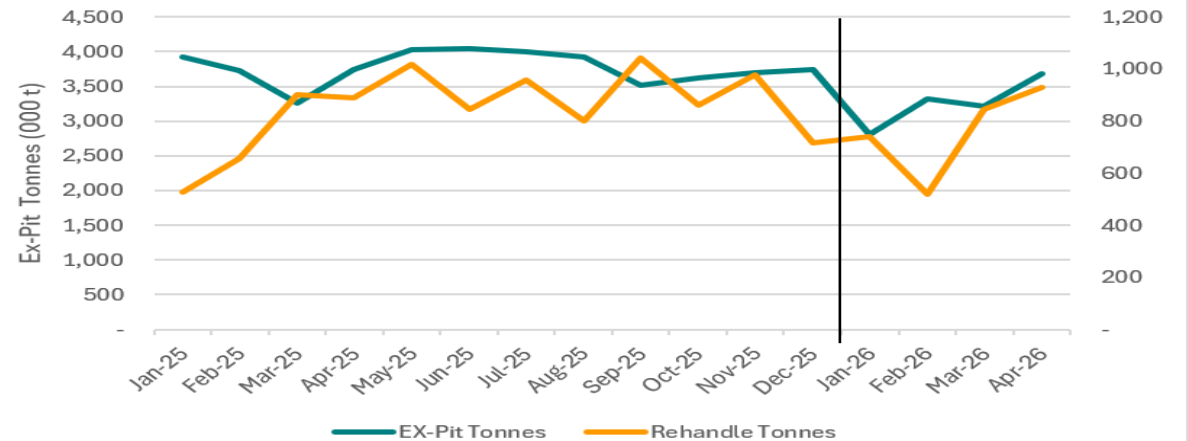
### 20 – 793 autonomous haul trucks in operation in 2026

- Truck availability steady at 87% up from 80% in 2025
- Utilization at +90%
- Additional trucks to arrive Q3 and Q4 to meet increase Ex-pit targets

### DRILLING & BLASTING STATS



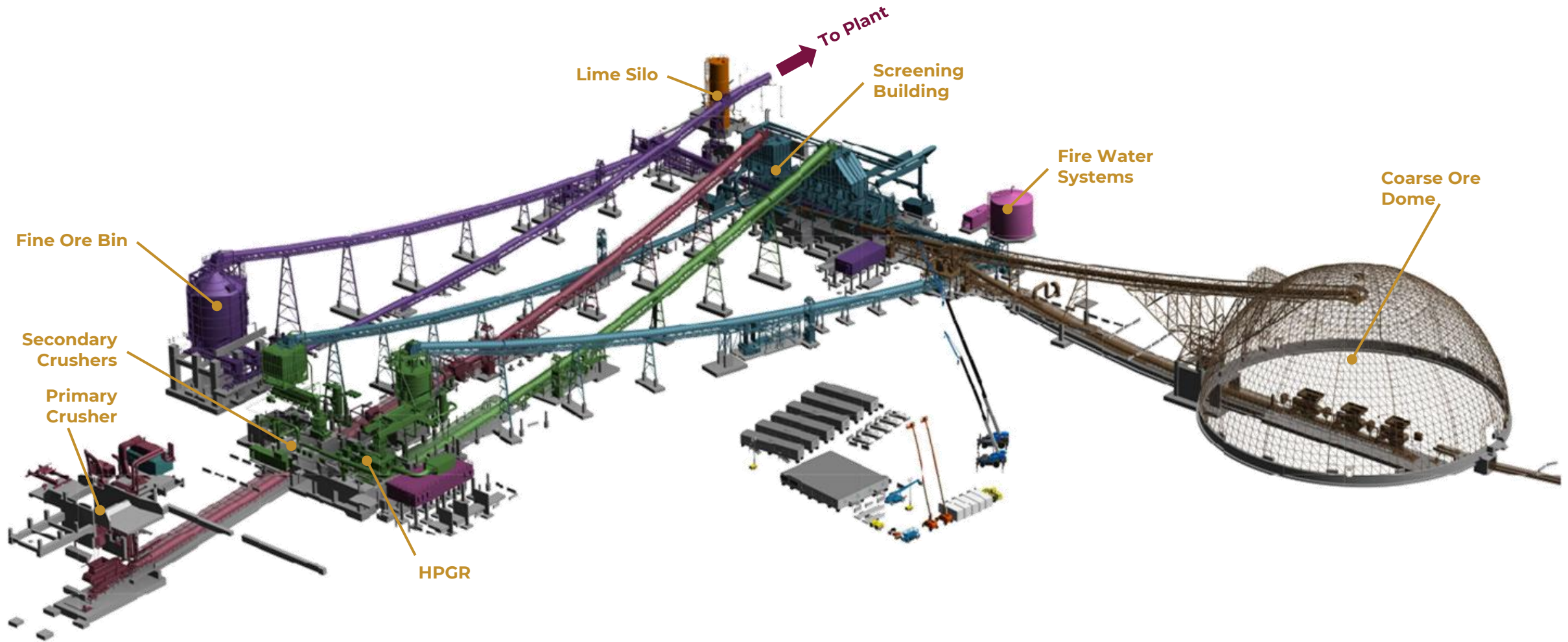
### EX-PIT AND REHANDLE STATS



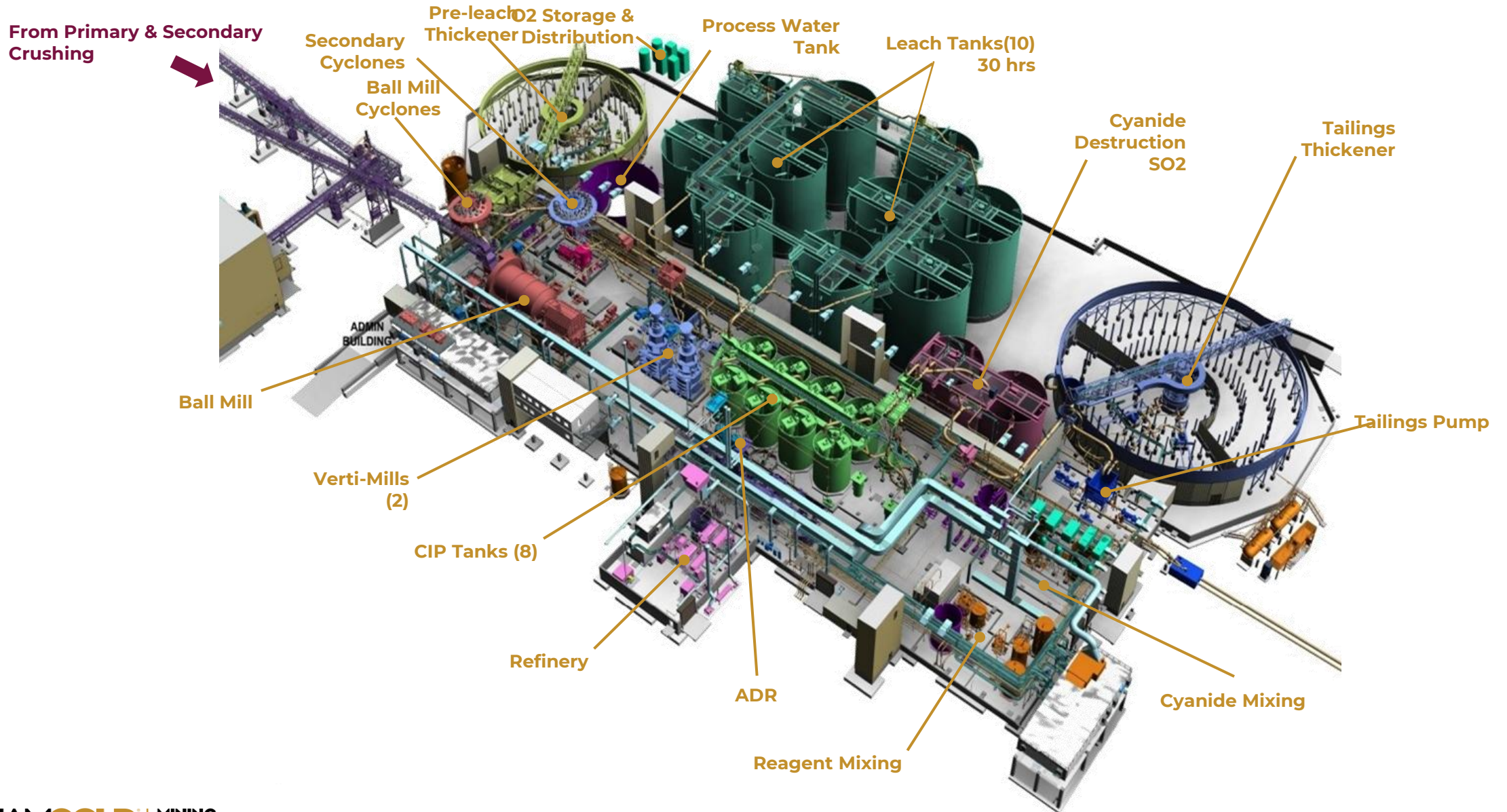


# PROCESSING

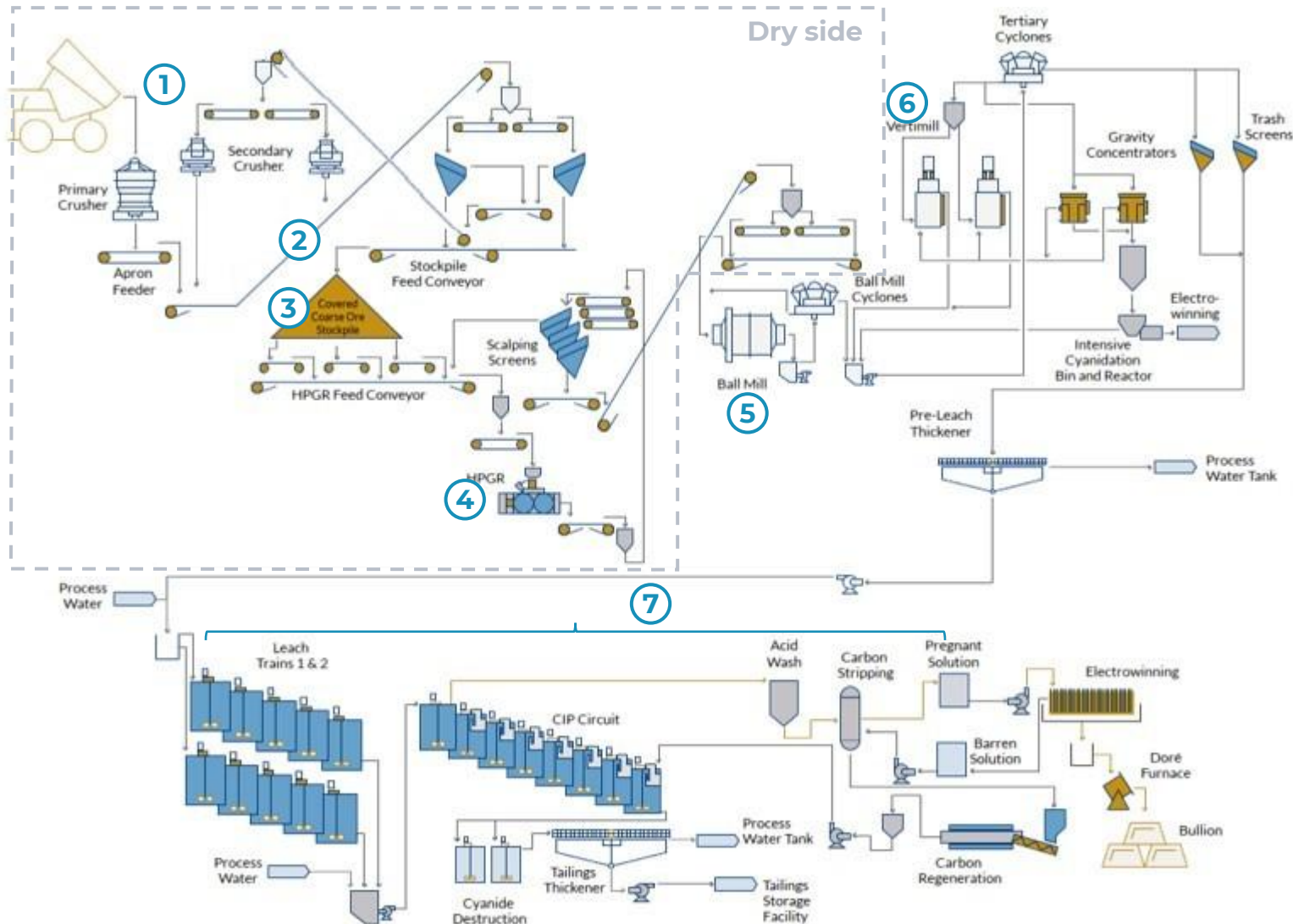
# CÔTÉ PRIMARY AND SECONDARY CRUSHING CIRCUITS



# CÔTÉ PROCESSING PLANT



# CÔTÉ PROCESSING FLOWSHEET



## KEY COMPONENTS

- ① Traditional primary/secondary crushing
  - Additional secondary cone crusher commissioned Dec 2025
- ② Primary conveyor CV-10
- ③ Coarse ore stockpile in covered dome
- ④ HPGR crushing in tertiary stage
  - Two stages of grinding:
- ⑤ Ball mill
- ⑥ Vertical mills
  - 3<sup>rd</sup> Vertimill to be installed in 2027
- ⑦ Standard Leach/CIP with Zadra elution circuit
  - Recoveries have been above design (91.8%) since Côté start (avg. 93.5% over last 4 quarters)
  - Several components designed for 1,800+ tph (42,000 tpd) including electrical circuit, chutes, pumps and pump boxes

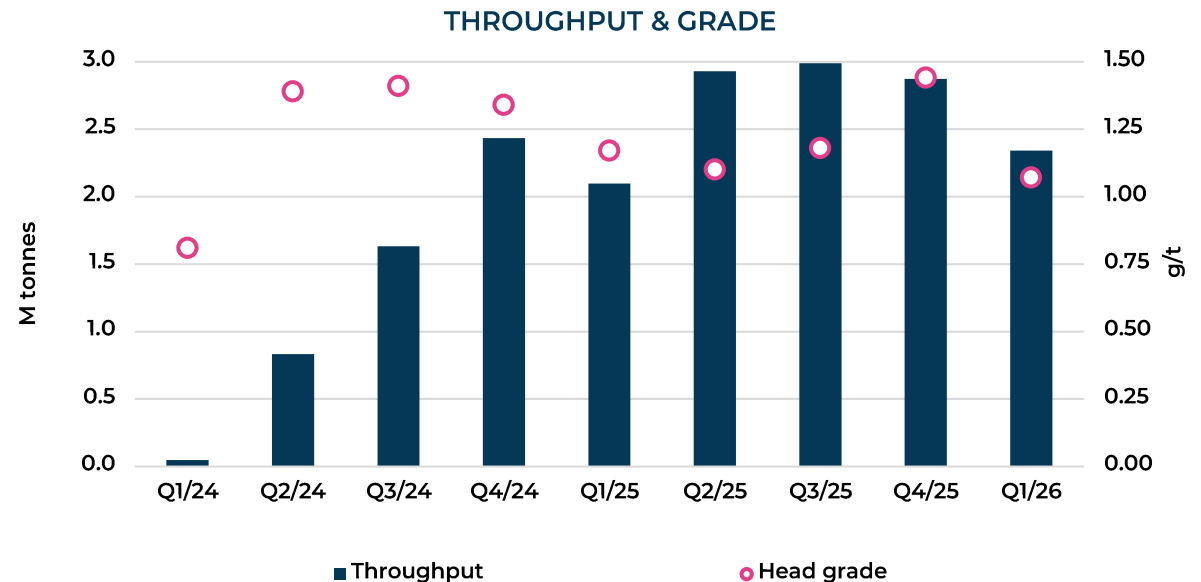
# PROCESSING PLANT

## RAMP UP OBSERVATIONS

- ✓ **Capacity Management:** Plant demonstrated early the ability to operate at or above nameplate throughput rates, increasing availability was priority
  - Recoveries stable above design rates despite fluctuating tonnages
  - Power usage less than estimates as crushing circuit efficiently managed ore hardness
- ✓ **Abrasiveness Resistance:** Early operations saw high amounts of wear on chutes and liners, replaced components with more abrasive resistant materials
- ✓ **Screening Refinement:** Screening building saw higher amounts of recirculating feed, refinements made to screening and maintenance
- ✓ **Crushing Bottleneck:** Secondary crusher was primary bottleneck identified in late 2024, third party mobile crusher added to provide additional capacity
  - Second cone crusher installed in Dec 2025
  - Reduced reliance on mobile crusher in H2 2026
- ✓ **HPGR Maintenance:** HGPR seeing improved life cycle of rolls following installation of second cone crusher
  - Parallel secondary crushing allowing for improved size of material being fed to the HPGR
- ✓ **Conveyor Replacement:** Primary conveyor replaced in May 2026 following increased damage on high wear areas once under higher load from second cone crusher

## MILLING OPERATIONS

(100% basis, unless otherwise stated)		Q1 2025	Q2 2025	Q3 2025	Q4 2025	Q1 2026
Ore milled	kt	2,097	2,930	2,988	2,874	2,341
Head grade	g/t	1.17	1.10	1.18	1.44	1.07
Recovery	%	93	93	94	94	93
<b>Production – 100%</b>	<b>koz</b>	73	96	106	124.6	74.7
<b>Production – attr. (60.3%)</b>	<b>koz</b>	51	67	75	87.2	52.3



# TAILINGS MANAGEMENT FACILITY

## DESIGN

- 203 Mt tailings (233 Mt design requires +5 m raise)
  - Updated mine plan investigating expansion potential of current facility
- TMF is closed circuit with tailings water and seepage captured and re-circulated to mill
- Tailings are non-acid generating rock and low metal leaching potential
- Dam construction:
  - Centerline, and Downstream raising methodology



## STAGE 3 PHASE 2 FACILITY (2026)



EOY Capacity	41.5 Mt	Current Pond Volume	3.0 Mm <sup>3</sup>
EOY Max Dam Height (m)	East Dam N: 53 East Dam S: 29 West Dam: 43 South Dam: 16	Current Pond Elevation	410.0
EOY Crest Elevation (m El)	East Dam N: 419 East Dam S: 423 West Dam: 423 South Dam: 423	Current Spillway	East Dam North

## ULTIMATE FACILITY



Capacity	233 Mt	Pond Volume	3.6 Mm <sup>3</sup>
Max Dam Height (m)	85	Pond Elevation	454.8
Crest Elevation (m El)	North Dam: 461 Other: 463	Spillway	North Dam

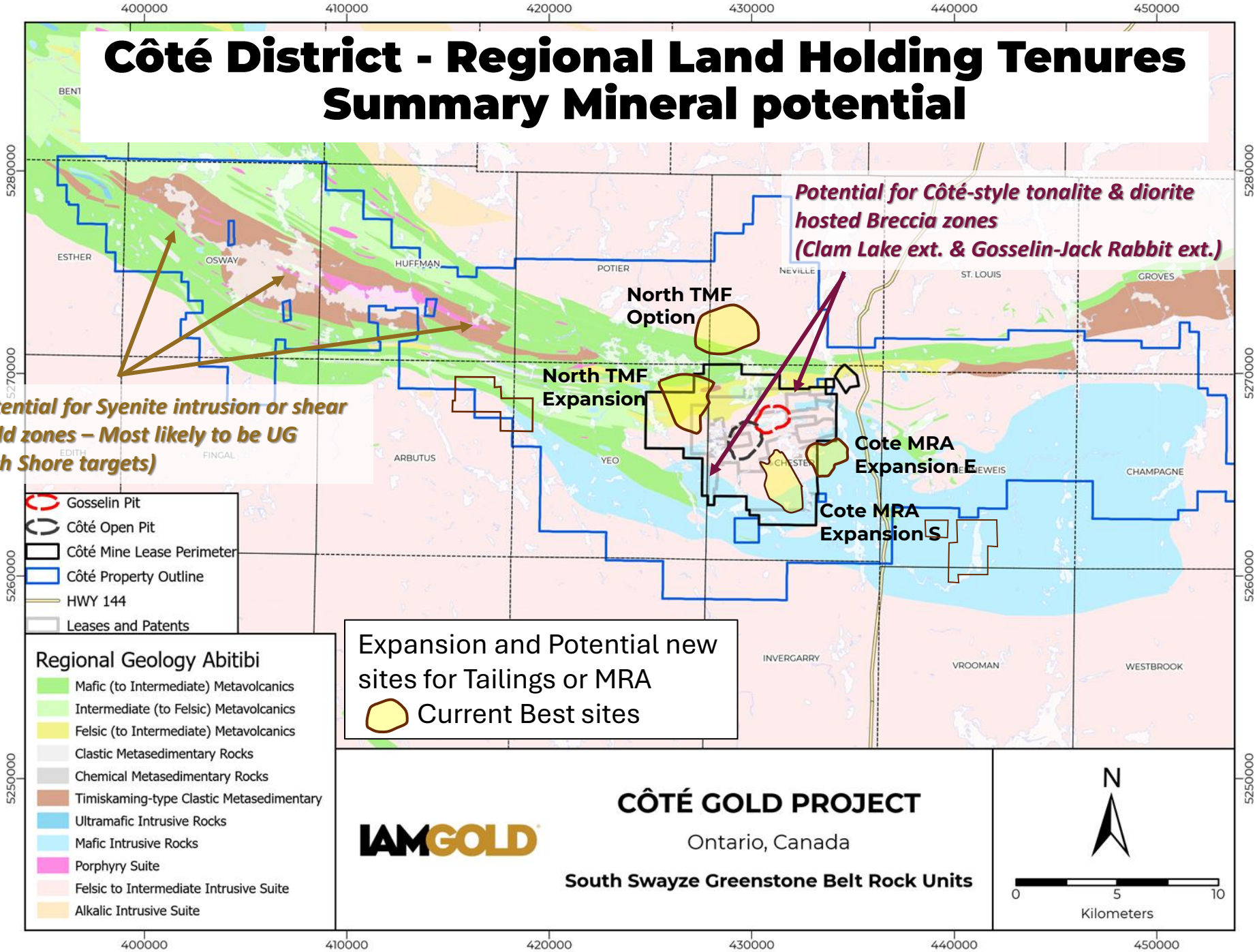
# EXPLORATION



# Côte District - Regional Land Holding Tenures Summary Mineral potential

*Exploration Potential for Syenite intrusion or shear zone hosted gold zones – Most likely to be UG (Jerome & North Shore targets)*

*Potential for Côte-style tonalite & diorite hosted Breccia zones (Clam Lake ext. & Gosselin-Jack Rabbit ext.)*



- Gosselin Pit
- Côte Open Pit
- Côte Mine Lease Perimeter
- Côte Property Outline
- HWY 144
- Leases and Patents

- Regional Geology Abitibi**
- Mafic (to Intermediate) Metavolcanics
  - Intermediate (to Felsic) Metavolcanics
  - Felsic (to Intermediate) Metavolcanics
  - Clastic Metasedimentary Rocks
  - Chemical Metasedimentary Rocks
  - Timiskaming-type Clastic Metasedimentary
  - Ultramafic Intrusive Rocks
  - Mafic Intrusive Rocks
  - Porphyry Suite
  - Felsic to Intermediate Intrusive Suite
  - Alkalic Intrusive Suite

Expansion and Potential new sites for Tailings or MRA  
 Current Best sites

**IAMGOLD**

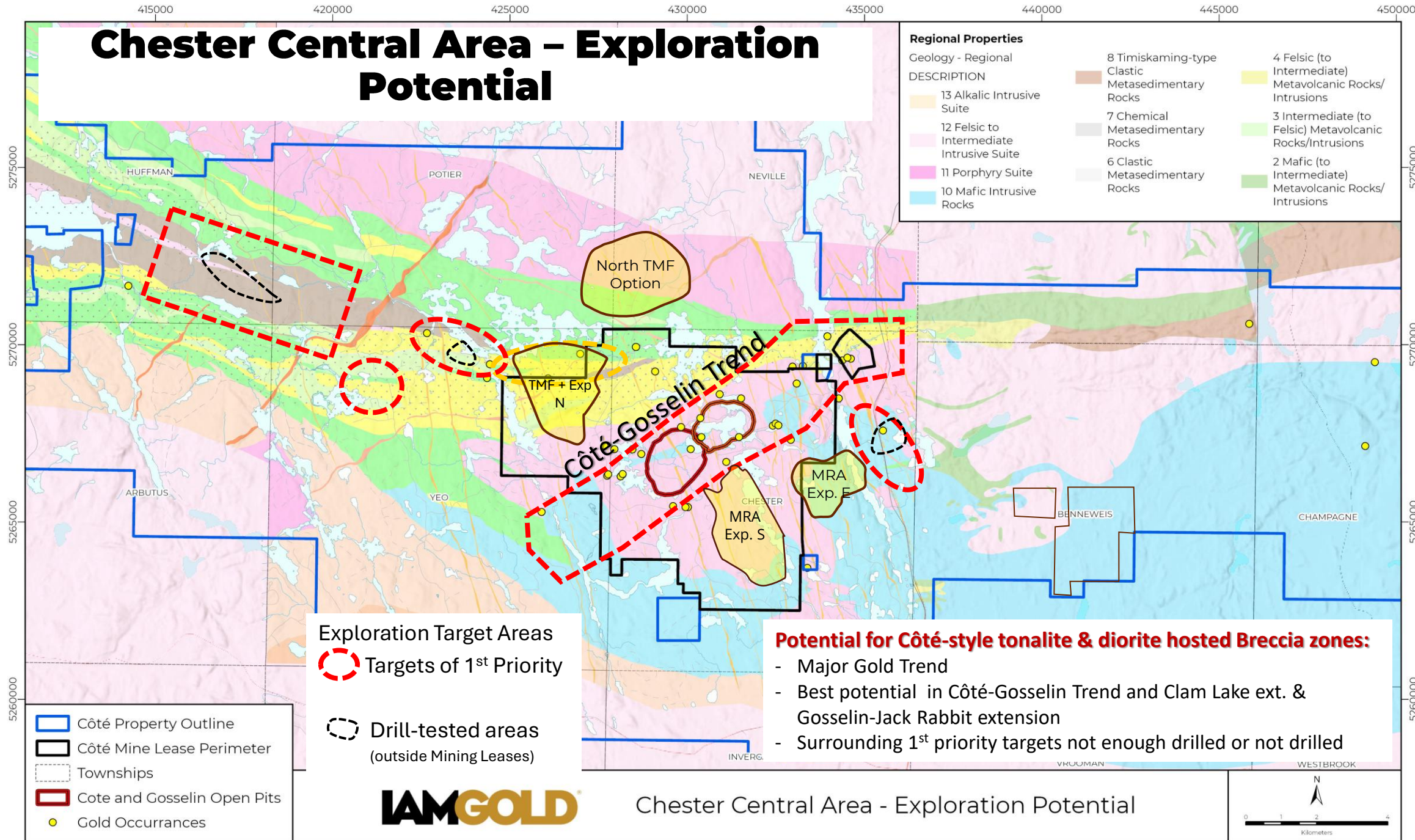
**CÔTÉ GOLD PROJECT**  
Ontario, Canada

**South Swayze Greenstone Belt Rock Units**

N

0 5 10  
Kilometers

# Chester Central Area - Exploration Potential



**Regional Properties**

Geology - Regional		
DESCRIPTION		
13 Alkalic Intrusive Suite	8 Timiskaming-type Clastic Metasedimentary Rocks	4 Felsic (to Intermediate) Metavolcanic Rocks/Intrusions
12 Felsic to Intermediate Intrusive Suite	7 Chemical Metasedimentary Rocks	3 Intermediate (to Felsic) Metavolcanic Rocks/Intrusions
11 Porphyry Suite	6 Clastic Metasedimentary Rocks	2 Mafic (to Intermediate) Metavolcanic Rocks/Intrusions
10 Mafic Intrusive Rocks		

**Exploration Target Areas**

- Targets of 1<sup>st</sup> Priority
- Drill-tested areas (outside Mining Leases)

- Côte Property Outline
- Côte Mine Lease Perimeter
- Townships
- Cote and Gosselin Open Pits
- Gold Occurrences

**Potential for Côte-style tonalite & diorite hosted Breccia zones:**

- Major Gold Trend
- Best potential in Côte-Gosselin Trend and Clam Lake ext. & Gosselin-Jack Rabbit extension
- Surrounding 1<sup>st</sup> priority targets not enough drilled or not drilled



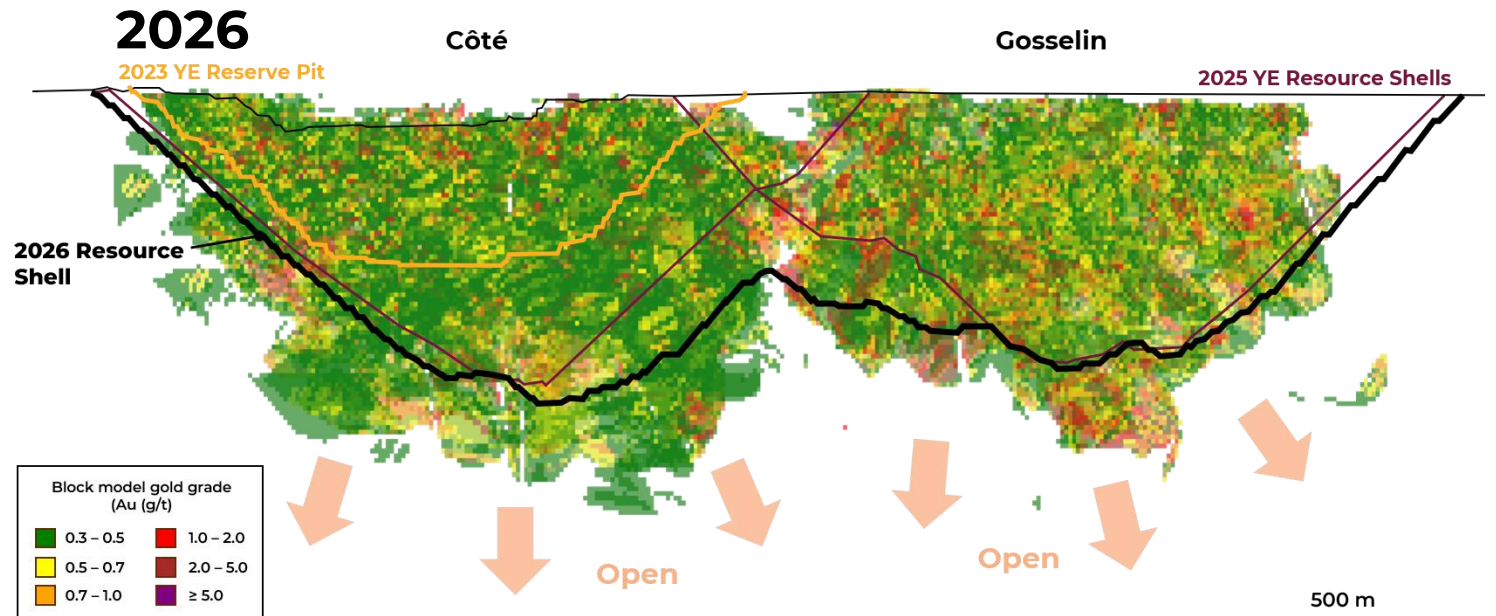
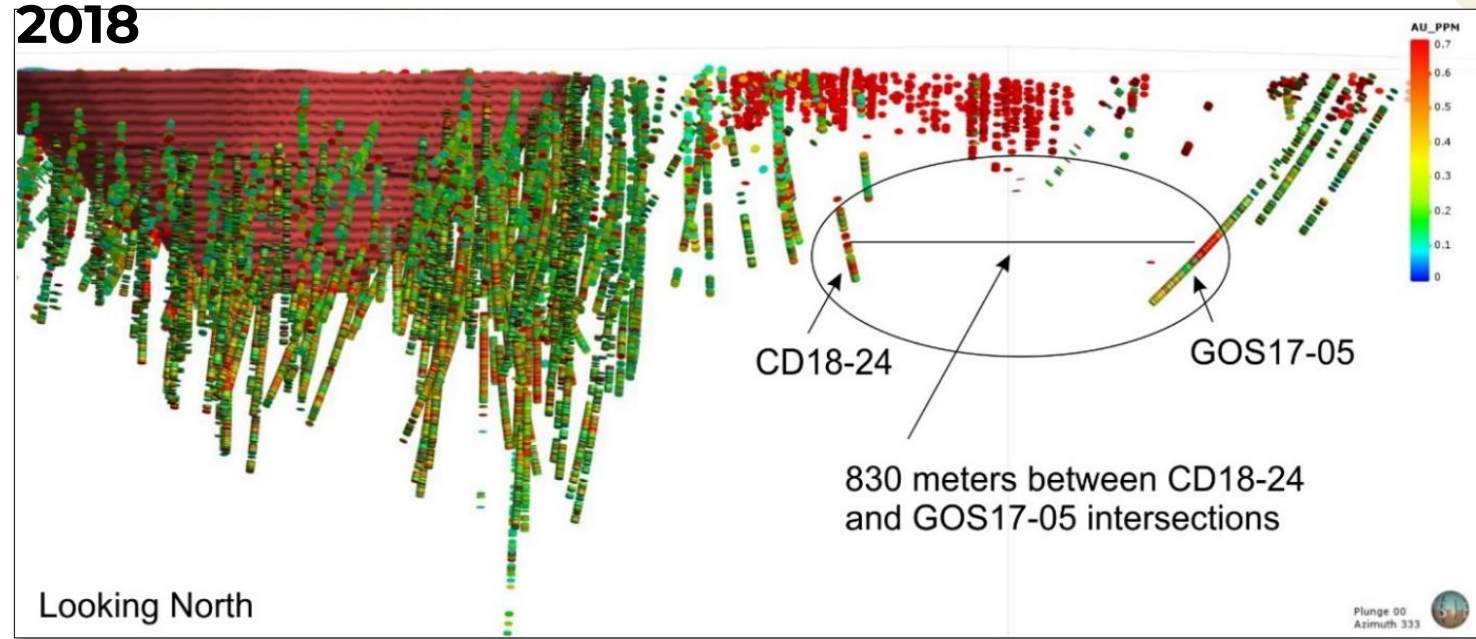
Chester Central Area - Exploration Potential



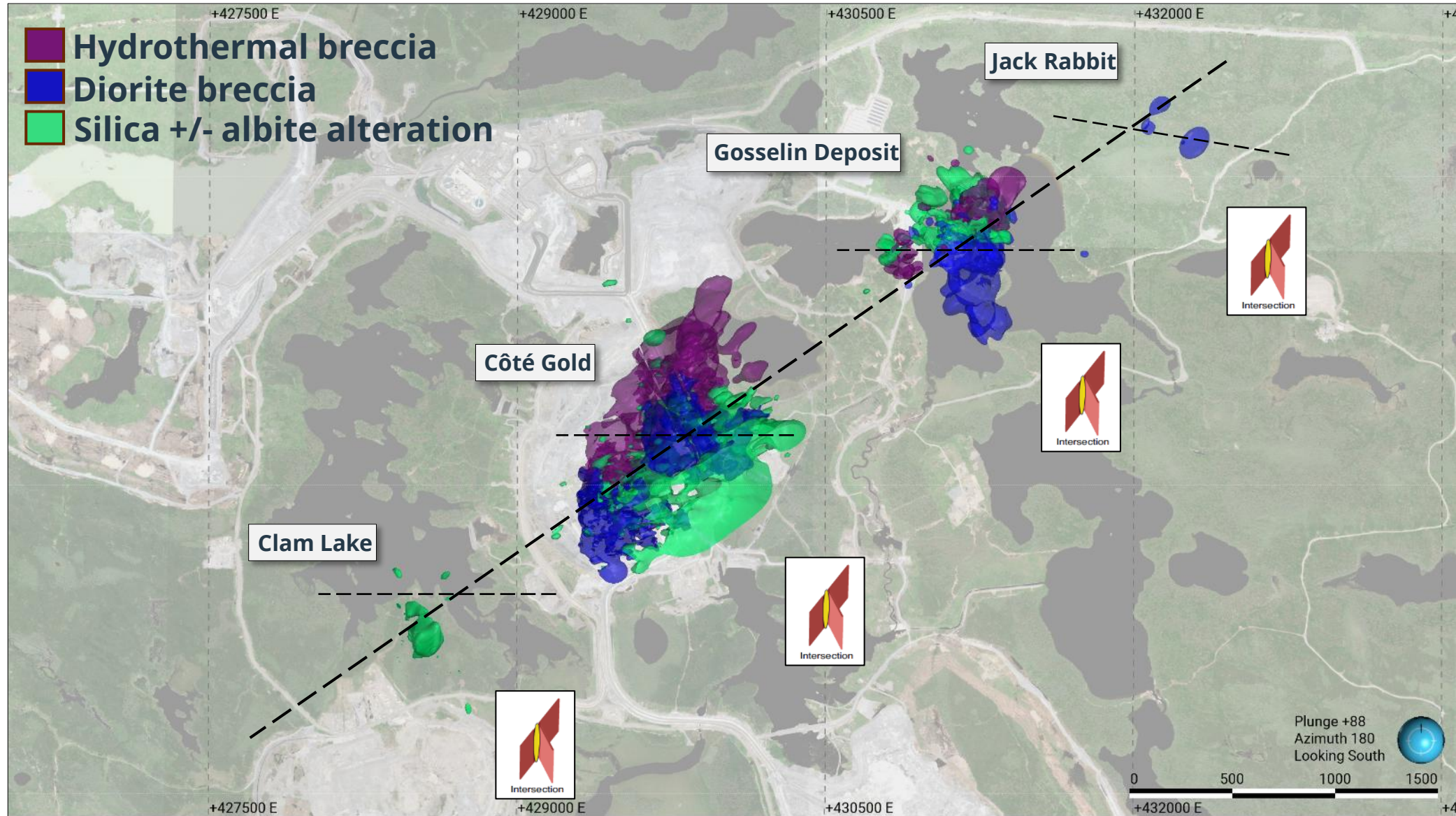
# GOSSELIN DEPOSIT ~8 YEARS AGO

From the May 31<sup>st</sup> 2018, exploration weekly report

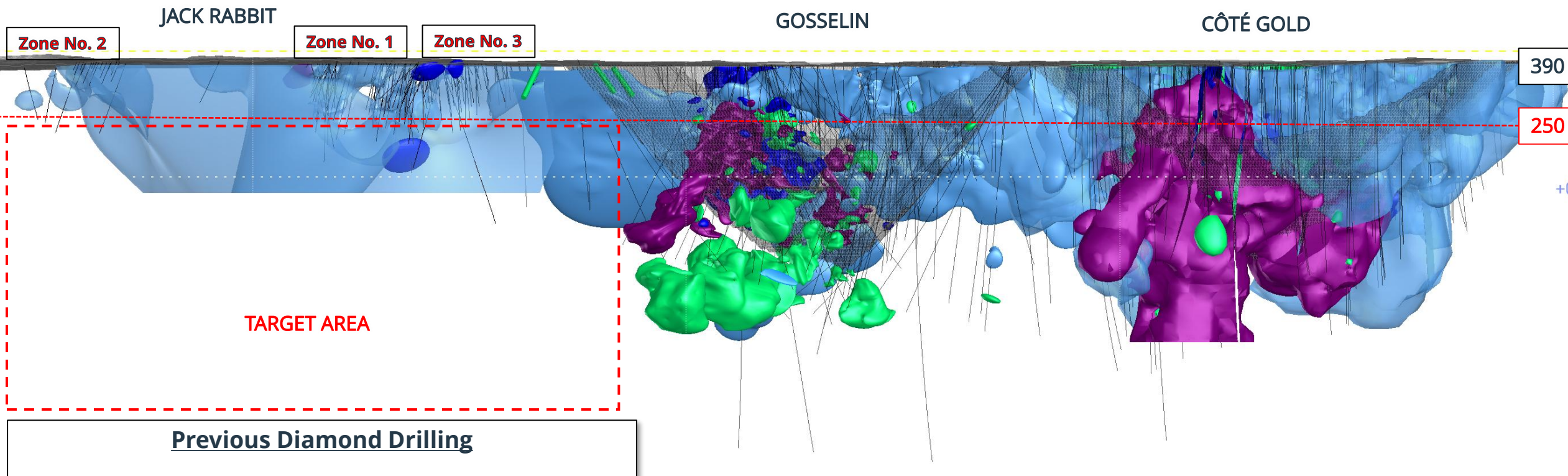
- CD18-024 returned a broad **231 m of 0.62 g/t Au**, indicating persistent low-grade mineralization at depth.
- The intersection lies **~330m below the Young-Shannon trend**, suggesting a deeper, continuous gold system.
- The underexplored corridor between Young-Shannon and Gosselin **may host additional lower-grade mineralization.**



# CHESTER REGIONAL EXPLORATION - STRUCTURAL CORRIDOR THEORY



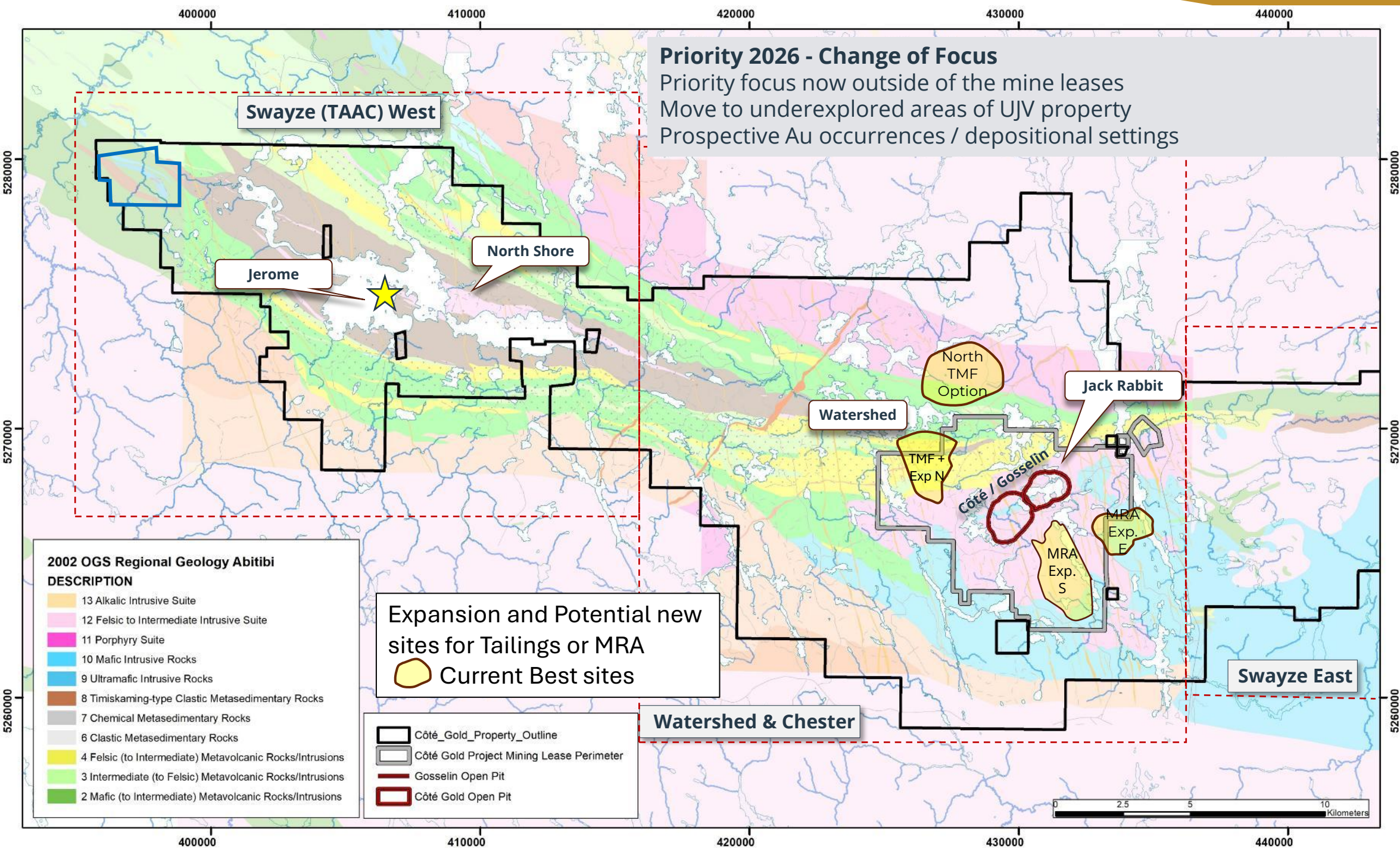
# LONG SECTION - LOOKING SOUTH



### Previous Diamond Drilling

- Tightly clustered
- Depth of testing mostly above 250m vertical
- Narrow corridors of testing (<200m wide) along strike from structurally hosted high-grade vein mineralization
  - **bulk tonnage system previously not considered/targeted**





### Priority 2026 - Change of Focus

Priority focus now outside of the mine leases  
 Move to underexplored areas of UJV property  
 Prospective Au occurrences / depositional settings

**2002 OGS Regional Geology Abitibi**

**DESCRIPTION**

- 13 Alkalic Intrusive Suite
- 12 Felsic to Intermediate Intrusive Suite
- 11 Porphyry Suite
- 10 Mafic Intrusive Rocks
- 9 Ultramafic Intrusive Rocks
- 8 Timiskaming-type Clastic Metasedimentary Rocks
- 7 Chemical Metasedimentary Rocks
- 6 Clastic Metasedimentary Rocks
- 4 Felsic (to Intermediate) Metavolcanic Rocks/Intrusions
- 3 Intermediate (to Felsic) Metavolcanic Rocks/Intrusions
- 2 Mafic (to Intermediate) Metavolcanic Rocks/Intrusions

Expansion and Potential new sites for Tailings or MRA

  Current Best sites

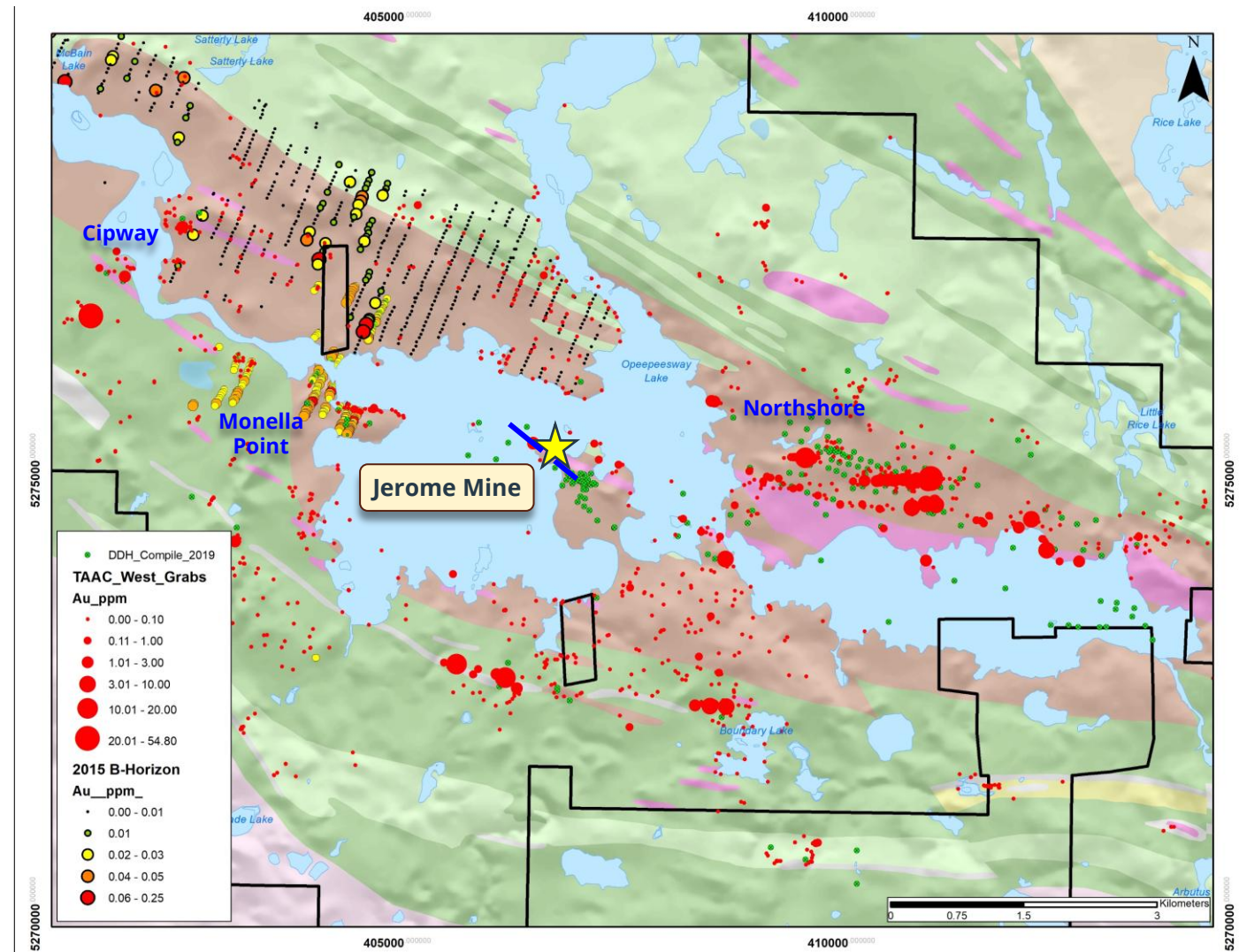
- Côte\_Gold\_Property\_Outline
- Côte Gold Project Mining Lease Perimeter
- Gosselin Open Pit
- Côte Gold Open Pit



# SWAYZE WEST REGIONAL EXPLORATION – JÉRÔME DEPOSIT

- Jérôme Au – Ag Deposit hosted in veins along structural porphyry / sediment contact
- Milled grade **5.82 g/t Au** (56,878 oz and 1.55 g/t Ag). Au – Ag – Mo association.
- Deposit Model : Young Davidson Mine (Matachewan) Structural vein networks in hydrothermal envelope hosted in QFP
- Region *underexplored* with modern methods
- Targets / Prospects: Monella Point (IMG Discovery), CIPWAY, Northshore zones

## Temiskaming Sediments / Porphyry contact on 25 km strike



# RESPONSIBILITY AND COMMUNITY

A sustainable and positive legacy

2025 DATA

## 2024 Achievements

- Updated state of the art Occupational Health Centre & Staffing
- Implementation of Alcohol & Drug program site wide
- Implementation of Industrial Hygiene programs

## 2025 Achievements

- Continued to decrease injury rates (0 LTI since Oct 2024)
- Functional Job Analysis database to identify musculoskeletal disorder risks
- Developed strategic wellness program for site

## 2026 Plan

- Implementation of CRM Program
- Revitalization of MBA & FLRA Routines
- Implementation Contractor Management Program
- LOTO Process Improvements



**0.59**

ACHIEVED TRIFR

**TOTAL RECORDABLE INJURY FREQUENCY RATE**

### EMBEDDING CRITICAL RISK MANAGEMENT ACROSS OUR OPERATIONS

#### We strengthened our critical risk awareness program in 2025.

As part of the roll-out, Côté introduced **Critical Risk MBA (Mind Body Achievement) Boards**, which provide structured visuals for reviewing high-risk tasks and the required controls. These boards are now used at the start of every shift, prompting teams to actively discuss the critical risks associated with planned work and identify the necessary controls before proceeding to work.



## We have two Impact Benefit Agreements with Indigenous partners:

1. First Nation Partners IBA with Mattagami First Nation and Flying Post First Nation, signed April 2019
2. Métis Nation of Ontario, Region 3 IBA, signed May 2021



## The IBAs are designed to:

- Optimize employment and training
- Ensure health and wellness of Indigenous employees
- Maximize Indigenous participation in business and contracting opportunities
- Ensure Environmental protection all stage of mine life cycle

## Côté in the Community

Sponsorships

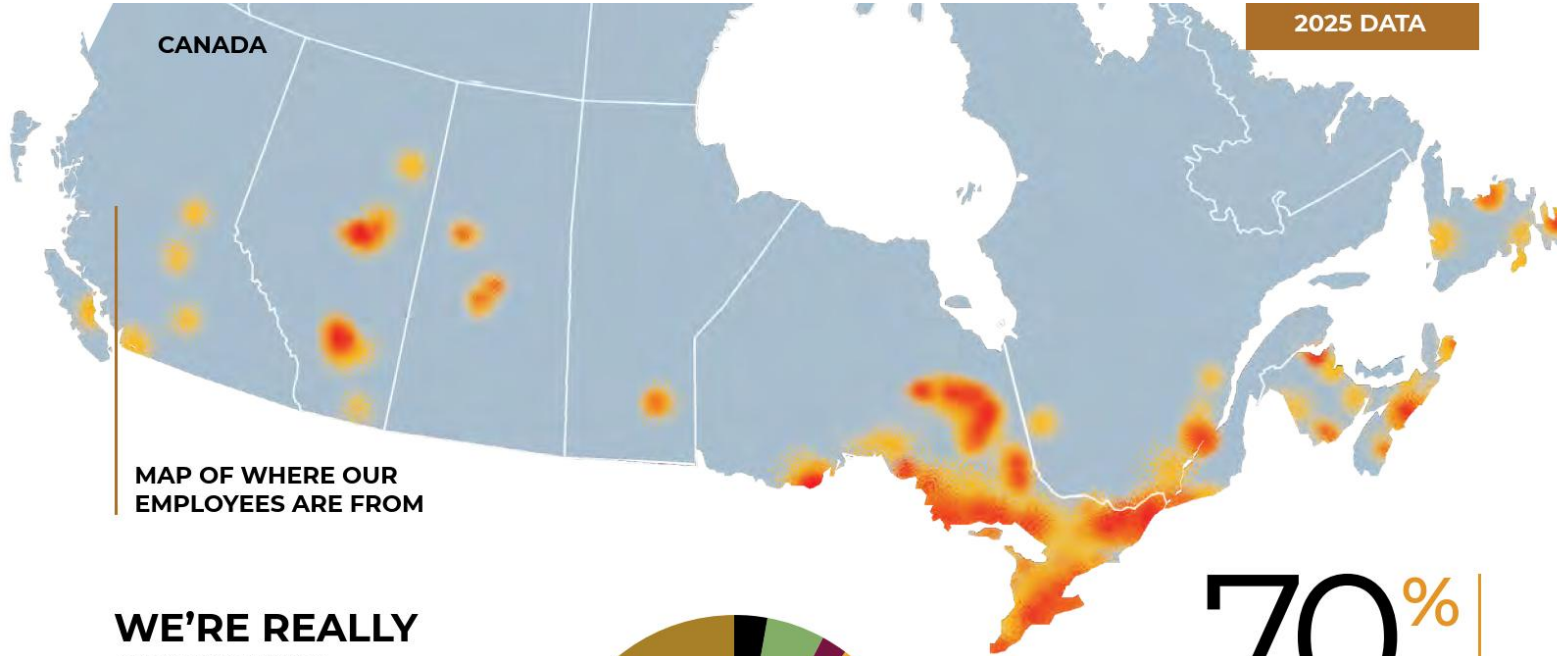
Donations

Community Investments

Côté Gold's Community Benefits program supports sustainable development of the following host communities:

- Indigenous Partner Communities
- City of Greater Sudbury
- City of Timmins
- Community of Gogama
- Mesomikenda Cottagers

We collaborate with our First Nation Partners and neighbouring community of Gogama to monitor and manage our social and environmental impacts through joint committees.



MAP OF WHERE OUR EMPLOYEES ARE FROM

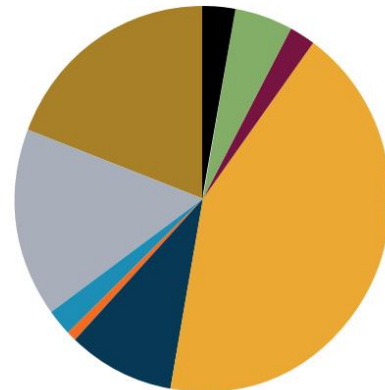
**There are currently 263 employees from Greater Sudbury + Timmins areas**

- Equipment Operation: 69
- Trades/Apprentices/labourer: 40
- Engineers/Specialists/Technologist: 25
- Leadership: 33
- Geology: 12
- Supply Chain: 11
- Finance: 10
- IT: 8
- Safety & Environment: 10
- HR & Communications: 5
- Administration: 5
- Security: 4
- Planners: 3
- Control Room: 11
- Projects: 3

## WE'RE REALLY GROWING

2024 **555**  
EMPLOYEES

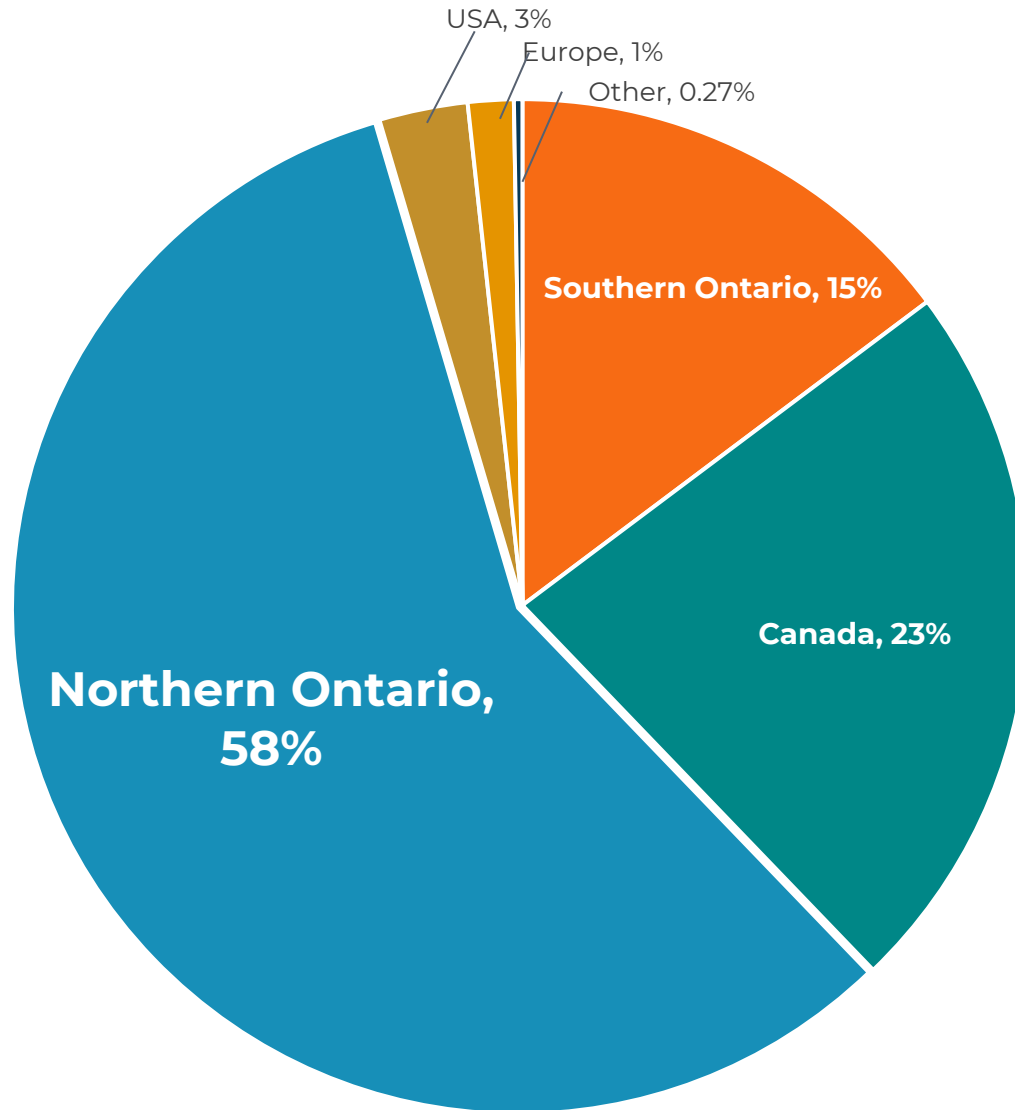
2025 **652**  
EMPLOYEES



**70%**

OF OUR EMPLOYEES ARE FROM NORTHERN ONTARIO

- GREATER SUDBURY
- GOGAMA
- ESPANOLA
- COCHRANE
- OTHER
- TIMMINS
- TEMISKAMING SHORES
- MATTAGAMI FIRST NATION
- KAPUSKASING



## Côte Gold 2025

**Operating costs:  
\$361 million**

**Capital expenditures:  
\$127 million**

# ENVIRONMENT

## Water Quality Monitoring

- Surface Water Monitoring
- Lake Monitoring
- Hydrometric Monitoring
- Potential Acid Generating (PAG) Cell Monitoring
- Compliance and Due Diligence Monitoring
- Groundwater Monitoring

**432**

**Surface Water Samples**  
*collected in 2025*

## Biodiversity Monitoring

- Breeding Bird and Nightjar Monitoring
- Walleye Spawning Monitoring
- Ungulate and Furbearer Monitoring
- Reclamation Monitoring
- Bat Acoustic Monitoring
- Site-wide Wildlife Observation Submissions
- Invasive Species Monitoring

**295**

**Groundwater Samples**  
*collected in 2025*

## Air Quality Monitoring

- High Volume Air Monitoring
- Dustfall Monitoring
- Passive Air Monitoring

**437**

**Air Samples**  
*collected in 2025*



*2025 Walleye Spawning Surveys*



*2025 Winter Aerial Surveys*

# FISHERIES OFFSETTING: OSHKI LAKE



**Water Ceremony**  
Oshki Lake, June 2024



# FISHERIES OFFSETTING: MIDDLE THREE DUCK LAKE EXTENSION



**New aquatic habitat**

**~111,610 m<sup>2</sup> / 27 acres of newly constructed fish habitat**

*Existing Middle Three Duck Lake*



**Standing snags for raptor nesting and perching**

**Sandy shorelines for turtle nesting**



**Aquatic macrophytes, woody debris, and vegetated mounds for fish habitat**



**Cobble and rock piles for fish spawning**



**9,000 shrubs planted  
10 acres hydroseeded**

# APPENDIX



# GOLD MINERAL RESERVES<sup>1,2,3</sup> – 100% BASIS

As of December 31, 2025				PROVEN			PROBABLE			P+P MINERAL RESERVES		
DEPOSIT	Type*	Location	Ownership	Tonnes (000's)	Grade (g/t)	Ounces (000's)	Tonnes (000's)	Grade (g/t)	Ounces (000's)	Tonnes (000's)	Grade (g/t)	Ounces (000's)
<b>Côté Gold<sup>3</sup></b>	OP	Canada	70%	116,055	1.05	3,902	101,112	0.97	3,139	217,167	1.01	7,041
<b>Westwood<sup>4</sup></b>	UG + OP	Canada	100%	1,555	6.63	331	3,803	6.68	817	5,358	6.67	1,148
<b>Essakane<sup>5</sup></b>	OP	Burkina Faso	85%	22,178	0.64	457	34,903	1.09	1,219	57,081	0.91	1,676
<b>TOTAL RESERVES<sup>1</sup></b>				<b>139,788</b>	<b>1.04</b>	<b>4,690</b>	<b>139,818</b>	<b>1.15</b>	<b>5,175</b>	<b>279,606</b>	<b>1.10</b>	<b>9,865</b>

\* OP = Open Pit; UG = Underground

1 Figures may not add due to rounding.

2 2025 Mineral Reserves estimated as of December 31, 2025, using a gold price of \$2,000/oz for Westwood (including Grand Duc) and Essakane; and \$1,700/oz for Côté Gold.

3 Côté Gold Mineral Reserves as of December 31, 2025 were estimated using a 0.46 g/t Au cut-off grade, up from 0.35 g/t Au at year end 2024.

4 Westwood (underground) Mineral Reserves as of December 31, 2025 were estimated using a 6.40 g/t Au cut-off grade, down from 6.82 g/t at year end 2024; Grand Duc Mineral Reserves as of December 31, 2025 were estimated using a 0.59 g/t cut-off grade, up from 0.54 g/t at year end 2024.

5 Essakane Mineral Reserves as of December 31, 2025 were estimated using a cut-off grade range of 0.31–0.44 g/t Au, down from of 0.39–0.55 g/t Au at year end 2024.

# GOLD MINERAL RESOURCES<sup>1,2,3,4,5</sup> – 100% BASIS

DEPOSIT	Type*	Location	Ownership	MEASURED			INDICATED			MEASURED + INDICATED			INFERRED		
				Tonnes (000's)	Grade (g/t)	Ounces (000's)	Tonnes (000's)	Grade (g/t)	Ounces (000's)	Tonnes (000's)	Grade (g/t)	Ounces (000's)	Tonnes (000's)	Grade (g/t)	Ounces (000's)
<b>Côte Gold</b> (incl. Gosselin) <sup>1,5</sup>	OP	Canada	70%	164,364	0.89	4,712	673,623	0.72	15,629	837,987	0.75	20,341	177,128	0.61	3,479
<b>Westwood</b>	UG+OP	Canada	100%	1,619	7.21	375	10,324	6.09	2,022	11,943	6.24	2,397	4,507	10.46	1,515
<b>Essakane</b>	OP	Burkina Faso	85%	38,312	0.52	640	111,683	1.05	3,772	149,995	0.91	4,412	24,195	1.1	853
<b>Gossey</b>	OP	Burkina Faso	85%				14,795	0.75	355	14,795	0.75	355	2,688	0.85	74
<b>Nelligan</b>	OP	Canada	100%				122,000	0.95	3,700	122,000	0.95	3,700	151,000	0.96	4,647
<b>Monster Lake</b>	UG	Canada	100%				243	13.04	102	243	13.04	102	1,046	14.83	499
<b>Philibert</b> <sup>7</sup>	OP	Canada	100%				7,884	1.10	279	7,884	1.10	279	48,465	1.10	1,709
<b>Chevrier</b> <sup>7</sup>	OP	Canada	100%				6,400	1.26	260	6,400	1.26	260	15,660	1.30	652
<b>Nelligan Complex Total</b>		Canada	100%				136,527	0.99	4,341	136,527	0.99	4,341	216,171	1.08	7,507
<b>Diakha-Siribaya</b> <sup>6</sup>	OP	Mali	90%				27,937	1.48	1,325	27,937	1.48	1,325	8,468	1.53	417
<b>TOTAL RESOURCES</b> <sup>1</sup>				<b>204,295</b>	<b>0.87</b>	<b>5,727</b>	<b>974,889</b>	<b>0.88</b>	<b>27,444</b>	<b>1,179,184</b>	<b>0.87</b>	<b>33,171</b>	<b>433,157</b>	<b>0.99</b>	<b>13,845</b>

\* OP = Open Pit; UG = Underground

1 Mineral Resources as of December 31, 2025, except at Côte Gold which is as of March 31, 2026

2 Figures may not add due to rounding.

3 See "Cautionary Note to U.S. Investors Regarding Disclosure of Mineral Reserves and Mineral Resources Estimates".

4 Mineral Resources estimated as of December 31, 2025, using a gold price of: \$2,500 per ounce for Essakane, Westwood (incl. Grand Duc), Nelligan, Monster Lake and Gossey; \$1,800/oz for Chevrier, \$1747/oz for Philibert.

5 Mineral Resources estimated as of March 31, 2026, using a gold price of \$2,500 per ounce for Côte Gold

6 Diakha-Siribaya Mineral Resources are unchanged from the prior year, with an unchanged gold price of \$1,500 per ounce. The definitive agreement to sell the Diakha-Siribaya Gold Project in Mali to Managem S.A. expired on December 31, 2024, and was not extended. The Company is pursuing alternative options for the sale of this asset.

7 Philibert and Chevrier were acquired with the closing of the Northern Superior transaction in December 2025. The prior Mineral Resources estimates for these assets are based on data as reported in the respective NI 43-101 Technical Reports. Philibert and Chevrier Mineral Resources are estimated as of December 31, 2025, using a gold price of \$1,748 and \$1,800 per ounce respectively.





**IAMGOLD<sup>®</sup> | MINING.  
REDEFINED.**

**GRAEME JENNINGS, VP, BUSINESS DEVELOPMENT & IR**

**416-388-6833**

**TSX: IMG | NYSE: IAG | [www.iamgold.com](http://www.iamgold.com)**