



# IAMGOLD<sup>®</sup>

C O R P O R A T I O N



## CORPORATE PRESENTATION

June 2024



# Cautionary Statement

## CAUTIONARY STATEMENT REGARDING FORWARD-LOOKING INFORMATION

All information included or incorporated by reference in this presentation, including any information as to the Company's future financial or operating performance and other statements that express management's expectations or estimates of future performance, including statements in respect of the prospects and/or development of the Company's projects, other than statements of historical fact, constitutes forward-looking information or forward-looking statements within the meaning of applicable securities laws (collectively referred to herein as "forward-looking statements") and such forward-looking statements are based on expectations, estimates and projections as of the date of this presentation. Forward-looking statements are generally identifiable by the use of words such as "may", "will", "should", "would", "could", "continue", "expect", "budget", "aim", "can", "focus", "forecast", "anticipate", "estimate", "believe", "intend", "plan", "schedule", "guidance", "outlook", "potential", "seek", "targets", "cover", "strategy", "during", "ongoing", "subject to", "future", "objectives", "opportunities", "committed", "prospective", or "project" or the negative of these words or other variations on these words or comparable terminology. For example, forward-looking statements in this presentation include, without limitation, those under the headings "About IAMGOLD", "Highlights", "Outlook", "Environmental, Social and Governance", "Quarterly Updates", "Financial Condition" and "Quarterly Financial Review" and include, but are not limited to, statements with respect to: the estimation of mineral reserves and mineral resources and the realization of such estimates; operational and financial performance including the Company's guidance for and actual results of production, costs and capital and other expenditures such as exploration and including depreciation expense and effective tax rate; the expected costs and schedule to complete construction and commissioning of the Côté Gold Mine; the updated life-of-mine plan, ramp-up assumptions and other project metrics including operating costs in respect to the Côté Gold Mine; expected production of the Côté Gold Mine, expected benefits from the operational improvements and de-risking strategies implemented or to be implemented by the Company; mine development activities; the Company's capital allocation and liquidity; the composition of the Company's portfolio of assets including its operating mines, development and exploration projects; the completion of the sale of the Bambouk Assets; the completion of the acquisition of EURO Ressources S.A., permitting timelines and the expected receipt of permits; inflation, including global inflation and inflationary pressures; global supply chain constraints; environmental verification, biodiversity and social development projects; the ability to secure alternative sources of consumables of comparable quality and on reasonable terms; workforce and contractor availability, labour costs and other labour impacts; the impacts of weather; the future price of gold and other commodities; foreign exchange rates and currency fluctuations; financial instruments; hedging strategies; impairment assessments and assets carrying values estimates; safety and security concerns in the jurisdictions in which the Company operates and the impact thereof on the Company's operational and financial performance and financial condition; and government regulation of mining operations.

The Company cautions the reader that forward-looking statements are necessarily based upon a number of estimates and assumptions that, while considered reasonable by management, are inherently subject to significant business, financial, operational and other risks, uncertainties, contingencies and other factors, including those described below, which could cause actual results, performance or achievements of the Company to be materially different from results, performance or achievements expressed or implied by such forward-looking statements and, as such, undue reliance must not be placed on them. Forward-looking statements are also based on numerous material factors and assumptions, including as described in this presentation, including with respect to: the Company's present and future business strategies; operations performance within expected ranges; anticipated future production and cash flows; local and global economic conditions and the environment in which the Company will operate in the future; the price of precious metals, other minerals and key commodities; projected mineral grades; international exchanges rates; anticipated capital and operating costs; the availability and timing of required governmental and other approvals for the construction of the Company's projects.

Risks, uncertainties, contingencies and other factors that could cause actual results, performance or achievements of the Company to be materially different from results, performance or achievements expressed or implied by such forward-looking statements include, without limitation: the ability of the Company to successfully complete the commissioning of Côté Gold and commence commercial production from the mine; the ability of the Company to complete the sales of the remaining Bambouk Assets; the Company's business strategies and its ability to execute thereon; the ability of the Company to complete pending transactions; security risks, including civil unrest, war or terrorism and disruptions to the Company's supply chain and transit routes as a result of such security risks, particularly in Burkina Faso and the Sahel region surrounding the Company's Essakane mine; the availability of labour and qualified contractors; the availability of key inputs for the Company's operations and disruptions in global supply chains; the volatility of the Company's securities; litigation; contests over title to properties, particularly title to undeveloped properties; mine closure and rehabilitation risks; management of certain of the Company's assets by other companies or joint venture partners; the lack of availability of insurance covering all of the risks associated with a mining company's operations; unexpected geological conditions; competition and consolidation in the mining sector; the profitability of the Company being highly dependent on the condition and results of the mining industry as a whole, and the gold mining industry in particular; changes in the global prices for gold, and commodities used in the operation of the Company's business (included, but not limited to diesel, fuel oil and electricity); legal, litigation, legislative, political or economic risks and new developments in the jurisdictions in which the Company carries on business; changes in taxes, including mining tax regimes; the failure to obtain in a timely manner from authorities key permits, authorizations or approvals necessary for transactions, exploration, development or operation, operating or technical difficulties in connection with mining or development activities, including geotechnical difficulties and major equipment failure; the inability of the Company to participate in any gold price increase above the cap in any collar transaction entered into in conjunction with certain gold sale prepayment arrangements; the availability of capital; the level of liquidity and capital resources; access to capital markets and financing; the Company's level of indebtedness; the Company's ability to satisfy covenants under its credit facilities; changes in interest rates; adverse changes in the Company's credit rating; the Company's choices in capital allocation; effectiveness of the Company's ongoing cost containment efforts; the Company's ability to execute on de-risking activities and measures to improve operations; availability of specific assets to meet contractual obligations; risks related to third-party contractors, including reduced control over aspects of the Company's operations and/or the failure and/or the effectiveness of contractors to perform; risks arising from holding derivative instruments; changes in U.S. dollar and other currency exchange rates or gold lease rates; capital and currency controls in foreign jurisdictions; assessment of carrying values for the Company's assets, including the ongoing potential for material impairment and/or write-downs of such assets; the speculative nature of exploration and development, including the risks of diminishing quantities or grades of reserves; the fact that reserves and resources, expected metallurgical recoveries, capital and operating costs are estimates which may require revision; the presence of unfavourable content in ore deposits, including clay and coarse gold; inaccuracies in life of mine plans; failure to meet operational targets; equipment malfunctions; information systems security threats and cybersecurity; laws and regulations governing the protection of the environment; employee relations and labour disputes; the maintenance of tailings storage facilities and the potential for a major spill or failure of the tailings facilities due to uncontrollable events, lack of reliable infrastructure, including access to roads, bridges, power sources and water supplies; physical and regulatory risks related to climate change; unpredictable weather patterns and challenging weather conditions at mine sites; disruptions from weather related events resulting in limited or no productivity such as forest fires, flooding, heavy snowfall, poor air quality, and extreme heat or cold; attraction and retention of key employees and other qualified personnel; availability and increasing costs associated with mining inputs and labour, negotiations with respect to new, reasonable collective labour agreements and/or collective bargaining agreements may not be agreed to; the ability of contractors to timely complete projects on acceptable terms; the relationship with the communities surrounding the Company's operations and projects; indigenous rights or claims; illegal mining; the potential direct or indirect operational impacts resulting from external factors, including infectious diseases, pandemics, or other public health emergencies; and the inherent risks involved in the exploration, development and mining business generally. Please see the Company's AIF or Form 40-F available on [www.sedarplus.ca](http://www.sedarplus.ca) or [www.sec.gov/edgar](http://www.sec.gov/edgar) for a comprehensive discussion of the risks faced by the Company and which may cause actual results, performance or achievements of the Company to be materially different from results, performance or achievements expressed or implied by forward-looking statements.

Although the Company has attempted to identify important factors that could cause actual results to differ materially from those contained in forward-looking statements, there may be other factors that cause results not to be as anticipated, estimated or intended. The Company disclaims any intention or obligation to update or revise any forward-looking statements whether as a result of new information, future events or otherwise except as required by applicable law.

# Technical Information and Qualified Persons

## CAUTIONARY NOTE TO U.S. INVESTORS REGARDING DISCLOSURE OF MINERAL RESERVE AND MINERAL RESOURCE ESTIMATES

The mineral resource and reserve estimates contained in this news release have been prepared in accordance with NI 43-101 and the Canadian Institute of Mining, Metallurgy and Petroleum ("CIM") – CIM Definition Standards on Mineral Resources and Mineral Reserves, adopted by the CIM Council, as amended (the "CIM Standards"). These standards are similar to those found in subpart 1300 of Regulation S-K, used by the United States Securities and Exchange Commission (the "SEC"). However, the definitions in NI 43-101 and the CIM Standards differ in certain respects from those under subpart 1300 of Regulation S-K. Accordingly, mineral resource and reserve information contained in this news release may not be comparable to similar information disclosed by United States companies.

As a result of the adoption of subpart 1300 of Regulation S-K (the "SEC Modernization Rules"), which more closely align its disclosure requirements and policies for mining properties with current industry and global regulatory practices and standards, including NI 43-101 and the CIM Standards, and which became effective on February 25, 2019, the SEC now recognizes estimates of "measured mineral resources", "indicated mineral resources" and "inferred mineral resources." In addition, the SEC has amended definitions of "proven mineral reserves" and "probable mineral reserves" in its amended rules, with definitions that are substantially similar to those used in NI 43-101 and the CIM Standards. Issuers must begin to comply with the SEC Modernization Rules in their first fiscal year beginning on or after January 1, 2022, though Canadian issuers that report in the United States using the Multijurisdictional Disclosure System ("MJDS") may still use NI 43-101 rather than the SEC Modernization Rules when using the SEC's MJDS registration statement and annual report forms.

United States investors are cautioned that while the SEC now recognizes "measured mineral resources", "indicated mineral resources" and "inferred mineral resources" under the SEC Modernization Rules, investors should not assume that any part or all of the mineral deposits in these categories will ever be converted into a higher category of mineral resources or into mineral reserves. These terms have a great amount of uncertainty as to their economic and legal feasibility. Under Canadian regulations, estimates of inferred mineral resources may not form the basis of feasibility or pre-feasibility studies, except in limited circumstances.

Investors are cautioned not to assume that any "measured mineral resources", "indicated mineral resources", or "inferred mineral resources" that the Company reports in this news release are or will be economically or legally mineable. Further, "inferred mineral resources" have a great amount of uncertainty as to their existence and as to their economic and legal feasibility. It cannot be assumed that any part or all of an inferred mineral resource will ever be upgraded to a higher category.

The mineral reserve and mineral resource data set out in this news release are estimates, and no assurance can be given that the anticipated tonnages and grades will be achieved or that the indicated level of recovery will be realized.

## QUALIFIED PERSON AND TECHNICAL INFORMATION

The technical and scientific information relating to exploration activities disclosed in this document was prepared under the supervision of and verified and reviewed by Marie-France Bugnon, P.Geo., Vice President, Exploration, IAMGOLD. Ms. Bugnon is a "qualified person" (a "QP") as defined by National Instrument 43-101 – Standards of Disclosure for Mineral Projects ("NI 43-101").

Data verification involves data input and review by senior project geologists at site, scheduled weekly and monthly reporting to senior exploration management and the completion of project site visits by senior exploration management to review the status of ongoing project activities and data underlying reported results. All drilling results for exploration projects or supporting resource and reserve estimates referenced in this presentation have been previously reported in news release disclosures either by the Company or the project operator as the case may be (see referenced news releases) and have been prepared in accordance with NI 43-101. The sampling and assay data from drilling programs are monitored through the implementation of a quality assurance - quality control (QA-QC) program designed to follow industry best practice. Drill core (HQ and NQ size) samples are selected by the project geologists and sawn in half with a diamond saw at the project site. Half of the core is typically retained at the site for reference purposes. Generally, sample intervals are 1.0 to 1.5 metres in length and reverse circulation holes are sampled at 1.0 metre intervals at the drill rig. Samples are prepared and analyzed at site for the Company's producing mines and at accredited regional laboratories for the Company's exploration projects, using analysis techniques such as standard fire assay with a 50 gram charge; fire assay with gravimetric finish, or LeachWELL rapid cyanide leach with fire assay with a 50 gram charge.

Lisa Ragsdale, P.Geo (Director, Mining Geology, IAMGOLD Corporation), is the QP responsible for the review and approval of all mineral resource estimates contained herein, as at December 31, 2023. Guy Bourque, Eng. (Director, Mining, IAMGOLD Corporation), is the QP responsible for the review and approval of all mineral reserve estimates contained herein, as at December 31, 2023.

The technical information has been included herein with the consent and prior review of the above noted QPs, who have verified the data disclosed, and data underlying the information or opinions contained herein.

## NON-GAAP FINANCIAL MEASURES

This presentation contains non-GAAP financial measures, including average realized gold price per ounce sold, cash costs, cash costs per ounce sold, AISC, AISC per ounce sold, net cash from operating activities before changes in working capital, mine-site free cash flow, liquidity, net cash (debt), EBITDA, adjusted EBITDA, adjusted net earnings (loss) attributable to equity holders and adjusted net earnings (loss) per share attributable to equity holders, sustaining capital expenditures, expansion capital expenditures, and project expenditures. The non-GAAP financial measures disclosures included in the Company's Q1 2024 MD&A are incorporated by reference in this presentation.

Further details on these non-GAAP financial measures are included on pages 29 to 38 of the Company's Q1 2024 MD&A filed on SEDAR at [www.sedarplus.ca](http://www.sedarplus.ca) and on EDGAR at [www.sec.gov/edgar](http://www.sec.gov/edgar).



# Overview

## BUILDING A LEADING, MODERN CANADIAN-FOCUSED MULTI-ASSET PRODUCER

- **Côté Gold:** Canada's next large-scale mine poured first gold in March 2024, will be a model for modern mining in Canada
- **Essakane:** 6<sup>th</sup> largest gold mine in West Africa, leader in the community averaging ~ 400,000 oz per year over last 5 years
- **Westwood:** Quebec underground success story, generating positive cashflow with a revised technical approach to mine planning
- **Exploration:** Senior-scale exploration portfolio with potential long-term growth: Côté, Gosselin, Nelligan and Chibougamau district
- **Responsibility:** Industry leader with our Zero Harm<sup>®</sup> commitment and focus on safety, firm belief that community partnerships are founded upon relationships that foster trust, transparency and mutual respect

## Q1 2024 OPERATING & FINANCIAL

- Attributable **gold production of 151,000 ounces**
- Average cash cost<sup>1</sup> of \$1,053/oz and AISC<sup>1</sup> of \$1,493/oz
- First gold at Côté Gold and ramp up underway
- 2024 production guidance maintained: **560,000 – 665,000 ounces** (including Côté at 60.3%)
- Liquidity<sup>1</sup> position of **\$693.8 million<sup>2</sup>**, including **\$291.2 million** in cash & equivalents<sup>2</sup>
- Completed \$300 million equity financing on May 24, 2024

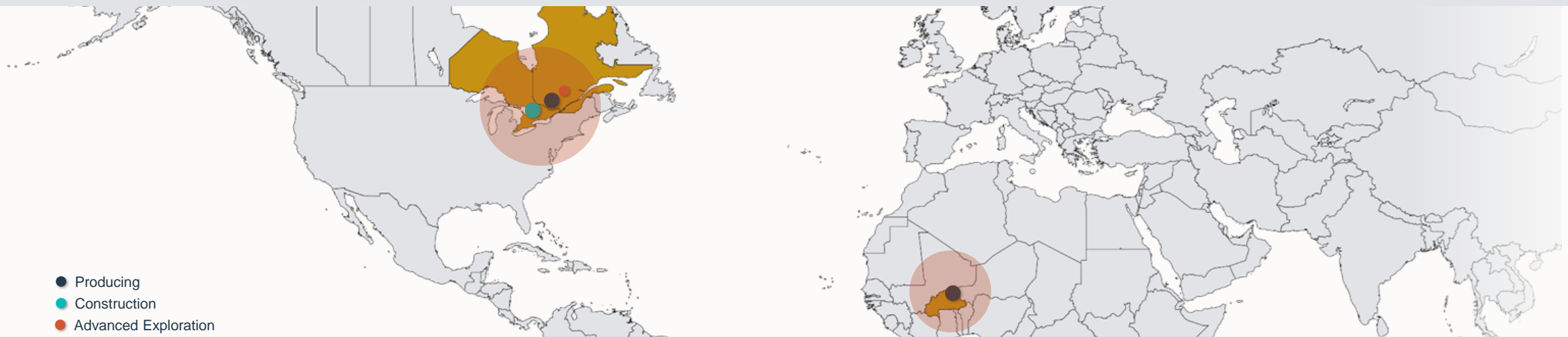
## LOOKING FORWARD

- Target goal for Côté Gold to exit 2024 at 90% throughput
- Prioritize return to 70% interest in Côté<sup>3</sup>
- Generate returns through free cash flow, de-lever balance sheet, deliver value to shareholders and partners
- Exploration program to unlock key districts with long-term potential near existing infrastructure
- Empower, support and collaborate with our communities beyond compliance through engagement, respect and relationship development



# Operations Overview

	START-UP		PRODUCTION	
	CÔTÉ GOLD Ontario, Canada (60% IMG   40% SMM <sup>1</sup> )		ESSAKANE Burkina Faso, West Africa (90%)	WESTWOOD Quebec, Canada (100%)
<b>Start-up</b>	2024		2010	2014
<b>Mine type</b>	Open pit		Open pit	Underground / Satellite OP
<b>Estimated mine life</b>	~2041+		~2028	~2033+ <sup>2</sup>
<b>Life of mine, 100%</b>	365,000 oz \$851/oz AISC		2023 Production, attr. 372,000 oz	2023 Production, attr. 93,000 oz
<b>2024 Guidance, 100%</b>	220,000 – 290,000 oz		2023 Cash costs   AISC \$1,181/oz   \$1,521/oz	2023 Cash costs   AISC \$1,591/oz   \$2,344/oz
			2024 Guidance, attr. 330,000 – 370,000 oz @ \$1,675 – \$1,800/oz AISC	2024 Guidance, attr. 100,000 – 120,000 oz @ \$1,800 – \$2,000/oz AISC



1. Côte Gold is owned as a 60/40 JV between IMG and Sumitomo Metal Mining Co. Ltd. and carries a 7.5% NPI royalty. IMG holds the option to return to 70% ownership which it intends to execute after commercial production. Refer to news release on December 19, 2022  
 2. Subject to underground mine assessment.



# Responsibility & Accountability

## ENVIRONMENTAL

- Released inaugural TCFD report in 2023 outlining roadmap and GHG emission reduction targets
- Targeting net positive biodiversity at all operations
- Adherence and reporting to the TSM Water Stewardship Protocol

## GOVERNANCE & DIVERSITY

- Board diversity with women representing ~44% of directors; average tenure of < 2 years
- Established guidelines on board diversity and renewal in line with best practices
- Sponsor of the Artemis Project, which aims to promote female business owners and entrepreneurs in the mining sector

## SOCIAL/ECONOMIC DEVELOPMENT

- Essakane: contributed \$8.1 million in 2023 to the Mining Fund for Local Development;
- Burkina: Phase II of the Triangle d'Eau Project was approved to upgrade water infrastructure to bring potable water to an additional 75,000 people
- Côte Gold: implementation of socio-economic management and monitoring activities in collaboration with local partners

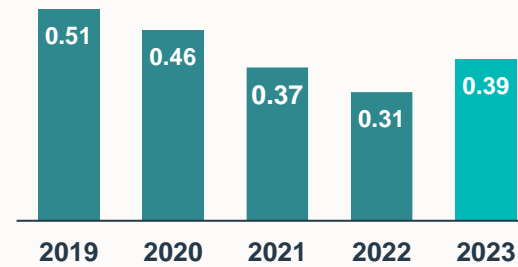
## ACKNOWLEDGEMENTS

- Ranked AA in the MSCI<sup>2</sup> ESG Ratings assessment, placing IAMGOLD among the top 15% of precious metals companies
- Ranked 5<sup>th</sup> out of 52 sector peers by Moody's ESG Solutions
- Named by Corporate Knights to Canada's list of 2022 Best 50 Corporate Citizens, placing 37<sup>th</sup> out of 332 firms

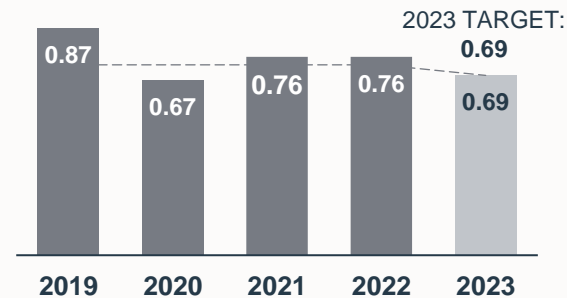


## HEALTH & SAFETY

Days Away, Restricted or Transferred Duty (DART)<sup>1</sup>



Total Recordable Injuries (TRI)<sup>1</sup>





# Q1 2024 Highlights

## CÔTÉ GOLD

**First gold achieved on March 31, 2024**

- On track for goal of achieving commercial production in Q3 2024

## PRODUCTION

**Gold production (attr.) of 151,000 ounces**

- Essakane reported strong Q1 production (attr.) of 118,000 ounces on higher-than-expected grades
- Westwood underground restart and development continues to improve with Q1 production of 32,000 ounces

## OPERATING COSTS (per gold ounce sold, excluding Côte)

Cost of sales<sup>1</sup> of \$1,056

**Cash costs<sup>2</sup> of \$1,053**

**AISC<sup>2</sup> of \$1,493**

Total cost spending inline with budget expectations, yet lower than guidance on a per ounce basis due to impact of higher production and sales volumes

## RESPONSIBILITY & ACCOUNTABILITY

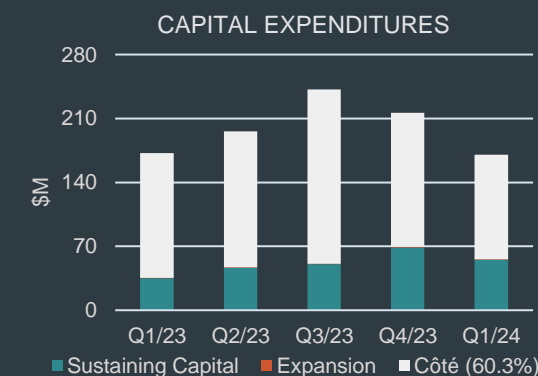
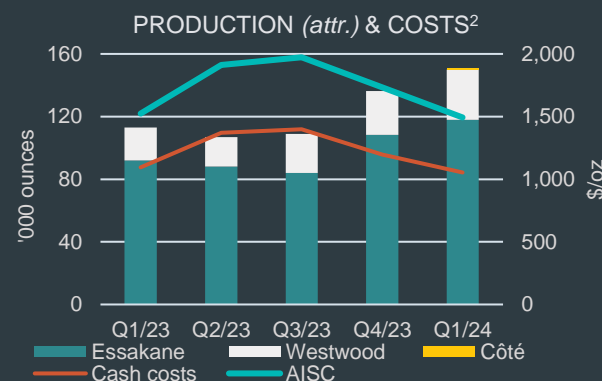
**DARTFR (days away, restricted, transferred duty/200,000 hours) of 0.53**

**TRIFR (total recordable injuries/200,000 hours) of 0.61**

In 2024, the key environmental focus areas for the Company are on **water and biodiversity**. The Company will develop a water stewardship framework and a biodiversity roadmap to support its goal of achieving net positive biodiversity.

## OPERATING RESULTS (continuing ops)

		Q1 2024	Q1 2023	2024 GUIDANCE
Essakane (90%)	koz	118	92	330 – 370
Westwood (100%)	koz	32	21	100 – 120
<b>Subtotal (attr.)</b>	<b>koz</b>	<b>150</b>	<b>113</b>	<b>430 – 490</b>
Côte Gold (60.3%)	koz	1	—	130 – 175
<b>Production (attr.)</b>	<b>koz</b>	<b>151</b>	<b>113</b>	
Gold sales (attr.)	koz	150	109	
Average realized gold price	US\$/oz	\$2,077	\$1,893	
Cash costs <sup>2,3</sup> (attr.)	US\$/oz	\$1,053	\$1,094	\$1,280 – \$1,400
AISC <sup>2,3</sup> (attr.)	US\$/oz	\$1,493	\$1,525	\$1,780 – \$1,940
				<b>CAPEX GUIDANCE<sup>3</sup></b>
Capex <sup>2,4</sup> – sustaining	US\$M	\$55.1	\$35.0	\$215
Capex <sup>2,4</sup> – expansion	US\$M	\$0.5	\$0.5	\$5
Capex <sup>2,4</sup> – Côte (60.3%)	US\$M	\$114.7	\$136.6	Refer to Côte slide



1. Cost of sales, excluding depreciation, is disclosed in the cost of sales note in the consolidated financial statements.  
 2. This is a non-GAAP financial measure. Refer to "Non-GAAP Financial Measures" on slide #3.  
 3. Costs and capital expenditure actuals and guidance is for Essakane and Westwood only (±5%). Refer to Côte Gold section for guidance on capital expenditures this year.  
 4. Capital expenditures represent incurred expenditures for property, plant and equipment and exploration and evaluation assets, and exclude right-of-use assets.



# Financial Results

## LIQUIDITY *(as at March 31, 2024)*

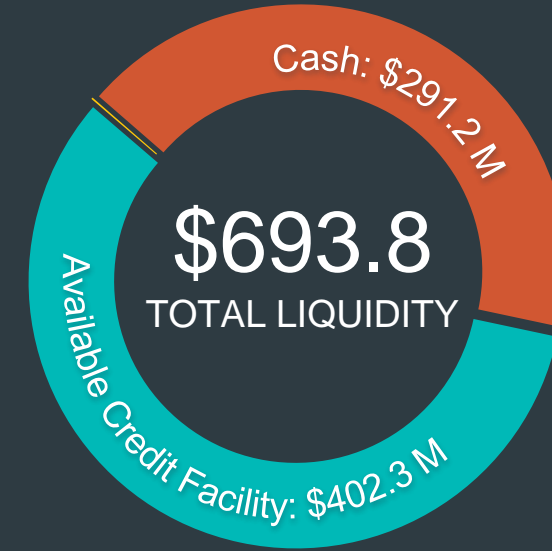
**Cash and equivalents of \$291.2 million and total liquidity<sup>1</sup> of \$693.8 million**

- \$76.4 million of cash and equivalents held by Côte Gold<sub>70%</sub>, \$99.7 million held by Essakane
- Remaining Bambouk transactions expected to close this year for gross proceeds of approximately \$84.4 million

**Credit Facility:** \$425 million secured revolving facility remains available

- \$22.7 million letters of credit issued as collateral or guarantees related to environmental indemnities and supplier payment guarantees

**Financing:** On May 24, 2024, completed equity financing for 72 million shares at \$4.17/sh for gross proceeds of \$300 million to support repurchase of Côte 9.7% interest

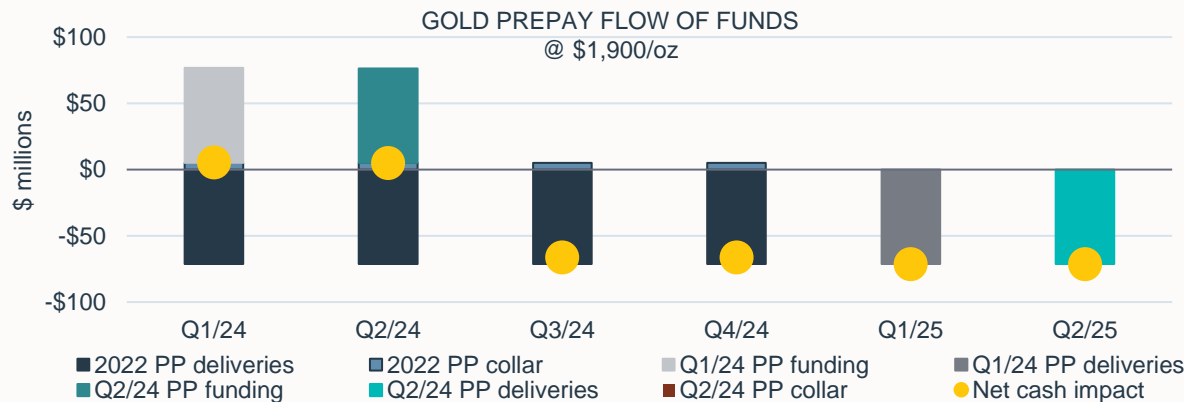


■ Cash ■ Available Credit Facility ■ ST investments

## GOLD PREPAY

**Gold Prepay Agreement<sup>2</sup>:** 150,000 ounces due for delivery from July 2024 to June 2025

- In Dec 2023 & Apr 2024, the Company entered into gold sale prepay arrangements which effectively transitioned cash impact of prior gold delivery obligations (2022 Prepay Arrangements) out of Q1 + Q2 2024 into Q1 + Q2 2025.



## LONG-TERM DEBT

(\$ millions)	Mar 31 2024	Dec 31 2023
Credit Facility	\$ -	\$ -
5.75% senior notes*	448.1	448.0
Term Loan†	367.7	375.6
Equipment loans	5.1	7.2
Long-term debt	\$820.9	\$830.8
Leases (cont. ops)**	129.5	121.3
Long-term debt + Leases	\$950.4	\$952.1

\* 5.75% senior notes mature on October 15, 2028 (Fitch: B-, Moody's: Caa2, S&P: B-)

\*\* Lease balances includes Cote CAT leases at 70% and other leases at 100%

† Term loan figure is balance sheet (IFRS) value not face value

1. This is a non-GAAP financial measure. Refer to "Non-GAAP Financial Measures" on slide #3.

2. Refer to news releases on April 4, 2024 and December 18, 2023. 2022 Prepay Arrangements delivered monthly in 2024 have an average forward contract pre-funded price of \$1,753/oz on 50,000 oz and an outstanding collar range of \$1,700 to \$2,100/oz on 100,000 oz. The 2024 Q1 and 2024 Q2 Prepay Arrangements transitioned a total of 75,000 ounces of gold delivery obligations out of the first and second quarters of 2024 into the following year.

# Financial Results

## Q1 FINANCIAL REVIEW

**Gold revenues of \$338.9 million** from sales of 163,000 ounces (150,000 ounces attributable) at realized average price of \$2,077/oz

**Adj. EBITDA<sup>1</sup> of \$152.5 million**

**Adj. net earnings<sup>1</sup> of \$53.0 million or \$0.11 per share** attributable to equity holders

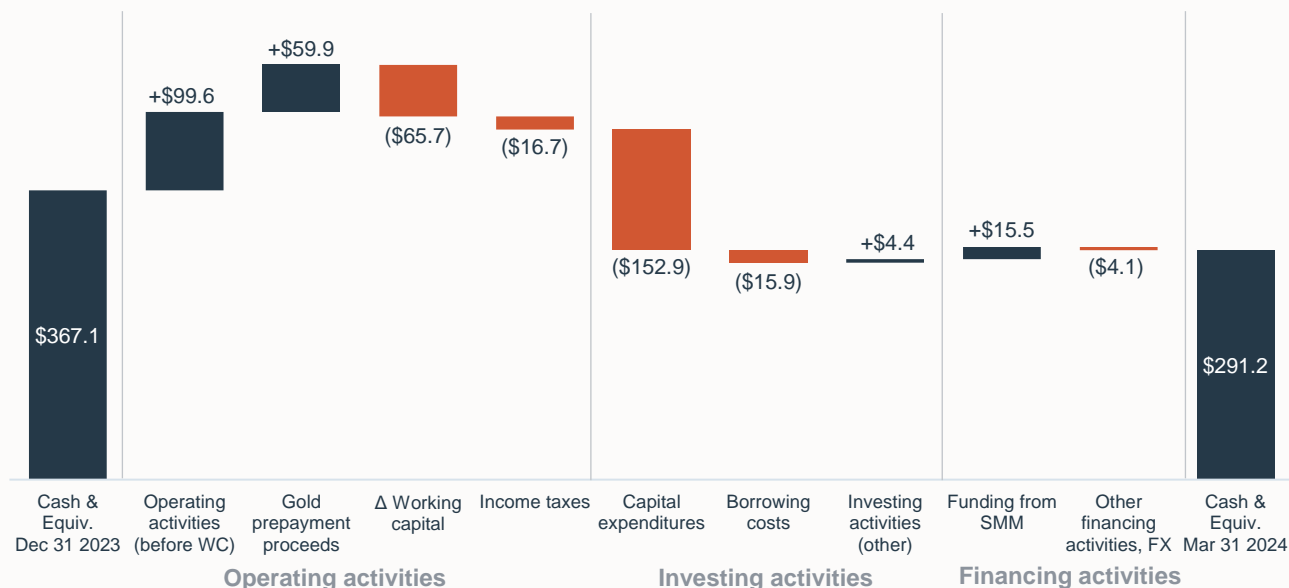
**Operating cash flow** (before changes in working capital)<sup>1</sup> of \$142.8 million

- Includes \$59.9 million in gold prepayment proceeds for Q1 prepay funding arrangement

**Mine-site free cash flow<sup>1</sup> of \$46.2 million**

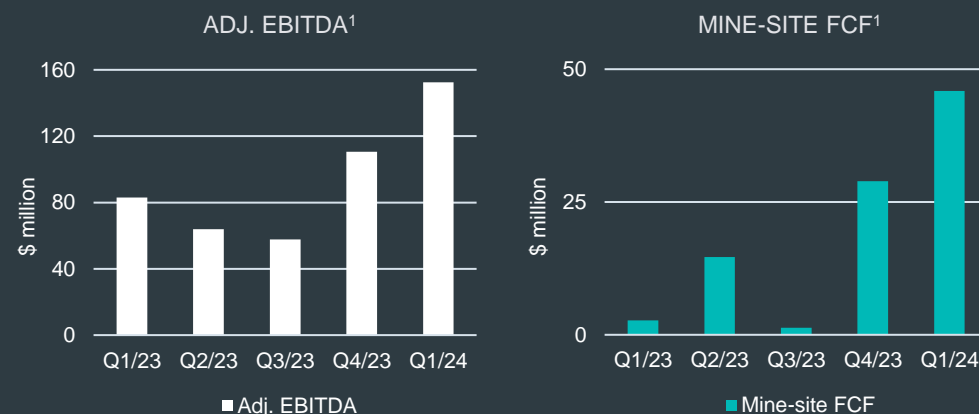
- Essakane: \$35.7 million | Westwood: \$10.5 million

## CASH FLOW RECONCILIATION



## FINANCIAL HIGHLIGHTS – continuing operations

(In \$ millions, unless otherwise stated)	Q1 2024	Q1 2023
Revenues	\$338.9	\$226.2
Gross profit	\$105.7	\$43.1
EBITDA <sup>1</sup>	\$154.1	\$68.4
Adj. EBITDA <sup>1</sup>	\$152.5	\$83.0
Net earnings (loss) to equity	\$54.8	\$6.3
Adj. net earnings (loss) to equity <sup>1</sup>	\$53.0	\$24.9
Net earnings (loss) – \$/sh equity	\$0.11	\$0.01
Adj. EPS – \$/sh equity <sup>1</sup>	\$0.11	\$0.05
Net cash from operating activities (ex-WC) <sup>1</sup>	\$142.8	\$55.7
Net cash from operating activities	\$77.1	\$13.4
Mine-site free cash flow <sup>1</sup>	\$46.2	\$2.7
	Mar 31 2024	Dec 31 2023
Cash and cash equivalents	\$291.2	\$367.1
Available Credit Facility	\$402.3	\$387.0





# Côte Gold





# Côté Gold

## OPERATIONS

**Côté Gold achieved first gold on March 31, 2024**

### Total tonnes mined of 7.6M tonnes in Q1

- Autonomous trucks achieved daily hauling record of 160,000 tpd in April
- Mining costs averaged \$3.32 per tonne** in Q1 with improvements expected as tonnages increase and mining optimizations are employed
- Mining rate improvements with two CAT 6060 hydraulic shovels now in operation and double-side loading

**Processing plant ramp-up progressing well** with crushing, HPGR and processing circuits performing as designed

- Plant circuits achieve 1,600 tonnes per hour when online, equivalent to >95% of design capacity
- Priority to increase plant availability and stability

**Head grades of 0.81 g/t** as lower grade material used for commissioning and start-up

## CAPITAL EXPENDITURES (100%)

### Construction project expenditures of \$151.7M in Q1

- Construction essentially complete
- \$67M in project expenditures remain for support facilities/infrastructure
- Total construction capital for Côté (incl. support facilities): \$3.0 B

**Capitalized operating expenditures of \$27.0M** related to commissioning and ramp-up

### Capital expenditures for operations of \$17.6M

- Capitalized waste stripping: \$8.1M
- Tailings and earthworks: \$8.0M
- Other projects: \$1.5M

(100% basis, unless otherwise stated)

Q1 2024

Ore mined	kt	1,944
Grade mined	g/t	0.72
Material mined – total	kt	7,597
Strip ratio	w:o	2.9
Ore milled	kt	48
Head grade	g/t	0.81
Recovery	%	80%
<b>Production – 100%</b>	<b>koz</b>	<b>1</b>
Project capital expenditures <sup>1</sup>	\$M	\$151.7
Capital expenditures <sup>1</sup> related to operations	\$M	\$44.6
Cash costs <sup>1</sup>	\$/oz	NA
All-in sustaining costs <sup>1</sup>	\$/oz	NA





# Côte Gold: 2024 Outlook

## RAMP UP TO COMMERCIAL PRODUCTION

Commercial production on track for Q3 2024 with the goal to achieve **90% throughput rate** exiting 2024

**2024 PRODUCTION (100%)**  
**220,000 – 290,000 oz**

**CASH COSTS<sup>1</sup> @ YEAR END**  
**\$700 – \$800/oz**  
**AISC<sup>1</sup> @ YEAR END**  
**\$1,100 – \$1,200/oz**

## RETURN TO 70% INTEREST

Company intends to **repurchase 9.7% in Côte** from Sumitomo on **Nov 30, 2024** to return to the full 70% interest with proceeds from May financing, cashflow and available liquidity<sup>2</sup>

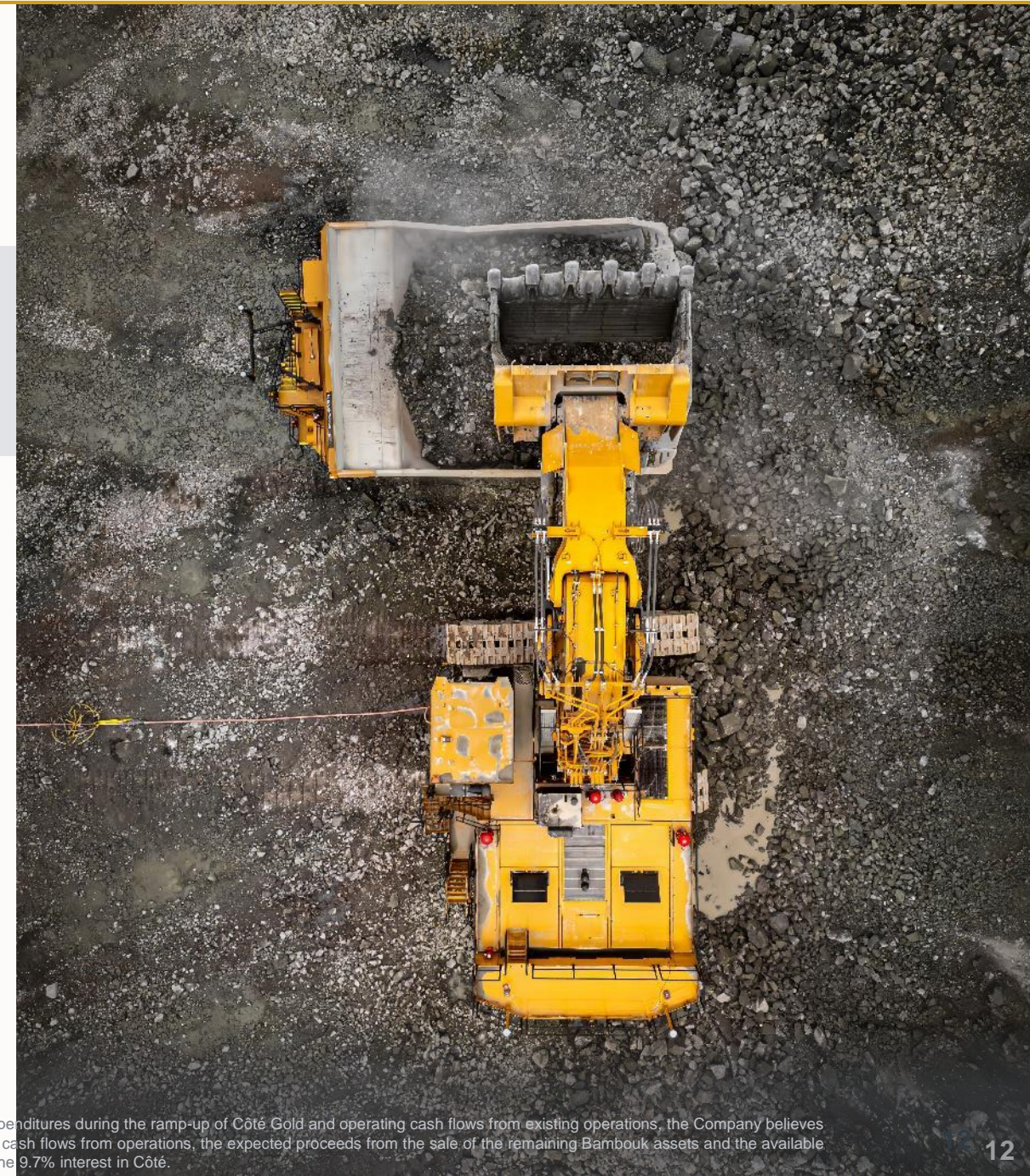
## CAPITAL EXPENDITURES

Timing of construction project expenditures updated following first gold. No change to total capital expenditure guidance for the year

<b>2024 CAPITAL EXPENDITURES (100%)</b> <b>±5%</b>	<b>Q1/24</b>	<b>Updated Guidance</b>
<b>Construction capital to first gold</b>	\$151.7M	✓ <b>\$152M</b>
<b>Construction capital post first gold</b>	–	<b>\$67M</b>
<b>Capital expenditures related to operations</b>	\$9.5M	<b>\$145M</b>
<b>Capitalized opex during commissioning &amp; ramp-up</b>	\$27.0M	<b>\$40M</b>
<b>Capitalized Waste Stripping</b>	\$8.1M	<b>\$50M</b>

1. This is a non-GAAP financial measure. Refer to "Non-GAAP Financial Measures" on slide #3.

2. Based on the current ramp-up schedule of Côte as well as prevailing market conditions which could impact expenditures during the ramp-up of Côte Gold and operating cash flows from existing operations, the Company believes that the net proceeds of the financing, combined with cash and cash equivalents at March 31, 2024, expected cash flows from operations, the expected proceeds from the sale of the remaining Bambouk assets and the available liquidity provided by the undrawn amounts under the credit facility, will be sufficient to fund the repurchase of the 9.7% interest in Côte.





# Côté & Gosselin

Current diamond drill program of 35,000 m targeting potential connecting extensions of breccias between Côté and Gosselin pits and testing continuity at depth beneath mineralized envelope

- 2021 maiden resource: 54,775 m drill data, YE2023 updated resource: 35,000 m drill data

Gosselin remains open along strike and at depth

Technical studies planned to advance metallurgical testing, conduct mining and infrastructure studies to review alternatives for potential inclusion of Gosselin into a future Côté Gold Mine LOM plan

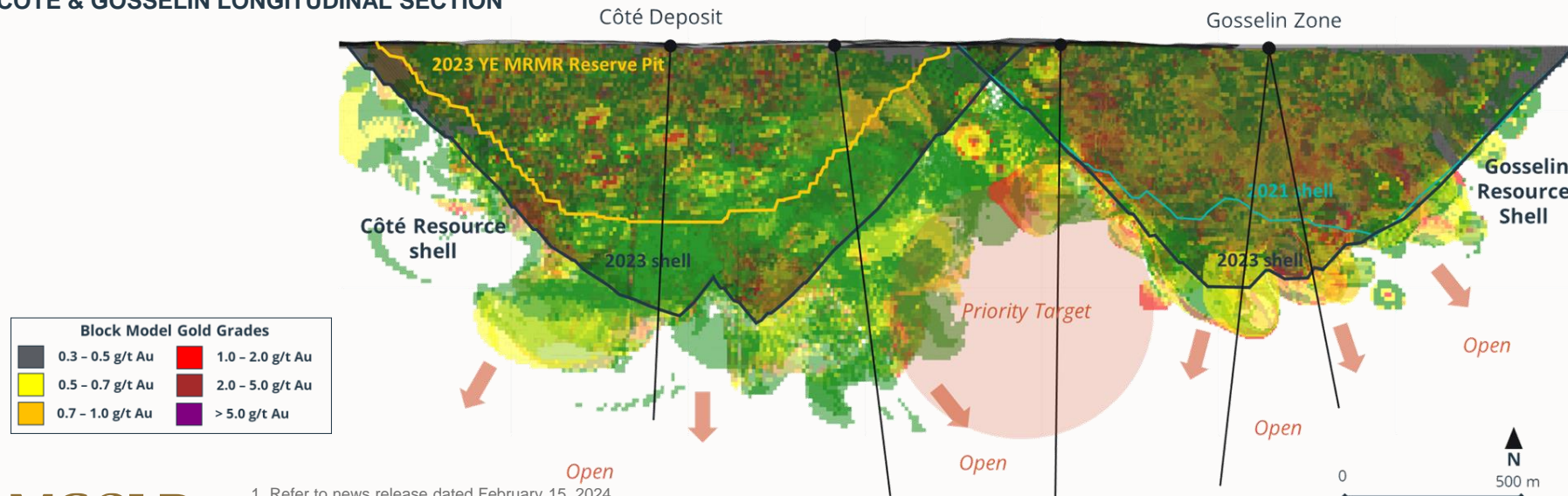
Côté Gold mine plan<sup>2</sup> based on 7.6 million ounces in Mineral Reserves

Total global Côté Gold Measured & Indicated Resources estimated at 16.5 million ounces and Inferred Mineral Resources estimated at 4.2 million ounces

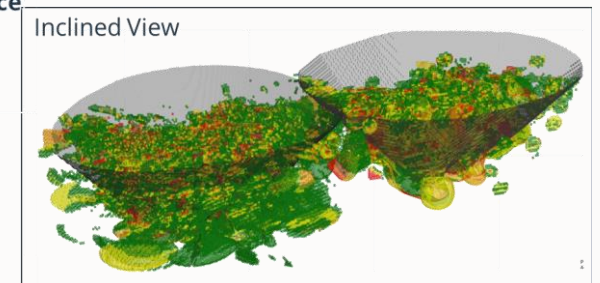
## CÔTÉ GOLD PROJECT – MINERAL RESERVES & RESOURCES (2023)<sup>1,3</sup>

Classification	Tonnes (millions)	Grade (g/t Au)	Contained (100%) (Moz Au)	Attributable Contained (Moz Au)
<b>Côté Gold Deposit</b>				
P&P Reserves	234.6	1.01	7.61	4.59
M&I Resources (incl.) <sup>3</sup>	444.8	0.84	12.07	7.28
Inferred	60.6	0.61	1.18	0.71
<b>Gosselin Deposit</b>				
Indicated	161.3	0.85	4.42	2.67
Inferred	123.9	0.75	2.98	1.80
<b>Côté Gold – Total</b>				
P&P Reserves	234.6	1.01	7.61	4.59
M&I Resources (incl.) <sup>3</sup>	606.1	0.85	16.49	9.95
Inferred	184.5	0.70	4.16	2.51

### CÔTÉ & GOSSELIN LONGITUDINAL SECTION



**35,000m**  
drill hole program planned for  
Gosselin in 2024



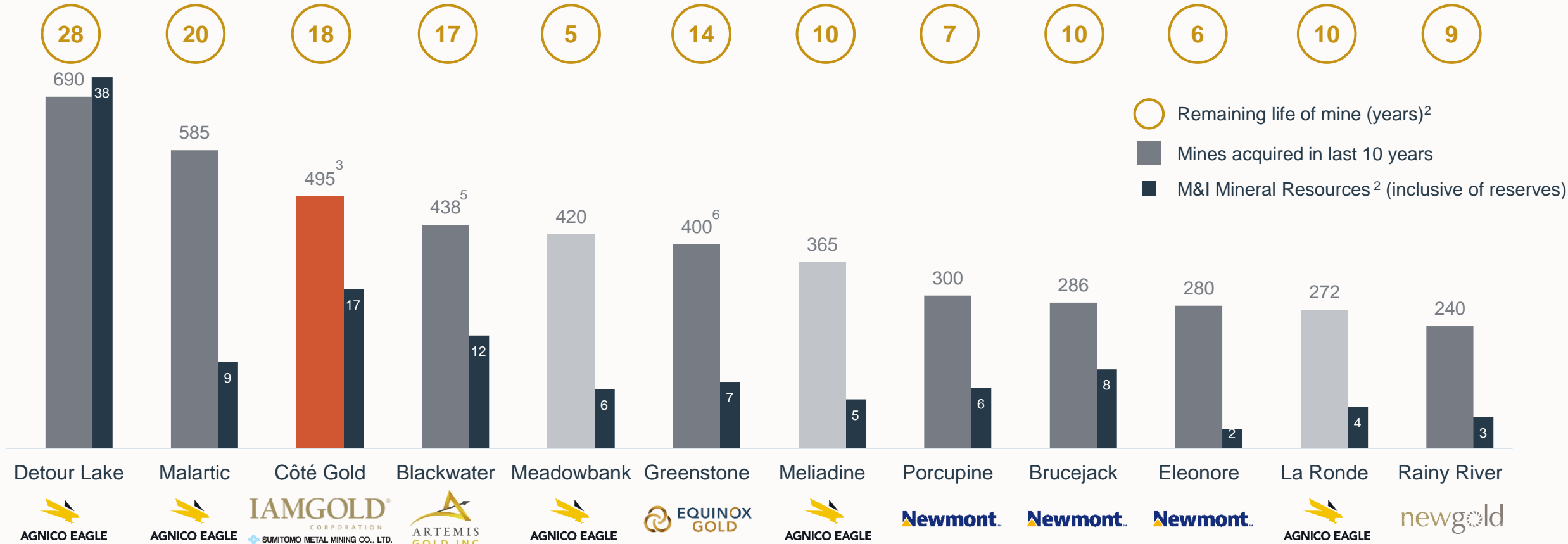
1. Refer to news release dated February 15, 2024  
 2. Refer to IAMGOLD news release date August 3, 2022.  
 3. M&I resources inclusive of mineral reserves.



# Côte Gold: Large-Scale and Long-Life Mine

## Top 12 Gold Mines in Canada by Production<sup>1</sup>

(koz)



Acquired 2019: C\$4.9B  
 Acquired 2014: C\$3.5B  
 Acquired 50% in 2022: C\$2.6B<sup>4</sup>

Acquired 2021: \$2.8B

1. Based on 2023E production guidance. | 2. Mine life and Mineral Resources as per stated mine life per company disclosure or technical reports where available, otherwise mine life calculated as reserves divided by 2023E production. | 3. Production at 100% on years 1-6 average based on Côte August 12, 2022 NI 43-101 Technical Report. M&I Resources include Gosselin | 4. Analyst consensus estimates for Malartic portion of transaction. | 5. Production and mine life based on February 21, 2024 news release | 6. Production at 100% on years 1-5 average based on 2020 feasibility study.



# Essakane Gold Mine, Burkina Faso





# Essakane

## Q1 2024 OPERATIONAL REVIEW

**Attributable production of 118,000 ounces in Q1 is a new quarterly record**

**Total tonnes mined in Q1 of 11.3M tonnes** as mining fleet operated near full capacity in the quarter

**Head grades of 1.52 g/t** on positive grade reconciliation as mining moves into deeper benches of Phase 5

- Grades expected to return to reserve grade levels as per the mine plan over the year as mining activities transition into the next phases of the pit

**Cash costs<sup>1</sup> of \$1,002/oz**

- Total production costs inline with prior quarter and budget, decline in unit cash costs on higher sales volumes
- Costs remain elevated for landed cost of fuel and fuel substitution due to the impact of the security situation on the supply chain, inflation, royalties and higher labour costs due to the appreciation in the local currency

**AISC<sup>1</sup> of \$1,312/oz**

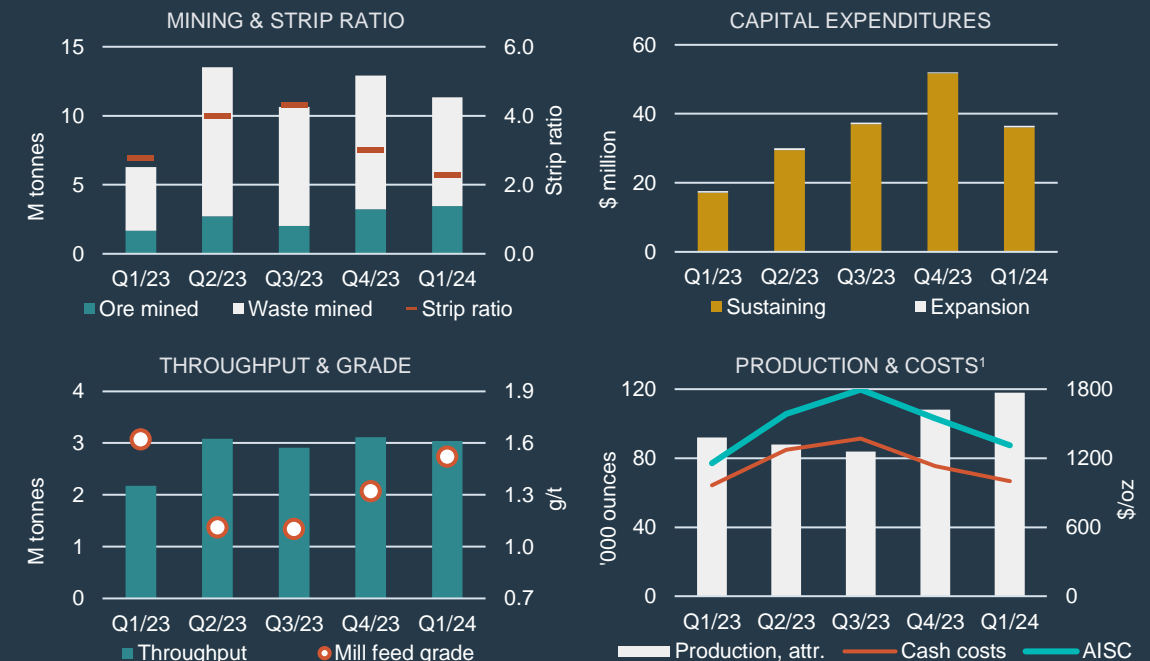
**Security situation** in Burkina Faso and immediate region continues to apply pressure to in-country supply chain and operations

## 2024 OUTLOOK (UNCHANGED)

<b>Production</b>	oz	330,000 – 370,000
<b>Cash costs</b>	\$/oz	\$1,300 – \$1,400
<b>AISC</b>	\$/oz	\$1,675 – \$1,800
<b>Sustaining capital</b>	\$M	\$150 (±5%)
<b>Expansion capital</b>	\$M	\$5 (±5%)

(100% basis, unless otherwise stated)

		Q1 2024	Q1 2023
Ore mined	kt	3,458	1,657
Material mined – total	kt	11,340	6,285
Strip ratio	w:o	2.3	2.8
Ore milled	kt	3,039	2,175
Head grade	g/t	1.52	1.62
Recovery	%	89%	91%
<b>Production – attributable 90%</b>	<b>koz</b>	<b>118</b>	<b>92</b>
Sustaining capital expenditures <sup>1</sup>	\$M	\$36.0	\$17.1
Expansion capital expenditures <sup>1</sup>	\$M	\$0.5	\$0.5
Cash costs <sup>1</sup>	\$/oz	\$1,002	\$964
All-in sustaining costs <sup>1</sup>	\$/oz	\$1,312	\$1,157



# Essakane

## CURRENT MINE PLAN<sup>1</sup>

### Mine life extension to 2028

- Mining will occur from three remaining pit phases in the Essakane Main Zone ("EMZ") pit, and the Lao and Gourouol satellite pits

LOM production of 2 million ounces from 2024 to 2028

Annual average gold production (100%) of approximately 400,300 oz

Average estimated operating costs over the LOM (2024-2028) \$31.11/t milled net of capitalized waste stripping ("CWS") (excluding CWS and stockpile movements, with CWS being transferred to sustaining capital)

Capital expenditures over LOM of \$502.7 million (including 2023)

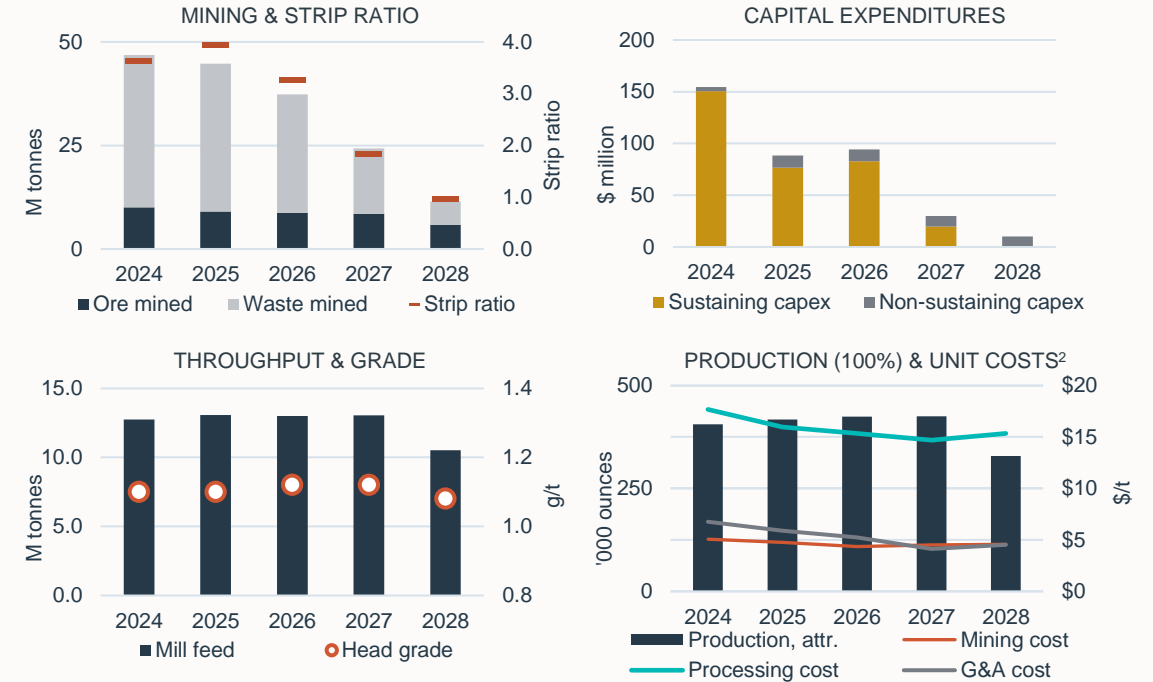
## MINERAL RESERVE & RESOURCE ESTIMATE

Probable Mineral Reserve estimate (open pit) of 1.8 million ounces at an average grade of 1.32 g/t, an increase of 12% from year end 2022

Mineral Resource estimate of 3.4 million ounces, including stockpiles, at an average grade of 1.21 g/t, up 19% from year end 2022

Category <i>(as of Dec 31, 2023)</i>	Tonnes (000's)	Grade (g/t)	Ounces (000's)
<b>Reserves</b>			
Proven (stockpile)	20,047	0.65	417
Probable (open pit)	42,123	1.32	1,787
<b>Resources<sup>3</sup></b>			
Measured + Indicated	87,081	1.21	3,390
Inferred	8,344	1.46	392

## UPDATED MINE PLAN<sup>1</sup>





# Westwood Complex, Canada





# Westwood Complex

## Q1 2024 OPERATIONAL REVIEW

**Gold production of 32,000 ounces** on higher grades and increase in mining rates from underground

**Underground mining of 83,000 tonnes in Q1** with head grades of 8.78 g/t

- Highest underground volume since restart, highest head grades from underground in > 5 years

**Open pit mining contributed 120,000 tonnes** with head grades of 2.21 g/t

- Mill feed from the higher grade Fayolle open pit to be replaced with lower grade material from Grand Duc in the second half of the year

**Mill throughput of 249,000 tonnes** at blended head grade of 4.27 g/t

**Cash costs<sup>1</sup> of \$1,236/oz** and **AISC<sup>1</sup> of \$1,836/oz** on higher production and sales

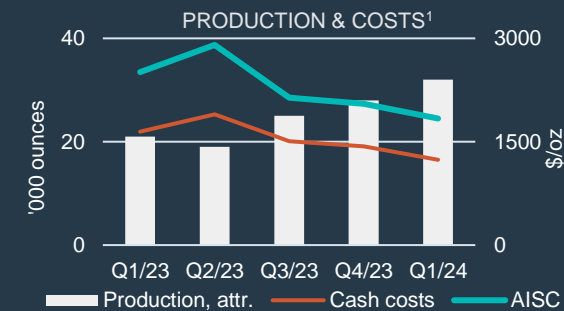
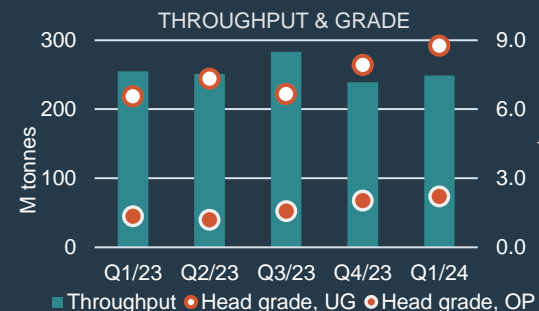
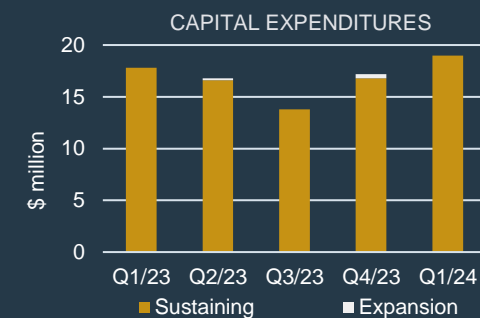
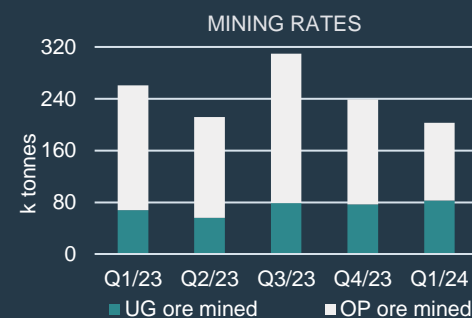
**Mine site free cash flow of \$10.5 million** as improvements at Westwood take hold during strong gold price environment

## 2024 OUTLOOK (UNCHANGED)

<b>Production</b>	Oz	100,000 – 120,000
<b>Cash costs</b>	\$/oz	\$1,250 – \$1,375
<b>AISC</b>	\$/oz	\$1,800 – \$2,000
<b>Sustaining capital</b>	\$M	\$65 (±5%)
<b>Expansion capital</b>	\$M	\$0

(100% basis, unless otherwise stated)

		Q1 2024	Q1 2023
Underground lateral development	metres	1,307	1,494
Ore mined – underground	kt	83	68
Ore mined – other sources	kt	120	193
Ore milled	kt	249	255
Head grade – underground	g/t	8.78	6.56
Head grade – other sources	g/t	2.21	1.34
Head grade – total	g/t	4.27	2.77
Recovery	%	94%	92%
<b>Production – 100%</b>	<b>koz</b>	<b>32</b>	<b>21</b>
Sustaining capital expenditures <sup>1</sup>	\$M	\$19.0	\$17.8
Expansion capital expenditures <sup>1</sup>	\$M	—	—
Cash costs <sup>1</sup>	\$/oz	\$1,236	\$1,646
All-in sustaining costs <sup>1</sup>	\$/oz	\$1,836	\$2,508



1. This is a non-GAAP financial measure. Refer to "Non-GAAP Financial Measures" on slide #3.



# Westwood Complex

## UNDERGROUND DEVELOPMENT & REHABILITATION

**Underground lateral development of 1,307 m in Q1 2024 and 5,271 m in 2023**

- Securing safe access to multiple ore faces at different levels in the mine, increasing operational flexibility to allow simultaneous exploitation of multiple stope sequences in line with the 2023/2024 production plan

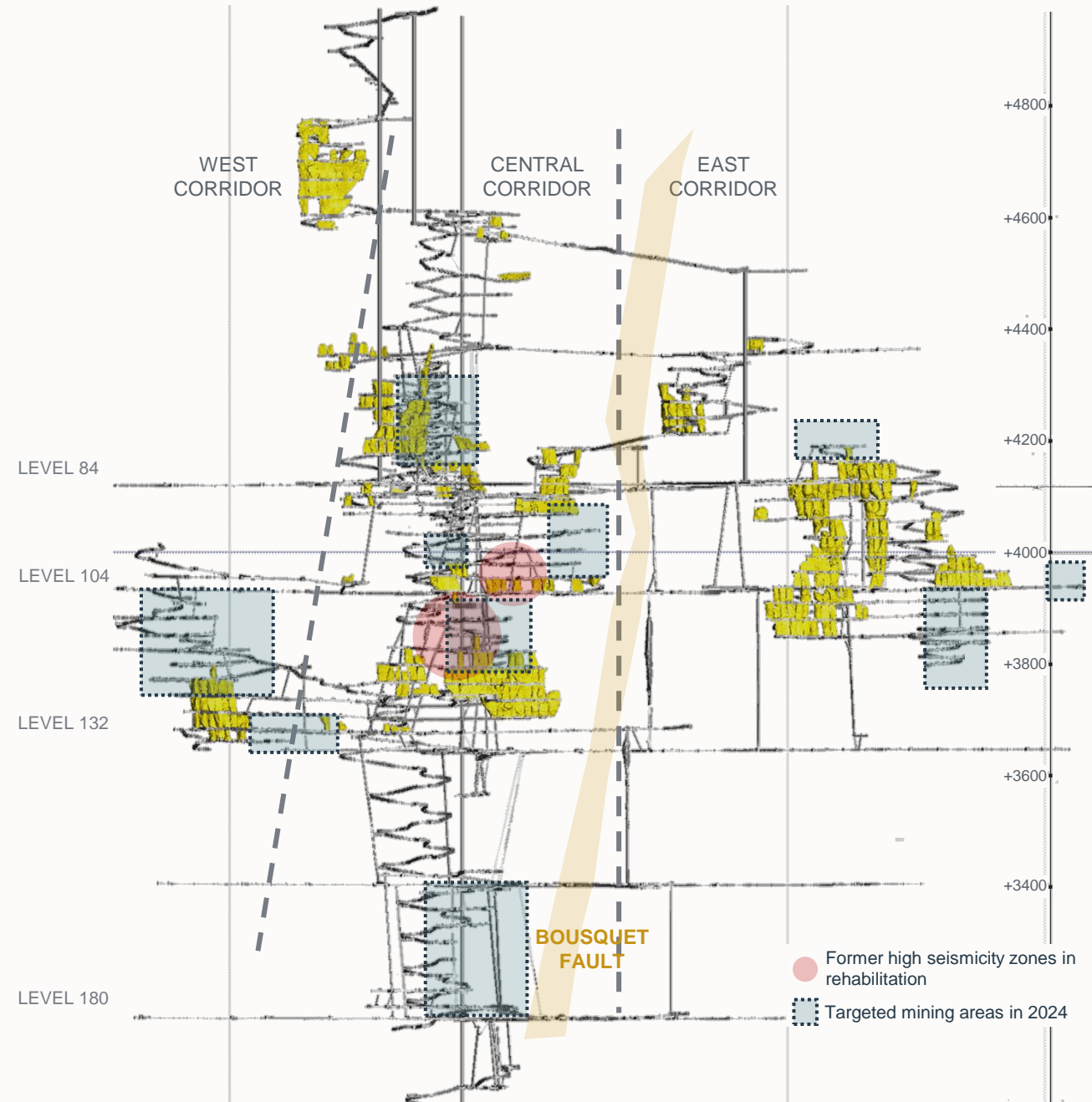
**A focus on rehabilitation with 6,323 m in 2023** has allowed for increased development rates and access to previously closed stopes

**Revised mining method to incorporate pillarless pyramid stope sequencing** versus primary/secondary

## MINERAL RESERVE & RESOURCE ESTIMATE

**Mineral Reserve estimate<sup>1</sup> (underground) of 1.1 million ounces** at an average grade of **10.62 g/t**, an increase of 123% from year end 2022

Category <i>(as of Dec 31, 2023)</i>	Tonnes (000's)	Grade (g/t)	Ounces (000's)
<b>Reserves</b>			
Proven & Probable (underground)	3,364	10.62	1,149
Proven & Probable (Grand Duc)	<u>1,925</u>	<u>1.05</u>	<u>65</u>
Total P&P	5,289	7.14	1,214
<b>Resources<sup>2</sup></b>			
Measured + Indicated	8,415	8.96	2,425
Inferred	1,465	15.78	743





# Exploration Projects





# Chibougamau: Emerging District

## NELLIGAN (100%<sup>1</sup> JV INTEREST)

- Located 60 kilometres southwest of Chibougamau, Québec
- Updated resource estimate<sup>2</sup>(on 100% basis):

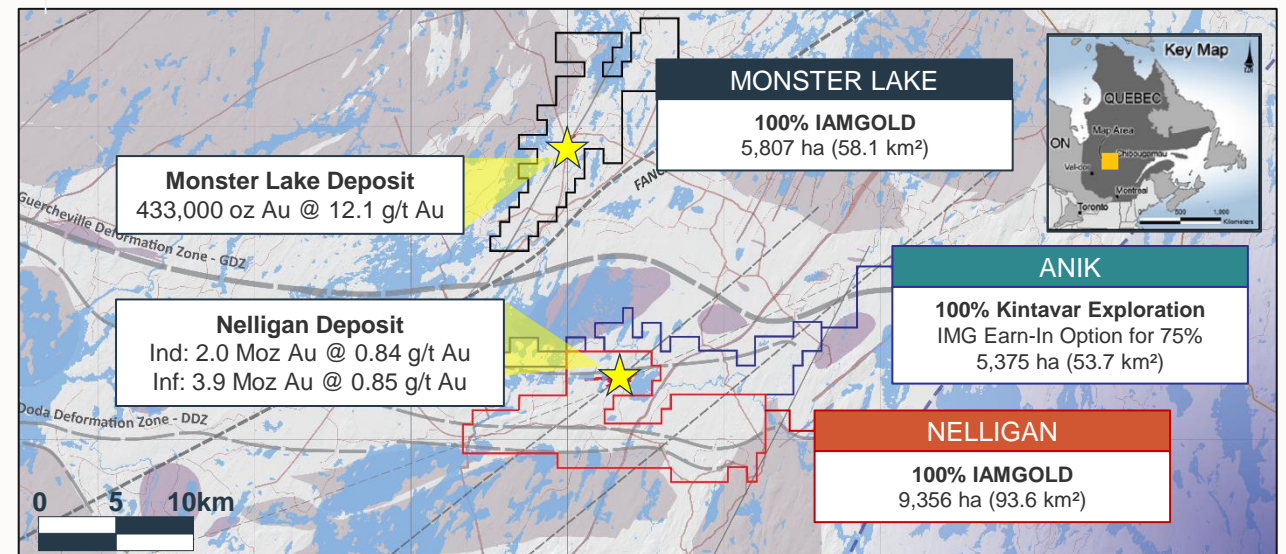
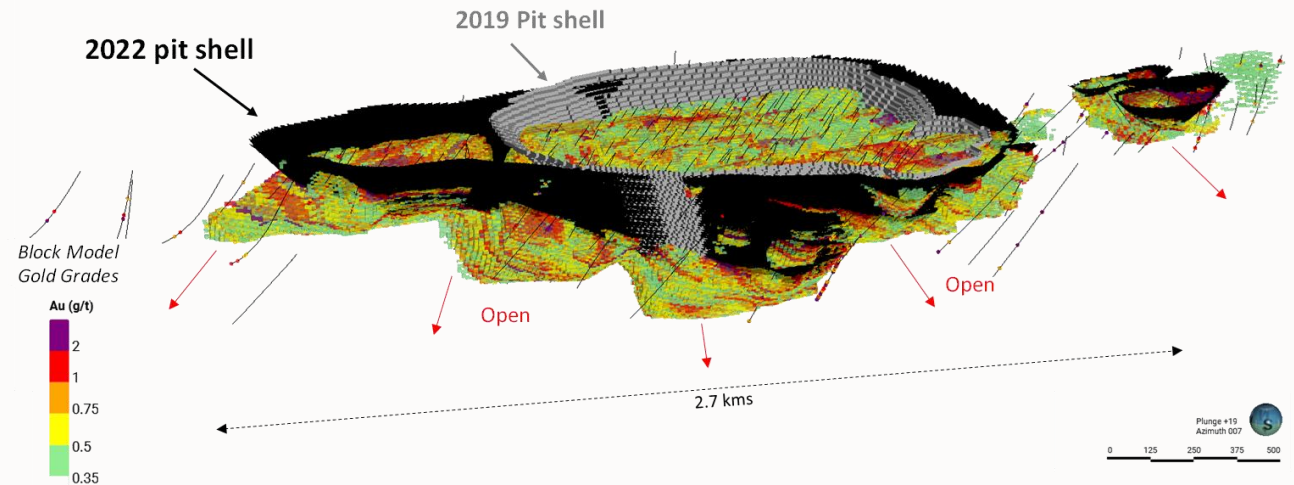
Category	Cut-off		Grade (g/t Au)	Contained Au (koz Au)
	Grade (g/t Au)	Tonnage (Mt)		
Indicated	0.35	74.5	0.84	2,006
Inferred	0.35	142.6	0.85	3,889

- 16,000 m drill program planned for 2024
- Awarded **2019 AEMQ Discovery of the Year**

## MONSTER LAKE (100% INTEREST)

- 15 kilometres north of Nelligan
- Consolidated 100% ownership in 2020
- Hosts an inferred resource of 1.1 million tonnes grading 12.1 g/t for 433,000 oz<sup>3</sup>
- 2020 drilling highlights<sup>4</sup>:
  - 3.8 metres @ 16.9 g/t Au
  - 2.8 metres @ 5.63 g/t Au
  - 12.3 metres @ 2.09 g/t Au

Nelligan 2022 Resource Pit Shell



1. On December 5, 2023 the company announced a definitive arrangement to acquire Vanstar Mining Resources, which held 25% of Nelligan. The transaction is expected to close in Q1 2024.  
 2. Refer to news release dated January 12, 2023  
 3. On a 100% basis. Refer to news release dated February 17, 2021.  
 4. Refer to news release dated August 13, 2020.



# IAMGOLD

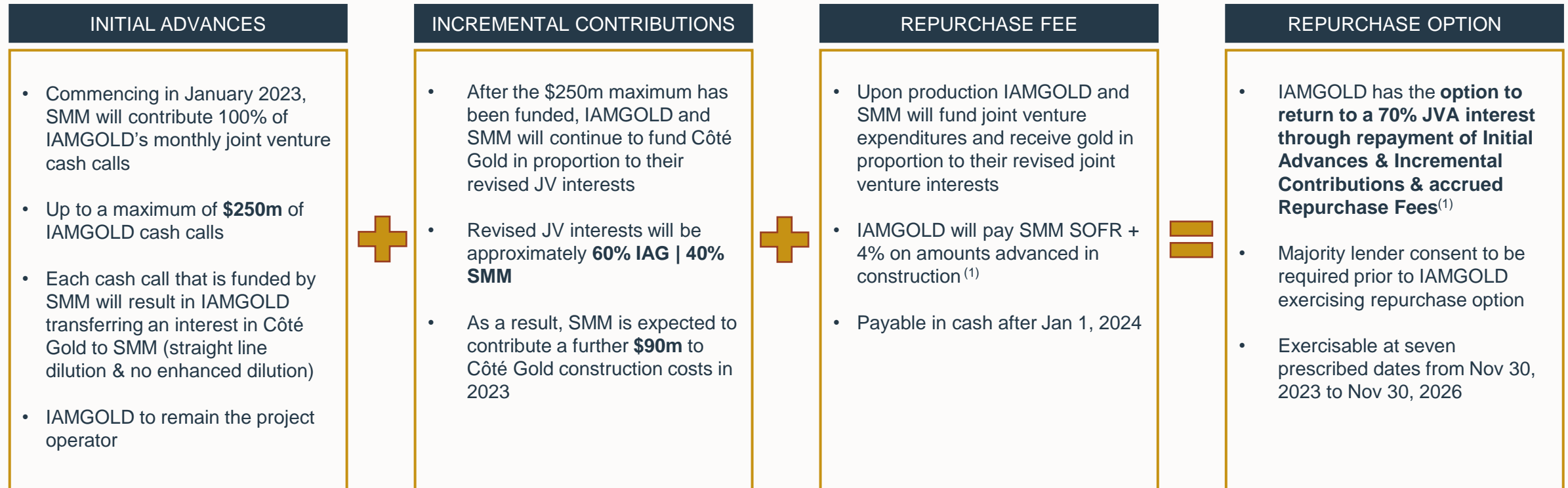




# Appendix

# Sumitomo Agreement: Funding with an Option to Repurchase

The financing provided by SMM demonstrates strong validation of Côté from our partner



Both partners aligned & intend to return to a 70% | 30% ownership interest

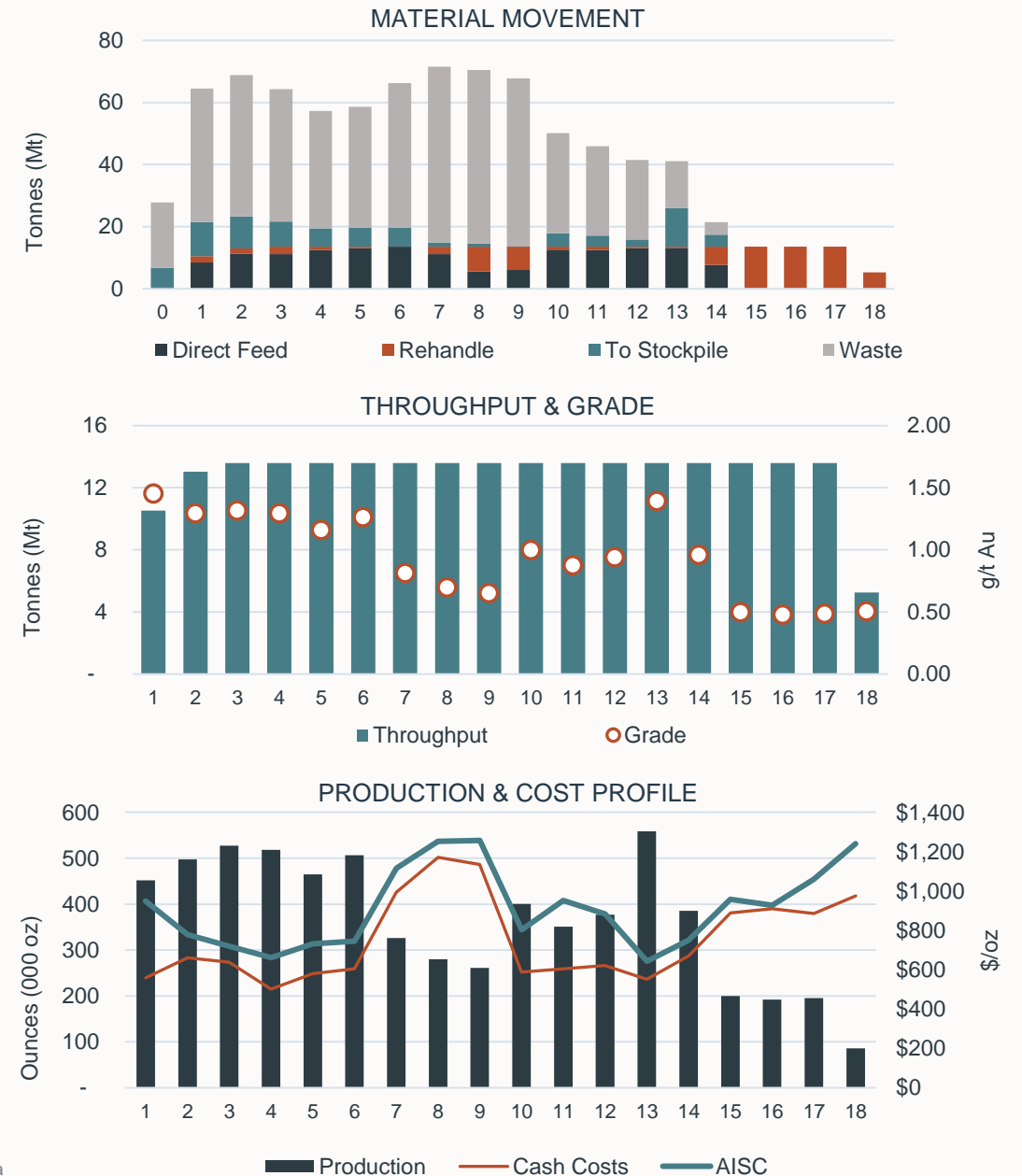


# Côte Gold: 43-101 Mine Plan Overview

Operations		@ 100% <sup>1</sup>
Mine Life	years	18
Total Ore Tonnes Mined	kt	236,000
Strip ratio	w:o	2.4
Total Ore Processed	kt	233,000
Processing throughput rate	tpd	37,200
Gold Grade, Processed	g/t Au	0.96
Recovery Rate	%	91.8
Recovered Gold	oz	6,578,000
<b>Average Annual Gold Production</b>	<b>oz</b>	<b>365,000</b>
<b>Avg. Gold Production (Years 1 – 6)</b>	<b>oz</b>	<b>495,000</b>

Unit Operating Costs		
Mining (gross cost incl. CWS)	\$/t mined	\$2.62
Mining (net cost excl. CWS)	\$/t processed	\$6.20
Processing	\$/t processed	\$7.97
G&A	\$/t processed	\$3.31
On-site operating cost	\$/t processed	\$17.48
Total operating cost (incl. off-site)	\$/t processed	\$19.56

Operating Costs		
Cash costs <sup>2</sup>	\$/oz Au	\$699
AISC <sup>2</sup>	\$/oz Au	\$851



# Côte Gold: Review of 43-101 Costs

## 2024 unit costs expected to be elevated above average 43-101 cost estimate

- due to inflation experienced in the industry and fixed costs being absorbed by fewer tonnes and ounces during commissioning and ramp up
- Majority of supply chain contracts in place for start-up improves visibility into short-term operating inputs

### MINING COSTS

- **\$2.62/t material mined** (avg. over LOM) in 43-101
- Price changes for consumables since 43-101 include:
  - Explosives: +116%
  - Tires: +41%
  - Diesel: +3%



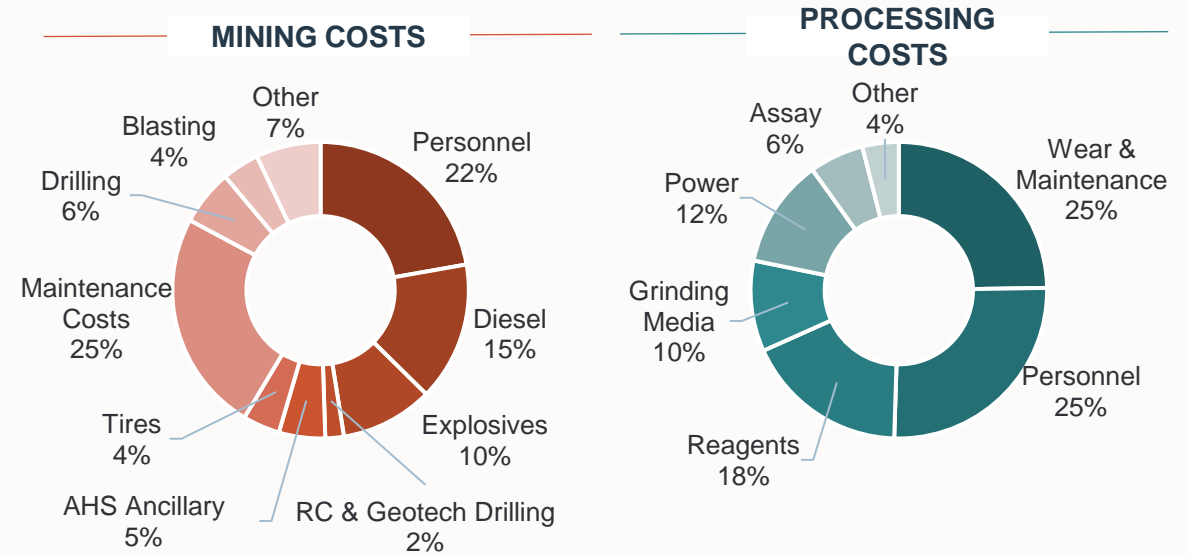
### PROCESSING COSTS

- **\$7.97/t processed ore** (avg. over LOM) in 43-101
- Price changes for consumables since 43-101 include:
  - Reagents: +14%
  - Mill balls: +16%
  - Cyanide: +45%
  - SO2: +21%
  - Lime: -22%
  - HCl: +63%
  - Caustic Soda: -26%
  - Electricity: -39% in 2024



### G&A COSTS

- **\$3.31/t process ore** (avg. over LOM) in 43-101
- G&A cost expected to be higher by 10% due to impact of catering and other services to operate and maintain the camp and site



### 43-101 OPERATING & UNIT COSTS

	LOM \$M	\$/tonne material	\$/tonne processed	\$/oz sold
Mining (gross costs incl. CWS) <sup>1</sup>		\$2.62		
Mining (net cost excl. CWS) <sup>2</sup>	\$1,445		\$6.20	\$220
Processing	\$1,856		\$7.97	\$282
G&A	\$772		\$3.31	\$117
<b>Subtotal</b>	<b>\$4,073</b>		<b>\$17.48</b>	<b>\$619</b>
Royalties + Offsite costs	\$485		\$2.08	\$74
<b>Total cash costs</b>	<b>\$4,558</b>		<b>\$19.56</b>	<b>\$693</b>
Sustaining Capital	\$518		\$2.22	\$79
Capitalized waste stripping (CWS)	\$462		\$1.98	\$70
Asset retirement obligation	\$83		\$0.35	\$13
<b>AISC</b>	<b>\$5,620</b>		<b>\$24.12</b>	<b>\$854</b>

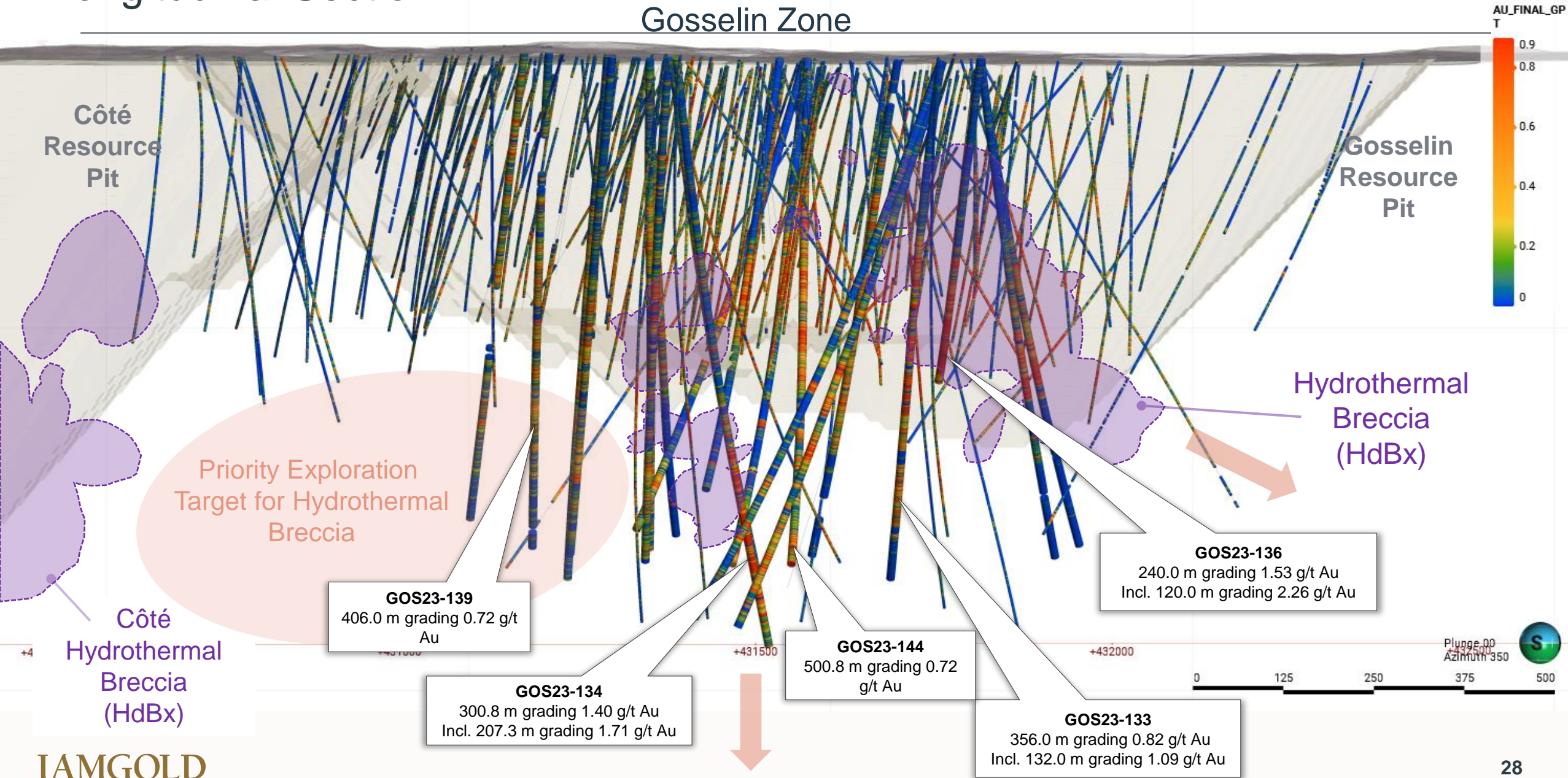
1. Mining (gross cost incl. CWS) is the mining cost including capitalized waste stripping costs

2. Mining (net cost excl. CWS) is the mining cost excluding capitalized waste stripping, with this amount being transferred to sustaining capital



# Longitudinal Section

## Gosselin Zone





# Côte + Gosselin Deposits – Geological Settings

**Abitibi Belt:** > 260 M Oz & Growing

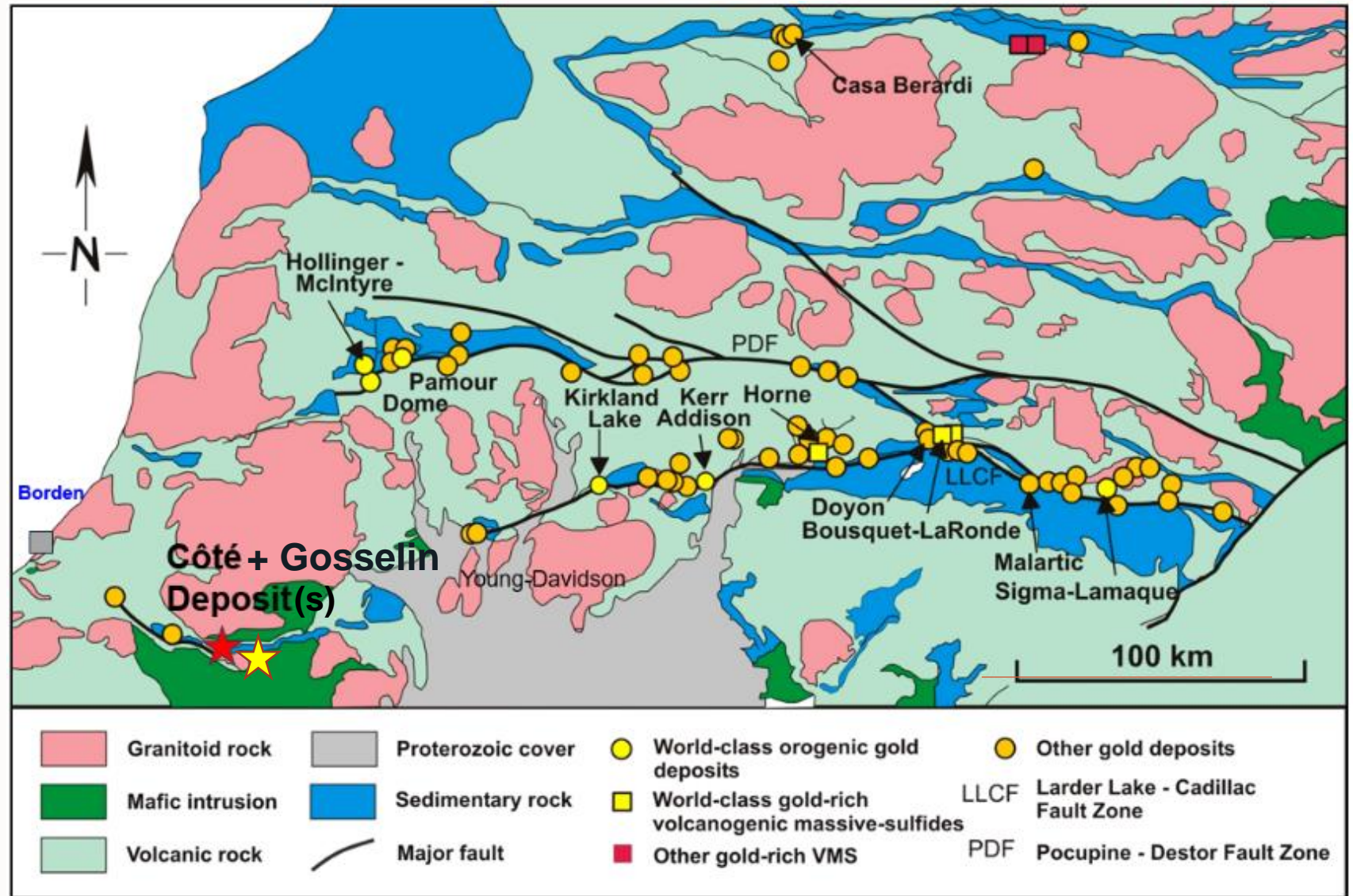
## South Swayze Belt

- 19+ Moz (& growing)
- Historical - Numerous high-grade vein and shear zone hosted deposits

## Gold production within 175 km radius:

- Timmins + KL + Matachewan **897,000** Oz (Guidance 2023)
- **124,000** Au Oz by-product from 8 Sudbury Mines

**1.02 M Oz annual production**





Potential for Côté type (intrusion related, breccia) disseminated mineralization and H-G Shear veins

Extensive Property package of 596 km<sup>2</sup>

JEROME MINE

COTE DEPOSIT

GOSELIN DEPOSIT

Jack Rabbit

Clam Lake

Legend

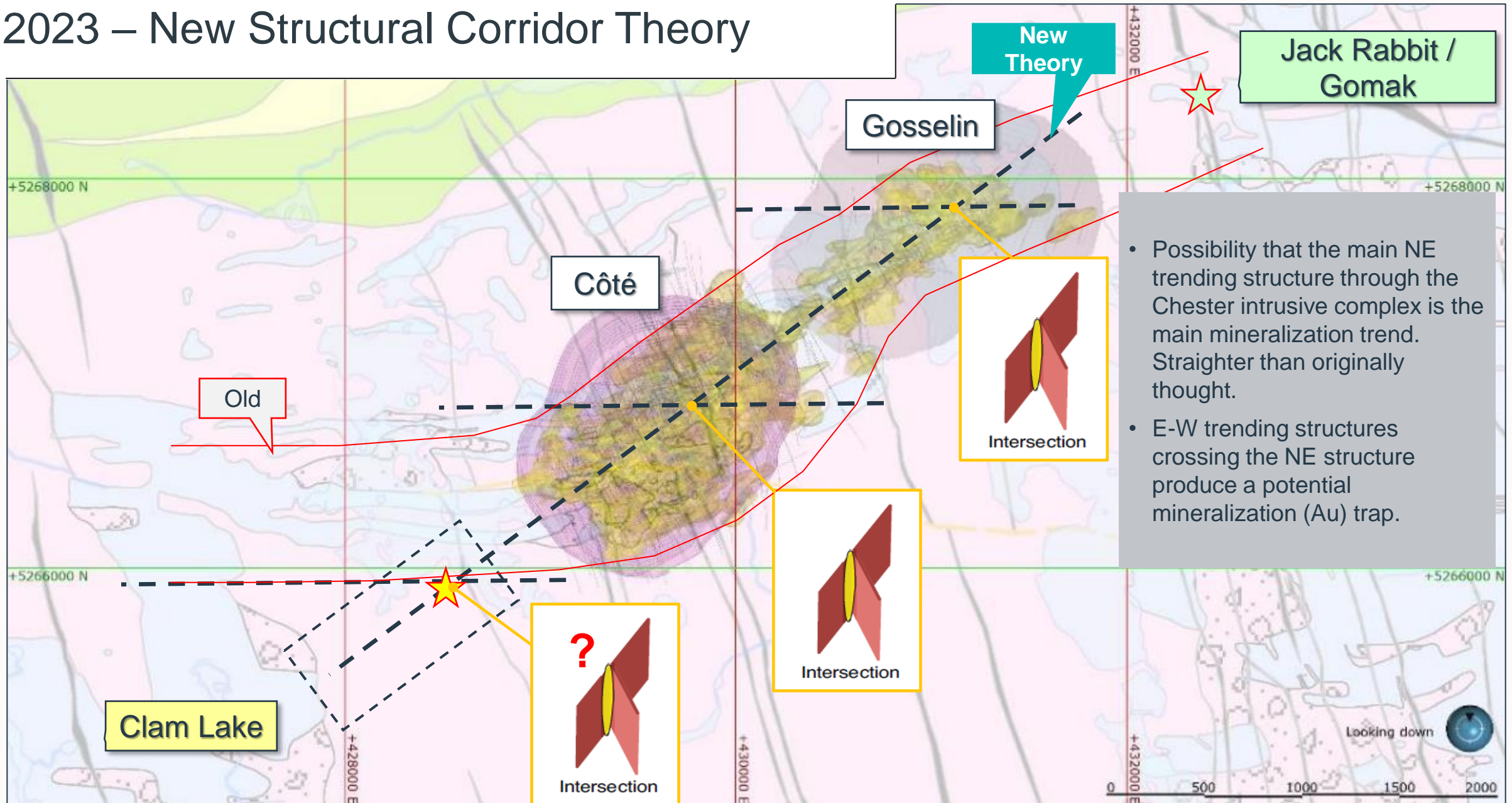
- 15 Diabase Dike
- 13 Alkalic Intrusive Suite
- 12 Felsic to Intermediate Intrusive Suite
- 11 Porphyry Suite
- 10 Mafic Intrusive Rocks
- 9 Ultramafic Intrusive Rocks
- 8 Timiskaming-type Clastic Metasedimentary Rocks
- 7 Chemical Metasedimentary Rocks
- 6 Clastic Metasedimentary Rocks
- 4 Felsic (to Intermediate) Metavolcanic Rocks/Intrusions
- 3 Intermediate (to Felsic) Metavolcanic Rocks/Intrusions
- 2 Mafic (to Intermediate) Metavolcanic Rocks/Intrusions
- 1 Ultramafic (to Mafic) Metavolcanic Rocks/Intrusions

- Gosselin Resource Pit
- Cote Pit
- Cote Gold Project
- Claim Package Outline
- Highway\_144
- Secondary roads





# 2023 – New Structural Corridor Theory



- Possibility that the main NE trending structure through the Chester intrusive complex is the main mineralization trend. Straighter than originally thought.
- E-W trending structures crossing the NE structure produce a potential mineralization (Au) trap.



# Essakane Gold Mine, Burkina Faso



# Essakane – Overview

OWNERSHIP: 90% IAMGOLD; 10% Government of Burkina Faso

## Mine type

Open Pit

## Start-up

2010

## Mine life

~2028<sup>1</sup>

## 2023 Performance<sup>2</sup>

**372,000 oz**  
(<sup>23</sup> guidance 340 – 380 koz)

## 2024 Guidance<sup>2,3</sup>

**330,000 – 370,000 oz**

## 2024 Capital costs<sup>2,3</sup>

**\$150M sustaining**  
**\$5M expansion**

## OPERATING HIGHLIGHTS IN 2023

- Produced **372,000 ounces** (*attr.*) with average head grade of 1.26 g/t Au
- Cash costs of \$1,181/oz and AISC of \$1,521/oz
- Operations impacted in the year due to the impact of the security situation on the supply chain and need for fuel substation

## OUTLOOK

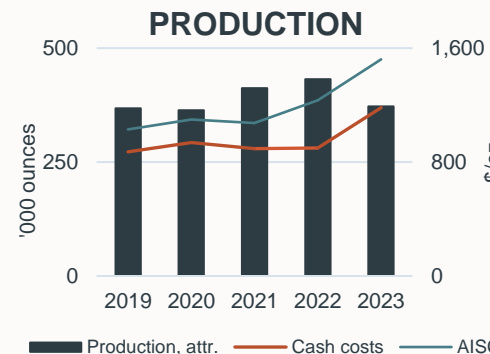
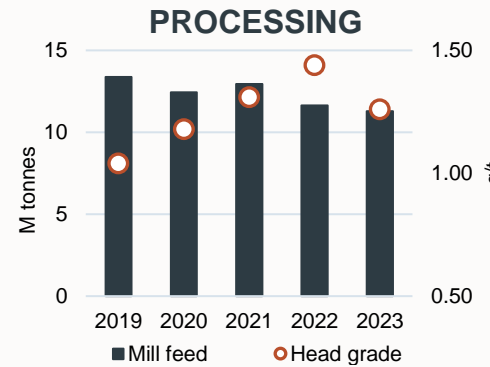
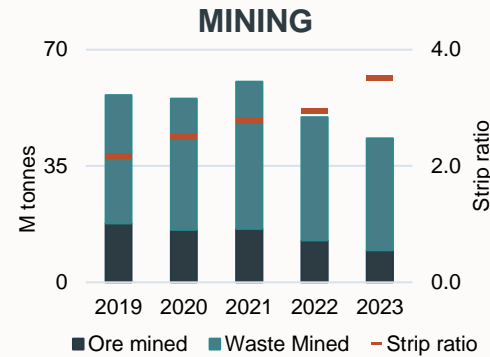
- Estimated annual production between 330,000 – 370,000 ounces in 2024

## OPERATIONAL IMPROVEMENTS

- ✓ 2021: Expanded nameplate hard rock capacity from 10.8 to 11.7 Mtpa
- ✓ 2023: Successful implementation and ramp-up of the MP 1250 crusher that was installed in anticipation of processing of higher proportions of hard rock as the pit deepens

## COMMUNITY RELATIONS

- Continued its participation in the Mining Fund for Local Development in Burkina Faso
- Numerous community programs to support agricultural efforts, fight against Dengue fever, food donations to vulnerable people, and water infrastructure initiatives



## RESERVES & RESOURCES<sup>4</sup>

Category	Tonnes (000's)	Grade (g/t)	Ounces (000's)
<b>Reserves</b>			
P&P	62,170	1.10	2,204
<b>Resources</b>			
M&I*	87,081	1.21	3,390
Inferred	8,344	1.46	392

\* inclusive of mineral reserves



# Westwood Complex, Canada



# Westwood – Overview

OWNERSHIP: 100% IAMGOLD

**Mine type**  
Underground | Satellite OP

**Start-up**  
2014

**Mine life**  
~2033+<sup>1</sup>

**2023 Performance<sup>2</sup>**  
93,000 oz  
(\*23 guidance 70 – 90 koz)

**2024 Guidance<sup>2,3</sup>**  
100,000 – 120,000 oz

**2024 Capital costs<sup>2,3</sup>**  
\$65M sustaining  
\$0M expansion

## UNDERGROUND TURNAROUND

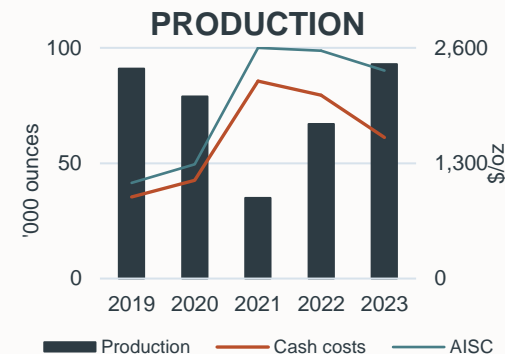
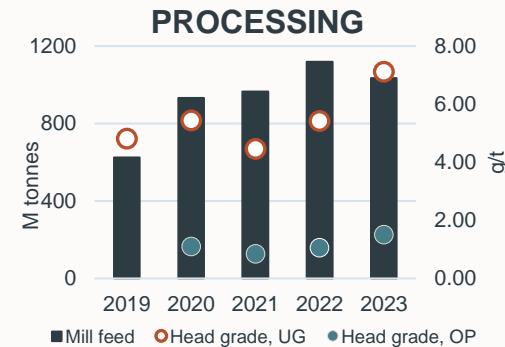
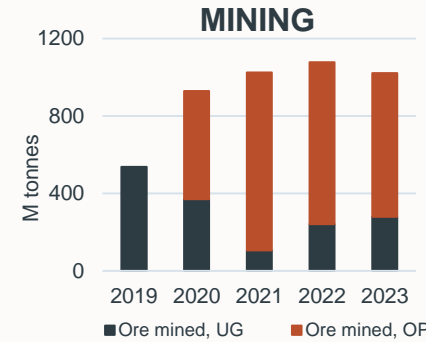
- Underground was put on care & maintenance following a seismic event in October 2020 following a COVID-19 shutdown earlier in the year
- Production resumed through processing of stockpile material and Grand Duc satellite open pit ore
- Underground operations in the East Zone recommenced in June 2021
- Mining in the high grade Central and West Zones resumed in June 2022

## 2023 HIGHLIGHTS

- Produced **93,000 ounces in 2023** at average head grades of 3.03 g/t
- Cash costs of \$1,591/oz and AISC of \$2,344/oz
- Production expected to increase into 2024 as ground support activities allow for increased development and mining activities

## 2024 OUTLOOK

- Expected annual production of 100,000 – 120,000 ounces in 2024 from continued increase in underground ounces and Fayolle contribution
- Cash costs of \$1,250 - \$1,375/oz | AISC of \$1,800 - \$2,000/oz



## RESERVES & RESOURCES<sup>4</sup>

Category	Tonnes (000's)	Grade (g/t)	Ounces (000's)
<b>Reserves</b>			
P&P	5,289	7.14	1,214
<b>Resources</b>			
M&I*	8,415	8.96	2,425
Inferred	1,465	15.78	743

\* inclusive of mineral reserves

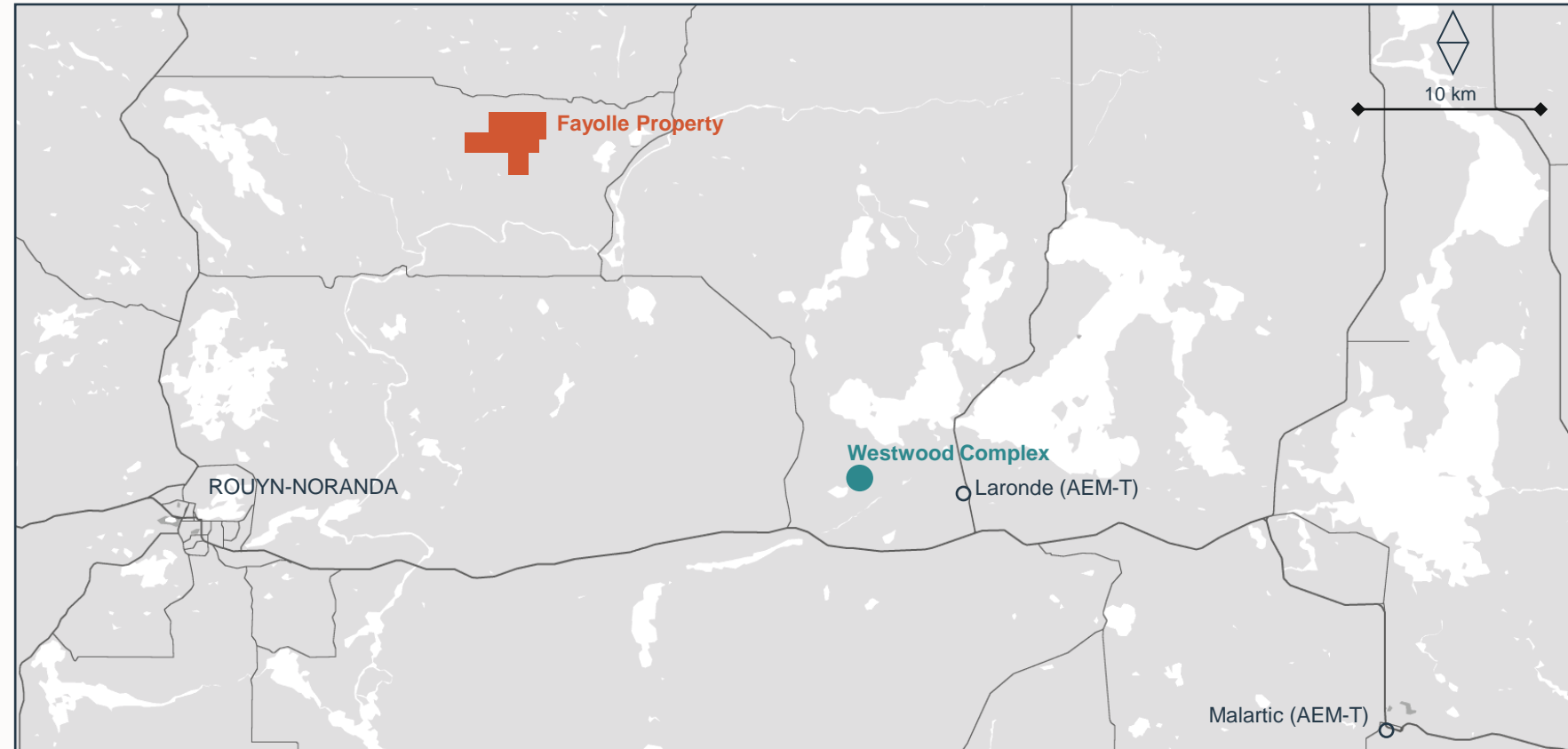


# Westwood – “Hub-and-Spoke” Potential

## FAYOLLE PROPERTY (OP)

100% ACQUIRED FROM MONARCH GOLD (2020)

- ~35 km northeast of Rouyn-Noranda and ~29 km northwest from Westwood
- 39 mineral claims covering an area of 1,373 hectares (14 km<sup>2</sup>)
- Resource estimate work ongoing with focus on high-grade near-surface mineralization
- **May provide incremental feed commencing in 2023, pending permitting<sup>1</sup>**
- Historical 2019 drill highlights<sup>2</sup>:
  - 6.1m grading 8.37 g/t
  - 2.7m grading 50.94 g/t
  - 3.0m grading 37.97 g/t
  - 4.0m grading 15.79 g/t



# Bambouk District: Boto – Karita – Diakha-Siribaya

## STRATEGIC REVIEW

- On December 20, 2022, IAMGOLD announced agreement to sell Bambouk assets to Managem (CAS:MNG) for aggregate consideration of approximately \$282 million<sup>6</sup> with close expected by Q2/Q3 2023

### Boto Gold

Closed on April 26, 2023 for aggregate gross proceeds of approximately \$197.6 million (pre-tax)

### Karita Discovery (100% ownership)

EXPLORATION STAGE

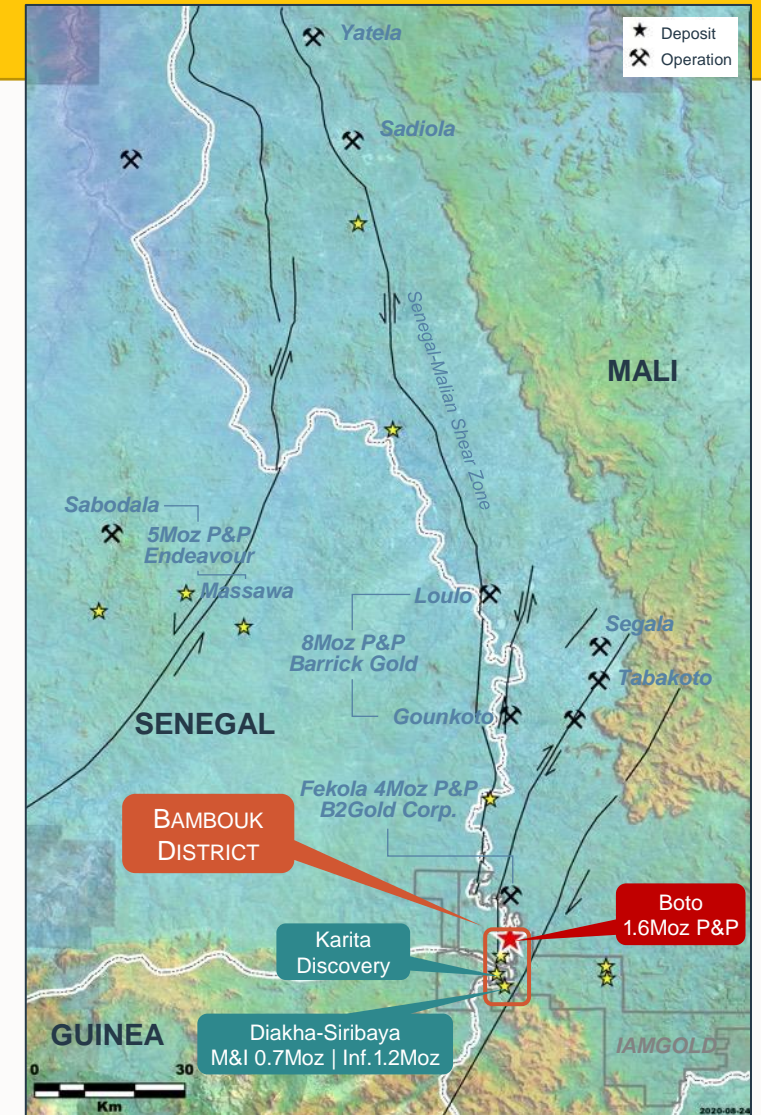
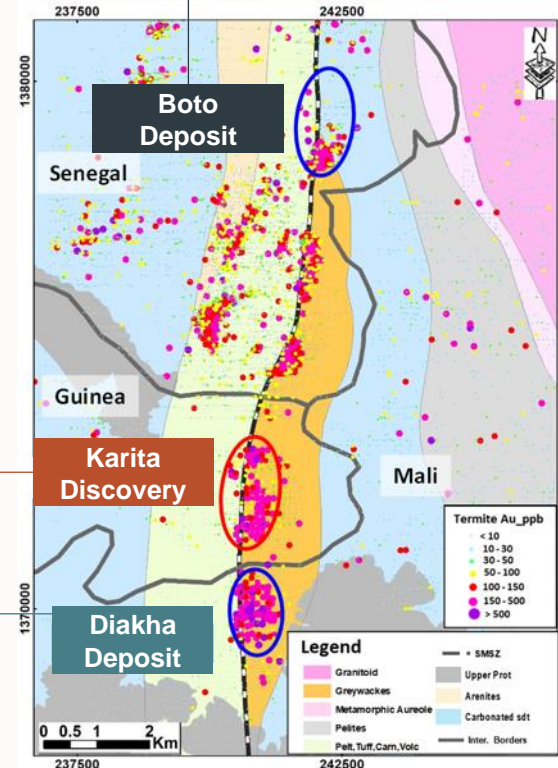
- Located in north-eastern Guinea covering an area of 100 km<sup>2</sup>
- Acquired 100% in 2017 as a granted exploration permit
- Highlight intercepts: 29m @ 2.96 g/t; 21m @ 9.01 g/t<sup>4</sup>

### Diakha Deposit (90% ownership)

0.7Moz INDICATED<sup>1</sup>

1.2Moz INFERRED<sup>1</sup>

- <1 km south of Karita across the border of western Mali
- 8 contiguous exploration permits covering 596.5 km<sup>2</sup>
- Hosts an indicated resource of 18.0 Mt grading 1.28 g/t inferred resource of 23.2 Mt grading 1.58 g/t<sup>5</sup>
- Targeting an updated resource estimate in H1 2022





# Gold Mineral Reserves – 100% Basis

<i>As of December 31, 2023</i>				PROVEN			PROBABLE			TOTAL RESERVES		
DEPOSIT	Type*	Location	Ownership	Tonnes (000's)	Grade (g/t)	Ounces (000's)	Tonnes (000's)	Grade (g/t)	Ounces (000's)	Tonnes (000's)	Grade (g/t)	Ounces (000's)
Essakane <sup>2</sup>	OP	Burkina Faso	90%	20,047	0.65	417	42,123	1.32	1,787	62,170	1.10	2,204
Westwood <sup>3</sup>	UG + OP	Canada	100%	847	5.07	138	4,442	7.53	1,076	5,289	7.14	1,214
Côté Gold <sup>2</sup>	OP	Canada	60.3%	132,202	1.09	4,620	102,442	0.91	2,990	234,644	1.01	7,610
<b>TOTAL RESERVES<sup>1</sup></b>				<b>153,095</b>	<b>1.05</b>	<b>5,175</b>	<b>149,008</b>	<b>1.22</b>	<b>5,853</b>	<b>302,103</b>	<b>1.14</b>	<b>11,028</b>

\* OP = Open Pit; UG = Underground

1 Figures may not add due to rounding.

2 2023 Mineral Reserves estimated as of December 31, 2023, using a gold price of \$1,400 per ounce for Essakane and Côté Gold.

3 Westwood (underground) Mineral Reserves have been estimated as of December 31, 2023 using a \$1,300/oz gold price and a 6.41g/t Au cutoff grade, The Grand Duc Mineral Reserves estimate is included in the Westwood Reserves estimate and have been estimated as of December 31, 2023 using a gold price of \$1,600/oz.

# Gold Mineral Resources<sup>1,2</sup> – 100% Basis

(Measured & Indicated Resources are inclusive of Proven & Probable Reserves)

As of December 31, 2023				MEASURED			INDICATED			MEASURED + INDICATED			INFERRED		
DEPOSIT	Type*	Location	Ownership	Tonnes (000's)	Grade (g/t)	Ounces (000's)	Tonnes (000's)	Grade (g/t)	Ounces (000's)	Tonnes (000's)	Grade (g/t)	Ounces (000's)	Tonnes (000's)	Grade (g/t)	Ounces (000's)
Essakane <sup>2</sup>	OP	Burkina Faso	90%	21,379	0.64	439	65,702	1.40	2,951	<b>87,081</b>	<b>1.21</b>	<b>3,390</b>	8,344	1.46	392
Westwood <sup>3</sup>	UG+OP	Canada	100%	1,158	7.85	292	7,257	9.14	2,133	<b>8,415</b>	<b>8.96</b>	<b>2,425</b>	1,465	15.78	743
Côte Gold <sup>2</sup>	OP	Canada	60.3%	167,040	0.96	5,160	277,733	0.77	6,907	<b>444,773</b>	<b>0.84</b>	<b>12,067</b>	60,591	0.61	1,184
Gosselin <sup>2</sup>	OP	Canada	60.3%				161,300	0.85	4,420	<b>161,300</b>	<b>0.85</b>	<b>4,420</b>	123,900	0.75	2,980
Nelligan <sup>2,6,7</sup>	OP	Canada	75% <sup>7</sup>				74,500	0.84	2,006	<b>74,500</b>	<b>0.84</b>	<b>2,006</b>	142,600	0.85	3,889
Monster Lake <sup>4</sup>	UG	Canada	100%										1,110	12.14	433
Gossey <sup>2</sup>	OP	Burkina Faso	90%				7,690	0.91	224	<b>7,690</b>	<b>0.91</b>	<b>224</b>	1,520	1.04	51
Diakha-Siribaya <sup>5</sup>	OP	Mali	90%				27,937	1.48	1,325	<b>27,937</b>	<b>1.48</b>	<b>1,325</b>	8,468	1.53	417
<b>TOTAL RESOURCES<sup>1</sup></b>				<b>189,577</b>	<b>0.97</b>	<b>5,891</b>	<b>622,119</b>	<b>1.00</b>	<b>19,966</b>	<b>811,696</b>	<b>0.99</b>	<b>25,857</b>	<b>347,997</b>	<b>0.90</b>	<b>10,090</b>

\* OP = Open Pit; UG = Underground

1 Figures may not add due to rounding.

2 2023 Mineral Resources estimated as of December 31, 2023, using a gold price of \$1,700 per ounce for Essakane, Côte Gold, Gosselin, Nelligan and Gossey; and have been estimated in accordance with NI 43-101.

3 Westwood Mineral Resources have been estimated as of December 31, 2023 using a 6.30g/t Au cut-off grade over a minimum width of 2.4 metres, using a \$1,600/oz gold price and have been estimated in accordance with NI 43-101. The Grand Duc Mineral Resources and Reserves estimate is included in the Westwood Mineral Resources and Reserves estimates. The Grand Duc Mineral Resources have been estimated as of December 31, 2023 using a gold price of \$1,700/oz and have been estimated in accordance with NI 43-101.

4 Monster Lake Mineral Resources have been estimated as of December 31, 2023 using a \$1,500/oz gold price and have been estimated in accordance with NI 43-101.

5 Diakha-Siribaya Mineral Resources have been estimated as of December 31, 2023 using a \$1,500/oz gold price and have been estimated in accordance with NI 43-101. On December 20, 2022, IAMGOLD announced that it had entered into definitive agreements to sell the Company's interests in Diakha-Siribaya. This sale is expected to close in 2024.

6 Nelligan 2022 Mineral Resource estimate announced on January 12, 2023 was amended prior to filing of the Technical Report on February 23, 2023. The changes resulted to a 21,000 ounce increase in estimated Indicated Mineral Resources and 362,000 ounce increase to Inferred Mineral Resources due to amendments made to the mining cost applied to waste material and to the percentage of payable metal applied relative to the Mineral Resource Estimate reported on January 12, 2023.

7 Subsequent to the end of the year, on February 13, 2024, IAMGOLD completed the acquisition of Vanstar Resources, increasing the ownership of Nelligan to 100%.



# IAMGOLD<sup>®</sup>

C O R P O R A T I O N

Graeme Jennings, VP, Investor Relations  
416-388-6883

TSX: IMG | NYSE: IAG | [www.iamgold.com](http://www.iamgold.com)