



Bank of America – Virtual Conference

May 12-14

TSX: IMG | NYSE: IAG

Cautionary statement

All information included in this presentation whether in narrative or chart form, including any information as to the Company's future financial or operating performance, and other statements that express management's expectations or estimates of future performance, other than statements of historical fact, constitute forward looking information or forward-looking statements and are based on expectations, estimates and projections as of the date of this presentation. Forward-looking statements contained in this presentation include, without limitation, statements with respect to: the Company's guidance for production, cash costs, all-in sustaining costs, depreciation expense, effective tax rate, and operating margin, capital expenditures, operations outlook, cost management initiatives, development and expansion projects, exploration, the future price of gold, the estimation of mineral reserves and mineral resources, the realization of mineral reserve and mineral resource estimates, the timing and amount of estimated future production, costs of production, permitting timelines, currency fluctuations, requirements for additional capital, government regulation of mining operations, environmental risks, unanticipated reclamation expenses, title disputes or claims and limitations on insurance coverage. Forward-looking statements are provided for the purpose of providing information about management's current expectations and plans relating to the future. Forward-looking statements are generally identifiable by, but are not limited to, the use of the words "may", "will", "should", "continue", "expect", "budget", "forecast", "anticipate", "estimate", "believe", "intend", "plan", "schedule", "guidance", "outlook", "potential", "seek", "targets", "strategy", "superior" or "project" or the negative of these words or other variations on these words or comparable terminology. Forward-looking statements are necessarily based upon a number of estimates and assumptions that, while considered reasonable by management, are inherently subject to significant business, economic and competitive uncertainties and contingencies. The Company cautions the reader that reliance on such forward-looking statements involve risks, uncertainties and other factors that may cause the actual financial results, performance or achievements of IAMGOLD to be materially different from the Company's estimated future results, performance or achievements expressed or implied by those forward-looking statements, and the forward-looking statements are not guarantees of future performance. These risks, uncertainties and other factors include, but are not limited to, changes in the global prices for gold, copper, silver or certain other commodities (such as diesel and electricity); changes in U.S. dollar and other currency exchange rates, interest rates or gold lease rates; risks arising from holding derivative instruments; the level of liquidity and capital resources; access to capital markets, and financing; mining tax regimes; ability to successfully integrate acquired assets; legislative, political or economic developments in the jurisdictions in which the Company carries on business; operating or technical difficulties in connection with mining or development activities including geotechnical difficulties and seismicity; laws and regulations governing the protection of the environment; employee relations; availability and increasing costs associated with mining inputs and labour; negotiations with respect to new, reasonable collective labour agreements may not be successful which could lead to a strike or work stoppage in the future, and any such strike or work stoppage could have a material adverse effect on the Company's earnings and financial condition; the speculative nature of exploration and development, including the risks of diminishing quantities or grades of reserves; adverse changes in the Company's credit rating; contests over title to properties, particularly title to undeveloped properties; the ability to deliver gold as required under forward gold sale arrangements; the rights of counterparties to terminate forward gold sale arrangements in certain circumstances, the inability to participate in any gold price increase above the cap in any collar transaction entered into in conjunction with a forward gold sale arrangement, such as the collar entered into in conjunction with the gold sold forward in January of 2019; and the risks involved in the exploration, development and mining business. The Company is also subject to litigation and legal and political risks. With respect to development projects, IAMGOLD's ability to sustain or increase its present levels of gold production is dependent in part on the success of its projects. Risks and unknowns inherent in all projects include the inaccuracy of estimated reserves and resources, metallurgical recoveries, capital and operating costs of such projects, and the future prices for the relevant minerals. Development projects have no operating history upon which to base estimates of future cash flows. The capital expenditures and time required to develop new mines or other projects are considerable, and changes in costs or construction schedules can affect project economics. Actual costs and economic returns may differ materially from IAMGOLD's estimates or IAMGOLD could fail to obtain the governmental approvals necessary for the operation of a project; in either case, the project may not proceed, either on its original timing or at all.

Exploration Target Potential: The potential quantity and grade of the exploration targets referred to are conceptual in nature and insufficient exploration work has been completed to define a mineral resource. The property will require significant future exploration to advance to a resource stage and there can be no certainty that the exploration target will result in a mineral resource being delineated. The exploration targets are consistent with similar deposits in the area, deposit models or derived from initial drilling results.

For a more comprehensive discussion of the risks faced by the Company, and which may cause the actual financial results, performance or achievements of IAMGOLD to be materially different from the company's estimated future results, performance or achievements expressed or implied by forward-looking information or forward-looking statements, please refer to the Company's latest Annual Information Form, filed with Canadian securities regulatory authorities at www.sedar.com, and filed under Form 40-F with the United States Securities Exchange Commission at www.sec.gov/edgar.shtml. The risks described in the Annual Information Form (filed and viewable on www.sedar.com and www.sec.gov/edgar.shtml, and available upon request from the Company) are hereby incorporated by reference into this presentation.

The Company disclaims any intention or obligation to update or revise any forward-looking statements whether as a result of new information, future events or otherwise except as required by applicable law.

All amounts in this presentation are expressed in U.S. dollars except as otherwise noted.

Technical information and qualified persons

The mineral resource estimates contained in this news release have been prepared in accordance with National Instrument 43-101 Standards of Disclosure for Mineral Projects ("NI 43-101"). The "Qualified Person" responsible for the review and approval of all year-end mineral resource and reserve estimates for IAMGOLD contained herein is Lise Chenard, Eng., Director, Mining Geology. Lise has worked in the mining industry for more than 35 years, mainly in operations, project development and consulting. She joined IAMGOLD in April 2013 and acquired her knowledge of the Company's operations and projects through site visits, information reviews and ongoing communication and oversight of mine site technical service teams or consultants responsible for resource and reserve modeling and estimation. She is considered a "Qualified Person" for the purposes of NI 43-101 with respect to the mineralization being reported on. The technical information has been included herein with the consent and prior review of the above noted Qualified Person. The Qualified person has verified the data disclosed, and data underlying the information or opinions contained herein.

Drilling results in this presentation have been prepared in accordance with National Instrument 43-101 Standards of Disclosure for Mineral Projects. The sampling of, and assay data from, drill core is monitored through the implementation of a quality assurance - quality control (QA-QC) program designed to follow industry best practice. The "Qualified Person" responsible for the supervision of the preparation, verification, and review of these results is Craig MacDougall, P.Geo., Senior Vice President, Exploration for IAMGOLD. Mr. MacDougall is a Qualified Person as defined by National Instrument 43-101.

For readers to fully understand the information in this presentation, they should read the Technical Report in its entirety, including all qualifications, assumptions and exclusions that relate to the information set out in the Technical Report which qualifies the technical information contained in the Technical Report. The Technical Report is intended to be read as a whole, and sections should not be read or relied upon out of context. The Technical Report describes the Mineral Resource and Mineral Reserve estimation methodologies and the assumptions used, and to which those estimates are subject. INV Metals' AIF includes details of certain risk factors that could materially affect the potential development of the Mineral Resources and Mineral Reserves and should be considered carefully. A discussion of these and other factors is contained in "Risk Factors" and elsewhere in the Company's AIF, which was filed on SEDAR on February 19, 2020.

Cautionary Note to Investors Concerning Estimates of Measured and Indicated Resources

This presentation uses the term "indicated resources". We advise investors that while that term is recognized and required by Canadian regulations, the United States Securities and Exchange Commission (the "SEC") does not recognize them. Investors are cautioned not to assume that any part or all of mineral deposits in these categories will ever be converted into reserves.

Cautionary Note to Investors Concerning Estimates of Inferred Resources

This presentation also uses the term "inferred resources". We advise investors that while this term is recognized and required by Canadian regulations, the SEC does not recognize it. "Inferred resources" have a great amount of uncertainty as to their existence and great uncertainty as to their economic and legal feasibility. It cannot be assumed that all or any part of an inferred mineral resource will ever be upgraded to a higher category. Under Canadian rules, estimates of inferred mineral resources may not form the basis of feasibility or pre-feasibility studies, except in rare cases. Investors are cautioned not to assume that part or all of an inferred resource exists, or is economically or legally mineable.

IAMGOLD – Operating from a Position of Strength

Strong Balance Sheet

Geographically Diverse Operations

Effective Crisis Management

Deep Bench Strength

Collaborative Approach

IAMGOLD's COVID-19 response

Zero Harm© is our commitment to continually strive to reach the highest standards in human health, minimize our impact on the environment, and work co-operatively with our host communities.

- Activated cross functional **Crisis Committees**:
 - Site operations and combined operations, projects and exploration committees; broad range of expertise.
- **Health & Safety measures undertaken**:
 - Extensive steps to protect the health and safety of employees and contractors.
- **Working with host communities and local governments** to safeguard vulnerable communities:
 - By bolstering food security, donating medical equipment and contributing to COVID-19 relief programs.
- COVID-19 **limited impact to mining Operations in Q1/2020**:
 - Production continued uninterrupted at Essakane and Rosebel;
 - Westwood care and maintenance had limited production impact.
 - However, sales postponed at the quarter-end due to the global COVID-19 crisis.
- **Government subsidies**:
 - Determining eligibility and impact of Federal and Provincial COVID-19 related support programs.

COVID-19 Measures - Essakane

Below: frequent cleaning and disinfection

At right: convenient handwashing stations.



COVID-19 Measures - Rosebel



Bus pick up point incorporates social distancing and reduced numbers in each shuttle.

Kitchen facilities - line ups incorporate social distancing, while lunch times are staggered.



COVID-19 Measures - Westwood



Successful first attempt to bring workers underground under new protocol, including maintaining personal distance, reducing the number of people in the cage and increasing cage runs.

Below: Supervisors' booths show integration of dividers and protective screens. Markers on floor indicate flow of movement to support social distancing.



Environmental, Social and Governance (ESG)



Creating superior shareholder value

Reinforcing the model

- Manage operating costs to maintain positive cash flow;
- Capital expenditures reflect value-adding initiatives.

Operational improvements at our current sites:

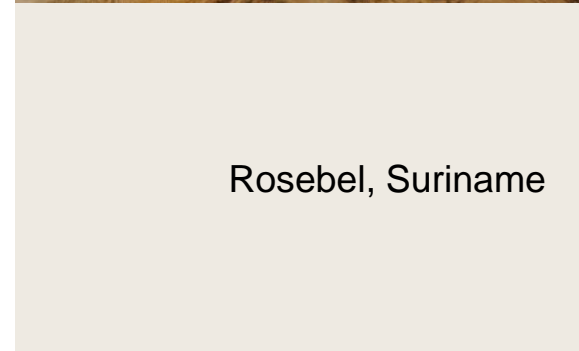
- Optimization of Essakane mill, CIL/HL in series;
- Saramacca ramp-up and optimization;
- Redesign of Westwood.

Disciplined approach to realizing value:

- Advancement of Westwood;
- Ramp up of Saramacca;
- Issued Nelligan Initial Resource Estimate;
- Received exploitation concession at Boto (Dec 2019);
- De-risking of Côte, within budget.



Essakane, Burkina Faso



Rosebel, Suriname



Westwood, Canada

Maintaining a strong balance sheet

LIQUIDITY WELL ABOVE \$1 BILLION

Cash and cash equivalents¹	\$795 M
--	---------

Short-term investments	\$ 7 M
-------------------------------	--------

Available credit facility	\$500 M
----------------------------------	---------

Total Liquidity	\$1,302 M
------------------------	------------------

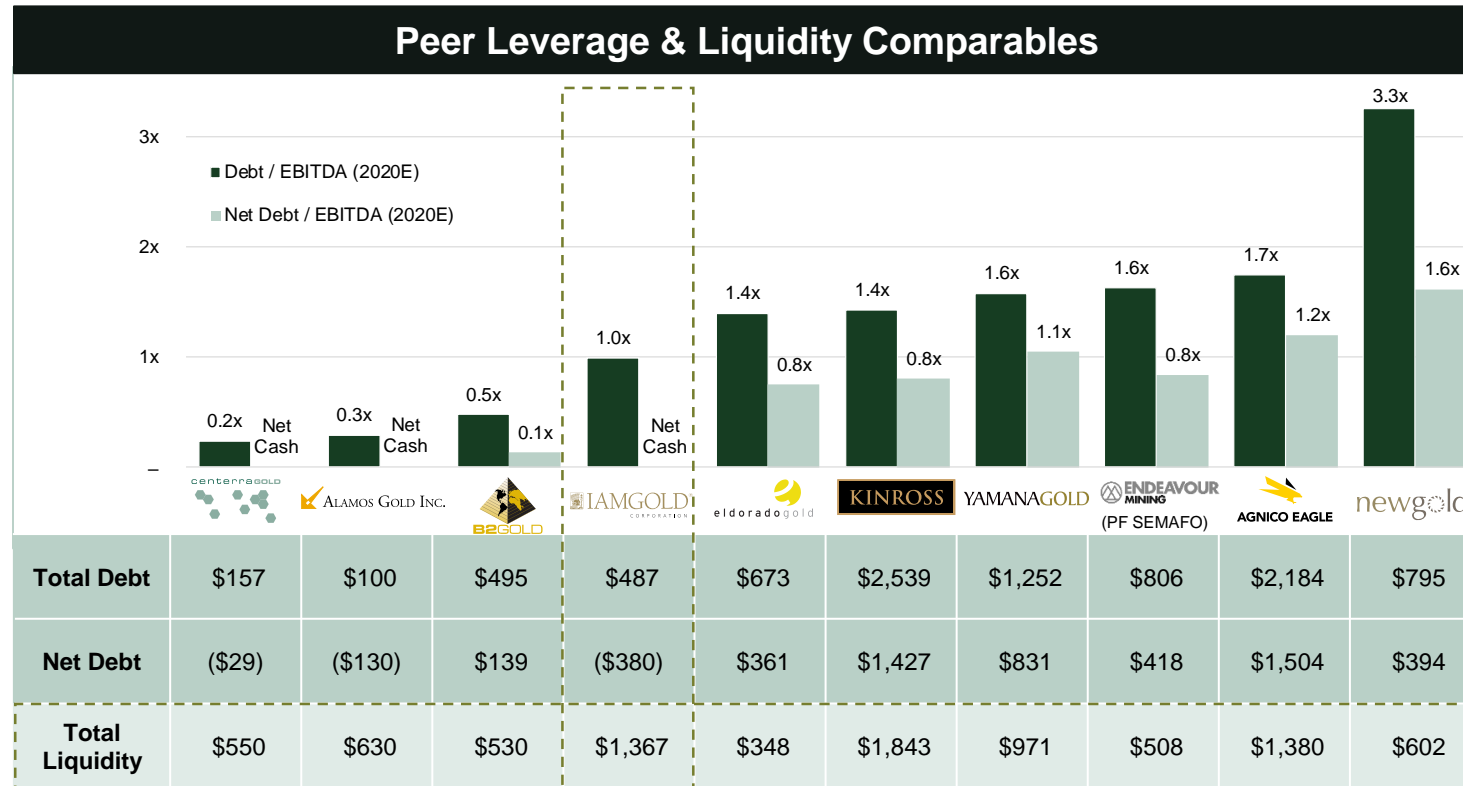
As at March 31, 2020

Senior Notes Outstanding	(\$400 M)
---------------------------------	------------------

Coupon: 7%; Maturity: April 15, 2025
Corp Rating: B1 (Moody's) and B+ (S&P)

¹ Excludes restricted cash of \$28 million.

Leader among peers: leverage and liquidity



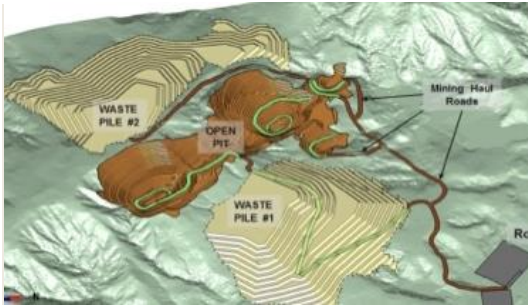
Courtesy of TD Securities.

Source: Capital IQ, and company reports. Market data as of May 1, 2020. Metrics in US\$M unless otherwise noted

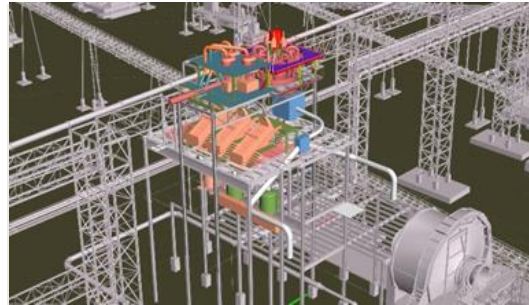
Note: Total debt includes leases. Drawn revolver does not include letters of credit, however total liquidity is adjusted to reflect undrawn revolver portion committed to letters of credit. Cash includes short-term investments. Cash and debt adjusted for all disclosed post-balance sheet date events, including recently drawn revolvers in response to COVID-19.

Ensuring a robust pipeline

FUTURE PRODUCTION AND GROWTH OPPORTUNITIES



Saramacca, Suriname



Mill Optimization, Burkina Faso



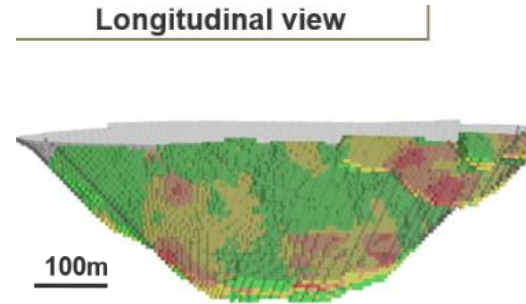
Côté Gold Project, Ontario



Boto Gold Project, Senegal



Diakha-Siribaya, Mali



Nelligan Gold Project, Quebec

GROWTH OPPORTUNITIES

- **Gosselin (Côté), Ontario**
- **Monster Lake, Quebec**
- **Rouyn, Quebec**
- **Karita, Guinea**
- **Pitangui, Brazil**

Reserve & resource update

Attributable Contained Gold (000s oz)

As at December 31st, 2019

	2019	Change	2018
Total Proven and Probable Mineral Reserves¹	16,706	(6%)	17,864
Total Measured and Indicated Mineral Resources^{2,3}	27,164	(2%)	27,850
Total Inferred Resources	11,965	38%	8,668

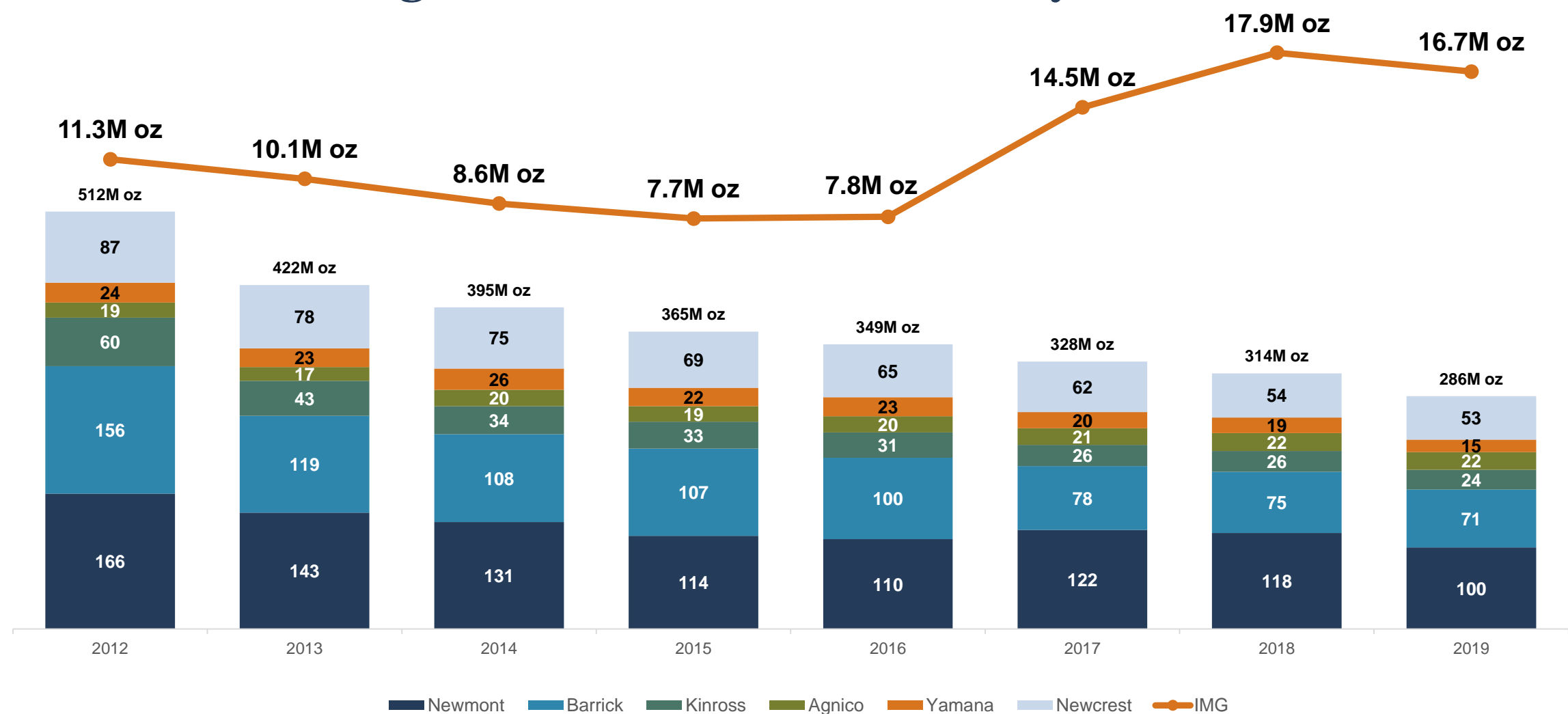
- Mineral reserves have been estimated at December 31, 2019 using a gold price of \$1,200 per ounce for the Company's owned and operated mines and development projects.
- Mineral resources have been estimated at December 31, 2019 using a gold price of \$1,500 per ounce for Essakane, Rosebel, and resource-stage projects and \$1,200 per ounce for Westwood.
- Sadiola reserves and resources have been estimated by our joint venture partner using \$1,200 per ounce and \$1,400 per ounce, respectively.

¹ Detail behind the gold price assumptions used to determine reserves and resources can be found in the Reserves and Resources section of the MD&A

² Measured and indicated gold resources are inclusive of reserves

³ In mining operations, measured and indicated resources that are not mineral reserves are considered uneconomic at the price used for reserves estimations, but are deemed to have a reasonable prospect of economic extraction

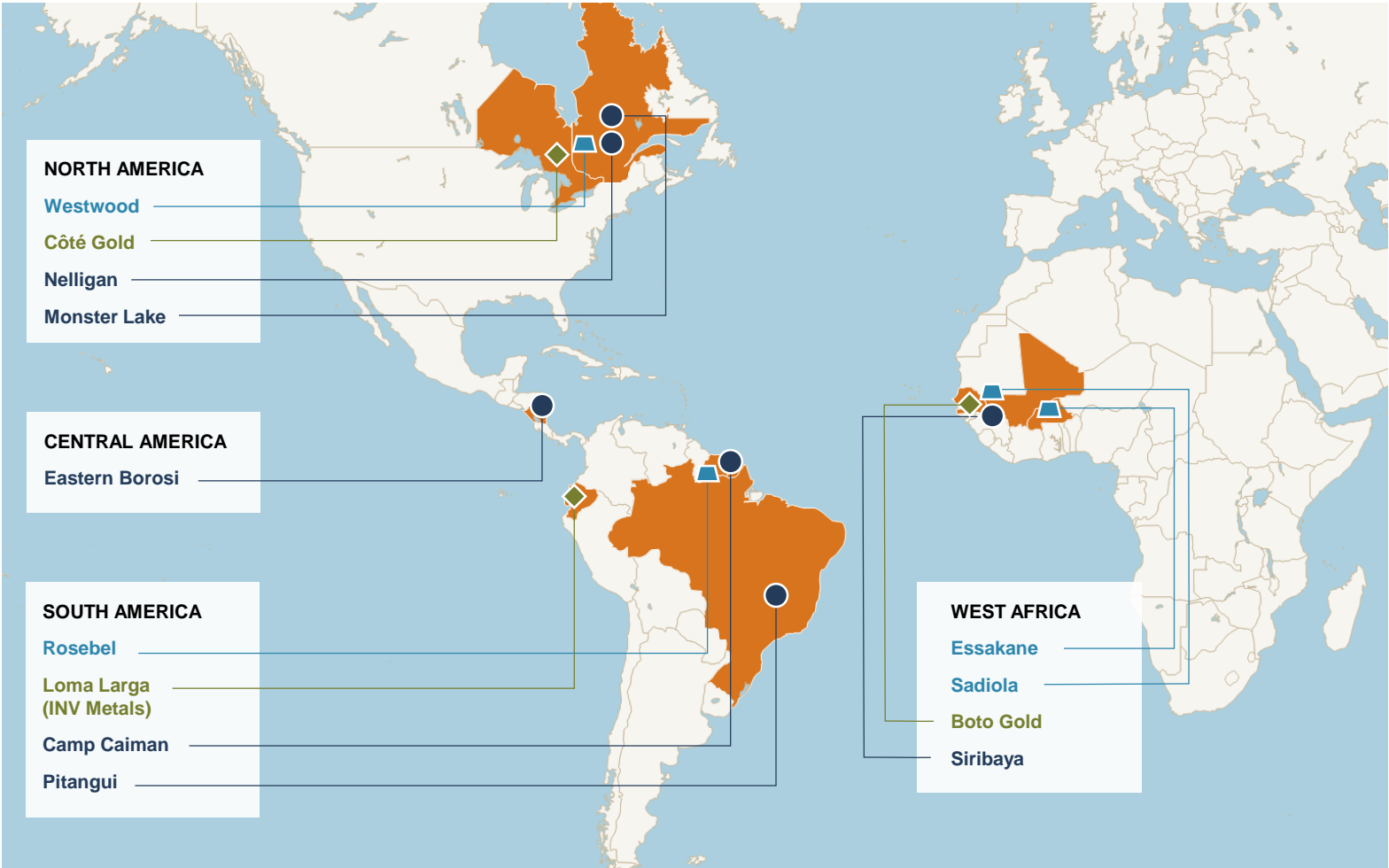
Historic Reserve growth; Counter to Industry Trend



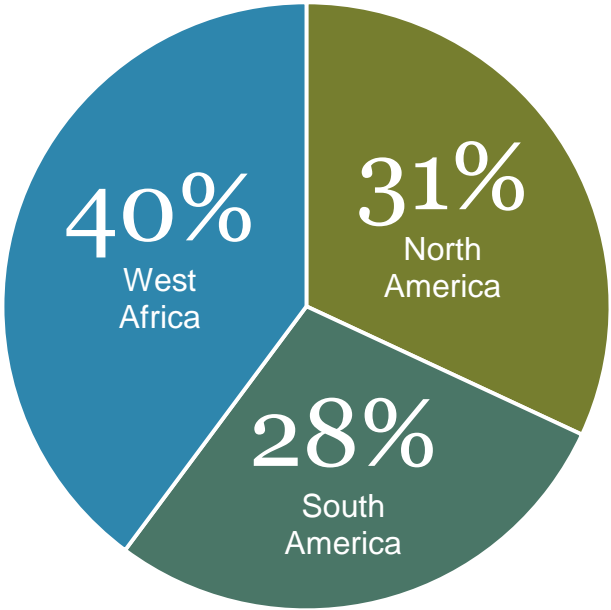
*Source: Company filings. Reserves are presented on an attributable basis. Newmont (Goldcorp) and Barrick (Randgold) pre-merger data is presented on a consolidated basis.
1 IAMGOLD Reserves pre-2017 do not include reduction as part of 2017 JV agreement with SMM (30% or 1.8Moz)

Diversifying our portfolio

MAP OF OPERATING, DEVELOPMENT AND EXPLORATION PROJECTS



ATTRIBUTABLE MEASURED AND INDICATED RESOURCES



As at Dec 31, 2019

- Operating Mine
- Development Project
- Advanced Exploration

Catalysts - 2020 sets up improved profile for 2021

2019

- ✓ Diahka-Siribaya Updated Resource
- ✓ Gosselin Zone Discovery at Côté
- ✓ Essakane CIL and Heap Leach Feasibility Study Completed
- ✓ Nelligan Initial Resource
- ✓ Saramacca First Ore Delivered
- ✓ Receipt of Boto Mining Permit
- ✓ Westwood Guidance
- ✓ Receipt of \$170 Million Gold Prepay
- ✓ De-risking of Côté, within budget

2020

- Westwood NI 43-101
- Saramacca Full Production
- Essakane CIL Plant Optimization
- De-risking Growth Projects
- Resource Delineation (Nelligan, Rouyn, Gosselin, Karita)

2021*

- Westwood Expands Production
- Rosebel Ramp with Saramacca
- Essakane Optimized Mill
- Advancing Growth Projects

**under review for impact of COVID-19*

Leveraging existing asset base



Photo: Wärtsilä

Rosebel Gold Mine, Suriname



Rosebel – overview

OVERVIEW

Ownership	<ul style="list-style-type: none">• Gross Rosebel Concession: 95% IAMGOLD, 5% Government of Suriname• UJV – 70% IAMGOLD, 30% Staatsolie
Mining Method	<ul style="list-style-type: none">• Conventional open pit methods
Production Status	<ul style="list-style-type: none">• Began commercial production in 2004
LOM	<ul style="list-style-type: none">• To 2033, with Saramacca <p><i>Source: NI 43-101 (Q3/2018)</i></p>
2020 Guidance	<ul style="list-style-type: none">• 250 – 270 koz• \$60M sustaining capex• \$55M non-sustaining capex

KEY NOTES

Reserves & Resources

- Rosebel's reserves & resources extends mine life to 2033 including Saramacca

Saramacca Development

- ✓ First ore delivered October 31, 2019
- ✓ Road connection established in Q1'20
- ✓ Online – H2'20
- Pit optimization and underground being studied

Consolidating Prospective Land Packages

- Secured exploration rights to the Brokolonko property, on strike with Saramacca



Brokopondo district in north-eastern Suriname

Essakane Gold Mine, Burkina Faso



Essakane – overview

OVERVIEW

Ownership	<ul style="list-style-type: none">90% IAMGOLD, 10% Government of Burkina Faso
Mining Method	<ul style="list-style-type: none">Conventional drill, blast, load and haul surface mining method
Production Status	<ul style="list-style-type: none">Began commercial production in July 2010Plant expansion was completed on time and under budget at the end of 2013Expanded plant nameplate capacity on 100% hard rock from 10.8 Mtpa to 11.7 MtpaFalagountou satellite deposit mining commenced in 2015
LOM	<ul style="list-style-type: none">CIL to 2026HL 2027-2031 <p><i>Source: NI 43-101 (Q4/2019)</i></p>
2020 Guidance	<ul style="list-style-type: none">350 – 370 koz\$40M sustaining capex\$80M non-sustaining capex

KEY NOTES

CIL (carbon-in-leach) Debottlenecking

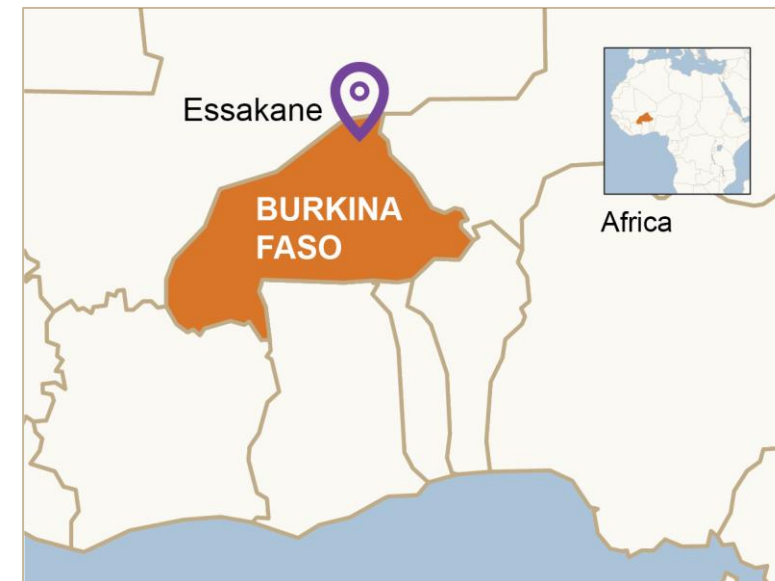
- Improve throughput and gravity recovery, \$9M capex
- ~10% Increase in CIL Mill throughput on hard rock 2020+

Falagountou & Satellite Prospects

- Growing 4 satellite prospects within 10–15 km of mill
- Gossey initial resource¹, comprising 291 koz Indicated and 85 koz Inferred

Heap Leaching²

- Heap Leach after CIL
- Will exploit existing CIL crushing circuit requiring less capital
- Initial capex \$115M (incl. \$9M CIL optimization)



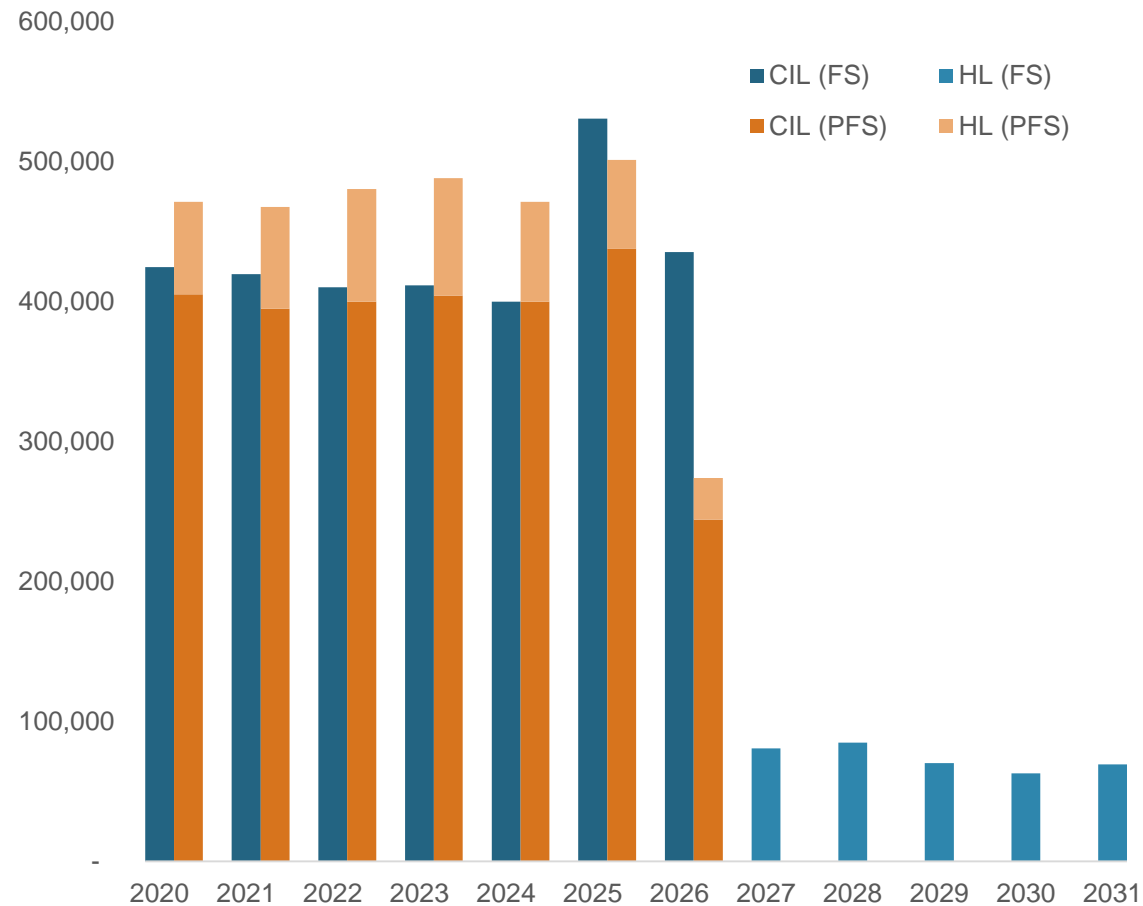
North-eastern Burkina Faso, West Africa

¹ Refer to IAMGOLD news release dated February 18, 2020

² Refer to IAMGOLD news release dated November 6, 2019

CIL/HL feasibility study highlights

PRODUCTION PROFILE



1 Refer to IAMGOLD news release dated November 6, 2019

HIGHLIGHTS

100% Basis ¹	PFS	FS
Mining Capacity	70.0 Mtpa	55.0 Mtpa
CIL Milling Capacity (100% hard rock equivalent)	10.8 Mtpa	11.7 Mtpa
HL Processing Capacity	10.0 Mtpa	8.5 Mtpa
HL Tonnage	61.9 Mt	43.1 Mt
LOM Average Annual Gold Production (CIL)	416k oz (2020-2026)	433k oz (2020-2026)
LOM Average Annual Gold Production (HL)	72k oz (2020-2026)	73.6k oz (2027-2031)
LOM Average Recovery Rate (CIL / HL)	92.1% / 55%	92.1% / 67%
Mine Life	8.5 years	12.0 years
LOM Average Direct Cash Costs	\$707/oz	\$778/oz
LOM Average AISC	\$946/oz	\$949/oz
After-tax NPV@6%		\$874 M
Average diluted grade (CIL / HL)	1.17 g/t Au / 0.43 g/t Au	1.24 g/t Au / 0.40 g/t Au
Initial Capital Expenditure (+20% / -15%)	\$155 M	\$115 M (2025-2026)

Westwood Gold Mine, Canada



Westwood – overview

OVERVIEW

Ownership	<ul style="list-style-type: none"> 100% IAMGOLD
Mining Method	<ul style="list-style-type: none"> Underground
Production Status	<ul style="list-style-type: none"> Began commercial production in July 2014
LOM	<ul style="list-style-type: none"> To 2033
2020 Guidance	<ul style="list-style-type: none"> 85 – 100 koz \$25M sustaining capex \$15M non-sustaining capex

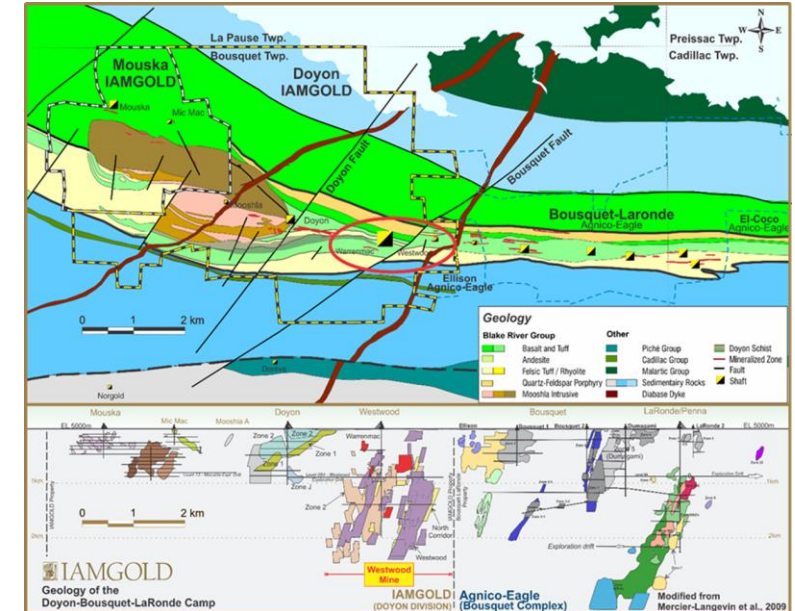
KEY NOTES

Progressing Development

- Targeting safe, profitable, long life mine
- Ramp-up production and cost guidance issued¹
- NI 43-101 Study expected H1'20

Strategic Review Study

- Geotechnical management plan implemented
- Improved micro-seismic system
- Improved ground control packages



**Northwestern Québec
– A Prolific Gold Mining Camp**

¹ Refer to IAMGOLD news release dated December 12, 2019

Development and exploration projects



Côte Gold – transformational value in Canada

OVERVIEW

Location	<ul style="list-style-type: none"> Gogama, Ontario, 130 km southwest of Timmins; 200 km northwest of Sudbury Land package covering 500 km²
Ownership	<ul style="list-style-type: none"> 92.5% JV (70:30 IAMGOLD/SMM); 7.5% other interest
Infrastructure	<ul style="list-style-type: none"> 6km off of a major highway Close to two main rail lines Existing power supply 45 km from site

RESERVE AND RESOURCE¹

(100% Basis)

	Tonnes (000)	Grade (g/t)	Contained Ounces (000 Au)
Proven & Probable	233,000	1.0	7,284
Measured & Indicated *	365,500	0.9	10,200
Inferred *	189,600	0.6	3,820

* Inclusive of Reserves



1 Refer to IAMGOLD news release dated February 18, 2020

2 Refer to news release dated November 1, 2018

FEASIBILITY STUDY HIGHLIGHTS²

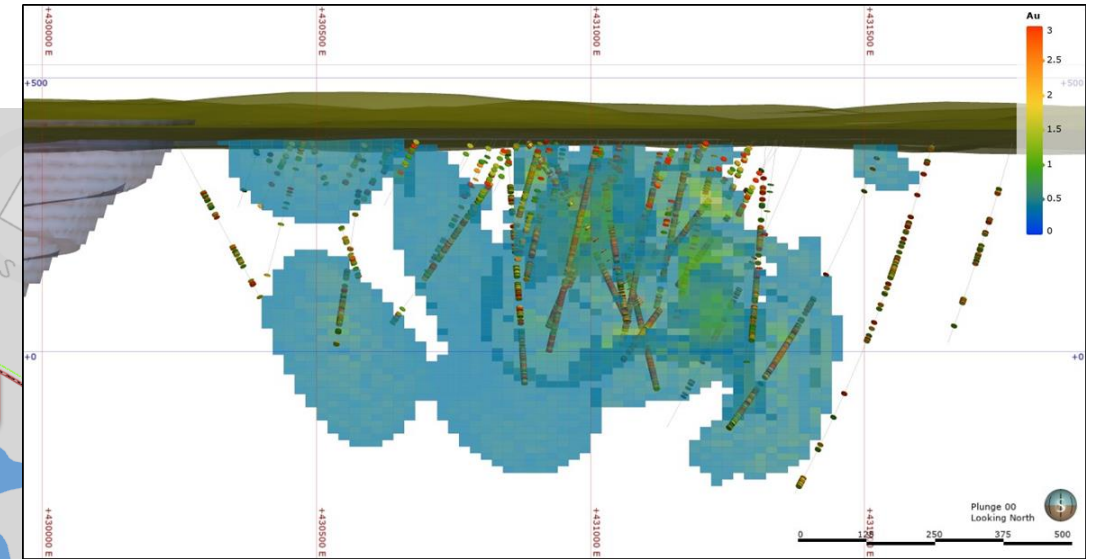
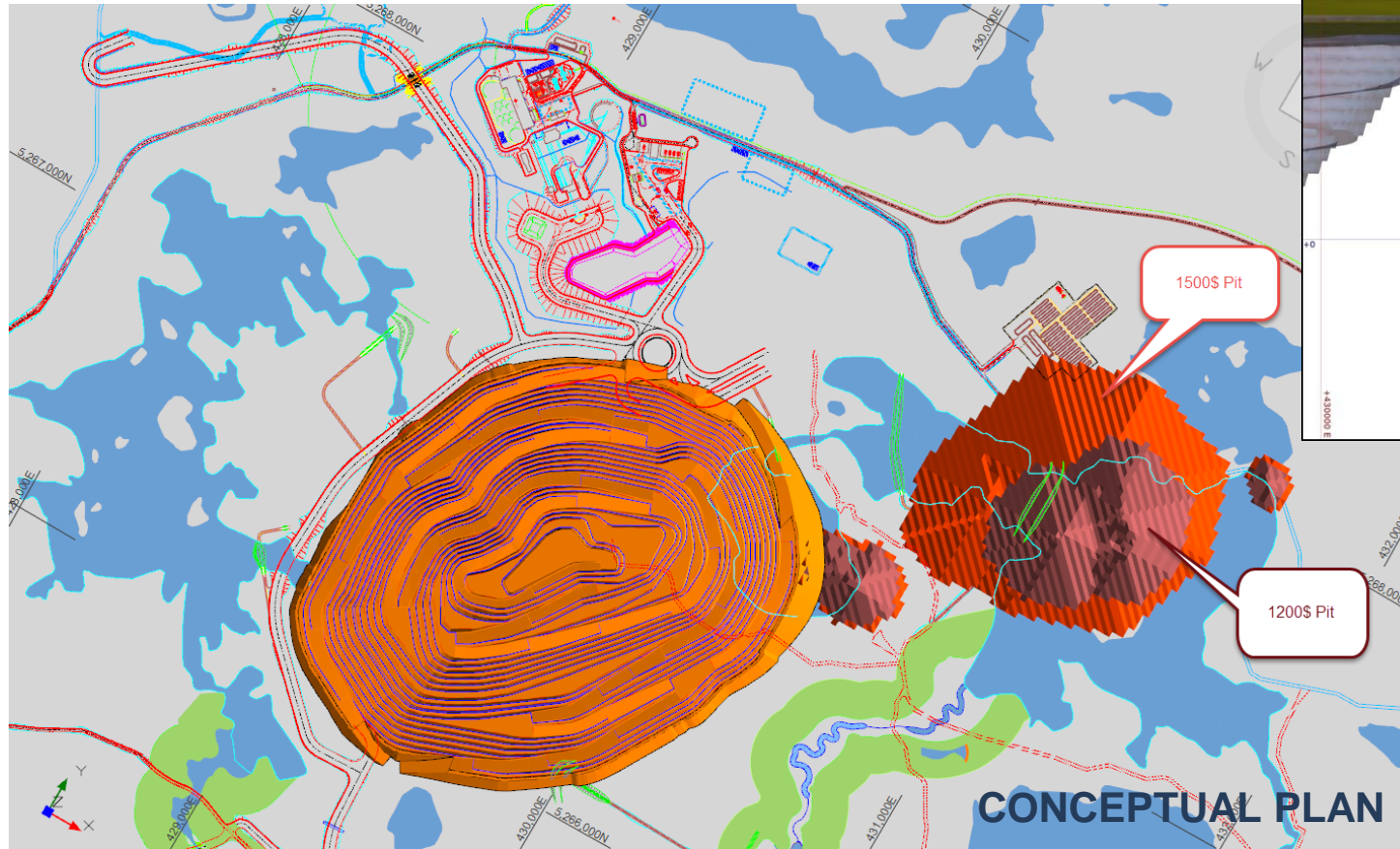
(100% Basis)

	Extended Case	Base Case
Mining: open pit	Mine Capacity: 70 Mtpa	Mine Capacity: 62 Mtpa
Process: crush, grind, gravity, leach, CIP	Mill Capacity: 13.1 Mtpa	Mill Capacity: 13.1 Mtpa
Mill Daily Throughput	36,000 tpd	36,000 tpd
LOM Average Annual Gold Production	372,000 oz	367,000 oz
LOM Recovered Gold	6.7 Moz	5.9 Moz
LOM Average Recovery Rate	91.8%	91.8%
Mine Life	18 years	16 years
LOM Average Total Cash Costs	\$606/oz	\$594/oz
LOM Average AISC	\$703/oz	\$694/oz
Average Grade	0.97 g/t Au	0.98 g/t Au
Average LOM Strip Ratio	2.6:1	2.4:1
Estimated capital expenditure		
Initial Capital	\$1,147 million	\$1,147 million
Sustaining Capital	\$589 million	\$527 million
Investment metrics		
Gold Price Assumption	\$1,250/oz	\$1,250/oz
After-tax NPV (6%)	\$905 million	\$795 million
After-tax IRR	15.4%	15.2%
Payback Period	4.4 years	4.4 years

Extended Mine Plan: The Extended Mine Plan adds two years to the Base Case Mine Plan mine life without expanding the footprint of the project. The Extended Mine Plan is supported by exploitation of the total Mineral Reserves, and recognizes that permit amendments may be required to raise the height of the Mine Rock Area and Tailings Management Facility.

...with exploration potential

GOSSELIN, YOUNG-SHANNON 1.5 KM NORTHEAST OF CÔTÉ



Gosselin Drill Hole Highlights

- GOS19-17: 342.5 metres grading 0.98 g/t Au
 - includes: 225.0 metres grading 1.34 g/t Au
- GOS19-24: 412.0 metres grading 1.28 g/t Au
 - includes: 221.4 metres grading 1.47 g/t Au

Exploration Target Potential*: 3 to 5 million ounces grading @ 0.7 to 1.2 g/t Au

* Refer to Exploration Target Potential cautionary language on slide 2.

Boto Gold – high margin investment in prospective district

OVERVIEW

Location	• Senegal, West Africa
Ownership	• 90% IAMGOLD / 10% Gov't of Senegal
Highlights	<ul style="list-style-type: none"> • Along same trend as B2Gold's Fekola Mine in Mali • Mining permit received December 23, 2019 for an initial period of 20 years¹

RESERVE AND RESOURCE¹

(100% Basis)

	Tonnes (000)	Grade (g/t)	Contained Ounces (000 Au)
Probable Reserves	29,040	1.7	1,593
Measured & Indicated *	40,567	1.6	2,033
Inferred *	8,196	1.8	469

* Inclusive of Reserves



OPTIMIZATION STUDY HIGHLIGHTS¹

(100% Basis)

Mining: open pit	Mine Capacity: 38 Mtpa
Process: crush, grind, gravity, leach, CIP (hard rock equivalent)	Mill Capacity: 2.7 Mtpa (HR equivalent)
LOM Average Annual Gold Production	130,000 oz
Average Annual Gold Production (years 1-6)	160,000 oz
LOM Average Recovery Rate	89.4%
Mine Life	11 years
LOM Average Total Cash Costs	\$778/oz
LOM Average AISC	\$842/oz
Average Grade	1.71 g/t Au
Average LOM Strip Ratio	7.5 : 1
Estimated capital expenditure	
Initial Capital	\$271 million
Sustaining Capital	\$68 million
Investment metrics	
Gold Price Assumption	\$1,350/oz
After-tax NPV (6%)	\$219 million
After-tax IRR	22.6%
Payback Period	3.2 years

¹ Refer to news release dated February 18, 2020

...with district potential

BOTO GOLD PROJECT, SENEGAL

- Announced the receipt of the exploitation permit for an initial period of 20 years.
- Completion of the completion of the Optimization Study¹, which confirms robust project economics.

DIAKHA-SIRIBAYA GOLD PROJECT, MALI

- Resource ounces increased by 57%² with a significant conversion to indicated ounces. Converted >700 koz to Indicated category

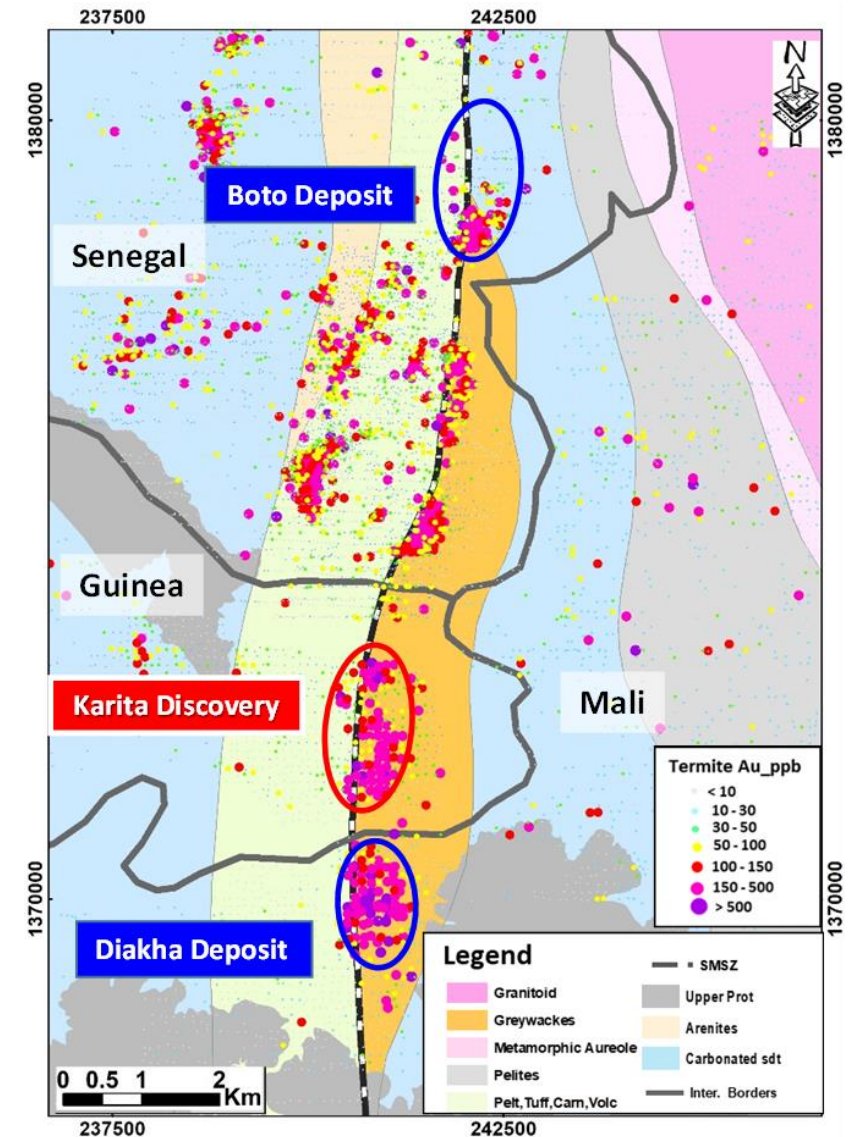
KARITA GOLD PROJECT, GUINEA

- Reported results from 2019 drilling program³, comprising 16 reverse circulation (RC) drill holes totalling 1,839 metres. Highlights included:
 - KRC19-006: 29.0 m grading 2.96 g/t Au
 - KRC19-009: 16.0 m grading 3.17 g/t Au
 - KRC19-011: 21.0 m grading 9.01 g/t Au

1 See IAMGOLD news release dated January 13, 2020

2 See IAMGOLD news release dated January 30, 2019

3 See IAMGOLD news release dated October 2, 2019



2 Shovel Ready Projects: de-risking in Q1 with non-field activities

Boto Gold, Senegal

- ~ **7% complete** on detailed project engineering
- Maintained our relationships with **stakeholders**
- Received the **exploitation permit**
- **Optimized** Project design
- Planning for preliminary phase of construction:
 - Access, site infrastructure
 - Supporting field work
 - Advancing detailed engineering of plant
- Ongoing **exploration** work
 - 3,400 m drilling completed

Côte Gold, Ontario, Canada

- ~ **56% complete** on detailed project engineering
 - Tailings facility
- First phase of camp construction
- Signed **Impacts and Benefits Agreement** with First Nations partners
- Reviewed the **resource**, confirmed **robust**
- **Reviewed and adjusted cost models**
- **Advanced permitting**
- **Tree clearing** - with **First Nations firm**
 - Largely complete before winding down
- Studying benefits of **incorporating technology**
- **Exploration** at Gosselin Zone
 - 4,700 m drilling completed

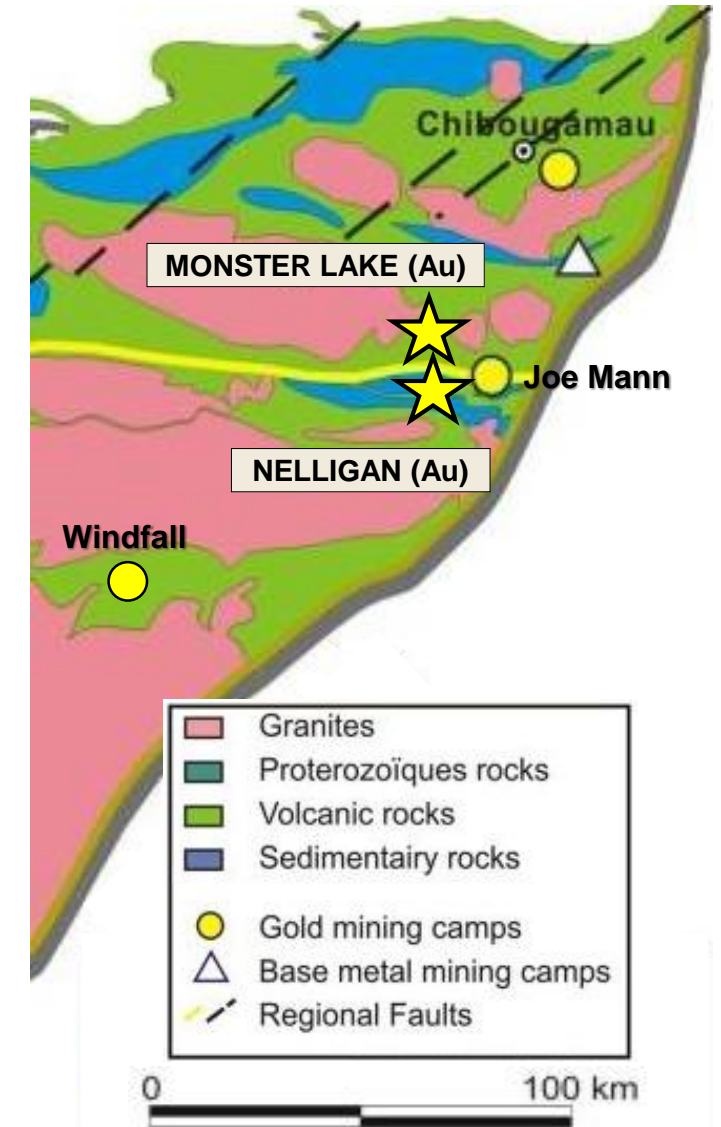
Resource stage in Canada

NELLIGAN (75% JV INTEREST)

- 15 kilometres south of Monster Lake
- Exercised option to increase undivided interest to 75% (from 51%), following completion of NI 43-101 Technical Report
- Completed initial resource estimate¹, comprising approximately 97 million tonnes grading 1.02 g/t Au for 3.2 million ounces, on a 100% basis
- Awarded *AEMQ Discovery of the Year*

MONSTER LAKE (75% JV INTEREST)

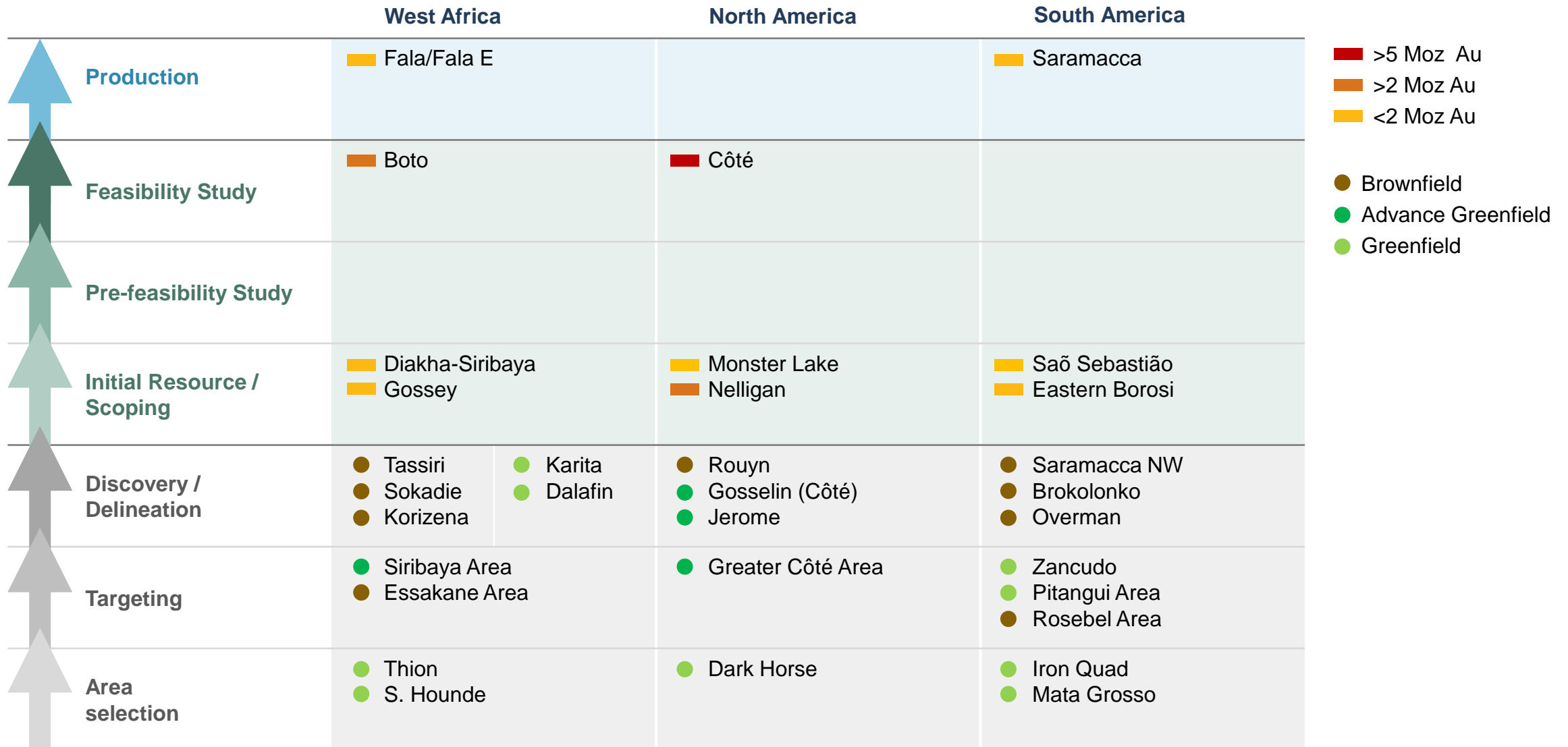
- Hosts an inferred resource¹ of 1.1 million tonnes grading 12.1 grams of gold per tonne for 433 thousand ounces, on a 100% basis.
- Announced positive drill results²:
 - 0.8 metres grading 357.0 g/t Au
 - 6.8 metres grading 3.85 g/t Au
 - Including 1.67 metres grading 6.43 g/t Au
 - 0.5 metres grading 133.0 g/t Au



¹ See IAMGOLD news release dated February 18, 2020

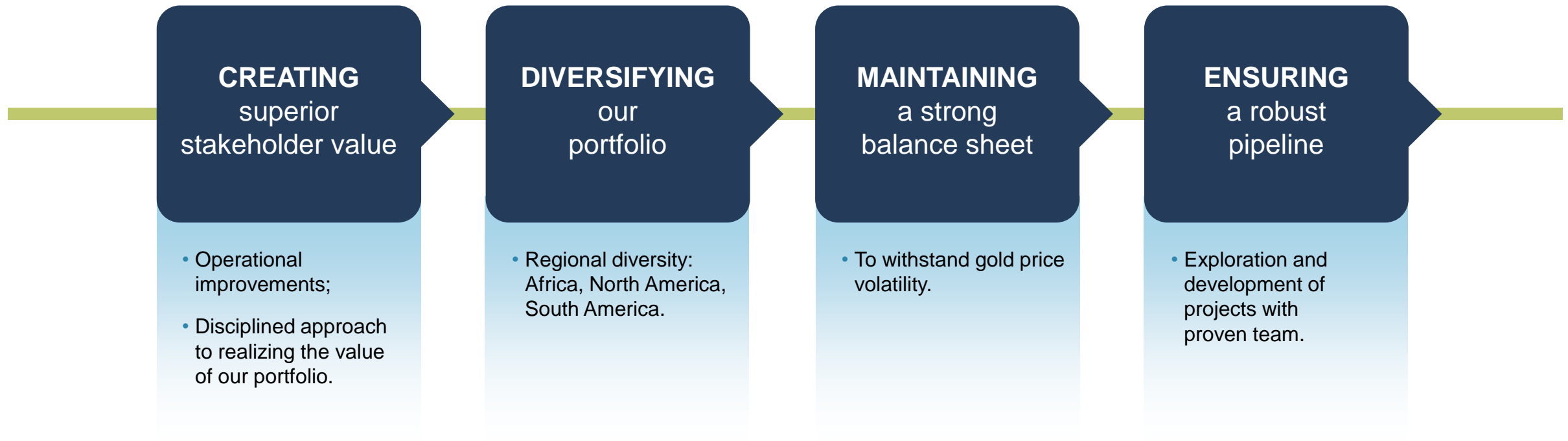
² See IAMGOLD news release dated July 23, 2019

Re-seeding the pipeline



IAMGOLD – building a cash flow pipeline

*Our vision is to be the **global leader** in generating superior value for our stakeholders through **accountable mining**.*



Appendix

2020 production and cost guidance

REFLECTING COVID-19 IMPACTS ON PRODUCTION AND COSTS

	UPDATED GUIDANCE ¹	PRIOR GUIDANCE ²
Essakane (000s oz)	350 – 370	365 – 385
Rosebel (000s oz)	250 – 270	245 – 265
Westwood (000s oz)	85 – 100	90 – 110
Total attributable production (000s oz)	685 – 740	700 – 760
Cost of sales ³ (\$/oz)	\$955 - \$995	\$900 – \$950
Total cash costs ^{4,5} (\$/oz)	\$920 - \$960	\$840 – \$890
All-in sustaining costs ^{4,5} (\$/oz)	\$1,195 - \$1,245	\$1,100 – \$1,150

¹ The revised outlook is based on 2020 full year assumptions with an average realized gold price of \$1,500 per ounce, U.S.\$ / Canadian \$ exchange rate of 1.40, € / U.S.\$ exchange rate of 1.12 and average crude oil price of \$35 per barrel.

² The previous outlook was based on 2020 full year assumptions with an average realized gold price of \$1,350 per ounce, U.S.\$ / Canadian \$ exchange rate of 1.30, € / U.S.\$ exchange rate of 1.15 and average crude oil price of \$62 per barrel.

³ Cost of sales, excluding depreciation, is on an attributable ounce sold basis (excluding the non-controlling interest of 10% at Essakane and 5% at Rosebel).

⁴ This is a non-GAAP measure. Refer to the non-GAAP performance measures section of this MD&A.

⁵ Consists of Essakane, Rosebel, and Westwood on an attributable basis.

2020 capex outlook

	UPDATED			PRIOR GUIDANCE		
\$millions	Sustaining ¹	Non-Sustaining ²	Total ³	Sustaining ¹	Non-Sustaining ²	Total ³
Essakane	\$40	\$80	\$120	\$40	\$100	\$140
Rosebel	\$60	\$55	\$115	\$55	\$60	\$115
Westwood	\$25	\$15	\$40	\$25	\$25	\$50
	\$125	\$150	\$275	\$120	\$185	\$305
Côté Gold	-	\$45	\$45	-	\$35	\$35
Boto Gold	-	\$25	\$25	-	\$30	\$30
Total (±5%)^{3,4,5}	\$125	\$220	\$345	\$120	\$250	\$370

1 Sustaining capital includes capitalized stripping of \$15 million for Rosebel.

2 Non-sustaining capital includes capitalized stripping of \$65 million for Essakane (previously \$80 million) and \$30 million for Rosebel (previously \$35 million).

3 Includes \$16 million of capitalized exploration and evaluation expenditures (previously \$11 million). Refer to the Exploration section of this MD&A.

4 Capitalized borrowing costs are not included.

5 In addition to the above capital expenditures, \$20 million in total principal lease payments are expected.

1 Sustaining capital includes capitalized stripping of \$15 million for Rosebel.

2 Non-sustaining capital includes capitalized stripping of \$80 million at Essakane, and \$35 million at Rosebel.

3 Includes \$11 million of capitalized exploration expenditures.

4 Capitalized borrowing costs are not included.

5 In addition to the above capital expenditures, \$20 million in total principal lease payments are expected.

2021 production and capital guidance*under review

HIGHER VOLUMES & GRADE AT ROSEBEL ♦ WESTWOOD RAMPS ♦ ESSAKANE PUSHBACKS OPEN UP ORE

	Full Year Guidance ¹
Essakane (000s oz)	355 – 385
Rosebel (000s oz)	305 – 335
Westwood (000s oz)	100 – 120
Total attributable production (000s oz)	760 – 840

<i>Capital Expenditures - \$ millions</i>	Total ²
Total	\$250

¹ Guidance is based on 2021 full year assumptions with an average gold price per ounce of \$ 1,350, average crude oil price per barrel of \$62, U.S. dollar value of the euro of \$1.15, and Canadian dollar value of the U.S. dollar of \$1.30.

² Capital referenced is only for current operations and does not include development projects.

Reducing input exposure through hedging

	2020	2021	2022	2023
Foreign Currency				
Canadian dollar contracts (millions of C\$)	191	252	210	120
Rate range (\$/C\$) ¹	1.30 - 1.3950	1.30 - 1.47	1.30 - 1.4750	1.30 - 1.4625
Hedge ratio	87%	81%	65%	36%
Commodities ²				
Brent oil contracts (barrels) ³	432	588	520	170
Contract price range (\$/barrel of crude oil)	50 - 65	54 - 65	50 - 65	50 - 65
Hedge ratio	77%	81%	75%	25%
WTI oil contracts (barrels) ³	366	456	450	348
Contract price range (\$/barrel of crude oil)	43 - 60	46 - 62	45 - 62	47 - 60
Hedge ratio	92%	72%	75%	51%

1. The Company executed Canadian dollar collar options, which consist of Canadian dollar call and put options within the given range in 2020 through 2023. The Company will recognize a gain from the difference between a lower market price and the Canadian dollar call strike price. The Company will incur a loss from the difference between a higher market price and the Canadian dollar put strike price.

2. The Company executed Brent and WTI collar options, which consist of Brent and WTI put and call options with strike prices within the given range in 2020 through 2023. The Company will incur a loss from the difference between a lower market price and the put strike price. The Company will recognize a gain from the difference between a higher market price and the call strike price.

3. Quantities of barrels are in thousands.

Gold mineral reserves

100% BASIS RESERVES

As at December 31, 2019	Proven			Probable		
	Tonnes (000s)	Grade (g/t)	Contained Ounces (000s)	Tonnes (000s)	Grade (g/t)	Contained Ounces (000s)
Rosebel¹	29,522	0.6	574	92,356	1.0	2,947
Saramacca¹	111	0.5	2	26,090	1.8	1,531
Essakane¹	—	—	—	124,713	1.0	3,805
Westwood¹	1,196	8.1	313	4,073	6.7	871
Sadiola²	—	—	—	59,571	2.0	3,860
Côte Gold³	139,253	1.0	4,640	93,747	0.9	2,644
Boto Gold¹	—	—	—	29,040	1.7	1,593
Total proven reserves	170,082	1.0	5,529			
Total probable reserves				429,770	1.3	17,251
Total proven and probable reserves				599,852	1.2	22,780

(1) Rosebel, Saramacca, Essakane, Westwood and Boto Gold mineral reserves have been estimated as of December 31, 2019 using a \$1,200/oz gold price

(2) Mineral reserves at Sadiola have been estimated as of December 31, 2019 using an average of \$1,200/oz gold price and have been estimated in accordance with the JORC code.

(3) Côte Gold Mineral Reserves have been estimated as of December 31, 2018 using a \$1,200/oz gold price.

Gold mineral reserves

ATTRIBUTABLE RESERVES

As at December 31, 2019	Proven			Probable		
	Tonnes (000s)	Grade (g/t)	Contained Ounces (000s)	Tonnes (000s)	Grade (g/t)	Contained Ounces (000s)
Rosebel (95%)¹	28,046	0.6	545	87,738	1.0	2,800
Saramacca (66.5%)¹	74	0.5	1	17,350	1.8	1,018
Essakane (90%)¹	—	—	—	112,242	1.0	3,425
Westwood (100%)¹	1,196	8.1	313	4,073	6.7	871
Sadiola (41%)²	—	—	—	24,498	2.0	1,583
Côte Gold (64.75%)³	90,166	1.0	3,004	60,701	0.9	1,712
Boto Gold (90%)¹	—	—	—	26,136	1.7	1,434
Total proven reserves	119,482	1.0	3,864			
Total probable reserves				332,738	1.2	12,842
Total proven and probable reserves				452,220	1.1	16,706

(1) Rosebel, Saramacca, Essakane, Westwood and Boto Gold mineral reserves have been estimated as of December 31, 2019 using a \$1,200/oz gold price

(2) Mineral reserves at Sadiola have been estimated as of December 31, 2019 using an average of \$1,200/oz gold price and have been estimated in accordance with the JORC code.

(3) Côte Gold Mineral Reserves have been estimated as of December 31, 2018 using a \$1,200/oz gold price.

Gold mineral resources^{1,2}

(Measured and indicated resources are inclusive of proven probable reserves)

100% BASIS RESOURCES

As at December 31, 2019	Measured			Indicated			Inferred		
	Tonnes (000s)	Grade (g/t)	Contained Ounces (000s)	Tonnes (000s)	Grade (g/t)	Contained Ounces (000s)	Tonnes (000s)	Grade (g/t)	Contained Ounces (000s)
Rosebel ³	35,276	0.6	698	247,210	0.9	7,397	64,191	0.9	1,785
Saramacca ³	111	0.5	2	27,509	2.0	1,752	11,689	0.7	270
Essakane ³	—	—	—	150,693	1.0	4,688	12,586	1.1	446
Gossey ⁴	—	—	—	10,454	0.9	291	2,939	0.9	85
Westwood ⁵	925	12.1	359	4,133	8.3	1,108	6,174	8.6	1,698
Sadiola ⁶	—	—	—	113,725	1.9	6,793	17,643	1.7	956
Côte Gold ³	152,100	1.0	4,720	213,400	0.8	5,480	189,600	0.6	3,820
Boto Gold ³	—	—	—	40,567	1.6	2,033	8,196	1.8	469
Nelligan ³	—	—	—	—	—	—	96,990	1.0	3,194
Monster Lake ⁴	—	—	—	—	—	—	1,110	12.1	433
Eastern Borosi ⁷	—	—	—	—	—	—	4,418	5.7	812
Pitangui ³	—	—	—	3,330	4.4	470	3,559	3.8	433
Diakha-Siribaya ⁴	—	—	—	18,031	1.3	744	23,179	1.6	1,176
Total measured resources	188,412	1.0	5,779						
Total indicated resources				829,052	1.2	30,756			
Total measured and indicated resources^{1,2}				1,017,464	1.1	36,535			
Total inferred resources²							442,273	1.1	15,577

(1) In mining operations, measured and indicated resources that are not mineral reserves are considered uneconomic at the price used for reserve estimations but are deemed to have a reasonable prospect of economic extraction.

(2) Although "measured resources", "indicated resources" and "inferred resources" are categories of mineralization that are recognized and required to be disclosed under Canadian regulations, SEC Industry Guide 7 does not recognize them. Disclosure of contained ounces is permitted under Canadian regulations; however, SEC Industry Guide 7 generally permits resources to be reported only as in place tonnage and grade. See "Cautionary Note to U.S. Investors Regarding Disclosure of Mineral Reserve and Mineral Resource Estimates".

(3) Rosebel, Saramacca, Essakane, Côte Gold, Boto Gold, Nelligan, and Pitangui mineral resources have been estimated as of December 31, 2019 using a \$1,500/oz gold price and have been estimated in accordance with NI 43-101.

(4) Gossey, Monster Lake, and Diakha-Siribaya mineral resources have been estimated as of December 31, 2018 using a \$1,500/oz gold price and have been estimated in accordance with NI 43-101.

(5) Westwood mineral resources have been estimated as of December 31, 2019 using a 5.5 g/t gold cut-off over a minimum width of 2.4 metres and have been estimated in accordance with NI 43-101.

(6) Mineral resources at Sadiola have been estimated as of December 31, 2019 using an average of \$1,400/oz gold price and have been estimated in accordance with the JORC code.

(7) Eastern Borosi mineral resources are disclosed as gold equivalent ounces calculated using the formula: $AuEq (g/t) = Au (g/t) + Ag (g/t) / 101.8$; and have been estimated as of December 31, 2018 using a \$1,500/oz gold price, and a \$23/oz silver price and in accordance with NI 43-101.

Underground resources are estimating using a cut-off grade of 2.0 g/t gold equivalent with a minimum width of 2.4m and open pit resources are estimated using a cut-off grade of 0.42 g/t gold equivalent over a 3.0m minimum width.

(8) Due to rounding, numbers presented throughout this document may not add up precisely to the totals.

Gold mineral resources^{1,2}

(Measured and indicated resources are inclusive of proven probable reserves)

ATTRIBUTABLE RESOURCES

As at December 31, 2019	Measured			Indicated			Inferred		
	Tonnes (000s)	Grade (g/t)	Contained Ounces (000s)	Tonnes (000s)	Grade (g/t)	Contained Ounces (000s)	Tonnes (000s)	Grade (g/t)	Contained Ounces (000s)
Rosebel (95%)³	33,512	0.6	663	234,850	0.9	7,027	60,981	0.9	1,696
Saramacca (66.5%)³	74	0.5	1	18,293	2.0	1,165	7,773	0.7	180
Essakane (90%)³	—	—	—	135,624	1.0	4,219	11,327	1.1	401
Gossey (90%)⁴	—	—	—	9,409	0.9	262	2,645	0.9	77
Westwood (100%)⁵	925	12.1	359	4,133	8.3	1,108	6,174	8.6	1,698
Sadiola (41%)⁶	—	—	—	46,627	1.9	2,785	7,233	1.7	392
Côte Gold (64.75%)³	98,485	1.0	3,056	138,177	0.8	3,548	122,766	0.6	2,473
Boto Gold (90%)³	—	—	—	36,510	1.6	1,830	7,376	1.8	422
Nelligan (75%)³	—	—	—	—	—	—	72,743	1.0	2,396
Monster Lake (75%)⁴	—	—	—	—	—	—	832	12.1	325
Eastern Borosi (51%)⁷	—	—	—	—	—	—	2,253	5.7	414
Pitangui (100%)³	—	—	—	3,330	4.4	470	3,559	3.8	433
Diakha-Siribaya (90%)⁴	—	—	—	16,228	1.3	669	20,861	1.6	1,058
Total measured resources	132,996	1.0	4,080						
Total indicated resources				643,180	1.1	23,084			
Total measured and indicated resources^{1,2}				776,176	1.1	27,164			
Total inferred resources²							326,525	1.1	11,965

(1) In mining operations, measured and indicated resources that are not mineral reserves are considered uneconomic at the price used for reserve estimations but are deemed to have a reasonable prospect of economic extraction.

(2) Although "measured resources", "indicated resources" and "inferred resources" are categories of mineralization that are recognized and required to be disclosed under Canadian regulations, SEC Industry Guide 7 does not recognize them. Disclosure of contained ounces is permitted under Canadian regulations; however, SEC Industry Guide 7 generally permits resources to be reported only as in place tonnage and grade. See "Cautionary Note to U.S. Investors Regarding Disclosure of Mineral Reserve and Mineral Resource Estimates".

(3) Rosebel, Saramacca, Essakane, Côte Gold, Boto Gold, Nelligan, and Pitangui mineral resources have been estimated as of December 31, 2019 using a \$1,500/oz gold price and have been estimated in accordance with NI 43-101.

(4) Gossey, Monster Lake, and Diakha-Siribaya mineral resources have been estimated as of December 31, 2018 using a \$1,500/oz gold price and have been estimated in accordance with NI 43-101.

(5) Westwood mineral resources have been estimated as of December 31, 2019 using a 5.5 g/t gold cut-off over a minimum width of 2.4 metres and have been estimated in accordance with NI 43-101.

(6) Mineral resources at Sadiola have been estimated as of December 31, 2019 using an average of \$1,400/oz gold price and have been estimated in accordance with the JORC code.

(7) Eastern Borosi mineral resources are disclosed as gold equivalent ounces calculated using the formula: $AuEq (g/t) = Au (g/t) + Ag (g/t) / 101.8$; and have been estimated as of December 31, 2018 using a \$1,500/oz gold price, and a \$23/oz silver price and in accordance with NI 43-101. Underground resources are estimating using a cut-off grade of 2.0 g/t gold equivalent with a minimum width of 2.4m and open pit resources are estimated using a cut-off grade of 0.42 g/t gold equivalent over a 3.0m minimum width.

(8) Due to rounding, numbers presented throughout this document may not add up precisely to the totals.



Indi Gopinathan

VP, Investor Relations & Corporate Communications

416-360-4743