



IAMGOLD[®]
CORPORATION



Côté Gold – Analyst Site Visit

September 15, 2018

Cautionary Statement

All information included in this presentation whether in narrative or chart form, including any information as to the Company's future financial or operating performance, and other statements that express management's expectations or estimates of future performance, other than statements of historical fact, constitute forward looking information or forward-looking statements and are based on expectations, estimates and projections as of the date of this presentation. Forward-looking statements contained in this presentation include, without limitation, statements with respect to: the Company's guidance for production, cash costs, all-in sustaining costs, depreciation expense, effective tax rate, and operating margin, capital expenditures, operations outlook, cost management initiatives, development and expansion projects, exploration, the future price of gold, the estimation of mineral reserves and mineral resources, the realization of mineral reserve and mineral resource estimates, the timing and amount of estimated future production, costs of production, permitting timelines, currency fluctuations, requirements for additional capital, government regulation of mining operations, environmental risks, unanticipated reclamation expenses, title disputes or claims and limitations on insurance coverage. Forward-looking statements are provided for the purpose of providing information about management's current expectations and plans relating to the future. Forward-looking statements are generally identifiable by, but are not limited to the, use of the words "may", "will", "should", "continue", "expect", "anticipate", "estimate", "believe", "opportunities", "intend", "plan", "possible", "suggest", "guidance", "outlook", "potential", "prospects", "seek", "targets", "strategy" or "project" or the negative of these words or other variations on these words or comparable terminology. Forward-looking statements are necessarily based upon a number of estimates and assumptions that, while considered reasonable by management, are inherently subject to significant business, economic and competitive uncertainties and contingencies. The Company cautions the reader that reliance on such forward-looking statements involve risks, uncertainties and other factors that may cause the actual financial results, performance or achievements of IAMGOLD to be materially different from the Company's estimated future results, performance or achievements expressed or implied by those forward-looking statements, and the forward-looking statements are not guarantees of future performance. These risks, uncertainties and other factors include, but are not limited to, changes in the global prices for gold, copper, silver or certain other commodities (such as diesel and electricity); changes in U.S. dollar and other currency exchange rates, interest rates or gold lease rates; risks arising from holding derivative instruments; the level of liquidity and capital resources; access to capital markets, and financing; mining tax regimes; ability to successfully integrate acquired assets; legislative, political or economic developments in the jurisdictions in which the Company carries on business; operating or technical difficulties in connection with mining or development activities; laws and regulations governing the protection of the environment; employee relations; availability and increasing costs associated with mining inputs and labour; the speculative nature of exploration and development, including the risks of diminishing quantities or grades of reserves; adverse changes in the Company's credit rating; contests over title to properties, particularly title to undeveloped properties; and the risks involved in the exploration, development and mining business. With respect to development projects, IAMGOLD's ability to sustain or increase its present levels of gold production is dependent in part on the success of its projects. Risks and unknowns inherent in all projects include the inaccuracy of estimated reserves and resources, metallurgical recoveries, capital and operating costs of such projects, and the future prices for the relevant minerals. Development projects have no operating history upon which to base estimates of future cash flows. The capital expenditures and time required to develop new mines or other projects are considerable, and changes in costs or construction schedules can affect project economics. Actual costs and economic returns may differ materially from IAMGOLD's estimates or IAMGOLD could fail to obtain the governmental approvals necessary for the operation of a project; in either case, the project may not proceed, either on its original timing or at all.

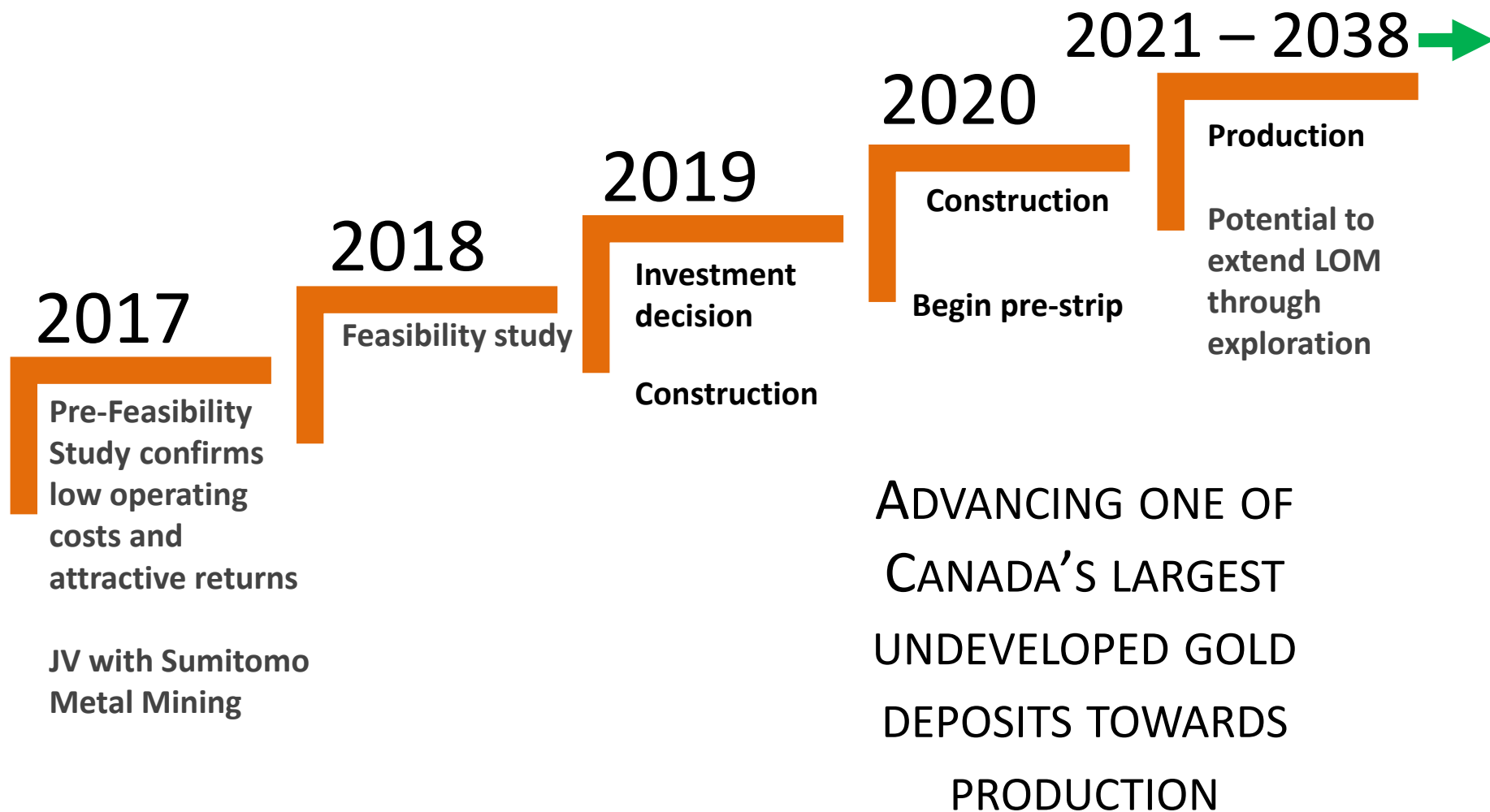
Exploration Target Potential: The potential quantity and grade of the exploration targets referred to are conceptual in nature and insufficient exploration work has been completed to define a mineral resource. The property will require significant future exploration to advance to a resource stage and there can be no certainty that the exploration target will result in a mineral resource being delineated. The exploration targets are consistent with similar deposits in the area, deposit models or derived from initial drilling results.

For a more comprehensive discussion of the risks faced by the Company, and which may cause the actual financial results, performance or achievements of IAMGOLD to be materially different from the company's estimated future results, performance or achievements expressed or implied by forward-looking information or forward-looking statements, please refer to the Company's latest Annual Information Form, filed with Canadian securities regulatory authorities at www.sedar.com, and filed under Form 40-F with the United States Securities Exchange Commission at www.sec.gov/edgar.shtml. The risks described in the Annual Information Form (filed and viewable on www.sedar.com and www.sec.gov/edgar.shtml, and available upon request from the Company) are hereby incorporated by reference into this presentation.

The Company disclaims any intention or obligation to update or revise any forward-looking statements whether as a result of new information, future events or otherwise except as required by applicable law.

All amounts in this presentation are expressed in U.S. dollars except as otherwise noted.

Côte Gold Development Project



➤ Key accomplishments since acquisition in 2012

- › Completed Prefeasibility Study and initiated Feasibility Study
- › Converted 5.9 Moz (100%) from resources to reserves
- › Positive decisions on Federal and Provincial Environmental Assessments
- › Completed transaction with Sumitomo Metal Mining

➤ Joint Venture with Sumitomo Metal Mining³

- › Sale of 30% interest in Côte Gold Project to SMM for \$195M
- › SMM is well funded with extensive technical expertise
- › Common interest in developing Côte and pursuing future opportunities

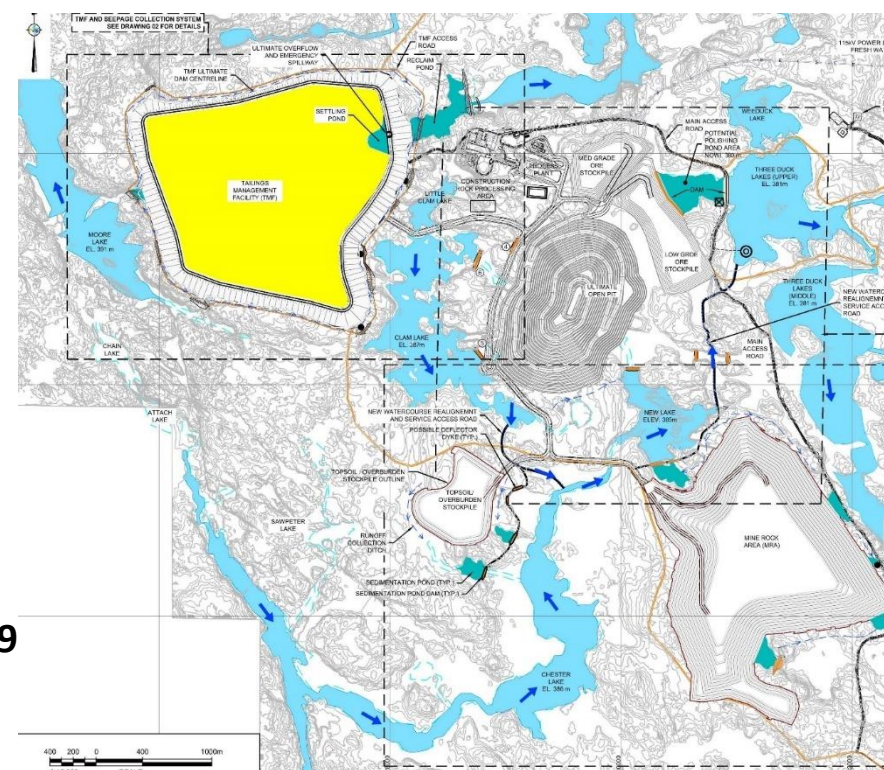
➤ PFS Demonstrates Economically Viable Project⁴

- › LOM average annual attributable production 207,000 oz
- › 17 year mine life
- › LOM average cash costs \$605/oz; AISC \$689/oz
- › After-tax NAV@5% \$703M, 14% IRR, 4.5 year payback
- › Initial CAPEX \$1,047M (100% basis)
- › Sustaining capital \$418M (100% basis)

➤ Feasibility Study expected to be completed H1'19

➤ Targeting commercial production H1'21

Attributable 64.75%	Tonnes (000)	Grade (g/t)	Contained Ounces (000 Au)
Probable Reserves ¹	126,961	0.9	3,837
Measured & Indicated ^{1,2}	182,058	0.9	5,204
Inferred ¹	49,515	0.5	797

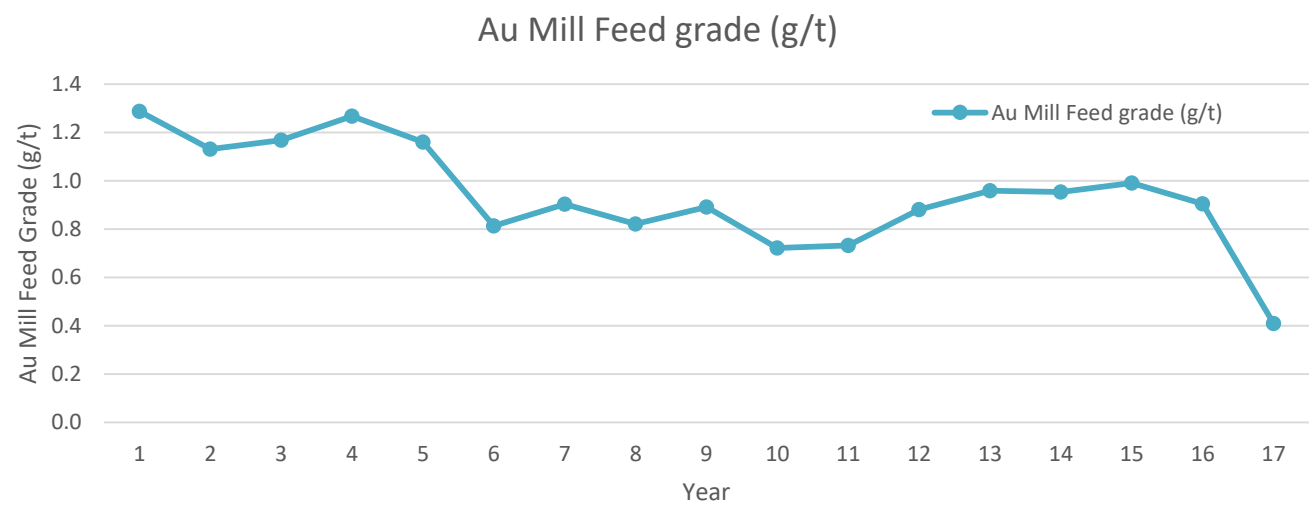
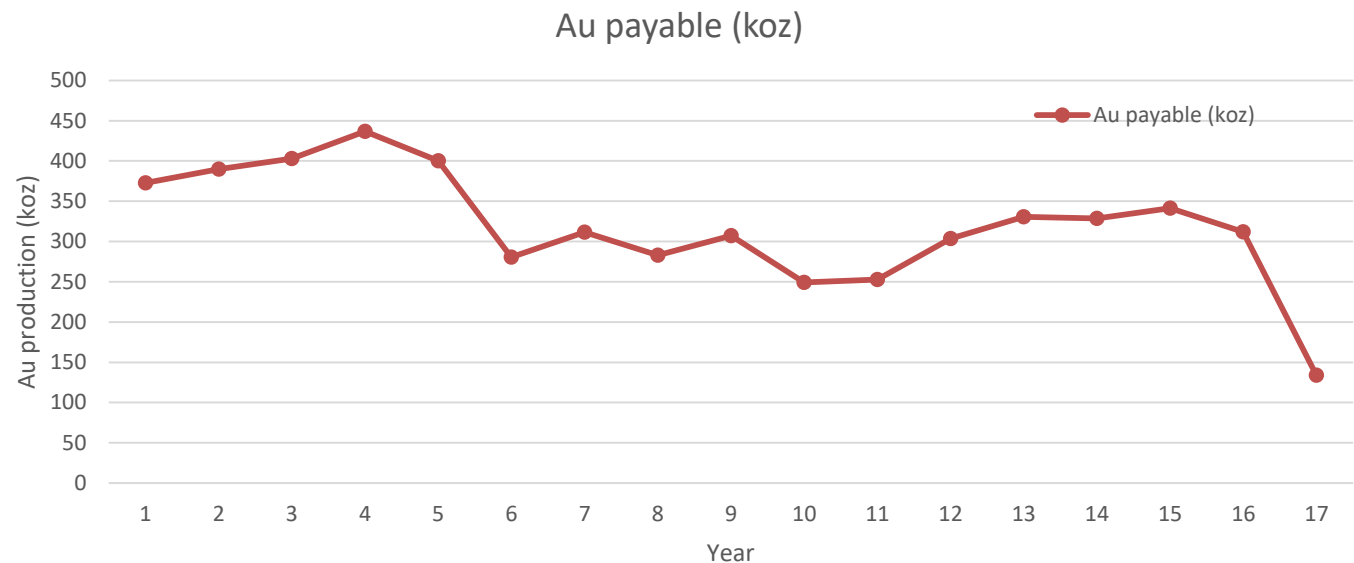


¹ See IAMGOLD news release dated February 12, 2018

² Inclusive of reserves

³ Refer to IAMGOLD news release dated June 20, 2017

⁴ Refer to IAMGOLD news release dated June 5, 2017



Key Changes from PFS

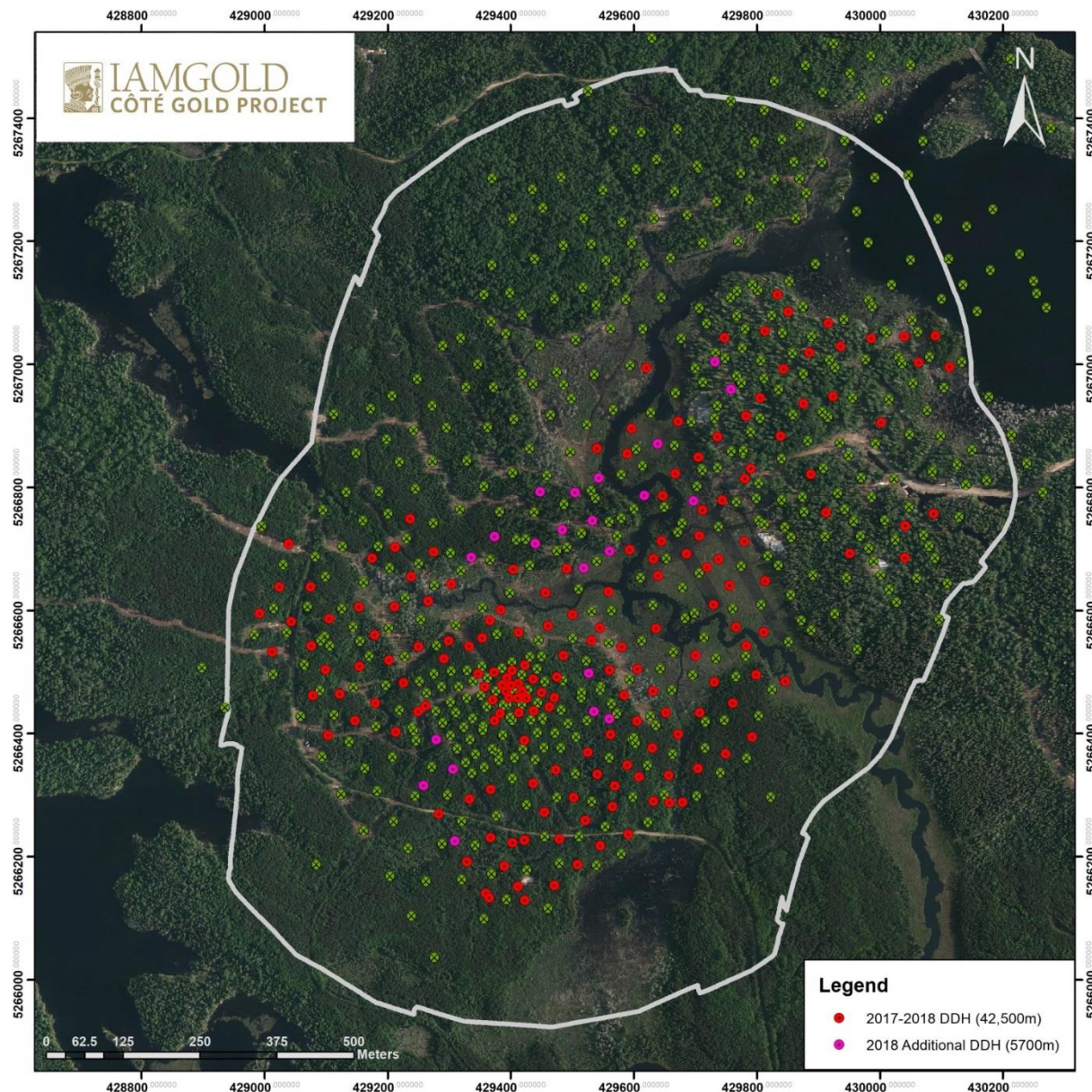
- Mill throughput increase of about 10%, 36 ktpd
- Automated truck haulage & production drilling as the Base Case
- Camp location modified
- Zero based design and cost estimates
- Various savings or capital deferment initiatives underway



Study Engineer

- Wood Group (formerly AMEC Foster Wheeler)
- Same consulting group used for Prefeasibility Study, including some of the same team members.

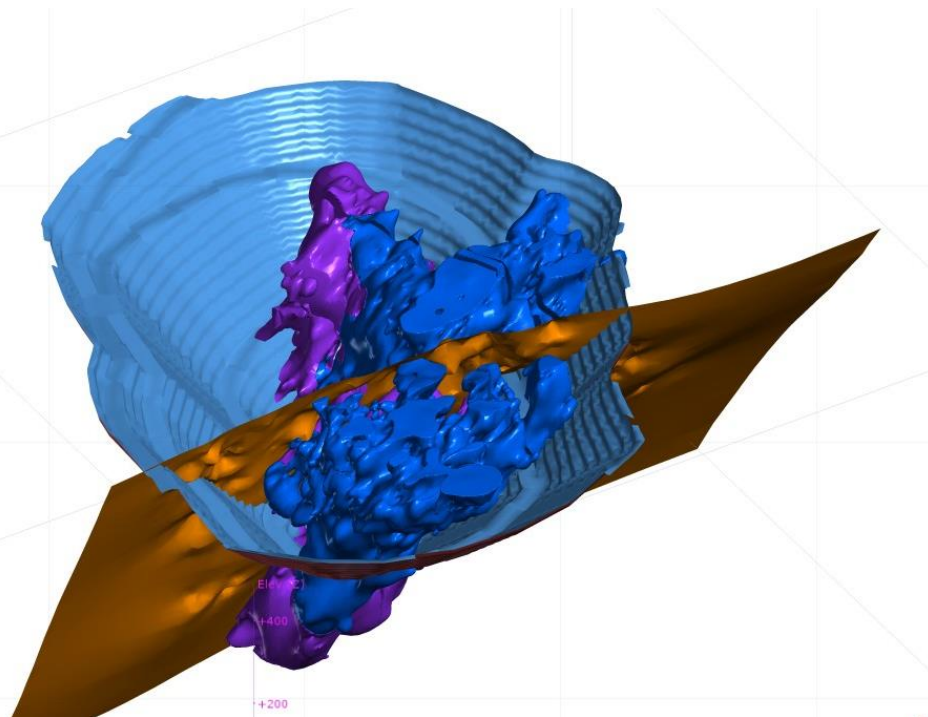
Feasibility Drill Program (Completed March 2018)



Objectives

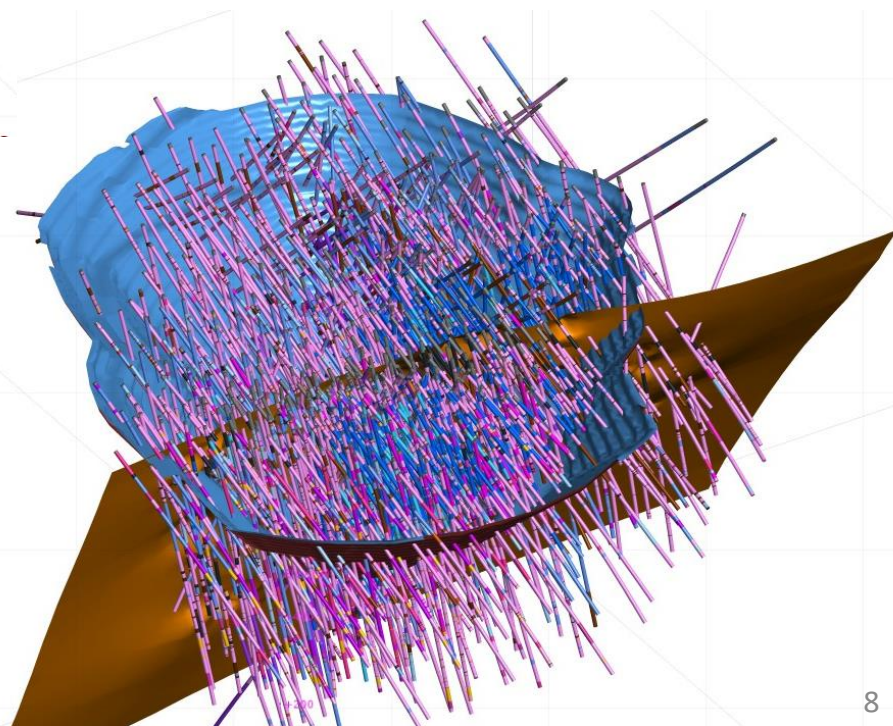
- Infill drilling-resource/reserve upgrade
- Grade distribution in starter-pit area
- Condemnation drilling for planned infrastructure
- Provide Geological information – Updated Geology Model
- Supply additional geochemical analyses for Deposit Geochemistry Model

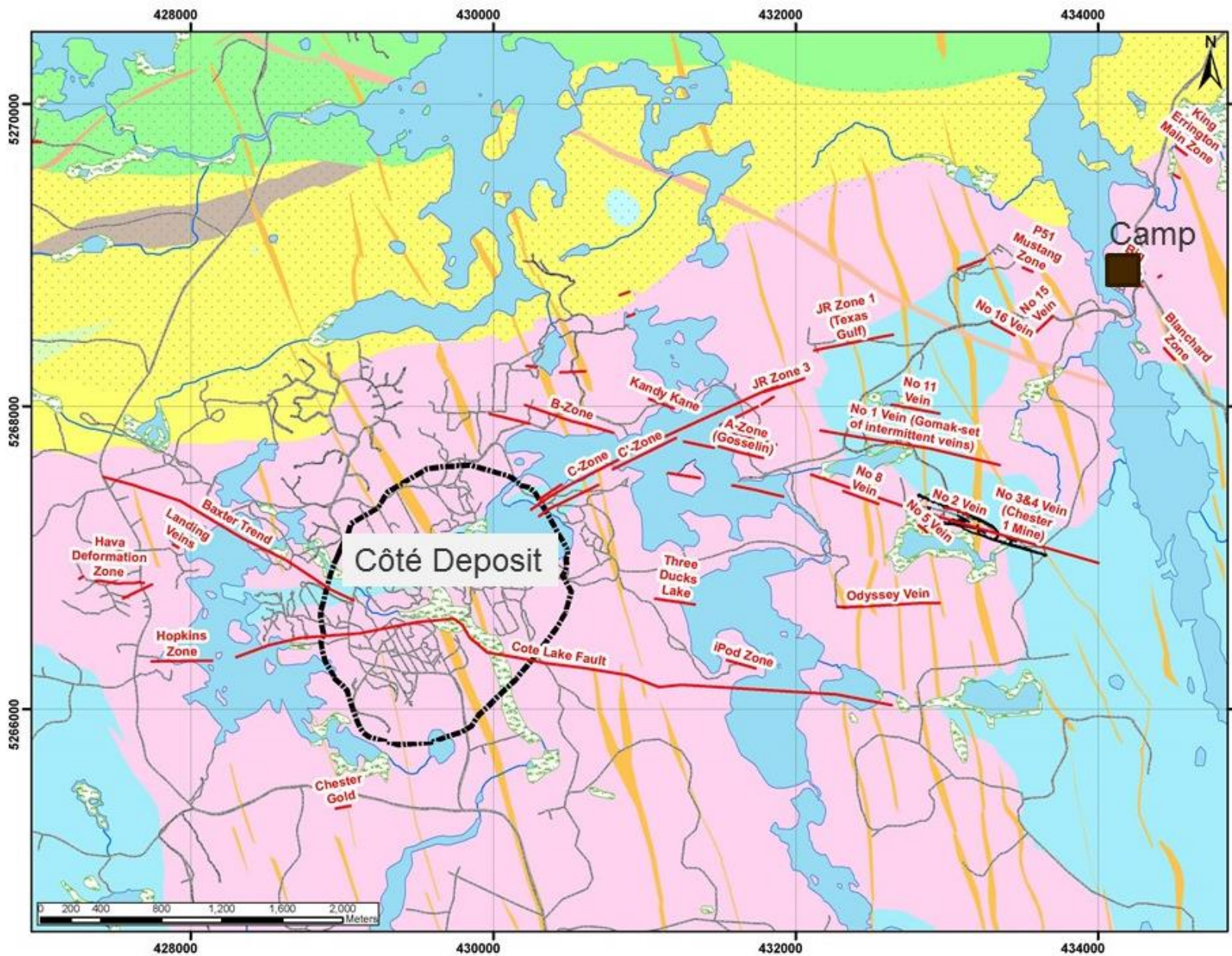
Geology / Alteration Model



713 core holes totalling over 300,000 m

assay database contains over 295,000 samples





Technology Strategy

Objectives

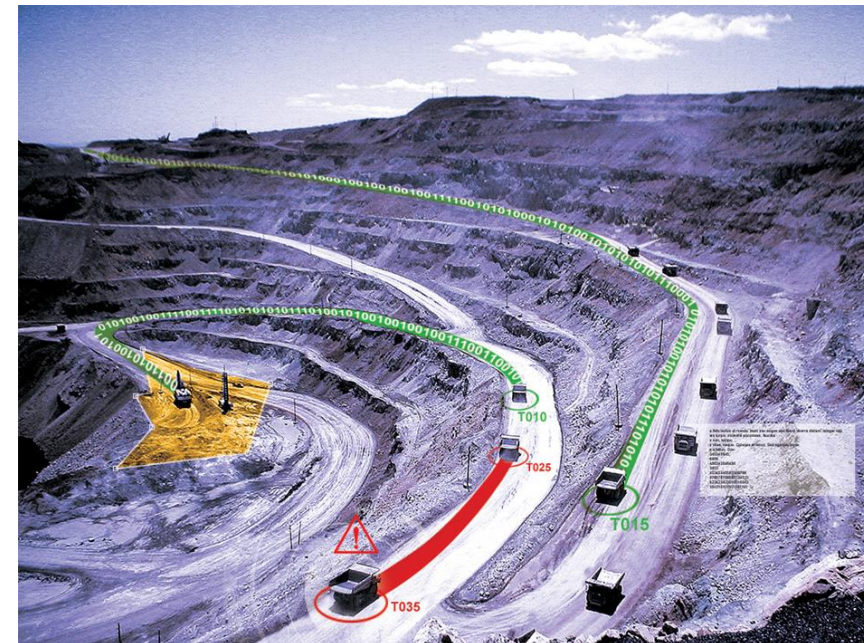
- Apply proven technologies to reduce risk to personnel and enhance project economics
- Develop core competencies around technology deployment and operations, sustain through continuous improvement
- Leverage advanced skills and competencies to build valuable capacity within our First Nations communities, our employee population and local educational institutions

Key Success Factors

- Established systems maintenance personnel and processes
- Strong quality control on road and communications infrastructure
- Disciplined delivery of safety controls and training programs for personnel operating within autonomous environment

Technology Status

- Committed to Autonomous Haulage and Drilling systems as part of the execution plan
- Completed four benchmarking visits within successful AHS operations
- Strong interest by technology providers with proven offerings
- Hired technology consultant to support design, estimating, procurement and operational readiness efforts



Plant

- Increased plant capacity following optimization to 36ktpd
- Decreased footprint and volume by approximately 25% from PFS
- Optimized plant configuration and applied zero based design

Power

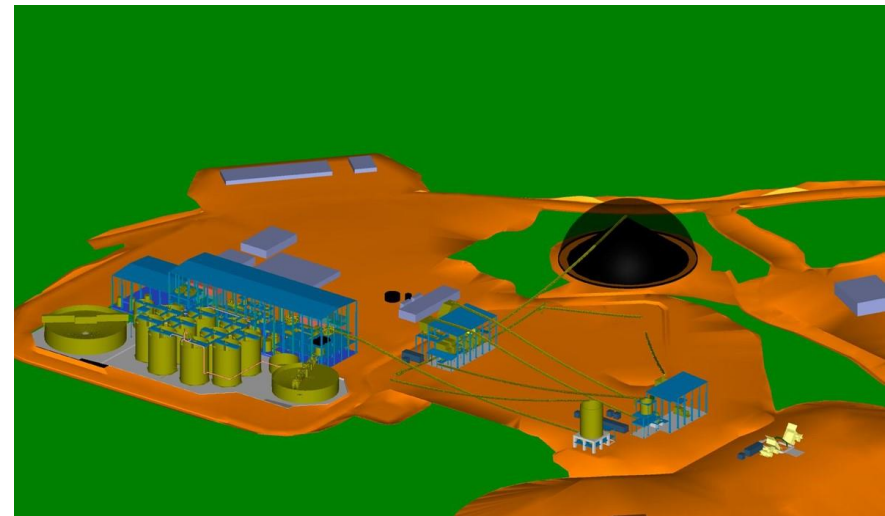
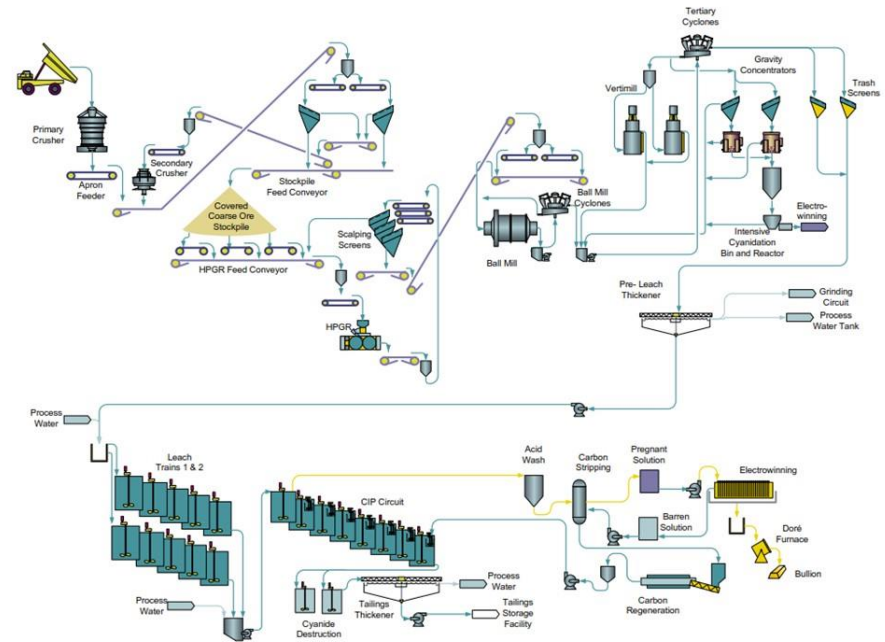
- Supplied from HONI T2R line Shining Tree – 44km connection – aligned with HONI Sustaining Projects
- Applications and work with IESO, HONI and OEB aligned

Infrastructure

- Maintenance garage, warehouse and administration complex
- Accommodations complex - Construction and Operations phases
- Fuel and lube bay
- Explosives manufacturing (emulsion plant) and storage facilities

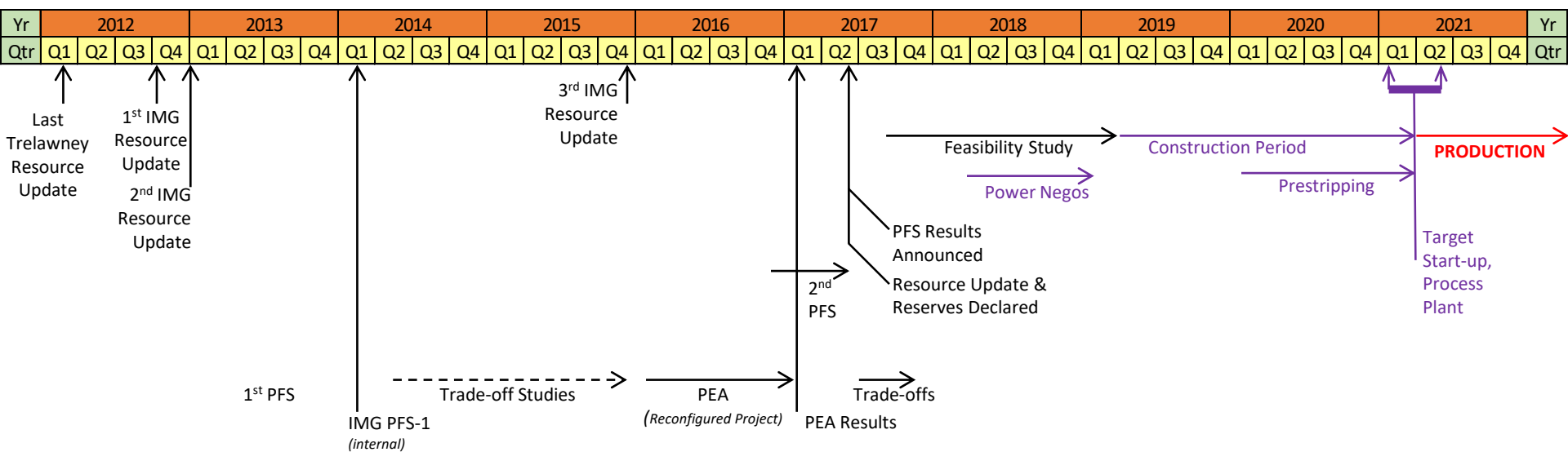
Construction

- General laydown areas and temporary storage facilities as well as strategy for use during construction
- Early contractor involvement





Côte Gold Development Timeline - Technical





IAMGOLD[®]
CORPORATION

Ken Chernin

VP, Investor Relations
T: 416-360-4743

Laura Young

Director, Investor Relations
T: 416-933-4952

Martin Dumont

Senior Analyst, Investor Relations
T: 416-933-5783