



IAMGOLD[®]
CORPORATION

BMO Capital Markets
26th Global Metals & Mining Conference
February 28 – March 1, 2017

STEVE LETWIN, PRESIDENT & CEO

Empowering People,
Extraordinary Performance

| TSX: IMG | NYSE: IAG |

Cautionary Statement

All information included in this presentation, including any information as to the Company's future financial or operating performance, and other statements that express management's expectations or estimates of future performance, other than statements of historical fact, constitute forward looking information or forward-looking statements and are based on expectations, estimates and projections as of the date of this presentation. Forward-looking statements contained in this presentation include, without limitation, statements with respect to: the Company's guidance for production, cash costs, all-in sustaining costs, depreciation expense, effective tax rate, and operating margin, capital expenditures, operations outlook, cost management initiatives, development and expansion projects, exploration, the future price of gold, the estimation of mineral reserves and mineral resources, the realization of mineral reserve and mineral resource estimates, the timing and amount of estimated future production, costs of production, permitting timelines, currency fluctuations, requirements for additional capital, government regulation of mining operations, environmental risks, unanticipated reclamation expenses, title disputes or claims and limitations on insurance coverage. Forward-looking statements are provided for the purpose of providing information about management's current expectations and plans relating to the future. Forward-looking statements are generally identifiable by, but are not limited to the, use of the words "may", "will", "should", "continue", "expect", "anticipate", "estimate", "believe", "opportunities", "intend", "plan", "possible", "suggest", "guidance", "outlook", "potential", "prospects", "seek", "targets", "strategy" or "project" or the negative of these words or other variations on these words or comparable terminology. Forward-looking statements are necessarily based upon a number of estimates and assumptions that, while considered reasonable by management, are inherently subject to significant business, economic and competitive uncertainties and contingencies. The Company cautions the reader that reliance on such forward-looking statements involve risks, uncertainties and other factors that may cause the actual financial results, performance or achievements of IAMGOLD to be materially different from the Company's estimated future results, performance or achievements expressed or implied by those forward-looking statements, and the forward-looking statements are not guarantees of future performance. These risks, uncertainties and other factors include, but are not limited to, changes in the global prices for gold, copper, silver or certain other commodities (such as diesel and electricity); changes in U.S. dollar and other currency exchange rates, interest rates or gold lease rates; risks arising from holding derivative instruments; the level of liquidity and capital resources; access to capital markets, and financing; mining tax regimes; ability to successfully integrate acquired assets; legislative, political or economic developments in the jurisdictions in which the Company carries on business; operating or technical difficulties in connection with mining or development activities; laws and regulations governing the protection of the environment; employee relations; availability and increasing costs associated with mining inputs and labour; the speculative nature of exploration and development, including the risks of diminishing quantities or grades of reserves; adverse changes in the Company's credit rating; contests over title to properties, particularly title to undeveloped properties; and the risks involved in the exploration, development and mining business. With respect to development projects, IAMGOLD's ability to sustain or increase its present levels of gold production is dependent in part on the success of its projects. Risks and unknowns inherent in all projects include the inaccuracy of estimated reserves and resources, metallurgical recoveries, capital and operating costs of such projects, and the future prices for the relevant minerals. Development projects have no operating history upon which to base estimates of future cash flows. The capital expenditures and time required to develop new mines or other projects are considerable, and changes in costs or construction schedules can affect project economics. Actual costs and economic returns may differ materially from IAMGOLD's estimates or IAMGOLD could fail to obtain the governmental approvals necessary for the operation of a project; in either case, the project may not proceed, either on its original timing or at all.

For a more comprehensive discussion of the risks faced by the Company, and which may cause the actual financial results, performance or achievements of IAMGOLD to be materially different from the company's estimated future results, performance or achievements expressed or implied by forward-looking information or forward-looking statements, please refer to the Company's latest Annual Information Form, filed with Canadian securities regulatory authorities at www.sedar.com, and filed under Form 40-F with the United States Securities Exchange Commission at www.sec.gov/edgar.shtml. The risks described in the Annual Information Form (filed and viewable on www.sedar.com and www.sec.gov/edgar.shtml, and available upon request from the Company) are hereby incorporated by reference into this presentation.

The Company disclaims any intention or obligation to update or revise any forward-looking statements whether as a result of new information, future events or otherwise except as required by applicable law.

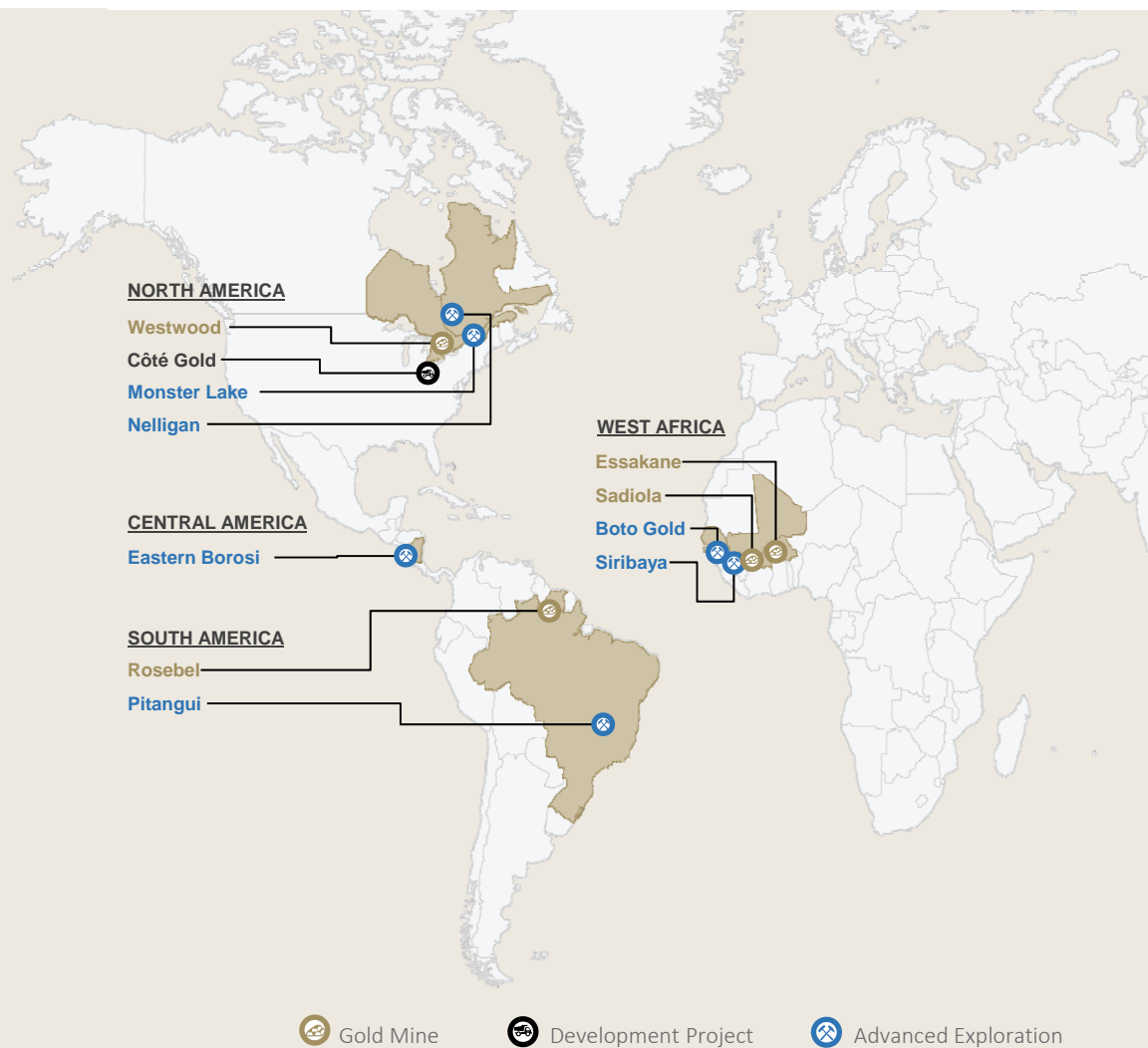
Why Invest in IAMGOLD?

- **Established gold producer with industry leading growth profile**
- **Geographically diversified in three prolific gold producing regions**
- **Optimizing all operations and lowering cost structure**
- **Exploration program driving greenfield and brownfield growth**
- **Balance sheet strength underpins financial flexibility**
- **“Zero harm” focus for safety, environment and communities**
- **Skilled management team with track record of on time and on budget project management**

Our Vision

Growing intermediate gold producer in established mining camps

- Become a 1 million ounce gold producer by 2020
 - 20-25% organic production growth
- Lower AISC to \$900 to \$950 by 2020
 - Targeting 10-15% reduction
- Extending mine lives
 - Add 1 million ounces of Reserves and Resources by 2020, net of mining depletion
- Leverage peer-leading organic growth pipeline to extend beyond 2020 targets



Our Strategy

Five Pillars of IAMGOLD Strategy

Optimizing all operations

- Focus on cost containment, efficiencies and productivity improvements
- Mine site management empowered and delivering positive results

Focus on organic growth opportunities

- Brownfield exploration near existing mine sites
- Expansion opportunities at existing operations

Position company for long-term growth

- Opportunistic M&A
- Greenfield exploration providing longer-term optionality

Prudent financial management and flexibility

- Maintain one of the strongest balance sheets in the industry
- Focus on 3C's: Cash, Costs and Capital allocation

Industry leading CSR performance

- Maintain best in class safety standards
- Ongoing support of company-wide CSR initiatives

Optimizing Operations

Essakane – Burkina Faso (90%)

2016 Accomplishments

- Commissioning of intensive leach reactor to further improve recoveries in Q2
- Geometallurgical study to improve gold recoveries from ore with high graphite content due in Q2 2017
- Carbon fines treatment plant commissioned in Q2, which will reduce gold inventory going forward

2017 Optimization Initiatives

- Continue to optimize production
- Lower unit costs and increase mining and milling efficiencies at higher proportions of hard rock in the mill feed
- Optimization of the grinding circuit to maximize throughput
- Addition of oxygen plant to improve recoveries
- Assessing potential for solar plant at site
- Evaluating heap leach opportunities

2017 Guidance

Attributable gold production	370,000 to 380,000
Capex	\$90M
Sustaining	\$85M
Growth	\$5M
LOM	2023+



Rosebel – Suriname (95%)

2016 Accomplishments

- Major mill improvements:
 - Commissioning of secondary crusher to increase the grinding capacity of hard rock;
 - Installation of a power flex drive to increase torque capacity in the SAG mill;
 - New liner design in the grinding circuit
- Ongoing improvements to metallurgical circuit targeting elution, carbon management and gravity to help reduce gold inventory in circuit

2017 Optimization Initiatives

- Continue to optimize mining and milling capacity by improving blast fragmentation
- Improve loading and hauling efficiency, while reducing costs through improved fuel and tire management
- Grade improvements expected in hand with hard rock levels, approaching 70% in 2017 compared to 33% in 2016

2017 Guidance

Attributable gold production	295,000 to 305,000
Capex	\$70M
Sustaining	\$65M
Growth	\$5M
LOM	2022+



Westwood – Quebec (100%)

2016 Accomplishments

- Completed nearly 25 km of underground development – averaging 74 meters per day
- Underground development continuing to open access to new mining areas
- Nearly doubled year over year reserves, net of mining depletion

2017 Optimization Initiatives

- Production expected to double from 2016 levels
- Operating at commercial levels in 2017 from 3 of 5 planned mining blocks, including zone where remedial work was completed in 2016
- Focus on development activities in the production and expansion blocks
- Expect to deliver on 2017 production and cost targets, while ramping up to full production by 2019
- Targeting 17 km of lateral development and 3 km of vertical development

2017 Guidance

Attributable gold production	115,000 to 125,000
Capex	\$65M
Sustaining	\$20M
Growth	\$45M
LOM	2033+



Sadiola – Mali (41%)

2016 Accomplishments

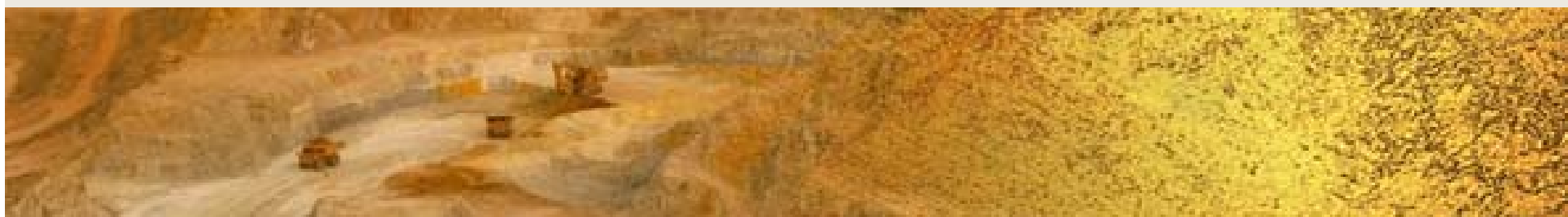
- Consistent year over year production in 2016
- Based on exploration success, extended mine life to 2018
- Alignment with partner AGA to move Sulphide Project forward
- Project economics were refined and optimization study was completed

2017 Optimization Initiatives

- Intend to commence construction, pending Malian government renewing construction and operating permits; power agreement and fiscal terms
- Expect to continue mining oxides into early 2018 and processing oxides into early 2019

2017 Guidance

Attributable gold production	65,000 to 75,000
Capex	\$15M
Sustaining	\$5M
Growth	\$10M
LOM (Oxides only)	2019
LOM (with SSP)	2028



Organic Growth Opportunities

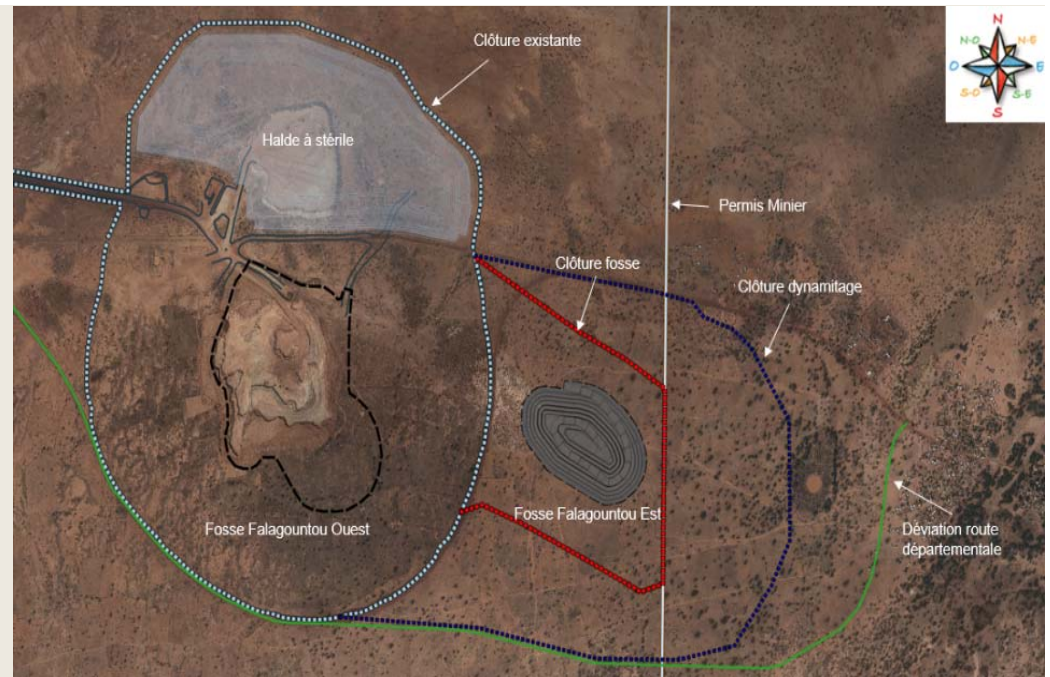
Essakane – Falagountou East Is Being Fast-Track

Project Highlights

- Falagountou East has potential to provide additional low-cost, near-surface, high-grade saprolite ore
- Drilling program has confirmed additional short-term saprolite and mineral resources
- The immediate north extension is actively mined by artisanal miners and previous historic drilling shows good intercepts

2017 Objectives

- Falagountou East is being fast-tracked
- Project has been presented to government officials and to Falagountou Mayor; approval process underway
- Deposit is covered by existing mining permits at Essakane
- Exploration drilling will continue in 2017 to expand limits of the ore body



Rosebel – Focus on Saramacca and Saddle Zones

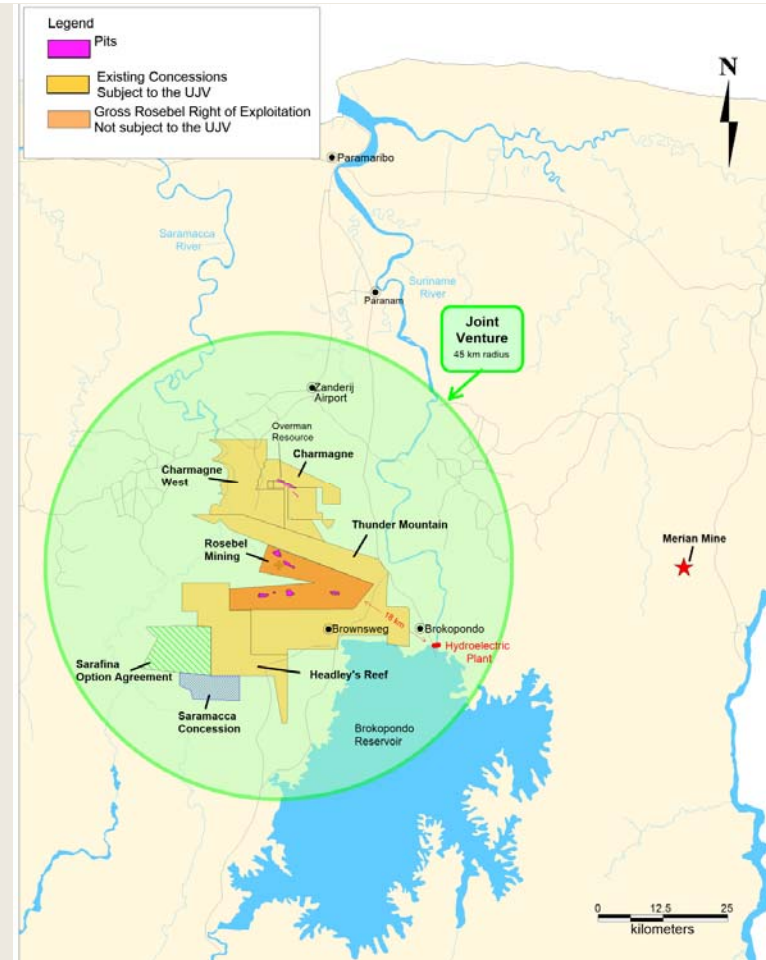
2016 Achievements

- Saramacca completed phase 1 drilling program, and highlights include*:
 - 4.31 g/t Au over 101.0 metres
 - 5.22 g/t Au over 46.5 metres
 - 3.98 g/t Au over 78.0 metres
- Confirmed presence of multiple mineralized structures within ~2 km long and 600 m wide corridor
- Mineralization remains open along strike and at depth
- Preliminary drilling carried out in Saddle Zones between historic pits to evaluate opportunities for near-mill, low-stripping, soft ore

2017 Objectives

- Saramacca 15,000 m infill drilling program focused on completing 50 x 50 m drilling pattern, to further define and confirm continuity of key mineralized structures
- Results to be included in deposit model to support NI 43-101 compliant resource estimate in Q3 2017
- Continue Saddle Zones exploration to identify new oxide reserves in 1 to 2 year timeframe

* See news release dated February 13, 2017



Sadiola – Sulphide Expansion Project

2017 Objectives

- IAMGOLD has secured board approval and intends to move ahead with project
- Project partner is aligned with development scenario
- Go forward is conditional upon approval of Malian government to renew construction and operating permits, power agreement and fiscal terms relating to project

Sulphide Expansion Project

2015 Technical Report¹

Strip Ratio	3.9
Max. Throughput (Mtpa)	7.2
Recoverable Gold (Moz/LOM)	3.2
Mine Life (yr)	10
Cash Cost (\$/oz)	\$735
AISC (\$/oz)	\$816
Initial Capital (\$M)	\$379
After-tax IRR	16%

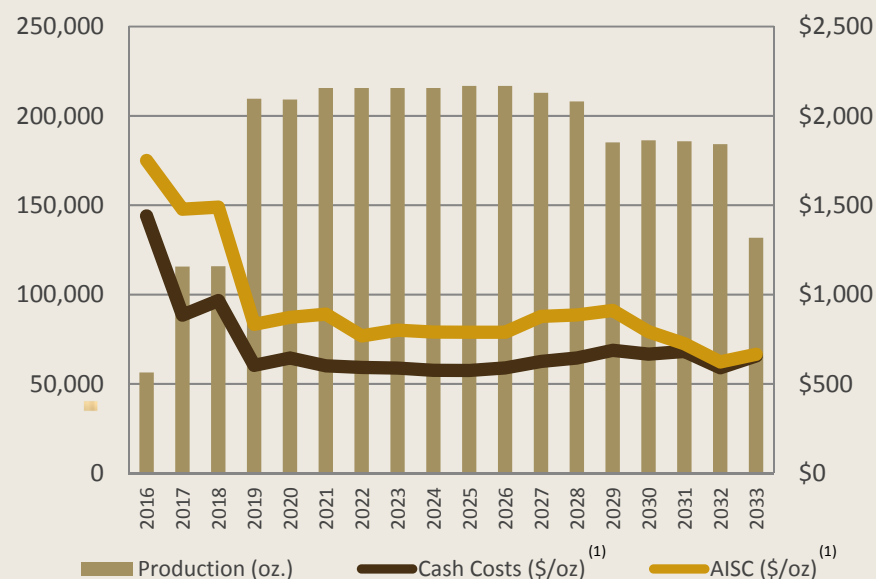
1. On 100% basis, using 7.2 Mtpa scenario in Sadiola's 2015 43-101 Technical Report. See report for more details regarding price assumptions and technical disclosure.

Westwood – Exceptional Pace of Development Driving Ramp-up

2017 Objectives

- 2017 exploration drill programs will be increased to 110 km from 78 km in 2016, to support operational ramp up to full production; and to provide a 5 year reserve base
- Exploration to target increased resources below 180 level
- Production in 2017 to come from Blocks 1 and 2
- Re-opening of 104 mining area
- Infrastructure and development in Blocks 3 and 4
- Westwood has significant resource potential undrilled in existing mining blocks, at depth and to the west
- Development completed in 2016 and scheduled for 2017 is essential to ramp-up and expansion plans
- Commissioning of new mining blocks increases operational flexibility, efficiency and reliability

Westwood LOM – Production & Costs Forecast



1. This is a non-GAAP measure. Refer to the non-GAAP performance measures section of the MD&A for more information.



Long-Term
Growth

Peer-Leading Organic Growth Pipeline

Côte Gold

- One of Canada's largest undeveloped gold projects
- PFS to be published in Summer 2017

Boto Gold

- Expanding Malikoundi deposit in Senegal
- Evaluation studies ongoing

Pitangui

- Sao Sebastiao deposit in Brazil is an advanced greenfield exploration project
- Ongoing exploration and advancing evaluation studies

Loma Largo

- Project in Ecuador, operated by INV Metals, IAMGOLD owns ~36%
- Strategic investment provides optionality



Monster Lake

- Quebec; 50-50 JV with TomaGold
- High-grade vein deposit in prolific Abitibi Greenstone Belt

Nelligan

- Quebec, 15km from Monster Lake, earn-in option with Vanstar Mining
- New greenfield discovery

Eastern Borosi

- Nicaragua; option agreement with Calibre Mining
- Targeting high-grade epithermal gold-silver veins

Diakha-Siribaya

- Mali, consolidating ownership in a 1 M ounce plus discovery stage project
- Expanding resources

Opportunity to exceed 2020 targets with existing organic growth projects

Côte Gold – Organic Growth Optionality in World-Class Camp

Project Highlights

- One of Canada's largest undeveloped gold deposits
- Located in a prolific mining region near Timmins, Ontario
- Positive PEA and government approval of environmental assessment
- Additional drilling, engineering studies and environmental studies ongoing
- Exploration continuing on 500 sq. km. land package to develop and assess targets
- Pre-feasibility study expected in summer 2017

Key accomplishments since IAMGOLD acquisition

- Indicated resources have increased by ~7.4Moz
- Average grade of indicated resources has increased by 10%
- Pit constrained mineralization defined over strike length of 1,300 metres, widths between 100-300 metres

1. The PEA represents a conceptual study of the potential viability of the mineral resources that have been defined to date on the Project, where the accuracy of the cost estimates is -30%/+50%.

Project Economics and Key Parameters^{1, 2}

	Years 1–3	60 Mtpa
Mining Capacity	Years 4–14	50 Mtpa
	Years 15–18	15 Mtpa
Milling Capacity	29,000 t/d	
LOM Average Annual Gold Production	302,000 oz.	
Targeted Recovery Rate	91.9%	
Mine Life	21 years	
LOM Average Total Cash Costs	\$564/oz	
LOM Average AISC	\$686/oz	
Average Grade	0.97 g/t Au	
Average LOM Strip Ratio	2.66	
Estimated Capital Expenditures (millions)		
Initial Capital	\$1,031	
Sustaining Capital	\$440	
Closure Costs	\$40	
Gold Price Assumption used in financial analysis	\$1,200/oz	
Pre-tax NPV (6%) (millions)	\$851	
Pre-Tax IRR	15.4%	
After-tax NPV (6%) (millions)	\$543	
After-tax IRR	12.9%	
Payback Period	5.2 years	

(2: See news release dated Feb. 10, 2017)

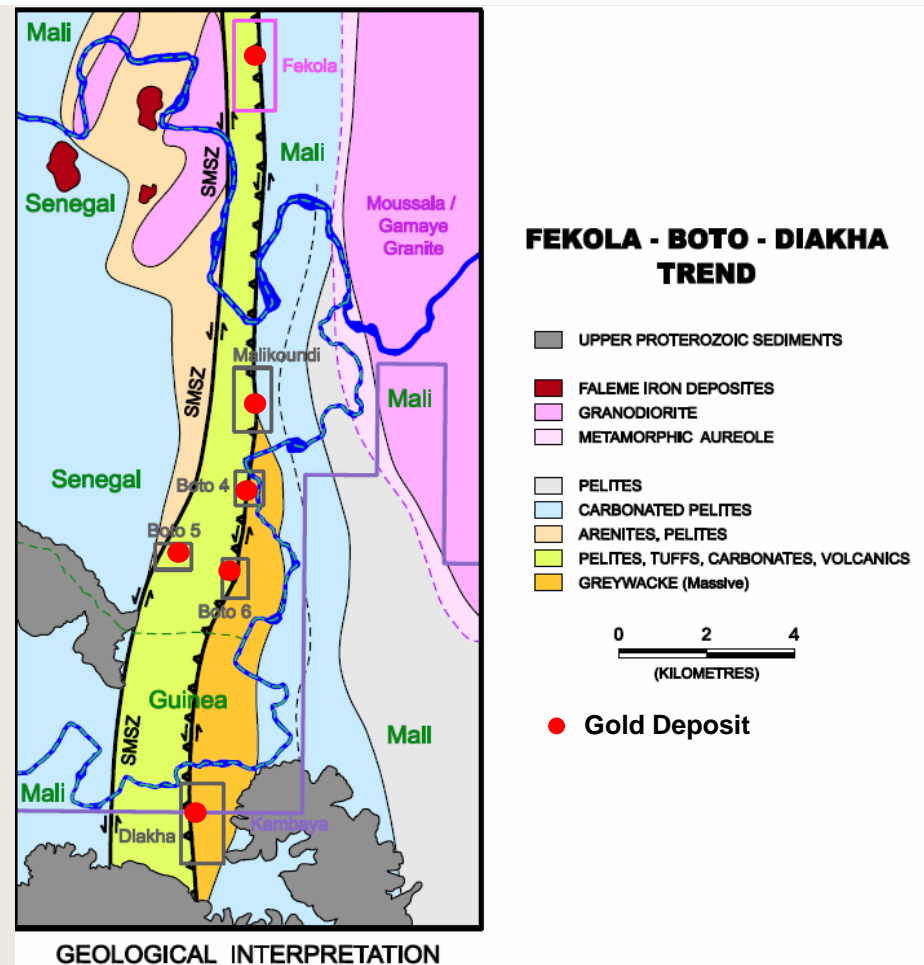
Boto – Senegal (100% owned)

2016 Accomplishments

- Completed drilling at Malikoundi deposit targeting mineralization in footwall and along strike to the north
- Initial drill results confirmed wider intervals of mineralization in footwall and extension of high grade mineralization along strike north of deposit
- Highlights included:
 - Intersection of 32.0 meters grading 5.19 g/t Au in the footwall;
 - Intersections of 12.0 meters grading 6.39 g/t Au and 22.0 meters grading 4.04 g/t Au north of deposit
 - (See news release dated September 15, 2016)

2017 Objectives

- Further drilling will focus on expanding current mineral resource, with resource update planned
- Also seeking to identify additional satellite zones
- Work on technical and environmental studies will continue with aim of advancing the economic evaluation of the project



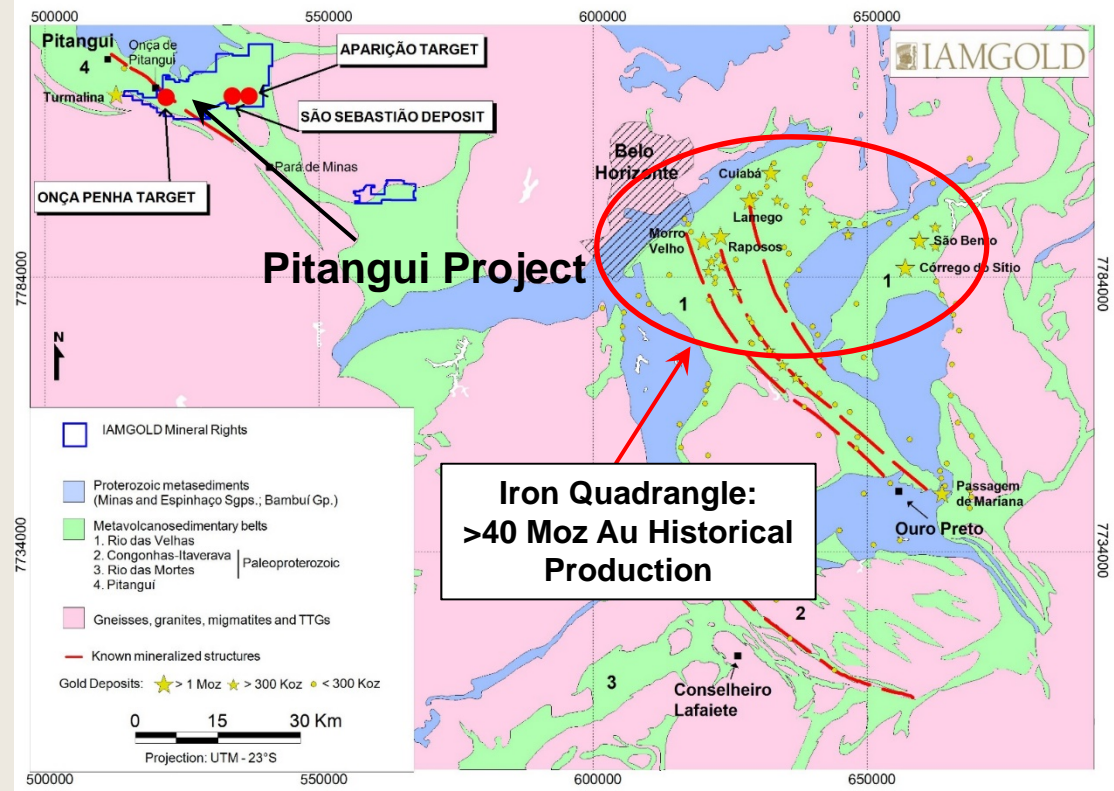
Pitangui – Brazil (100% owned)

2016 Accomplishments

- Diamond drilling confirmed the presence of favourable host iron formations along strike of the São Sebastião deposit
- Permits obtained to allow drilling of the shallow up-plunge extension of the deposit

2017 Objectives

- Diamond drilling to continue in 2017 to expand current resources
- Work has commenced on various technical and environmental studies to advance economic evaluation of project



Loma Largo – Optionality via Strategic Investment

Project Overview

- IAMGOLD owns ~36% of INV Metals (TSX:INV)
- PFS has robust economics with after-tax IRR of 26.3%, NPV@5% of US\$300.9M, payback of 2.7 years
- Underground mine, straight forward project, ramp into deposit, long hole stoping and drift and fill mining
- Probable Mineral Reserves of 1.86 M oz of contained Au at 4.98 g/t, 10.5 M oz contained Ag at 28.0 g/t, 73.6 M lb contained Cu at 0.29%
- Indicated Mineral Resources of 2.55 M oz of contained Au at 4.42 g/t, 16.3 M oz contained Ag at 28.3 g/t, 104 M lb contained Cu at 0.26%
- Inferred Mineral Resources of 0.54 M oz of contained Au at 2.29 g/t, 5.7 M oz contained Ag at 24.1 g/t, 21 M lb contained Cu at 0.13%
- Targeting production for 2021
- Considerable exploration potential
- Proven board, management and technical team
- On February 16, 2017 INV Metals announced a C\$27.6 million bought deal financing, including C\$3.6 million over-allotment option, for advancing development of the project and for general corporate purposes

See INV news release dated July 14, 2016

PFS Highlights*

Mine Life	~11 years
Nameplate Capacity	3,000 tpd
Annual Average Gold Production	150,000 oz
Gold Grade	4.98 g/t
Gold Production	1.68 million oz
Gold Recovery	90%
Adjusted Operating Costs	\$510/oz sold
All-in Sustaining Costs	\$577/oz sold
All-in Costs	\$778/oz sold
Initial Capital	\$286M
Sustaining Capital and Closure Costs	\$94M

Ecuador – Strong Commitment to Mining

- Loma Largo and INV Metals have strong support from Ecuadorian government and local communities
- The creation of Ministry of Mines in 2015 was a significant commitment to mining with positive changes to mining tax laws
- Significant investment in roads, airports, ports, hydroelectric power

*See page 44 for more information

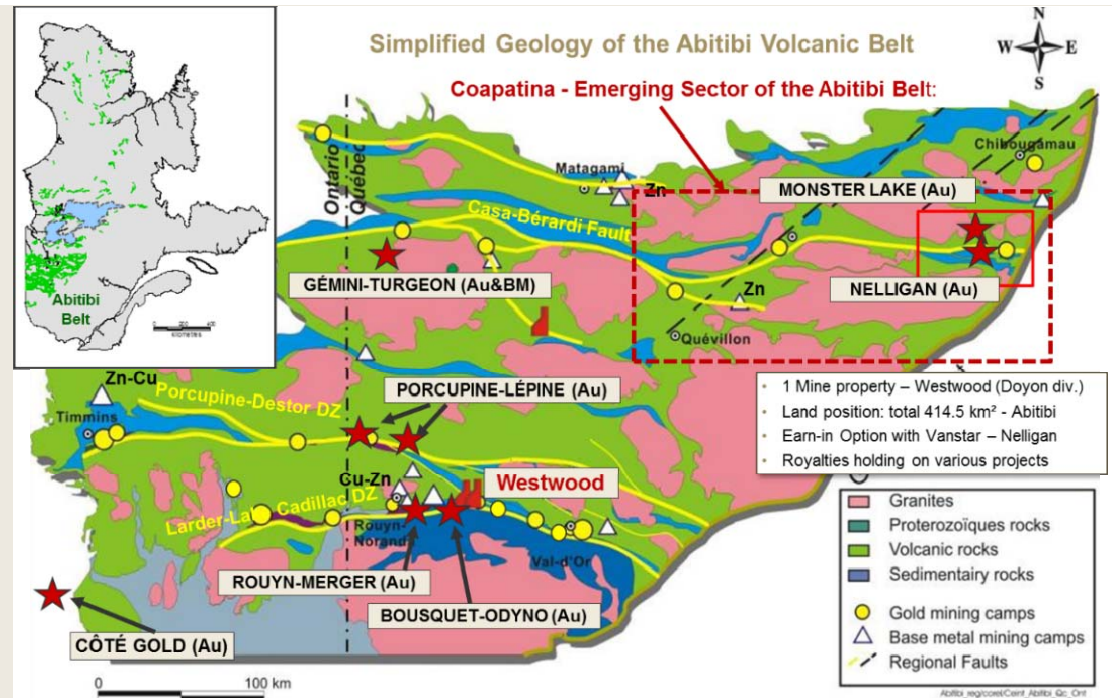
Monster Lake – Quebec (50-50 Joint Venture with TomaGold)

2016 Accomplishments

- Diamond drilling targeted Monster Lake Shear Zone (“MLSZ”) which hosts the 325-Megane zone
- Drilling is interpreted to have intersected a new, mineralized structure parallel to the MLSZ structure in an area located 200 to 400 meters to north of 325-Megane zone

2017 Objectives

- Goal in 2017 is to better define and extend the known mineralization along the MLSZ and parallel structures
- Objective is to estimate an initial mineral resource during the year as results merit



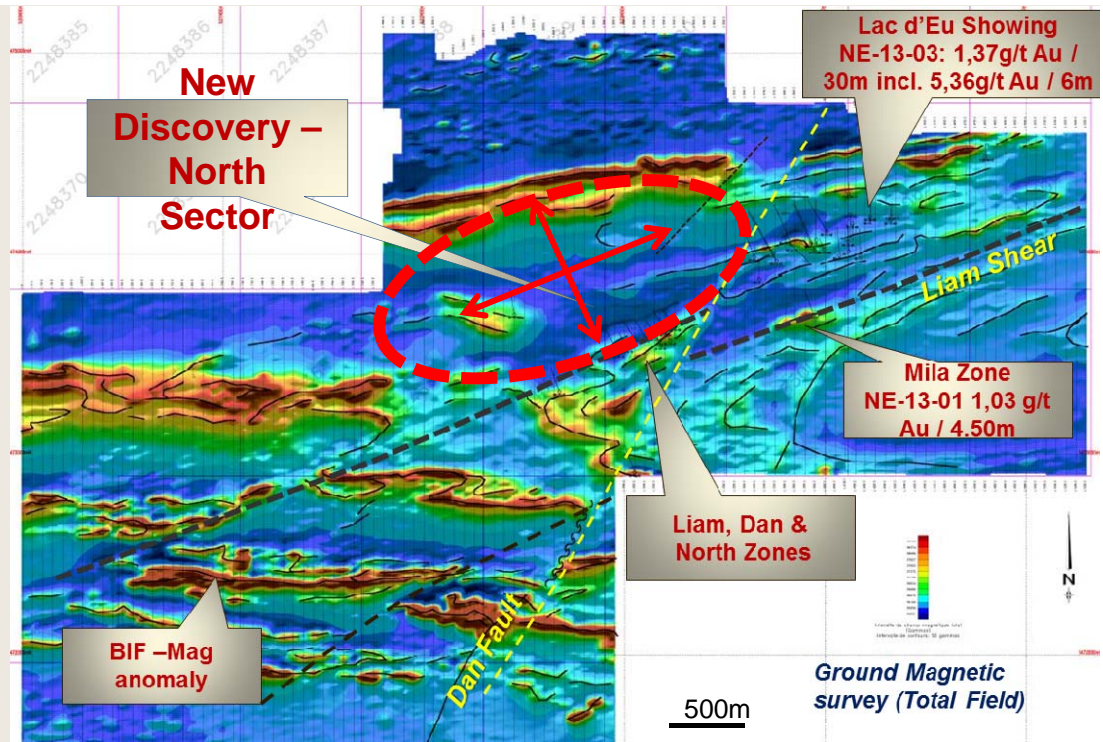
Nelligan – Quebec (Earn-In Option with Vanstar Mining)

2016 Accomplishments

- Exploration drilling to test Induced Polarization (IP) anomalies have discovered new zones of gold mineralization
- Intersections from new discovery area include:
 - Up to 35.8 metres grading 1.90 g/t Au from 138 metres depth, including 18.0 metres grading 3.20 g/t Au; and 23.0 metres grading 1.23 g/t Au from 229.0 metres depth, including 10.3 metres grading 2.02 g/t Au from 238.5 metres depth within a wide zone of altered metasedimentary rocks with numerous gold bearing intervals
 - (See Vanstar Mining news release dated April 5, 2016)
- Results pending from 5 holes totaling 2,200 meters drilled in Q4

2017 Objectives

- Diamond drilling has commenced to evaluate the new discovery
- 15 km from Monster Lake deposit; potential to become district with shared synergies



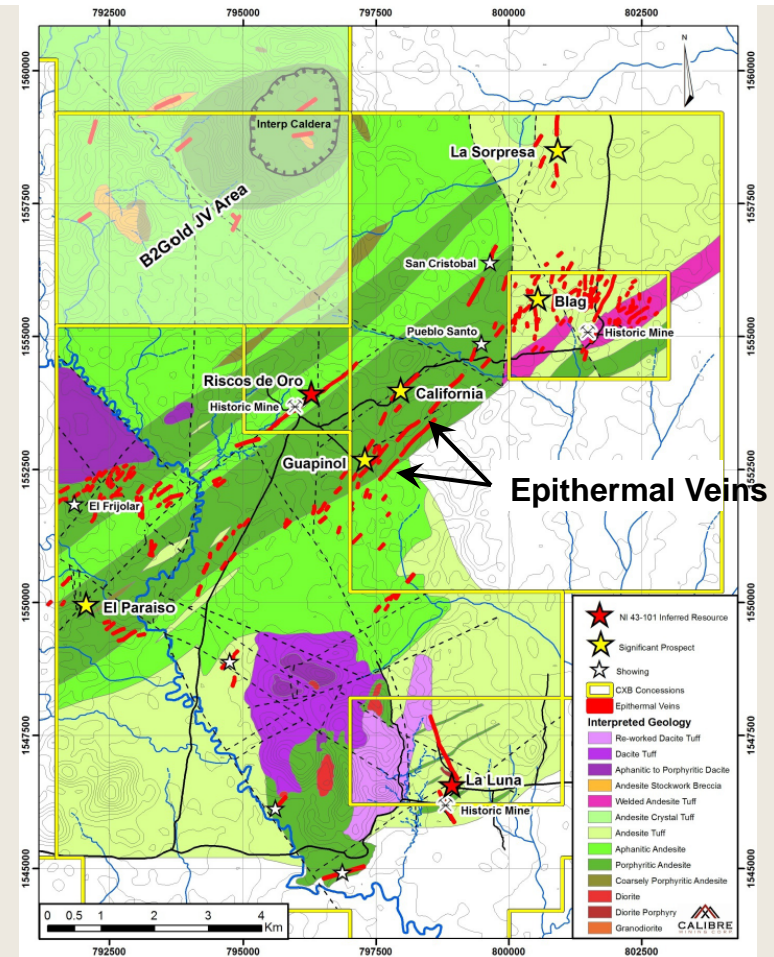
Eastern Borosi – Nicaragua (Option Agreement with Calibre Mining)

2016 Accomplishments

- Diamond drilling tested selected gold-silver vein systems
- Encouraging drilling results reported from a number of vein systems including a new discovery at Veta Loca, which intersected 6.3 metres grading 10.2 g/t Au and 6.9 g/t Ag over 6.3 meters
- (See Calibre Mining news release dated September 15, 2016)

2017 Objectives

- Evaluate resource potential of the Guapinol, Riscos do Oro, and East Dome veins
- If results are positive, they will be used to complete a NI 43-101 compliant resource estimate
- IAMGOLD expects to vest an initial 51% interest in the project, and has an option to increase its ownership to 70%



*Reported by Calibre Mining September 15, 2016

Diakha-Siribaya – Mali

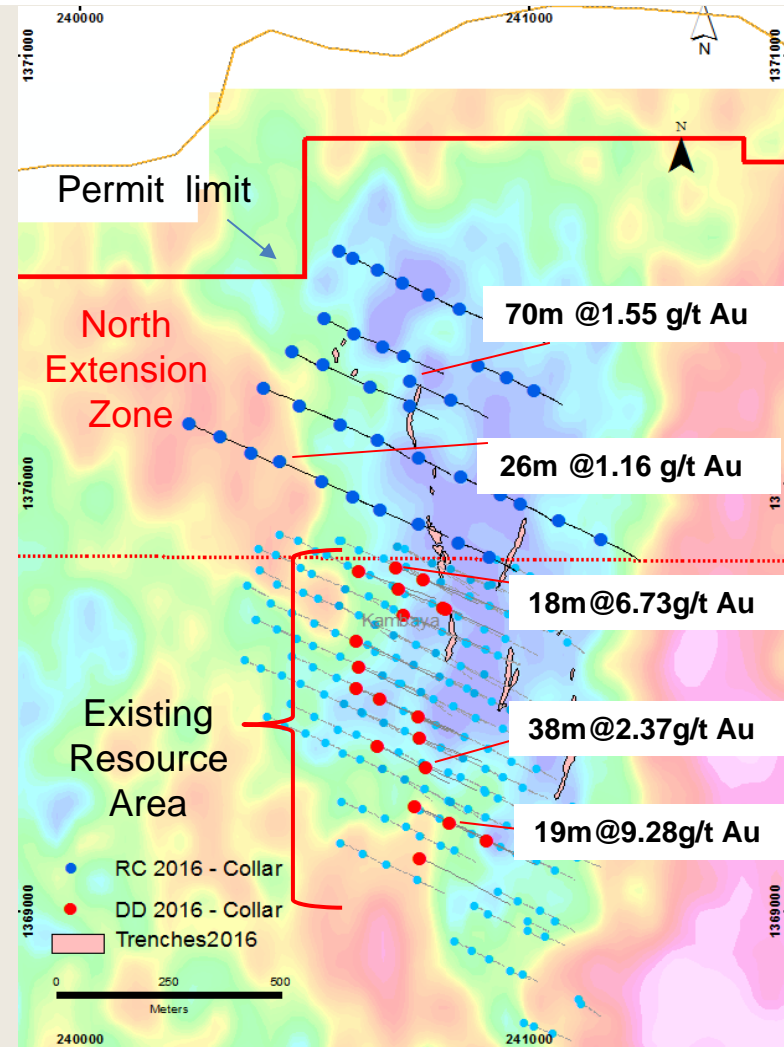
2016 Accomplishments

- Diamond and reverse circulation drilling:
 - Extend the deposit at depth below the current resource pit shell;
 - Test for potential northern strike extension of Diakha deposit
- Reported assay results included:
 - Intersections of 19.0 meters grading 9.28 g/t and 18.0 meters grading 6.73 g/t
- Wide-spaced RC drilling along northern strike confirmed presence of gold mineralization:
 - Intersection of 70.0 meters grading 1.55 g/t Au including 12.0 meters grading 2.79 g/t Au

(See Merrex Gold news release dated July 6 and August 30 2016)

2017 Objectives

- Consolidating 100% interest in project
- Drilling will focus on increasing the confidence in the current Diakha resources and delineating mineralization northward along strike
- Results will be used to update mineral resources in 2017



Clear Criteria Supports Disciplined Approach to M&A

- **Focus is on opportunistic M&A**
- **Comfortable with M&A in jurisdictions where our presence is established**
 - ie. North America, West Africa, Latin America
- **Projects/Mines capable of producing > 100,000 ounces per year; and adding 1 M ounces of M+I Resources**
- **Forecast AISC below the long-term targets**
- **Gold-focused, or predominantly gold-focused assets**
 - Au/Cu porphyry fits strategy if predominantly Au
- **Open to transacting at the asset level or project stage**

Timeline For Growth Catalysts – 2017 to 2020

2017

Sadiola

- Sulphide Expansion Project construction start

Côte Gold

- PFS to be released summer 2017 and initiate FS

Rosebel

- Initial resource estimate at Saramacca deposit in Q3

Pitangui

- Advance evaluation studies and revise mineral resource estimate in Q4

Boto Gold

- Resource update in Q4 and evaluation studies to continue

Essakane

- Updated resources at Falagountou satellite deposit in H1

Diakha-Siribaya

- Resource update by year end

2018 – 2020

Westwood

- Full ramp-up by 2019

Sadiola Sulphide Expansion

- Production 2019/2020

Boto

- FS in 2017, potential start up in 2019

Loma Largo

- Longer term potential



IAMGOLD[®]
CORPORATION

Financial Management

Focused on Maintaining Financial Strength

- **One of the strongest balance sheets in the gold industry**
- **Committed to prudent financial management**
- **Sustainable cost reductions across all operations**
- **Improving gold margins**
- **Focused on the “3 C’s”:**
 - Cash preservation/allocation
 - Cost reduction
 - Capital discipline

Returned to profitability in 2016

Balance Sheet Strength Underpins Financial Flexibility

Position (as at December 31, 2016)	\$M
Cash and cash equivalents (Excludes restricted cash)	652
Restricted Cash	111
Available Credit Facility ¹	247
Total Available Liquidity:	899
LTD - senior unsecured notes due in 2020	489
Shareholder's Equity (incl. non-controlling interests)	2,271
Total Capitalization	2,760
Net Cash (Excludes restricted cash)	163

Credit Metrics²	Debt Covenants	
EBITDA (TTM) – adjusted	\$296M	
Net Debt/EBITDA (TTM)	0x	<3.5X
Long-Term Debt/EBITDA (TTM)	1.64x	
Interest coverage	12.87x	>2.5X
Long-Term Debt/Equity	21%	
Long-Term Debt/Capitalization	18%	

1. Credit facility increased to \$250M as of February 17, 2017

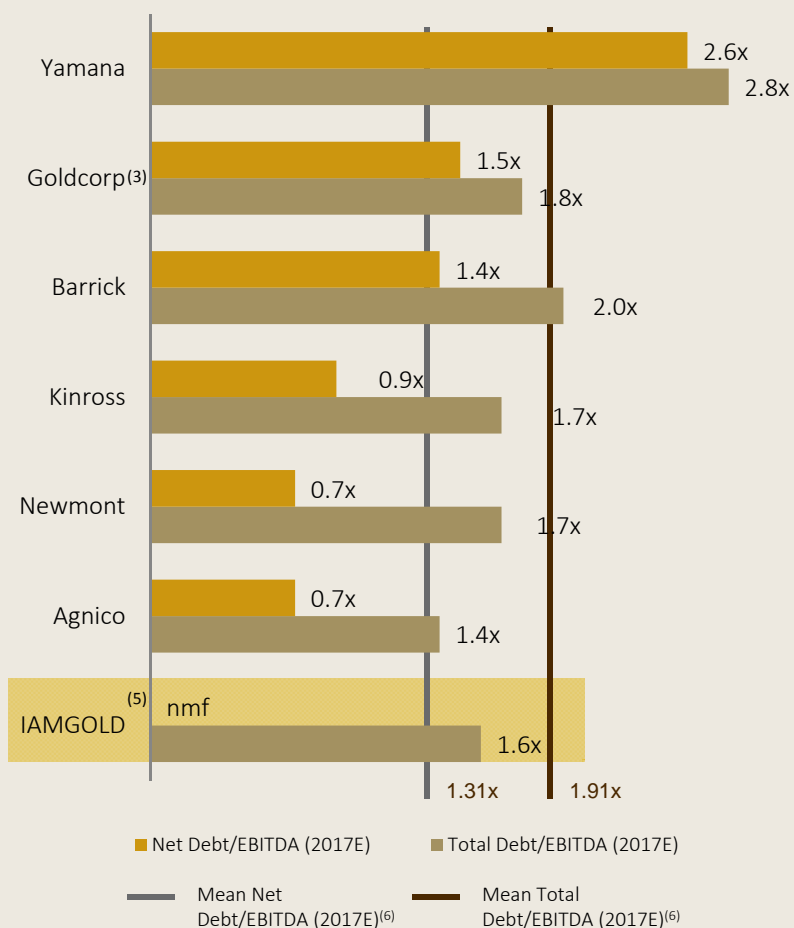
2. Sourced from Bloomberg

Long-term debt reduced by 23%; strong liquidity position supports internally funded growth, including SSP

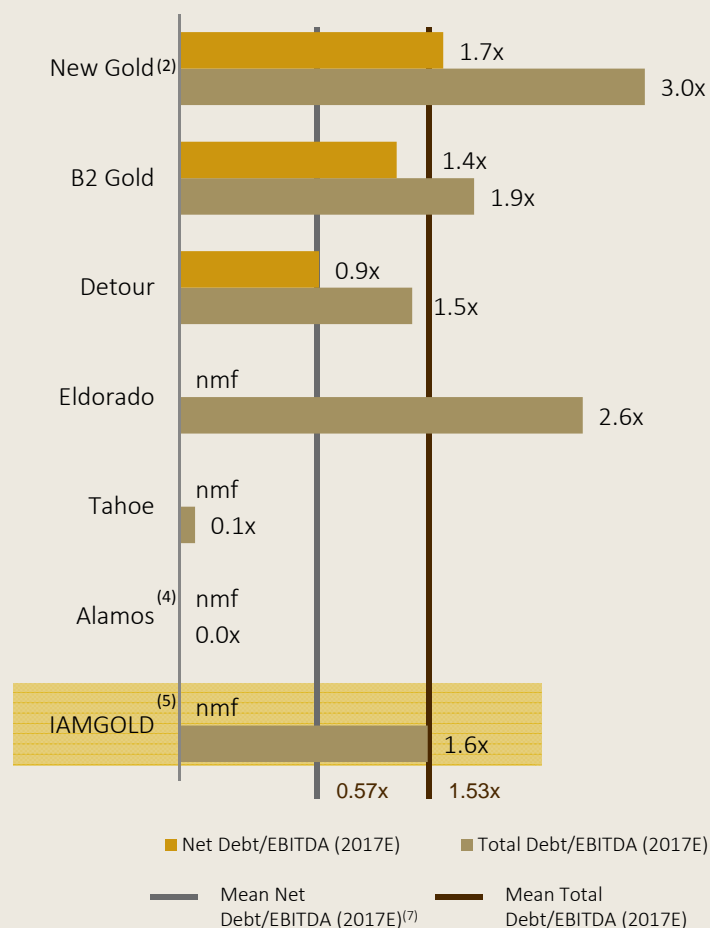
Strongest Liquidity Amongst Intermediate Producers

Current Leverage Metrics – Debt / EBITDA*

Senior Producers⁽¹⁾



Intermediate Producers⁽¹⁾



Source: TD Securities and Company reports; 2017E EBITDA based on Capital IQ consensus estimates

(1) Restricted cash removed from cash balance

(2) Includes US\$65mm proceeds from sale of El Morro stream announced February 8, 2017 and US\$150mm from equity financing announced February 22, 2017

(3) Includes cash proceeds from sale of Cerro Blanco (US\$18mm) and Los Filos (US\$279mm), announced January 11, 2017 and January 12, 2017. Cash adjusted for acquisition of El Morro stream (US\$65mm) announced February 8, 2017

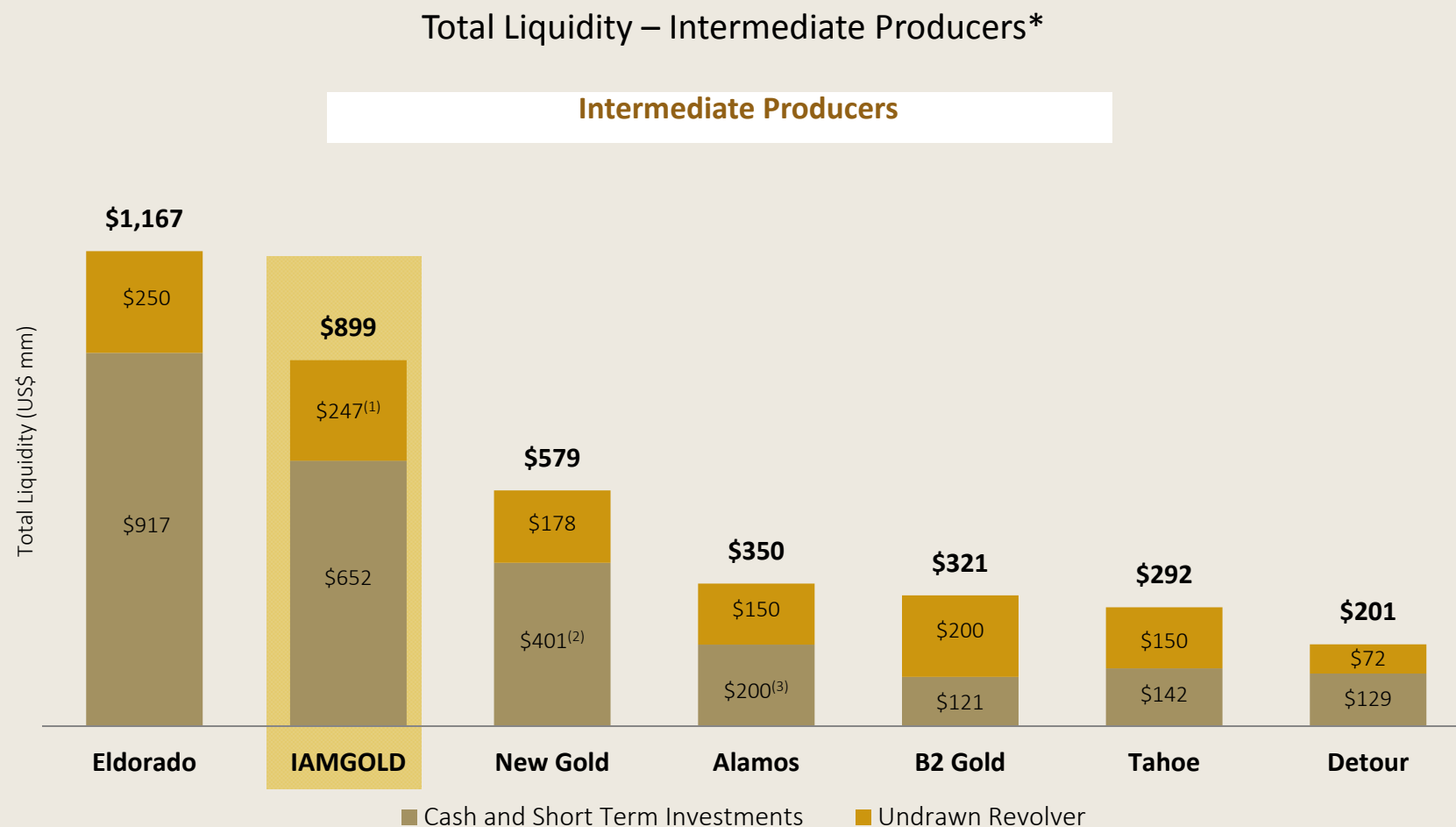
(4) Assumes existing senior secured notes are fully repaid using proceeds from equity financing and cash, as per January 26, 2017 press release

(5) US\$652mm of cash and cash equivalents and US\$489mm in debt, as at December 31, 2016

(6) Senior Producers averages do not include IAMGOLD

(7) Negative Net Debt / EBITDA multiples adjusted to zero for average calculation

Industry Leading Leverage Multiples



Note: Outstanding letters of credit are deducted from undrawn revolver balance. Cash and short term investments exclude restricted cash

1. US\$250mm revolving credit facility, less US\$2.9mm issued letters of credit

2. Includes US\$65mm consideration from sale of El Morro stream announced February 8, 2017 and US\$150 equity financing announced February 22, 2017

3. Assumes existing senior secured notes are fully repaid using proceeds from equity financing and cash, as per January 26, 2017 press release

*Source: TD Securities and Company reports current as of February 24, 2017



IAMGOLD[®]
CORPORATION

Commitment
to CSR

Industry Leading CSR Performance

- **Commitment to CSR drives competitive advantage**
 - Strong host-country government and community relations
- **“Zero harm” focus for safety, environment and communities**
 - Committed to maintaining best-in-class safety standards
 - Goal is no fatalities, no level 4 or 5 safety, health or community Incidents
 - Targeting 10% reduction in TRI rate and DART events
- **All key health, safety and sustainability results better than budget in 2016**
- **Ongoing support for company-wide CSR initiatives**

Why Invest in IAMGOLD?

- **Established gold producer with industry leading growth profile**
- **Geographically diversified in three prolific gold producing regions**
- **Optimizing all operations and lowering cost structure**
- **Exploration program driving greenfield and brownfield growth**
- **Balance sheet strength underpins financial flexibility**
- **“Zero harm” focus for safety, environment and communities**
- **Skilled management team with track record of on time and on budget project management**



IAMGOLD[®]
CORPORATION

Appendix

Mineral Reserves and Resources

Contained Gold (000s attributable oz.) As of December 31st	2016	Change	2015
Total proven and probable mineral reserves ¹	7,798	1.4%	7,690
Total measured and indicated mineral resources ^{2,3}	23,331	(0.6%)	23,482
Total inferred resources	6,124	(9.0%)	6,733

- Mineral reserves have been estimated at December 31, 2016 using a gold price of \$1,200 per ounce for Essakane, Rosebel and Westwood and \$1,100 per ounce for Sadiola.
- Mineral resources have been estimated at December 31, 2016 using gold price of \$1,500 per ounce for the Côte Gold project, Boto project, Siribaya project, Pitangui project, Essakane and Rosebel and \$1,400 per ounce for Sadiola.

1. Detail behind the gold price assumptions used to determine reserves and resources can be found in the Reserves and Resources section of the MD&A.

2. Measured and indicated gold resources are inclusive of proven and probable reserves.

3. In mining operations, measured and indicated resources that are not mineral reserves are considered uneconomic at the price used for reserves estimations, but are deemed to have a reasonable prospect of economic extraction.

2017 Production and Cost Guidance

	2017 Guidance ⁴
Essakane (000s oz.)	370 – 380
Rosebel (000s oz.)	295 – 305
Westwood (000s oz.)	115 – 125
Total owner-operated production (000s oz.)	780 – 810
Joint ventures (000s oz.)	65 – 75
Total attributable production (000s oz.)	845 – 885
Cost of sales¹ (\$/oz.)	\$765 – \$815
Total cash costs² – owner-operator (\$/oz.)	\$740 – \$780
Total cash costs^{2,3} (\$/oz.)	\$740 – \$780
All-in sustaining costs ² – owner-operator (\$/oz.)	\$1,000 – \$1,080
All-in sustaining costs ^{2,3} (\$/oz.)	\$1,000 – \$1,080

1. Cost of sales, excluding depreciation, on an attributable ounce sold basis does not include JVs which are accounted for on an equity basis

2. This is a non-GAAP measure. Refer to the non-GAAP performance measures section of the MD&A for reconciliation to GAAP.

3. Consists of Essakane, Rosebel, Westwood and the JVs on an attributable basis.

4. 2017 guidance is based on Q4'16 assumptions with an average realized gold price of \$1,250 per ounce, Canadian \$/USD exchange rate of 1.35, USD/€ exchange rate of 1.08 and average crude oil price of \$48/barrel.

2017 Capex Outlook

\$millions	Sustaining	Non-Sustaining	Total ³
Essakane	\$85	\$5	\$90
Rosebel	\$65	\$5	\$70
Westwood	\$20	\$45	\$65
Owner-operator	\$170	\$55	\$225
Corporate and Development Projects	—	\$10	\$10
Total owner-operator	\$170	\$65	\$235
Sadiola (Joint Venture) ¹	\$5	\$10	\$15
Total²	\$175	\$75	\$250 (±5%)

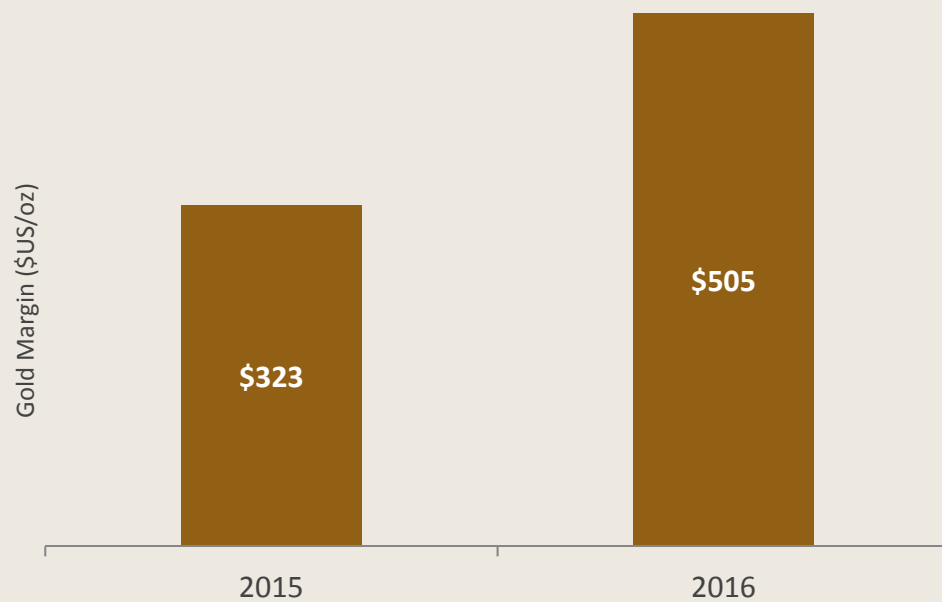
1. Expansionary capital expenditures exclude the construction costs for the Sadiola sulphide project.

2. Capitalized borrowing costs are not included.

3. Includes \$20 million of capitalized exploration expenditures.

Improving gold margins ^{1,2}

Due to:	2015		2016	
Higher gold price	\$1,158	vs.	\$1,244	7%
Lower cash costs	\$835	vs.	\$739	11%



1. Consists of Essakane, Rosebel, Westwood and the JVs on an attributable basis.

2. This is a non-GAAP measure. Refer to the non-GAAP performance measures section of the MD&A for more information.

2016 Production and Costs Summary

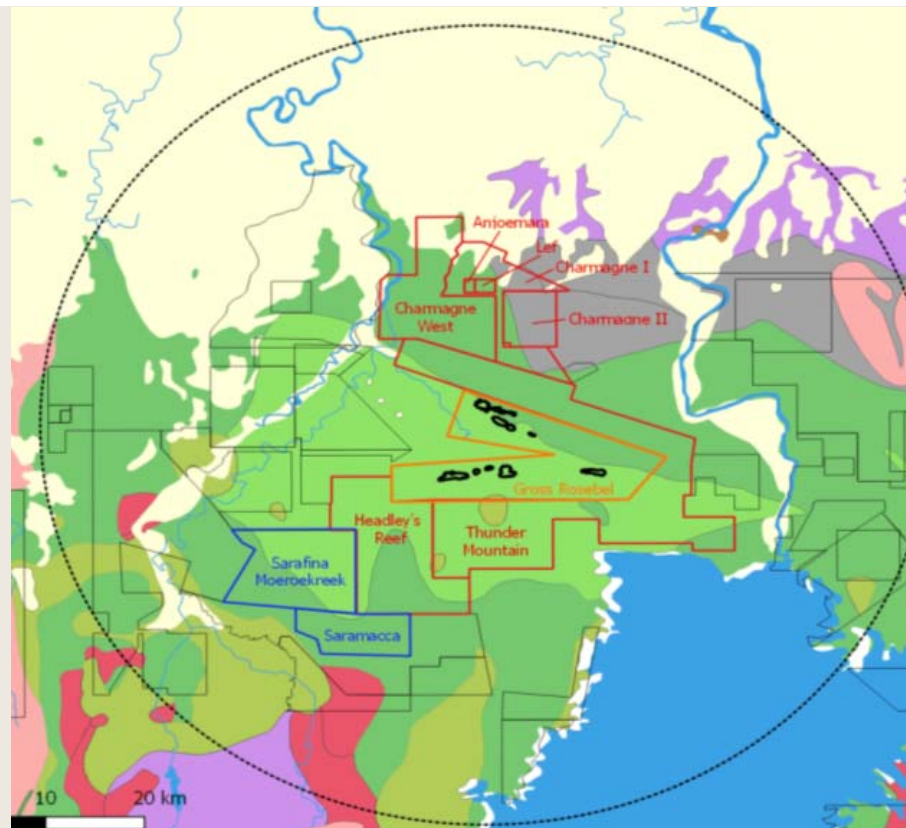
	Attributable Production (oz)	Cost of Sales¹ (\$/oz sold)	Total Cash Costs³ (\$/oz produced)	AISC³ (\$/oz sold)
Essakane	377,000	\$716	\$668	\$977
Rosebel	296,000	\$768	\$729	\$988
Westwood ²	65,000	\$1,324	\$894	\$1,182
Sadiola	70,000	—	\$970	\$1,042
Total	813,000*	\$794	\$739	\$1,057

*Includes 5,000 oz from Yatela which is in closure mode.

1. Cost of sales, excluding depreciation, does not include Joint Ventures which are accounted for on an equity basis.
2. Cost of sales \$/oz for Westwood does not consider the impact of normalization of costs and revised ramp-up for the year ended 2016 of \$385/oz.
3. This is a non-GAAP measure. Refer to the non-GAAP performance measures section of the MD&A for more information.

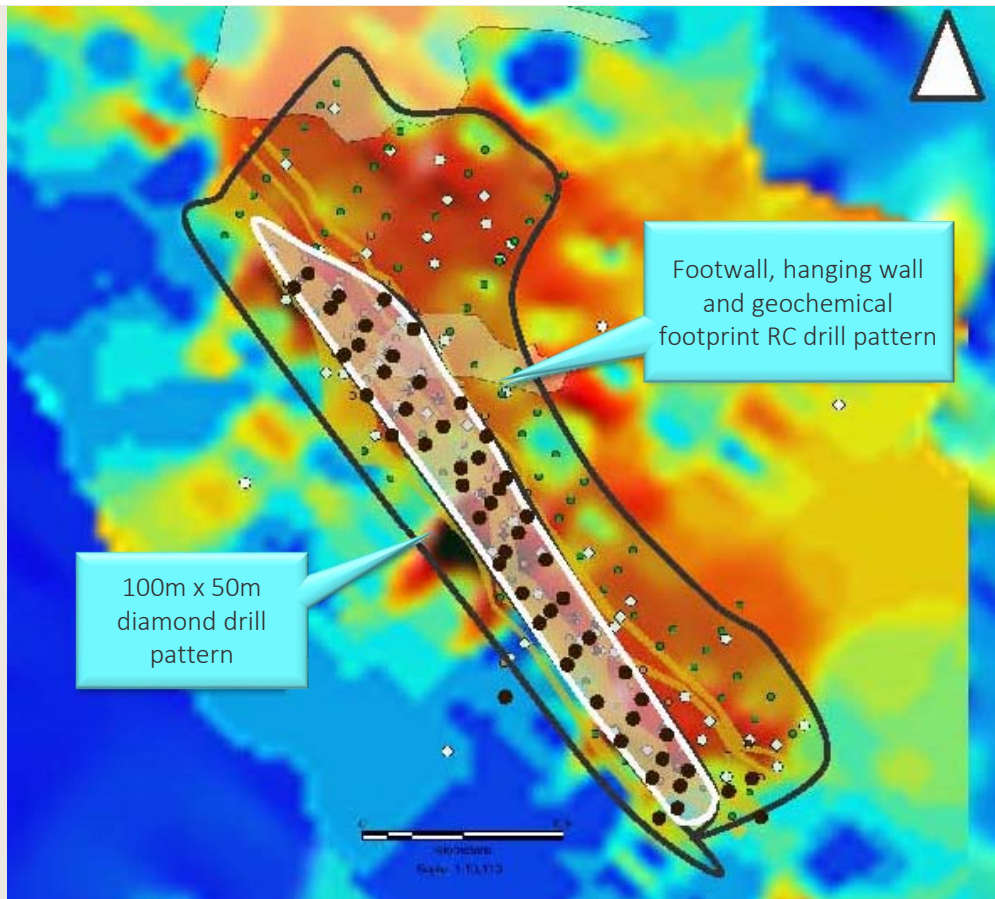
Saramacca – Option Agreement

- Initial cash payment of US\$200,000 on signing
 - Provides access to the property
- Staged purchase totaling US\$10 million and 3.125 million IAMGOLD shares
 - Shares released over 3 x 1 year intervals
 - Price Adjustment based on gold oz above 1.0 Moz outlined in MI resources within 24 months; capped at US\$10M
- Target size
 - 8-40 million tonnes @ between 1.0 - 1.8 g/t Au for 0.5M oz to 1.4M oz
 - Defined by typical tonnes and grade at the top of the Rosebel deposits






Caution: Exploration target size is conceptual in nature; insufficient exploration has been completed to define a mineral resource & it is uncertain if a mineral resource will be delineated. See IAMGOLD News release August 31st 2016

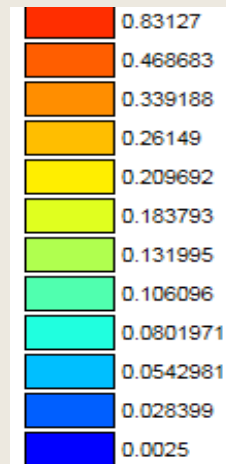
Saramacca – 2016 Drill Campaign



Targeting a 43-101 compliant resource estimate mid-2017

-  **Historical Drilling**
90 diamond drill holes (9,000m)
-  **2016 Planned Drilling**
54 DDH - infill holes (9,000 m)
-  77 RC - Exploration (9,000 m)

Historical Geochemistry
Au ppm



Côte Gold – Evolved Resource Estimate*

Estimate	Indicated Resources ¹			Inferred resources ¹		
	Quantity (Mt)	Grade (g/t Au)	Au Metal (Koz)	Quantity (Mt)	Grade (g/t Au)	Au Metal (Koz)
Trelawney	35.0	0.82	930	204	0.91	5,940
IMG	289.2	0.90	8,354	66.9	0.60	1,174

Since IAMGOLD's acquisition in 2012:

- Indicated resources have increased by ~7.4Moz
- Average grade of indicated resources has increased by 10%
- Mineralization defined over strike length of 1,300 metres, widths between 100-300 metres and to a depth of 900 metres
- Regional exploration continues on the ~500Km² land package

*Trelawney mineral resource estimate as reported February 24, 2012. IMG mineral resource estimate as at December 31, 2016.

1. See mineral reserve and resource estimates with associated notes in appendix.

Technical Information and Qualified Person/Quality Control Notes

The mineral resource estimates contained in this presentation have been prepared in accordance with National Instrument 43-101 Standards of Disclosure for Mineral Projects ("NI 43-101"). The "Qualified Person" responsible for the supervision of the preparation and review of all resource and reserve estimates for IAMGOLD is Lise Chenard, Eng., Director, Mining Geology. Lise has worked in the mining industry for more than 30 years, mainly in operations, project development and consulting. She joined IAMGOLD in April 2013 and acquired her knowledge of the Company's operations and projects through site visits, information reviews and ongoing communication and oversight of mine site technical service teams or consultants responsible for resource and reserve modeling and estimation. She is considered a "Qualified Person" for the purposes of NI 43-101 with respect to the mineralization being reported on. The technical information has been included herein with the consent and prior review of the above noted Qualified Person. The Qualified person has verified the data disclosed, and data underlying the information or opinions contained herein.

The technical information for Sadiola contained in this presentation has been prepared in accordance with National Instrument 43-101 Standards of Disclosure for Mineral Projects ("NI 43-101"). The "Qualified Person" responsible for the supervision of the preparation and review of all technical information for IAMGOLD is Philippe Gauthier, BSc. Mechanical Engineering and MSc Mechanical Engineering, the Director Development Projects for IAMGOLD. Philippe has worked as mechanical engineer for 28 years, mainly in mining and project development. He joined IAMGOLD in 2008 and acquired his knowledge of Sadiola through his work on the Infrastructure and Plant Engineering for an internal feasibility report in 2010, his work to update the documentation and engineering subsequent to that report and his most recent site visit on August 28, 2015. He is considered a "Qualified Person" for the purposes of NI 43-101 with respect to the technical information being reported on. The technical information has been included herein with the consent and prior review of the above noted Qualified Person. The Qualified person has read and verified the data disclosed, and data underlying the information or opinions contained herein.

Drilling results in this presentation have been prepared in accordance with National Instrument 43-101 Standards of Disclosure for Mineral Projects. The sampling of, and assay data from, drill core is monitored through the implementation of a quality assurance - quality control (QA-QC) program designed to follow industry best practice. The "Qualified Person" responsible for the supervision of the preparation, verification, and review of these results is Craig MacDougall, P.Geo., Senior Vice President, Exploration for IAMGOLD. Mr. MacDougall is a Qualified Person as defined by National Instrument 43-101.

Slide 20 footnote

Qualified Persons and NI 43-101 Disclosure The technical information in this presentation has been prepared by independent Qualified Persons employed by Roscoe Postle Associates Inc. ("RPA"), including Katharine Masun, P.Geo. (Mineral Resources), Jason Cox, P.Eng. (Mineral Reserves and economics), and Kathleen Altman, Ph.D., P.E. (metallurgy and processing). By virtue of education and relevant experience, the aforementioned are "Qualified Persons" for the purpose of NI 43-101.

For readers to fully understand the information in this presentation, they should read the Technical Report in its entirety, including all qualifications, assumptions and exclusions that relate to the information set out in the Technical Report which qualifies the technical information contained in the Technical Report. The Technical Report is intended to be read as a whole, and sections should not be read or relied upon out of context. The Technical Report describes the Mineral Resource and Mineral Reserve estimation methodologies and the assumptions used, and to which those estimates are subject. INV Metals' AIF includes details of certain risk factors that could materially affect the potential development of the Mineral Resources and Mineral Reserves and should be considered carefully. A discussion of these and other factors is contained in "Risk Factors" and elsewhere in the Company's AIF, which was filed on SEDAR on March 1, 2016.



IAMGOLD[®]
CORPORATION

Bob Tait

VP, Investor Relations
T: 416-360-4743

Laura Young

Director, Investor Relations
T: 416-933-4952

Shae Frosst

Associate, Investor Relations
T: 416-933-4738

Empowering People,
Extraordinary Performance

| TSX: IMG | NYSE: IAG |