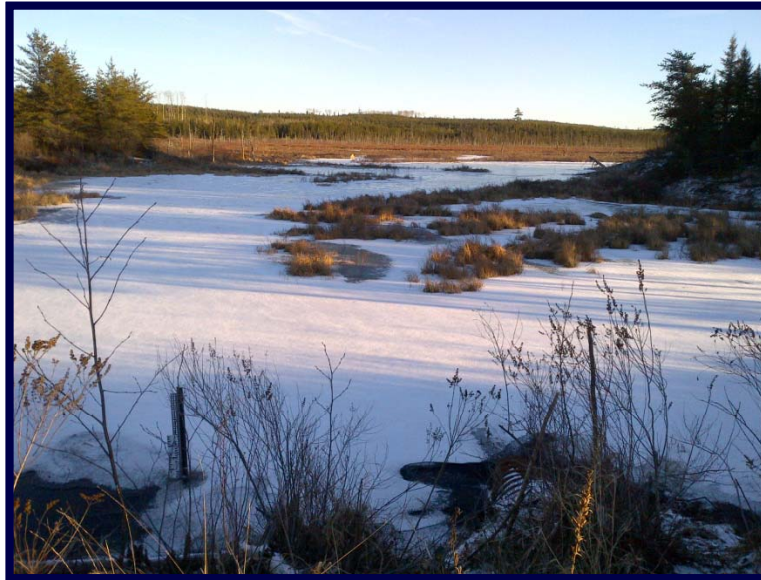


**Record of Consultation for the Côté Gold Project
Provincial Individual EA
Appendix M**



Prepared for:
IAMGOLD Corporation

Prepared by:
AMEC Environment & Infrastructure

Project Number:
TC121522



APPENDIX M

SUMMARY REPORT: FEBRUARY 2013 ABORIGINAL COMMUNITY OPEN HOUSES

CÔTÉ GOLD PROJECT
SUMMARY OF FEBRUARY 2013 OPEN HOUSES IN
ABORIGINAL COMMUNITIES

Submitted to:
IAMGOLD Corporation
401 Bay Street, Suite 3200
Toronto, Ontario
M5H 2Y4

Submitted by:
AMEC Environment and Infrastructure
a division of AMEC Americas Limited
160 Traders Blvd., Suite 110
Mississauga, Ontario
L4Z 3K7

March 2013

TZ12023

TABLE OF CONTENTS

		PAGE
1.0	INTRODUCTION.....	1
2.0	CONSULTATION PROCESS.....	1
2.1	Notification of the Open Houses	1
2.2	Description of the Open Houses	1
2.3	Summary of Comment Forms.....	2
2.4	Summary of Comments and Questions	4
3.0	CONCLUSION	5

LIST OF TABLES

Table 1: Open House Schedule	1
Table 2: Open House Attendance.....	2
Table 3: Comment Form Responses	2
Table 4: Information Needs Responses.....	2
Table 5: Flying Post First Nation Contact Preferences.....	3
Table 6: Mattagami First Nation Contact Preferences.....	4

LIST OF APPENDICES

Appendix A:	Notices
Appendix B:	Poster Boards
Appendix C:	Comment Forms (Completed)
Appendix D:	Meeting Notes

1.0 INTRODUCTION

This Summary of February 2013 Open Houses in Aboriginal Communities Report (Report) is part of the commitment of the IAMGOLD Corporation (IAMGOLD) to engage and consult with Aboriginal communities regarding the proposed Côte Gold Project. The Open Houses were organized by IAMGOLD to introduce IAMGOLD and members of the team, and share information about the Côte Gold Project and the related environmental assessment process. This Report presents a summary of the consultation activities and feedback associated with these sessions.

2.0 CONSULTATION PROCESS

2.1 Notification of the Open Houses

Notifications of the Open Houses were provided in advance to the community of Flying Post First Nation by the Flying Post Band Office membership list. Notification was provided to the Mattagami First Nation membership on reserve individual mail and postings in the community. Copies of the notices are presented in Appendix A.

2.2 Description of the Open Houses

IAMGOLD organized two community open houses that are summarized in Table 1. Prior to each of the meetings, IAMGOLD held in camera meetings with Chiefs and Council to brief them on the materials presented.

Table 1: Open House Schedule

Community	Date and Time
Flying Post First Nation Nipigon, Ontario Nipigon Community Centre	February 13, 2013 from 5:30 to 9:30 p.m.
Mattagami First Nation Mattagami First Nation Community Centre Mattagami Reserve No. 71	February 20, 2013 from 5 to 9 p.m.

At each of these sessions, IAMGOLD presented a series of poster boards (Appendix B). Participants then were encouraged to view information about IAMGOLD, the Côte Gold Project, environmental baseline activities and consultation information. Formal presentations were given during the course of the open houses to offer a verbal overview of the Project.

Attendees were encouraged to sign a register during the session. Each of the open house sessions was preceded by a community meal hosted by IAMGOLD. A summary of the attendance that signed in at each session is presented in Table 2. It is recognized that a number of attendees attended but did not register.

Table 2: Open House Attendance

Community	Number of Attendees
Flying Post First Nation	33 signed in
Mattagami First Nation	39 signed in

Comment forms were made available for each attendee. Project representatives encouraged attendees to fill out and return the comment forms following the session. Comments and questions gathered from comment form submissions and records of conversations gathered by open house staff are presented in Section 2.3.

2.3 Summary of Comment Forms

Completed Comment Forms are presented in Appendix C and a summary of the number of returned Comment Forms is presented in Table 3.

Table 3: Comment Form Responses

Community	Number of Comment Forms
Flying Post First Nation	12
Mattagami First Nation	3

1. Did the Open House meet your information needs?

Table 4: Information Needs Responses

Community	Yes	No
Flying Post First Nation	12	0
Mattagami First Nation	1	2

2. If not, what other information would you like to better understand the Project?

Mattagami First Nation

- More Info
- No Draft's for Agreements for Environment
- I.B.A. – Draft
- Business #s and Jobs, Business #s and extensions, job position

3. Do you have any information that might be relevant to the proposed mine area?

Flying Post First Nation

- Not at this time

Mattagami First Nation

- Not Really
- More info packages related to discussion.

4. Do you have any comments, concerns or suggestions related to the draft Project Description for the Côté Gold Project?

Flying Post First Nation

- They answered all of my environmental questions
- More open houses – information concerning job opportunities with contractors
- Not at this time
- No
- Sounds great!

Mattagami First Nation

- Waterways and Tailings
- More senior management should be at these sessions. Operating management for gold producing.
- Environment=of non-contaminated waters=greatest concern.
- For people that don't drive would maybe a shuttle bus, be available for workers to travel of course depending on how many employees would come from Mattagami First Nation.

5. How would you like to receive future information about the Côté Gold Project?

Table 5: Flying Post First Nation Contact Preferences

Method of Contact	No. of Responses
Open Houses	3
Direct Mail	5
Email	7
Website	5
News Media	1
In person discussion with IAMGOLD representatives	2
Other	0

Table 6: Mattagami First Nation Contact Preferences

Method of Contact	No. of Responses
Open Houses	1
Direct Mail	1
Email	3
Website	0
News Media	0
In person discussion with IAMGOLD representatives	1
Other	0

6. Additional Questions/Comments (if you would like a reply be sure to provide your contact information):

Flying Post First Nation

- More training opportunities explained and how to go about applying.

Mattagami First Nation

- Legal Team who?
- Would Aboriginal people would be first for job openings upon availability? Would training also be available if needed through IAMGOLD?

2.4 Summary of Comments and Questions

The following presents a summary of the comments and questions received during the sessions. Meeting notes taken at each of the open houses are attached in Appendix D.

- Potential employment and business opportunities and opportunities for youth training;
- Alternatives and precedents for draining and moving Côté Lake;
- Species of fish in Côté Lake;
- Effects on fish resident in Côté Lake and whether they will monitored after the lake is moved;
- Frequency and management of unintended water releases;
- Potential water seepage at the site and how it will be managed;
- Stockpile rehabilitation and management;
- Closure planning and rehabilitation; and
- Tailings management and potential effects on surface and ground water, and especially the Mollie River.

3.0 CONCLUSION

Overall, there was a positive interest in the Project as a socio-economic benefit to the area and specifically to the communities. From the comments received, there is a concern about ensuring water is protected from mine contaminants and that fish populations are maintained.

APPENDIX A
NOTICES



FLYING POST FIRST NATION

To: Flying Post First Nation Members
Re: Notice of Upcoming Meeting

Flying Post First Nation - IAMGOLD/Cote Gold Project

Community Information Session

Wednesday February 13, 2013

Dinner will be served at 5:30 p.m.

Followed by a presentation from IAMGOLD

At the

Nipigon Community Centre (Arena)

Multi-Purpose Room (138 Wadsworth Drive)

Please RSVP by Friday February 8, 2013

to the Flying Post First Nation Band Office

phone: 807-887-3071 toll free: 1-800-987-3708 email: flypost@shawbiz.ca

The purpose of this meeting is for representatives from IAMGOLD to give their project description to the members of Flying Post First Nation regarding the Cote Gold Mining Project. All Band Members are encouraged to attend and provide their support for this meeting.

You're Invited...

to come out to one of our community events to learn more about the Côté Gold Project.



IAMGOLD Corporation is hosting community open houses to share information about the Côté Gold Project, a proposed open pit gold mine, located 20 kilometres southwest of Gogama, Ontario. IAMGOLD has begun preparing a draft Project Description as part of the Federal environmental assessment process under the *Canadian Environmental Assessment Act, 2012*.

IAMGOLD would like to meet with residents in the area, to hear your thoughts about the Project and what environmental considerations are important to you so that they may be considered in Project plans.

PLEASE DROP BY OUR COMMUNITY OPEN HOUSE:

**Mattagami First Nation
Wednesday, February 20th**

Feast served at 5:00 p.m.
Presentation to follow
Mattagami First Nation Complex

To ask questions or provide comments about the Côté Gold Project please contact:

Cheryl Naveau

First Nations Liaison and Public Relations
Tel: 705-269-0010
Email: Cheryl_Naveau@iamgold.com

Aaron Steeghs

Manager, Corporate Social Responsibility
Tel: 416-933-4961
Email: Aaron_Steeghs@iamgold.com

Additional Open Houses:

Tuesday, February 26th

3:00 to 7:00 p.m.

McIntyre Community Centre
85 McIntyre Road
Timmins (Schumacher), ON

Wednesday, February 27th

3:00 to 7:00 p.m.

Gogama Community Centre
Highway 661, Gogama, ON

Thursday, February 28th

3:00 to 7:00 p.m.

T.M. Davies Community Centre
(Walden Community Centre)
325 Anderson Drive
Sudbury (Lively), ON

APPENDIX B
POSTER BOARDS

IAMGOLD's CÔTÉ GOLD PROJECT

(NOTE: presentation amended April 2013 to correct some photograph captions)



Welcome

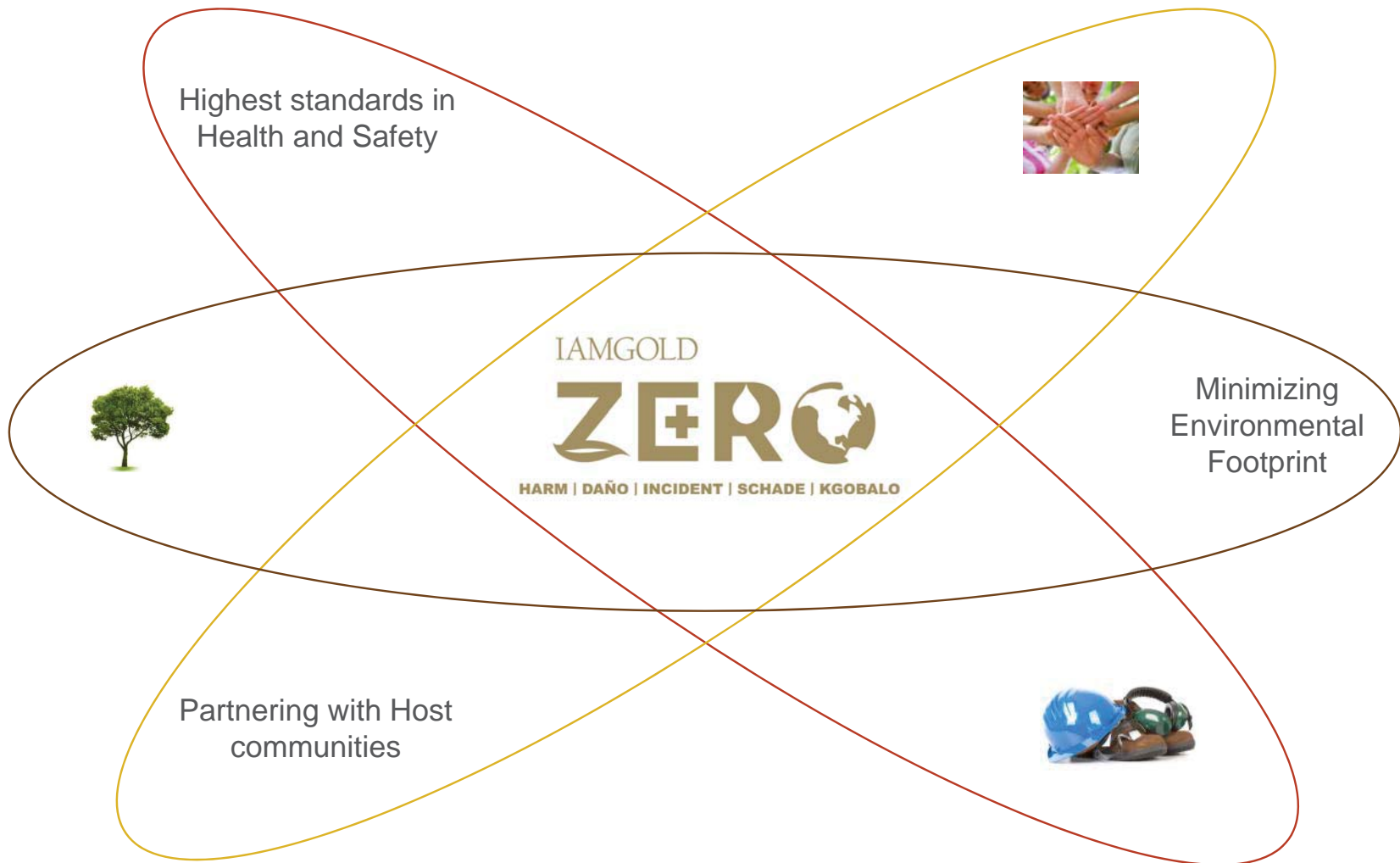
TSX: IMG NYSE: IAG

Purpose of our Open House

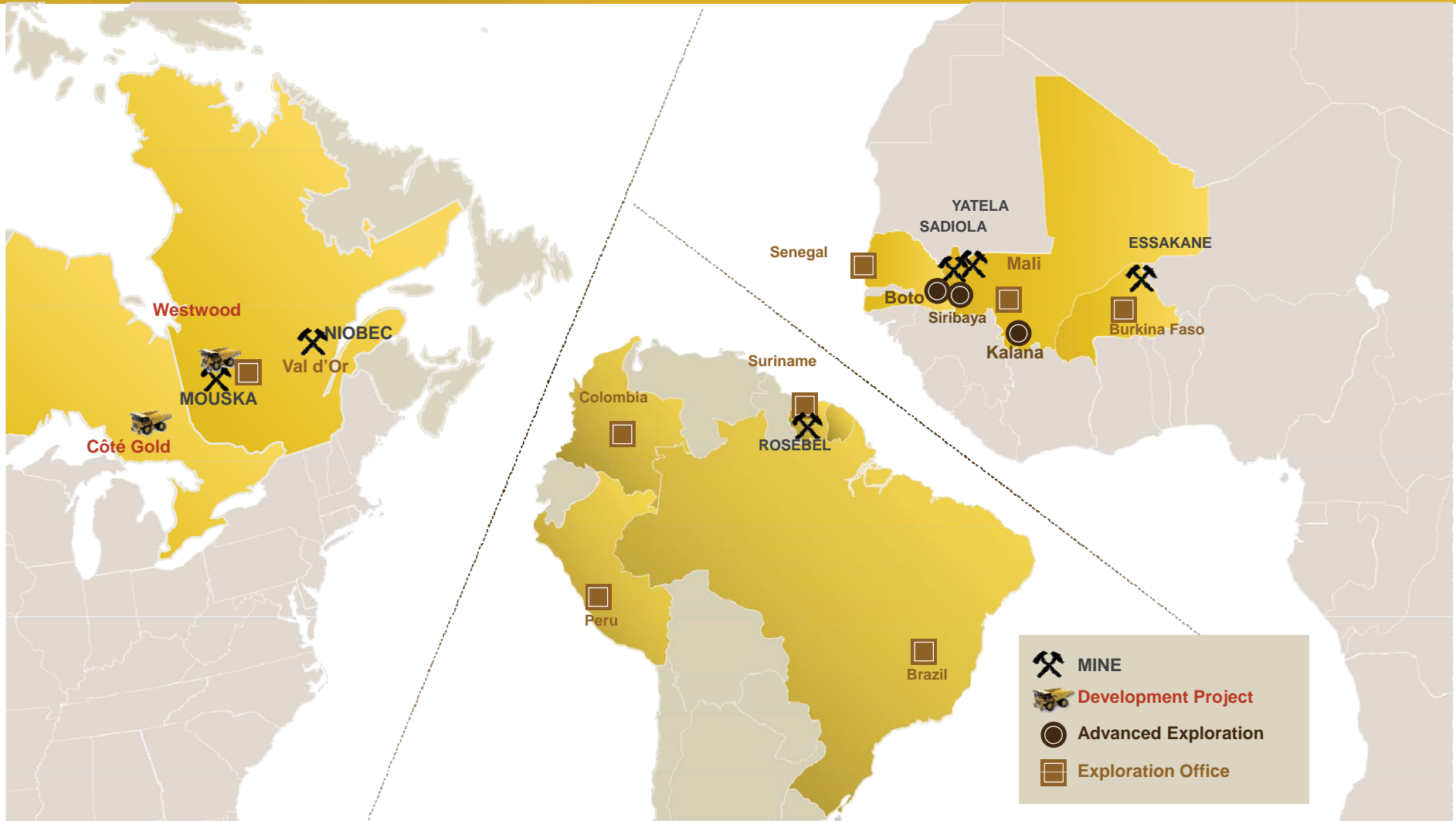
- **Provide an overview of:**
 - › Project components (preliminary)
 - › Potential environmental effects
 - › How and when we would involve you in the environmental assessment
- **Hear and record your thoughts on the above**
- **Consider your feedback for incorporation into a final “Project Description” report for submission to the Canadian Environmental Assessment Agency in March 2013**
- **The Province (Ministry of Northern Development and Mines and other agencies) will also review the Project Description and use it to determine what type of Provincial Environmental Assessment is required**



Who is IAMGOLD Corporation? Conduct Governed by Zero Harm Framework



IAMGOLD's Global Mining Operations



IAMGOLD's Social Partnerships

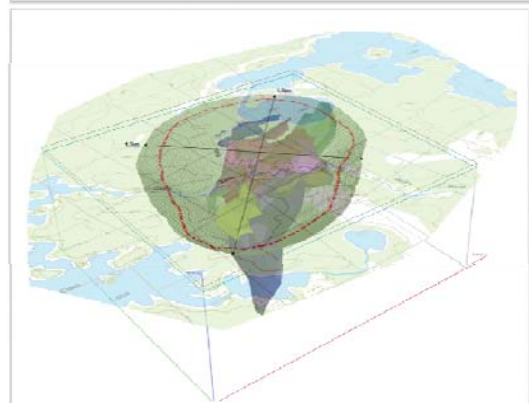
IAMGOLD's approach to community investment is to develop partnerships with local, regional and national stakeholders, recognizing the need for local insight, sustainability, transparency and quality.

Across Quebec, Ontario, Burkina Faso, and Suriname, IAMGOLD maintains 50 partnerships with government and civil society organizations. Canadian partners include: Relay for Life, Canadian Cancer Society, CIDA, Plan Canada, Right to Play, and United Way.



Côte Gold Project: Overview

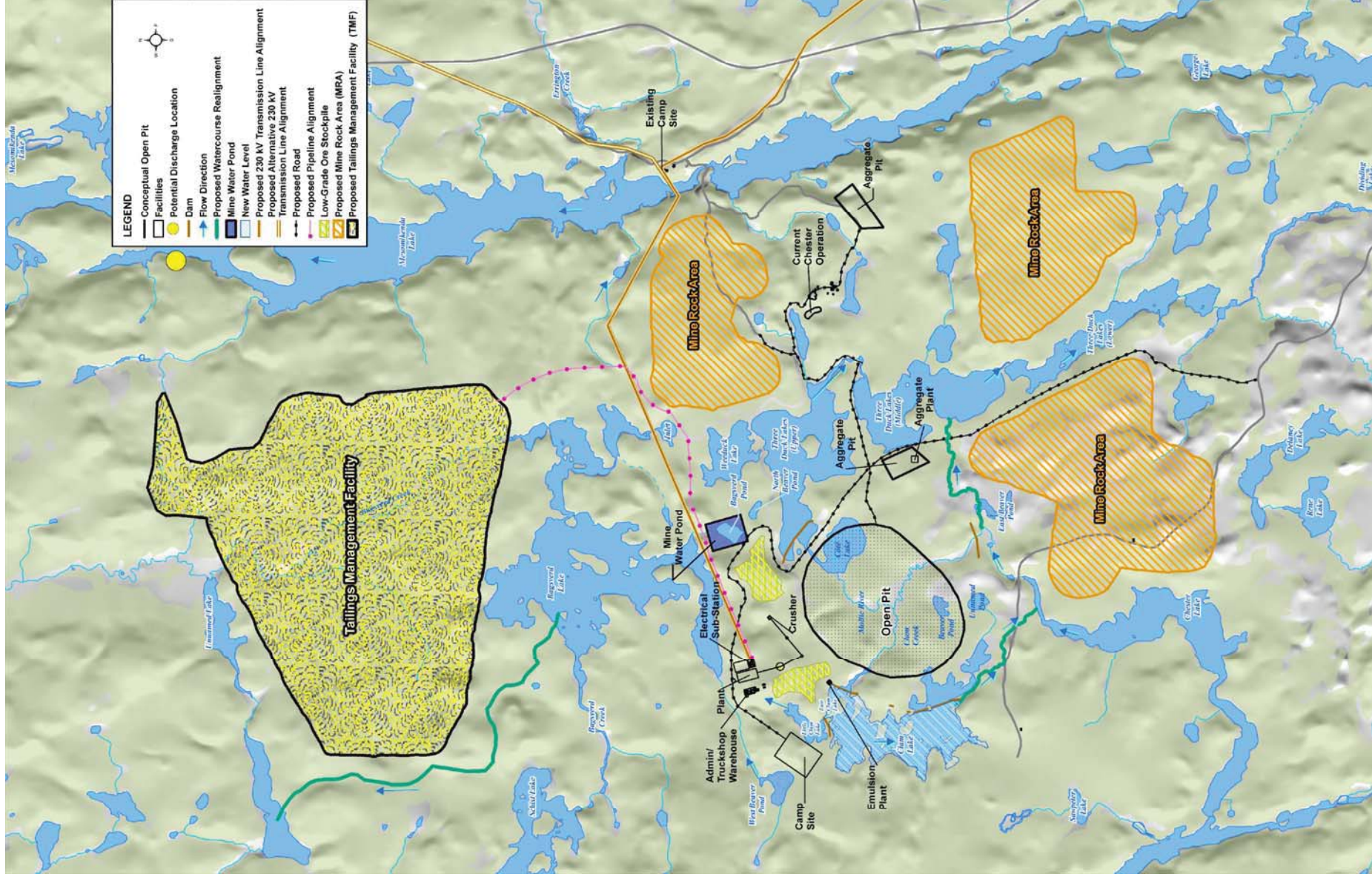
- **Previously owned by Trelawney; purchased by IAMGOLD in June 2012**
- **Located in Chester Township**
 - › Approx. 20 kilometres (km) southwest of Gogama
 - › Approx. 130 km south of Timmins and 170 km north of Sudbury
- **Prospecting/exploration in this area since 1900**
- **Project site would include the open pit, ore processing plant, mine rock areas, tailings management facility, camp and office buildings.**
- **Currently preparing a Pre-Feasibility Study. It is estimated that the open pit gold mine could:**
 - › Operate for 15 years
 - › Process 60,000 tonnes per day



Côté Gold Project: Preliminary Planning and Approvals Schedule



Preliminary Site Plan



Open Pit

■ Estimated Dimensions

- › Depth: approx. 650 metres deep
- › Surface area: approx. 210 hectares

■ Expected Production

- › Open pit mining rate is expected to be 60,000 tonnes per day

■ How would it be mined?

- › The benches in rock would be developed by blasting
- › Conventional shovel and truck type operation
- › Ore, mine rock and overburden removed from the open pit would be trucked to the surface
- › May include an In-pit Crushing and Conveying (IPCC) system
 - › Involves the use of crushing machinery that can be relocated to minimize the vertical haulage component carried out by the haul trucks



Typical haul truck



Rio Tinto, Palabora Open Pit

Mine Rock Areas

■ Project development is expected to generate:

- › Mine rock: 850 million tonnes
 - › 730 hectares by up to 100 metres high
- › Overburden: 20 million tonnes
 - › 150 hectares by up to 100 metres high

■ Use:

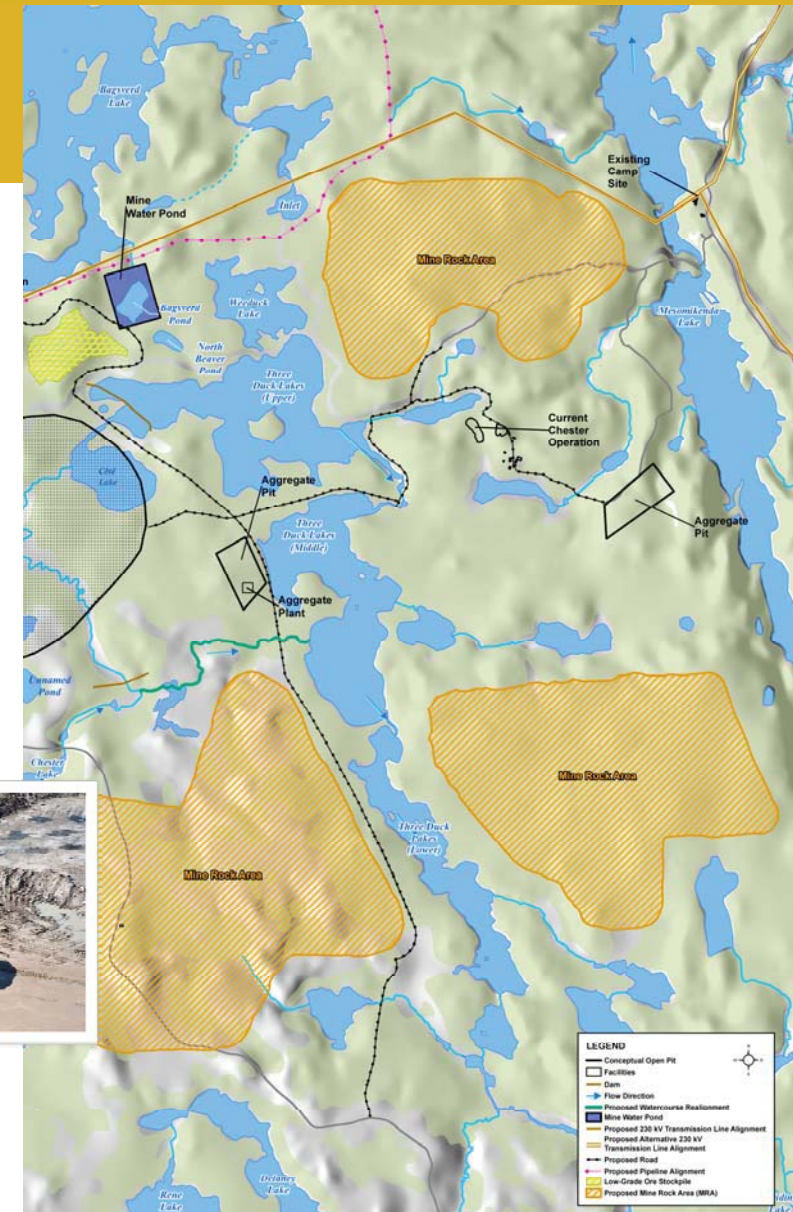
- › About 40 million tonnes of mine rock would be used in Project site construction and maintenance (i.e., dams and roads)
- › Some overburden would be used in final reclamation
- › Unused overburden and mine rock would be managed on the site

■ Environmental Impacts – Rock Analysis

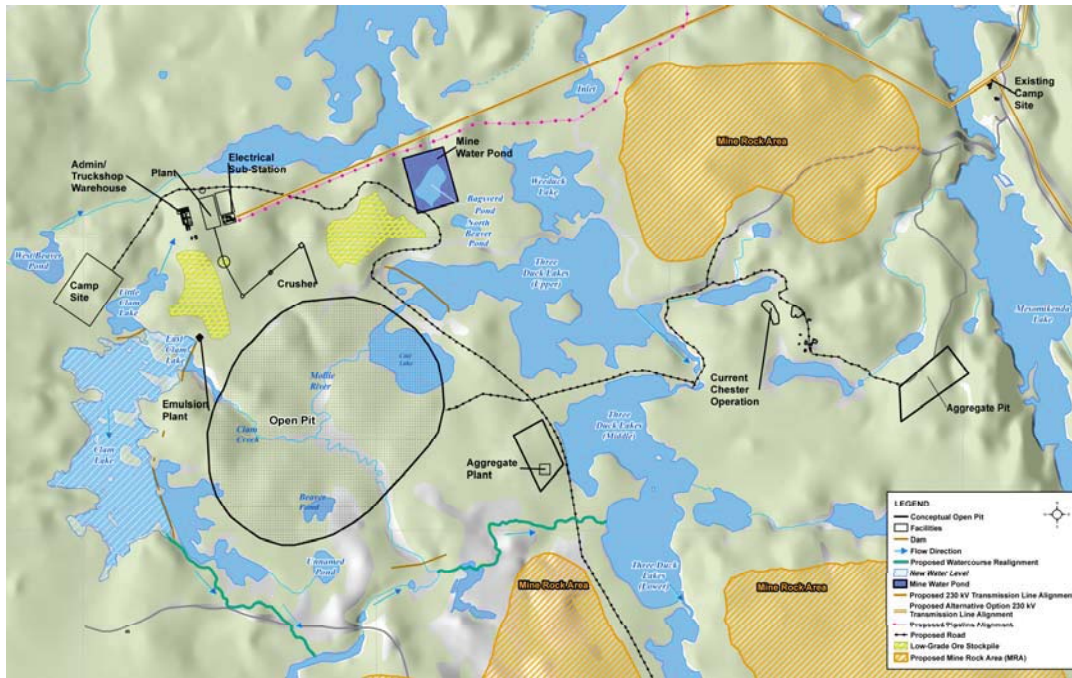
- › 70% not acid-generating, 10% potentially acid-generating, 20% uncertain
- › Further testing is underway to better characterize the rock
- › Any potentially acid-generating rock would be managed appropriately



Source: Detour Gold



Ore Processing Plant, Work Camp and Other Buildings



Ore Processing Plant

Area where gold is recovered from ore using metallurgical techniques



Storage Facility Ore Storage Dome



Accommodations Complex 1,200 workers during construction 500 full-time personnel during operation



Source for all images: Detour Gold

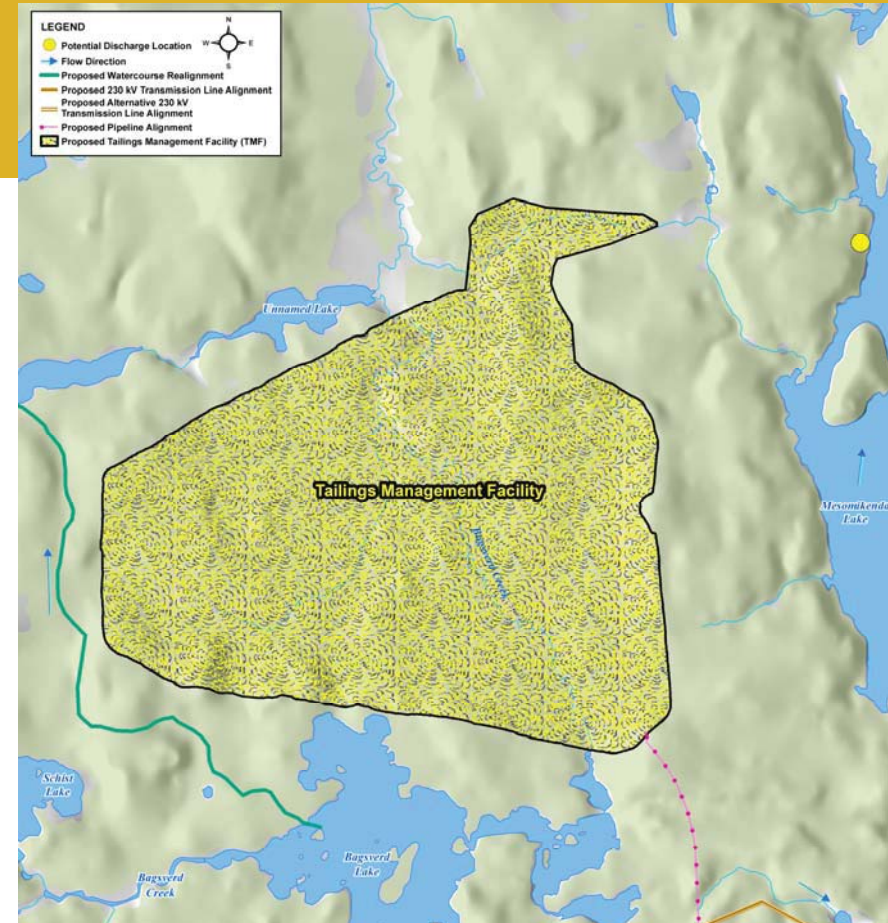
Tailings Management Facility (TMF)

■ What are tailings?

- › Tailings are the materials left over after removing the valuable fraction (i.e., gold)

■ What is the TMF?

- › Facility constructed to manage the tailings
- › Size: approx. 900 hectares
- › Storage capacity: approx. 330 million tonnes of tailings
- › Dams: constructed rockfill dams and naturally high bedrock surface
 - › Dam heights (maximum): 45 to 50 metres above ground surface
- › Water: a large portion of the excess water in the TMF would be recycled for process water
 - › Remaining water would be discharged through a polishing pond to surface water and would meet applicable Federal and Provincial effluent discharge standards
- › Closure: the TMF would be rehabilitated (for example re-vegetated) at closure based on the Ministry of Northern Development and Mines approved Closure Plan



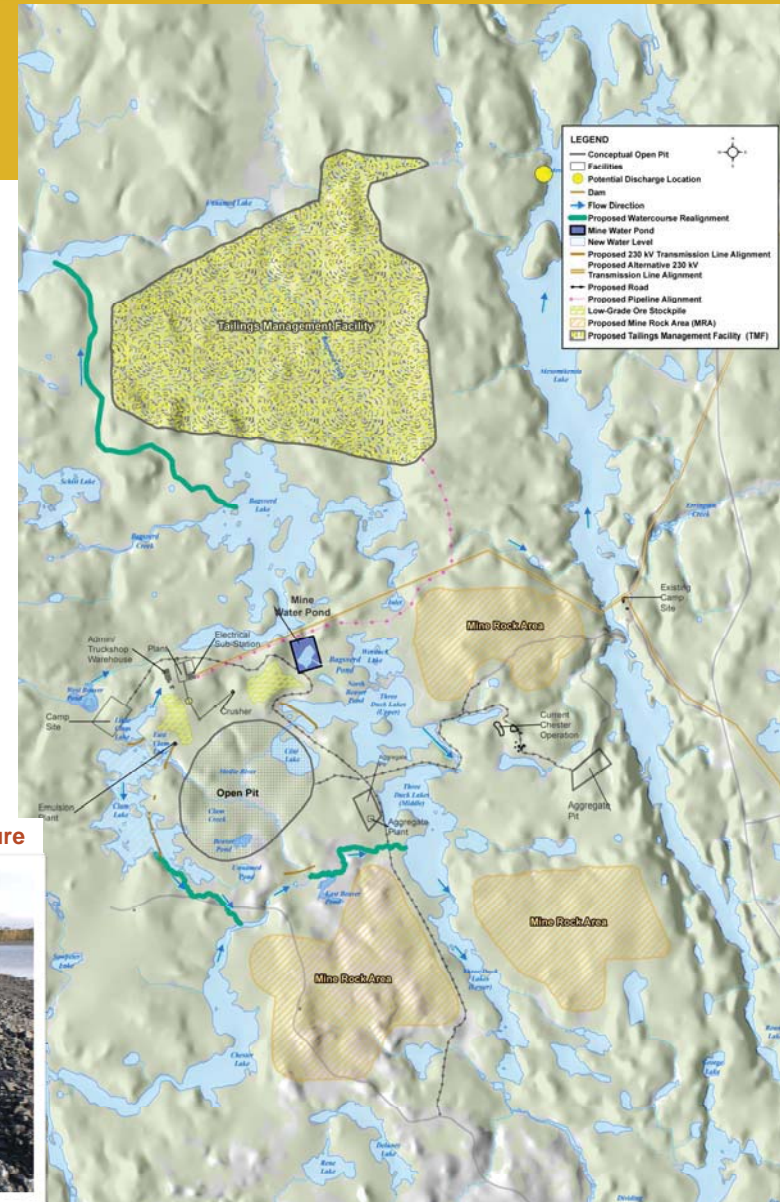
Examples of Tailings Management Facilities



Water Management Facilities

- **Purpose:**
 - › Maximize water reclaimed/recycled to the ore processing plant
 - › Minimize the effluent discharge points and amount discharged
 - › Optimize effluent quality so as to not adversely affect natural water systems
- **Site water flows that would be managed include:**
 - › mine water from the open pit
 - › water associated with the treated tailings effluent, as well as precipitation collected within the Tailings Management Facility
 - › water from truck wash bays and other minor sources
 - › runoff collected at the mine rock areas and low-grade ore stockpiles
 - › overburden seepage from pit perimeter ditch
 - › treated domestic sewage water
 - › general site area runoff and seepage

Example of water management structure

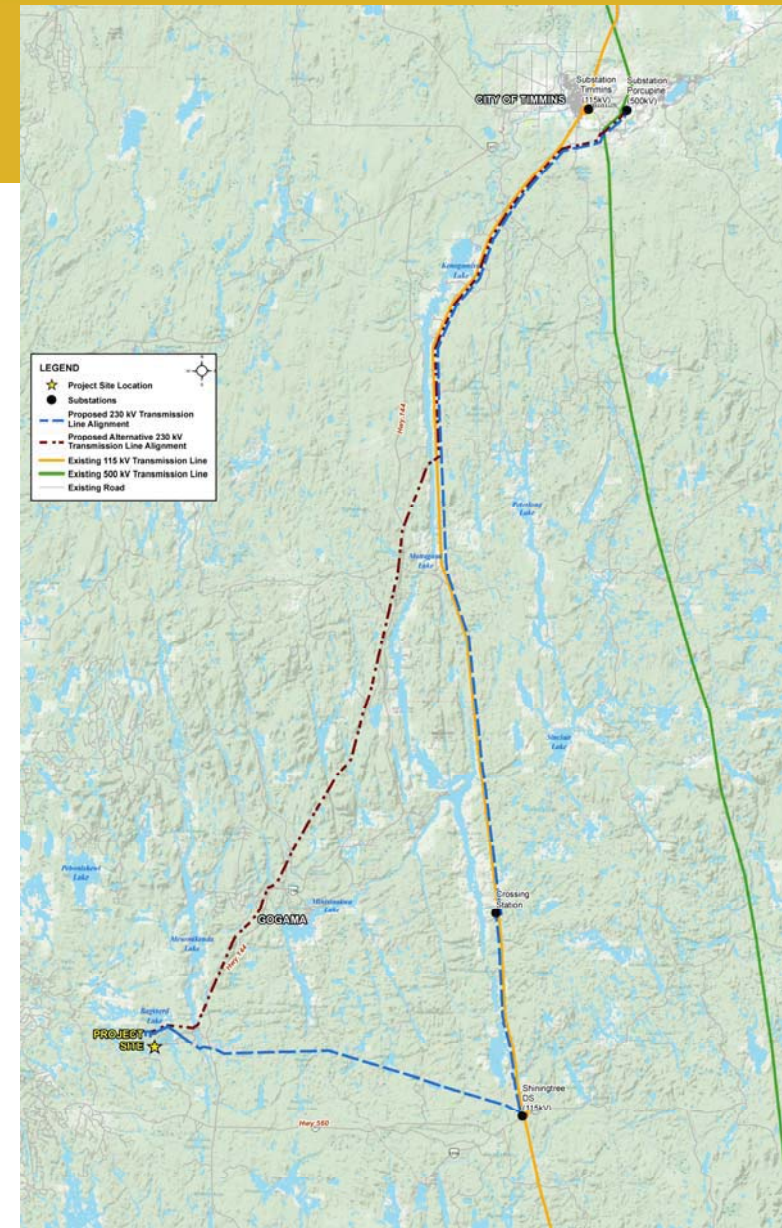


Power Transmission Line

- **Power for Project operations would be powered by a new 230 kilovolt transmission line connected to the existing HydroOne Network in Timmins at the Porcupine Substation**
- **Proposed alignment**
 - First segment, approx. 120 kilometres long, would parallel an existing 115 kilovolt transmission line from Timmins to Shining Tree
 - Second segment, approx. 40 kilometres long, would be constructed within an existing right-of-way from the Shining Tree Substation to the Project site
- **Proposed alternative alignment**
 - More direct (shorter) route (cross-country) is being evaluated and may be incorporated into the environmental assessment if the evaluation looks promising



Source: Detour Gold



Environmental Assessment

■ What is an environmental assessment?

- › It is a planning and decision-making tool. The objectives of an environmental assessment are to:
 - › minimize or avoid adverse environmental effects before they occur
 - › incorporate environmental factors into decision making
- › Consultation is an important aspect of the environmental assessment process. Members of the public can participate at various stages of the environmental assessment process.

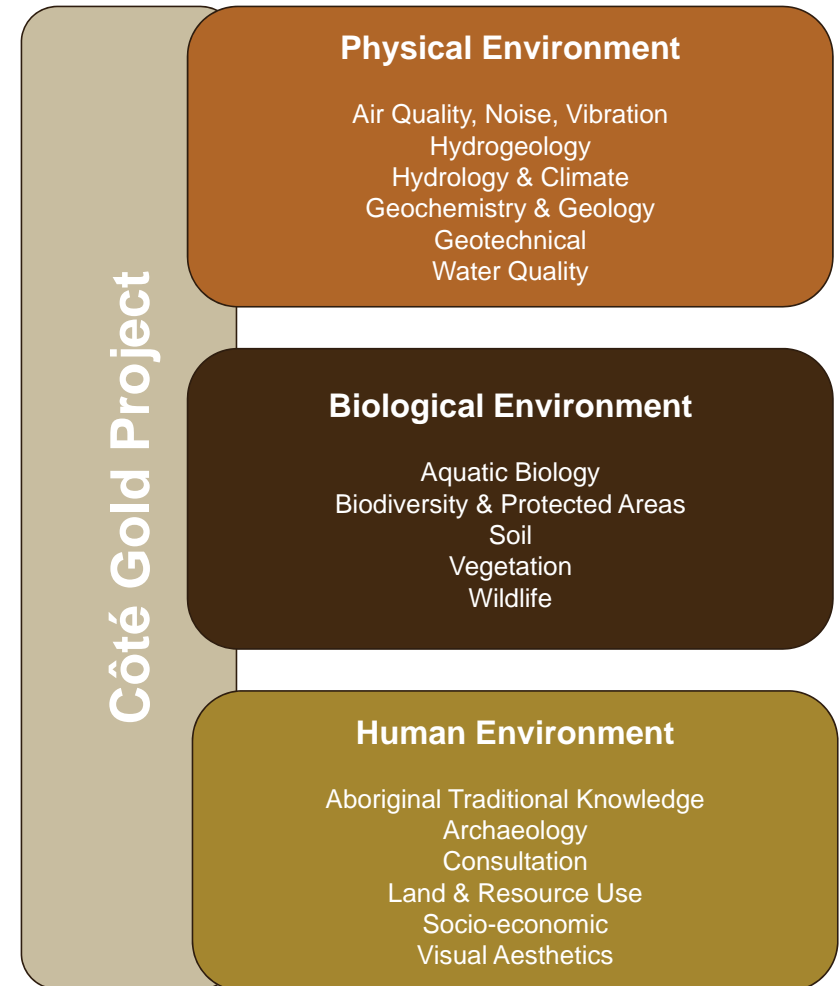
■ Project anticipated to require a Federal environmental assessment under the *Canadian Environmental Assessment Act, 2012*.

- › The Federal "Regulation Designating Physical Activities" identifies the physical activities that make up the designated projects that could require a Federal environmental assessment
 - › For more information on the Federal environmental assessment visit the Canadian Environmental Assessment Agency website
<http://www.ceaa-acee.gc.ca/>
- ## ■ Several aspects of the Project are anticipated to require completion of Provincial environmental assessment(s) including:
1. Construction and operation of a 230 kilovolt transmission line
 2. Potential disposition of Crown resources



Managing Environmental Effects

- The environmental assessment will be based on the proposed Project, existing environmental conditions, regulatory requirements and proposed mitigation measures
- Evaluation of Project effects in the physical, biological and human environments
- Includes the following steps:
 - › Prediction of the effects of the Project on the physical and biological environment , effects on Aboriginal peoples as well as the socio-economic conditions
 - › Evaluation of Project alternatives, management practices and mitigation measures which would avoid or minimize adverse Project effects and enhance positive effects
 - › Determination of the level of significance of each potential effects that remains after the application of the proposed mitigation measures



Côté Gold Project: Consultation

Aboriginal, Stakeholders and Government

First Nation and Métis groups (as identified by Federal and Provincial governments)

Gogama and other regional communities (Sudbury, Timmins)

Provincial and federal governments

Neighbours and adjacent land owners (Mesomikenda cottagers, mining interests, trappers, hunters)

Interested stakeholders (Economic development agencies, businesses, forestry companies,

Non-governmental environmental organizations (Northwatch, Mining Watch Canada)

Consultation Activities and Information Sources

Meetings and open houses

Site tours

Newsletters/Newspaper notices

Project website (www.iamgold.com)

Direct mail/e-mail to project mailing list



Côté Gold Project: Local Partnerships and Employment

- Exploration Agreement with local First Nations
- Currently employs 50 people at the Côté Gold Project site; half of whom live in Gogama and surrounding communities
- Local contracts in place for services such as: hauling, clearing brush, making roads, pipe fusing, making core boxes, and carpenters
- IAMGOLD anticipates to employ approx. 1,200 workers during the construction phase and approx. 500 workers during the operations phase of the Project



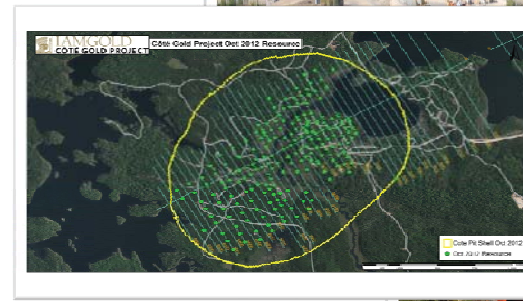
Côté Gold Project: Current Activities on Site

■ Drilling

- › Continue to define the resource
- › Drill program is down from a peak of 13 drills and will continue through the winter with a limited number of drills

■ Additional Baseline Work

- › Aboriginal traditional knowledge and land use
- › Air Quality
- › Archaeology
- › Aquatics and Terrestrial
- › Geochemistry
- › Groundwater and Surface Water
- › Socio-economics
- › Visual Aesthetics



Côté Gold Project: Future Activities

■ Environmental Assessments

- › Federal environmental assessment
 - › Draft Project Description submitted to federal government agencies on February 1, 2013
 - › Final Project Description is to be submitted to federal government agencies in March 2013
- › Provincial environmental assessment for a 230 kilovolt transmission line
 - › Coordinating with the provincial representatives to determine which process will be followed
 - › Anticipating commencement of an Individual Environmental Assessment in March 2013
- › Several things still in consideration including:
 - › Location of facilities
 - › Water management
 - › Transmission line

■ Continue exploration drilling over the winter of 2013

■ Engage and consult with Aboriginal people, regional communities and stakeholders



Côté Gold Project: Community and Environment Team

Steve Letwin

President & Chief Executive Officer

Bob Carreau

Senior Vice President Health, Safety
and Sustainability

Aaron Steeghs

Manager, Corporate Social
Responsibility

Steven Woolfenden

Manager, Corporate Environmental
Assessment and Approvals

Cheryl Naveau

First Nation Liaison and Public
Relations

Dave Brown

Manager, Environmental Services

Bruce Peters

Manager, Infrastructure and Logistics



Côté Gold Project: Participate!

- **Your concerns about the Côté Gold Project are important to us.**
- **How do you want to be involved?**
- **Are there others who should be involved?**
- **Learn More: www.iamgold.com**
- **Contact Us . . .**
 - › **Cheryl Naveau**
First Nation Liaison and Public Relations
Tel: 705-269-0010 ext 205
E-mail: Cheryl_Naveau@iamgold.com
 - › **Aaron Steeghs**
Manager, Corporate Social Responsibility
Tel: 416-933-4961
E-mail: Aaron_Steeghs@iamgold.com



Côté Gold Project: Participate!

- **Your concerns about the Côté Gold Project are important to us.**
- **How do you want to be involved?**
- **Are there others who should be involved?**
- **Learn More: www.iamgold.com**
- **Contact Us . . .**
 - › **Steven Woolfenden**
Manager, Corporate Environmental Assessment and Approvals
Tel: 416-594-2884
E-mail: Steven_Woolfenden@iamgold.com
 - › **Cheryl Naveau**
First Nation Liaison and Public Relations
Tel: 705-269-0010 ext 205
E-mail: Cheryl_Naveau@iamgold.com



APPENDIX C
COMMENT FORMS (COMPLETED)

FEEDBACK FORM

**Côte Gold Project
Flying Post First Nation**

Open House February 13, 2013

Did the Open House meet your information needs?

Yes No

If not, what other information would you like to better understand the Project?

Do you have any information that might be relevant to the proposed mine area?

no

Do you have any comments, concerns or suggestions related to the draft Project Description for the Côte Gold Project?

no

How would you like to receive future information about the Côté Gold Project?

- Open Houses
- Direct Mail
- Email
- Other _____
- Website
- News Media
- In-person discussion with IAMGOLD representatives

Additional Questions/Comments (if you would like a reply be sure to provide your contact information):

NA

Optional Contact Information (please print)

Name	
Street Address	
Town/City	
Postal Code	
Email	
Phone	
Organization (if applicable)	

Information will be collected and used solely for the purpose of assisting IAMGOLD Corporation in meeting environmental assessment requirements. This material will be maintained on file for use during the study and may be included in project documentation. All comments will become part of the public record. Personal information is protected under authority of the Freedom of Information and Protection of Privacy Act, Section 32, and is used solely for the purpose of completing this environmental assessment. Individuals will not be identified in any public documents or used for any purpose other than this project.

THANK YOUR FOR YOUR FEEDBACK

IAMGOLD CORPORATION
Côté Gold Project
 3 Mesomikenda Lake Road
 P.O. Box 100
 Gogama, ON P0M 1W0

FEEDBACK FORM

**Côte Gold Project
Flying Post First Nation**

Open House February 13, 2013

Did the Open House meet your information needs?

Yes No

If not, what other information would you like to better understand the Project?

Do you have any information that might be relevant to the proposed mine area?

Do you have any comments, concerns or suggestions related to the draft Project Description for the Côte Gold Project?

How would you like to receive future information about the Côté Gold Project?

- | | |
|--------------------------------------|---|
| <input type="checkbox"/> Open Houses | <input type="checkbox"/> Website |
| <input type="checkbox"/> Direct Mail | <input type="checkbox"/> News Media |
| <input type="checkbox"/> Email | <input checked="" type="checkbox"/> In-person discussion with IAMGOLD representatives |
| <input type="checkbox"/> Other _____ | |

Additional Questions/Comments (if you would like a reply be sure to provide your contact information):

Optional Contact Information (please print)

Information will be collected and used solely for the purpose of assisting IAMGOLD Corporation in meeting environmental assessment requirements. This material will be maintained on file for use during the study and may be included in project documentation. All comments will become part of the public record. Personal information is protected under authority of the Freedom of Information and Protection of Privacy Act, Section 32, and is used solely for the purpose of completing this environmental assessment. Individuals will not be identified in any public documents or used for any purpose other than this project.

THANK YOUR FOR YOUR FEEDBACK

IAMGOLD CORPORATION
Côté Gold Project
3 Mesomikenda Lake Road
P.O. Box 100
Gogama, ON P0M 1W0

FEEDBACK FORM

**Côte Gold Project
Flying Post First Nation**

Open House February 13, 2013

Did the Open House meet your information needs?

Yes No

If not, what other information would you like to better understand the Project?

Do you have any information that might be relevant to the proposed mine area?

Do you have any comments, concerns or suggestions related to the draft Project Description for the Côte Gold Project?

They answered all of my environmental questions.

How would you like to receive future information about the Côté Gold Project?

- | | |
|--------------------------------------|--|
| <input type="checkbox"/> Open Houses | <input checked="" type="checkbox"/> Website |
| <input type="checkbox"/> Direct Mail | <input type="checkbox"/> News Media |
| <input type="checkbox"/> Email | <input type="checkbox"/> In-person discussion with IAMGOLD representatives |
| <input type="checkbox"/> Other _____ | |

Additional Questions/Comments (if you would like a reply be sure to provide your contact information):

Optional Contact Information (please print)



Information will be collected and used solely for the purpose of assisting IAMGOLD Corporation in meeting environmental assessment requirements. This material will be maintained on file for use during the study and may be included in project documentation. All comments will become part of the public record. Personal information is protected under authority of the Freedom of Information and Protection of Privacy Act, Section 32, and is used solely for the purpose of completing this environmental assessment. Individuals will not be identified in any public documents or used for any purpose other than this project.

THANK YOUR FOR YOUR FEEDBACK

IAMGOLD CORPORATION
Côté Gold Project
3 Mesomikenda Lake Road
P.O. Box 100
Gogama, ON P0M 1W0

FEEDBACK FORM

**Côte Gold Project
Flying Post First Nation**

Open House February 13, 2013

Did the Open House meet your information needs?

Yes No

If not, what other information would you like to better understand the Project?

Do you have any information that might be relevant to the proposed mine area?

Do you have any comments, concerns or suggestions related to the draft Project Description for the Côte Gold Project?

More openhouses - information concerning
job opportunities with contractors.

How would you like to receive future information about the Côté Gold Project?

- | | |
|---|--|
| <input type="checkbox"/> Open Houses | <input type="checkbox"/> Website |
| <input checked="" type="checkbox"/> Direct Mail | <input type="checkbox"/> News Media |
| <input checked="" type="checkbox"/> Email | <input type="checkbox"/> In-person discussion with IAMGOLD representatives |
| <input type="checkbox"/> Other _____ | |

Additional Questions/Comments (if you would like a reply be sure to provide your contact information):

Optional Contact Information (please print)

Information will be collected and used solely for the purpose of assisting IAMGOLD Corporation in meeting environmental assessment requirements. This material will be maintained on file for use during the study and may be included in project documentation. All comments will become part of the public record. Personal information is protected under authority of the Freedom of Information and Protection of Privacy Act, Section 32, and is used solely for the purpose of completing this environmental assessment. Individuals will not be identified in any public documents or used for any purpose other than this project.

THANK YOUR FOR YOUR FEEDBACK

IAMGOLD CORPORATION
Côté Gold Project
3 Mesomikenda Lake Road
P.O. Box 100
Gogama, ON P0M 1W0

FEEDBACK FORM

**Côte Gold Project
Flying Post First Nation**

Open House February 13, 2013

Did the Open House meet your information needs?

Yes No

If not, what other information would you like to better understand the Project?

Do you have any information that might be relevant to the proposed mine area?

Do you have any comments, concerns or suggestions related to the draft Project Description for the Côte Gold Project?

Not at this time

How would you like to receive future information about the Côté Gold Project?

- | | |
|---|--|
| <input type="checkbox"/> Open Houses | <input type="checkbox"/> Website |
| <input type="checkbox"/> Direct Mail | <input type="checkbox"/> News Media |
| <input checked="" type="checkbox"/> Email | <input type="checkbox"/> In-person discussion with IAMGOLD representatives |
| <input type="checkbox"/> Other _____ | |

Additional Questions/Comments (if you would like a reply be sure to provide your contact information):

Optional Contact Information (please print)

Information will be collected and used solely for the purpose of assisting IAMGOLD Corporation in meeting environmental assessment requirements. This material will be maintained on file for use during the study and may be included in project documentation. All comments will become part of the public record. Personal information is protected under authority of the Freedom of Information and Protection of Privacy Act, Section 32, and is used solely for the purpose of completing this environmental assessment. Individuals will not be identified in any public documents or used for any purpose other than this project.

THANK YOUR FOR YOUR FEEDBACK

IAMGOLD CORPORATION
Côté Gold Project
3 Mesomikenda Lake Road
P.O. Box 100
Gogama, ON P0M 1W0

FEEDBACK FORM

**Côte Gold Project
Flying Post First Nation**

Open House February 13, 2013

Did the Open House meet your information needs?

Yes No

If not, what other information would you like to better understand the Project?

Do you have any information that might be relevant to the proposed mine area?

Do you have any comments, concerns or suggestions related to the draft Project Description for the Côte Gold Project?

How would you like to receive future information about the Côté Gold Project?

- | | |
|---|--|
| <input type="checkbox"/> Open Houses | <input type="checkbox"/> Website |
| <input checked="" type="checkbox"/> Direct Mail | <input type="checkbox"/> News Media |
| <input type="checkbox"/> Email | <input type="checkbox"/> In-person discussion with IAMGOLD representatives |
| <input type="checkbox"/> Other _____ | |

Additional Questions/Comments (if you would like a reply be sure to provide your contact information):

Optional Contact Information (please print)

Information will be collected and used solely for the purpose of assisting IAMGOLD Corporation in meeting environmental assessment requirements. This material will be maintained on file for use during the study and may be included in project documentation. All comments will become part of the public record. Personal information is protected under authority of the Freedom of Information and Protection of Privacy Act, Section 32, and is used solely for the purpose of completing this environmental assessment. Individuals will not be identified in any public documents or used for any purpose other than this project.

THANK YOUR FOR YOUR FEEDBACK

IAMGOLD CORPORATION
Côté Gold Project
3 Mesomikenda Lake Road
P.O. Box 100
Gogama, ON P0M 1W0

FEEDBACK FORM

**Côte Gold Project
Flying Post First Nation**

Open House February 13, 2013

Did the Open House meet your information needs?

Yes No

If not, what other information would you like to better understand the Project?

*How will creeks run! From A-B-C. if you Remove
the lake.*

Do you have any information that might be relevant to the proposed mine area?

not at this time

Do you have any comments, concerns or suggestions related to the draft Project Description for the Côte Gold Project?

How would you like to receive future information about the Côté Gold Project?

- Open Houses
- Direct Mail
- Email
- Other _____
- Website
- News Media
- In-person discussion with IAMGOLD representatives

Additional Questions/Comments (if you would like a reply be sure to provide your contact information):

Optional Contact Information (please print)

Name	
Street Address	
Town/City	
Postal Code	
Email	
Phone	
Organization (if applicable)	

Information will be collected and used solely for the purpose of assisting IAMGOLD Corporation in meeting environmental assessment requirements. This material will be maintained on file for use during the study and may be included in project documentation. All comments will become part of the public record. Personal information is protected under authority of the Freedom of Information and Protection of Privacy Act, Section 32, and is used solely for the purpose of completing this environmental assessment. Individuals will not be identified in any public documents or used for any purpose other than this project.

THANK YOUR FOR YOUR FEEDBACK

IAMGOLD CORPORATION
Côté Gold Project
 3 Mesomikenda Lake Road
 P.O. Box 100
 Gogama, ON P0M 1W0

FEEDBACK FORM

**Côte Gold Project
Flying Post First Nation**

Open House February 13, 2013

Did the Open House meet your information needs?

Yes No

If not, what other information would you like to better understand the Project?

Do you have any information that might be relevant to the proposed mine area?

No

Do you have any comments, concerns or suggestions related to the draft Project Description for the Côte Gold Project?

NO



How would you like to receive future information about the Côté Gold Project?

Open Houses

Website

Direct Mail

News Media

Email

In-person discussion with IAMGOLD representatives

Other _____

Additional Questions/Comments (if you would like a reply be sure to provide your contact information):

Optional Contact Information (please print)

Name	
Street Address	
Town/City	
Postal Code	
Email	
Phone	
Organization (if applicable)	

Information will be collected and used solely for the purpose of assisting IAMGOLD Corporation in meeting environmental assessment requirements. This material will be maintained on file for use during the study and may be included in project documentation. All comments will become part of the public record. Personal information is protected under authority of the Freedom of Information and Protection of Privacy Act, Section 32, and is used solely for the purpose of completing this environmental assessment. Individuals will not be identified in any public documents or used for any purpose other than this project.

THANK YOUR FOR YOUR FEEDBACK

IAMGOLD CORPORATION
Côté Gold Project
3 Mesomikenda Lake Road
P.O. Box 100
Gogama, ON P0M 1W0



FEEDBACK FORM

**Côté Gold Project
Flying Post First Nation**

Open House February 13, 2013

Did the Open House meet your information needs?

Yes No

If not, what other information would you like to better understand the Project?

Do you have any information that might be relevant to the proposed mine area?

Do you have any comments, concerns or suggestions related to the draft Project Description for the Côté Gold Project?

How would you like to receive future information about the Côté Gold Project?

- Open Houses
- Direct Mail
- Email
- Other _____
- Website
- News Media
- In-person discussion with IAMGOLD representatives

Additional Questions/Comments (if you would like a reply be sure to provide your contact information):

More training opportunities explained - how to go about applying.

Optional Contact Information (please print)

Name	
Street Address	
Town/City	
Postal Code	
Email	
Phone	
Organization (if applicable)	

Information will be collected and used solely for the purpose of assisting IAMGOLD Corporation in meeting environmental assessment requirements. This material will be maintained on file for use during the study and may be included in project documentation. All comments will become part of the public record. Personal information is protected under authority of the Freedom of Information and Protection of Privacy Act, Section 32, and is used solely for the purpose of completing this environmental assessment. Individuals will not be identified in any public documents or used for any purpose other than this project.

THANK YOUR FOR YOUR FEEDBACK

IAMGOLD CORPORATION
Côté Gold Project
 3 Mesomikenda Lake Road
 P.O. Box 100
 Gogama, ON P0M 1W0



FEEDBACK FORM

**Côte Gold Project
Flying Post First Nation**

Open House February 13, 2013

Did the Open House meet your information needs?

Yes No

If not, what other information would you like to better understand the Project?

Do you have any information that might be relevant to the proposed mine area?

Do you have any comments, concerns or suggestions related to the draft Project Description for the Côte Gold Project?

James Watt

How would you like to receive future information about the Côté Gold Project?

- | | |
|---|--|
| <input type="checkbox"/> Open Houses | <input type="checkbox"/> Website |
| <input checked="" type="checkbox"/> Direct Mail | <input type="checkbox"/> News Media |
| <input checked="" type="checkbox"/> Email | <input type="checkbox"/> In-person discussion with IAMGOLD representatives |
| <input type="checkbox"/> Other _____ | |

Additional Questions/Comments (if you would like a reply be sure to provide your contact information):

Optional Contact Information (please print)

Information will be collected and used solely for the purpose of assisting IAMGOLD Corporation in meeting environmental assessment requirements. This material will be maintained on file for use during the study and may be included in project documentation. All comments will become part of the public record. Personal information is protected under authority of the Freedom of Information and Protection of Privacy Act, Section 32, and is used solely for the purpose of completing this environmental assessment. Individuals will not be identified in any public documents or used for any purpose other than this project.

THANK YOUR FOR YOUR FEEDBACK

IAMGOLD CORPORATION
Côté Gold Project
3 Mesomikenda Lake Road
P.O. Box 100
Gogama, ON P0M 1W0

FEEDBACK FORM

**Côte Gold Project
Flying Post First Nation**

Open House February 13, 2013

Did the Open House meet your information needs?

Yes No

If not, what other information would you like to better understand the Project?

Do you have any information that might be relevant to the proposed mine area?

Do you have any comments, concerns or suggestions related to the draft Project Description for the Côte Gold Project?

How would you like to receive future information about the Côté Gold Project?

- Open Houses
- Direct Mail
- Email
- Other _____
- Website
- News Media
- In-person discussion with IAMGOLD representatives

Additional Questions/Comments (if you would like a reply be sure to provide your contact information):

Optional Contact Information (please print)

Information will be collected and used solely for the purpose of assisting IAMGOLD Corporation in meeting environmental assessment requirements. This material will be maintained on file for use during the study and may be included in project documentation. All comments will become part of the public record. Personal information is protected under authority of the Freedom of Information and Protection of Privacy Act, Section 32, and is used solely for the purpose of completing this environmental assessment. Individuals will not be identified in any public documents or used for any purpose other than this project.

THANK YOUR FOR YOUR FEEDBACK

IAMGOLD CORPORATION
Côté Gold Project
3 Mesomikenda Lake Road
P.O. Box 100
Gogama, ON P0M 1W0

FEEDBACK FORM

**Côté Gold Project
Flying Post First Nation**

Open House February 13, 2013

Did the Open House meet your information needs?

Yes No

If not, what other information would you like to better understand the Project?

Do you have any information that might be relevant to the proposed mine area?

Do you have any comments, concerns or suggestions related to the draft Project Description for the Côté Gold Project?

How would you like to receive future information about the Côté Gold Project?

- | | |
|---|---|
| <input type="checkbox"/> Open Houses | <input type="checkbox"/> Website |
| <input checked="" type="checkbox"/> Direct Mail | <input type="checkbox"/> News Media |
| <input checked="" type="checkbox"/> Email | <input checked="" type="checkbox"/> In-person discussion with IAMGOLD representatives |
| <input type="checkbox"/> Other _____ | |

Additional Questions/Comments (if you would like a reply be sure to provide your contact information):

Optional Contact Information (please print)

Information will be collected and used solely for the purpose of assisting IAMGOLD Corporation in meeting environmental assessment requirements. This material will be maintained on file for use during the study and may be included in project documentation. All comments will become part of the public record. Personal information is protected under authority of the Freedom of Information and Protection of Privacy Act, Section 32, and is used solely for the purpose of completing this environmental assessment. Individuals will not be identified in any public documents or used for any purpose other than this project.

THANK YOUR FOR YOUR FEEDBACK

IAMGOLD CORPORATION
Côté Gold Project
3 Mesomikenda Lake Road
P.O. Box 100
Gogama, ON P0M 1W0

FEEDBACK FORM

**Côté Gold Project
Flying Post First Nation**

Open House February 13, 2013

Did the Open House meet your information needs?

Yes No

If not, what other information would you like to better understand the Project?

Do you have any information that might be relevant to the proposed mine area?

Do you have any comments, concerns or suggestions related to the draft Project Description for the Côté Gold Project?

How would you like to receive future information about the Côté Gold Project?

- | | |
|---|--|
| <input type="checkbox"/> Open Houses | <input type="checkbox"/> Website |
| <input type="checkbox"/> Direct Mail | <input type="checkbox"/> News Media |
| <input checked="" type="checkbox"/> Email | <input type="checkbox"/> In-person discussion with IAMGOLD representatives |
| <input type="checkbox"/> Other _____ | |

Additional Questions/Comments (if you would like a reply be sure to provide your contact information):

Optional Contact Information (please print)

Information will be collected and used solely for the purpose of assisting IAMGOLD Corporation in meeting environmental assessment requirements. This material will be maintained on file for use during the study and may be included in project documentation. All comments will become part of the public record. Personal information is protected under authority of the Freedom of Information and Protection of Privacy Act, Section 32, and is used solely for the purpose of completing this environmental assessment. Individuals will not be identified in any public documents or used for any purpose other than this project.

THANK YOUR FOR YOUR FEEDBACK

IAMGOLD CORPORATION
Côté Gold Project
3 Mesomikenda Lake Road
P.O. Box 100
Gogama, ON P0M 1W0

FEEDBACK FORM

**Côte Gold Project
Mattagami First Nation**

Open House February 20, 2013

Did the Open House meet your information needs?

Yes

No

If not, what other information would you like to better understand the Project?

MORE INFO

Do you have any information that might be relevant to the proposed mine area?

NO REALLY

Do you have any comments, concerns or suggestions related to the draft Project Description for the Côte Gold Project?

WATER WAYS + TAILINGS

How would you like to receive future information about the Côté Gold Project?

- | | |
|---|--|
| <input type="checkbox"/> Open Houses | <input type="checkbox"/> Website |
| <input type="checkbox"/> Direct Mail | <input type="checkbox"/> News Media |
| <input checked="" type="checkbox"/> Email | <input type="checkbox"/> In-person discussion with IAMGOLD representatives |
| <input type="checkbox"/> Other _____ | |

Additional Questions/Comments (if you would like a reply be sure to provide your contact information):

Optional Contact Information (please print)



Information will be collected and used solely for the purpose of assisting IAMGOLD Corporation in meeting environmental assessment requirements. This material will be maintained on file for use during the study and may be included in project documentation. All comments will become part of the public record. Personal information is protected under authority of the Freedom of Information and Protection of Privacy Act, Section 32, and is used solely for the purpose of completing this environmental assessment. Individuals will not be identified in any public documents or used for any purpose other than this project.

THANK YOUR FOR YOUR FEEDBACK

IAMGOLD CORPORATION
Côté Gold Project
3 Mesomikenda Lake Road
P.O. Box 100
Gogama, ON P0M 1W0

FEEDBACK FORM

**Côté Gold Project
Mattagami First Nation**

Open House February 20, 2013

Did the Open House meet your information needs?

Yes No - SOME

If not, what other information would you like to better understand the Project?

- NO DRAFT'S FOR AGEEMENT'S FOR ENVUROMENT
- I. B. A. - DRAFT
- BUSINESS #'S AND JOB'S
- BUSINESS #'S / EXSTENSION'S
- JOB POSITION

Do you have any information that might be relevant to the proposed mine area?

- MORE INFO PACKAGE'S RELATED TO
DISCUSSION.

Do you have any comments, concerns or suggestions related to the draft Project Description for the Côté Gold Project?

- MORE SENIOR MANAGEMENT, SHOULD BE
AT THESE SESSION'S.
- OPERATING MANAGMENT FOR GOLD
PRODUCEING.

How would you like to receive future information about the Côté Gold Project?

- | | |
|---|---|
| <input checked="" type="checkbox"/> Open Houses | <input type="checkbox"/> Website |
| <input checked="" type="checkbox"/> Direct Mail | <input type="checkbox"/> News Media |
| <input type="checkbox"/> Email | <input checked="" type="checkbox"/> In-person discussion with IAMGOLD representatives |
| <input type="checkbox"/> Other _____ | |

Additional Questions/Comments (if you would like a reply be sure to provide your contact information):

LEGAL TEAM, WHO?

Optional Contact Information (please print)



Information will be collected and used solely for the purpose of assisting IAMGOLD Corporation in meeting environmental assessment requirements. This material will be maintained on file for use during the study and may be included in project documentation. All comments will become part of the public record. Personal information is protected under authority of the Freedom of Information and Protection of Privacy Act, Section 32, and is used solely for the purpose of completing this environmental assessment. Individuals will not be identified in any public documents or used for any purpose other than this project.

THANK YOUR FOR YOUR FEEDBACK

IAMGOLD CORPORATION
Côté Gold Project
3 Mesomikenda Lake Road
P.O. Box 100
Gogama, ON P0M 1W0

FEEDBACK FORM

**Côte Gold Project
Mattagami First Nation**

Open House February 20, 2013

Did the Open House meet your information needs?

Yes No

If not, what other information would you like to better understand the Project?

Do you have any information that might be relevant to the proposed mine area?

Do you have any comments, concerns or suggestions related to the draft Project Description for the Côte Gold Project?

① Environment = of non-contaminated waters = greatest concern.

② For people that don't drive, would maybe a Shuttle Bus, be available for workers from Mattagami First Nation

↓
No travel, of course depending on how many employees would come from M.F.N.

How would you like to receive future information about the Côté Gold Project?

- | | |
|---|--|
| <input type="checkbox"/> Open Houses | <input type="checkbox"/> Website |
| <input type="checkbox"/> Direct Mail | <input type="checkbox"/> News Media |
| <input checked="" type="checkbox"/> Email | <input type="checkbox"/> In-person discussion with IAMGOLD representatives |
| <input type="checkbox"/> Other _____ | |

Additional Questions/Comments (if you would like a reply be sure to provide your contact information):

Would Aboriginal people, would be first, for job openings, upon availability?
Would training also be available, if needed, through "I Am Gold"?

Optional Contact Information (please print)



Information will be collected and used solely for the purpose of assisting IAMGOLD Corporation in meeting environmental assessment requirements. This material will be maintained on file for use during the study and may be included in project documentation. All comments will become part of the public record. Personal information is protected under authority of the Freedom of Information and Protection of Privacy Act, Section 32, and is used solely for the purpose of completing this environmental assessment. Individuals will not be identified in any public documents or used for any purpose other than this project.

THANK YOUR FOR YOUR FEEDBACK

IAMGOLD CORPORATION
Côté Gold Project
3 Mesomikenda Lake Road
P.O. Box 100
Gogama, ON P0M 1W0

APPENDIX D
MEETING NOTES

Meeting Notes Côté Gold Project

Flying Post First Nation Community Open House and Presentation Nipigon Community Centre 138 Wadsworth Drive Nipigon, ON

February 13, 2013

Attendees:

IAMGOLD Corporation: Dave Brown, Aaron Steeghs, Cheryl Naveau, Sandra Witt (AMEC)

Wabun Tribal Council: Shawn Batise

Flying Post First Nation, Chief Murray Ray

Councilors: Bob McLeod, Richard Ray, Lynn Ray, Susan Baril

Community members – See sign in sheet.

Open House Purpose: IAMGOLD held an open house and provided a presentation to the community on the Côté Gold Project. The objectives of the open house were to provide an overview of:

- Project components
- Potential environmental effects
- How and when we will involve the community in the environmental assessment

During the open house IAMGOLD will hear and record thoughts on the Project and will consider the feedback for incorporation into a final Project Description report for submission to the Canadian Environmental Assessment Agency in March 2013.

Question: With all the drilling that has been done, do they have a good idea of what is there?

Response (IAMGOLD): Yes they do. We still have to do prefeasibility and feasibility studies but it looks good. It has been determined that the mine will be profitable so far.

Question: Have lakes been moved before?

Response (IAMGOLD): Yes. Three Nations Lake at Timmins and a lake in Kapuskasing called Lake Pinawa.

We have employed these experts for the Côté Gold Project. We will produce another lake of the same size and environment with the same fish and other animal species at the new lake. There is science that proves this works. There will be monitoring to ensure the lake and fish are viable.

Question: How many square miles is the site?

Response (IAMGOLD): 20 kilometres.

Question: What is the height of the tailings management?

Response (IAMGOLD): 40 metres.

Question: What about the garbage at the site?

Response (IAMGOLD): We don't know what will happen with the garbage at the site yet. Currently we are trucking it off site for disposal but we will be looking at permitting a potential landfill site.

Question: What other bands are you speaking to?

Response (IAMGOLD): We have primarily been speaking with the Flying Post First Nation and the Mattagami First Nation. We will be consulting with the Matachewan First Nation and Brunswick House. The government will direct us at some point on who to consult beyond these First Nations. We have an Exploration Agreement that will be amended to include Flying Post First Nation. We are working towards an Impact Benefit Agreement.

Question: Is there any way you can build the mine without moving the lake that is economic?

Response (IAMGOLD): No. The ore is close to the surface and for safety reasons we need to construct an open pit mine. We can't go underground.

Question: Could you be refused by the government?

Response (IAMGOLD): It depends on what the studies show. We must replace the lake. That is clear.

Question: Does the project go ahead if you can't get approval to replace the lake?

Response (IAMGOLD): No.

Question: What kind of fish are in the lake?

Response (IAMGOLD): Perch, whitefish, pike, suckers and pickerel.

Question: What is the farthest that you have drilled?

Response (IAMGOLD): 600 metres.

Question: Will there be more drilling beyond the current scope?

Response (IAMGOLD): No that's all that we plan on for the time being. This is what makes sense economically. We are focused on the one ore body to get started. There will probably be exploration drilling continuing onsite after this ore-body is defined exploring for other potential areas.

Question: With respect to water regulation, how often to you expect unintended releases? One time per week? One time per month?

Response (IAMGOLD): Never hopefully. We are going to build storage in case the water is not to acceptable standards. We realize that we must manage the water and we take this very seriously. We have policies on health, safety, and community that we adhere to and a zero harm policy.

Question: Are you looking at Training? There is a shortage of miners in the area.

Response (IAMGOLD): Yes. We are not sure what this looks like but it is part of our Impact Benefit Agreement discussions. We are trying to identify what are the priorities and interests of the communities. We recognize the challenge in finding workers.

We would like to survey the community to find out who would be interested in working at the mine and what they would be interested in doing. We would like an opportunity to talk to the youth.

Comment (Chief Ray): There are many opportunities at the mine beyond becoming a miner. There are great prospects for the youth. The youth can start training now for a wide range of careers from mine workers to geologists. They are good long-term jobs.

Question: Are there safety coordinators?

Response (IAMGOLD): Yes and community relations coordinators.

Question: Will there be a full time emergency response facility?

Response (IAMGOLD): No but there will be people on site with appropriate first aid training.

Meeting Notes Côté Gold Project

Mattagami First Nation Community Open House and Presentation Mattagami First Nation Community Centre

February 20, 2013

Attendees:

IAMGOLD Corporation: Aaron Steeghs, Steve Woolfenden, Dave Brown, Cheryl Naveau, Caroline Burgess (AMEC)

Wabun Tribal Council: Shawn Batise (SB)

Mattagami First Nation: Chief Walter Naveau
Councilors: Leonard Naveau, Jennifer Constant, Delores McKay
Community members: See sign-in sheet.

Open House Purpose: IAMGOLD held an open house and provided a presentation to the MFN community on the Côté Gold Project (attached). The objectives of the open house were to provide an overview of:

- Project components
- Potential environmental effects
- How and when we will involve the community in the environmental assessment

During the open house IAMGOLD will hear and record thoughts on the Project and will consider the feedback for incorporation into a final Project Description report for submission to the Canadian Environmental Assessment Agency in March 2013.

Questions and Responses:

Question (MFN member): IAMGOLD should work with MFN to discuss moving lakes, altering water bodies. Are there any examples of open pits that are lakes today?

Response (IAMGOLD): There are lakes that were created by flooding of mining open pits in the southern part of the province but not many examples in northern Ontario. We definitely want to work with the communities and discuss the impacts to water bodies.

Comment (MFN member): The government isn't really the boss, IAMGOLD needs to work with us.

Response (IAMGOLD): Our relationship won't be based on what the government says/needs. We want a relationship between IAMGOLD and MFN – we have done this in other countries

where governments do not have as much regulation. Working with indigenous peoples is the new reality for mining companies.

Question (MFN member): How much assurance is there for rehabilitation of the mine site? In the past (example given of tailings spill into the Montreal River near Matachewan), there was no assurance for cleaning up the land.

Response (IAMGOLD): In order to build / operate we have to file Closure Plans with the provincial government and we also have to file financial bonds with Ontario so that they would be able to take over and manage the site should the company not be able to do this.

Comment (MFN member): Our First Nation wants to be involved in reclamation planning.

Response (IAMGOLD): Yes, it is important that companies put up the money first so companies can't walk away from mine sites. Your support with Closure Planning is critical. We will have a look at other properties (pictures) that have been closed by IAMGOLD.

Question (MFN member): Does IAMGOLD have experience with open/closing mines?

Response (IAMGOLD): Yes, in Quebec as well as in other areas of the world. Not all would be mines that IMG operated but mines that were run by companies that IMG acquired and then closed.

Comment (MFN member): IAMGOLD gets assurance monies back if they complete Closure properly. The issue is that the cost for materials for reclamation and closure go up over time.

Response (IAMGOLD): This is why progressive rehabilitation is done – costs of materials change regularly. At this stage, no financial assurances are required for the Project. Mine closure plans will be submitted and financial assurance will be provided as the Project advances into development and operations.

Question (MFN member): Can IAMGOLD sell mine rock aggregates?

Response (IAMGOLD): Not sure, we will need to get back to you on this, but there could be an issue with using rock off-site; can use for onsite for construction purposes (tailings dams etc.) There is no intent to sell mine rock aggregates. IAMGOLD will discuss the possibility with the province of Ontario if a potential use is identified.

Question (MFN member): What happens if you find more acid generating rock?

Response (IAMGOLD): We still can manage this rock by putting under water (not in a lake, but in the Tailings Management Area).

Question (MFN member): Where are the stockpiles?

Response (IAMGOLD): There are small stockpiles near the processing facilities (shown on map).

Question (MFN member): Would tailings be put into swamps that would then be drained into rivers and lakes?

Response (IAMGOLD): Cyanide is destroyed so doesn't have a chance to leave mill – tailings are just finely crushed rock mixed with water. Tailings management now is very different than it was historically. Also the rock type we have at the Côté site doesn't have much cyanide which is

positive for us as it isn't as expensive to manage. We will also re-use cyanide (it is very expensive) so only small amounts will be destroyed in the first place.

Question (MFN member): Do you use mercury in the mining process?

Response (IAMGOLD): No

Question (MFN member): Are you using carbon in pulp milling system?

Response (IAMGOLD): The intent is to use carbon in pulp (C.I.P.) instead of carbon in leach (C.I.L.)

Question (MFN member): What is the size of the Tailings Management Area?

Response (IAMGOLD): At the end of the mine life it will be 900 hectares.

Question (MFN member): Will the Tailings Management Area be lined or just clay? I think it needs to be lined. We don't want water flowing towards us that is toxic.

Response (IAMGOLD): We haven't made this decision yet. We will be recycling as much water as possible and not releasing it so we have to be constantly drawing water from natural water bodies.

Question (MFN member): What explosive types are being used? Where will mine water be sent?

Response (IAMGOLD): We would be using variable portions of emulsion, or emulsion-blend explosives, and ANFO (ammonium - nitrate / fuel oil). We are working on water management systems. Regulations and standards are very strict about the quality of water that is being released back to the environment.

Question (MFN member): Would you eat fish from the open pit after it becomes a lake?

Response (IAMGOLD): It is our job to make sure that the fish will be edible. We do this for all of our operations; we monitor this because this is a concern for many people in the places where we operate mines.

Comment (MFN member): Underground there are natural faults and you will need to clean that water from the underground.

Response (IAMGOLD): Yes, there are very tight standards – we can't even hose down a truck without capturing and managing that water that runs off of it.

Question (MFN member): During the preparation of the EA, will there be any projects happening at the site?

Response (IAMGOLD): Yes and no. We can't start building until we get approvals but work similar to that done previously (exploration drilling, bulk sampling, small infrastructure work to support this activity) will continue over the next 2 years. Closure and rehabilitation of Chester I will also be happening. We are committed to getting information out on employment opportunities – there is a fact sheet that is being prepared.

Question (MFN member): Does the IBA have to be implemented prior to the EA or opening of the mine?

Response (IAMGOLD): We hope to have an IBA completed before the draft EA is submitted next December.

Question (MFN member): What do you do in Africa that is like an IBA?

Response (IAMGOLD): We do a lot of training – training will also be a big part of the IBA for MFN. It will not just be about quotas and having people in entry level positions – but training so a person can get good, meaningful jobs. We also have an in-house leadership training program.

Question (MFN member): Why open pit mining rather than underground mining?

Response (IAMGOLD): For health and safety reasons – the ore body is shallow and can't be mined safely using an underground process. Also the ore is low grade – (that is, there is a small amount of gold in every tonne of rock) so this is best to be mined using an open pit.

Question (MFN member): What type of fish are in Cote Lake?

Response (IAMGOLD): Predominant sport fish is: Northern Pike and other forage fish (e.g., minnows, suckers).