

**Record of Consultation for the Côté Gold Project
Provincial Individual EA
Appendix J**



Prepared for:
IAMGOLD Corporation

Prepared by:
AMEC Environment & Infrastructure

Project Number:
TC121522



APPENDIX J

SUMMARY REPORT: NOVEMBER 8, 2012 GOGAMA OPEN HOUSE

**CÔTÉ GOLD PROJECT
NOVEMBER 2012 OPEN HOUSE SUMMARY**

**Submitted to:
IAMGOLD Corporation
401 Bay Street, Suite 3200
Toronto, Ontario
M5H 2Y4**

**Submitted by:
AMEC Environment and Infrastructure
a Division of AMEC Americas Limited
160 Traders Blvd., Suite 110
Mississauga, Ontario
L4Z 3K7**

March 2013

TZ12023

TABLE OF CONTENTS

	PAGE
1.0 INTRODUCTION.....	1
2.0 CONSULTATION PROCESS.....	1
2.1 Notification of the Open Houses	1
2.2 Description of the Open Houses	1
2.3 Summary of Questions and Comments	2
3.0 CONCLUSION	2

LIST OF APPENDICES

- Appendix A: Poster Boards
- Appendix B: Completed Comment Forms

1.0 INTRODUCTION

This November 2012 Open House Summary Report (Report) is part of the commitment of the IAMGOLD Corporation (IAMGOLD) to inform and consult with local communities and stakeholders regarding the proposed Côte Gold Project (CGP). The Open House was organized by IAMGOLD to introduce IAMGOLD and members of the team, and share information about the Project. This Report presents a summary of the consultation activities and feedback associated with these sessions.

2.0 CONSULTATION PROCESS

2.1 Notification of the Open Houses

Notifications of the Open Houses were provided one week in advance to all households in the communities of Gogama, West Tree and Shining Tree as well as the Mattagami First Nation Reserve through the Gogama Local Services Board.

2.2 Description of the Open Houses

The open house was held at the Gogama Community Centre on November 8, 2012 from 7:00 p.m. to 9:00 p.m. The open house was attended by 73 local community members primarily from Gogama but also from Mattagami First Nation.

Attendees were encouraged to sign a register at the door and indicate whether they would want to be placed on a project mailing list. Participants then were encouraged to view information about IAMGOLD, the Côte Gold Project, environmental baseline activities and consultation information. This information was presented in a series of 18 poster boards. A copy of the information presented is in Appendix A.

After a majority of attendees arrived, the Secretary of the Gogama Local Services Board, Mr. Gerry Talbot introduced IAMGOLD's Manager of Corporate Social Responsibility, Aaron Steeghs, who invited attendees to view the poster boards of Project information and indicated that although the Project is in very early stages of definition, that attendees could discuss the Project with IAMGOLD/AMEC representatives present. Other members of the Project team introduced themselves to the attendees.

Members of the Project team in attendance included:

- Cheryl Naveau, IAMGOLD, First Nation Liaison and Public Relations
- Aaron Steeghs, IAMGOLD, Manager of Corporate Social Responsibility
- Bruce Peters, IAMGOLD, Superintendent of Infrastructure and Logistics
- Rob Hobbs, IAMGOLD, Environmental Assistant
- Philippe Caron, IAMGOLD, District Health, Safety and Security Superintendent
- Francine Mathieu, IAMGOLD, Camp Manager
- Albert Nelmapius, IAMGOLD, Manager of Administration
- Jean Cormier, HR/OD Consultant
- Caroline Burgess, AMEC, Associate Consultant

Comment forms were made available for each attendee. Project representatives encouraged attendees to fill out and return the comment forms following the session. Comments and questions gathered from comment form submissions and records of conversations recorded by open house staff are presented in Section 2.3.

2.3 Summary of Questions and Comments

Attendees seemed encouraged by the possibility of a mine development in the region. There was a general sentiment that employment opportunities had been decreasing steadily with the loss of the CN rail station, forestry downturn, and decrease in local MNR staff. Many indicated that the mine development would provide additional clientele for local tourism/outfitter lodge operators and restaurant. A few people mentioned that IAMGOLD is the third mining company to indicate that the project would move forward and hoped they would finally develop the property. In response IAMGOLD representatives stated that the company is a mid-tier, global mining company who has made a significant commitment by purchasing this mining property and intends to develop the property into a mine if it is feasible and permits are obtained.

It was confirmed that mining activities would provide economic stimulus through employment as well as for contractors needed temporary accommodations and other services close to the IAMGOLD site.

3.0 CONCLUSION

Overall, there was a positive interest in the Project as a socio-economic benefit to the area. From the comments received, concerns were raised with respect to:

- Water well quality and quantity;
- Visual aesthetics;
- Transportation;
- Housing;
- Employment opportunities; and
- Potential to impact wildlife, specifically species-at-risk in that area.

On the comment forms participants were also asked to evaluate the information sessions. The majority of respondents gave positive feedback about the event through the forms or in person to the Project team.

APPENDIX A
POSTER BOARDS



IAMGOLD and the Cote Gold Project

November 2012



Welcome

TSX: IMG NYSE: IAG

Cautionary Statement

This presentation contains forward-looking statements. All statements, other than of historical fact, that address activities, events or developments that the Company believes, expects or anticipates will or may occur in the future (including, without limitation, statements regarding expected, estimated or planned gold and niobium production, cash costs, margin expansion, capital expenditures and exploration expenditures and statements regarding the estimation of mineral resources, exploration results, potential mineralization, potential mineral resources and mineral reserves) are forward-looking statements. Forward-looking statements are generally identifiable by use of the words "may", "will", "should", "continue", "expect", "anticipate", "estimate", "believe", "intend", "plan" or "project" or the negative of these words or other variations on these words or comparable terminology. Forward-looking statements are subject to a number of risks and uncertainties, many of which are beyond the Company's ability to control or predict, that may cause the actual results of the Company to differ materially from those discussed in the forward-looking statements. Factors that could cause actual results or events to differ materially from current expectations include, among other things, without limitation, failure to meet expected, estimated or planned gold and niobium production, cash costs, margin expansion, capital expenditures and exploration expenditures and failure to establish estimated mineral resources, the possibility that future exploration results will not be consistent with the Company's expectations, changes in world gold markets and other risks disclosed in IAMGOLD's most recent Form 40-F/Annual Information Form on file with the United States Securities and Exchange Commission and Canadian provincial securities regulatory authorities. Any forward-looking statement speaks only as of the date on which it is made and, except as may be required by applicable securities laws, the Company disclaims any intent or obligation to update any forward-looking statement.

The United States Securities and Exchange Commission (the "SEC") permits mining companies, in their filings with the SEC, to disclose only those mineral deposits that a company can economically and legally extract or produce. We use certain terms in this presentation, such as "mineral resources", that the SEC guidelines strictly prohibit us from including in our filings with the SEC. U.S. investors are urged to consider closely the disclosure in the IAMGOLD Annual Report on Form 40-F. A copy of the 2010 Form 40-F is available to shareholders, free of charge, upon written request addressed to the Investor Relations Department.

Total Resources includes all categories of resources unless indicated otherwise.

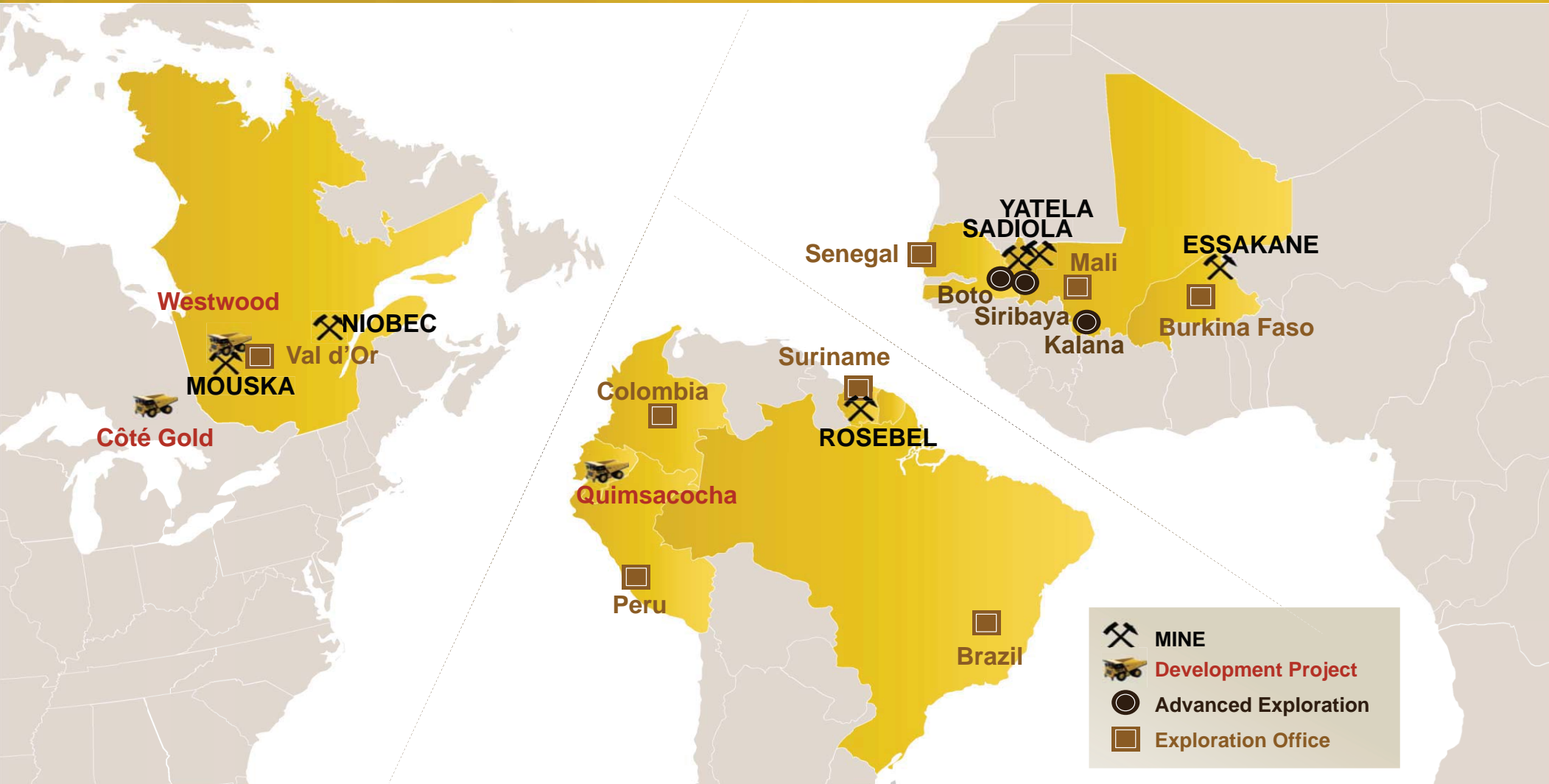
All currency numbers are in US\$ unless otherwise stated.



Who is IAMGOLD Corporation? Conduct Governed by Zero Harm Framework



IAMGOLD's Global Mining Operations



IAMGOLD's Social Partnerships

IAMGOLD's approach to community investment is to develop partnerships with local, regional and national stakeholders, recognizing the need for local insight, sustainability, transparency and quality.

Across Quebec, Ontario, Burkina Faso, and Suriname, IAMGOLD maintained 50 partnerships with government and civil society organizations. Canadian partners include: Relay for Life, Canadian Cancer Society, CIDA, Plan Canada, Right to Play, and United Way.



Economic Contributions where we operate

Economic contribution

IAMGOLD's most significant economic contributions are delivered as taxes, royalties, in-country purchasing and employee compensation (payroll including income taxes). Globally these contributions totaled \$939 million.

IAMGOLD revenues and operating costs

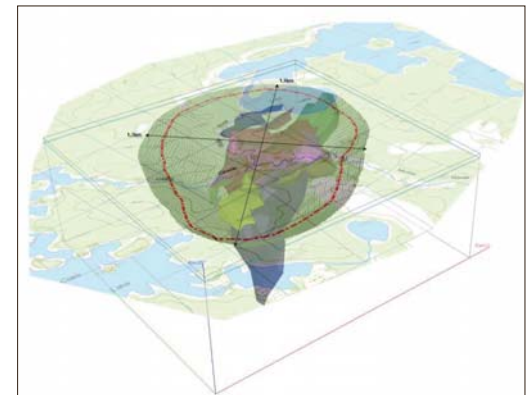
	Canada	Suriname	Burkina Faso	Mali
Revenue	\$ 230,046,000	\$ 608,165,000	\$ 590,087,000	\$ 235,195,000
Operating costs	\$ 180,922,000	\$ 308,245,000	\$ 277,027,000	\$ 154,758,000
Retained earnings	\$ 220,039,000	\$ 236,965,000	\$ 279,262,000	\$ 110,132,000
Payments to capital providers	—	\$ 7,282,000	—	—

	Canada	Suriname	Burkina Faso	Mali
Employee compensation (national payroll including taxes)	\$ 86,835,395	\$ 44,260,064	\$ 26,003,595	\$ 10,368,270
Income taxes	\$ 17,298,100	\$ 111,120,000	\$ 50,660,000	\$ 37,462,000
Royalties	\$ 904,000	\$ 35,715,000	\$ 30,243,000	\$ 14,101,000
National/local purchasing	\$ 160,083,331	\$ 143,387,597	\$ 128,803,282	\$ 67,857,902
Total national contribution	\$ 265,120,826	\$ 334,482,661	\$ 209,706,282	\$ 129,789,172



Côte Gold Project: Overview

- Previously owned by Trelawney; purchased by IAMGOLD in June 2012.
- Located in Chester Township, 25 km southwest of Gogama, 130 km south of Timmins and 170 km north of Sudbury.
- Prospecting/exploration in this area since 1900.
- Mine site would include the open pit, mill, mine rock piles, tailings storage facility, camp and office buildings.
- Currently preparing a Pre-feasibility Study. It is estimated that the open pit gold mine could:
 - › Operate for 15 years
 - › Produce 400,000 - 500,000 ounces annually
 - › Process 50,000 - 55,000 tons per day



Côte Gold Project: Well Established Infrastructure



ENERGY

- › 5 km to 115 kV power line
- › 75 km to 500 kV transmission line



ROAD

- › Close to Hwy 144, 130 km to Timmins, 170 km to Sudbury



RAIL

- › 25 km to CN Rail siding in Gogama
- › 70 km to CP Rail crossing



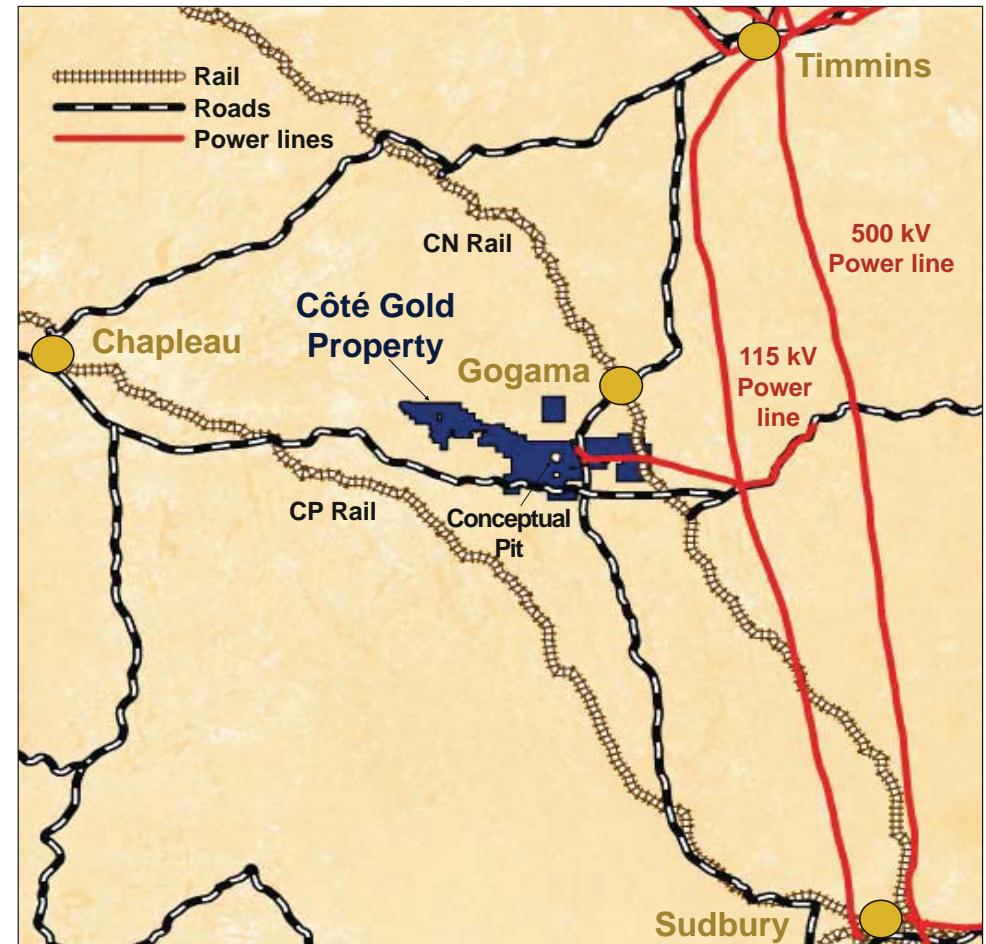
VENDORS & SUPPLIERS

- › Located in the heart of one of Canada's premier mining camps



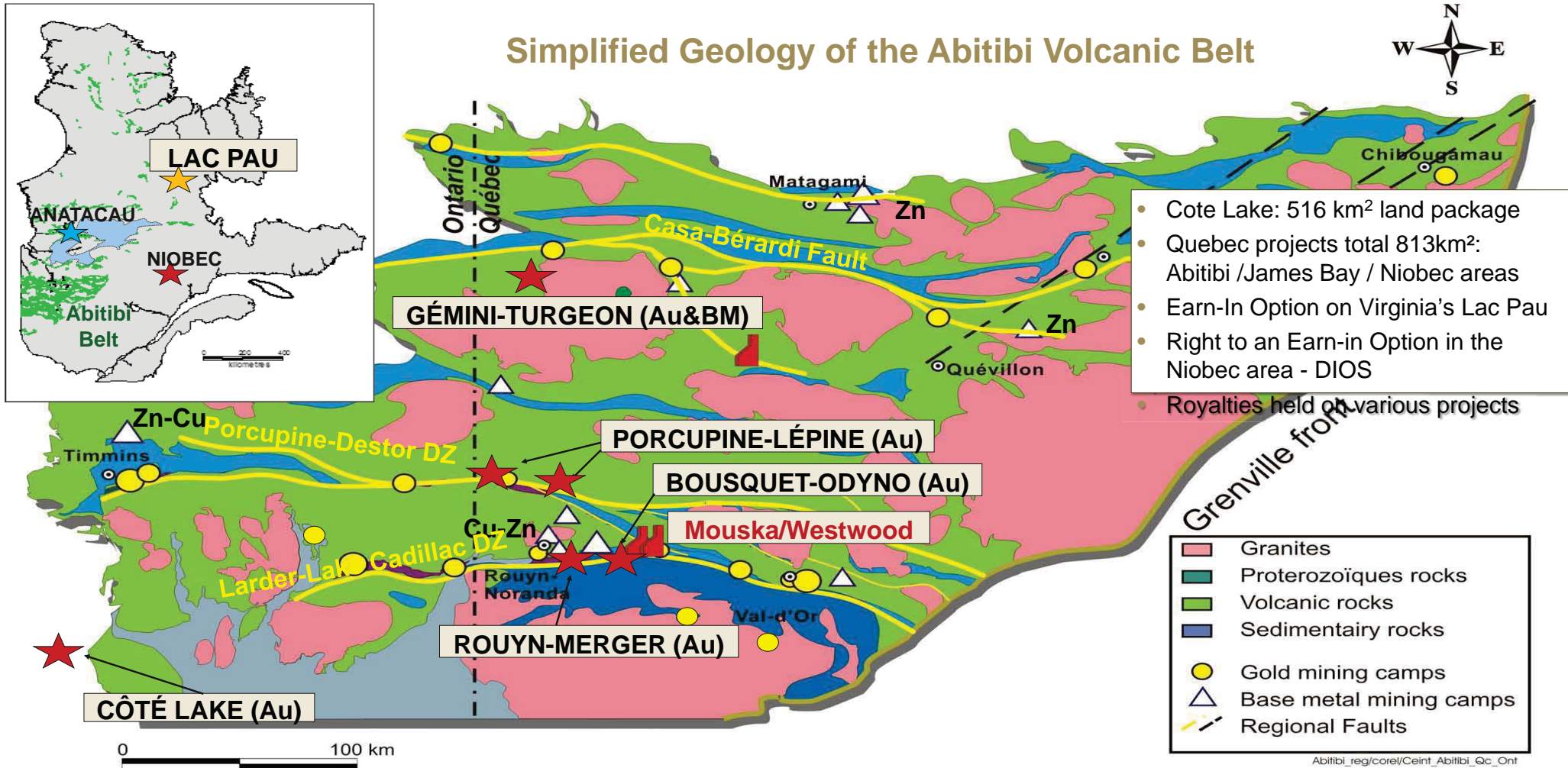
WATER

- › Ample supply to develop and operate a mine

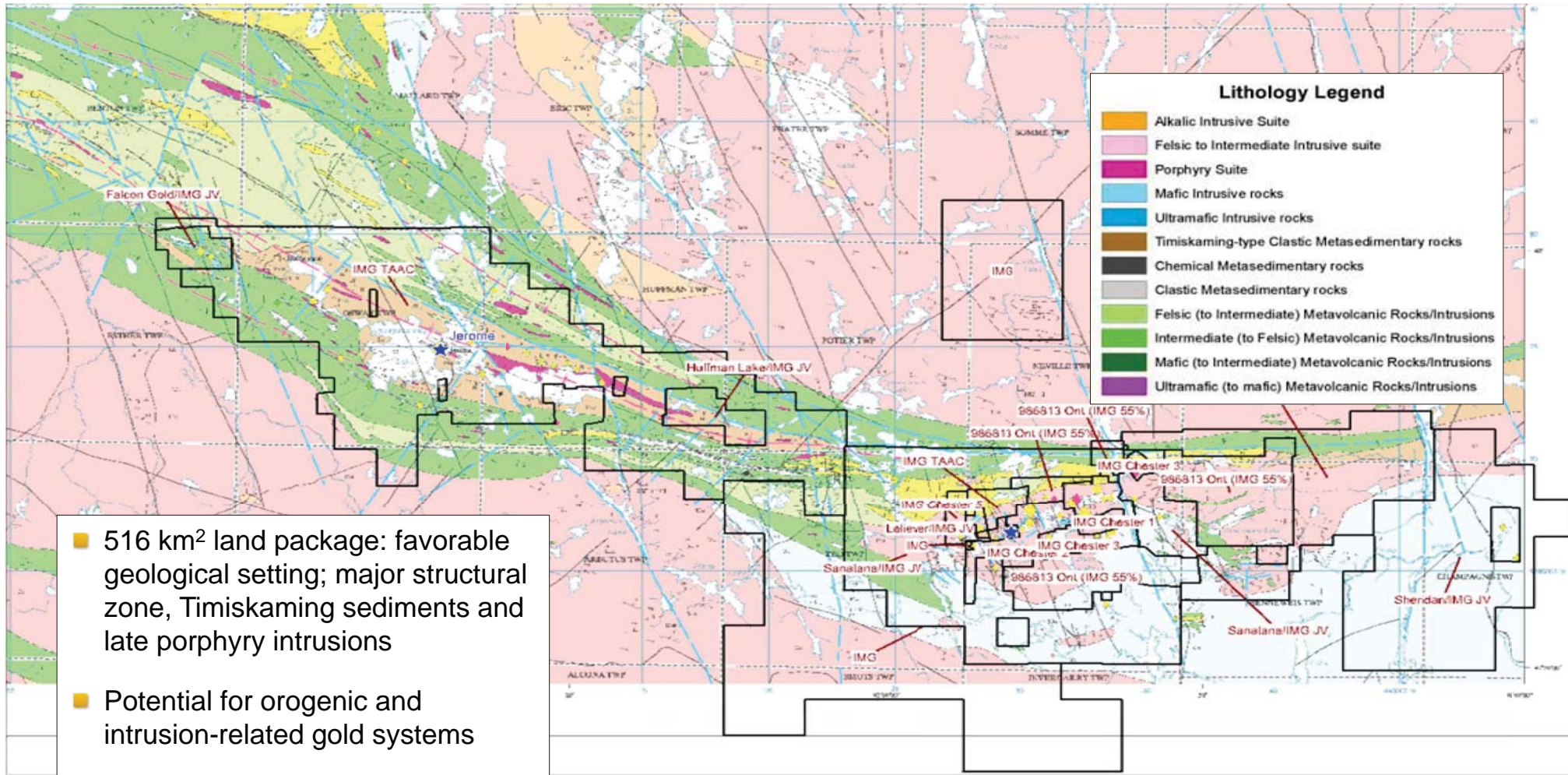


Source: MNMD and Trelawney Mining

Canada Exploration Projects



Côte Lake Exploration Potential



Côté Gold – Indicated Resource Increases 274% with Updated Mineral Resource Estimate

- October 4th resource estimate reports 274% increase in indicated resource.
- Percentage of resource in indicated category increases to 44% from 14% in previous estimate.
- Attributed to aggressive in-fill and step-out drilling since previous estimate.
- Updated resource estimate based on a total of 208 holes (110,722 metres).
- Mineralization defined over a strike length of 1,300 m, widths between 100 m–300 m and to a depth of 900 m.
- Deposit open along strike and at depth.
- Drilling continues with intent of converting more inferred resources to indicated for year-end R&R statement.

Mineral Resource Estimate Effective October 4, 2012

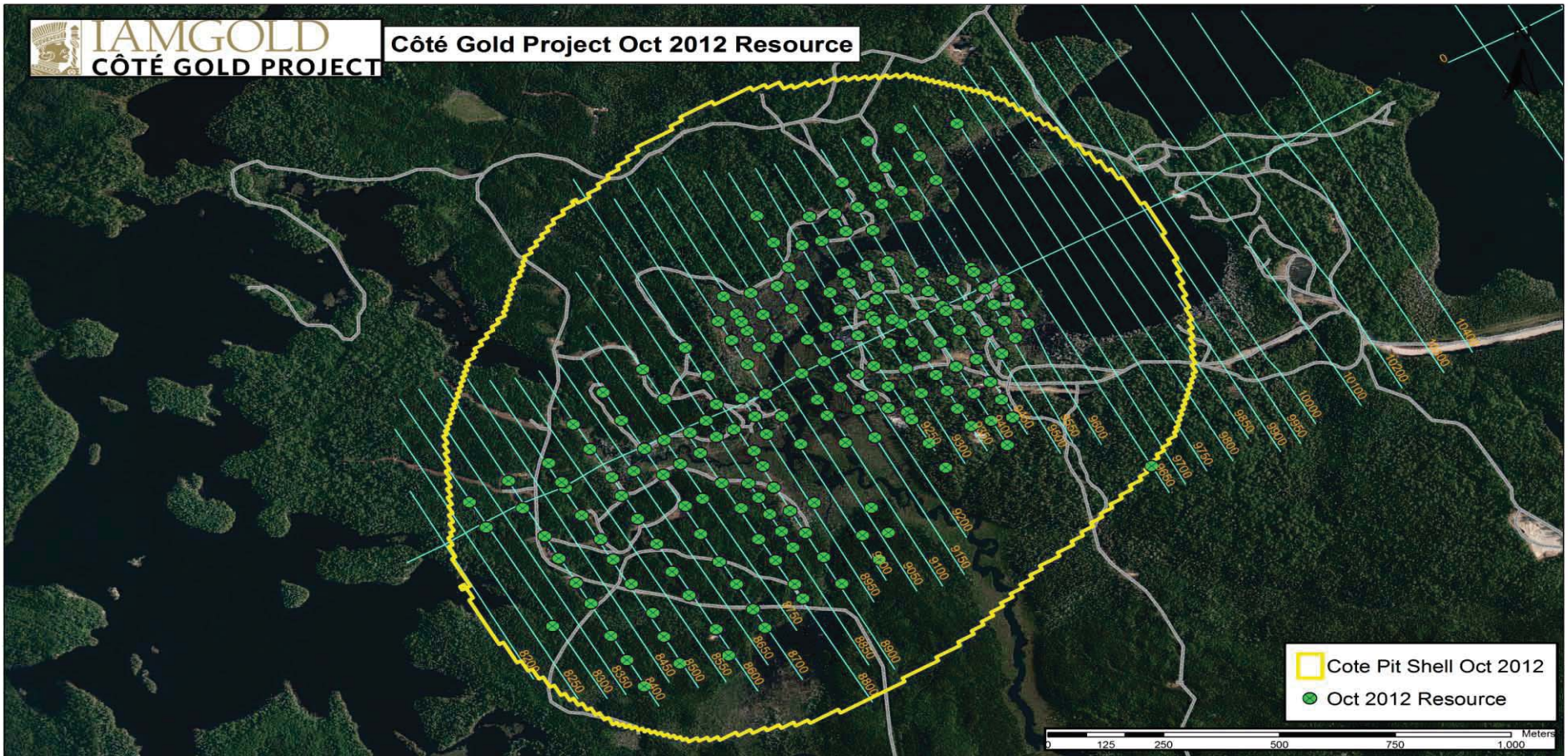
	Tonnes (millions)	Grade (g/t)	Contained Ounces (million ozs)
Indicated			
0.25g/t Au cut-off	136	0.82	3.61
0.30g/t Au cut-off	131	0.84	3.56
0.40g/t Au cut-off	116	0.91	3.39
0.50g/t Au cut-off	97	1.00	3.12
Inferred			
0.25g/t Au cut-off	172	0.85	4.73
0.30g/t Au cut-off	165	0.88	4.66
0.40g/t Au cut-off	144	0.96	4.43
0.50g/t Au cut-off	122	1.05	4.12

Source: Updated Resource Estimate for Côté Gold, effective October 4, 2012. NI 43-101 Technical Report to be filed on SEDAR on or before October 24, 2012.

Note: CIM Definition Standards were followed for Mineral Resources. Mineral resource stated on a 100% basis at the 0.3g/t Au cut-off grade assuming a gold price of \$1600 and process recovery of 93.5%. Mineral Resources are constrained within a conceptual pit generated using reasonable assumptions for economic and technical parameters. High assays are capped at 20 g/t Au. Bulk density ranges from 2.71 t/m³ to 2.79 t/m³ depending on rock type. Mineral Resources are not Mineral Reserves and do not yet have demonstrated economic viability. Numbers may not add due to rounding. The estimate includes all validated drill results as at August 1, 2012.



Côte Gold Project - Drilling Included in 2012 RPA Resource Estimate



Côté Gold Project: Local Partnerships and Employment

- Exploration Agreement with local First Nations.
- Employs 50 people at the Cote Gold Project site; half of whom live in Gogama and surrounding communities.
- Local contracts in place for services such as: hauling, clearing brush, making roads, pipe fusing, making core boxes, and carpenters.



Côté Gold Project: Current Activities on Site

■ Drilling

- › Continuing to define the resource
- › Drill program is winding down from a peak of 13 drills and projected to continue into the winter with a limited number of drills

■ Environmental Baseline Work

- › Aquatics /Terrestrial Baseline Studies
- › Water Diversion and Compensation
- › Geo Chemistry Waste Rock and Tailings
- › Surface and Ground Water Monitoring
- › Hydrology Monitoring Program
- › Archaeological (Phase 2 and 3 field studies completed for this year but will expand next year as the project evolves.)
- › Socio-economics
- › Aboriginal traditional knowledge and land use



Côté Gold Project: Future Activities

■ Starting Environmental Assessments

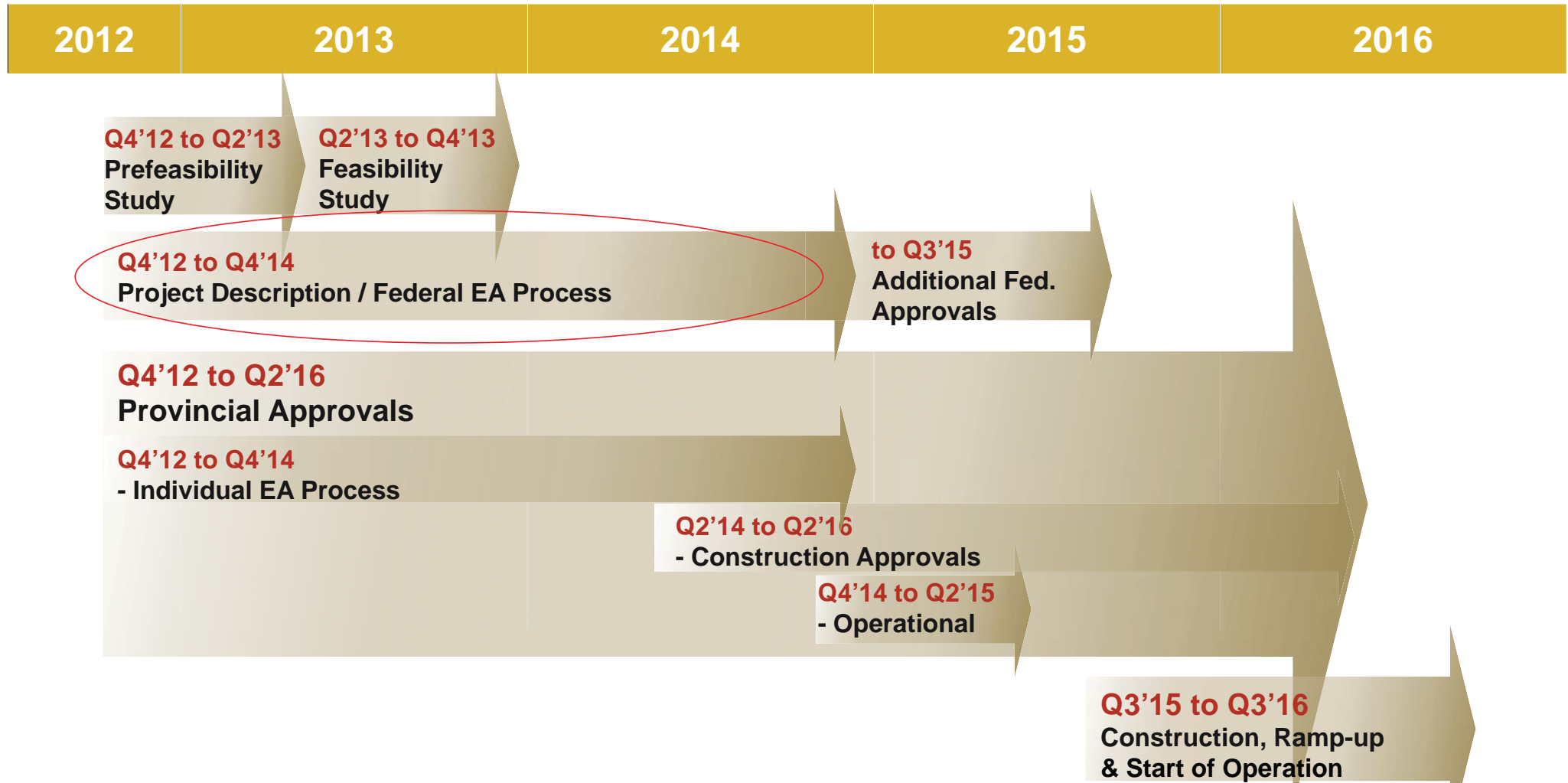
- › Preparing a Project Description for federal government agencies
- › May require federal environmental assessment under CEAA 2012
- › May require provincial environmental assessment for a 230 kV power line
- › Many things still in consideration including:
 - › Location of facilities
 - › Size of pit (boundaries)
 - › Location of tailings storage facility
 - › Water management options
 - › Size of workforce
 - › Power requirements/options

■ Continued Exploration Drilling over the winter 2012/2013

■ Early consultation with regional communities, Aboriginal people and stakeholders



Côté Gold Project: Preliminary Planning and Approvals Schedule



Côté Gold Project: Consultation

Stakeholders and Governments

First Nation and Métis groups (as identified by Federal and Provincial governments)

Gogama and other regional communities (Sudbury, Timmins)

Provincial and federal governments

Neighbours and adjacent land owners (Mesomikenda cottagers, mining interests, trappers, hunters)

Interested stakeholders (Economic development agencies, businesses, forestry companies, North Watch)

Consultation Activities and Information Sources

Meetings and open houses

Site tours

Newsletters/Newspaper notices

Project website (www.iamgold.com)

Direct mail/e-mail to project mailing list



Côte Gold Project: Community and Environment Team

Steve Letwin

President & Chief Executive Officer

Cheryl Naveau

First Nation Liaison and Public Relations

Bob Carreau

Senior Vice President Health, Safety and Sustainability

Dave Brown

Manager, Environmental Services

Aaron Steeghs

Manager, Corporate Social Responsibility

Bruce Peters

Manager, Infrastructure and Logistics



Côté Gold Project: Participate!

- **Your concerns about the Côté Gold Project are important to us.**
- **How do you want to be involved?**
- **Are there others who should be involved?**
- **Learn More: www.iamgold.com**
- **Contact Us . . .**
 - › **Cheryl Naveau, First Nation Liaison and Public Relations**
Tel: 705-269-0010 ext 205
E-mail: Cheryl_Naveau@iamgold.com
 - › **Aaron Steeghs, Manager, Corporate Social Responsibility**
Tel: 416-933-4961
E-mail: Aaron_Steeghs@iamgold.com



APPENDIX B
COMPLETED COMMENT FORMS

4. How would you rate the following about this Open House (circle number)?

	Poor	←————→			Excellent	Comments
Location of the Open House	1	2	3	4	5	
Time of day it was held	1	2	3	4	5	
Length of the session	1	2	3	4	5	
Information provided	1	2	3	4	5	
Your opportunity to comment/be heard	1	2	3	4	5	
Your opportunity to have your questions answered	1	2	3	4	5	

Suggestions for improvement:

5. Do you want to be added to our mailing list for future information about the Côté Gold Project?

Name: Anna Krolakowski

Organization or Affiliation (if applicable): [REDACTED]

Street Address: 44 RUSSEL ST

Municipality: GOGAMA ONT.

Postal Code: P0M 1W0

Phone: 705-894-9317

Email: [REDACTED]

Thank you for your input!

Information will be collected and used in accordance with the Environmental Protection Act, and solely for the purpose of assisting IAMGOLD in meeting environmental assessment and permitting requirements. This material will be maintained on file for use during the study and may be included in project documentation. All comments will become part of the public record. Personal information is protected under authority of the Freedom of Information and Protection of Privacy Act, Section 32, and is used solely for the purpose of completing environmental assessments for the Côté Gold Project. Individuals will not be identified in any public documents or used for any purpose other than this project.

Completed forms can be left with a member of our IAMGOLD team or faxed/mailed to:

Cheryl Naveau, First Nations Liaison and Public Relations
 3 Mesomikenda Lake Road, PO Box 100
 Gogama, Ontario P0M 1W0

Tel: 705-269-0010 ext 205
 Fax : 705-269-1181
 Cheryl_Naveau@iamgold.com

COMMENT FORM

Côté Gold Project – Gogama Community Open House November 8, 2012

Your comments on the proposed Côté Gold Project are important to us and will be used in the planning (including environmental assessments) and development of this Project.

1. Do you have any comments, concerns interests or suggestions related to the Côté Gold Project?

SEMINAR WITH INTERESTED BUSINESSES TO IDENTIFY OPPORTUNITIES.

2. Do you have any questions about the Côté Gold Project that you need answered?

HOW CAN LOCAL BUSINESS GET INVOLVED IN STARTUP AND PROJECT OBJECTIVES?

3. What is the best way to involve you or your community/organization in the Côté Gold Project?

OPEN HOUSE - EXCELLENT FIRST STEP

EMPLOYMENT OPPORTUNITIES - CAREER DAY

IAM GOLD SPONSORED APPRENTISHIP PROGRAMS FOR GOGAMA AND FIRST NATIONS

- START NOW TO MEET PROJECT NEEDS
- STRONGER LOCAL PRESENCE

SUPPORT INFRASTRUCTURE IMPROVEMENTS TO HELP COMMUNITY MEET IAMGOLD NEEDS.

4. How would you rate the following about this Open House (circle number)?

	Poor ←————→ Excellent					Comments
Location of the Open House	1	2	3	4	⑤	ALTERNATE AT FIRST NATION
Time of day it was held	1	2	3	4	⑤	I'M IN FROM OUT OF TOWN.
Length of the session	1	2	3	4	⑤	
Information provided	1	2	3	4	⑤	
Your opportunity to comment/be heard	1	2	3	4	⑤	
Your opportunity to have your questions answered	1	2	3	4	⑤	

Suggestions for improvement:

A FEW CITIZENS MAY NOT HAVE THE SKILLS TO UNDERSTAND FULLY THE INFORMATION CARDS. A BRIEF STATEMENT AS A WAY OF ENSURING EVERYONE LEAVES WITH A GENERAL KNOWLEDGE BASE.

5. Do you want to be added to our mailing list for future information about the Côté Gold Project? YES

Name: GORDON HOTCHKISS

Organization or Affiliation (if applicable): SIG DEVELOPMENTS

Street Address: 10 HAZEL ST BOX 250

Municipality: GOGANA

Postal Code: P0M 1W0

Phone: 705-600-9825

Email: gordon.hotchkiss

Thank you for your input!

Information will be collected and used in accordance with the Environmental Protection Act, and solely for the purpose of assisting IAMGOLD in meeting environmental assessment and permitting requirements. This material will be maintained on file for use during the study and may be included in project documentation. All comments will become part of the public record. Personal information is protected under authority of the Freedom of Information and Protection of Privacy Act, Section 32, and is used solely for the purpose of completing environmental assessments for the Côté Gold Project. Individuals will not be identified in any public documents or used for any purpose other than this project.

Completed forms can be left with a member of our IAMGOLD team or faxed/mailed to:

Cheryl Naveau, First Nations Liaison and Public Relations
 3 Mesomikenda Lake Road, PO Box 100
 Gogama, Ontario P0M 1W0

Tel: 705-269-0010 ext 205
 Fax : 705-269-1181
 Cheryl_Naveau@iamgold.com