

**Record of Consultation for the Côté Gold Project
Provincial Individual EA
Appendix E**



Prepared for:
IAMGOLD Corporation

Prepared by:
AMEC Environment & Infrastructure

Project Number:
TC121522



APPENDIX E

SUMMARY REPORT: MAY 2013 ABORIGINAL COMMUNITY OPEN HOUSES

CÔTÉ GOLD PROJECT
SUMMARY OF MAY 2013 ABORIGINAL OPEN HOUSES

IAMGOLD Corporation
401 Bay Street, Suite 3200
Toronto, Ontario
M5H 2Y4

May 2013

TABLE OF CONTENTS

	PAGE
1.0 INTRODUCTION.....	3
2.0 CONSULTATION PROCESS.....	3
2.1 Notification of the Open Houses.....	3
2.2 Description of the Open Houses	3
2.3 Summary of Comment Forms	4
2.4 Additional Avenues for Comments	6
3.0 CONCLUSION	7

LIST OF TABLES

Table 1: Open House Schedule	3
Table 2: Open House Attendance	3
Table 3: Comment Form Responses.....	4

LIST OF APPENDICES

Appendix A: Notices	
Appendix B: Poster Boards	
Appendix C: Comment Forms (Completed)	

1.0 INTRODUCTION

This Summary of the May 2013 Aboriginal Open Houses is part of the commitment of the IAMGOLD Corporation (IAMGOLD) to inform and consult with Aboriginal communities regarding the proposed Côté Gold Project. The Open Houses were organized by IAMGOLD to provide information about the Project and to review and seek feedback on the Draft Terms of Reference (ToR) under the Provincial Individual Environmental Assessment. This Report presents a summary of the consultation activities and feedback associated with these sessions.

2.0 CONSULTATION PROCESS

2.1 Notification of the Open Houses

Notifications of the Open Houses were provided in advance to the community of Flying Post First Nation by the Flying Post First Nation Band Office to their membership through mail and/or email. Notifications were provided to the Mattagami First Nation membership through mail and postings in the community (which include the community Facebook page, band office and general store). Copies of the notices are presented in Appendix A.

2.2 Description of the Open Houses

IAMGOLD organized a series of community Open Houses that are summarized in Table 2.

Table 1: Open House Schedule

Community	Date and Time
Flying Post First Nation Nipigon Community Centre Nipigon, Ontario	May 28, 2013 from 6 to 8 p.m.
Mattagami First Nation Mattagami First Nation Complex Mattagami Reserve No. 71	May 22, 2013 from 5 to 7 p.m.

At each of these sessions, IAMGOLD presented a series of poster boards (Appendix B). Participants then were encouraged to view information about IAMGOLD, the Côté Gold Project, the draft ToR, environmental baseline activities and consultation information.

Attendees were encouraged to sign a register at the door and indicate whether they would want to be placed on the Project mailing list. A summary of the attendance at each session is presented in Table 2.

Table 2: Open House Attendance

Community	Number of Attendees
Flying Post First Nation	22
Mattagami First Nation	20

Comment forms were made available for each attendee. Project representatives encouraged attendees to fill out and return the comment forms following the session. Comments and questions gathered from comment form submissions and records of conversations recorded by Open House staff are presented in Section 2.3.

2.3 Summary of Comment Forms

Completed Comment Forms are presented in Appendix C and a summary of the number of returned Comment Forms is presented in Table 3.

Table 3: Comment Form Responses

Community	Number of Comment Forms
Flying Post First Nation	1
Mattagami First Nation	3

1. Which Open House did you attend?

Flying Post First Nation (May 28, 2013): 1
 Mattagami First Nation (May 22, 2013): 3

2. What are your questions or comments related to the assessment of alternatives for the Côté Gold Project?

- No comments

3. What are your comments or concerns about the potential effects of the Côté Gold Project on the physical environment (e.g., air quality, noise, water quality) features?

Mattagami First Nation

- Water – concerned about the removal of lakes; Fish, Eagle Nests – disturb nesting time
- There will be a hole in the middle of our land.

4. What are your comments or concerns about the potential effects of the Côté Gold Project on the human environment (e.g., land use, communities, the economy) features?

Flying Post First Nation

- Main concern would be water quality being affected in local communities

Mattagami First Nation

- It would stop people from enjoying the land, such as fishing, camping, hunting, etc.
- Concerned about the effect of our highway (144) (pavement)

5. What are your comments or concerns about the potential effects of the Côté Gold Project on the biological environment (e.g., wildlife, fish) features?

Flying Post First Nation

- Main concern would be the disturbance of the lake and everything in it. When the lake & contents are re-located, how do we know if that lake will be able to thrive again?

Mattagami First Nation

- Displacement of wildlife
- Creates migration problems for birds, fish, moose, beaver, the whole area will be affected. Spawning beds will be ruined. Bird migrations will be altered.
- Traplines and the effects on harvesting our quotas.

6. Would you like to be provided with any other information about the Côté Gold Project?

Mattagami First Nation

- Yes, pertaining to my sister's trapline G035.

7. Do you have any information that might be relevant for the proposed Project/Project area?

- No comments

8. How would you like to be involved in the environmental assessment process?

Mattagami First Nation

- Involved as much as possible through the process
- Already involved by attending the Open Houses. Also, through employment.

9. Are there other people or stakeholders that you believe would be interested in the Côté Gold Project?

- No comments

10. How would you like to receive future information about the Côté Gold Project)?

	Flying Post First Nation	Mattagami First Nation
Open Houses		1
Website	1	
News Media	1	
Direct Mail		2
Email		1
In-person discussions with IAMGOLD representatives		1
Other:		1 – I am already on the mailing list

11. Do you want to be added to our mailing list for future information about the Project?

Flying Post FN (May 28, 2013): 3

Mattagami FN (May 22, 2013): 0

2.4 Additional Avenues for Comments

As part of the poster board displays, participants were encouraged to document any comments, concerns or questions on sticky notes and post them to blank boards in the areas of biological, physical and human environments as well as alternative assessment and consultation. The following summarizes feedback received through the sticky notes.

1. Physical Environment:

- No comments

2. Human Environment:

- No comments

3. Biological Environment:

- No comments

4. Alternatives Assessment:

Flying Post First Nation

- How do you plan on removing the fish from Côté Lake?
- Does Gogama get their water from this system? If so, are they upstream from discharge?

5. Consultation:

- No comments

3.0 CONCLUSION

Overall, there was a positive interest in the Project as a socio-economic benefit to the area. From the comments received, concerns were raised with respect to:

- Potential impacts to water quality; and
- Potential impacts to fish and wildlife.

APPENDIX A
NOTICES

Côté Gold Project

IAMGOLD Corporation has initiated a study under the Ontario *Environmental Assessment Act* for the development and operation of the Côté Gold Project. The Côté Gold Project is a proposed open pit gold mine with related processing facilities and infrastructure, to be developed approximately 20 kilometres southwest of Gogama, Ontario.

The Project is anticipated to be a significant contributor to the local economy and will provide employment opportunities. Consultation on the Côté Gold Project was initiated by IAMGOLD in 2012.



This Provincial environmental assessment process is one of two environmental assessment processes anticipated to be required for approval of the Côté Gold Project. A Federal environmental assessment is also expected to be needed pursuant to the *Canadian Environmental Assessment Act*. IAMGOLD is working with the Ministry and the Canadian Environmental Assessment Agency to develop a coordinated environmental process, including coordinated public consultation opportunities wherever possible in order to reduce duplication of effort.

Consultation:

Members of the public, agencies and other interested persons are encouraged to actively participate in the planning process by attending consultation opportunities or contacting IAMGOLD directly with comments or questions. Consultation opportunities will occur throughout the planning process, including this opportunity to provide comments on the draft Terms of Reference. All consultation events will be advertised in Gogama as well as Timmins and Sudbury, posted within local First Nation and Métis offices and published on www.iamgold.com.

Beginning **May 10, 2013**, the draft Terms of Reference will be available for download at: www.iamgold.com. You may inspect the draft Terms of Reference during normal business hours at the following locations:

Gogama

IAMGOLD Corporation
Côté Gold Project
3 Mesomikenda Lake Road
P.O. Box 100
Gogama, ON P0M 1W0
T: 705-269-0010

Gogama Public Library
3 Low Avenue
P.O. Box 238
Gogama, ON P0M 1W0
T: 705-894-2448

Timmins

Timmins Public Library
320 Second Avenue
Timmins, ON
T: 705-360-2623

Sudbury

Greater Sudbury Public Library
74 Mackenzie Street
Sudbury, ON P3C 4X8
T: 705-673-1155

Toronto

IAMGOLD Corporation
401 Bay Street, Suite 3200
P.O. Box 153
Toronto, ON M5H 2Y4
T: 416-360-4710

Ministry of the Environment
Environmental Approvals Branch
2 St. Clair Avenue West, Floor 12A
Toronto, ON M4V 1L5
T: 416-314-8001/1-800-461-6290

The Process:

The first step in the Provincial environmental assessment process is the preparation of a Terms of Reference. A draft Terms of Reference has been prepared and is being issued by IAMGOLD for public comment. It sets out the framework and work plan for addressing the *Environmental Assessment Act* requirements when preparing the environmental assessment, including such things as the alternatives that will be considered, how environmental effects will be evaluated, and the proposed public consultation activities.

A final proposed Terms of Reference will be submitted to the Ministry of the Environment (the Ministry) and will be issued for a formal comment period coordinated by the Ministry. This document will consider comments received on the draft Terms of Reference. If approved by the Minister, the proposed Terms of Reference will provide the framework and requirements for the preparation of the environmental assessment.

Additionally, the draft Terms of Reference will also be available at local Aboriginal community offices.

Your written comments about the draft Terms of Reference are requested by **June 9, 2013**. All comments and questions about the Project and draft Terms of Reference should be directed to:

Steven Woolfenden

Manager, Corporate Environmental Assessments and Approvals
IAMGOLD Corporation
401 Bay Street, Suite 3200, P.O. Box 153
Toronto, ON M5H 2Y4
T: 416-594-2884

E-mail: cotegold@iamgold.com

Under the *Freedom of Information and Protection of Privacy Act* and the *Environmental Assessment Act*, unless otherwise stated in the submission, any personal information such as name, address, telephone number and property location included in a submission will become part of the public record files for this matter and will be released, if requested, to any person.

You're Invited...

To come out to one of our community events to learn more about the Côté Gold Project and the Provincial Individual EA process.

IAMGOLD has volunteered to complete an Individual Environmental Assessment (EA) process for the Côté Gold Project, a proposed open pit gold mine, located 20 kilometres southwest of Gogama, Ontario.

IAMGOLD is hosting community open houses to share information and meet with interested residents and stakeholders about the Draft Terms of Reference. The Terms of Reference sets out the framework and work plan for completing the Individual EA process under the Ontario *Environmental Assessment Act*.

IAMGOLD is keen to hear your thoughts about the EA process and considerations which are important to you.

**PLEASE DROP BY OUR
COMMUNITY OPEN HOUSE:**

**Mattagami First Nation
Wednesday, May 22nd**

5:00 to 7:00 p.m.

Mattagami First Nation Complex
Mattagami FN Complex
(75 Helen Street)

To ask questions or provide comments about the Côté Gold Project please contact:

Cheryl Naveau

Aboriginal and Community Relations

Tel: 705-269-0010

Email: Cheryl_Naveau@iamgold.com

Aaron Steeghs

Manager, Corporate Social Responsibility

Tel: 416-933-4961

Email: Aaron_Steeghs@iamgold.com



IAMGOLD[®]
CORPORATION

**ADDITIONAL COMMUNITY
OPEN HOUSES:**

Tuesday, May 21st

4:00 to 7:00 p.m.

T.M. Davies Community Centre

(Walden Community Centre)

325 Anderson Drive, Sudbury

(Lively), ON

Wednesday, May 22nd

4:00 to 7:00 p.m.

Gogama Community Centre

Highway 661, Gogama, ON

Thursday, May 23rd

4:00 to 7:00 p.m.

McIntyre Community Centre

85 McIntyre Road, Timmins

(Schumacher), ON

You're Invited...

To come out to one of our community events to learn more about the Côté Gold Project and the Provincial Individual EA process.

IAMGOLD has volunteered to complete an Individual Environmental Assessment (EA) process for the Côté Gold Project, a proposed open pit gold mine, located 20 kilometres southwest of Gogama, Ontario.

IAMGOLD is hosting community open houses to share information and meet with interested residents and stakeholders about the Draft Terms of Reference. The Terms of Reference sets out the framework and work plan for completing the Individual EA process under the Ontario *Environmental Assessment Act*.

IAMGOLD is keen to hear your thoughts about the EA process and considerations which are important to you.

To ask questions or provide comments about the Côté Gold Project please contact:

Cheryl Naveau

Aboriginal and Community Relations

Tel: 705-269-0010

Email: Cheryl_Naveau@iamgold.com

Aaron Steeghs

Manager, Corporate Social Responsibility

Tel: 416-933-4961

Email: Aaron_Steeghs@iamgold.com

PLEASE DROP BY OUR COMMUNITY OPEN HOUSE:

Flying Post First Nation

Tuesday, May 28th

6:00 to 8:00 p.m.

Nipigon Community Centre (Arena)

Multi-Purpose Room (138 Wadsworth Drive)



IAMGOLD[®]
CORPORATION

ADDITIONAL COMMUNITY OPEN HOUSES:

Tuesday, May 21st

4:00 to 7:00 p.m.

T.M. Davies Community Centre

(Walden Community Centre)

325 Anderson Drive, Sudbury

(Lively), ON

Wednesday, May 22nd

4:00 to 7:00 p.m.

Gogama Community Centre

Highway 661, Gogama, ON

Thursday, May 23rd

4:00 to 7:00 p.m.

McIntyre Community Centre

85 McIntyre Road, Timmins

(Schumacher), ON

APPENDIX B
POSTER BOARDS

IAMGOLD's CÔTÉ GOLD PROJECT



Provincial Individual Environmental Assessment Draft Terms of Reference Overview

TSX: IMG NYSE: IAG

Purpose of this Meeting

- To present information about the draft Terms of Reference (ToR) for the Provincial Individual Environmental Assessment
- To give you the opportunity to share your thoughts, concerns, and interests on the draft ToR
 - › We are looking for your comments on the:
 - › Proposed Alternatives
 - › Environmental Components
 - › Consultation



Source: Minnow Environmental Inc.



Source: IAMGOLD – Core Samples



Source: AMEC - Meteorological and Air Quality Monitoring Stations

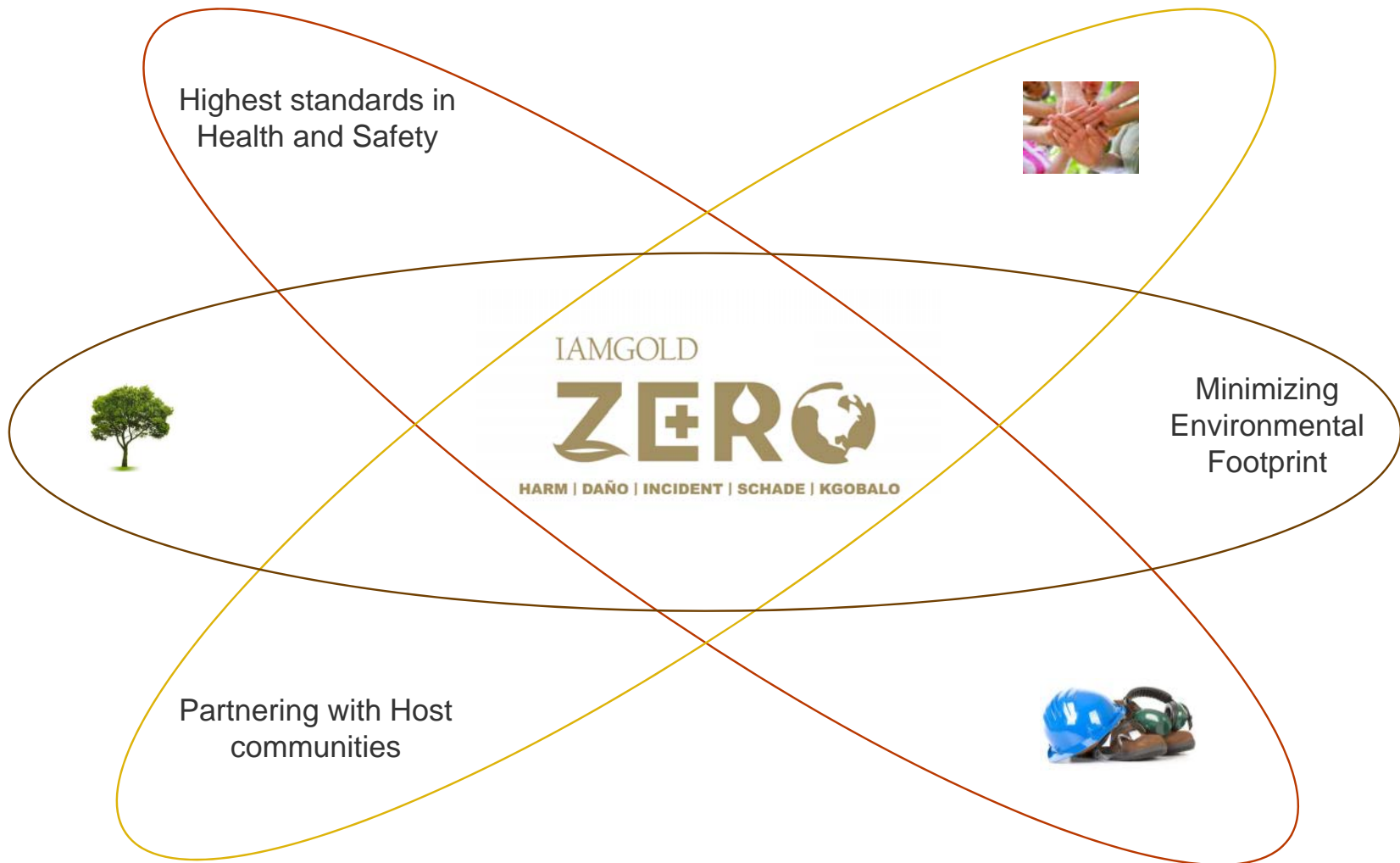
Areas of Study for the Environmental Assessment

Physical Environment

Biological Environment

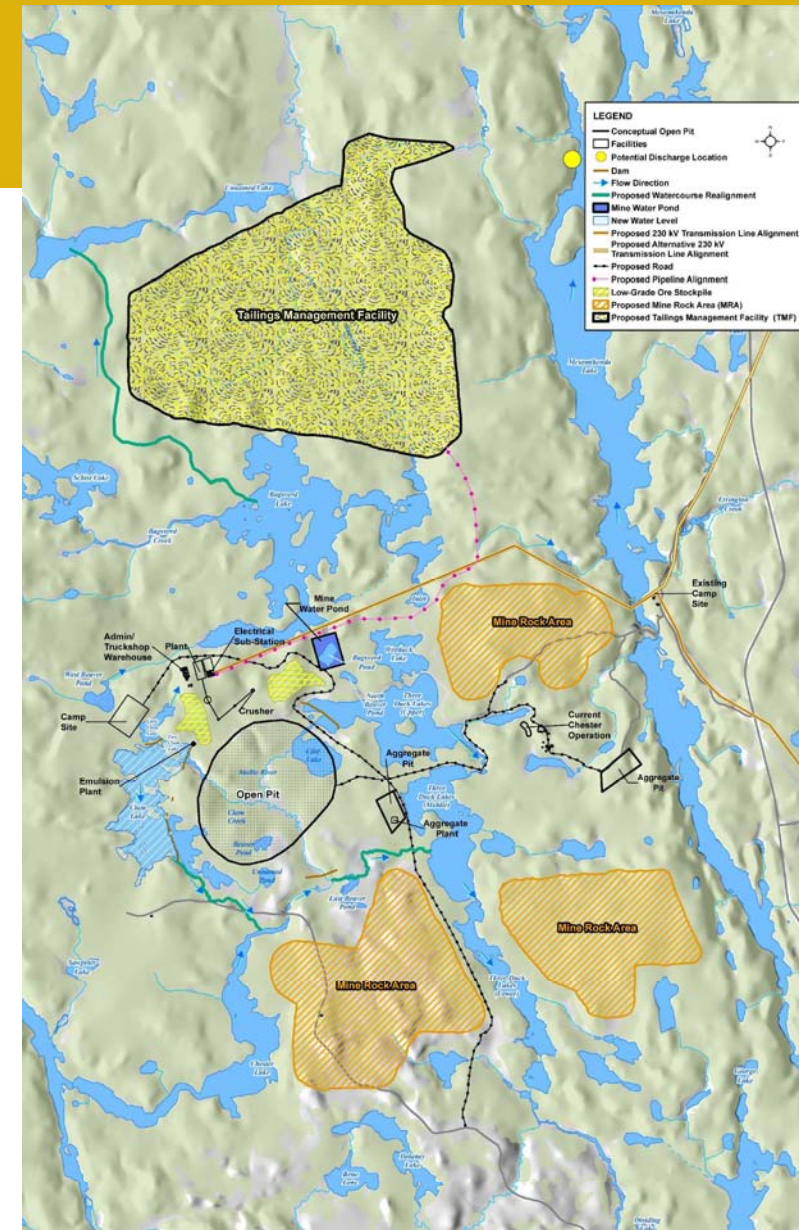
Human Environment

Who is IAMGOLD Corporation? Conduct Governed by Zero Harm Framework



Côté Gold Project

- Previously owned by Trelawney; purchased by IAMGOLD in June 2012
- Located in Chester Township:
 - › Approx. 20 kilometres (km) southwest of Gogama
 - › Approx. 130 km south of Timmins and 170 km north of Sudbury
- Prospecting/exploration in this area since 1900
- Project site would include the open pit, ore processing plant, mine rock areas, tailings management facility, camp and office buildings
- Currently preparing a Pre-Feasibility Study. It is estimated that the open pit gold mine could:
 - › Operate for 15 years
 - › Process 60,000 tonnes per day



Côté Gold Project: Preliminary Planning and Approvals Schedule

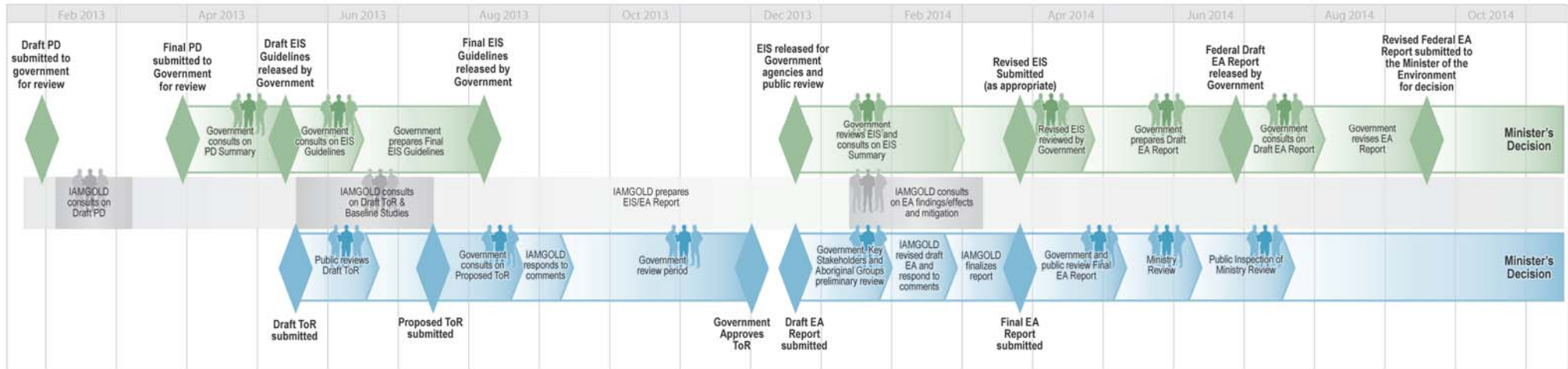


Côté Gold Project: Local Partnerships and Employment

- Exploration Agreement with local First Nations
- Currently employs 50 people at the Côté Gold Project site; half of whom live in Gogama and surrounding communities
- Local contracts in place for services such as: hauling, clearing brush, making roads, pipe fusing, making core boxes, and carpenters
- IAMGOLD anticipates to employ approx. 1,200 workers during the construction phase and approx. 500 workers during the operations phase of the Project



Côté Gold Project: Environmental Assessments Timeline



Côté Gold Project: Terms of Reference (ToR) Overview

- **The ToR tells the government, the public and Aboriginal communities how the provincial environmental assessment will be prepared**
- **The ToR describes:**
 - › the purpose and description of the Côté Gold Project
 - › the purpose and alternatives for undertaking the Project; and how they will be evaluated
 - › the potential impacts of the Project on the environment; and how their significance will be assessed
 - › the approach by which the Aboriginal communities, public, and stakeholders will be engaged and consulted in the preparation of the environmental assessment
- **The Minister of the Environment must approve the ToR prior to the proponent preparing the environmental assessment**



Côté Gold Project: Terms of Reference Alternatives Assessment

Water Supply

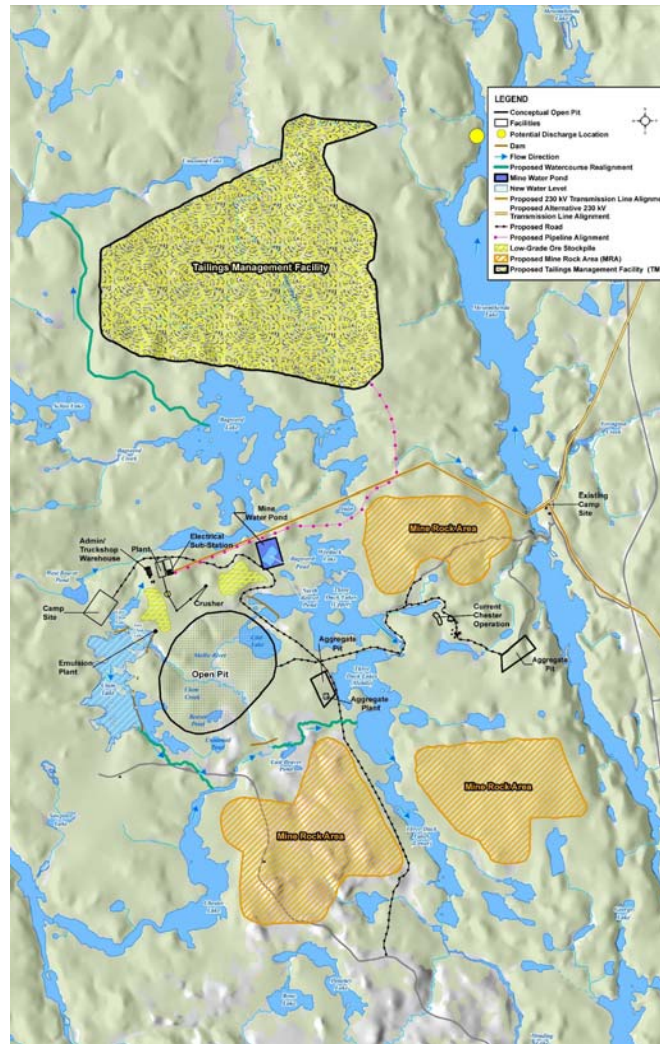
Alternatives	Assessed in the EA?	Rationale
Mesomikenda Lake	Yes	Method for meeting fresh water needs that cannot be met by on-site water recycling
Other area watercourse(s), lake(s) and pond(s)	Yes	
Groundwater well(s)	Yes	

Watercourse Realignments

Alternatives	Assessed in the EA?	Rationale
Realignment of Bagsverd Creek around the Tailings Management Facility	Yes	Watercourse realignments are dependent on the location of Project components and will be modified to minimize impacts to receiving waters and aquatic species
Realignment of portions of Three Duck Lakes, Chester Lake and the Mollie River system around the open pit and mine rock areas	Yes	

Aggregate Supply

Alternatives	Assessed in the EA?	Rationale
Overburden and mine rock	Yes	Needs being defined –
Dedicated on-site aggregate pits	Yes	Potential quantities and sources will be identified and assessed
Commercial off-site aggregate pits	Yes	



Site Infrastructure

Alternatives	Assessed in the EA?	Rationale
Maintenance garage, warehouse and administration complex	Yes	Various Locations Optimal location reviewed and refined as Project design continues
Accommodation complex	Yes	
Fuel and lube bay	Yes	
General laydown areas and temporary storage facilities	Yes	

Water Discharge Location

Alternatives	Assessed in the EA?	Rationale
Mesomikenda Lake	Yes	Discharge locations will be evaluated based on receiving water hydrological conditions, the water balance and the water quality model
Bagsverd Creek	Yes	



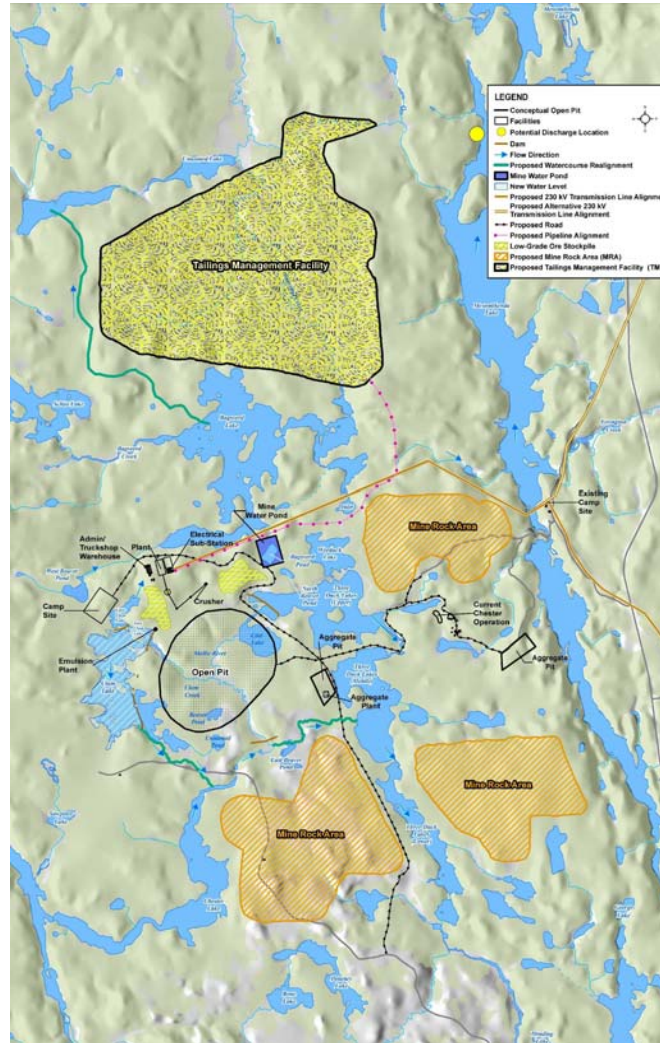
Côté Gold Project: Terms of Reference Alternatives Assessment

Process Effluent Treatment

Alternatives	Assessed in the EA?	Rationale
In-plant cyanide recycling and destruction using SO ₂ /Air process	Yes	Commonly used process where surface water and people would be severely impacted in the event of accidental tailings release
Process effluent discharge to Tailings Management Facility with natural degradation for cyanide destruction, with supplemental hydrogen peroxide	Yes	Hydrogen peroxide destruction of residual cyanide – lower cost than SO ₂ /Air process, but may carry environmental risks
Process effluent discharge to Tailings Management Facility with natural degradation for cyanide destruction	No	Presents a greater overall environmental risk

Mine Water Management

Alternatives	Assessed in the EA?	Rationale
Integrate with Tailings Management Facility operations	Yes	Best suited for Project objective: on-site water recycling
Separate mine water system	No	Against Project objective of recycling on-site water



Mine Rock and Overburden Management

Alternatives	Assessed in the EA?	Rationale
Stockpile(s) adjacent/proximal to the open pit	Yes	Common to place mine rock and overburden as close to the pit as practical Minimizing mine rock management cost
Temporary stockpile(s) location, retaining mine rock and overburden in pit during operations and/or returning to pit at closure	No	Excessive transportation costs that would render the Project not economically viable

Gold Recovery

Alternatives	Assessed in the EA?	Rationale
Combination of non-cyanide and cyanide recovery methods – selected alternative	Yes	Partial recovery through gravity separation Finer gold fraction would require cyanide leaching
Non-cyanide recovery methods	No	No viable industrial scale application alternative available
Cyanide recovery methods	No	Applied when gold is extremely fine and gravity separation is ineffective



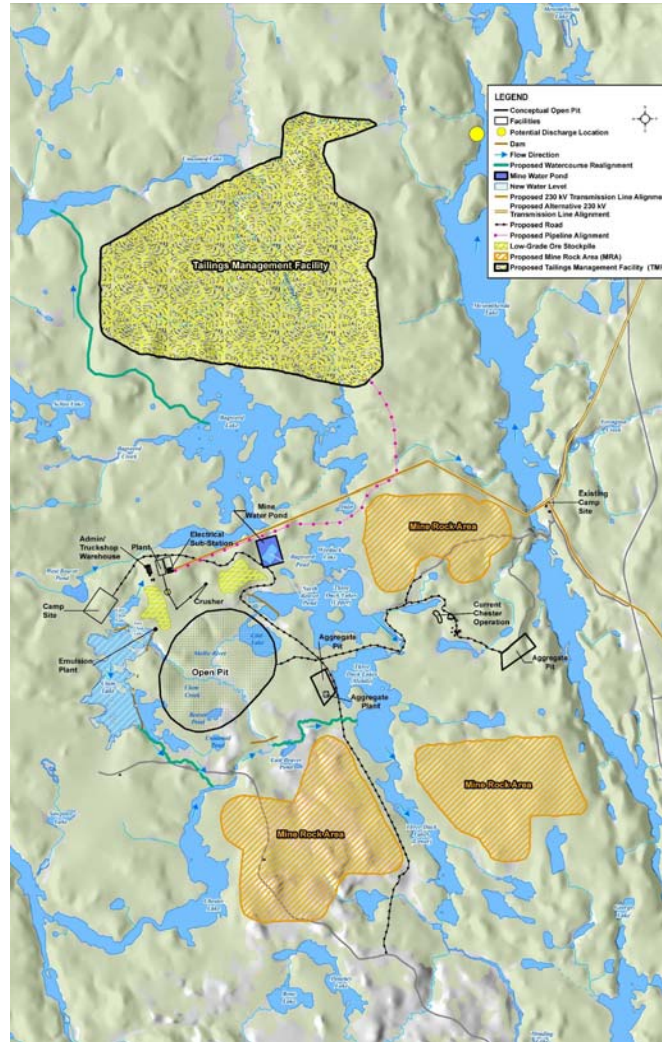
Côté Gold Project: Terms of Reference Alternatives Assessment

Tailings Management

Alternative	Assessed in the EA?	Rationale
Tailings slurry and thickening	Yes	Most commonly used deposition method in cooler climates – most suitable for the Project
Thickened tailings (60% solid content)	No	Thickening is costly Only carried out where water availability is limited (dry climates)
Paste thickened tailings (68% solid content)	No	Thickening is costly Only carried out where water availability is limited (dry climates)

Tailings Management Facility

Alternative	Assessed in the EA?	Rationale
Tailings Management Facility located north of the open pit, overprinting a portion of Bagsverd Creek	Yes	Result of alternatives assessment narrowed the Tailings Management Facility location to the area north of the open pit



Mining

Alternative	Assessed in the EA?	Rationale
Open pit mining – selected alternative	Yes	Ore body is high tonnage and relatively low grade Gold finely disseminated in ore body Deposit near surface
Underground mining	No	Ore body not suitable for underground mining
Combined open pit and underground mining	No	Ore body not suitable for this method Underground operation not anticipated to be economically viable



Source: IAMGOLD - Côté Gold Project Area

Terms of Reference - Alternatives Assessment

YOUR COMMENTS, CONCERNS or QUESTIONS...

Use a sticky note to post your comments here . . .



Physical Environment



Source: AMEC - Meteorological and Air Quality Monitoring Stations



Source: AMEC – Core Sampling



Source: AMEC – Core Sampling



Source: AMEC – Meteorological and Air Quality Monitoring Stations

- **Physical environment baseline reports describe the physical conditions of the study area**

- **The studies include:**

- **Air Quality and Noise**
- **Hydrogeology**
- **Hydrology & Climate**
- **Geochemistry & Geology**
- **Geotechnical**
- **Water Quality**



Physical Environment YOUR COMMENTS, CONCERNS AND QUESTIONS . . .

Use a sticky note to post your comments here . . .



Biological Environment



Source: Minnow Environmental Inc.



Source: Minnow Environmental Inc.



Source: Minnow Environmental Inc.



Source: AMEC – Moose Line

- **Biological environment baseline reports describe the biological conditions and characteristics of the study area**

- **The studies include:**

- **Aquatic Biology**
- **Biodiversity & Protected Areas**
- **Soil**
- **Vegetation**
- **Wildlife**



Biological Environment YOUR COMMENTS, CONCERNS AND QUESTIONS . . .

Use a sticky note to post your comments here . . .



Human Environment



Source: AMEC - Gogama, ON



Source: Mattagami First Nation 2013 - IAMGOLD sponsored Hatchery



Source: ???



Source: IAMGOLD

- **Human environment baseline reports describe the socio-economic conditions of the study area and region**

- **The studies include:**

- **Aboriginal Traditional Knowledge**
- **Archaeology**
- **Land & Resource Use**
- **Socio-economic**
- **Visual Aesthetics**



Human Environment YOUR COMMENTS, CONCERNS AND QUESTIONS . . .

Use a sticky note to post your comments here . . .



Terms of Reference – Method to Describe Effects

- **The environmental assessment will describe environmental effects in terms of their:**
 - › Direction (is it a positive or negative effect?)
 - › Magnitude (how big is the effect?)
 - › Geographic extent (distance the effect goes?)
 - › Frequency (how many times will the effect occur over a period of time?)
 - › Duration (how long does the effect happen?)
 - › Reversibility (can the effect be reversed?)
 - › Likelihood (how likely is it that this effect will occur?)

- **The environmental assessment will assess cumulative effects (i.e., effects of the Project plus the effects of other projects/activities in the region)**

- **The environmental assessment will include a plan for preventing accidents and/or malfunctions**

- **The environmental assessment will assess effects of the environment (e.g., climate change) on the Project**



Côté Gold Project: Consultation

■ Stakeholders and Governments

- › First Nation and Métis groups (as identified by federal and provincial governments)
- › Gogama and other regional communities (Sudbury, Timmins)
- › Provincial and federal governments
- › Neighbours and adjacent land owners (Mesomikenda cottagers, mining interests, trappers, hunters)
- › Interested stakeholders (economic development agencies, businesses, forestry companies, environmental organizations)

■ Consultation Activities and Information Sources

- › Meetings and open houses
- › Site tours
- › Newsletters/Newspaper notices
- › Project website (www.iamgold.com)
- › Direct mail/e-mail to Project mailing list



Source: AMEC - Gogama Open House – November 2012

Consultation

YOUR COMMENTS, CONCERNS or QUESTIONS...

- **Things to consider:**

- › Are there any additional stakeholders that should be consulted?
- › Would you like to be involved? If so tell us how...

Use a sticky note to post your comments here . . .



Côte Gold Project: Community and Environment Team

- **Steve Woolfenden**

- › Manager, Corporate Environmental Assessments and Approvals

- **Aaron Steeghs**

- › Manager, Corporate Social Responsibility

- **Dave Brown**

- › Manager, Environmental Services

- **Cheryl Naveau**

- › Aboriginal and Community Relations

Contact us at: cotegold@iamgold.com



APPENDIX C
COMMENT FORMS (COMPLETED)

1. Which Open House did you attend?

Sudbury
(May 21, 2013)

Gogama
(May 22, 2013)

Timmins
(May 23, 2013)

MATTAGAMI

2. What are your questions or comments related to the assessment of alternatives for the Côté Gold Project?

3. What are your comments or concerns about the potential effects of the Côté Gold Project on the physical environment (e.g., air quality, noise, water quality) features?

WATER - CONCERNED ABOUT THE REMOVAL OF LARGE - FISH
EAGLES NESTS - DISTURB NESTING TIME

4. What are your comments or concerns about the potential effects of the Côté Gold Project on the human environment (e.g., land use, communities, the economy) features?

5. What are your comments or concerns about the potential effects of the Côté Gold Project on the biological environment (e.g., wildlife, fish) features?

DISPLACEMENT OF WILD LIFE

6. Would you like to be provided with any other information about the Côté Gold Project?

7. Do you have any information that might be relevant for the proposed Project/Project area?

8. How would you like to be involved in the environmental assessment process?

INVOLVED AS MUCH AS POSSIBLE THROUGH THE PROCESS

9. Are there other people or stakeholders that you believe would be interested in the Côté Gold Project?

- Yes (who? _____) No

10. How would you like to receive future information about the Côté Gold Project?

- Open Houses Website News Media
 Direct Mail Email In-person discussions with IAMGOLD representatives
 Other: _____

Optional Contact Information (please print)

Name:
Street:
Town/
Email:
Organ:



Thank you for your input!

Completed forms can be left with a member of our team or faxed/mailed by June 9, 2013 to:

IAMGOLD Corporation – Côté Gold Project
3 Mesomikenda Lake Road, P.O. Box 100, Gogama, ON P0M 1W0
E-mail: cotegold@iamgold.com; Fax: (705) 269-1199

*Information will be collected and used in accordance with the Environmental Assessment Act, and solely for the purpose of assisting the IAMGOLD Corporation in meeting environmental assessment and approval requirements. This material will be maintained on file for use during the study and may be included in Project documentation. **All comments will become part of the public record.** Personal information is protected under authority of the Freedom of Information and Protection of Privacy Act, Section 32, and is used solely for the purpose of completing this environmental assessment. Individuals will not be identified in any public documents or used for any purpose other than this Project.*

1. Which Open House did you attend?

Sudbury
(May 21, 2013)

Gogama
(May 22, 2013)

Timmins
(May 23, 2013)

2. What are your questions or comments related to the assessment of alternatives for the Côté Gold Project?

3. What are your comments or concerns about the potential effects of the Côté Gold Project on the physical environment (e.g., air quality, noise, water quality) features?

There will be a hole in the middle of our land.

4. What are your comments or concerns about the potential effects of the Côté Gold Project on the human environment (e.g., land use, communities, the economy) features?

It would stop people by enjoying the land, such as fishing, camping, hunting, etc.

5. What are your comments or concerns about the potential effects of the Côté Gold Project on the biological environment (e.g., wildlife, fish) features?

Creates migration problems for birds, fish, moose, beaver. The whole area will be affected.
Spawning beds will be ruined. Bird migrations will be altered.

6. Would you like to be provided with any other information about the Côté Gold Project?

7. Do you have any information that might be relevant for the proposed Project/Project area?

8. How would you like to be involved in the environmental assessment process?

Already involved by attending the open houses.
Also, through employment.

9. Are there other people or stakeholders that you believe would be interested in the Côté Gold Project?

Yes (who? _____) No

10. How would you like to receive future information about the Côté Gold Project?

Open Houses Website News Media
 Direct Mail Email In-person discussions with IAMGOLD representatives

Other: Already on the mailing list.

Optional Contact Information (please print)

Name: _____

Street Address: _____

Town/City: _____ Postal Code: _____

Email: _____ Phone: _____

Organization or Affiliation (if applicable): _____

Thank you for your input!

Completed forms can be left with a member of our team or faxed/mailed by June 9, 2013 to:

IAMGOLD Corporation – Côté Gold Project
3 Mesomikenda Lake Road, P.O. Box 100, Gogama, ON P0M 1W0
E-mail: cotegold@iamgold.com; Fax: (705) 269-1199

*Information will be collected and used in accordance with the Environmental Assessment Act, and solely for the purpose of assisting the IAMGOLD Corporation in meeting environmental assessment and approval requirements. This material will be maintained on file for use during the study and may be included in Project documentation. **All comments will become part of the public record.** Personal information is protected under authority of the Freedom of Information and Protection of Privacy Act, Section 32, and is used solely for the purpose of completing this environmental assessment. Individuals will not be identified in any public documents or used for any purpose other than this Project.*

1. Which Open House did you attend?

Sudbury
(May 21, 2013)

Gogama
(May 22, 2013)

Timmins
(May 23, 2013)

2. What are your questions or comments related to the assessment of alternatives for the Côté Gold Project?

3. What are your comments or concerns about the potential effects of the Côté Gold Project on the physical environment (e.g., air quality, noise, water quality) features?

4. What are your comments or concerns about the potential effects of the Côté Gold Project on the human environment (e.g., land use, communities, the economy) features?

*Concerned about the effect on our highway (144)
(pavement)*

5. What are your comments or concerns about the potential effects of the Côté Gold Project on the biological environment (e.g., wildlife, fish) features?

*Traplines and the effects on harvesting our
quotas.*

6. Would you like to be provided with any other information about the Côté Gold Project?

Yes, ~~the~~ pertaining to my sister's trapline G035

7. Do you have any information that might be relevant for the proposed Project/Project area?

8. How would you like to be involved in the environmental assessment process?

9. Are there other people or stakeholders that you believe would be interested in the Côté Gold Project?

Yes (who? _____) No

10. How would you like to receive future information about the Côté Gold Project?

- Open Houses Website News Media
 Direct Mail Email In-person discussions with IAMGOLD representatives
 Other: _____

Optional Contact Information (please print)

Name
Street
Town
Email
Orga



Thank you for your input!

Completed forms can be left with a member of our team or faxed/mailed by June 9, 2013 to:

IAMGOLD Corporation – Côté Gold Project
3 Mesomikenda Lake Road, P.O. Box 100, Gogama, ON P0M 1W0
E-mail: cotegold@iamgold.com; Fax: (705) 269-1199

*Information will be collected and used in accordance with the Environmental Assessment Act, and solely for the purpose of assisting the IAMGOLD Corporation in meeting environmental assessment and approval requirements. This material will be maintained on file for use during the study and may be included in Project documentation. **All comments will become part of the public record.** Personal information is protected under authority of the Freedom of Information and Protection of Privacy Act, Section 32, and is used solely for the purpose of completing this environmental assessment. Individuals will not be identified in any public documents or used for any purpose other than this Project.*

1. Which Open House did you attend?

Sudbury
(May 21, 2013)

Gogama
(May 22, 2013)

Timmins
(May 23, 2013)

✓ FPFN
(May 28, 2013)

2. What are your questions or comments related to the assessment of alternatives for the Côté Gold Project?

3. What are your comments or concerns about the potential effects of the Côté Gold Project on the physical environment (e.g., air quality, noise, water quality) features?

Main concern would be water quality being affected
in local communities

4. What are your comments or concerns about the potential effects of the Côté Gold Project on the human environment (e.g., land use, communities, the economy) features?

5. What are your comments or concerns about the potential effects of the Côté Gold Project on the biological environment (e.g., wildlife, fish) features?

Main concern would be the disturbance of the lake and
everything in it. When the lake + contents are
re-located, how do we know if that lake will be
able to thrive again?

6. Would you like to be provided with any other information about the Côté Gold Project?

✓

7. Do you have any information that might be relevant for the proposed Project/Project area?

8. How would you like to be involved in the environmental assessment process?

9. Are there other people or stakeholders that you believe would be interested in the Côté Gold Project?

Yes (who? _____) No

10. How would you like to receive future information about the Côté Gold Project?

Open Houses Website News Media
 Direct Mail Email In-person discussions with IAMGOLD representatives
 Other: _____

Optional Contact Information (please print)

Name: _____

Street Address: _____

Town/City: _____ Postal Code: _____

Email: _____ Phone: _____

Organization or Affiliation (if applicable): _____

Thank you for your input!

Completed forms can be left with a member of our team or faxed/mailed by June 9, 2013 to:

IAMGOLD Corporation – Côté Gold Project
3 Mesomikenda Lake Road, P.O. Box 100, Gogama, ON P0M 1W0
E-mail: cotegold@iamgold.com; Fax: (705) 269-1199

Information will be collected and used in accordance with the Environmental Assessment Act, and solely for the purpose of assisting the IAMGOLD Corporation in meeting environmental assessment and approval requirements. This material will be maintained on file for use during the study and may be included in Project documentation. All comments will become part of the public record. Personal information is protected under authority of the Freedom of Information and Protection of Privacy Act, Section 32, and is used solely for the purpose of completing this environmental assessment. Individuals will not be identified in any public documents or used for any purpose other than this Project.