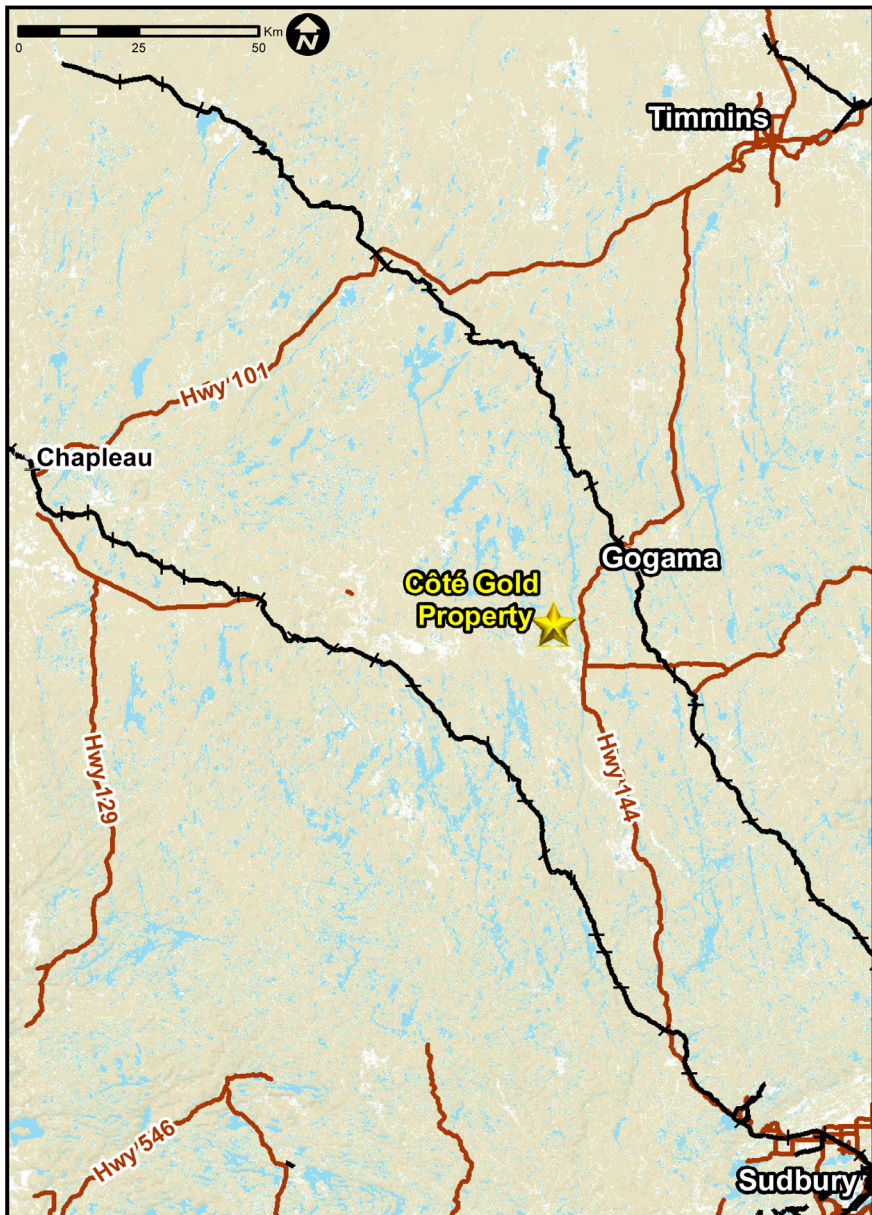


Let's Talk:

The Côté Gold Project Community Newsletter



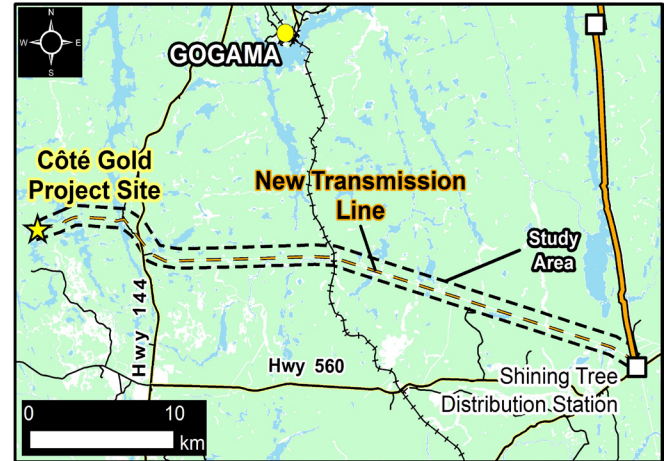
As the first greenfield development in the Timmins-Sudbury area in nearly a decade, the Côté Gold Project will have an incredible, positive impact on the northern Ontario economy. Once construction begins, about 1,000 jobs will be created to ready the Project for operations. Once in operations, about 400-500 workers will be needed.

Upcoming Consultation Opportunities – We want to hear from you!

Watch your email inbox or local newspaper for Notices with opportunities to provide input on the Côté Gold Project Closure Plan and Transmission Line.

Transmission Line

IAMGOLD is completing a Class Environmental Assessment (Class EA) for the installation of a 115 kilovolt (kV) transmission line connecting the Côté Gold Project to the Hydro One transmission network at the Shining Tree Distribution Station, which will provide power for the proposed mine. Changes to the Project design have reduced the amount of power required and allow us to consider this option. The proposed 115 kV Transmission line will replace the larger 230 kV line corridor that was considered previously in the Environmental Assessment. During the environmental assessment process, we heard concerns that the larger 230 kV line could increase access for hunting and have potential effects on wildlife. Our proposed use of the existing transmission line alignment and infrastructure (Shining Tree Distribution Station) is a positive alternative to the 230 kV line.



Closure Plan

IAMGOLD will be submitting a Closure Plan to the Ministry of Energy, Northern Development and Mines. This Plan will outline how IAMGOLD plans to rehabilitate the Project area when the mine closes.

Information about the Transmission Line and Closure Plan was shared at public open houses earlier this year in February and June and in the May 2018 issue of *Let's Talk*. If you did not have the opportunity to

share your comments during the open houses or have additional comments to share, please reach out to us directly at cotegold@iamgold.com and/or submit your comments during the upcoming public comment periods on the Closure Plan and the Environmental Screening Report for the Transmission Line.

Once ready for review, the documents will be available at: www.iamgold.com/cotegold-documents

Managing and Monitoring Social Effects

During the environmental assessment, IAMGOLD looked at how the Project may affect communities during construction, operations and closure of the mine. We considered what effects, if any, the Project could have on population size, housing, community infrastructure, traffic and other social and economic conditions in local First Nations, Métis and non-Indigenous communities. Because not all social and economic effects can be accurately predicted, IAMGOLD committed to working with affected communities to develop plans to manage and monitor potential effects. Social and economic effects can be difficult to predict; we don't know the answers to questions like:

- Will people move to local communities for job and business opportunities? If people move, how many will move?

- How will workers spend their incomes? Will they spend their incomes on things that improve their lives, or will they spend the money on things that will harm them?
- Will people try to achieve higher education levels to participate in mine employment?

Working in collaboration with communities, we will identify social and economic aspects that are important to the communities to manage and monitor. We want to find ways to enhance positive effects and minimize any potentially negative effects that communities may experience. IAMGOLD will be looking for community input into the development of these plans throughout the fall of 2018. If you have comments or questions, please reach out to us at cotegold@iamgold.com.

Managing and Monitoring Environmental Effects

IAMGOLD is committed to minimizing environmental effects. We will do this by applying measures to minimize or manage effects during construction, operations and when the project ends. We will also monitor environmental effects throughout every stage of the Project and adapt our efforts based on monitoring results and other inputs.

The development of Environmental Management and Monitoring Plans for construction and operation are essential for a successful project. Environmental Management and Monitoring Plans will give a high-level overview for site personnel, Indigenous communities and other stakeholders related to the design and safe operation, maintenance and surveillance of the Côté Gold Project.

- Conceptual Noise and Vibration Management and Monitoring Plan
- Conceptual Explosives and Blasting Management Plan
- Conceptual Aquatic Management and Monitoring Plan
- Conceptual Biodiversity Management and Monitoring Plan
- Conceptual Archaeology and Heritage Resource Management Plan.

These Plans are considered “living” documents and will be updated as needed to support environmental management activities during future permitting, development and operation phases.



Environmental Management and Monitoring Plans outlining environmental protection measures to mitigate potential environmental effects will include, but are not limited to:

- Water Management and Monitoring Plan
- Conceptual Waste Rock Management Plan
- Conceptual Emergency Response Plan
- Conceptual Waste Management Plan
- Conceptual Erosion and Sediment Control Plan
- Conceptual Greenhouse Gas Management and Monitoring Plan
- Conceptual Air Quality Management and Monitoring Plan
- Conceptual Spill Prevention and Response Plan
- Conceptual Soil Management Plan

Mining Facts and Figures

Côté Gold will be one in 10,000!

Did you know? It takes 10 to 15 years of exploration, data analysis, planning and financing to bring a mine into production (Ontario Mining Association). Exploration activities for the Côté Gold Project began in 2009, nearly a decade ago.

Did you know? Only one in 10 projects makes it to the drilling stage. One in 1,000 of those reveals a viable deposit and less than 1 in 10,000 becomes a mine (Ontario Mining Association).



History

It's been a fascinating journey so far! Exploration activities have been ongoing in the area since the early 1900s. In 2009, Trelawney began exploration. After purchasing Trelawney, IAMGOLD has done extensive drilling on the 516 km² site and discovered the Côté Gold resource is an incredible find.

The surface area is equivalent to 51 soccer fields and underground, it extends to more than 500 metres below the surface. Watch an animated, informative video that explains this in more detail on our website at <http://www.iamgold.com/cotegold>



Want to work for the Côté Gold Project?

The Côté Gold Project will offer a variety of careers in the areas of Mining, Mineral Processing, Engineering and Geology, and Administration and Support. Each of these areas will offer career opportunities requiring a variety of education, training and skills, including: entry-level, trade, technical and professional.

Visit the IAMGOLD Careers webpage for more information: www.iamgold.com/careers

- Register on the website to create a job alert and get notifications of future roles that meet your skills and qualifications
- Apply online

Interested in registering your interest to provide services or supplies during construction and operations?

Please reach out to us at cotegold@iamgold.com to share information about your business's services!



For more information please contact us: cotegold@iamgold.com

Join our Project mailing list to be kept informed about the Project and any upcoming events by sending an email to: cotegold@iamgold.com