



Appendix C

Newsletters, Fact Sheet and Information Handouts



Let's Talk:

The Côté Gold Project Community Newsletter



Côté Gold Project Location

A Project for the North!

The Côté Gold Project will be the first greenfield development in the Timmins-Sudbury area in nearly a decade. The Project will have a substantial positive impact on the northern Ontario economy.

The Project will rely heavily on northern and Indigenous communities for skilled jobs and expertise as the mine enters the construction phase, which is currently planned for early 2019. The Project is expected to create over 1,000 jobs during the construction phase of the Project and approximately 400-500 full-time jobs during operations.

IAMGOLD is proposing to construct, operate and eventually close the Côté Gold Project (the Project) – a new open pit gold mine near Gogama in northeastern Ontario.

Notice of Approval – Environmental Assessment

An Environmental Assessment (EA) is a government driven planning and decision-making process that is used to identify potential environmental effects of a project and associated mitigations to manage these effects. The EA predicts whether there will be significant adverse environmental effects from a project after mitigation measures have been implemented. An EA also includes a follow-up and monitoring program to verify the accuracy of the EA predictions and the effectiveness of the mitigation measures.

In Ontario, the Federal and Provincial EA processes can be coordinated so that a single EA meets the regulatory and legal requirements of both jurisdictions. The Ontario Ministry of Environment and Climate Change (MOECC) leads the EA process in Ontario pursuant to the *Environmental Assessment Act*. Federally, the EA process is led by the Canadian Environmental Assessment Agency (CEA Agency) under the *Canadian Environmental Assessment Act* (CEAA, 2012).

IAMGOLD received positive decision statements from both the CEA Agency (April 13, 2016) and from the MOECC (January 19, 2017) for the Côté Gold Project. A positive decision statement and Notice of Approval indicates that the Project is unlikely to have any significant adverse effects on the environment. The CEA Agency and the MOECC also provided IAMGOLD with conditions that the Company must comply with throughout construction, operation and closure of the Project. The Decision Statement from the CEA Agency and Notice of Approval from the MOECC can be found at the following web pages:

CEA Agency: <http://www.ceaa.gc.ca/050/details-eng.cfm?evaluation=80036>

MOECC: <https://www.ontario.ca/page/approval-cote-gold-project-environmental-assessment>

IAMGOLD: <http://www.iamgold.com/English/operations/development-projects/cote-gold-project-ontario/default.aspx>

Introducing Sumitomo Metal Mining Co. Ltd.

In June 2017, IAMGOLD also announced the signing of an Investment Agreement with Sumitomo Metal Mining Co. Ltd (Sumitomo). Sumitomo is a Japan-based global mining company.

The Investment Agreement outlines financing and operating roles for the Project. IAMGOLD will remain the majority interest holder in the Project, owning 70% of the Project, Sumitomo will hold a 30% interest. The day-to-day development and operation of the Project will be managed by IAMGOLD.

As the majority owner and operator of the Project, IAMGOLD remains committed to maintaining and further developing its relationships with neighbouring communities, government regulators, and local Indigenous communities.

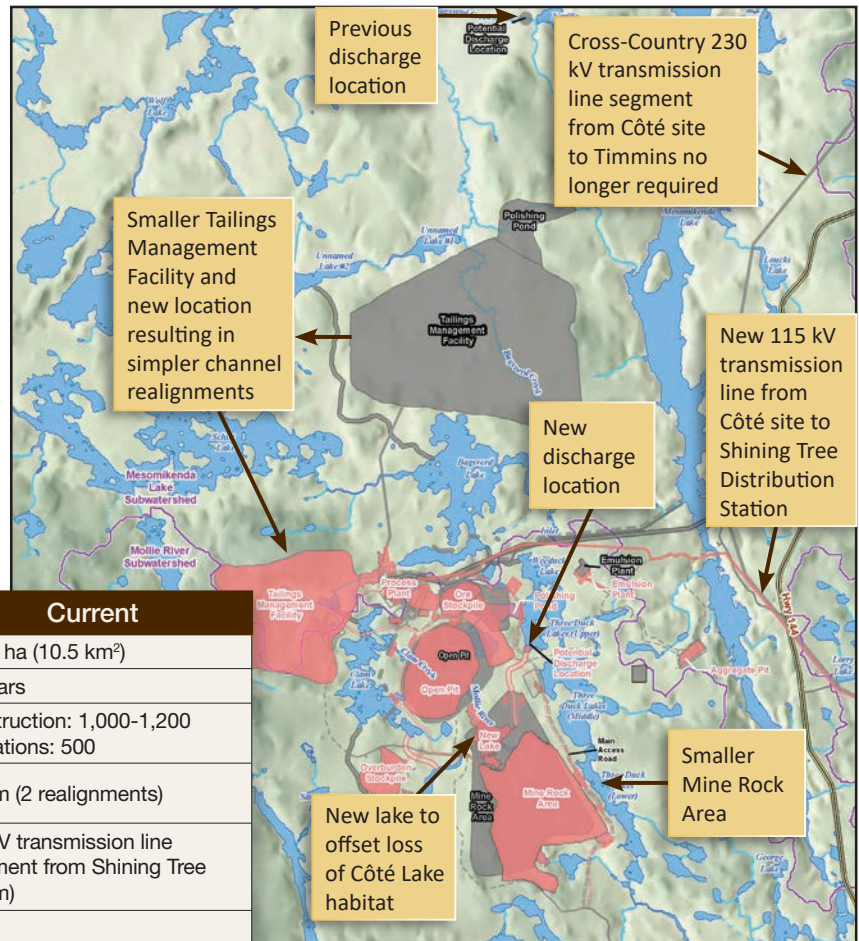
Pre-Feasibility Study

Over the past couple of years, IAMGOLD has been conducting technical design and engineering studies with the objective of completing a pre-feasibility study (PFS) for the Côté Gold Project. Pre-Feasibility studies assess different options that the Company could pursue to improve the environmental performance of the Project while ensuring it is technically and economically feasible. In June 2017, IAMGOLD announced that the Company completed the PFS for the Côté Gold Project with positive results. The PFS confirmed that the enhanced Project was technically and economically feasible. Now that the PFS is complete, IAMGOLD has initiated a feasibility study for the Project. The feasibility study will allow IAMGOLD to forecast a detailed budget and schedule for the Project, and will ultimately be used to support a construction decision on the Project, which is expected in late 2018. IAMGOLD will complete the feasibility study in combination with pursuing other environmental permits required to initiate construction.

Environmental Effects Review

During the environmental assessment process, IAMGOLD received valuable feedback from government regulators, technical experts, local stakeholders and Indigenous communities regarding the Project. IAMGOLD carefully considered this feedback and over the past year has worked diligently to revise the design of the Project to further reduce potential effects on the environment and local communities.

To ensure changes to the Project design are well communicated to government regulators, the public and Indigenous communities, IAMGOLD will be preparing and engaging these parties on an Environmental Effects Review (EER). The EER will provide an overview of any changes to the potential effects identified in the EA process and demonstrate how any revisions to the Project design still ensure the final Project complies with Federal and Provincial conditions of approval to the Final EIS / EA.



Component	Submitted	Current
Footprint	1,700 hectares (ha) (17 km ²)	1,050 ha (10.5 km ²)
Life of Mine	15 years	17 years
Workforce	Construction: 1,000-1,200 Operations: 500	Construction: 1,000-1,200 Operations: 500
Watercourse Realignments	7.9 km (7 realignments)	2.4 km (2 realignments)
Transmission Line Alignment	230 kilovolt (kV) Cross Country Alignment from Timmins (approximately 120 km)	115 kV transmission line alignment from Shining Tree (44 km)
Closure Concept	Realignment from Chester Lake to Clam Lake and Bagsverd Creek realignment to remain in place and functional post closure	Realignments decommissioned and naturalized
Mining		
Footprint	210 ha (2.1 km ²)	145 ha (1.45 km ²)
Mining Rate	60,000 tonnes per day (tpd)	36,000 tpd
Overburden	20 Million tonnes (Mt)	11 Mt
Ore	261 Mt	196 Mt
Mine Rock Area		
Footprint	400 ha (4.0 km ²)	300 ha (3.0 km ²)
Quantity	850 Mt	559 Mt
Tailings Management Facility (TMF)		
Location	4.5 km north of open pit (overprinting portions of Bagsverd Creek)	2.8 km northwest of open pit between Three Duck Lakes and Bagsverd Lake
Footprint	840 ha (8.4 km ²)	478 ha (4.8 km ²)
Storage Capacity	261 Mt (193 Million cubic metres (Mm ³))	200 Mt (130 Mm ³)

Key Optimizations of the Côté Gold Project

The EER Report will be submitted to the federal and provincial governments and will be shared publicly.

Proposed Project Schedule

Construction of the Project is expected to commence early in 2019, after the submission of the EER and necessary permits are complete. The proposed gold mine would begin operation in 2021.



Construction
2 years: 2019-2021

Operation
17 years: 2021-2038

Closure
2 years: 2039-2040

Upcoming Consultation and Community Engagement

To support ongoing communication about the Project, IAMGOLD will hold open houses and community meetings. We invite you to come and learn about the Project, provide your feedback, ask questions and get involved!

Look for Notice of Open Houses in your local newspaper and on the IAMGOLD website:

<http://www.iamgold.com/English/operations/development-projects/cote-gold-project-ontario/default.aspx>

IAMGOLD is grateful for, and looks forward to your continued participation!



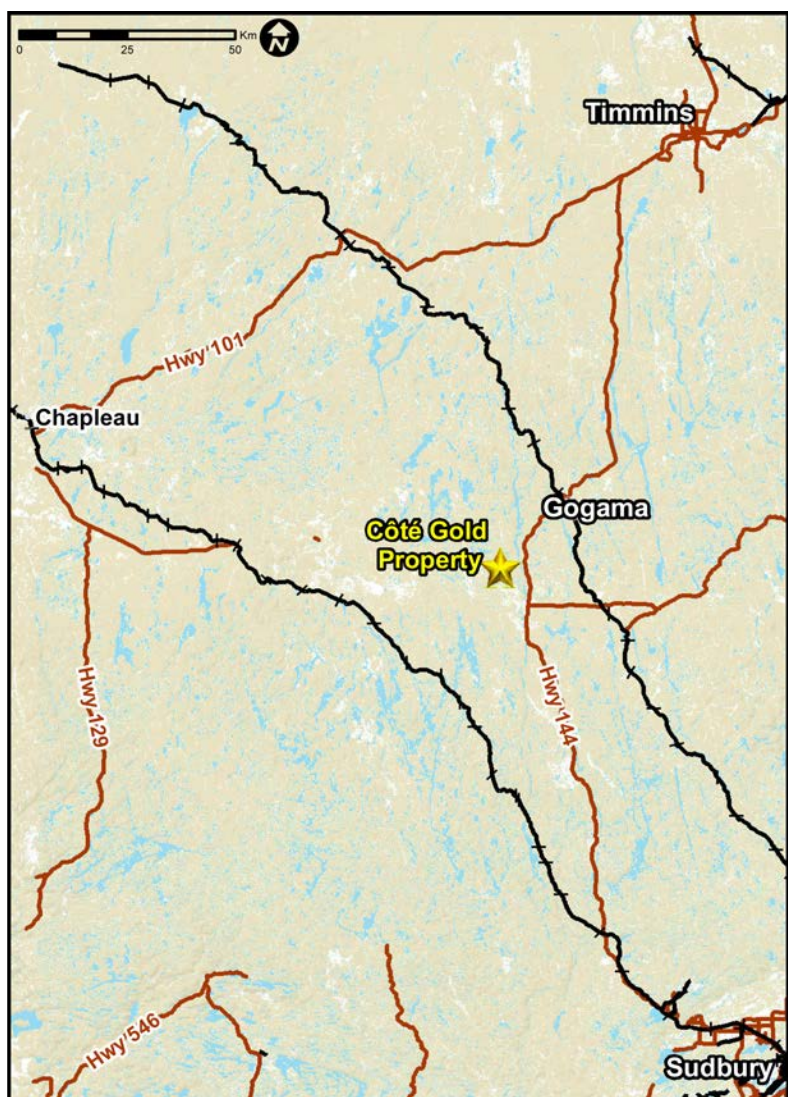
For more Information please contact us: cotegold@iamgold.com

Join our Project mailing list to be kept informed about the Project and any upcoming events by sending an email to: cotegold@iamgold.com



Let's Talk:

The Côté Gold Project Community Newsletter



Environmental Effects Review of the Côté Gold Project

During the environmental assessment (EA) process, IAMGOLD received valuable feedback from government regulators, technical experts, local stakeholders and Indigenous communities regarding the Project. IAMGOLD carefully considered this feedback and worked to revise the Project design to further reduce potential effects on the environment and local communities.

An Environmental Effects Report is being prepared to show how changes to the Project design continue to meet the Federal and Provincial conditions of approval of the Project. Results so far show:

The optimized Project has similar or reduced potential for environmental effects

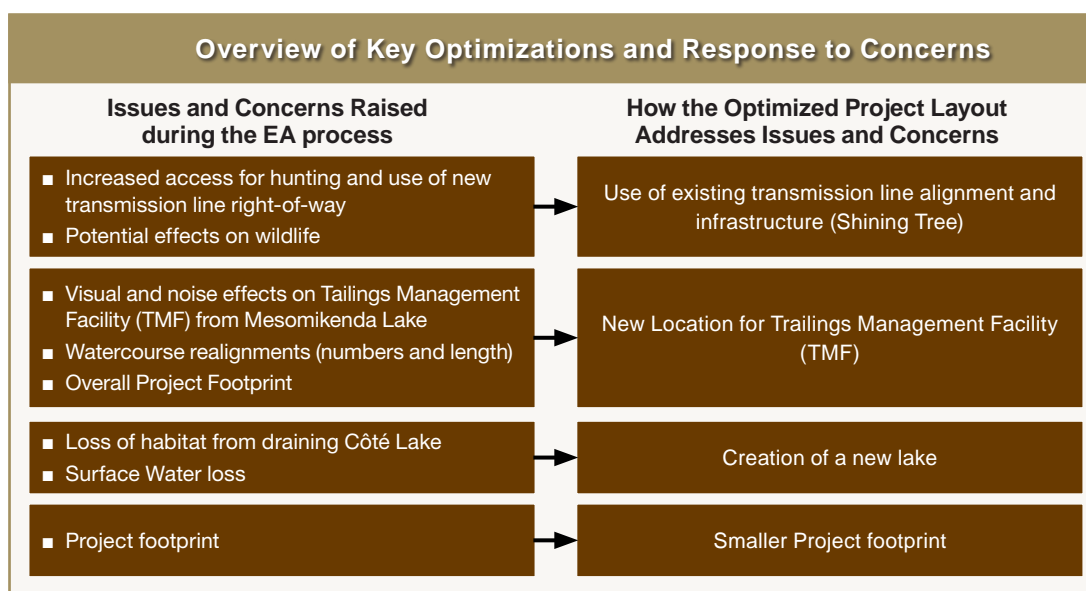
The conclusions from the EA are still valid.

The table on page 2 highlights predicted changes in effects for each area studied.

Continued on page 2

Since our last newsletter in February 2018, IAMGOLD has been working hard to review and compare the predicted effects of the optimized Project design with the environmental assessment (EA). We have continued to engage and consult with Indigenous communities, stakeholders and governments and held three public open houses in February (Gogama, Timmins and Sudbury) to share information about the Project and proposed design improvements.

Topic	Changes to Predicted Effects
Air, Noise and Vibration	<ul style="list-style-type: none"> Reduced effects on air quality <ul style="list-style-type: none"> Reduced emissions (smaller mine fleet, condensed Project layout) About 28% reduction in predicted greenhouse gas emissions (less equipment required) Reduced noise emissions <ul style="list-style-type: none"> Mitigation proposed in EA for nighttime operations no longer required Continued commitment for monitoring of air, noise and vibration
Water (groundwater and surface water)	<ul style="list-style-type: none"> Reduced groundwater and surface water effects <ul style="list-style-type: none"> Fewer watercourse realignments (from 7 to 2) No longer impacting Bagsverd Creek Shortened pit flooding during Closure & Post-closure Quicker return of groundwater levels to pre-mining conditions Water quality predictions are consistent with the EA
Terrestrial and Aquatic Biology	<ul style="list-style-type: none"> Reduced effects on aquatic and terrestrial habitat <ul style="list-style-type: none"> Smaller Project footprint Less clearing for the new transmission line route Fewer water realignment channels Creation of a new lake Relocation and smaller tailings management facility avoids Painted Turtle habitat and other sensitive species
Land Use	<ul style="list-style-type: none"> 4M Circle Canoe Route will no longer be affected by watercourse realignments and will be accessible throughout all project phases; facilitated access at one portage location (no change from EA) Use of existing transmission line right-of-way addresses concerns about hunting access along route shown in EA
Archeology and Built Heritage	<ul style="list-style-type: none"> No archaeological or built heritage resources will be affected by the Project (same as EA prediction) Based on feedback during the EA: <ul style="list-style-type: none"> Additional field work planned in 2018 Discussions about protocols for curation and storage of artifacts A licensed archaeologist will monitor the dewatering of Côté Lake
Socio-economics	<ul style="list-style-type: none"> Improved economic benefits from longer mine operation (from 15 to 17 years) Employment opportunities will be longer due to longer mine life Positive impact to local businesses and service providers Increased Government revenue from taxation to support local communities and services
Traditional Land Use	<ul style="list-style-type: none"> Use of existing transmission line right-of-way addresses concerns about access for hunting and use of new transmission line right-of-way proposed in the EA and reduces potential effects on wildlife
Visual Aesthetics	<ul style="list-style-type: none"> The Mine Rock Area will be less visible compared to the EA design; it has a smaller footprint, is further from the shoreline and blends more with the natural topography The Tailings Management Facility is in a new location and has a smaller footprint; the dam height is higher and so it will be visible from some local lakes
The EER Report will be submitted to the federal and provincial governments and will be shared publicly.	



Transmission Line Environmental Assessment

Your ideas are making a difference. Since the submission of the environmental assessment (EA), IAMGOLD has been receiving and reviewing feedback from government regulators, technical experts, local stakeholders and Indigenous communities. These insights contributed to IAMGOLD optimizing the Project with a reduced production rate that has decreased energy requirements. The 120 km cross-country 230 kV

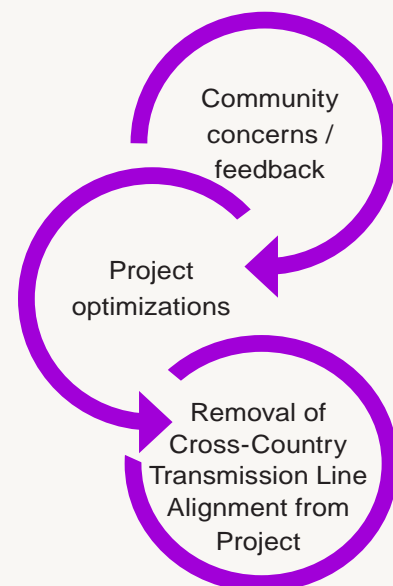


transmission line presented in the EA is no longer required; instead, a shorter 44 km 115 kV Shining Tree transmission line alignment is being proposed (it will be owned and operated by IAMGOLD), and will connect to an existing line at Shining Tree. The Shining Tree transmission line alignment will require minor clearing of an existing right-of-way from the Shining Tree Substation to the Project site. IAMGOLD will construct the Shining Tree transmission line in accordance with commitments made during the EA process including avoiding the use of herbicides.

The transmission line EA process requires a screening report, which is currently in preparation. Opportunities to provide input on the EA process are available through:

- Public open houses (see www.iamgold.com/cotegold-events for more information)
- Reach out directly to IAMGOLD (see contact information on page 6)
- 30-day review and comment period after screening report is filed.

Existing Corridor between Project Site and Shining Tree DS



Tailings Management Facility and Mine Rock Area

Since acquiring additional interest in adjacent mineral claims, IAMGOLD has been considering feedback on how to make the Project's layout more compact and efficient. IAMGOLD identified several alternatives for tailings and mine rock storage and is assessing these options from environmental, social, technical and cost perspectives. IAMGOLD will share preliminary results from the alternatives assessment during the upcoming

open houses and welcomes your feedback.

This assessment will also be used for the *Fisheries Act* Metal Mining Effluent Regulations Schedule 2 regulatory amendment process. Additional opportunities will be available to participate in the process led by Environment and Climate Change Canada.

Discovering the Past

For the past eight years, Woodland Heritage Services and Woodland Heritage Northeast have been conducting archaeological studies for the Côté Gold Project. These studies have focused on areas associated with the mine site layout, the transmission line and several aggregate extraction areas.

Archaeological work in the Project area resulted in the identification of 43 archaeological sites and features, including:

- 23 pre-contact archaeological sites
- 11 post-contact archaeological sites largely related to the early exploration period of Chester and Yeo Townships, including mineral exploration
- 9 portages.

This archaeological work has helped us understand how people lived and used the lands in the Project area over the last several thousand years. It has also proved to be important in developing our understanding of how Indigenous communities used smaller lakes and waters, possibly related to use during different times of the year where these peripheral areas



were used to harvest resources such as food and medicines.

From a historic mining exploration perspective, the major prospecting camps within the Project area were located

and more detailed archaeological work was completed on the Shepard Camp and the Shannon Cabin. The first discovery of gold on the property was nearly a century ago, and today IAMGOLD is well on its way to seeing it developed.

Clock Movement



Projectile Point



Mine Closure

We're thinking ahead. Not only are we diligently caring for the environment while we plan the Project, but we're looking beyond that, to the time when the mine is closed.

The *Mining Act* and the Mine Rehabilitation Code of Ontario determine what a mine closure plan must include.

The main goal of closure is to rehabilitate the Project area to as near a natural state as practical. This will promote vegetation growth to support habitat for local species diversity and aquatic habitat to support healthy fish populations. Project infrastructure will be removed,

disturbed areas will be rehabilitated and surface drainage will be re-established. Access will be maintained or re-established for us, our children, grandchildren and future generations.

Monitoring will occur throughout the closure phase. "Closed Out" as defined in the *Mining Act* means "the final stage of closure has been reached and that all requirements of a Closure Plan have been complied with".

We are interested in hearing your views on how the land could be restored once mining activities end.

Proposed Project Schedule

Construction of the Project is expected to commence early in 2019, after the submission of the EER and necessary permits are complete. The proposed gold mine would begin operation in 2021.



Construction
2 years: 2019-2021

Operation
17 years: 2021-2038

Closure
2 years: 2039-2040

Want to work for the Côté Gold Project?

The Côté Gold Project is looking to hire a General Manager and will begin hiring for key roles this year. Visit the IAMGOLD Careers webpage for more information: www.iamgold.com/careers

- Register on the website to create a job alert to be notified of future roles that meet your skills and qualifications
- Apply online!

Upcoming Consultation and Community Engagement

To support ongoing communication about the Project, IAMGOLD will hold open houses and community meetings. We invite you to come and learn about the Project, provide your feedback, ask questions and get involved!

Look for Notice of Open Houses in your local newspaper and on the IAMGOLD website:
www.iamgold.com/cotegold-events

IAMGOLD is grateful for, and looks forward to your continued participation!

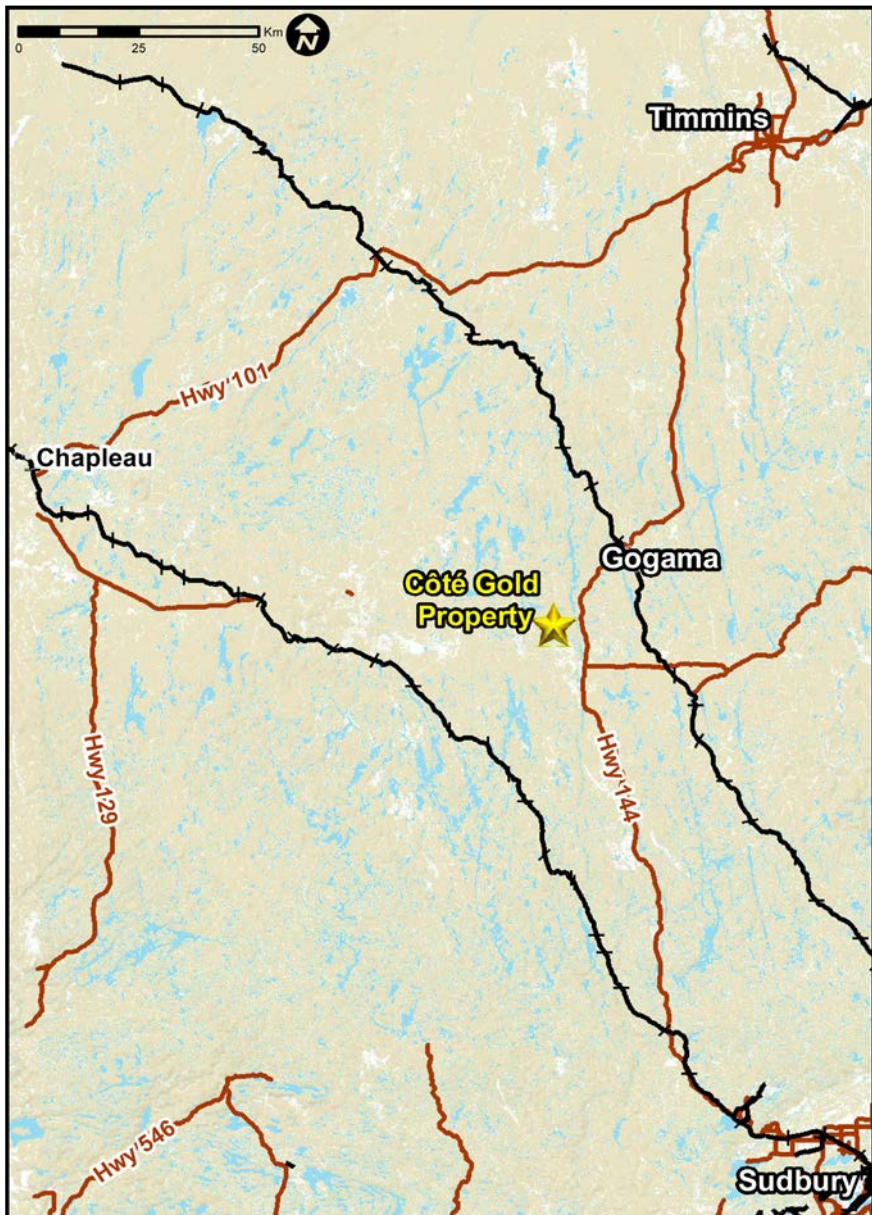


For more Information please contact us: cotegold@iamgold.com

Join our Project mailing list to be kept informed about the Project and any upcoming events by sending an email to: cotegold@iamgold.com

Let's Talk:

The Côté Gold Project Community Newsletter



As the first greenfield development in the Timmins-Sudbury area in nearly a decade, the Côté Gold Project will have an incredible, positive impact on the northern Ontario economy. Once construction begins, about 1,000 jobs will be created to ready the Project for operations. Once in operations, about 400-500 workers will be needed.

Upcoming Consultation Opportunities – We want to hear from you!

Watch your email inbox or local newspaper for Notices with opportunities to provide input on the Côté Gold Project Closure Plan and Transmission Line.

Transmission Line

IAMGOLD is completing a Class Environmental Assessment (Class EA) for the installation of a 115 kilovolt (kV) transmission line connecting the Côté Gold Project to the Hydro One transmission network at the Shining Tree Distribution Station, which will provide power for the proposed mine. Changes to the Project design have reduced the amount of power required and allow us to consider this option. The proposed 115 kV Transmission line will replace the larger 230 kV line corridor that was considered previously in the Environmental Assessment. During the environmental assessment process, we heard concerns that the larger 230 kV line could increase access for hunting and have potential effects on wildlife. Our proposed use of the existing transmission line alignment and infrastructure (Shining Tree Distribution Station) is a positive alternative to the 230 kV line.



Closure Plan

IAMGOLD will be submitting a Closure Plan to the Ministry of Energy, Northern Development and Mines. This Plan will outline how IAMGOLD plans to rehabilitate the Project area when the mine closes.

Information about the Transmission Line and Closure Plan was shared at public open houses earlier this year in February and June and in the May 2018 issue of *Let's Talk*. If you did not have the opportunity to

share your comments during the open houses or have additional comments to share, please reach out to us directly at cotegold@iamgold.com and/or submit your comments during the upcoming public comment periods on the Closure Plan and the Environmental Screening Report for the Transmission Line.

Once ready for review, the documents will be available at: www.iamgold.com/cotegold-documents

Managing and Monitoring Social Effects

During the environmental assessment, IAMGOLD looked at how the Project may affect communities during construction, operations and closure of the mine. We considered what effects, if any, the Project could have on population size, housing, community infrastructure, traffic and other social and economic conditions in local First Nations, Métis and non-Indigenous communities. Because not all social and economic effects can be accurately predicted, IAMGOLD committed to working with affected communities to develop plans to manage and monitor potential effects. Social and economic effects can be difficult to predict; we don't know the answers to questions like:

- Will people move to local communities for job and business opportunities? If people move, how many will move?

- How will workers spend their incomes? Will they spend their incomes on things that improve their lives, or will they spend the money on things that will harm them?
- Will people try to achieve higher education levels to participate in mine employment?

Working in collaboration with communities, we will identify social and economic aspects that are important to the communities to manage and monitor. We want to find ways to enhance positive effects and minimize any potentially negative effects that communities may experience. IAMGOLD will be looking for community input into the development of these plans throughout the fall of 2018. If you have comments or questions, please reach out to us at cotegold@iamgold.com.

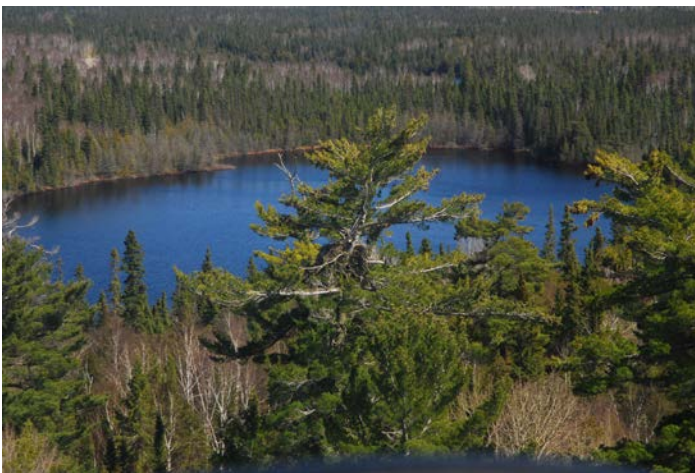
Managing and Monitoring Environmental Effects

IAMGOLD is committed to minimizing environmental effects. We will do this by applying measures to minimize or manage effects during construction, operations and when the project ends. We will also monitor environmental effects throughout every stage of the Project and adapt our efforts based on monitoring results and other inputs.

The development of Environmental Management and Monitoring Plans for construction and operation are essential for a successful project. Environmental Management and Monitoring Plans will give a high-level overview for site personnel, Indigenous communities and other stakeholders related to the design and safe operation, maintenance and surveillance of the Côté Gold Project.

- Conceptual Noise and Vibration Management and Monitoring Plan
- Conceptual Explosives and Blasting Management Plan
- Conceptual Aquatic Management and Monitoring Plan
- Conceptual Biodiversity Management and Monitoring Plan
- Conceptual Archaeology and Heritage Resource Management Plan.

These Plans are considered “living” documents and will be updated as needed to support environmental management activities during future permitting, development and operation phases.



Environmental Management and Monitoring Plans outlining environmental protection measures to mitigate potential environmental effects will include, but are not limited to:

- Water Management and Monitoring Plan
- Conceptual Waste Rock Management Plan
- Conceptual Emergency Response Plan
- Conceptual Waste Management Plan
- Conceptual Erosion and Sediment Control Plan
- Conceptual Greenhouse Gas Management and Monitoring Plan
- Conceptual Air Quality Management and Monitoring Plan
- Conceptual Spill Prevention and Response Plan
- Conceptual Soil Management Plan

Mining Facts and Figures

Côté Gold will be one in 10,000!

Did you know? It takes 10 to 15 years of exploration, data analysis, planning and financing to bring a mine into production (Ontario Mining Association). Exploration activities for the Côté Gold Project began in 2009, nearly a decade ago.

Did you know? Only one in 10 projects makes it to the drilling stage. One in 1,000 of those reveals a viable deposit and less than 1 in 10,000 becomes a mine (Ontario Mining Association).



History

It's been a fascinating journey so far! Exploration activities have been ongoing in the area since the early 1900s. In 2009, Trelawney began exploration. After purchasing Trelawney, IAMGOLD has done extensive drilling on the 516 km² site and discovered the Côté Gold resource is an incredible find.

The surface area is equivalent to 51 soccer fields and underground, it extends to more than 500 metres below the surface. Watch an animated, informative video that explains this in more detail on our website at <http://www.iamgold.com/cotegold>



Want to work for the Côté Gold Project?

The Côté Gold Project will offer a variety of careers in the areas of Mining, Mineral Processing, Engineering and Geology, and Administration and Support. Each of these areas will offer career opportunities requiring a variety of education, training and skills, including: entry-level, trade, technical and professional.

Visit the IAMGOLD Careers webpage for more information: www.iamgold.com/careers

- Register on the website to create a job alert and get notifications of future roles that meet your skills and qualifications
- Apply online

Interested in registering your interest to provide services or supplies during construction and operations?

Please reach out to us at cotegold@iamgold.com to share information about your business's services!



For more Information please contact us: cotegold@iamgold.com

Join our Project mailing list to be kept informed about the Project and any upcoming events by sending an email to: cotegold@iamgold.com



Côte Gold Project

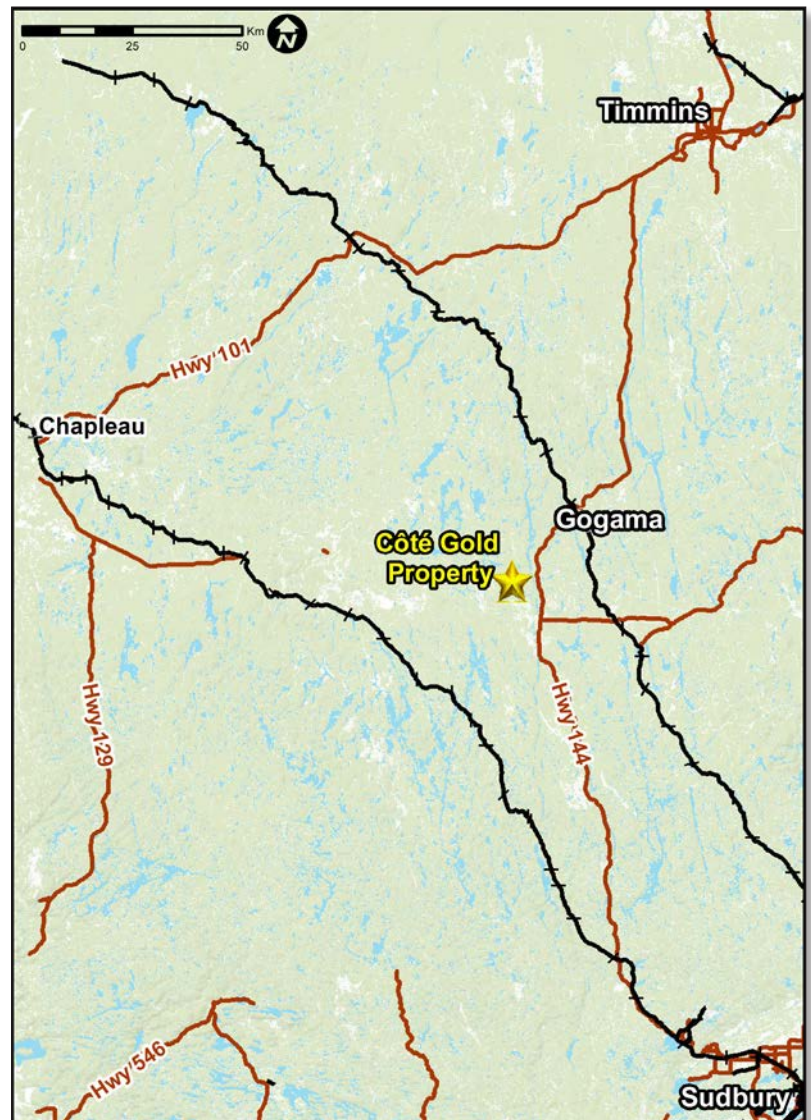
Frequently Asked Questions

Where is the Côte Gold Project located?

The Côte Gold Project, a proposed open pit gold mine, is located in northeastern Ontario halfway between two of the world's premier mining camps, Sudbury and Timmins. Specifically, it is approximately 20 kilometers (km) southwest of Gogama, 200 km northwest of Sudbury and 130 km southwest of Timmins in the Chester and Yeo Townships.

Who owns the Côte Gold Project?

The Côte Gold Project is a joint venture between IAMGOLD and Japanese mining company Sumitomo Metal Mining Co. Ltd. IAMGOLD owns 64.75% of the Project and Sumitomo has a 27.75% interest. This is Sumitomo's first investment in Canada in decades and speaks to the strength and attractiveness of the northern Ontario Project.



Project Location



When would the mine start producing gold?

Based on the current schedule, it is anticipated that gold production will begin by 2021. First, we must obtain all the necessary permits, which we expect to receive in 2018 followed by the construction phase of the mine, which is expected to begin in 2019 and continue through to 2021. The mine is expected to operate for about 17 years.

How many jobs will be available?

The Project is expected to create over 1,000 construction jobs during development and about 300-400 full-time jobs during operations. It will rely heavily on northern communities for skilled jobs and expertise and we look forward to working closely with Indigenous and local communities to ensure that this is truly a northern Ontario project. Overall, the Côté Gold Project will have a significant positive impact on the economies of Sudbury, Timmins and throughout northern Ontario. This will be the first greenfield development in the Timmins-Sudbury corridor in decades.

Currently, the Project employs 23 people, most of whom live in Gogama and the surrounding communities. Local contracts are in place for services such as hauling, brush clearing, road construction, pipe fusing, core box construction and carpentry.

What type of jobs will be available?

The Project will create a significant number of good paying jobs. To begin, there will be a requirement for construction jobs. Going forward, the Project will need workers to fill a wide range of positions that support mining operations, including mining and mineral processing, administration, finance, communications, human resources and information technology. As the Project progresses, we will be looking for outstanding people who share our aspirations, want to be part of the Project, and who recognize our commitment to Zero Harm.

For more information on opportunities, please visit our Careers page at www.iamgold.com/cotegoldcareers

What is Zero Harm?

Zero Harm means looking after our people, communities, and environment. It is our commitment to work continuously

towards ensuring excellence in human health, minimizing our environmental impact and working collaboratively with our host communities. Mining in a responsible manner and being accountable for our actions is at the core of who we are and we strive to empower everyone who has a stake in our success to play the part.



Where can I get information about Côté Gold procurement and business opportunities?

If you are interested in either supplying or installing industrial equipment, or building for the Côté Gold Project, please contact Steve Bowles at steven_bowles@iamgold.com. During the construction phase, we will require many services and supplies of materials. Many large equipment packages will be destined for specialized suppliers but a considerable amount of supplies will be locally sourced. The installation of industrial equipment will also require several trades and specialized labour related to installation of industrial equipment. As part of our procurement policies, we will prioritize suppliers that provide benefits, employment and training to Indigenous communities impacted by the Project.

Have all the necessary approvals been obtained by IAMGOLD?

The Project received Environmental Assessment (EA) approvals from the Federal Government (April 2016) and the Provincial Government (January 2016). The next step involves submitting an Environmental Effects Review. This report will provide an overview of the changes IAMGOLD has been making to reflect the feedback received from government, local and Indigenous communities. Many of the changes will minimize environmental impact. To ensure changes to the Project design are well communicated to government regulators, the public and Indigenous communities, IAMGOLD will be reaching out as part of the process for developing the Environmental Effects Review report. Opportunities to provide input will be advertised in local papers. This is the last stage before we start the permitting process for the construction and operation of the Côté Gold Project.

What is an Environmental Effects Review?

To ensure changes to the Project design are well communicated to government regulators, the public and Indigenous communities, IAMGOLD will be preparing and engaging these parties as part of the process for developing the Environmental Effects Review report. Opportunities to provide input will be advertised in local papers.

What changes have been made to date to the Project as a result of the feedback received from government, local and Indigenous communities?

The key changes to improve the project and minimize environmental impact include:

1. Reduction of electricity consumption and lower greenhouse gas emissions through the adoption of a smaller daily production rate and smaller mill.
2. Reduction of the amount of potential land disturbance through the removal of a new 230 kv line from the Project.
3. Reduction of the environmental footprint, fewer watercourse realignments and elimination of potential effects on painted turtles by relocating the tailings management facility further away from Mesomikenda Lake. This will also reduce potential dust impact on cottagers in the area.
4. Reduction of fish habitat loss and creation of a new lake to replace the fish habitat from Côté Lake.
5. Increase in long-term jobs and economic benefit for Indigenous and local communities by extending the life of the mine.

What will the Project look like?

The planned open pit will cover an area of approximately 145 hectares, with a depth of 550 metres. In addition to the proposed open pit mine, there will be an ore processing plant, a mine rock area (MRA), a tailings management facility (TMF), an accommodations complex, an administrative complex and other related buildings and infrastructure.

The figure below shows the optimized Project layout, highlighting the changes from the previously approved Project layout.

Key Optimizations of the Côté Gold Project

Component	Submitted	Current
Footprint	1,700 hectares (ha) (17 km ²)	1,050 ha (10.5 km ²)
Life of Mine	15 years	17 years
Workforce	Construction: 1,000-1,200 Operations: 500	Construction: 1,000-1,200 Operations: 500
Watercourse Realignments	7.9 km (7 realignments)	2.4 km (2 realignments)
Transmission Line Alignment	230 kilovolt (kV) Cross Country Alignment from Timmins (approximately 120 km)	115 kV transmission line alignment from Shining Tree (44 km)
Closure Concept	Realignment from Chester Lake to Clam Lake and Bagsverd Creek realignment to remain in place and functional post closure	Realignments decommissioned and naturalized
Mining		
Footprint	210 ha (2.1 km ²)	145 ha (1.45 km ²)
Mining Rate	60,000 tonnes per day (tpd)	36,000 tpd
Overburden	20 Million tonnes (Mt)	11 Mt
Ore	261 Mt	196 Mt
Mine Rock Area		
Footprint	400 (ha) (4.0 km ²)	300 ha (3.0 km ²)
Quantity	850 Mt	559 Mt
Tailings Management Facility (TMF)		
Location	4.5 km north of open pit (overprinting portions of Bagsverd Creek)	2.8 km northwest of open pit between Three Duck Lakes and Bagsverd Lake
Footprint	840 ha (8.4 km ²)	478 ha (4.8 km ²)
Storage Capacity	261 Mt (193 Million cubic meters Mm ³)	200 Mt (130 Mm ³)

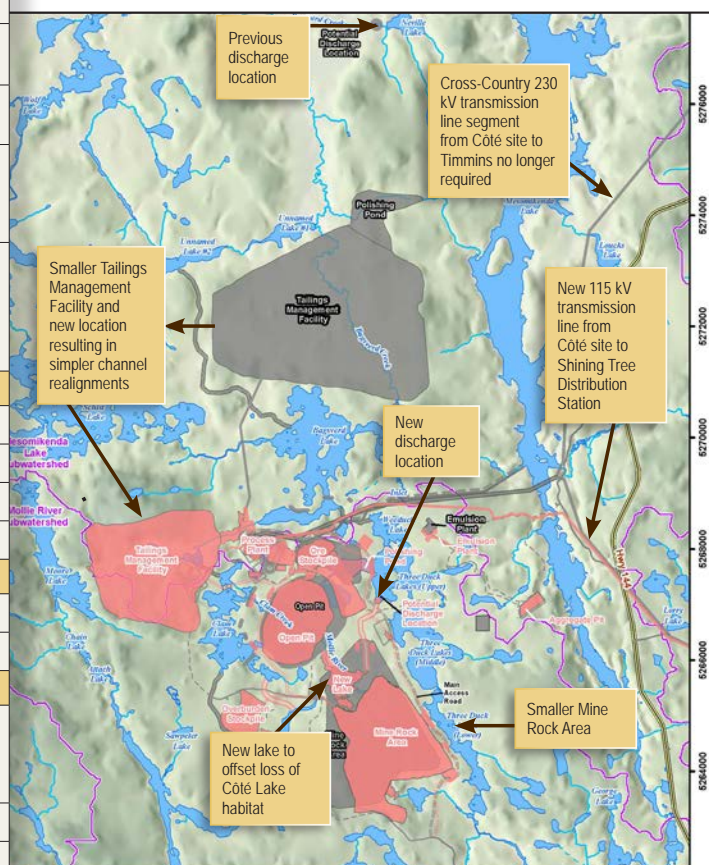
How much gold will be produced?

It is anticipated that processing would occur at a rate of approximately 36,000 tonnes per day. Production of gold will be on average 1,285 ounces daily.

How does gold mining work?

Ore (material containing marketable quantities of gold) and mine rock (rock without or insufficient concentrations of gold) are extracted from either an open pit (as is the case at the Côté Gold Project) and/or an underground mine.

The ore is then processed to remove the gold. Cyanide, a proven reagent, will be used to



recover the gold from gold-bearing ores. This is a standard practice throughout the industry. This process will be designed using industry best practices to ensure responsible management and use of cyanide. After its use in the treatment circuit, most of the residual cyanide, consisting of crushed rock and process water from the processing plant, will be destroyed through an industry standard in-plant cyanide destruction process.

Ore processing occurs at a processing plant and goes through a number of steps including:

- Crushing and grinding of the ore;
- Gravity separation;
- Chemical separation of the gold from the crushed rock; and
- Smelting and pouring the gold for further processing (at another location).

The ore from the Côté Gold Project will be processed on-site at an ore-processing plant.

Why is the Côté Project an open pit mine?

Open-pit mining was chosen for the Côté Gold Project because the gold deposit is shallower and closer to the surface in comparison to other mines. Using an underground method requires deeper shafts and ramps when deposits are located deep underground.

IAMGOLD is an experienced gold mining company and the Côté Gold Project will be developed and operated in a responsible and sustainable manner, with the ultimate goal of returning the site to a natural condition once commercial operations cease.

What will happen when the mine closes?

Our plan for the closure of the mine is to return the site to a natural state, capable of supporting plant, wildlife and fish habitats by the end of mine life.

The Ontario *Mining Act* and its associated regulations and codes will govern closure of the Côté Gold Project. The *Mining Act* requires that a closure plan be filed for the Project before it is undertaken, and that financial assurance is provided prior to substantive development to ensure that funds are in place to carry out the closure plan.

What steps does IAMGOLD take to protect the environment?

As a mining company, we are aware that our activities have an environmental impact. Our job is to challenge ourselves constantly to minimize, eliminate and offset those impacts whenever possible. We do this by:

- Working within rigorous environmental frameworks: internal (IAMGOLD's Sustainability Standard) and external (Towards Sustainable Mining);
- Financially supporting environmental protection through environmental monitoring, employing environmentally-conscious people and properly managing our tailings and waste;
- Complying with all environmental regulatory requirements and permits; and
- Minimizing risk through emergency response and crisis management planning.

The area in which the Côté Gold Project is situated has experienced exploration and mining since the early 1900s. We will develop the Project in a manner which limits the impact on the natural environment to the fullest extent possible. The EA outlined mitigation measures

that will be taken to avoid, minimize, or manage potential negative effects. In addition to the commitments made during the EA process, we are incorporating the conditions of the EA approval into the site design. To view the EA decisions, please follow the links below:

- Federal EA decision: <http://www.ceaa.gc.ca/050/details-eng.cfm?evaluation=80036>
- Provincial EA decision: <https://www.ontario.ca/page/approval-Côté-gold-project-environmental-assessment>

How will the Project affect lakes and streams?

The Project's development will result in Côté Lake being relocated because the main gold deposit is located beneath Côté Lake. IAMGOLD is committed to constructing a new lake as part of the development so that no fish habitat is lost.

Sections of other water bodies and watercourses are proposed to be realigned to allow for the development and operation of the Project facilities. At the start-up of operations, the Project will require water to supply Project

processes and activities. Water used during operations following start-up will rely on recycling as much as possible to minimize intake of water from the area.

IAMGOLD will meet all federal and provincial conditions related to water management activities.

Would I still be able to use this area for hunting, fishing or other recreation activities?

For safety reasons, during the construction, operation, and closure of the Côté Gold Project, the Project site will be inaccessible to the general public. The area surrounding the Project site, unless specified and excluded for safety reasons, will remain accessible for hunting, fishing and other recreational activities.



For more information please contact us: cotegold@iamgold.com

Join our Project mailing list to be kept informed about the Project and any upcoming events by sending an email to: cotegold@iamgold.com

The map illustrates the Côté site and its surrounding environment, including various lakes and subwatersheds. Key features and proposed changes are highlighted with callouts:

- Previous discharge location:** Indicated by a black arrow pointing to a location near the top of the map.
- Cross-Country 230 kV transmission line segment from Côté site to Timmins no longer required:** Indicated by a black arrow pointing to a line segment near the top right.
- New 115 kV transmission line from Côté site to Shining Tree Distribution Station:** Indicated by a black arrow pointing to a line segment on the right side.
- Smaller Tailing Management Facility and new location resulting in simpler channel realignments:** Indicated by a black arrow pointing to a new, smaller facility location.
- New discharge location:** Indicated by a black arrow pointing to a new location near the center of the map.
- Smaller Mine Rock Area:** Indicated by a black arrow pointing to a new, smaller area near the bottom right.
- New lake to offset loss of Côté Lake habitat:** Indicated by a black arrow pointing to a new lake location near the bottom center.

The map also shows the following locations and features:

- Lakes:** Wall Lake, Unnamed Lake #2, Unnamed Lake #1, Polishing Pond, Mesomikenda Lake, Mollie River Subwatershed, Moore Lake, Chain Lake, Alton Lake, Shapton Lake, George Lake, and others.
- Facilities:** Tailing Management Facility, Process Plant, Ore Stockpile, Open Pit, and others.
- Infrastructure:** Main Access Road, Three Duck Lakes (Lower), and others.



CÔTÉ GOLD

Côte Gold

Côte Gold is a joint venture project between IAMGOLD Corporation and Japanese conglomerate, Sumitomo Metal Mining Co., Ltd.

This joint venture highlights the value and importance of the project as this is Sumitomo's first investment in Canada in over 50 years.

\$9 BILLION
in economic activity
during the mine's operations

\$3.9 BILLION
in wages
through direct and indirect job creation

**400-500 full time good
paying jobs during
operations and
over 1000
construction jobs**



IAMGOLD is committed to responsibly developing the Côte Gold Project and will develop and implement environmental and socio-economic management plans and monitoring programs.

For more information, please contact us at cotegold@iamgold.com or

Dave Brown, Manager of Environment and Community Relations
david_brown@iamgold.com

Christian Naponse, Coordinator Community Affairs
christian_naponse@iamgold.com



PROJECT TIMELINE

construction
2.5 years

2019

2021



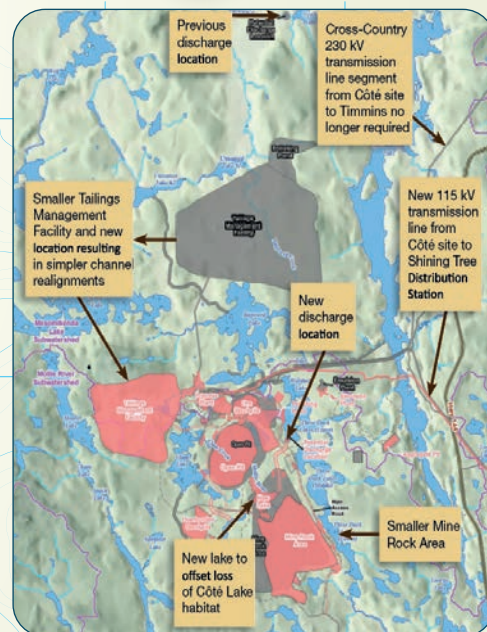
operation
17 years +

2021

2038



initial closure
2 years
2039
2040



■ Project layout assessed during the environmental assessment
■ Optimized Project layout

IAMGOLD will be **working closely with Indigenous and Northern communities** to build and operate the project.