

# **Appendix B**

## **Open House Presentations and Comment Forms**



**IAMGOLD<sup>®</sup>**  
CORPORATION



# **The Côté Gold Project – Project Update February 2018**

---

# Côté Gold Project Update

- **Côté Gold Project Update**
  - › **Project Overview**
  - › **Environmental Assessment Approvals**
  - › **Project News**
  - › **Project Optimizations**
  - › **Environmental Effects Review**
  - › **Project Timeline**
  - › **Mine Closure**
  - › **Ongoing Communication and Consultation**

# The Côté Gold Project

## ■ Project overview

- › Located in Neville and Chester Townships
- › 20 km southwest of Gogama; 130 km southwest of Timmins; 200 km northwest of Sudbury
- › Open pit gold Project
- › Operate for 17 years
- › Process 36,000 tonnes per day
- › Employ ~1,000-1,200 during construction
- › Employ ~400-500 during operations

## ■ Governed by Zero Harm Framework



### Typical haul truck and Open pit



Rio Tinto, Palabora Open Pit



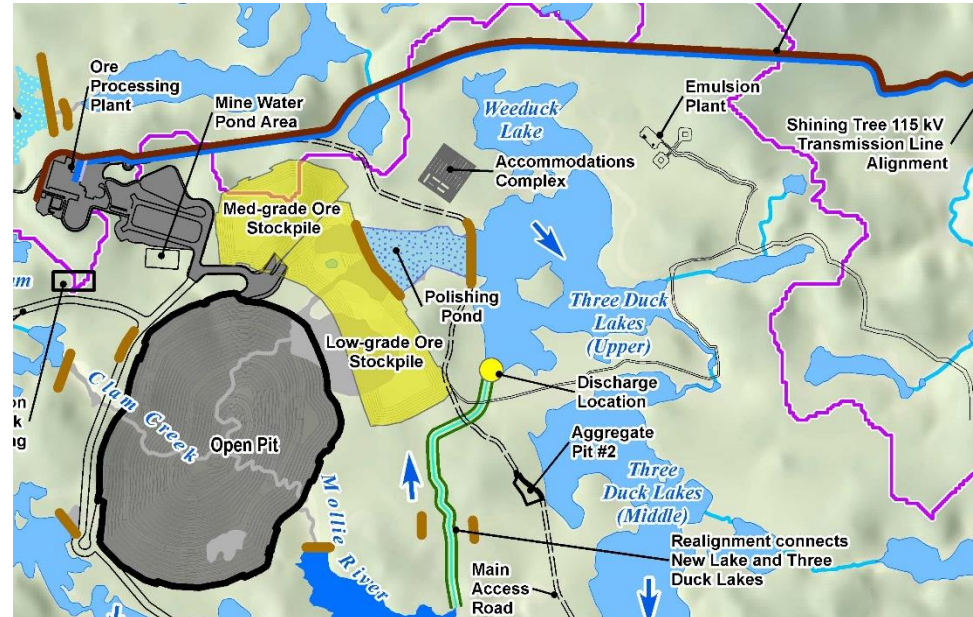
Rio Tinto, Palabora Open Pit



# Ore Processing Plant, Work Camp and Other Buildings

## Accommodations Complex

1,200 workers during construction  
500 full-time personnel during operation



## Ore Processing Plant

Area where gold is recovered from mined rock (ore)



Source for all images: Detour Gold

# Environmental Assessment Approvals

## ■ Canadian Environmental Assessment Agency approval

- › Approved April 13, 2016
- › Approximately 90 conditions / commitments

## ■ Ministry of the Environment and Climate Change approval

- › Approved December 22, 2016
- › Approximately 95 conditions / commitments

ENVIRONMENTAL ASSESSMENT ACT  
SECTION 9  
NOTICE OF APPROVAL TO PROCEED WITH THE UNDERTAKING  
(AND ORDER UNDER SUBSECTION 12.4(3))

RE: An Environmental Assessment for the Côté Gold Project.

Proponent: IAMGOLD Corporation

EA File No.: EA 05-09-02

EAIMS File No.: 13022

TAKE NOTICE that the period for requesting that the application or matters related to the application be referred to the Environmental Review Tribunal for a hearing and decision, provided for in the Notice of Completion of the Ministry Review for the above noted Environmental Assessment, expired on April 29, 2016.

I received no submissions under Subsection 7.2 (3) of the Environmental Assessment Act requesting that the application or matters that relate to the application be referred to the Environmental Review Tribunal for a hearing and decision. I therefore consider referring the application or matters that relate to the application to the Tribunal to be unnecessary.

Having considered the matters, as set forth under Subsection 9(2) of the Environmental Assessment Act, that should be considered when making a decision under Subsection 9 of the Act, I hereby give approval to proceed with the Undertaking subject to the conditions set out below.

Decision Statement  
Issued under Section 54 of the Canadian Environmental Assessment Act, 2012

to  
IAMGOLD Corporation  
c/o Stephen J.J. Letwin, President and Chief Executive Officer

401 Bay Street, Suite 3200  
Toronto, Ontario  
M5H 2H4

for the  
Côté Gold Mine Project

Description of the Designated Project

IAMGOLD Corporation is proposing the construction, operation and decommissioning of the Côté Gold Mine Project, which includes an open-pit gold mine, an on-site metal mill and four structures for diverting water, located 20 kilometres southwest of the community of Cogema in northeastern Ontario. The Designated Project would have an ore input and ore production capacity of 60,000 tonnes per day, with a life of approximately 15 years. The four water course realignment structures would have the capacity to divert 14 271 500, 15 695 800, 17 991 500 and 13 286 000 cubic metres of water per year.

Conduct of the environmental assessment

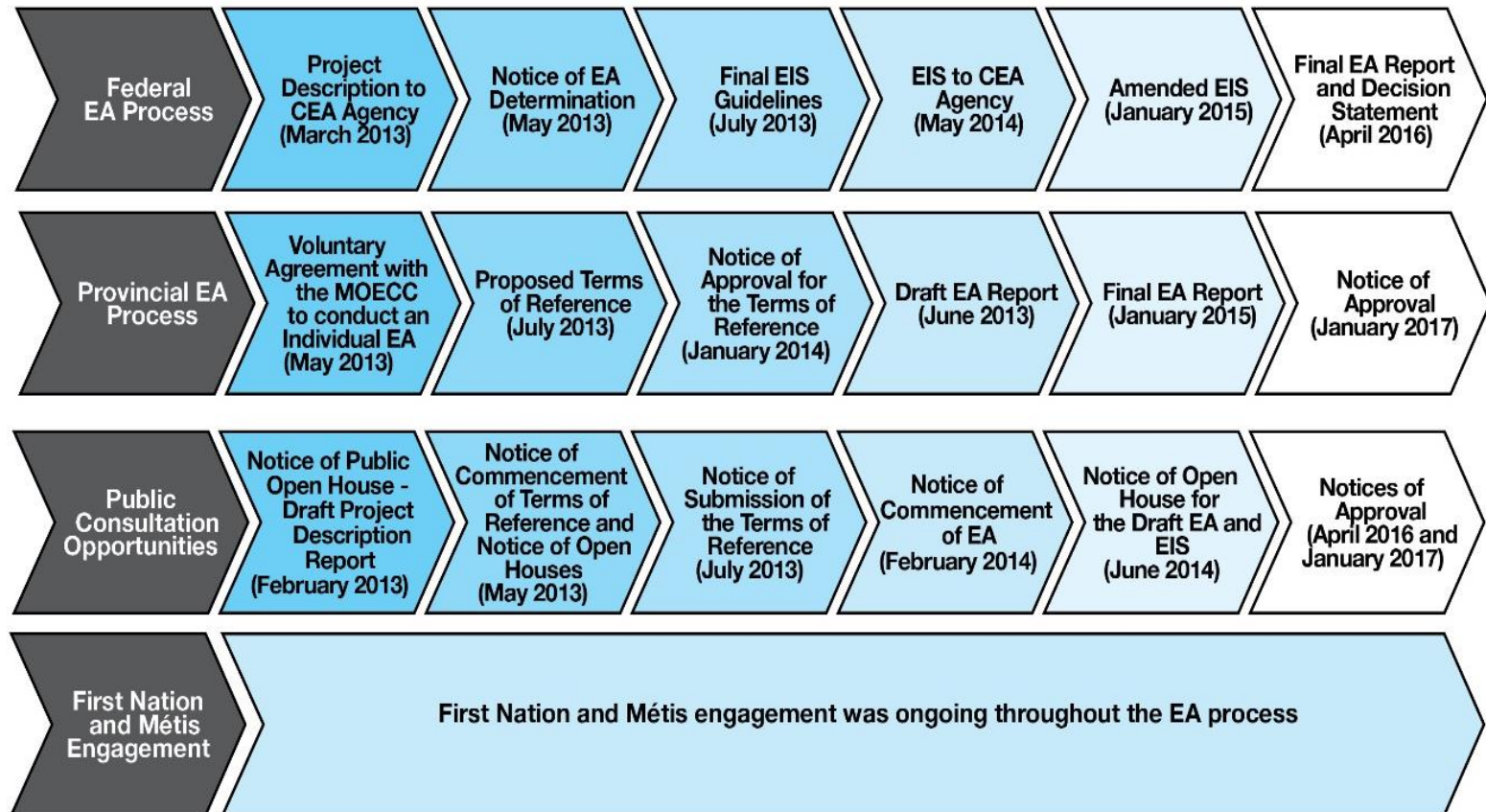
The Canadian Environmental Assessment Agency (the Agency) conducted an environmental assessment of the Designated Project in accordance with the requirements of the Canadian Environmental Assessment Act, 2012. The Agency commenced the environmental assessment on May 13, 2019 and submitted its report to me in my capacity as Minister of Environment and Climate Change.

Decision on environmental effects referred to in subsection 5(1) of the Canadian Environmental Assessment Act, 2012

In accordance with paragraph 52(1)(a) of the Canadian Environmental Assessment Act, 2012, after considering the report of the Agency on the Designated Project and the implementation of mitigation measures that I consider appropriate, I have determined that the Designated Project is not likely to cause significant adverse environmental effects referred to in subsection 5(1) of the Canadian Environmental Assessment Act, 2012.

In accordance with subsection 53(1) of the Canadian Environmental Assessment Act, 2012, I have established the conditions below in relation to the environmental effects referred to in subsection 5(1) of the Canadian Environmental Assessment Act, 2012, with which the Proponent must comply.

# Successful Completion of the Côté Gold Project Environmental Assessment Process





# Côté Gold Project News

## IAMGOLD buys Sanatana's Resources Interest in Claims – January 2016

### 2018 Viola R. MacMillan Award

This award, named in honour of PDAC's longest serving president, is given to an individual or organization demonstrating leadership in management and financing for the exploration and development of mineral resources.



SUMITOMO METAL MINING

#### IAMGOLD Corporation and Sumitomo Metal Mining Co., Ltd. For demonstrating leadership in the financing and management of one of Canada's largest undeveloped gold projects

In June 2017 Sumitomo Metal Mining purchased a 30% interest in the Côté Gold project in northeastern Ontario from IAMGOLD for US\$195 million. The investment and subsequent 70-30 joint venture agreement was a breakthrough, allowing IAMGOLD to proceed toward development of a major gold project in a challenging financing environment. Côté Gold would be the first new major open pit gold mine developed in northern Ontario in over five years and is expected to produce an average of 320,000 ounces of gold per year over a 17-year life span when it enters production in 2021.

The initial development proposal for Côté Gold came at a time when gold prices were declining. By envisioning a smaller project and reconfiguring the proposed surface facilities, IAMGOLD was able to halve the capital cost to just over US\$1 billion and produce a much more compelling preliminary economic assessment (PEA). The company also secured environmental approval from both provincial and federal ministries. Combined with a strengthening gold price environment, these achievements paved the way for joint venture discussions between IAMGOLD and Sumitomo.

A subsequent preliminary feasibility study (PFS) sealed the strategic partnership by confirming Côté Gold's potential. With proven and probable reserves of 5.9 million ounces, the project has an after-tax net asset value of US\$703 million, an internal rate of return of 14% and a payback period of 4.5 years. In an industry challenged by reserve replacement, the mine will become one of IAMGOLD's most productive assets and boost Sumitomo's annual gold output to nearly 18 tonnes from 15 tonnes.

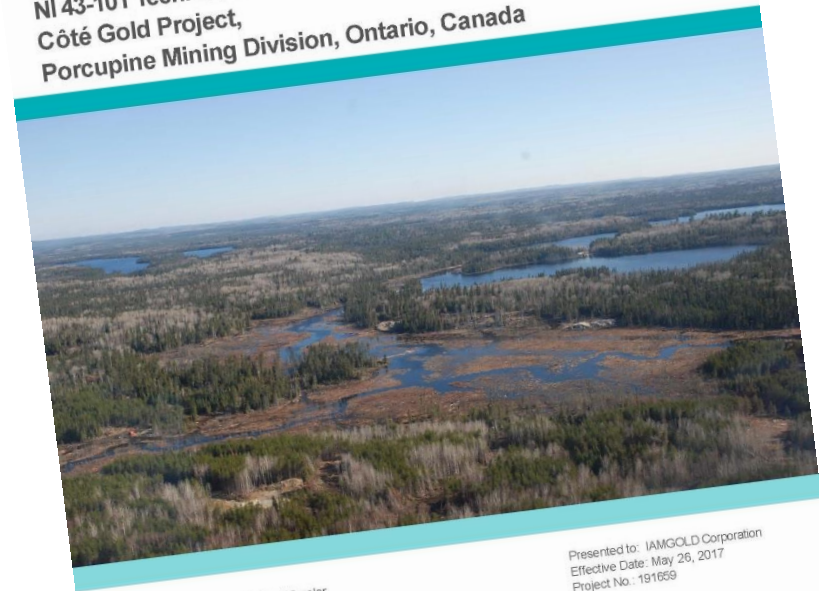
Côté Gold will benefit northeastern Ontario, a region suffering declines in both population and employment, and Canada as a whole. The project offers an estimated 19 years of employment through construction, operation and closure and will procure hundreds of millions worth of goods and services during the construction and operation phases. Federal and provincial revenues are expected to total more than \$1 billion through direct and indirect economic activity. Engagement with surrounding Indigenous communities continues.

The joint venture is a success story because it mitigates the risk of the Côté Gold project by giving IAMGOLD access to Sumitomo's considerable financial resources and mine building and operating expertise. Together, the two companies are confident they can begin construction as early as 2019 and achieve commercial production by 2021 while ensuring a net positive impact on local and regional communities.

IAMGOLD  
CORPORATION



#### NI 43-101 Technical Report on the Prefeasibility Study of the Côté Gold Project, Porcupine Mining Division, Ontario, Canada



Presented to: IAMGOLD Corporation  
Effective Date: May 28, 2017  
Project No.: 191659

A. Peralta, P. Eng., Amec Foster Wheeler  
B. Wang, P. Eng., Amec Foster Wheeler  
D. Dyck, P. Eng., Amec Foster Wheeler  
D. Smiley, P. Eng., Amec Foster Wheeler  
I. Lipiec, P. Eng., Amec Foster Wheeler  
J. Padilla, P. Eng., Amec Foster Wheeler  
P. Baluch, P. Eng., IAMGOLD Corp.  
A. Smith, P. Geo., IAMGOLD Corp.  
M. Bugnon, P. Geo., RPA Inc.  
L. Evans, P. Eng., RPA Inc.  
T. Ciuculescu, P. Geo., RPA Inc.



# Project Optimizations

## ■ Considered feedback received during environmental assessment

- › Local communities
- › First Nations and Métis
- › Technical experts
- › Government regulators

## ■ Pre-feasibility study assessed different options to improve environmental performance



# Overview of Key Optimizations and Responses to Concerns

## Issues and Concerns Raised during the EA Process

- Increased access for hunting and use of new transmission line right-of-way
- Potential effects on wildlife

## How the Optimized Project Layout Addresses Issues and Concerns

Use of existing transmission line alignment and infrastructure (Shining Tree)

- Visual and noise effects of Tailings Management Facility (TMF) from Mesomikenda Lake
- Watercourse realignments (number and length)
- Overall Project footprint

New location for Tailings Management Facility (TMF)

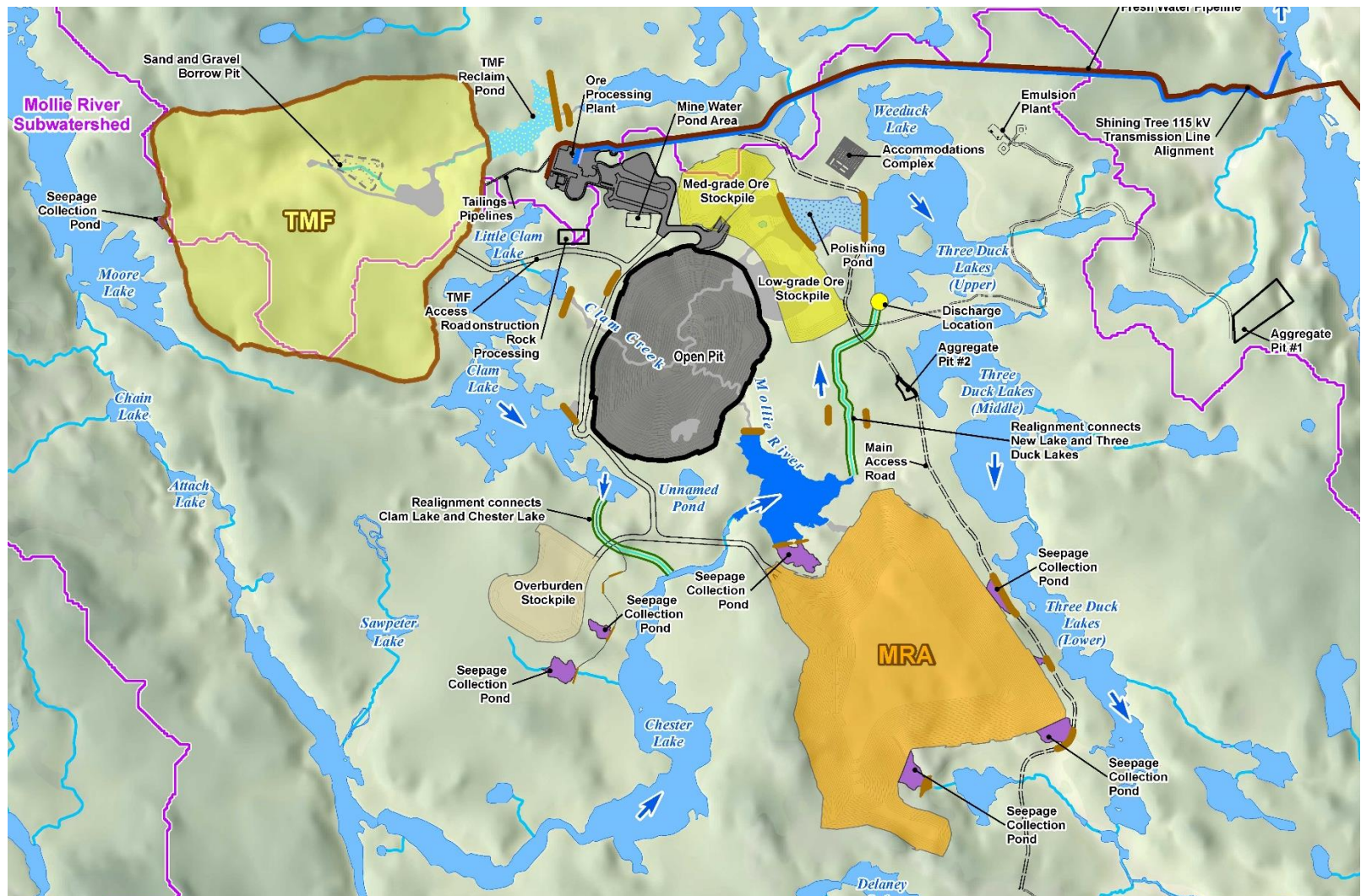
- Loss of habitat from draining Côté Lake
- Surface water loss

Creation of a new lake

- Project footprint

Smaller Project footprint

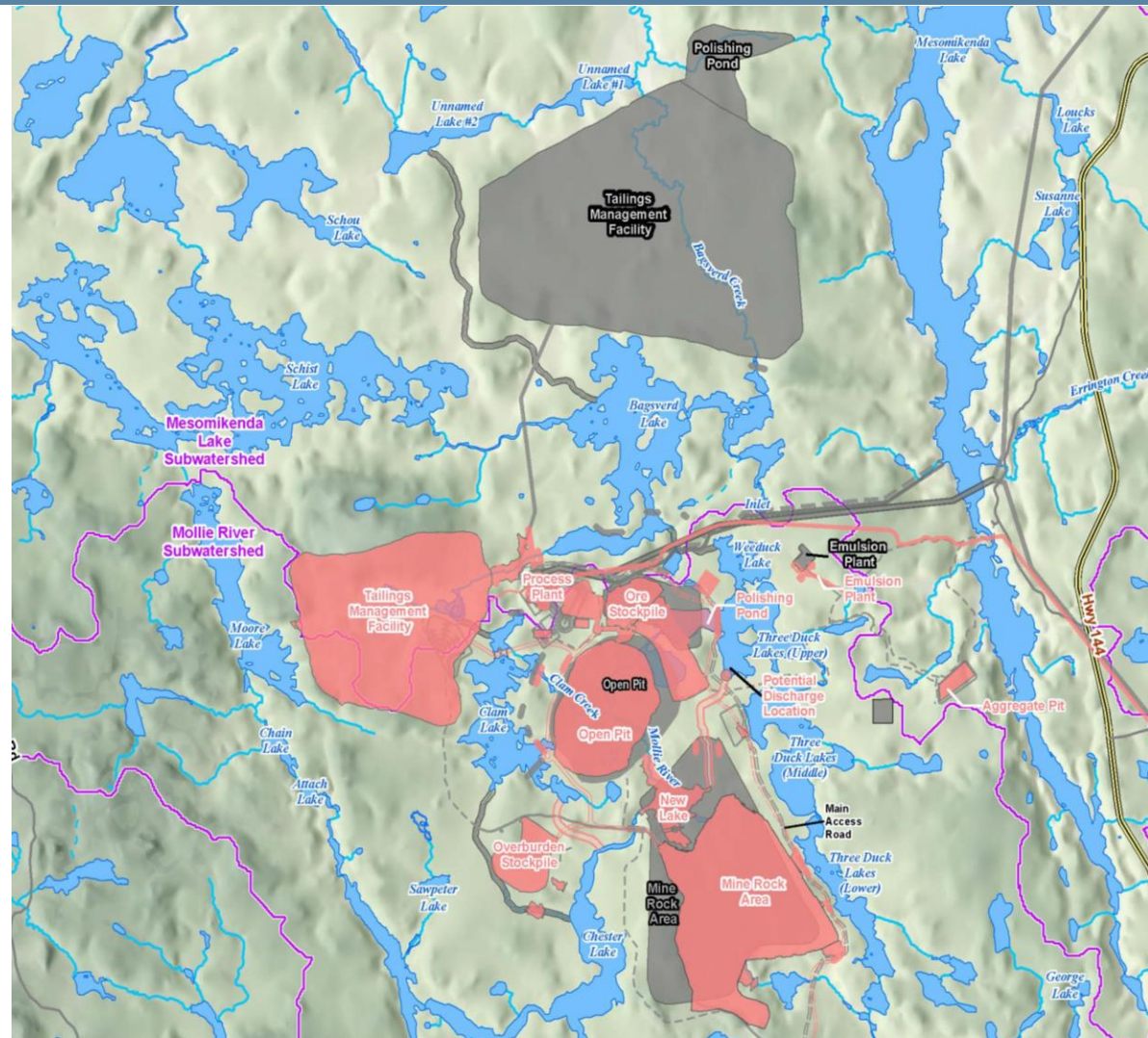
# New Côté Gold Project Layout





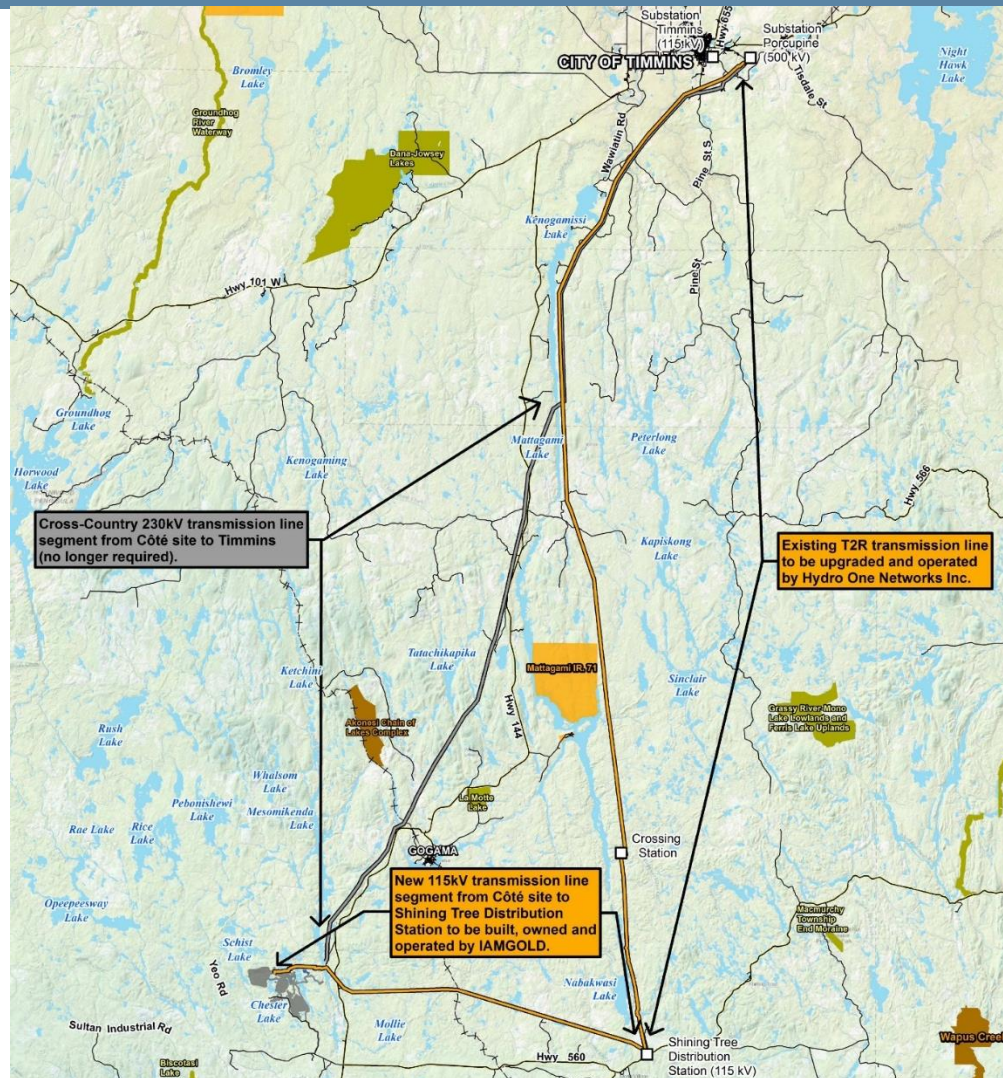
# Côté Gold Project Layout – Comparison of Old and New Layouts

- Grey shaded areas represent show the Project layout assessed during the environmental assessment
- The pink shaded areas represent the optimized Project layout





# Transmission Line Alignment



# Overview of Key Optimizations

Component	Previous Project Design (EA)	Current (EER)
Footprint	1,700 hectares (ha)	1,050 ha
Life of Mine	15 years	17 years
Open Pit		
Footprint	210 ha	145 ha
Mining Rate	60,000 tonnes per day (tpd)	36,000 tpd
Ore	261 million tonnes (Mt)	196 Mt
Mine Rock Area		
Footprint	400 ha	300 ha
Quantity	850 Mt	559 Mt
Tailings Management Facility (TMF)		
Location	North of open pit (overprinting portions of Bagsverd Creek)	Northwest of open pit
Footprint	840 ha	478 ha
Storage Capacity	261 Mt	200 Mt
Maximum Dam Height	45 metres (m)	70 m
Water Discharge Location	Bagsverd Creek	Three Duck Lakes (Upper)
Camp Location	Northwest of Open Pit	Between Three Duck Lakes and Bagsverd Lake
Overburden Stockpile	Integrated in Mine Rock Area	Southwest of Open Pit
Watercourse Realignments	7.9 km (7 realignments)	2.4 km (2 realignments)
Transmission Line Alignment	230 kilovolt (kV) Cross Country Alignment from Timmins (approximately 120 km)	Existing Hydro One Line from Timmins to Shining Tree and 115 kV transmission line alignment from Shining Tree (44 km)

# Environmental Effects Review (EER)

## ■ Purpose of the EER is to demonstrate:

- › The optimized Project has similar or reduced potential for environmental effects
- › The net impact significance conclusions from the environmental assessment are still valid

## ■ The EER will compare the previous and new Project layouts, considering:

- › Effects
- › Significance
- › Mitigation
- › Monitoring

# Environmental Effects Review (EER) Report

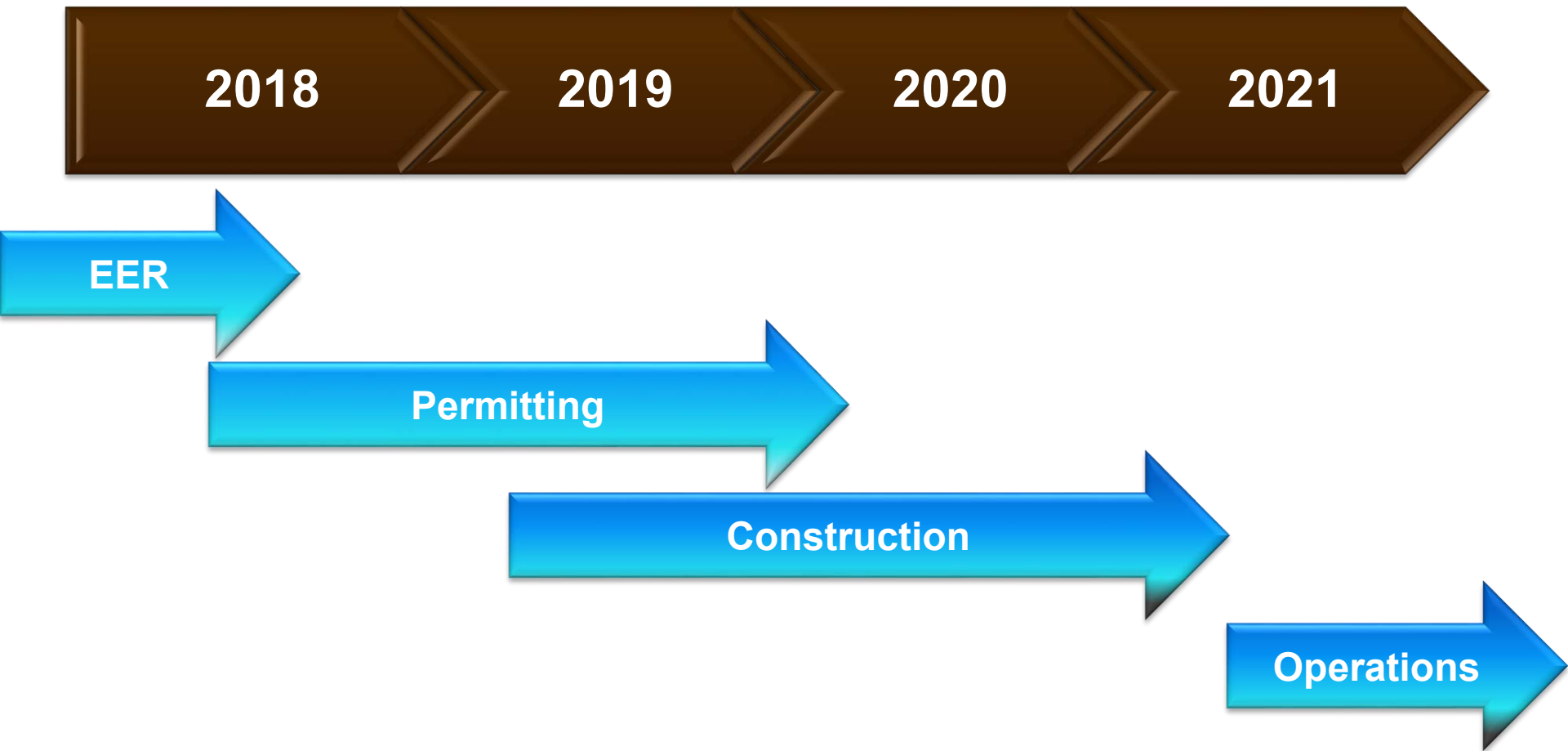
## ■ The EER Report will:

- › Update description of Project effects
- › Compare effects changes of the optimized Project
- › Include changed or updated mitigation
- › Include changed or updated environmental management
- › Provide information about consultation
  - › Key issues raised by stakeholders and Indigenous Groups
  - › Information about how issues have been addressed by the Optimized Project

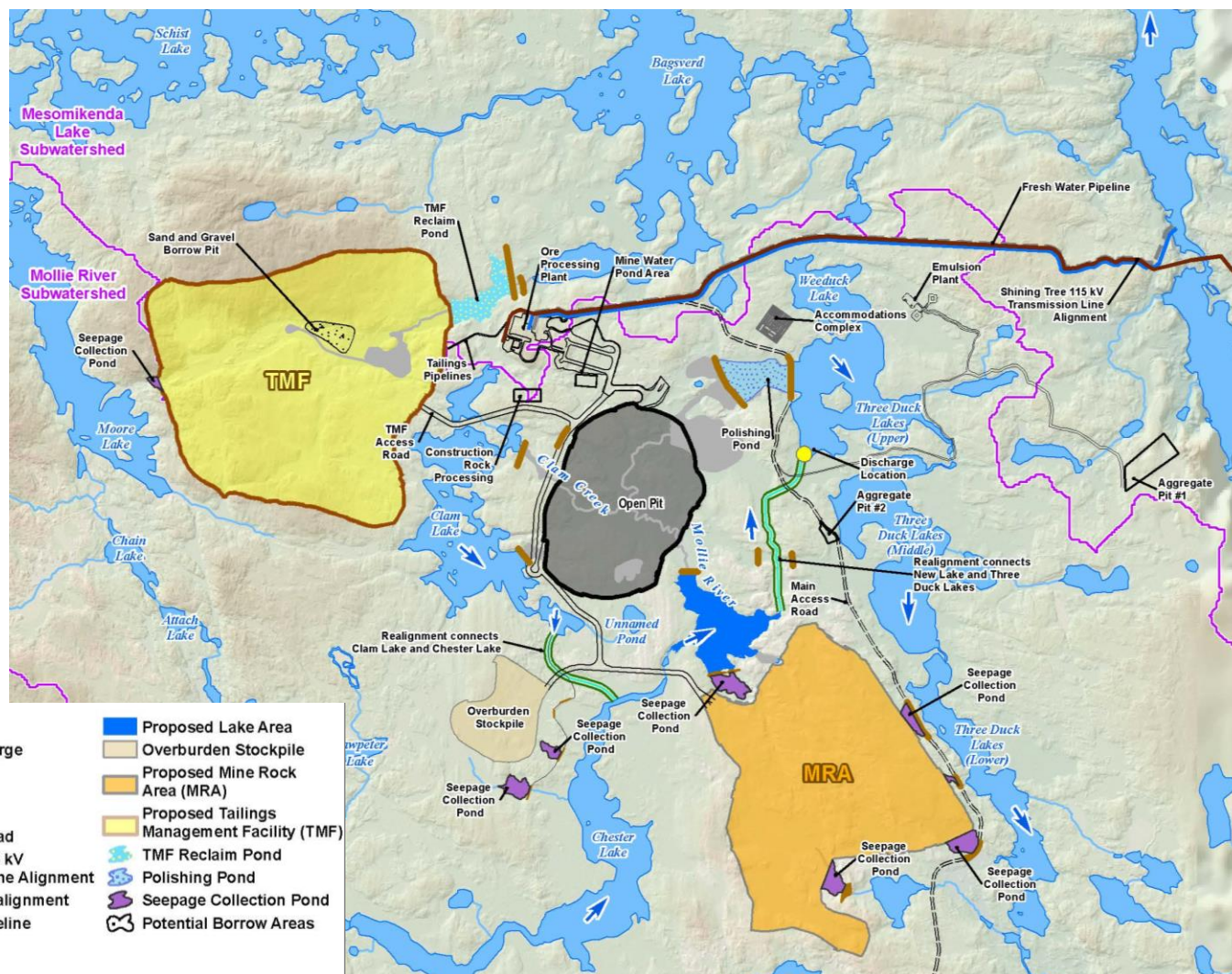
## ■ The EER Report will be submitted to the federal and provincial governments and will be shared publicly



# Project Timeline

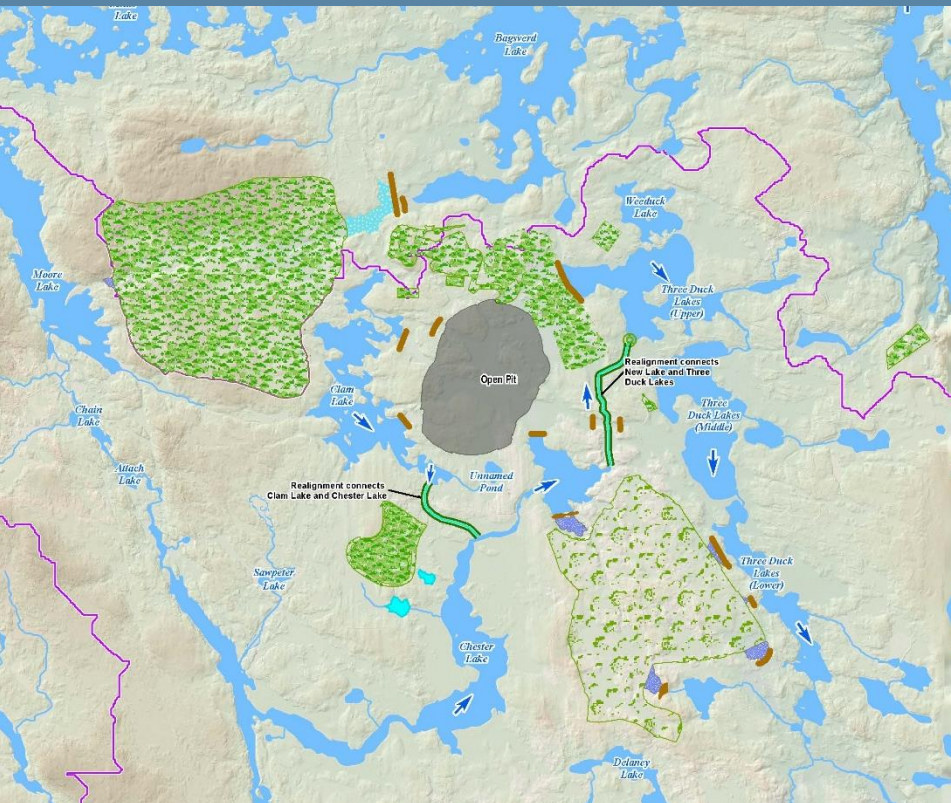


# Côté Gold Project at End of Operations





# Côté Gold Project – Post Closure Phases 1 and 2

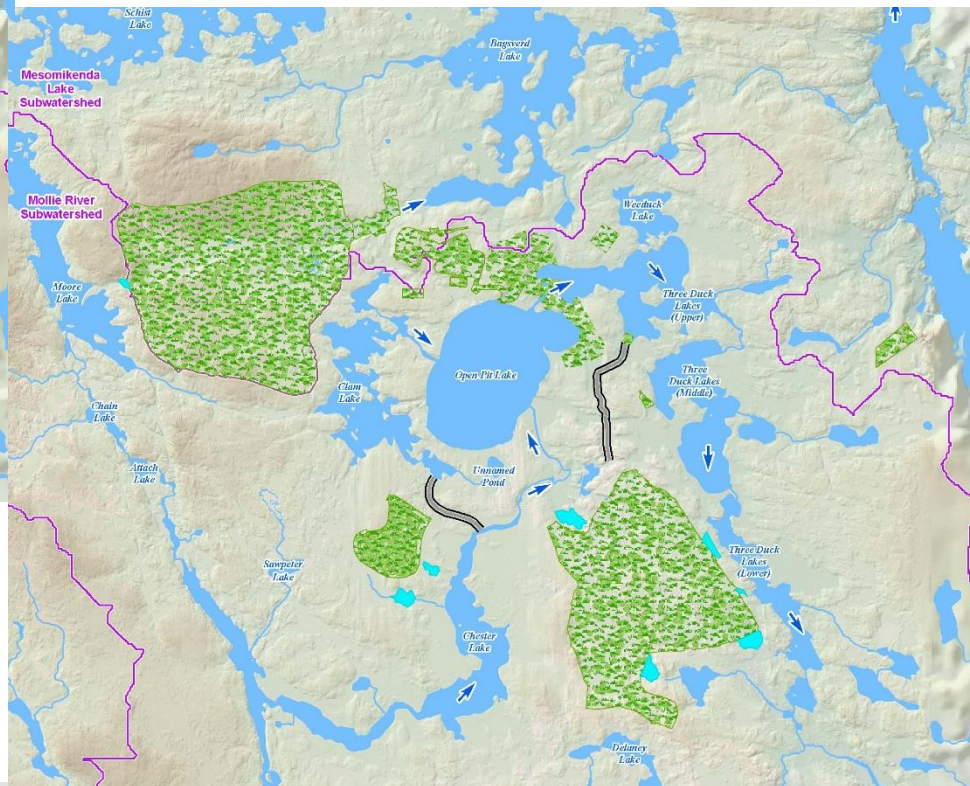


**Phase 1**

## LEGEND

-  Proposed Water Flow Direction
-  Decommissioned Realignments
-  Rehabilitated Ponds
-  Revegetated Area
-  Subwatershed Boundary
-  Watercourses
-  Waterbodies
-  Wooded Area

**Phase 2**



# Ongoing Communication and Consultation

## ■ IAMGOLD will:

- › Hold open houses and community meetings
- › Engage with the public, First Nations, Métis and government agencies regarding the proposed changes to the Project and our EER findings
- › Engage with the public, First Nations, Métis and government agencies about mine closure planning and environmental permit applications

**We invite you to come and learn about the Project, provide your feedback, ask questions and get involved!**

**For more information please contact us: [cotegold@iamgold.com](mailto:cotegold@iamgold.com)**



# May / June 2018 Open House Presentation



**IAMGOLD**<sup>®</sup>  
CORPORATION



## Côté Gold Project

---

# Côté Gold Project Update

- **Côté Gold Project Update**
- **Environmental Effects Review**
- **Transmission Line Environmental Assessment**
- **Management of Mine Waste**
- **Mine Closure**
- **Fish Habitat Plans**
- **Archaeological Studies and Findings**
- **Ongoing Communication and Consultation**

# The Côté Gold Project

## ■ Project overview

- › Located in Chester and Yeo Townships
- › 20 km southwest of Gogama; 130 km southwest of Timmins; 200 km northwest of Sudbury
- › Open pit gold Project
- › Operate for 17 years
- › Process 36,000 tonnes per day
- › Employ ~1,000-1,200 during construction
- › Employ ~400-500 during operations

## ■ Governed by Zero Harm Framework



## Typical haul truck and Open pit



Rio Tinto, Palabora Open Pit

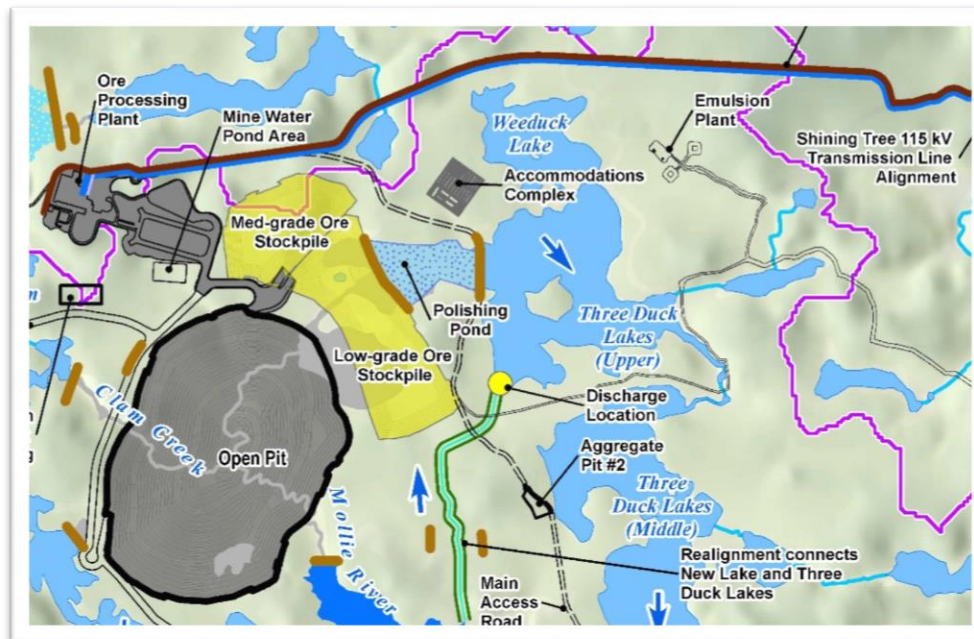
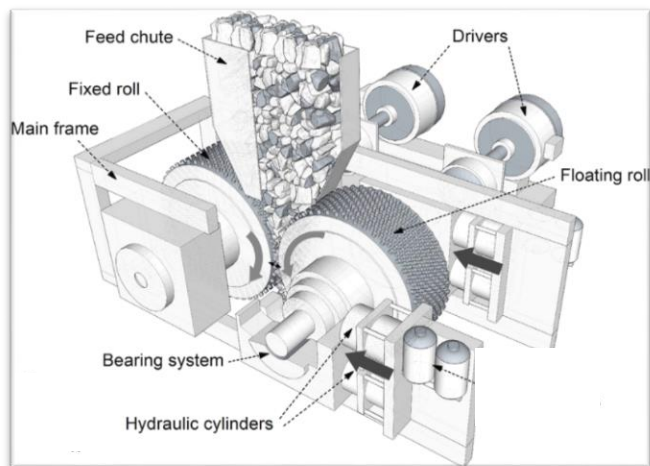


Rio Tinto, Palabora Open Pit



# Ore Processing Plant, Work Camp and Other Buildings

## Ore Processing High Pressure Grinding Rolls (HPGR)



## Accommodations Complex

1,200 workers during construction  
500 full-time personnel during operation



Source for image: Detour Gold

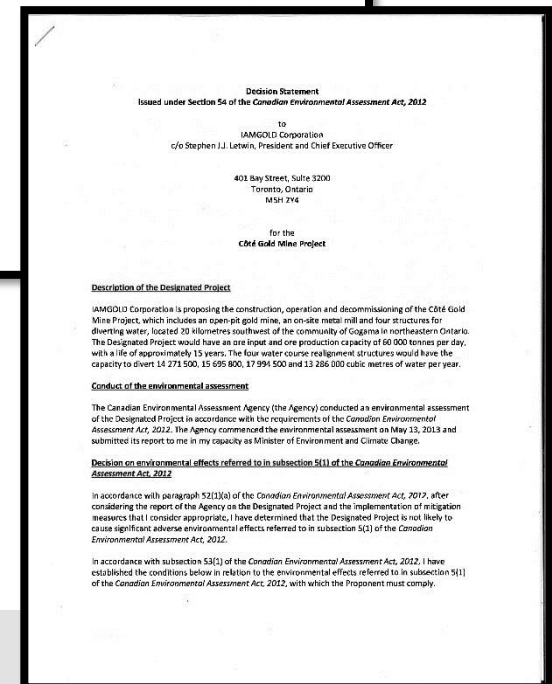
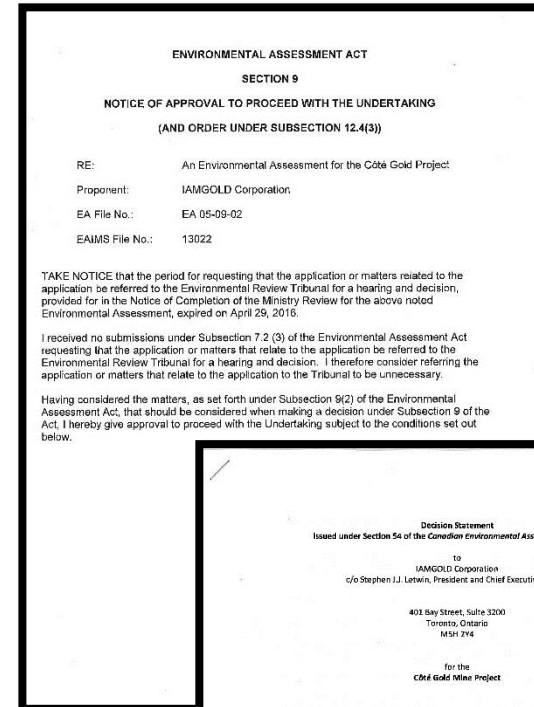
# Environmental Assessment Approvals

## ■ Canadian Environmental Assessment Agency approval

- › Approved April 13, 2016
- › Approximately 90 conditions / commitments
  - › Follow-up program to verify accuracy of EA predictions and effectiveness of mitigation measures

## ■ Ministry of the Environment and Climate Change approval

- › Approved December 22, 2016
- › Approximately 95 conditions / commitments
  - › Aboriginal Consultation Plan
  - › Community Communication Plan
  - › Monitoring plan for terrestrial systems and habitat





# Côté Gold Project News

## IAMGOLD buys Sanatana's Resources Interest in Claims – January 2016

### 2018 Viola R. MacMillan Award

This award, named in honour of PDAC's longest serving president, is given to an individual or organization demonstrating leadership in management and financing for the exploration and development of mineral resources.



**IAMGOLD Corporation and Sumitomo Metal Mining Co., Ltd.**  
For demonstrating leadership in the financing and management of one of Canada's largest undeveloped gold projects

In June 2017 Sumitomo Metal Mining purchased a 30% interest in the Côté Gold project in northeastern Ontario from IAMGOLD for US\$195 million. The investment and subsequent 70-30 joint venture agreement was a breakthrough, allowing IAMGOLD to proceed toward development of a major gold project in a challenging financing environment. Côté Gold would be the first new major open pit gold mine developed in northern Ontario in over five years and is expected to produce an average of 320,000 ounces of gold per year over a 17-year life span when it enters production in 2021.

The initial development proposal for Côté Gold came at a time when gold prices were declining. By envisioning a smaller project and reconfiguring the proposed surface facilities, IAMGOLD was able to halve the capital cost to just over US\$1 billion and produce a much more compelling preliminary economic assessment (PEA). The company also secured environmental approval from both provincial and federal ministries. Combined with a strengthening gold price environment, these achievements paved the way for joint venture discussions between IAMGOLD and Sumitomo.

A subsequent preliminary feasibility study (PFS) sealed the strategic partnership by confirming Côté Gold's potential. With proven and probable reserves of 5.9 million ounces, the project has an after-tax net asset value of US\$703 million, an internal rate of return of 14% and a payback period of 4.5 years. In an industry challenged by reserve replacement, the mine will become one of IAMGOLD's most productive assets and boost Sumitomo's annual gold output to nearly 18 tonnes from 15 tonnes.

Côté Gold will benefit northeastern Ontario, a region suffering declines in both population and employment, and Canada as a whole. The project offers an estimated 19 years of employment through construction, operation and closure and will procure hundreds of millions worth of goods and services during the construction and operation phases. Federal and provincial revenues are expected to total more than \$1 billion through direct and indirect economic activity. Engagement with surrounding Indigenous communities continues.

The joint venture is a success story because it mitigates the risk of the Côté Gold project by giving IAMGOLD access to Sumitomo's considerable financial resources and mine building and operating expertise. Together, the two companies are confident they can begin construction as early as 2019 and achieve commercial production by 2021 while ensuring a net positive impact on local and regional communities.



### NI 43-101 Technical Report on the Prefeasibility Study of the Côté Gold Project, Porcupine Mining Division, Ontario, Canada



Presented to: IAMGOLD Corporation  
Effective Date: May 28, 2017  
Project No.: 191659

A. Peralta, P. Eng., Amec Foster Wheeler  
B. Wang, P. Eng., Amec Foster Wheeler  
D. Dyck, P. Eng., Amec Foster Wheeler  
D. Smiley, P. Eng., Amec Foster Wheeler  
I. Lipiec, P. Eng., Amec Foster Wheeler  
J. Padilla, P. Eng., Amec Foster Wheeler  
P. Baluch, P. Eng., IAMGOLD Corp.  
A. Smith, P. Geo., IAMGOLD Corp.  
M. Bugnon, P. Geo., IAMGOLD Corp.  
L. Evans, P. Eng., RPA Inc.  
T. Ciuculescu, P. Geo., RPA Inc.

# Project Optimizations

- **Considered feedback received during environmental assessment**

- › First Nations
- › Métis
- › Local communities
- › Technical experts
- › Government regulators

- **Pre-feasibility study assessed different options to improve environmental performance**



# Overview of Key Optimizations and Responses to Concerns

## Issues and Concerns Raised during the EA Process

- Increased access for hunting and use of new transmission line right-of-way
- Potential effects on wildlife

## How the Optimized Project Layout Addresses Issues and Concerns

Use of existing transmission line alignment and infrastructure (Shining Tree)

- Visual and noise effects of Tailings Management Facility (TMF) from Mesomikenda Lake
- Watercourse realignments (number and length)
- Overall Project footprint

New location for Tailings Management Facility (TMF)

- Loss of habitat from draining Côté Lake
- Surface water loss

Creation of a new lake

- Project footprint

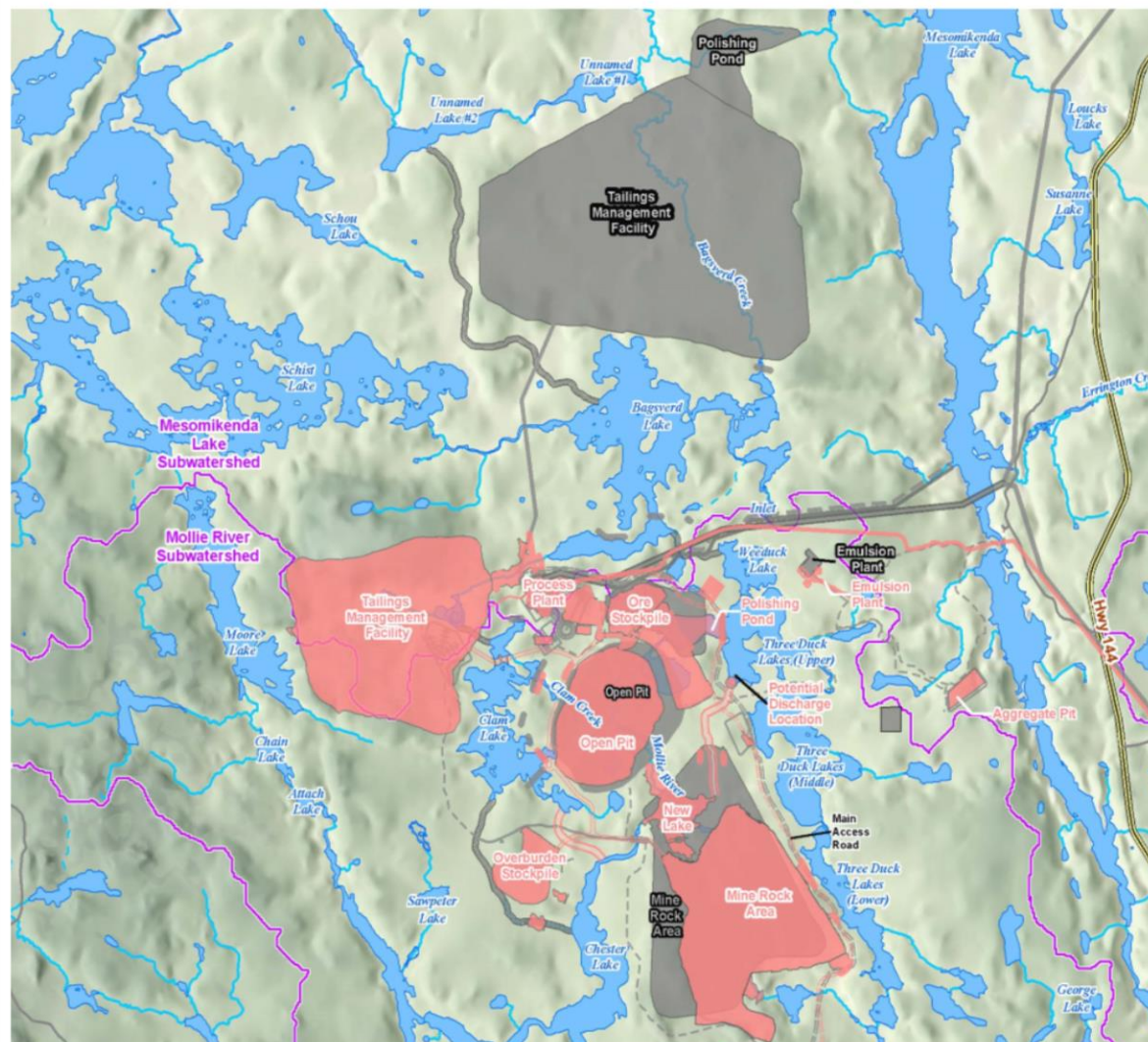
Smaller Project footprint



## Côte Gold Project Layout – Comparison of Old and New

## Project layout assessed during the environmental assessment

## Optimized Project layout



# Environmental Effects Review (EER)

## ■ The EER compares the previous and new Project layouts, considering

- › Effects
- › Significance
- › Mitigation
- › Monitoring

## ■ Technical reviews to date demonstrate

- › The optimized Project has the same or less potential for environmental effects
- › The significance conclusions from the environmental assessment are still valid

## ■ EER will

- › Consider comments from Indigenous communities and public
- › Be submitted to the federal and provincial governments

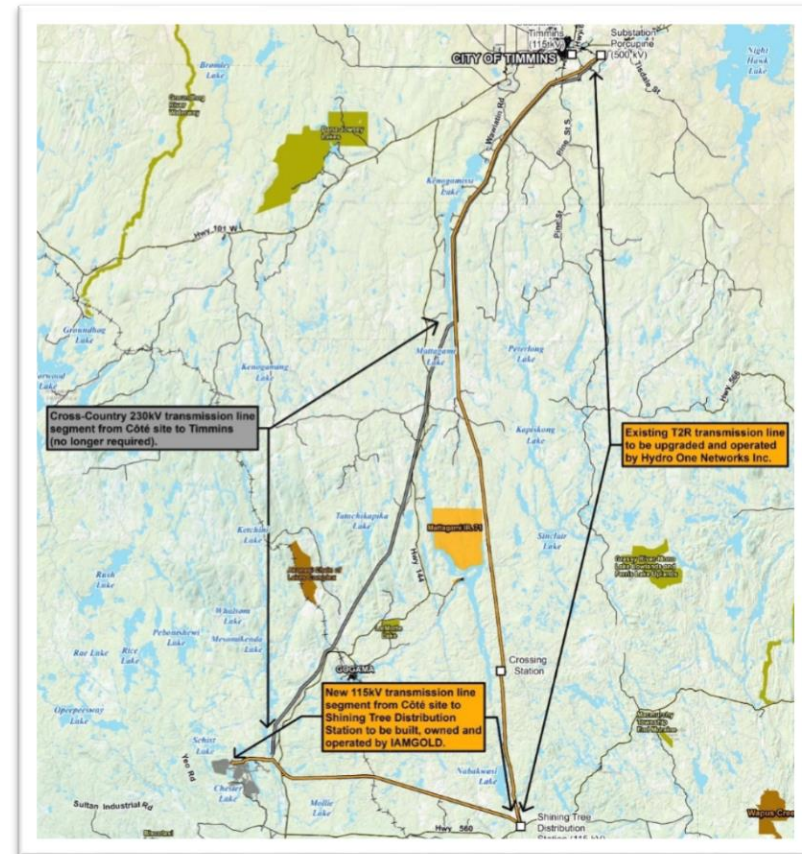
# Transmission Line Environmental Assessment

## ■ Required for new 115 kV transmission line

- › Project site to Shining Tree Distribution Station (44 km)
- › Will be owned and operated by IAMGOLD

## ■ Process

- › Requires a screening report
- › Consultation opportunities
  - › Today's open house
  - › 30 day review and comment period once screening report is filed





# Management of Mine Waste

## ■ Geography of the area

- › Tailings location
- › Mine rock location (stream and beaver pond)

## ■ Decision making process to look at options for where to locate tailings and mine rock

## ■ Review of options considered 4 aspects

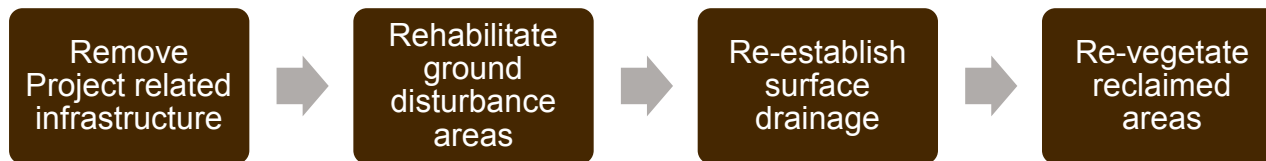
- › Environmental
- › Technical
- › Social
- › Economic (cost to Project)

**IAMGOLD invites community feedback on the aspects considered.**

\*Process to meet Mining Metal Effluent Regulations Schedule 2 Amendment

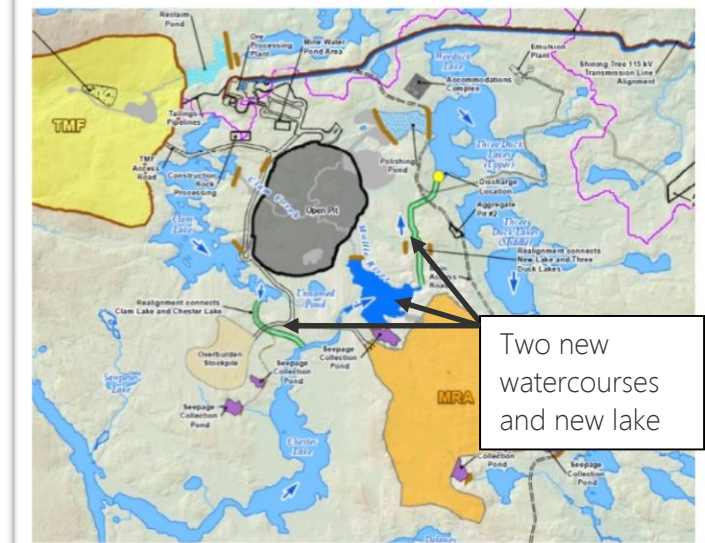
# Mine Closure

- Closure is guided by the *Mining Act* and the Mine Rehabilitation Code of Ontario
- An approved Closure Plan and financial assurance is required before mine construction and operations can begin
- Primary objectives of closure activities are to achieve biological, chemical and physical stability to support the following possible end land use
  - › Maintain and/or re-establish access for land users
  - › Promote vegetation communities that support biodiversity goals
  - › Promote the development of aquatic habitat that supports healthy fish populations
  - › Identify potential opportunities for site repurposing
- Key activities that will occur during closure include



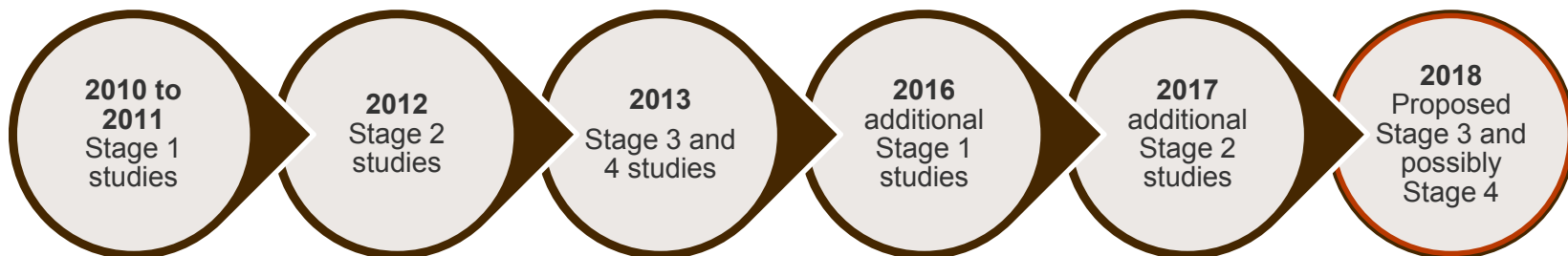
# Fish Habitat Plans

- **Optimized Project means less habitat loss**
- **2 watercourse realignments and a new lake will support fish, plants and animals within the ecosystem**
- **Fisheries offsetting plan**
  - › Detail proposed channel and lake designs
  - › Ways to support new fish habitat
- **At closure**
  - › Open pit will flood
  - › Original flow paths re-established





# Archaeological Studies

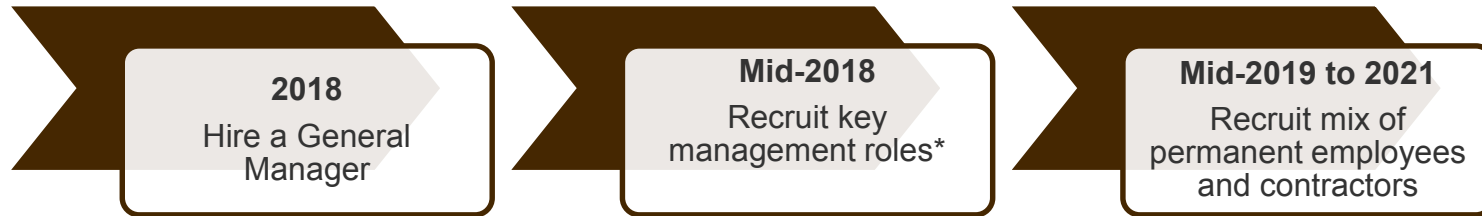


## ■ Presentation will highlight:

- › Pre-contact settlement of the area
- › Mining history on the property
- › Archaeological and cultural heritage artifacts found on the property



# Want to work for the Côté Gold Project?



- **Qualifications will be specific to positions**
- **Visit IAMGOLD Careers webpage: [www.iamgold.com/careers](http://www.iamgold.com/careers)**
  - › Register on the website to create a job alert to be notified of future roles that meet your skills and qualifications
  - › Apply online!

\* Key management roles include: Mining, Geology, Operations, Health & Safety

# Ongoing Communication and Consultation

**We invite you to come and learn about the Project, provide your feedback, ask questions and get involved!**

**For more information please contact us: [cotegold@iamgold.com](mailto:cotegold@iamgold.com)**



## **Dave Brown**

Manager of Environment and Community Relations, Côté Gold Project  
[david\\_brown@iamgold.com](mailto:david_brown@iamgold.com)

## **Christian Naponse**

Coordinator Community Affairs, Côté Gold Project  
[christian\\_naponse@iamgold.com](mailto:christian_naponse@iamgold.com)

## Project Optimization

### ■ Environmental Assessment (EA) approvals received in 2016

### ■ Since then, IAMGOLD

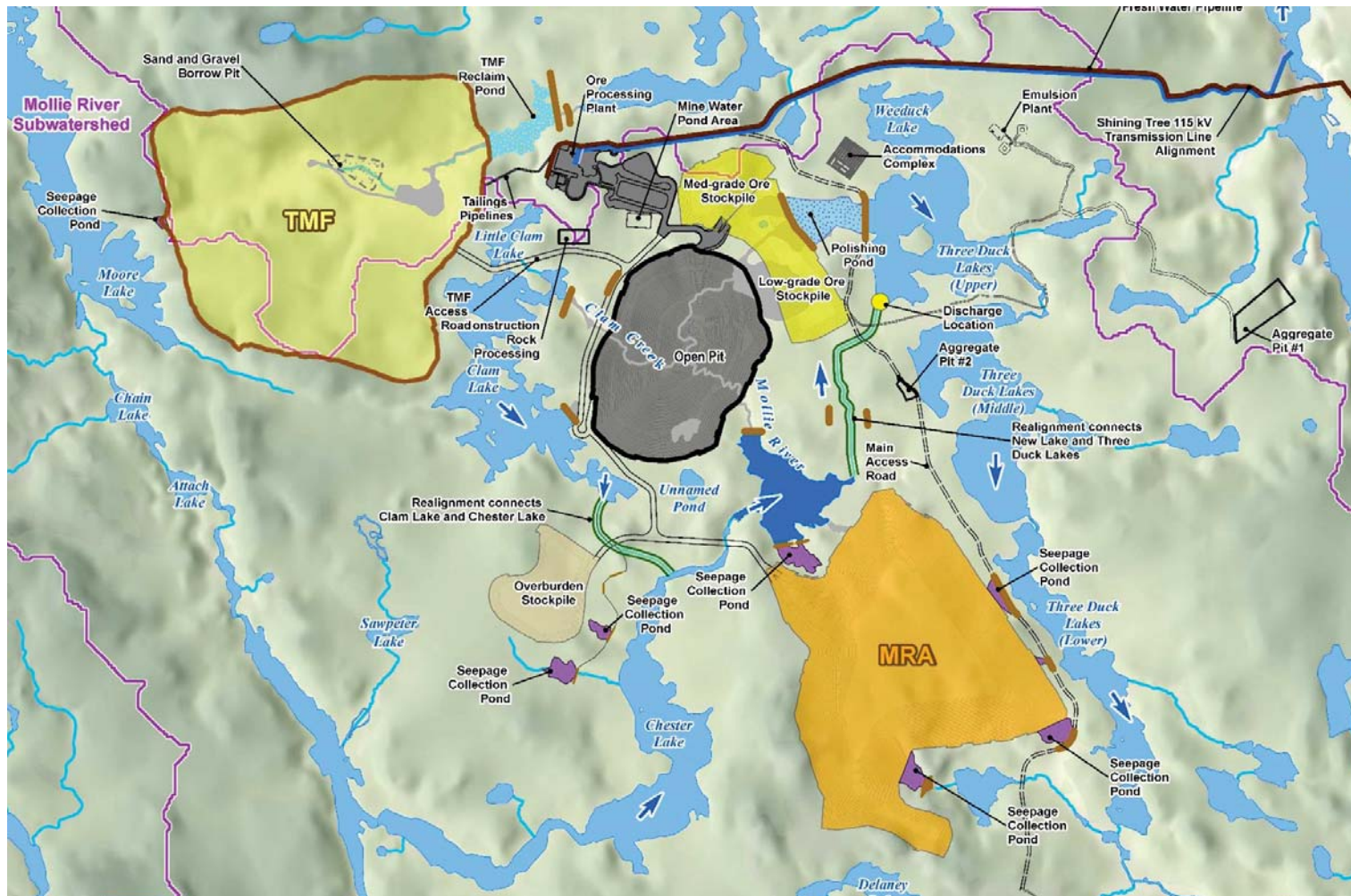
- › Considered feedback received during the EA process from First Nations and Métis, local communities, technical experts, government regulators
- › Conducted a pre-feasibility study that assessed different options to improve environmental performance

### ■ Result: Optimized Project Layout

- › Improved project economics and engineering
- › Improved socio-economic benefits
- › Reduced environmental effects

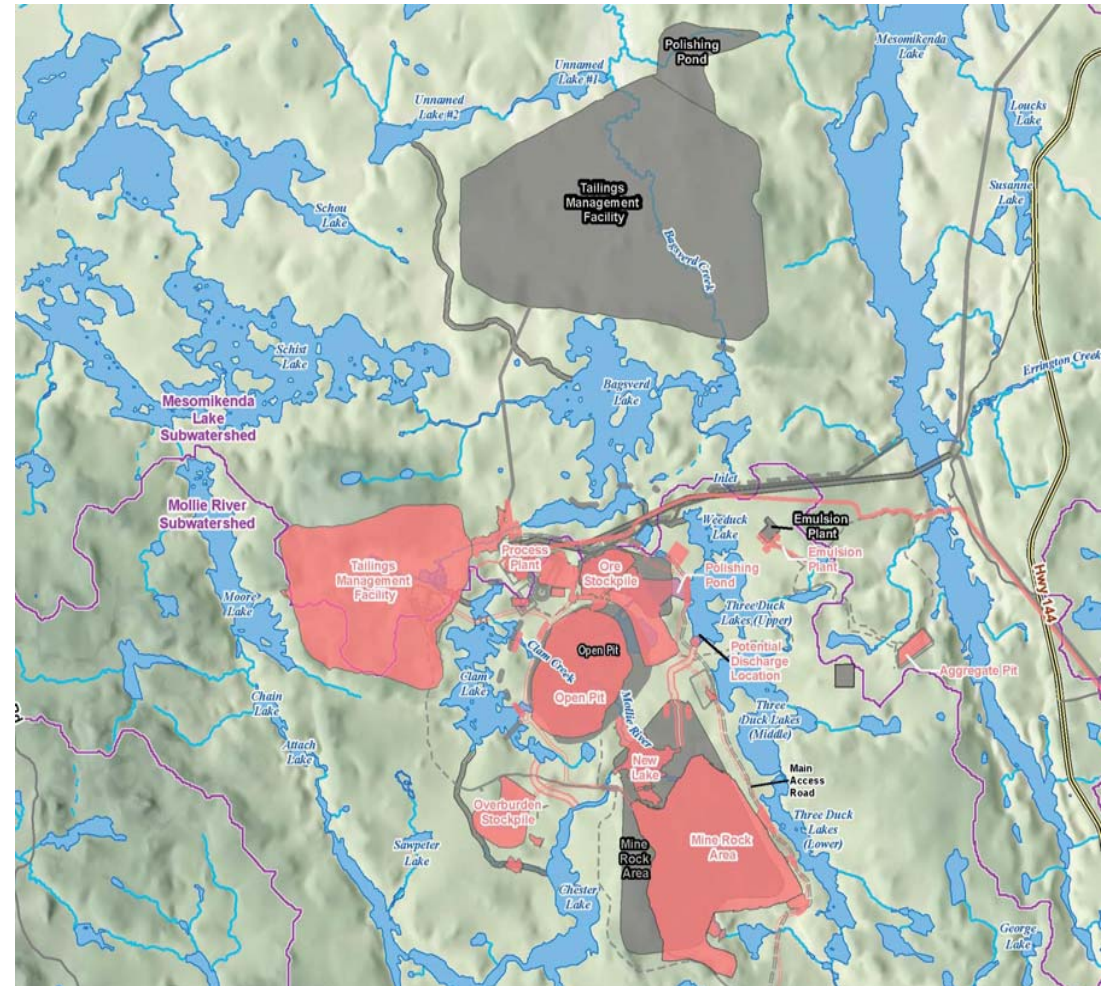


# New Côté Gold Project Layout



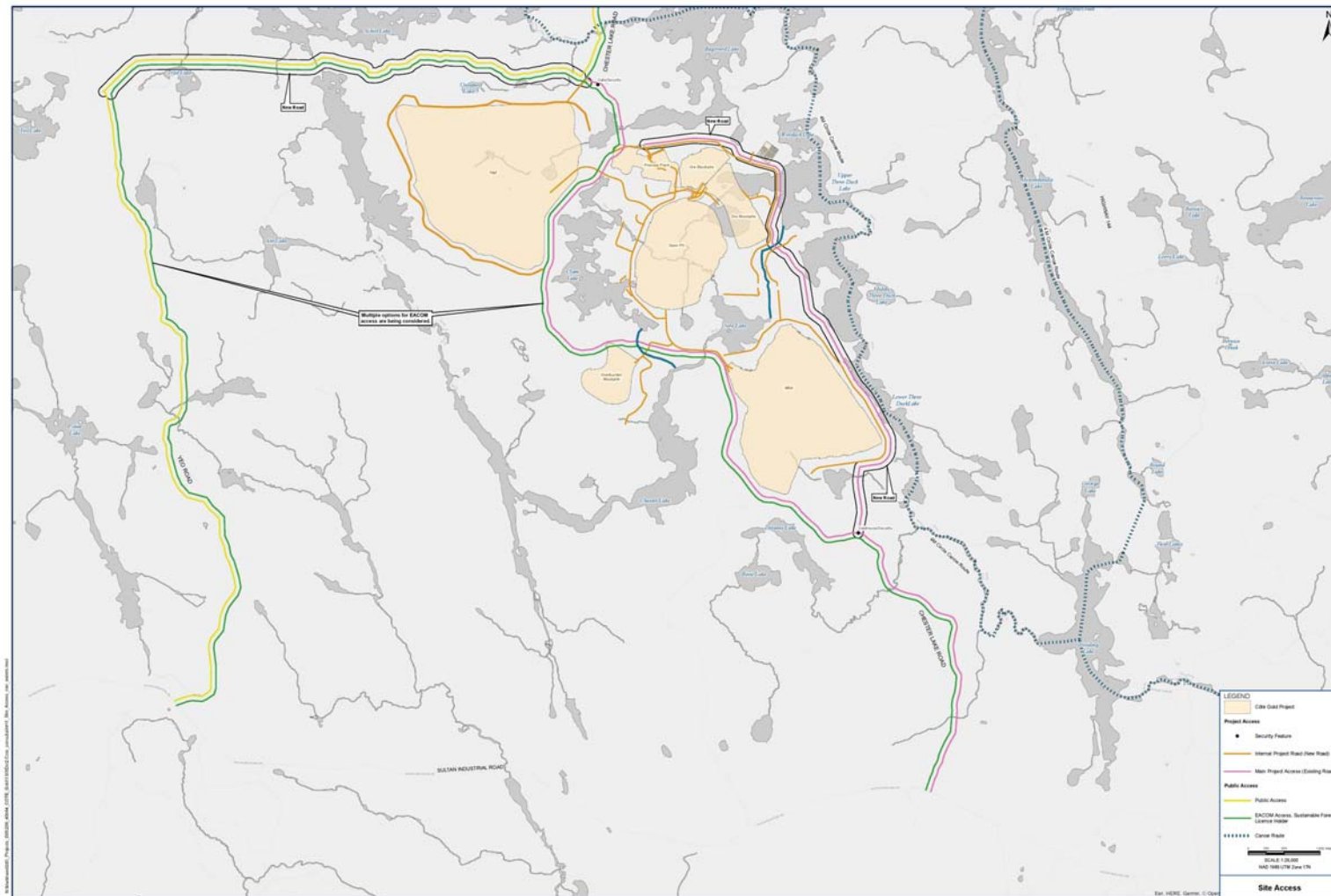
# Côte Gold Project Layout – Comparison of Old and New

- Project layout assessed during the environmental assessment
- Optimized Project layout





# Côté Gold Project – Site Access



# Overview of Key Optimizations

Component	Previous Project Design (EA)	Current (EER)
Footprint	1,700 hectares (ha)	1,050 ha
Life of Mine	15 years	17 years
Open Pit		
Footprint	210 ha	145 ha
Mining Rate	60,000 tonnes per day (tpd)	36,000 tpd
Ore	261 million tonnes (Mt)	196 Mt
Mine Rock Area		
Footprint	400 ha	300 ha
Quantity	850 Mt	559 Mt
Tailings Management Facility (TMF)		
Location	North of open pit (overprinting portions of Bagsverd Creek)	Northwest of open pit
Footprint	840 ha	478 ha
Storage Capacity	261 Mt	200 Mt
Maximum Dam Height	45 metres (m)	70 m
Water Discharge Location	Bagsverd Creek	Three Duck Lakes (Upper)
Camp Location	Northwest of Open Pit	Between Three Duck Lakes and Bagsverd Lake
Overburden Stockpile	Integrated in Mine Rock Area	Southwest of Open Pit
Watercourse Realignments	7.9 km (7 realignments)	2.4 km (2 realignments)
Transmission Line Alignment	230 kilovolt (kV) Cross Country Alignment from Timmins (approximately 120 km)	Existing Hydro One Line from Timmins to Shining Tree and 115 kV transmission line alignment from Shining Tree (44 km)



# Overview of Key Optimizations and Responses to Concerns

## Issues and Concerns Raised during the EA Process

- Increased access for hunting and use of new transmission line right-of-way
- Potential effects on wildlife

- Visual and noise effects of Tailings Management Facility (TMF) from Mesomikenda Lake
- Watercourse realignments (number and length)
- Overall Project footprint

- Loss of habitat from draining Côté Lake
- Surface water loss

- Project footprint

## How the Optimized Project Layout Addresses Issues and Concerns

Use of existing transmission line alignment and infrastructure (Shining Tree)

New location for Tailings Management Facility (TMF)

Creation of a new lake

Smaller Project footprint

# Environmental Effects Review (EER)

## ■ **Comparison of the previous and optimized Project layouts**

- › Updates to Project effects on the environment
- › Updates to mitigation measures
- › Updates to environmental management and/or monitoring programs

## ■ **The EER will be submitted to the federal and provincial governments and will be shared publicly**

## ■ **The EER is underway and preliminary results show**

- › The optimized Project has similar or reduced potential for environmental effects
- › The evaluation of potential risk to human and ecological health is consistent with the EA – in fact, emissions rates and predicted concentrations in the receiving environment are lower
- › The conclusions from the environmental assessment are still valid

# EER Results – Air, Noise and Vibration

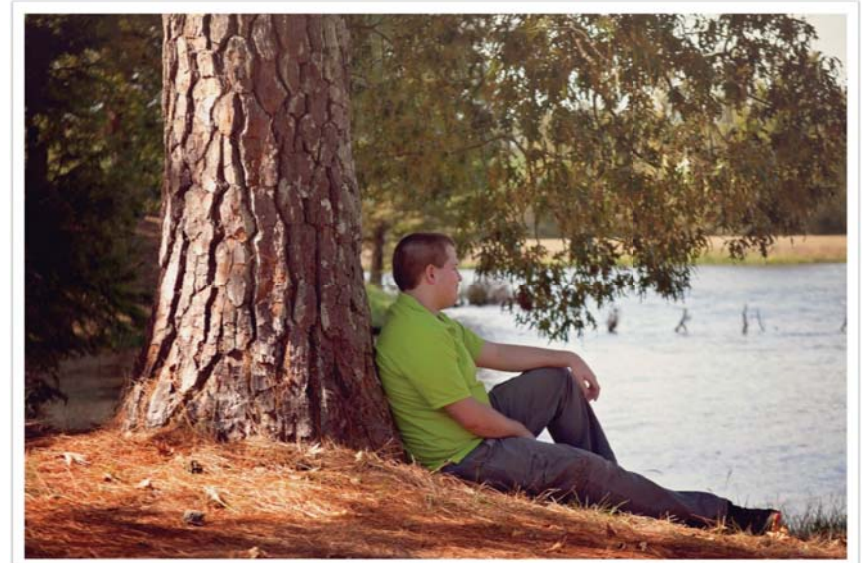
## ■ Reduced effects on air quality

- › Reduced emissions  
(smaller mine fleet, condensed Project layout)
- › ~28% reduction in GHG predictions  
(less equipment required)

## ■ Reduced noise emissions

- › Mitigation proposed in EA for nighttime operations no longer required

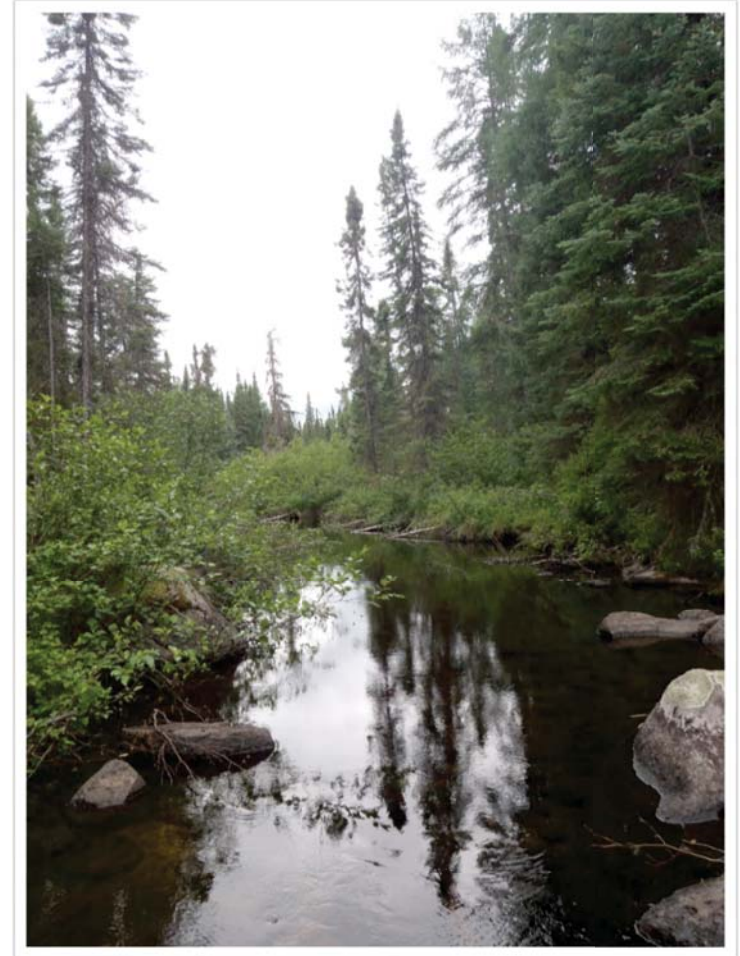
## ■ Continued commitment for monitoring of air, noise and vibration



# EER Results – Groundwater and Surface water

## ■ Reduced groundwater and surface water effects

- › Fewer watercourse realignments (from 7 to 2)
- › Operations no longer impacting Bagsverd Creek
- › Shortened pit flooding during Closure & Post-closure
- › Quicker return of groundwater levels to pre-mining conditions
- › Water quality predictions are consistent with the EA





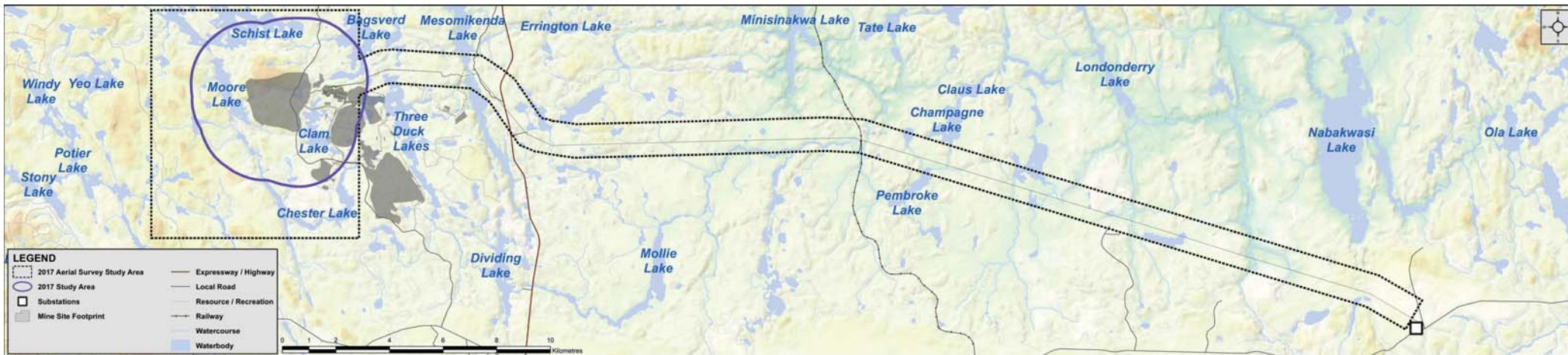
# EER Results – Terrestrial and Aquatic Biology

## ■ Reduced effects on aquatic and terrestrial habitat

- › Smaller Project footprint
- › Less clearing for the new transmission line route
- › Fewer water realignment channels
- › Creation of a new lake



**Relocation and smaller TMF avoids Painted Turtle habitat and other sensitive species**



# EER Results – Archaeology and Built Heritage

- **No archaeological or built heritage resources will be affected by Project (no changes from EA)**



- **Based on feedback during the EA**
  - › Additional field work planned in 2018
  - › Discussions about protocols for curation and storage
  - › Licensed archaeologist will monitor dewatering of Côté Lake

## EER Results – Land Use and Socio-Economics

### ■ Improved economic benefits from extended operation timeframe (from 15 to 17 years)

- › Extended duration for employment opportunities
- › Positive impact to local businesses and professional services
- › Increased Government revenue from taxation to support local communities and services

### ■ 4M Circle Canoe Route

- › Route will no longer be affected by watercourse realignments
- › Accessible throughout all project phases; facilitated access at one portage location (no change from EA)

### ■ Use of existing transmission line right-of-way addresses concerns about hunting access along route shown in EA



## EER Results – Traditional Land Use

- **Effects on traditional land uses are predicted to be less than or equal to EA predictions**
  - › More compact Project footprint
    - › Decreased habitat loss
  - › Shorter Transmission Line using existing corridor
    - › Responds to concerns about increased vegetation loss and potential increased access for hunting and use
  - › Traditional canoe route
    - › For safety, Clam Lake will be inaccessible during Construction and Operations Phases
    - › IAMGOLD remains committed to facilitating safe navigation for traditional canoe route users

**IAMGOLD will continue to discuss potential Project effects on traditional activities with potentially affected Indigenous communities throughout the life of the Project.**



# EER Results – Visual Aesthetics

## ■ Mine Rock Area (MRA)

- › Less visible compared to EA design (smaller footprint, portions that are further from shoreline, more cover from the natural topography)

## ■ Tailings Management Facility (TMF)

- › Relocated and smaller footprint, increased dam height
- › New TMF will be visible from local lakes



View of Mine Rock Area from Upper Three Duck Lake (left: EA, right: EER)

# Côté Gold Project – Closure

## ■ Progressive rehabilitation

- › Completed throughout the Operations phase with the objectives of
  - › Informing design and planning for Closure and rehabilitation
  - › Testing rehabilitation methods (where possible)
  - › Stabilizing Project components as they reach completion to meet end land use objectives
  - › Reducing the long-term liabilities associated with the site and thereby reducing the required value of financial assurance

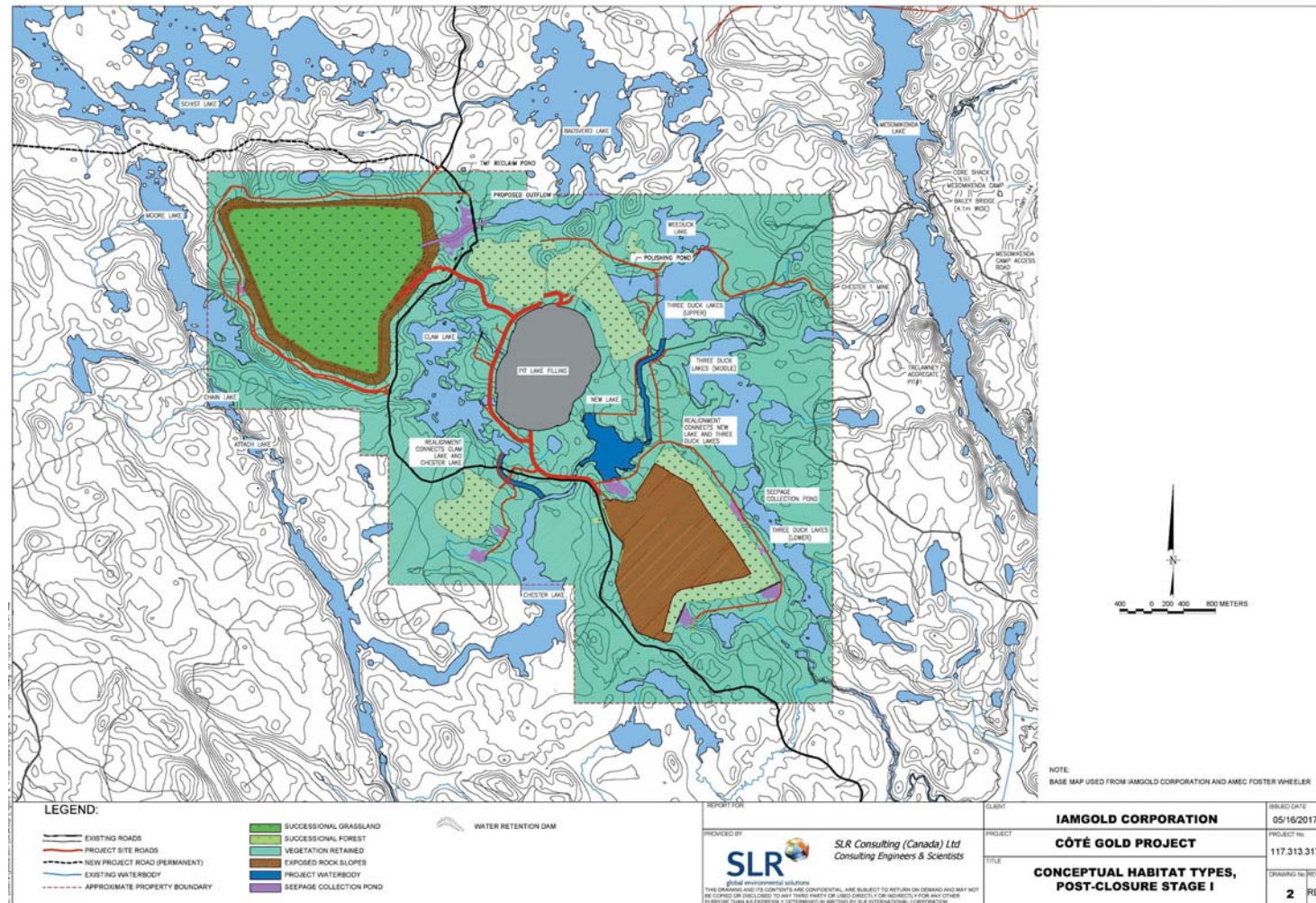
## ■ Closure phases

- › Closure – removal of infrastructure and re-vegetation (2 years)
- › Post-closure Stage 1 – open pit filling (25-30 years)
- › Post-closure Stage 2 – return sub-watersheds to pre-Project conditions (where practicable)

## ■ Close-out

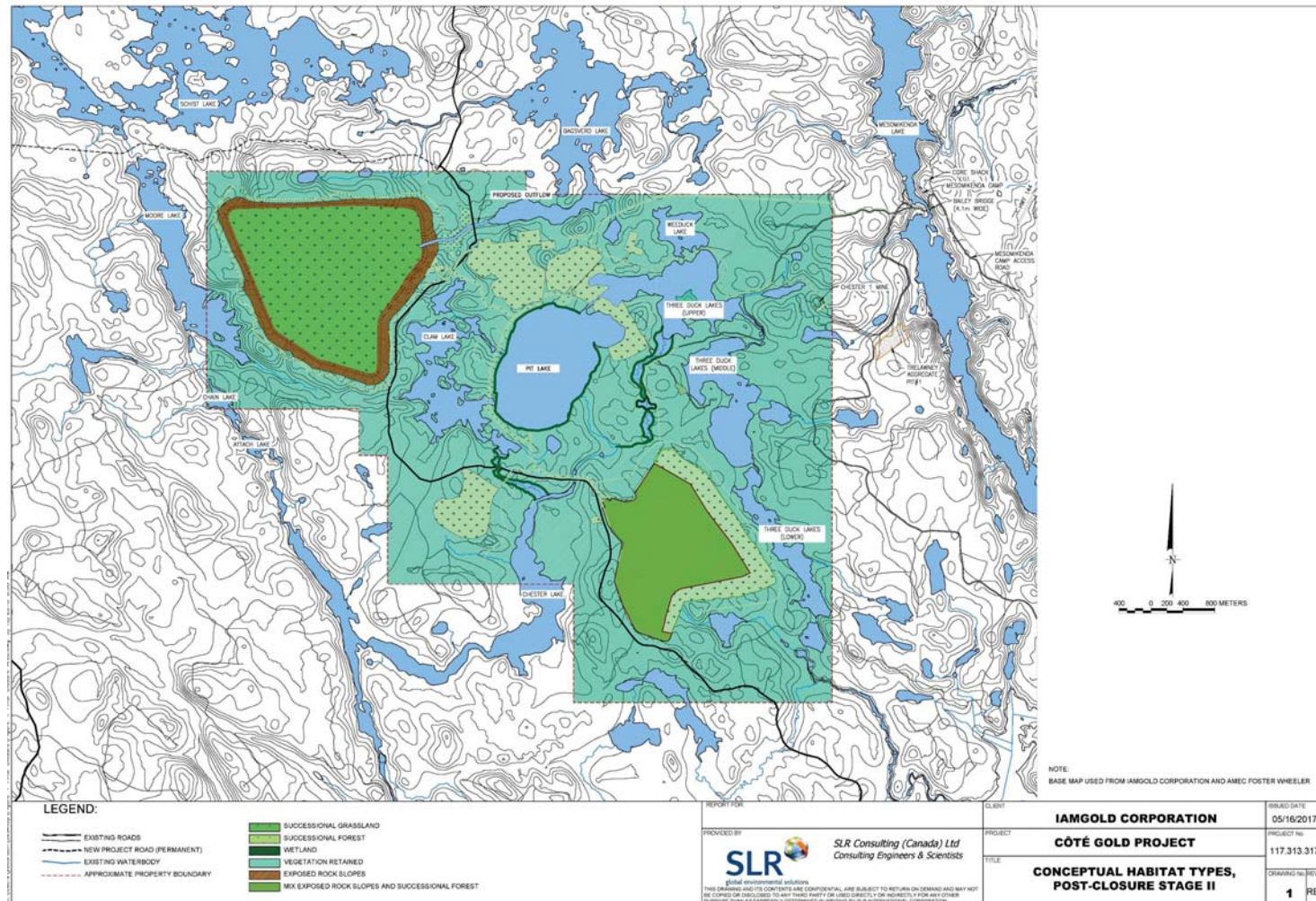
- › Defined in *Mining Act* – “the final stage of closure has been reached and that all requirements of a Closure Plan have been complied with”

# Côté Gold Project Post-closure – Stage 1





# Côté Gold Project Post-closure – Stage 2

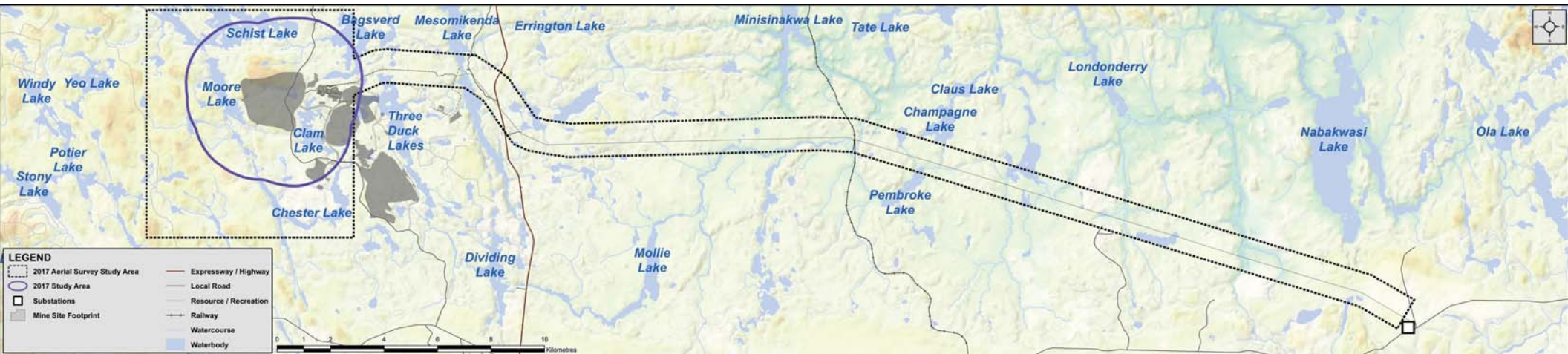




# Transmission Line from Project Site to Shining Tree DS



## 2017 Biological Inventory Study Areas





# Transmission Line from Project Site to Shining Tree DS

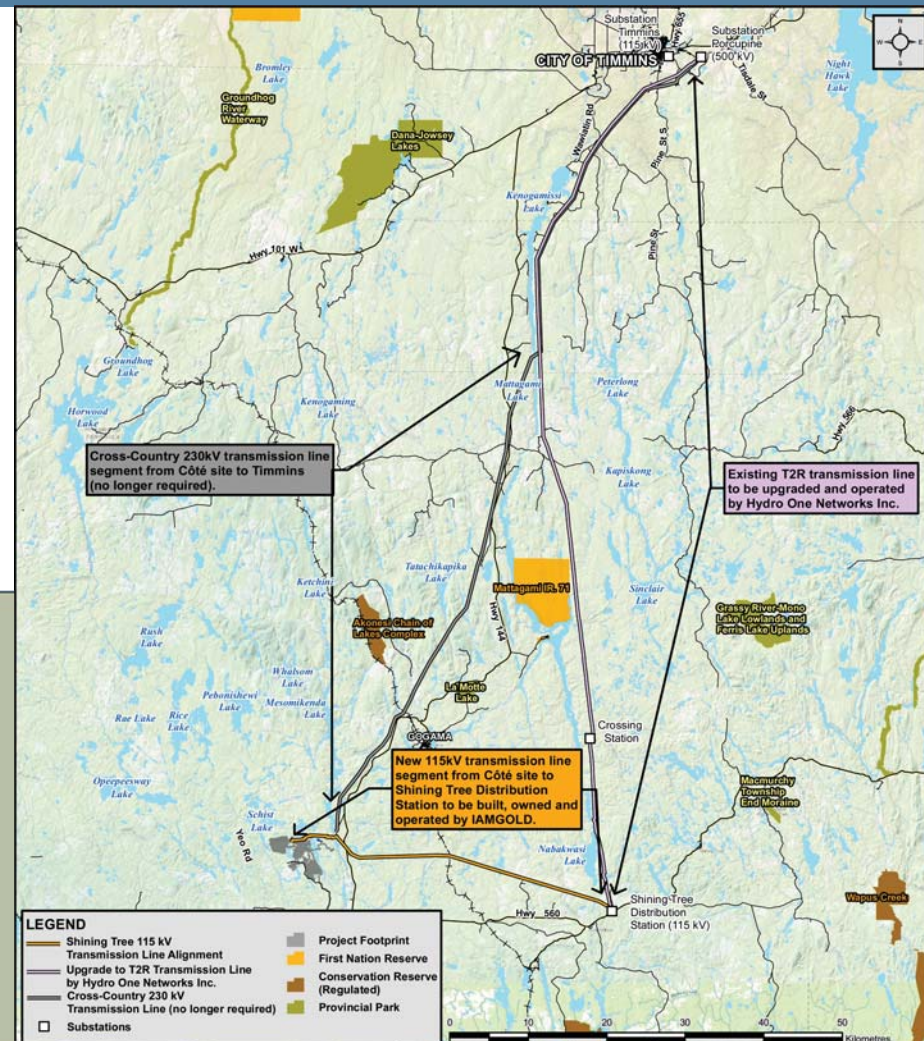
Existing Corridor between Project Site and Shining Tree DS



Typical H-Frame Transmission Line and Poles



Source: Detour Gold



# Transmission Line Alignment Côté Gold Project to Shining Tree Distribution Station

## ■ Proposed 44 km, 115 kV transmission line

- › Located almost entirely along an existing right-of-way
- › Minor vegetation clearing will use mechanical means
- › IAMGOLD to consult with local trappers and land users

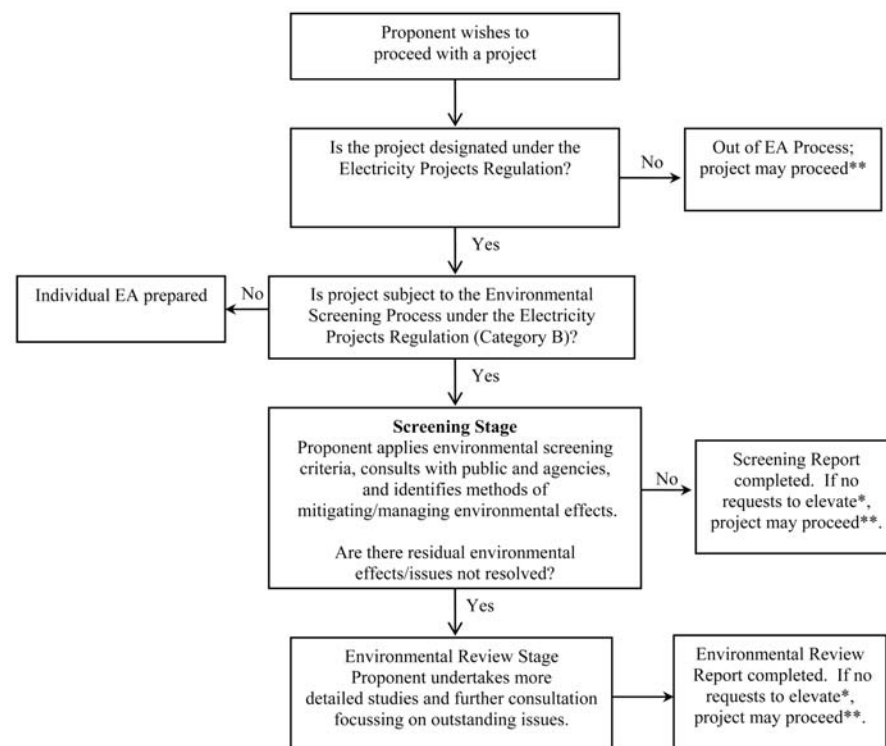
## ■ Additional baseline studies (2017)

## ■ Class Environmental Assessment is required

- › Screening report will identify potential environmental effects and proposed mitigations
- › 30-day review period for screening report

### Key Features of the Environmental Screening Process

Note: This flow chart is to be read in conjunction with the Environmental Screening Process for electricity projects



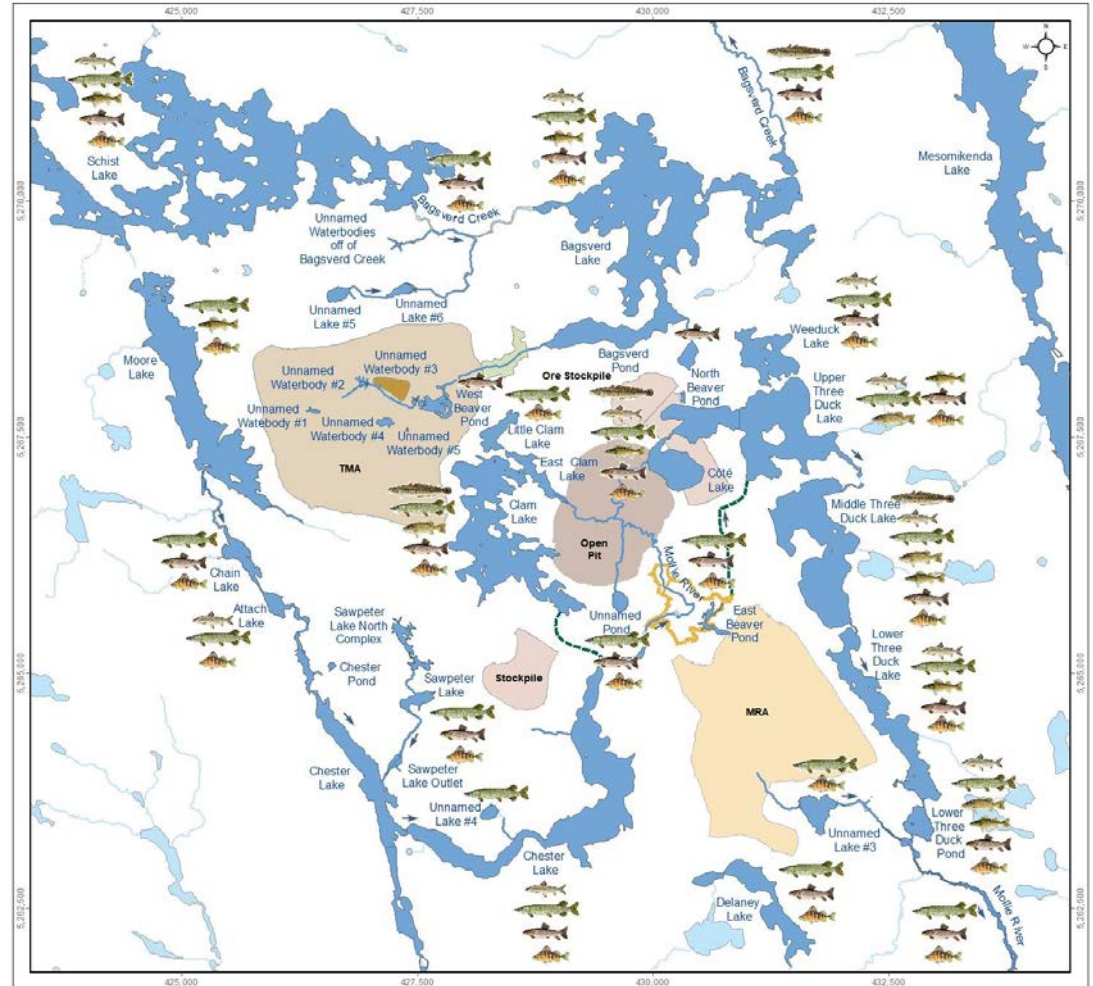
\* see section B.4.1.1 and Figure 3 in Part B of this Guide for information on elevation requests.  
\*\* project may proceed subject to any other required approvals

Source: Guide to Environmental Assessment Requirements for Electricity Projects (2011)



# Current Conditions

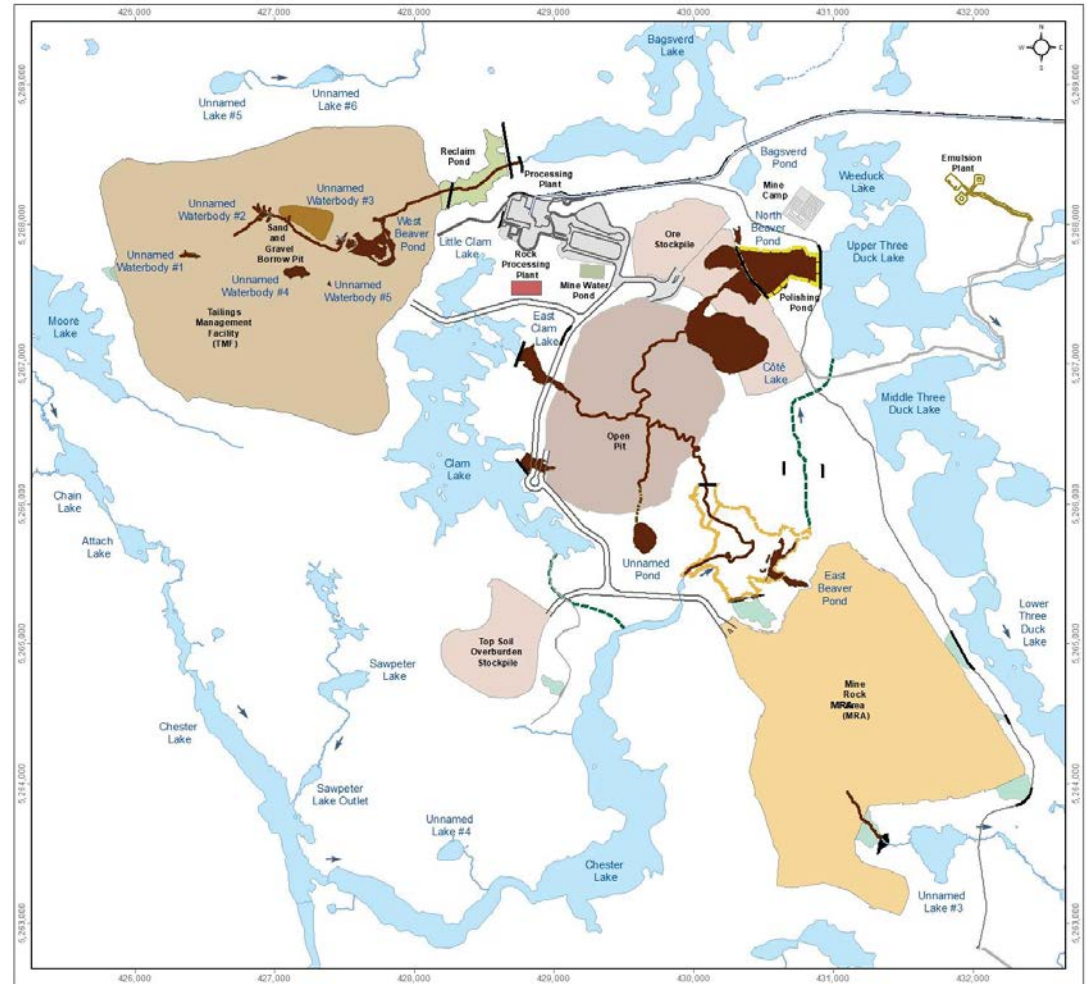
- **Shallow lakes connected by small streams**
- **Stream habitat dominated by slow meandering watercourses with heavily vegetated banks and a silty bottom**
- **Fish Populations**
  - Most abundant: northern pike and yellow perch
  - Common: walleye, smallmouth bass, lake whitefish and white sucker
  - No endangered, threatened or special concern fish species





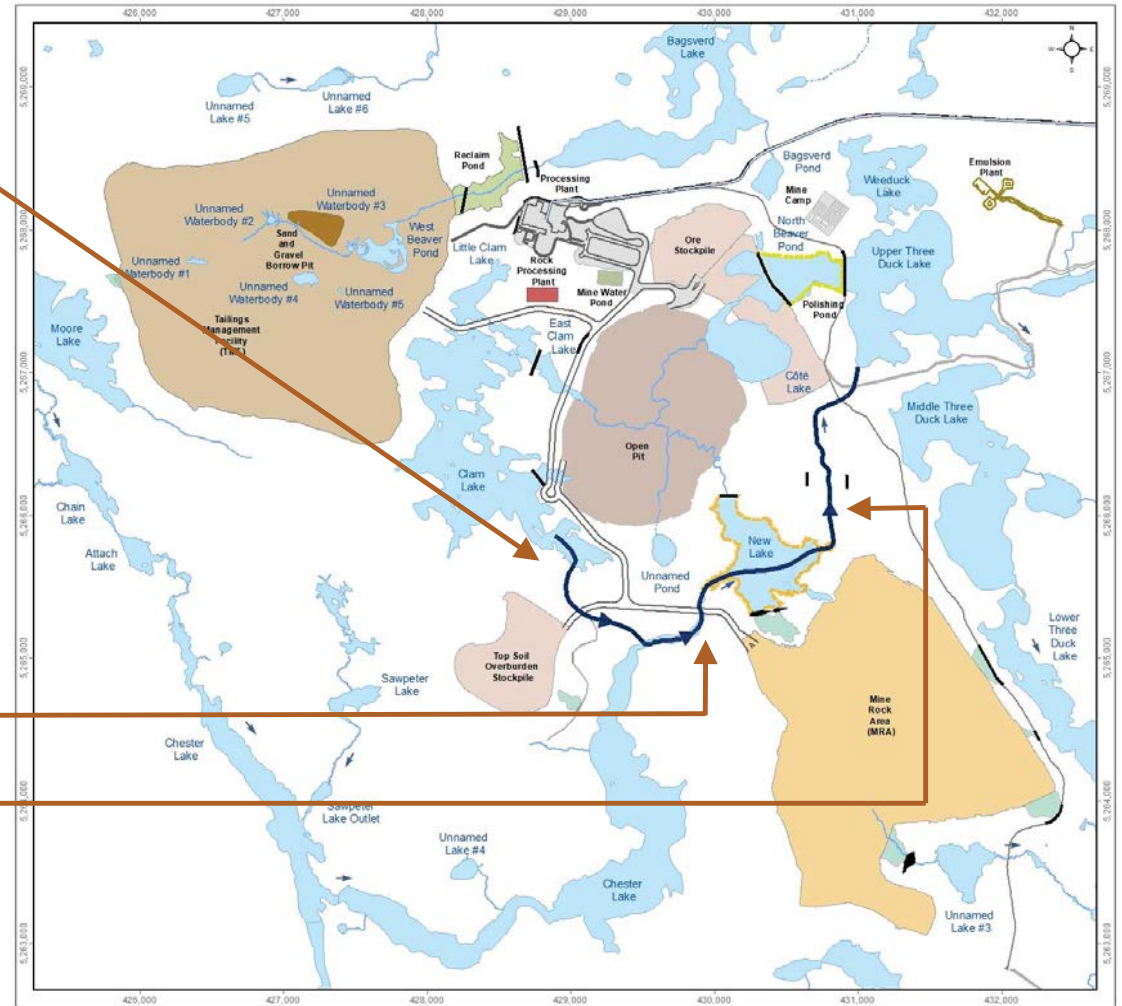
# Construction Phase – Fish Habitat Changes

- **Lake and stream habitat (dark brown) changes include Côté Lake, small ponds and the West Arm of Upper Three Duck Lake**
- **Mollie River and Clam Creek realigned to accommodate the open pit**
- **Tailings Management Facility will overprint West Beaver Pond, a number of small ponds and a small stream**
- **Mine Rock Area will overprint a small portion of East Beaver Pond and a small stream**



# Operations Phase – Active Flow Through Realignment

- **Clam Lake water will flow south to Chester Lake in realignment channel**
- **Chester Lake water will flow to the Mollie River and flow north east into a newly constructed lake**
- **New Lake will flow into a watercourse realignment to Upper Three Duck Lake**



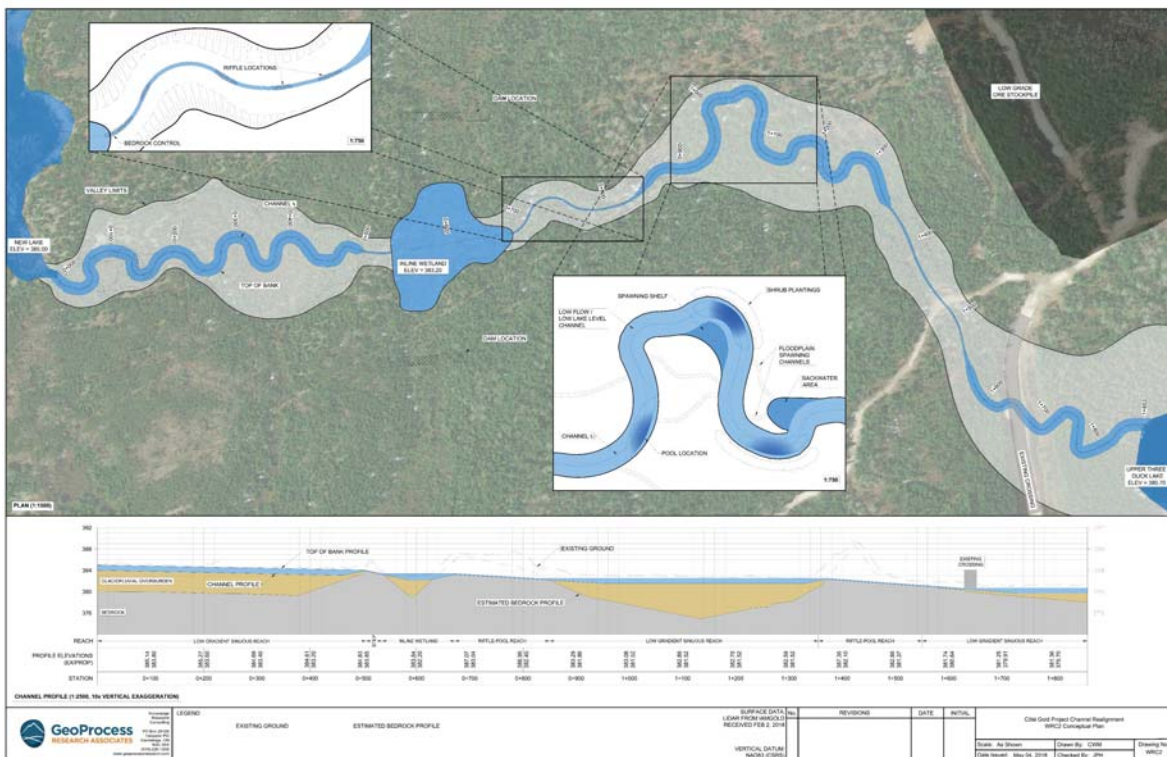
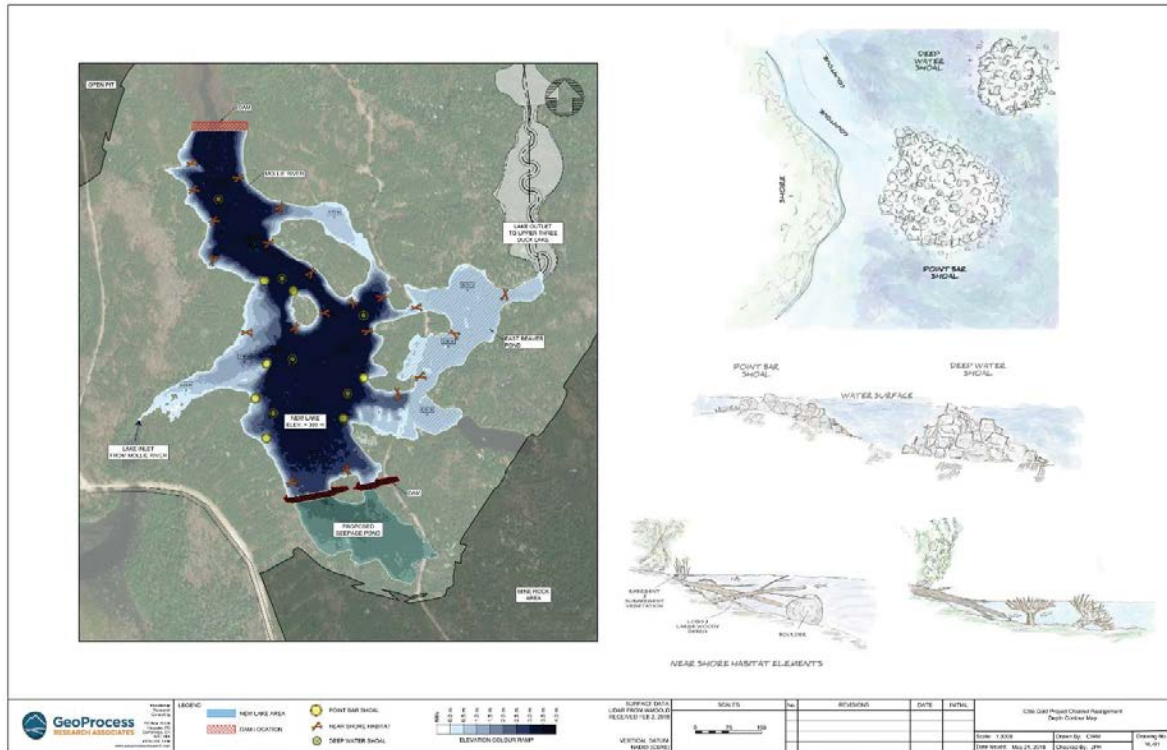
# Strategies to Support New Habitat

- Incorporate features typically found in rivers (spawning habitat, rock clusters)
- Move plants to support new vegetation growth
- Relocate fish



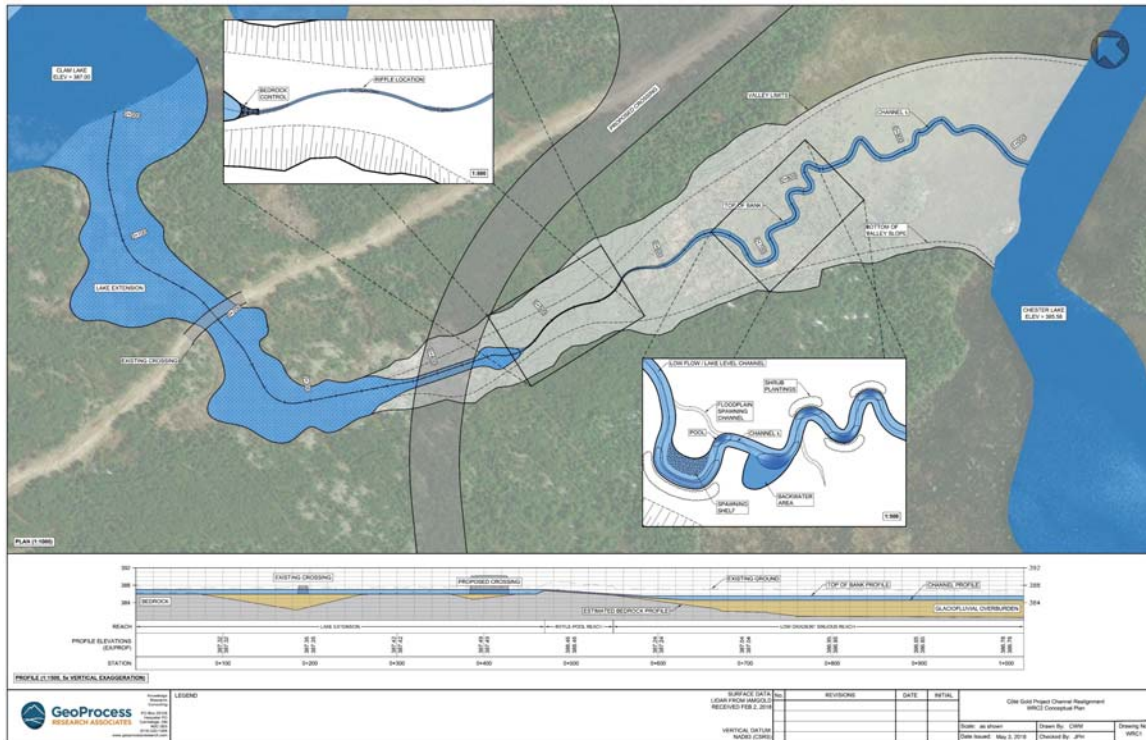


# New Lake and Outlet Channel



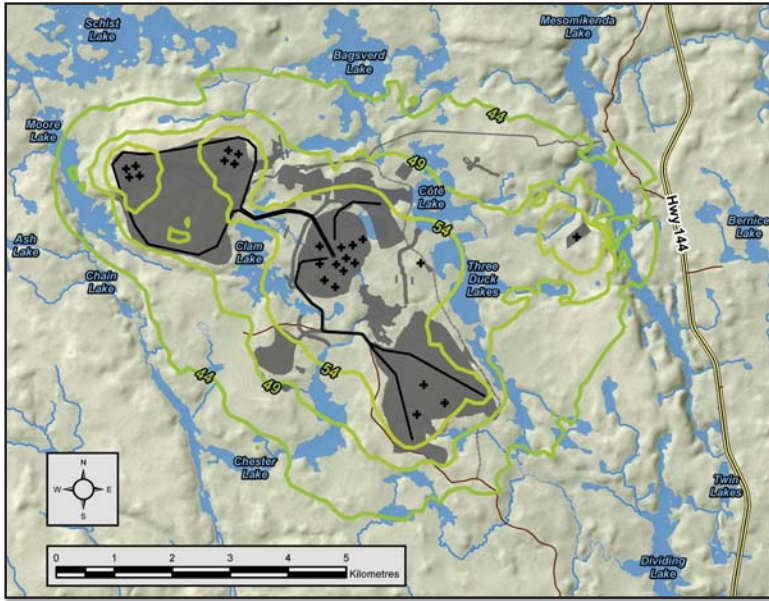


# Clam Lake to Chester Lake Channel



# Construction Noise Levels

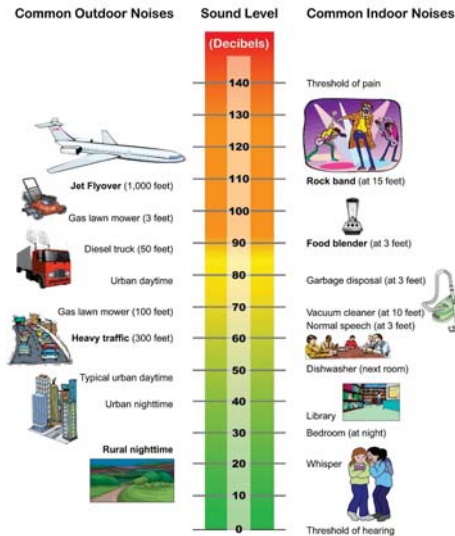
Day



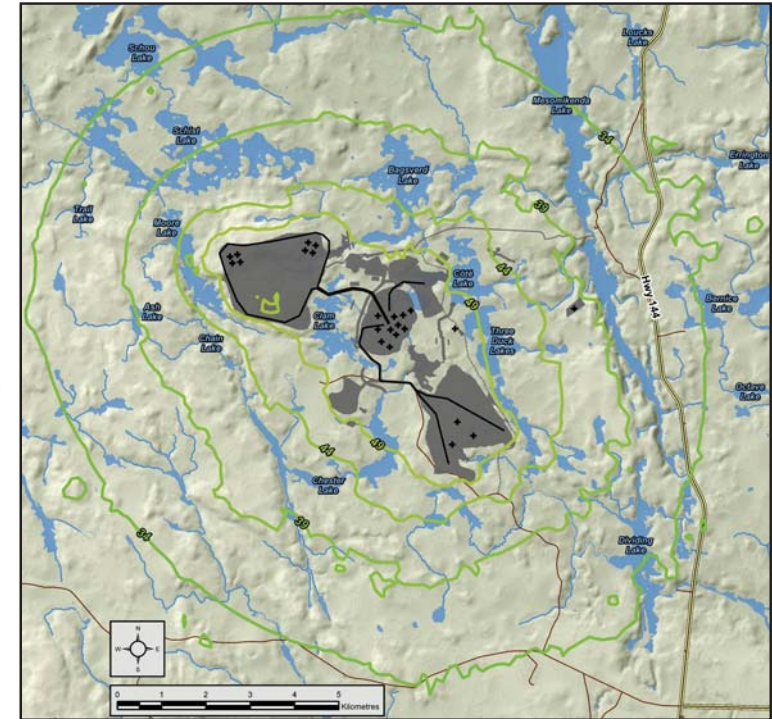
## LEGEND

- + Point Noise Sources
- Line Noise Sources
- Côté Gold Project Footprint
- Highway
- Local Road
- ~>=44 dBA
- ~>=49 dBA
- ~>=54 dBA

## Common Indoor and Outdoor Noise Levels\*



Night



## LEGEND

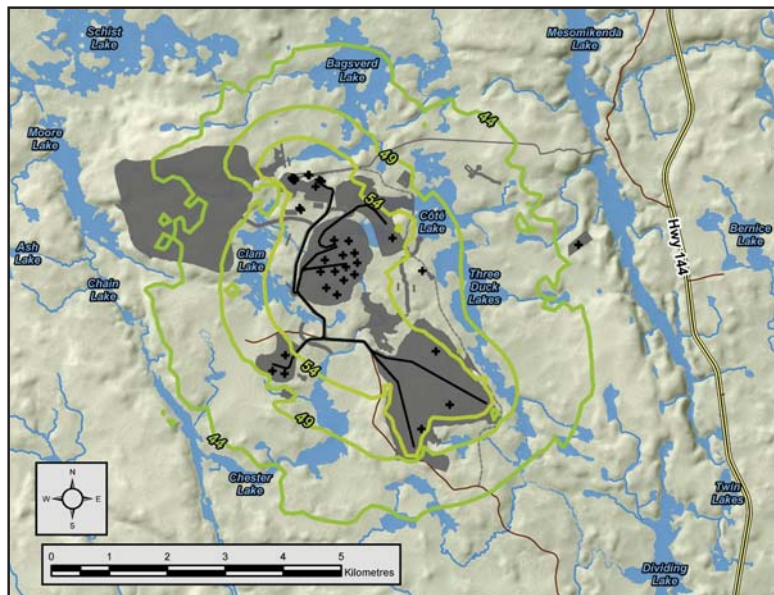
- + Point Noise Sources
- Line Noise Sources
- Côté Gold Project Footprint
- Highway
- Local Road
- ~>=34 dBA
- ~>=39 dBA
- ~>=44 dBA
- ~>=49 dBA

\* Image extracted from Arizona Department of Transportation (ADOT, Sept. 2008); NOTE: Sound is perceived differently by every individual.



# Operations Noise Levels

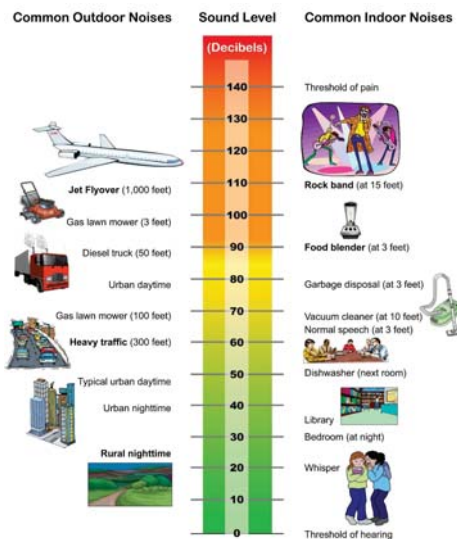
## Day



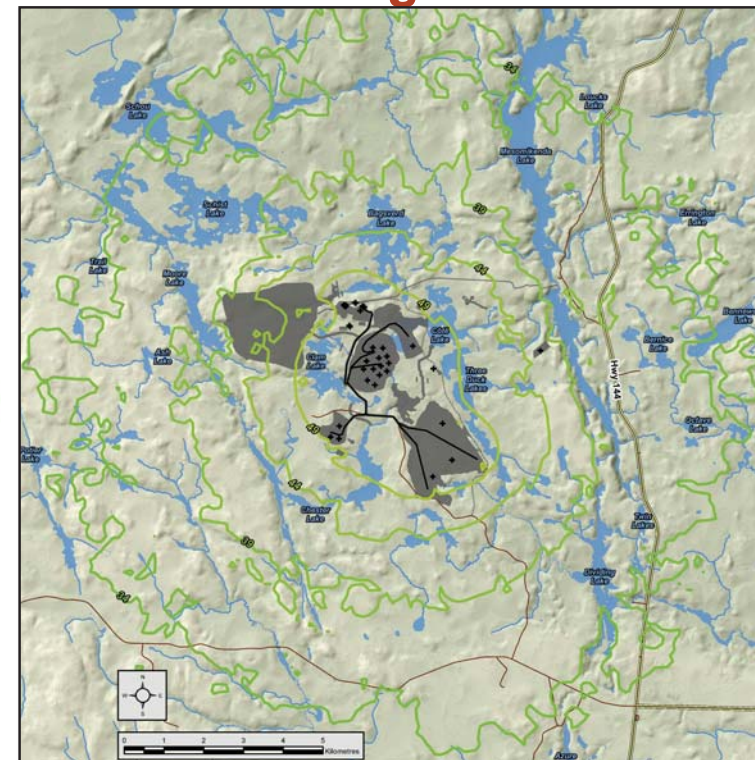
### LEGEND

- + Point Noise Sources
- Line Noise Sources
- Côté Gold Project Footprint
- Highway
- Local Road
- >=44 dBA
- >=49 dBA
- >=54 dBA

## Common Indoor and Outdoor Noise Levels\*



## Night



### LEGEND

- + Point Noise Sources
- Line Noise Sources
- Côté Gold Project Footprint
- Highway
- Local Road
- >=34 dBA
- >=39 dBA
- >=44 dBA
- >=49 dBA

Notes:

NPC-300 daytime criteria of 45 dBA at receptor locations

NPC-300 nighttime criteria of 40 dBA at receptor locations

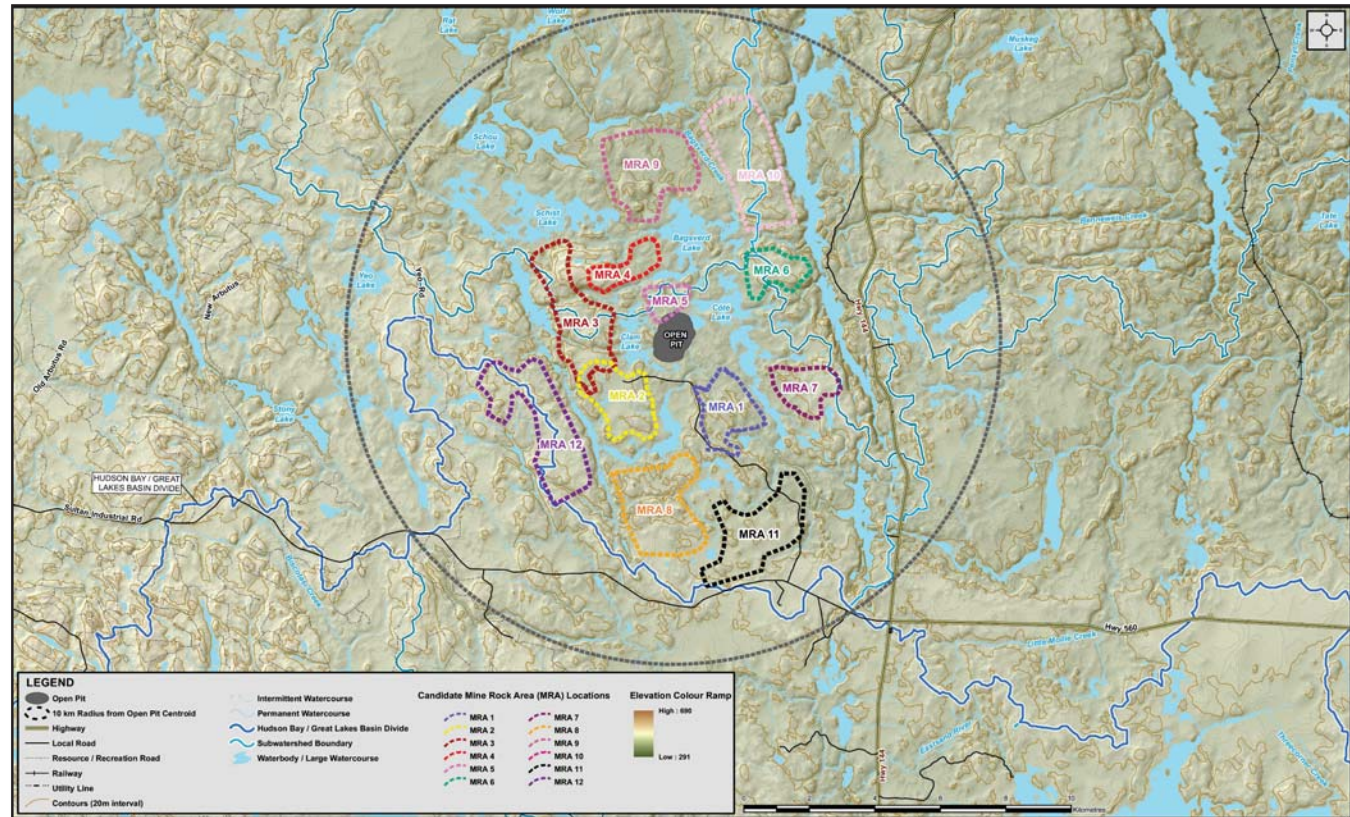
\* Image extracted from Arizona Department of Transportation (ADOT, Sept. 2008); NOTE: Sound is perceived differently by every individual.

# Assessment of Alternatives – Mine Rock Area

## ■ 12 potential Mine Rock Area locations identified based on

- › Land ownership and mineral rights
- › Watershed considerations
- › Social and cultural impact
- › Environmental impact
- › Location capacity
- › Proximity to mine infrastructure

## ■ 5 locations were suitable for additional analysis



\*Process to meet Mining Metal Effluent Regulations Schedule 2 Amendment



## Assessment of Alternatives – Mine Rock Area

- **Assessment considered 4 aspects**

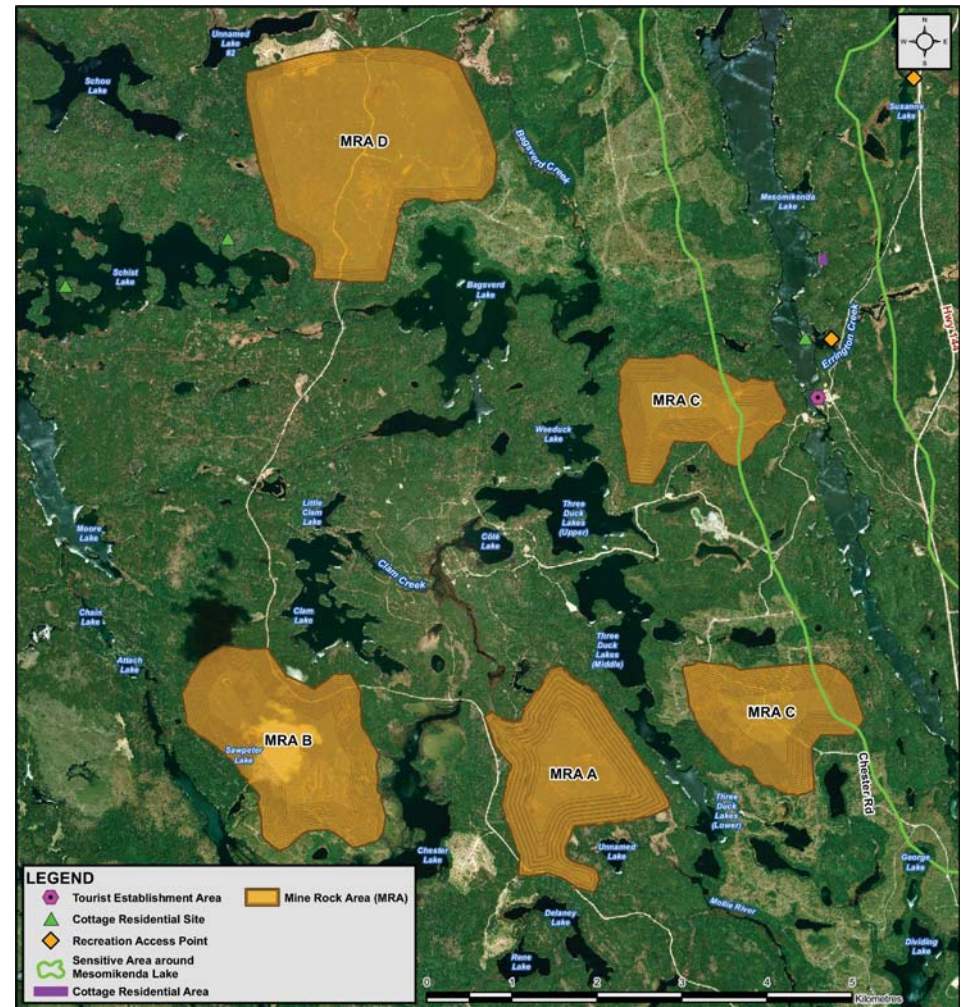
- › Environmental
- › Social
- › Technical
- › Cost

- Indicators were developed for each aspect

- Alternatives were rated based on performance of indicators

- Mine Rock Area 'A' is the preferred alternative

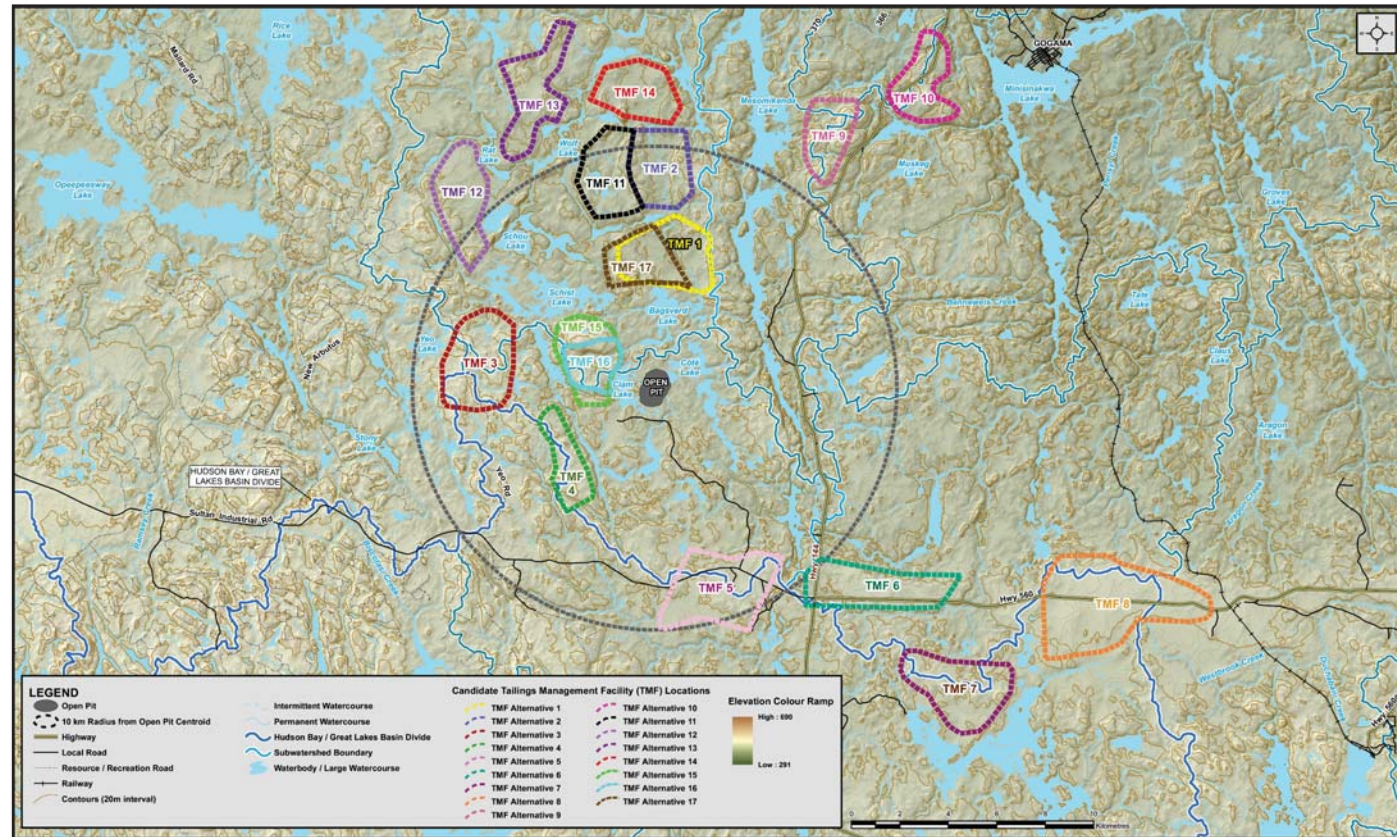
\*Process to meet Mining Metal Effluent Regulations Schedule 2 Amendment





# Assessment of Alternatives – Tailings Management Facility

- 17 potential Tailings Management Facility locations identified
- Alternatives looked at different locations and methods of tailings management
- 3 potential technologies were considered
  - › Conventional slurry
  - › Thickened tailings
  - › Filtered (dry) stack



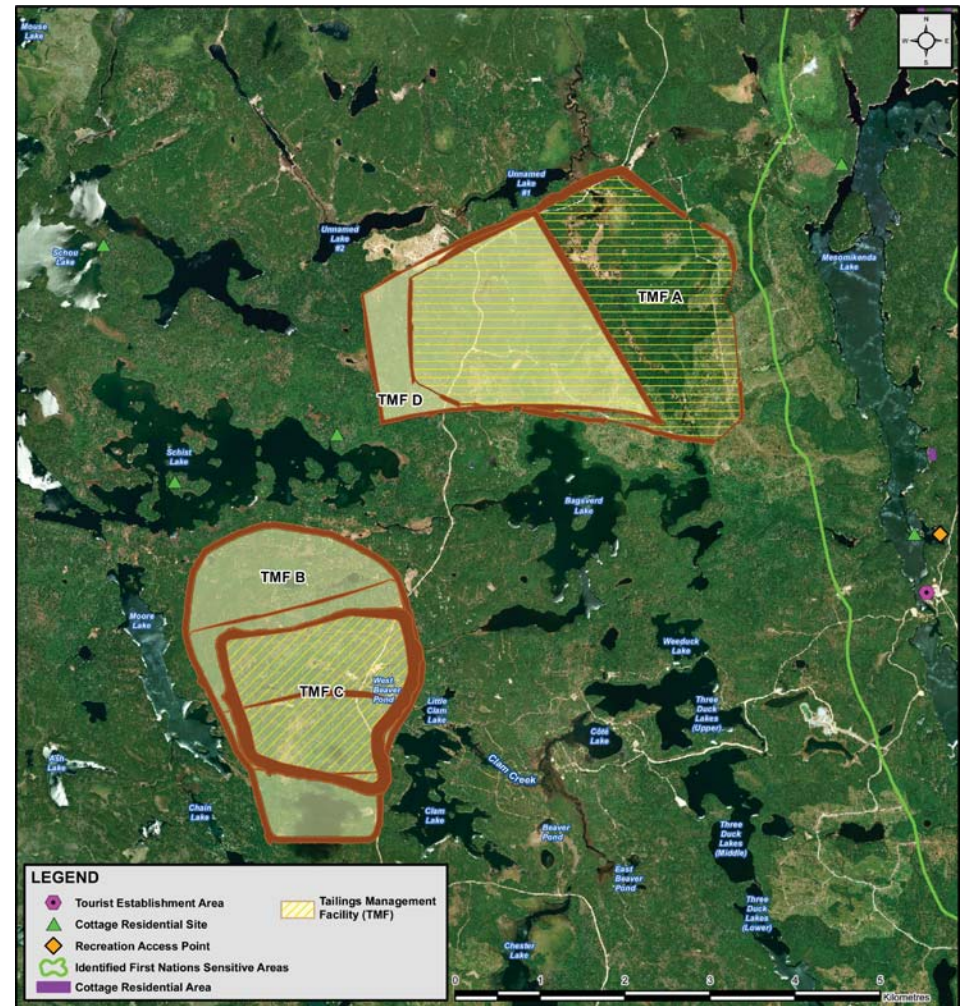
\*Process to meet Mining Metal Effluent Regulations Schedule 2 Amendment



# Assessment of Alternatives – Tailings Management Facility

- 4 locations were suitable for additional analysis
- Assessment considered 4 aspects
  - › Environmental
  - › Social
  - › Technical
  - › Cost
- Indicators were developed for each aspect
- Tailings Management Facility 'C' is the preferred alternative

\*Process to meet Mining Metal Effluent Regulations Schedule 2 Amendment







**IAMGOLD<sup>®</sup>**  
CORPORATION



# **The Côté Gold Project – Archaeological Involvement and Update for 2018**

---

# Agenda

## ■ Archaeological Assessment Processes

- › Why we are here and what we do
- › What you need to know

## ■ History of Work on the Côté Gold Project Property

## ■ Sites Which Have Been Avoided and their Locations

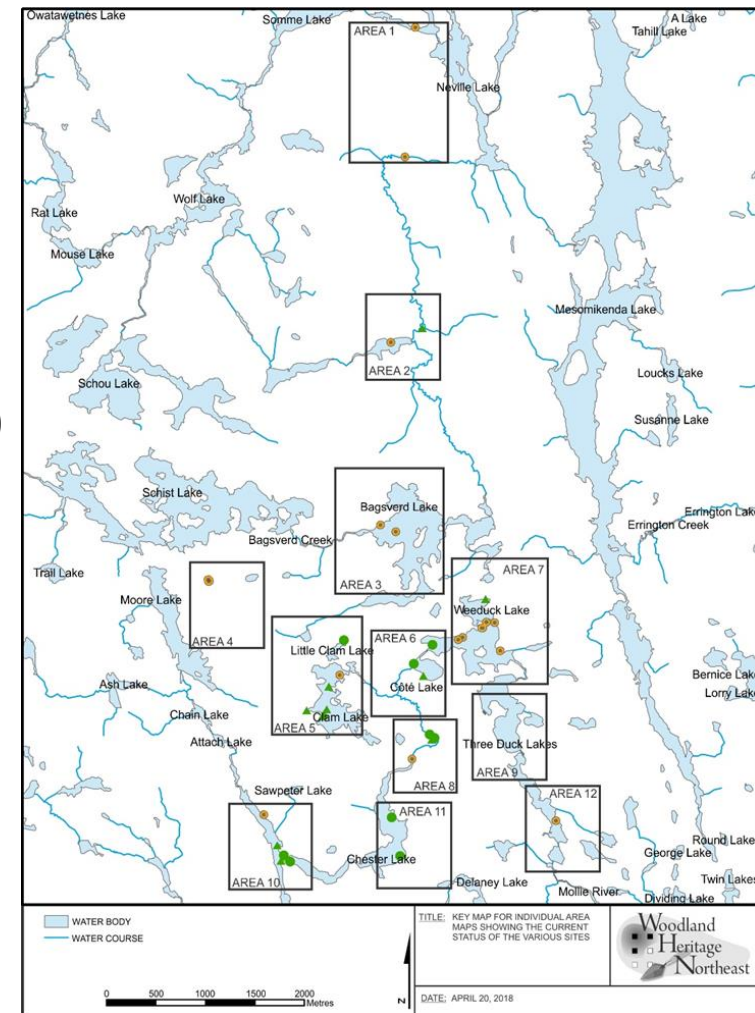
- › Sites Without Cultural Heritage Value or Interest (CHVI)
- › Mitigated Sites
- › Passive Protection Measures

## ■ Sites Requiring More Work

- › Sheppard Prospect Cabins
- › Mollie River 1
- › Weeduck Lake 1
- › Upper Three Duck Lake 1, 2 & 3

## ■ What we have learned about the mining history of the property

## ■ What we have learned about the pre-contact settlement of the area



# Archaeological Assessment Processes

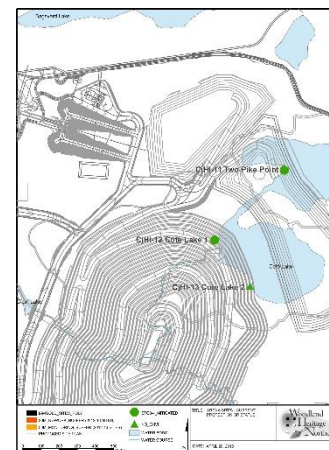
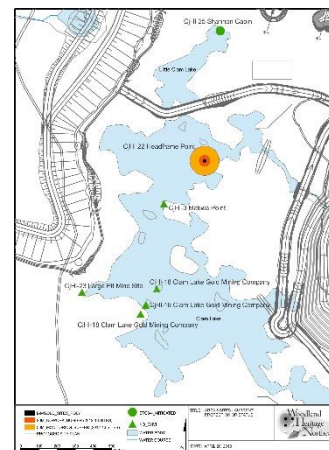
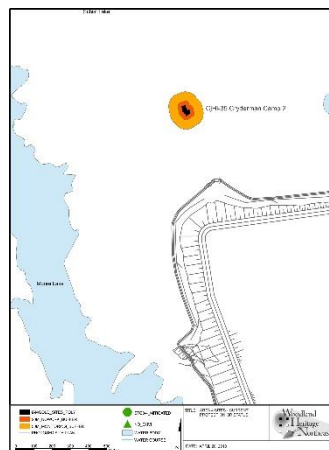
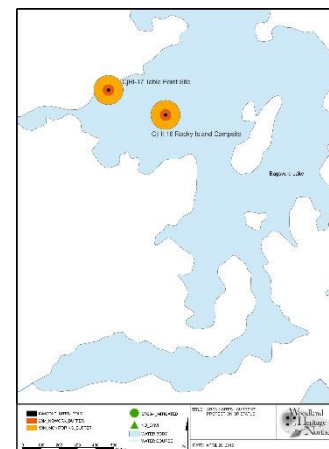
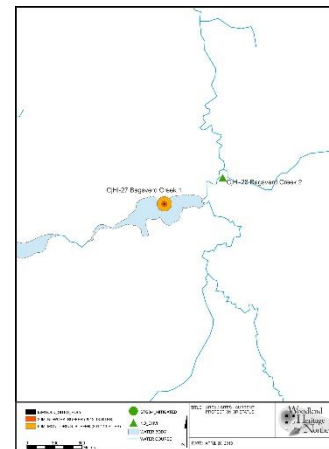
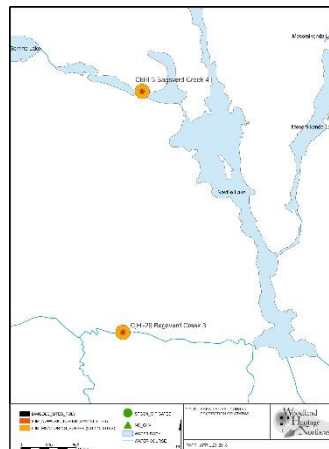
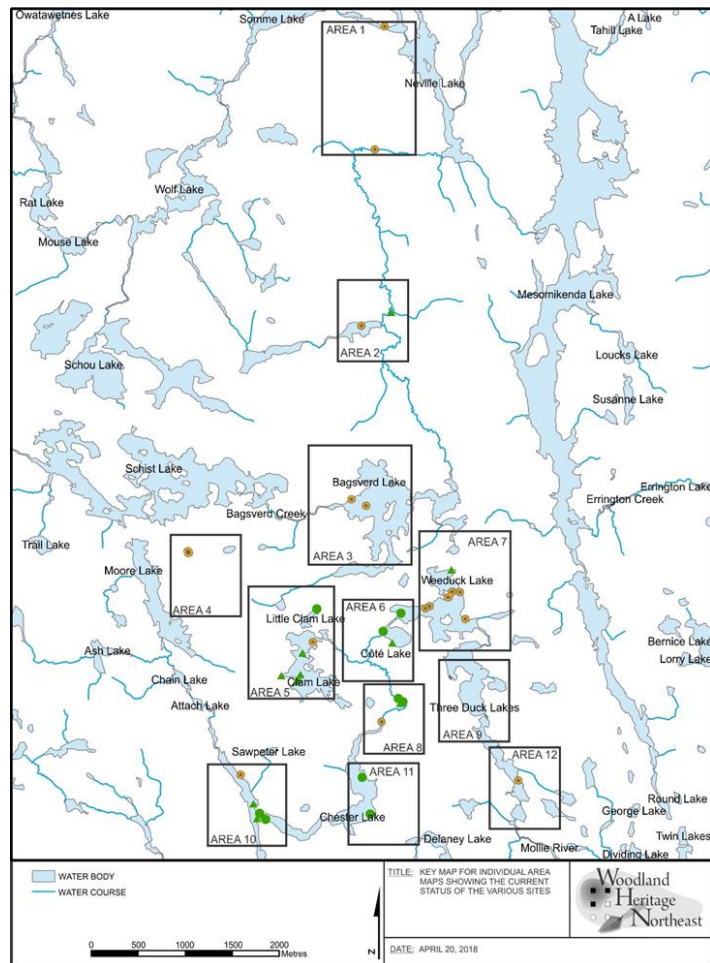
- **Under the Ontario Heritage Act, (R.S.O. 1990) anyone wishing to carry out archaeological fieldwork in Ontario must meet the following criteria:**
  - › Have a licence from the Ministry of Tourism, Culture and Sport.
  - › File a report with the Ministry of Tourism, Culture and Sport containing details of the fieldwork that has been done for each project.
  - › File information about the archaeological site with the Ministry of Tourism, Culture and Sport for each project.
- **Under Ontario Regulation 8/06 of the Ontario Heritage Act, “consultant archaeologist” means “an archaeologist who enters into an agreement with a client to carry out or supervise archaeological fieldwork on behalf of the client, produce reports for or on behalf of the client and provide technical advice to the client”.**



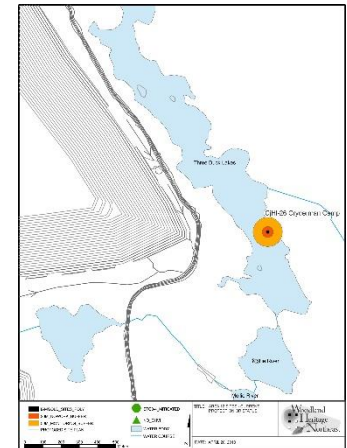
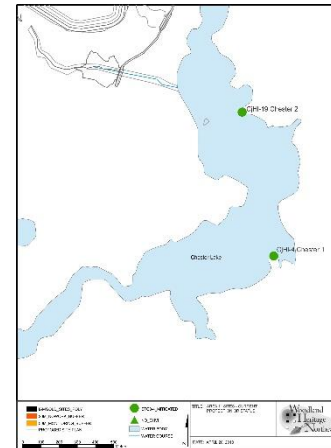
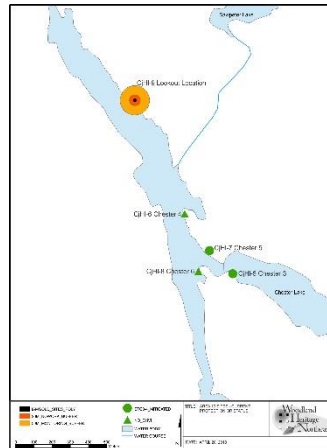
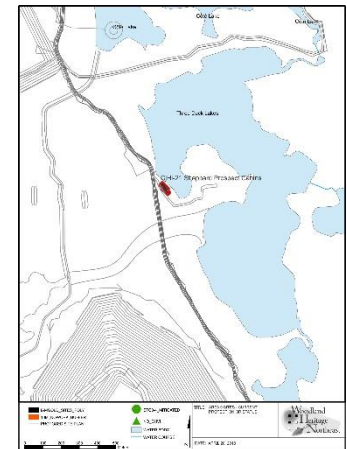
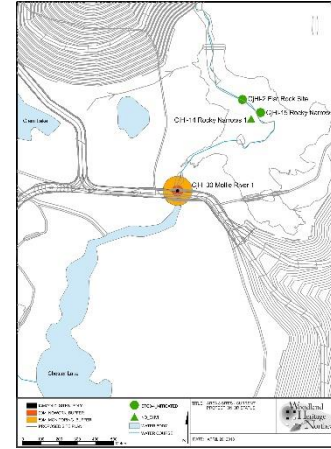
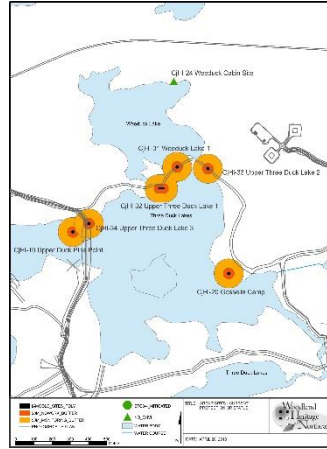
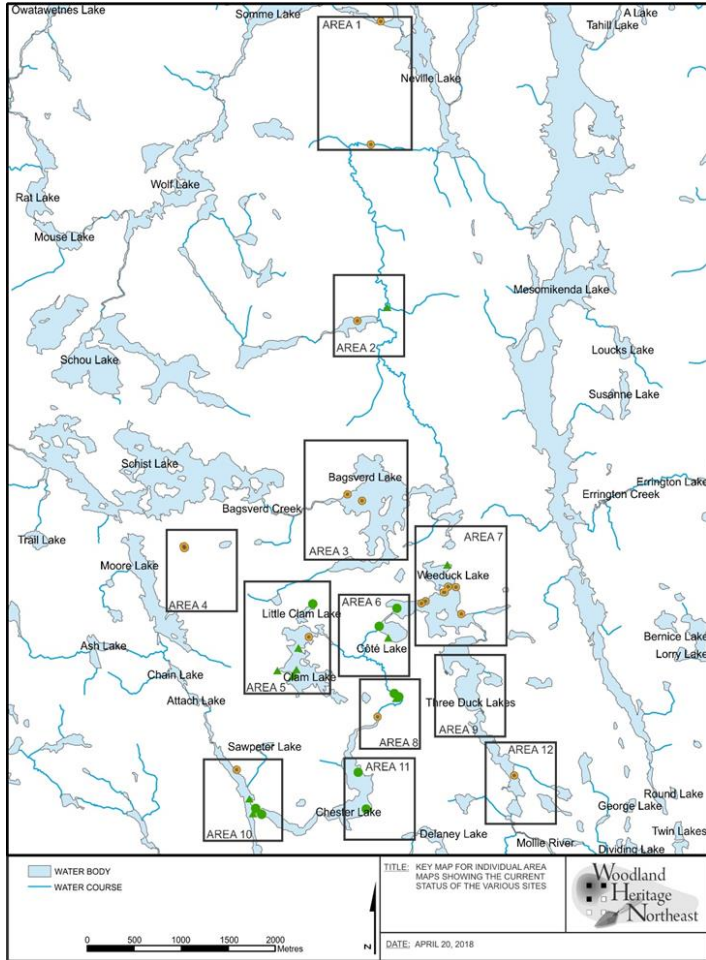
# Archaeological Assessment Processes

- **Archaeological resource assessment studies are classified as Stage 1 through Stage 4, as follows:**
  - › Stage 1: Stage 1 archaeological assessments define areas of archaeological potential within the subject property and evaluate whether additional archaeological work is required.
  - › Stage 2: Stage 2 archaeological resource assessments test those areas of archaeological potential identified during the Stage 1 assessment using sub-surface or pedestrian surveys.
  - › Stage 3: Stage 3 site-specific assessments aim to determine the physical characteristics of an archaeological site and to evaluate its relative cultural heritage value or interest.
  - › Stage 4: Stage 4 site-specific assessments generally involve mitigation through excavation, or avoidance and protection, if recommended.

# History of Work on the Property



# History of Work on the Property





# Sites without Cultural Heritage Value or Interest (CHVI)

- Rocky Narrows 1
- Weeduck Cabin Site
- Bagsverd Creek 2
- Makwa Point
- Clam Lake Gold Mining Company 1, 2 & 3
- Large Pit Mine Site
- Chester 4 & 6





# Sites Which Have Been Mitigated

- Côté Lake 1 & 2
- Two Pike Point
- Flat Rock Site
- Rocky Narrows 2
- Shannon Cabin
- Chester 1, 2, 3, & 5





# Sites Which Have Continued CHVI and are Protected Through Passive Protection Measures

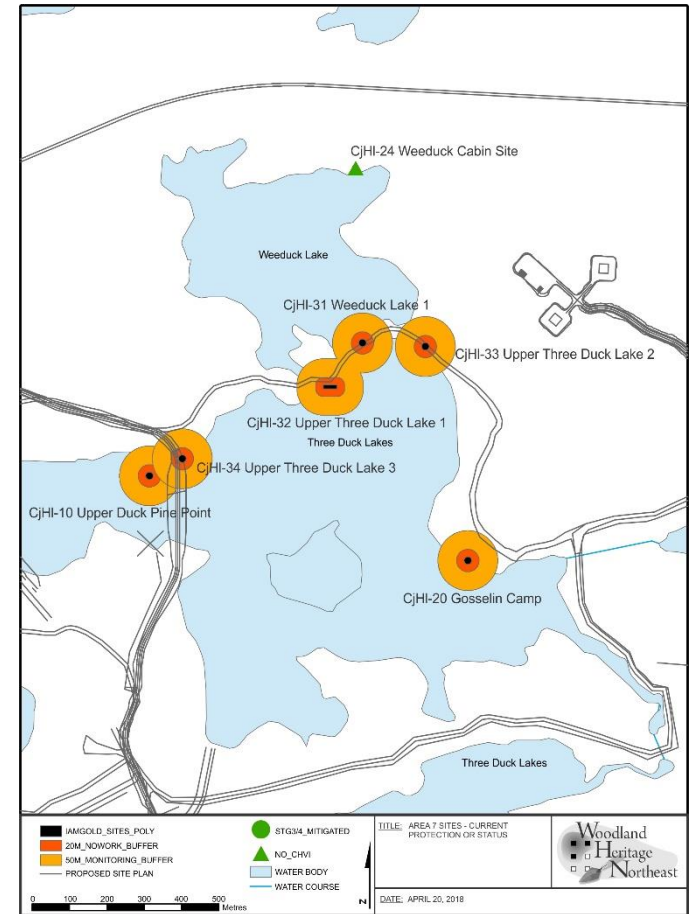
- Bagsverd Creek 1, 3 & 4
- Table Point Site
- Rocky Island Campsite
- Cryderman Camp 1 and 2
- Headframe Point
- Sheppard Prospect Cabins
- Gosselin Camp





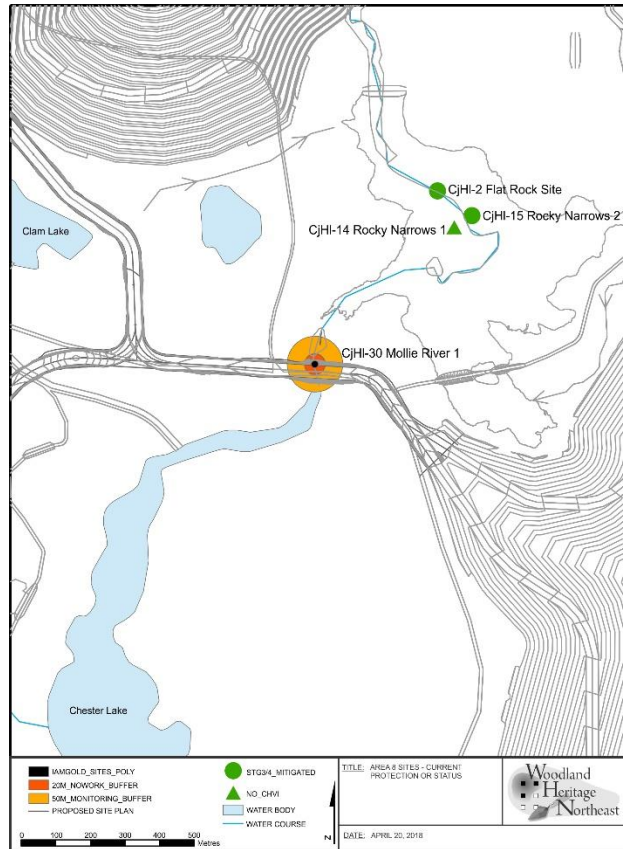
# Sites Requiring More Work

## Upper Duck Pine Point



# Sites Requiring More Work

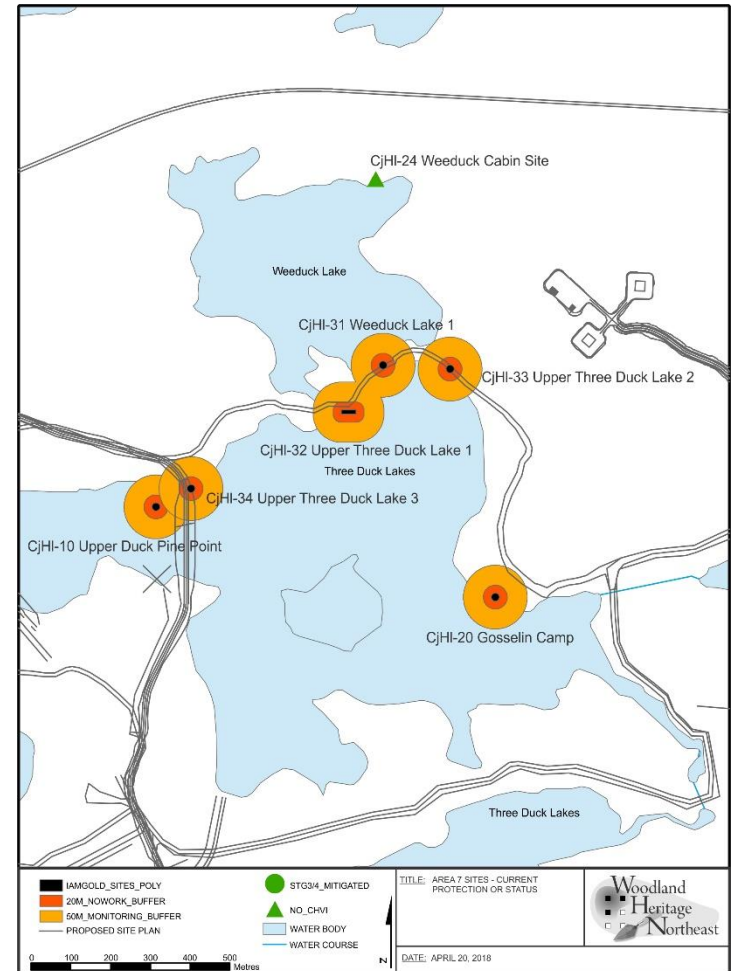
## Mollie River 1





# Sites Requiring More Work

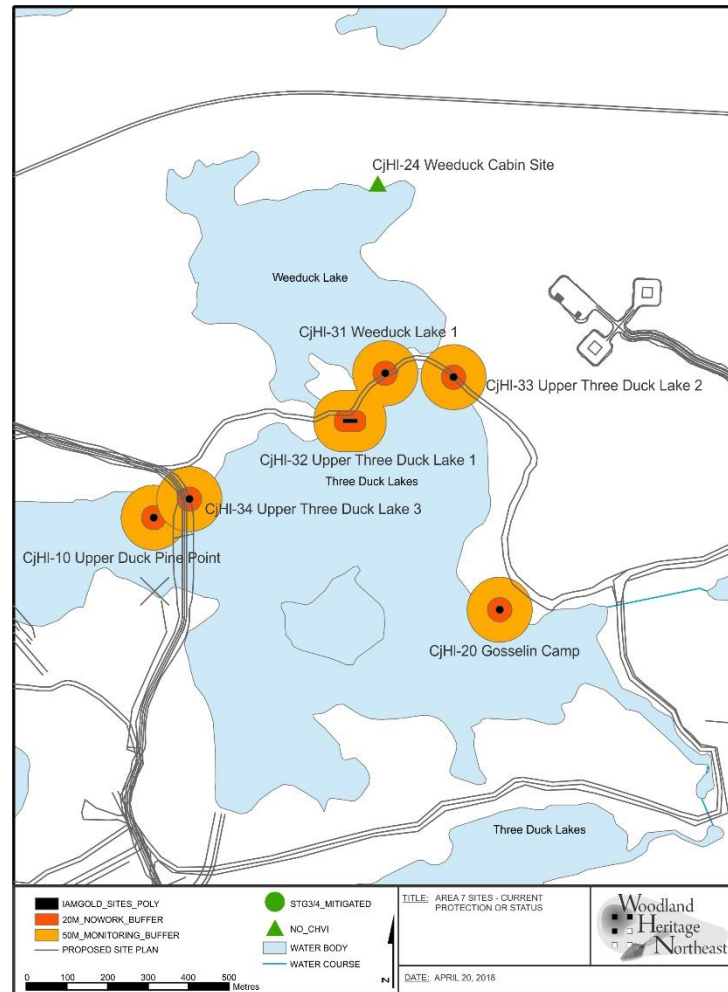
## Weeduck Lake 1





# Sites Requiring More Work

## Upper Three Duck Lake 1, 2 & 3





# What We Learned about the Mining History of the Property

- Structures and complexes (camps).
- Evidence of exploration - shafts, pits, middens and trenches.
- Post-contact artifacts, tools and features.



# What We Learned about Pre-contact Settlement of the Area

- Stone tools including: various bifacial and unifacial tools (projectile points, knives, chisels, or drills), scrapers, projectile points, cores, ground stone tools, chert, debitage, etc.
- Bone, kaolin pipe fragments and native pottery fragments.

CjHI-11: 151



CjHI-4: 57



CjHI-7: 45



CjHI-5: 162



CjHI-7: 16





# Questions?

1. Which Open House did you attend?

☐ Timmins

(February 13, 2018)

☐ Gogama

(February 14, 2018)

☒ Sudbury

(February 15, 2018)

2. What are your questions or comments related to the updates to the Côté Gold Project?

AS A neighbour to the north of project approx  
 12 kms away on Schist Lake, road traffic  
 and condition of Chester road is a concern.

3. What are your comments or concerns about the potential effects of the Côté Gold Project on the physical environment (e.g., air quality, noise, water quality) features?

Noise is a factor for wildlife. I Am sure water  
 quality will be monitored by all appropriate  
 agencies.

4. What are your comments or concerns about the potential effects of the Côté Gold Project on the human environment (e.g., land use, communities, the economy) features?

Economy will no doubt be a benefit in all aspects  
 of the project. land use for us may be a  
 concern as to equipment and traffic (dust, road  
 condition etc)

5. Would you like to be provided with any other information about the Côté Gold Project?

Any and all information on the project is always  
 welcomed.

6. What are your comments or concerns about the changes presented potential effects of the Côté Gold Project on the biological environment (e.g., wildlife, fish) features?

As in any project of this size there will be  
 displacement of wildlife and aquatic life.  
 this will no doubt be monitored by proper  
 authorities.

7. Do you have any information that might be relevant for the proposed Project/Project area?

Many are local and tourist Fishers use the area in spring and fall. No doubt there will be disruptions and cottagers and hoppers will not be too pleased. As the project is laid out it does not affect me too much except for main road.

8. Are there other people or stakeholders that you believe would be interested in the Côté Gold Project?

☐ Yes (who? \_\_\_\_\_) ☒ No

9. How would you like to receive future information about the Côté Gold Project?

☐ Open Houses ☒ Website ☒ News Media  
☒ Direct Mail ☒ Email ☐ In-person discussions with IAMGOLD representatives  
☐ Other: \_\_\_\_\_

Optional Contact Information (please print)

[Redacted contact information]

Thank you for your input!

Completed forms can be left with a member of our team or faxed/mailed by March 15, 2018 to:

IAMGOLD Corporation – Côté Gold Project  
3 Mesomikenda Lake Road, P.O. Box 100, Gogama, ON P0M 1W0  
E-mail: [cotegold@iamgold.com](mailto:cotegold@iamgold.com); Fax: (705) 269-1199

Information will be collected and used in accordance with the Environmental Assessment Act, and solely for the purpose of assisting the IAMGOLD Corporation in meeting environmental assessment and approval requirements. This material will be maintained on file for use during the study and may be included in Project documentation. **All comments will become part of the public record.** Personal information is protected under authority of the Freedom of Information and Protection of Privacy Act, Section 32, and is used solely for the purpose of completing this environmental assessment. Individuals will not be identified in any public documents or used for any purpose other than this Project.



1. Which Open House did you attend?

☐ Timmins

(February 13, 2018)

☐ Gogama

(February 14, 2018)

☒ Sudbury

(February 15, 2018)

2. What are your questions or comments related to the updates to the Côté Gold Project?

*Just looking for General information today.*

3. What are your comments or concerns about the potential effects of the Côté Gold Project on the physical environment (e.g., air quality, noise, water quality) features?

*No major concerns*

4. What are your comments or concerns about the potential effects of the Côté Gold Project on the human environment (e.g., land use, communities, the economy) features?

5. Would you like to be provided with any other information about the Côté Gold Project?

*Yes, I would like to keep up to date on progress*

6. What are your comments or concerns about the changes presented potential effects of the Côté Gold Project on the biological environment (e.g., wildlife, fish) features?

7. Do you have any information that might be relevant for the proposed Project/Project area?

---

---

---

---

---

8. Are there other people or stakeholders that you believe would be interested in the Côté Gold Project?

☐ Yes (who? \_\_\_\_\_) ☒ No

9. How would you like to receive future information about the Côté Gold Project?

☐ Open Houses      ☐ Website      ☐ News Media  
☐ Direct Mail      ☒ Email      ☐ In-person discussions with IAMGOLD representatives  
☐ Other: \_\_\_\_\_

**Optional Contact Information (please print)**

*Thank you for your input!*

**Completed forms can be left with a member of our team or faxed/mailed by March 15, 2018 to:**

IAMGOLD Corporation – Côté Gold Project  
3 Mesomikenda Lake Road, P.O. Box 100, Gogama, ON P0M 1W0  
E-mail: [cotegold@iamgold.com](mailto:cotegold@iamgold.com); Fax: (705) 269-1199

*Information will be collected and used in accordance with the Environmental Assessment Act, and solely for the purpose of assisting the IAMGOLD Corporation in meeting environmental assessment and approval requirements. This material will be maintained on file for use during the study and may be included in Project documentation. **All comments will become part of the public record.** Personal information is protected under authority of the Freedom of Information and Protection of Privacy Act, Section 32, and is used solely for the purpose of completing this environmental assessment. Individuals will not be identified in any public documents or used for any purpose other than this Project.*

1. Which Open House did you attend?

☐ Timmins

(February 13, 2018)

☐ Gogama

(February 14, 2018)

☒ Sudbury

(February 15, 2018)

2. What are your questions or comments related to the updates to the Côté Gold Project?

*my questions were largely around present stages  
in preparation for construction and these  
questions were answered at the present item*

3. What are your comments or concerns about the potential effects of the Côté Gold Project on the physical environment (e.g., air quality, noise, water quality) features?

*this is always a concern about the effects  
of a mill and mine on the environment  
but I feel mine management greatly  
improved*

4. What are your comments or concerns about the potential effects of the Côté Gold Project on the human environment (e.g., land use, communities, the economy) features?

*None*

5. Would you like to be provided with any other information about the Côté Gold Project?

*As it becomes available - Progress updates*

6. What are your comments or concerns about the changes presented potential effects of the Côté Gold Project on the biological environment (e.g., wildlife, fish) features?

*No concerns.*



7. Do you have any information that might be relevant for the proposed Project/Project area?

NO

---

---

---

---

---

8. Are there other people or stakeholders that you believe would be interested in the Côté Gold Project?

☐ Yes (who? \_\_\_\_\_) ☒ No

9. How would you like to receive future information about the Côté Gold Project?

☐ Open Houses      ☐ Website      ☐ News Media  
☐ Direct Mail      ☒ Email      ☐ In-person discussions with IAMGOLD representatives  
☐ Other: \_\_\_\_\_

Optional Contact Information (please print)

[Redacted area]

*Thank you for your input!*

**Completed forms can be left with a member of our team or faxed/mailed by March 15, 2018 to:**

IAMGOLD Corporation – Côté Gold Project  
3 Mesomikenda Lake Road, P.O. Box 100, Gogama, ON P0M 1W0  
E-mail: [cotegold@iamgold.com](mailto:cotegold@iamgold.com); Fax: (705) 269-1199

*Information will be collected and used in accordance with the Environmental Assessment Act, and solely for the purpose of assisting the IAMGOLD Corporation in meeting environmental assessment and approval requirements. This material will be maintained on file for use during the study and may be included in Project documentation. **All comments will become part of the public record.** Personal information is protected under authority of the Freedom of Information and Protection of Privacy Act, Section 32, and is used solely for the purpose of completing this environmental assessment. Individuals will not be identified in any public documents or used for any purpose other than this Project.*

1. Which Open House did you attend?

☐ Timmins

(February 13, 2018)

☐ Gogama

(February 14, 2018)

☒ Sudbury

(February 15, 2018)

2. What are your questions or comments related to the updates to the Côté Gold Project?

For the hiring process will a certain  
amount be hired from First Nation  
Percentage  
COMMUNITIES?

3. What are your comments or concerns about the potential effects of the Côté Gold Project on the physical environment (e.g., air quality, noise, water quality) features?

With How often will water and air  
quality be measured?

4. What are your comments or concerns about the potential effects of the Côté Gold Project on the human environment (e.g., land use, communities, the economy) features?

~~Just~~ I worry about the effects  
on the environment - although more  
stricter guidelines, I just hope they are  
followed.

5. Would you like to be provided with any other information about the Côté Gold Project?

Yes

6. What are your comments or concerns about the changes presented potential effects of the Côté Gold Project on the biological environment (e.g., wildlife, fish) features?

This is an area where we hunt, fish, pick medicines

7. Do you have any information that might be relevant for the proposed Project/Project area?

---

---

---

---

---

8. Are there other people or stakeholders that you believe would be interested in the Côté Gold Project?

☐ Yes (who? DUNAS) ☐ No

9. How would you like to receive future information about the Côté Gold Project?

- ☒ Open Houses ☐ Website ☐ News Media  
☐ Direct Mail ☒ Email ☐ In-person discussions with IAMGOLD representatives  
☐ Other: \_\_\_\_\_

Optional Contact Information (please print)

*Thank you for your input!*

**Completed forms can be left with a member of our team or faxed/mailed by March 15, 2018 to:**

IAMGOLD Corporation – Côté Gold Project  
3 Mesomikenda Lake Road, P.O. Box 100, Gogama, ON P0M 1W0  
E-mail: [cotegold@iamgold.com](mailto:cotegold@iamgold.com); Fax: (705) 269-1199

*Information will be collected and used in accordance with the Environmental Assessment Act, and solely for the purpose of assisting the IAMGOLD Corporation in meeting environmental assessment and approval requirements. This material will be maintained on file for use during the study and may be included in Project documentation. **All comments will become part of the public record.** Personal information is protected under authority of the Freedom of Information and Protection of Privacy Act, Section 32, and is used solely for the purpose of completing this environmental assessment. Individuals will not be identified in any public documents or used for any purpose other than this Project.*



1. Which Open House did you attend?

☐ Timmins

(February 13, 2018)

☒ Gogama

(February 14, 2018)

☐ Sudbury

(February 15, 2018)

2. What are your questions or comments related to the updates to the Côté Gold Project?

YOUR UPDATES SEEM TO HAVE BEEN WELL  
PLANNED AND SHOULD BE EFFICIENT AND  
MONEY SAVING.

3. What are your comments or concerns about the potential effects of the Côté Gold Project on the physical environment (e.g., air quality, noise, water quality) features?

I THINK THAT YOU PEOPLE HAVE DONE YOUR  
HOMEWORK AND IT LOOKS VERY GOOD

4. What are your comments or concerns about the potential effects of the Côté Gold Project on the human environment (e.g., land use, communities, the economy) features?

YOU SEEM TO HAVE TAKEN CARE OF THIS  
ISSUE

5. Would you like to be provided with any other information about the Côté Gold Project?

YES - ICD IMPORTERS INC - 7 TEMPERANCE ST  
BOX 686, COPPER CLIFF, ONTARIO  
POMINO

6. What are your comments or concerns about the changes presented potential effects of the Côté Gold Project on the biological environment (e.g., wildlife, fish) features?

I AM SURE YOU WILL ADDRESS ALL CONCERNS  
ON THIS SUBJECT.

7. Do you have any information that might be relevant for the proposed Project/Project area?

---

---

---

---

---

8. Are there other people or stakeholders that you believe would be interested in the Côté Gold Project?

☐ Yes (who? \_\_\_\_\_) ☐ No

9. How would you like to receive future information about the Côté Gold Project?

☐ Open Houses      ☐ Website      ☐ News Media  
☐ Direct Mail      ☐ Email      ☐ In-person discussions with IAMGOLD representatives  
☐ Other: \_\_\_\_\_

**Optional Contact Information (please print)**

Name: \_\_\_\_\_

Street Address: \_\_\_\_\_

Town/City: \_\_\_\_\_ Postal Code: \_\_\_\_\_

Email: \_\_\_\_\_ Phone: \_\_\_\_\_

Organization or Affiliation (if applicable): \_\_\_\_\_

*Thank you for your input!*

**Completed forms can be left with a member of our team or faxed/mailed by March 15, 2018 to:**

IAMGOLD Corporation – Côté Gold Project  
3 Mesomikenda Lake Road, P.O. Box 100, Gogama, ON P0M 1W0  
E-mail: [cotegold@iamgold.com](mailto:cotegold@iamgold.com); Fax: (705) 269-1199

*Information will be collected and used in accordance with the Environmental Assessment Act, and solely for the purpose of assisting the IAMGOLD Corporation in meeting environmental assessment and approval requirements. This material will be maintained on file for use during the study and may be included in Project documentation. **All comments will become part of the public record.** Personal information is protected under authority of the Freedom of Information and Protection of Privacy Act, Section 32, and is used solely for the purpose of completing this environmental assessment. Individuals will not be identified in any public documents or used for any purpose other than this Project.*

1. Which Open House did you attend?

☐ Timmins

(February 13, 2018)

☒ Gogama

(February 14, 2018)

☐ Sudbury

(February 15, 2018)

2. What are your questions or comments related to the updates to the Côté Gold Project?

GOOD TO HEAR THE OPERATIONS COULD  
START THE CONSTRUCTION PHASE IN  
EARLY 2019.

3. What are your comments or concerns about the potential effects of the Côté Gold Project on the physical environment (e.g., air quality, noise, water quality) features?

I FEEL THAT THESE CONCERNS HAVE BEEN  
WELL ADDRESSED.

4. What are your comments or concerns about the potential effects of the Côté Gold Project on the human environment (e.g., land use, communities, the economy) features?

FUTURE OPERATIONS WILL HELP BUILD/IMPROVE  
LIFE IN GOGAMA THRU INCREASED  
EMPLOYMENT AND AVAILABLE BUSINESS  
OPPORTUNITIES.

5. Would you like to be provided with any other information about the Côté Gold Project?

NO. I ATTEND THE OPEN HOUSES.

6. What are your comments or concerns about the changes presented potential effects of the Côté Gold Project on the biological environment (e.g., wildlife, fish) features?

I LIKE THE REDUCED PIT SIZE. ~~AND~~



7. Do you have any information that might be relevant for the proposed Project/Project area?

No.

8. Are there other people or stakeholders that you believe would be interested in the Côté Gold Project?

☐ Yes (who? \_\_\_\_\_) ☒ No

9. How would you like to receive future information about the Côté Gold Project?

- ☒ Open Houses      ☐ Website      ☐ News Media  
☐ Direct Mail      ☐ Email      ☐ In-person discussions with IAMGOLD representatives  
☐ Other: \_\_\_\_\_

Optional Contact Information (please print)

*Thank you for your input!*

**Completed forms can be left with a member of our team or faxed/mailed by March 15, 2018 to:**

IAMGOLD Corporation – Côté Gold Project  
3 Mesomikenda Lake Road, P.O. Box 100, Gogama, ON P0M 1W0  
E-mail: [cotegold@iamgold.com](mailto:cotegold@iamgold.com); Fax: (705) 269-1199

*Information will be collected and used in accordance with the Environmental Assessment Act, and solely for the purpose of assisting the IAMGOLD Corporation in meeting environmental assessment and approval requirements. This material will be maintained on file for use during the study and may be included in Project documentation. **All comments will become part of the public record.** Personal information is protected under authority of the Freedom of Information and Protection of Privacy Act, Section 32, and is used solely for the purpose of completing this environmental assessment. Individuals will not be identified in any public documents or used for any purpose other than this Project.*

1. Which Open House did you attend?

☐ Timmins

(February 13, 2018)

☒ Gogama

(February 14, 2018)

☐ Sudbury

(February 15, 2018)

2. What are your questions or comments related to the updates to the Côté Gold Project?

Happy with solutions to our  
previous concerns.

3. What are your comments or concerns about the potential effects of the Côté Gold Project on the physical environment (e.g., air quality, noise, water quality) features?

None.

4. What are your comments or concerns about the potential effects of the Côté Gold Project on the human environment (e.g., land use, communities, the economy) features?

Expecting positive effects.

5. Would you like to be provided with any other information about the Côté Gold Project?

Not at this time

6. What are your comments or concerns about the changes presented potential effects of the Côté Gold Project on the biological environment (e.g., wildlife, fish) features?

No concerns

7. Do you have any information that might be relevant for the proposed Project/Project area?

No.

---

---

---

---

8. Are there other people or stakeholders that you believe would be interested in the Côté Gold Project?

☐ Yes (who? \_\_\_\_\_) ☐ No

9. How would you like to receive future information about the Côté Gold Project?

- ☒ Open Houses ☐ Website ☐ News Media  
☒ Direct Mail ☒ Email ☐ In-person discussions with IAMGOLD representatives  
☐ Other: \_\_\_\_\_

Optional Contact Information (please print)

*Thank you for your input!*

**Completed forms can be left with a member of our team or faxed/mailed by March 15, 2018 to:**

IAMGOLD Corporation – Côté Gold Project  
3 Mesomikenda Lake Road, P.O. Box 100, Gogama, ON P0M 1W0  
E-mail: [cotegold@iamgold.com](mailto:cotegold@iamgold.com); Fax: (705) 269-1199

*Information will be collected and used in accordance with the Environmental Assessment Act, and solely for the purpose of assisting the IAMGOLD Corporation in meeting environmental assessment and approval requirements. This material will be maintained on file for use during the study and may be included in Project documentation. **All comments will become part of the public record.** Personal information is protected under authority of the Freedom of Information and Protection of Privacy Act, Section 32, and is used solely for the purpose of completing this environmental assessment. Individuals will not be identified in any public documents or used for any purpose other than this Project.*



1. Which Open House did you attend?

☐ Timmins

(February 13, 2018)

☒ Gogama

(February 14, 2018)

☐ Sudbury

(February 15, 2018)

2. What are your questions or comments related to the updates to the Côté Gold Project?

*All my questions were answered by damgold reps.  
 - Community liaison, employment opportunities, ~~comm~~  
 damgold updates to communities, etc.*

3. What are your comments or concerns about the potential effects of the Côté Gold Project on the physical environment (e.g., air quality, noise, water quality) features?

*I believe that damgold has taken the necessary steps  
 to ensure that any potential effect is taken care of.  
 There is always the chance of effects but so far damgold  
 have given me a level of comfort.*

4. What are your comments or concerns about the potential effects of the Côté Gold Project on the human environment (e.g., land use, communities, the economy) features?

*Right now, I see positive effects re employment  
 opportunities for my community and northern  
 Ontario & Area*

5. Would you like to be provided with any other information about the Côté Gold Project?

*Yes, ongoing updates*

6. What are your comments or concerns about the changes presented potential effects of the Côté Gold Project on the biological environment (e.g., wildlife, fish) features?

*At this time, I'm comfortable with what is being  
 done.*

7. Do you have any information that might be relevant for the proposed Project/Project area?

*I am willing & able to provide any information to IAMGOLD on an as needed basis. I am a life long resident of my community & have served on pretty well all committees in my community.*

8. Are there other people or stakeholders that you believe would be interested in the Côté Gold Project?

☒ Yes (who? FOR NORTHEAST TRAINING BOARD  
BASED IN HEARST.)

☐ No

9. How would you like to receive future information about the Côté Gold Project?

☐ Open Houses

☐ Website

☐ News Media

☐ Direct Mail

☒ Email

☐ In-person discussions with IAMGOLD representatives

Thank you for your input!

Completed forms can be left with a member of our team or faxed/mailed by March 15, 2018 to:

IAMGOLD Corporation – Côté Gold Project  
3 Mesomikenda Lake Road, P.O. Box 100, Gogama, ON P0M 1W0  
E-mail: [cotegold@iamgold.com](mailto:cotegold@iamgold.com); Fax: (705) 269-1199

Information will be collected and used in accordance with the Environmental Assessment Act, and solely for the purpose of assisting the IAMGOLD Corporation in meeting environmental assessment and approval requirements. This material will be maintained on file for use during the study and may be included in Project documentation. **All comments will become part of the public record.** Personal information is protected under authority of the Freedom of Information and Protection of Privacy Act, Section 32, and is used solely for the purpose of completing this environmental assessment. Individuals will not be identified in any public documents or used for any purpose other than this Project.

1. Which Open House did you attend?

☒ Timmins

(February 13, 2018)

☐ Gogama

(February 14, 2018)

☐ Sudbury

(February 15, 2018)

2. What are your questions or comments related to the updates to the Côté Gold Project?

*How many native organizations did you have to deal with?*

3. What are your comments or concerns about the potential effects of the Côté Gold Project on the physical environment (e.g., air quality, noise, water quality) features?

*None - I see good paying jobs & minimum environmental affect*

4. What are your comments or concerns about the potential effects of the Côté Gold Project on the human environment (e.g., land use, communities, the economy) features?

*None - Prosperity*

5. Would you like to be provided with any other information about the Côté Gold Project?

*No*

6. What are your comments or concerns about the changes presented potential effects of the Côté Gold Project on the biological environment (e.g., wildlife, fish) features?

*None*



7. Do you have any information that might be relevant for the proposed Project/Project area?

Make sure your grades and drainage requirements  
are under control

8. Are there other people or stakeholders that you believe would be interested in the Côté Gold Project?

☐ Yes (who? \_\_\_\_\_) ☒ No

9. How would you like to receive future information about the Côté Gold Project?

☒ Open Houses ☐ Website ☐ News Media  
☐ Direct Mail ☐ Email ☐ In-person discussions with IAMGOLD representatives  
☐ Other: \_\_\_\_\_

Optional Contact Information (please print)

Thank you for your input!

Completed forms can be left with a member of our team or faxed/mailed by March 15, 2018 to:

IAMGOLD Corporation – Côté Gold Project  
3 Mesomikenda Lake Road, P.O. Box 100, Gogama, ON P0M 1W0  
E-mail: [cotegold@iamgold.com](mailto:cotegold@iamgold.com); Fax: (705) 269-1199

Information will be collected and used in accordance with the Environmental Assessment Act, and solely for the purpose of assisting the IAMGOLD Corporation in meeting environmental assessment and approval requirements. This material will be maintained on file for use during the study and may be included in Project documentation. **All comments will become part of the public record.** Personal information is protected under authority of the Freedom of Information and Protection of Privacy Act, Section 32, and is used solely for the purpose of completing this environmental assessment. Individuals will not be identified in any public documents or used for any purpose other than this Project.

1. Which Open House did you attend?

☒ Timmins

(February 13, 2018)

☐ Gogama

(February 14, 2018)

☐ Sudbury

(February 15, 2018)

2. What are your questions or comments related to the updates to the Côté Gold Project?

---

---

---

---

3. What are your comments or concerns about the potential effects of the Côté Gold Project on the physical environment (e.g., air quality, noise, water quality) features?

---

---

---

---

4. What are your comments or concerns about the potential effects of the Côté Gold Project on the human environment (e.g., land use, communities, the economy) features?

---

---

---

---

5. Would you like to be provided with any other information about the Côté Gold Project?

*Pre-qualification package for Contractor  
 (CMS Mechanical & RLP Machine and steel) to  
 be considered for construction / maintenance  
 activities / requirements. Site Services, Maintenance, steel  
 fabrication.*

6. What are your comments or concerns about the changes presented potential effects of the Côté Gold Project on the biological environment (e.g., wildlife, fish) features?

---

---

---

---

7. Do you have any information that might be relevant for the proposed Project/Project area?

Extensive previous experience with  
site service contracts for start-up  
mining operations / Projects

ie.) DeBeers Gold - DeBeers Lake Mine

De Beers Canada - Victor Mine Goldcorp - Musselwhite

8. Are there other people or stakeholders that you believe would be interested in the Côté Gold Project? *Mine*

☐ Yes (who? \_\_\_\_\_)

☐ No

9. How would you like to receive future information about the Côté Gold Project?

☐ Open Houses

☐ Website

☐ News Media

☐ Direct Mail

☒ Email

☒ In-person discussions with IAMGOLD representatives

☐ Other: \_\_\_\_\_

Optional Contact Information (please print)

Thank you for your input!

Completed forms can be left with a member of our team or faxed/mailed by March 15, 2018 to:

IAMGOLD Corporation – Côté Gold Project

3 Mesomikenda Lake Road, P.O. Box 100, Gogama, ON P0M 1W0

E-mail: [cotegold@iamgold.com](mailto:cotegold@iamgold.com); Fax: (705) 269-1199

Information will be collected and used in accordance with the Environmental Assessment Act, and solely for the purpose of assisting the IAMGOLD Corporation in meeting environmental assessment and approval requirements. This material will be maintained on file for use during the study and may be included in Project documentation. **All comments will become part of the public record.** Personal information is protected under authority of the Freedom of Information and Protection of Privacy Act, Section 32, and is used solely for the purpose of completing this environmental assessment. Individuals will not be identified in any public documents or used for any purpose other than this Project.



1. Which Open House did you attend?

☒ Timmins

(February 13, 2018)

☐ Gogama

(February 14, 2018)

☐ Sudbury

(February 15, 2018)

2. What are your questions or comments related to the updates to the Côté Gold Project?

jobs created  
 redesign of project

3. What are your comments or concerns about the potential effects of the Côté Gold Project on the physical environment (e.g., air quality, noise, water quality) features?

Water Quality + Traffic impact on Highway

4. What are your comments or concerns about the potential effects of the Côté Gold Project on the human environment (e.g., land use, communities, the economy) features?

Traffic

5. Would you like to be provided with any other information about the Côté Gold Project?

yes frankgiorno1@gmail.com

6. What are your comments or concerns about the changes presented potential effects of the Côté Gold Project on the biological environment (e.g., wildlife, fish) features?

7. Do you have any information that might be relevant for the proposed Project/Project area?

---

---

---

---

---

8. Are there other people or stakeholders that you believe would be interested in the Côté Gold Project?

☐ Yes (who? \_\_\_\_\_) ☐ No

9. How would you like to receive future information about the Côté Gold Project?

- ☐ Open Houses      ☐ Website      ☐ News Media  
☐ Direct Mail      ☐ Email      ☐ In-person discussions with IAMGOLD representatives  
☐ Other: \_\_\_\_\_

**Optional Contact Information (please print)**

Name: \_\_\_\_\_

Street Address: \_\_\_\_\_

Town/City: \_\_\_\_\_ Postal Code: \_\_\_\_\_

Email: \_\_\_\_\_ Phone: \_\_\_\_\_

Organization or Affiliation (if applicable): \_\_\_\_\_

*Thank you for your input!*

**Completed forms can be left with a member of our team or faxed/mailed by March 15, 2018 to:**

IAMGOLD Corporation – Côté Gold Project  
3 Mesomikenda Lake Road, P.O. Box 100, Gogama, ON P0M 1W0  
E-mail: [cotegold@iamgold.com](mailto:cotegold@iamgold.com); Fax: (705) 269-1199

*Information will be collected and used in accordance with the Environmental Assessment Act, and solely for the purpose of assisting the IAMGOLD Corporation in meeting environmental assessment and approval requirements. This material will be maintained on file for use during the study and may be included in Project documentation. **All comments will become part of the public record.** Personal information is protected under authority of the Freedom of Information and Protection of Privacy Act, Section 32, and is used solely for the purpose of completing this environmental assessment. Individuals will not be identified in any public documents or used for any purpose other than this Project.*

**Côté Gold Project Open House  
Mattagami First Nation – May 28, 2018**

1. What are your questions or comments related to the updates to the Côté Gold Project?

---

---

---

---

2. Do you have any comments or questions about the Project's proposed use of the Shining Tree Transmission alignment?

---

---

---

---

3. Do you have any comments or questions about the Project's proposed Tailings Management Facility and Mine Rock Area?

---

---

---

---

4. Do you have any comments or questions about the Project's plans for Mine Closure? Do you have any suggestions about how the land could be restored once mining activities end?

Replant trees, picnic / camp ~~area~~ area, keep grounds maintained for future years.

5. Do you have any comments or questions about the proposed plans to offset fish habitat (new watercourses and new lake)?

---

---

---

---



6. Do you have any recommendations for how to properly house artifacts found at the archaeological sites?

House artifacts on Mattagami F.N., catalogue, display.  
Not to be displayed online. Respect.

7. Would you like to be provided with any other information about the Côté Gold Project?

Yes!

8. Are there other people or stakeholders that you believe would be interested in the Côté Gold Project?

☐ Yes (who? \_\_\_\_\_)

☐ No

9. How would you like to receive future information about the Côté Gold Project?

☒ Open Houses

☐ Website

☐ News Media

☐ Direct Mail

☐ Email

☐ In-person discussions with IAMGOLD representatives

☐ Other: \_\_\_\_\_

**Optional Contact Information (please print)**

Name: \_\_\_\_\_

Street Address: \_\_\_\_\_

Town/City: \_\_\_\_\_ Postal Code: \_\_\_\_\_

Email: \_\_\_\_\_ Phone: \_\_\_\_\_

Organization or Affiliation (if applicable): \_\_\_\_\_

*Thank you for your input!*

**Completed forms can be left with a member of our team or faxed/mailed by June 9, 2018 to:**

IAMGOLD Corporation – Côté Gold Project

3 Mesomikenda Lake Road, P.O. Box 100, Gogama, ON P0M 1W0

E-mail: [cotegold@iamgold.com](mailto:cotegold@iamgold.com); Fax: (705) 269-1199

*Information will be collected and used in accordance with the Environmental Assessment Act, and solely for the purpose of assisting the IAMGOLD Corporation in meeting environmental assessment and approval requirements. This material will be maintained on file for use during the study and may be included in Project documentation. All comments will become part of the public record. Personal information is protected under authority of the Freedom of Information and Protection of Privacy Act, Section 32, and is used solely for the purpose of completing this environmental assessment. Individuals will not be identified in any public documents or used for any purpose other than this Project.*

## CÔTÉ GOLD PROJECT OPEN HOUSE

☐ Gogama  
(June 13, 2018)

☒ Timmins  
(June 14, 2018)

☐ Sudbury  
(June 15, 2018)

1. What are your questions or comments related to the updates to the Côté Gold Project?

I'm pleased with the new plans compared to the original E.A. You have a greatly reduced impact planned for the area.

2. Do you have any comments or questions about the Project's proposed use of the Shining Tree Transmission alignment?

With a 115kV line @ 44 km compared to the original plan in the E.A. (which was approved,) the impact will be greatly reduced. Considering the proposed right of way is along an existing path, I'm sure approval will be granted.

3. Do you have any comments or questions about the Project's proposed Tailings Management Facility and Mine Rock Area?

NO.

4. Do you have any comments or questions about the Project's plans for Mine Closure? Do you have any suggestions about how the land could be restored once mining activities end?

I was surprised to hear how long the process would be — 25 to 30 years. My comments below show how pleased I am with this plan.

5. Do you have any comments or questions about the proposed plans to offset fish habitat (new watercourses and new lake)?

Any effects to fish and land habitat must be mitigated to a minimum effect. Allowing a long time period gives the wildlife (flora & fauna) a good chance to slowly adapt. Stressors will be kept to a minimum allowing nature to slowly take over.

7. Would you like to be provided with any other information about the Côté Gold Project?

SINCE DAY 1, IAMGOLD HAS BEEN SECOND TO NONE IN  
COMMUNICATIONS WITH ME. CONTACT HAS BEEN MAINLY BY  
EMAIL DIRECTING ME TO YOUR WEBSITE. PLEASE CONTINUE  
WITH THE GREAT WORK.

8. Are there other people or stakeholders that you believe would be interested in the Côté Gold Project?

☐ Yes (who? \_\_\_\_\_)

☒ No

9. How would you like to receive future information about the Côté Gold Project?

☒ Open Houses

☒ Website

☒ News Media

☐ Direct Mail

☒ Email

☐ In-person discussions with IAMGOLD representatives

☐ Other: \_\_\_\_\_

**Optional Contact Information (please print)**

*Thank you for your input!*

**Completed forms can be left with a member of our team or faxed/mailed by June 22, 2018 to:**

IAMGOLD Corporation – Côté Gold Project

3 Mesomikenda Lake Road, P.O. Box 100, Gogama, ON P0M 1W0

E-mail: [cotegold@iamgold.com](mailto:cotegold@iamgold.com); Fax: (705) 269-1199

*Information will be collected and used in accordance with the Environmental Assessment Act, and solely for the purpose of assisting the IAMGOLD Corporation in meeting environmental assessment and approval requirements. This material will be maintained on file for use during the study and may be included in Project documentation. **All comments will become part of the public record.** Personal information is protected under authority of the Freedom of Information and Protection of Privacy Act, Section 32, and is used solely for the purpose of completing this environmental assessment. Individuals will not be identified in any public documents or used for any purpose other than this Project.*

*OVERALL, I AM VERY PLEASED WITH YOUR PROPOSAL.*  
*GOOD JOB!*



## CÔTÉ GOLD PROJECT OPEN HOUSE

☐ Gogama  
(June 13, 2018)

☒ Timmins  
(June 14, 2018)

☐ Sudbury  
(June 15, 2018)

1. What are your questions or comments related to the updates to the Côté Gold Project?

- glad to see its still a go - best of luck +  
much more ore.

2. Do you have any comments or questions about the Project's proposed use of the Shining Tree Transmission alignment?

- can it be upgraded if new ore is found + an expanded mill is needed  
- cost savings? how much? i.e. for location, building maintenance etc.

3. Do you have any comments or questions about the Project's proposed Tailings Management Facility and Mine Rock Area?

- project management? by who, for how long?

4. Do you have any comments or questions about the Project's plans for Mine Closure? Do you have any suggestions about how the land could be restored once mining activities end?

- mine closure includes flooding (20-30 yrs) of the pit? Monitored the whole time? by who? Does the security deposits for mine closure cover this expense?

5. Do you have any comments or questions about the proposed plans to offset fish habitat (new watercourses and new lake)?

- when will the "new lake" be useable? Fish types?  
- new lake depth?

7. Would you like to be provided with any other information about the Côté Gold Project?

updates

---

---

---

---

8. Are there other people or stakeholders that you believe would be interested in the Côté Gold Project?

☐ Yes (who? \_\_\_\_\_)

☒ No

9. How would you like to receive future information about the Côté Gold Project?

☐ Open Houses

☐ Website

☐ News Media

☐ Direct Mail

☐ Email

☐ In-person discussions with IAMGOLD representatives

☐ Other: \_\_\_\_\_

**Optional Contact Information (please print)**

[Redacted contact information area]

*Thank you for your input!*

**Completed forms can be left with a member of our team or faxed/mailed by June 22, 2018 to:**

IAMGOLD Corporation – Côté Gold Project

3 Mesomikenda Lake Road, P.O. Box 100, Gogama, ON P0M 1W0

E-mail: [cotegold@iamgold.com](mailto:cotegold@iamgold.com); Fax: (705) 269-1199

*Information will be collected and used in accordance with the Environmental Assessment Act, and solely for the purpose of assisting the IAMGOLD Corporation in meeting environmental assessment and approval requirements. This material will be maintained on file for use during the study and may be included in Project documentation. **All comments will become part of the public record.** Personal information is protected under authority of the Freedom of Information and Protection of Privacy Act, Section 32, and is used solely for the purpose of completing this environmental assessment. Individuals will not be identified in any public documents or used for any purpose other than this Project.*

**CÔTÉ GOLD PROJECT OPEN HOUSE**

☐ Gogama  
(June 13, 2018)

☒ Timmins  
(June 14, 2018)

☐ Sudbury  
(June 15, 2018)

1. What are your questions or comments related to the updates to the Côté Gold Project?

---

---

---

---

2. Do you have any comments or questions about the Project's proposed use of the Shining Tree Transmission alignment?

---

---

---

---

3. Do you have any comments or questions about the Project's proposed Tailings Management Facility and Mine Rock Area?

---

---

---

---

4. Do you have any comments or questions about the Project's plans for Mine Closure? Do you have any suggestions about how the land could be restored once mining activities end?

---

---

---

---

5. Do you have any comments or questions about the proposed plans to offset fish habitat (new watercourses and new lake)?

---

---

---

---

---



7. Would you like to be provided with any other information about the Côté Gold Project?

Archaeology in particular

---

---

---

8. Are there other people or stakeholders that you believe would be interested in the Côté Gold Project?

☐ Yes (who? \_\_\_\_\_)

☐ No

9. How would you like to receive future information about the Côté Gold Project?

☐ Open Houses

☐ Website

☒ News Media

☐ Direct Mail

☒ Email

☐ In-person discussions with IAMGOLD representatives

☐ Other: \_\_\_\_\_

**Optional Contact Information (please print)**

[Redacted contact information]

*Thank you for your input!*

**Completed forms can be left with a member of our team or faxed/mailed by June 22, 2018 to:**

IAMGOLD Corporation – Côté Gold Project

3 Mesomikenda Lake Road, P.O. Box 100, Gogama, ON P0M 1W0

E-mail: [cotegold@iamgold.com](mailto:cotegold@iamgold.com); Fax: (705) 269-1199

*Information will be collected and used in accordance with the Environmental Assessment Act, and solely for the purpose of assisting the IAMGOLD Corporation in meeting environmental assessment and approval requirements. This material will be maintained on file for use during the study and may be included in Project documentation. **All comments will become part of the public record.** Personal information is protected under authority of the Freedom of Information and Protection of Privacy Act, Section 32, and is used solely for the purpose of completing this environmental assessment. Individuals will not be identified in any public documents or used for any purpose other than this Project.*

**CÔTÉ GOLD PROJECT OPEN HOUSE**☐ Gogama  
(June 13, 2018)☒ Timmins  
(June 14, 2018)☐ Sudbury  
(June 15, 2018)

1. What are your questions or comments related to the updates to the Côté Gold Project?

NO

2. Do you have any comments or questions about the Project's proposed use of the Shining Tree Transmission alignment?

NO

3. Do you have any comments or questions about the Project's proposed Tailings Management Facility and Mine Rock Area?

NO

4. Do you have any comments or questions about the Project's plans for Mine Closure? Do you have any suggestions about how the land could be restored once mining activities end?

NO

5. Do you have any comments or questions about the proposed plans to offset fish habitat (new watercourses and new lake)?

NO

7. Would you like to be provided with any other information about the Côté Gold Project?

NO

8. Are there other people or stakeholders that you believe would be interested in the Côté Gold Project?

☐ Yes (who? \_\_\_\_\_)

☒ No

9. How would you like to receive future information about the Côté Gold Project?

☐ Open Houses

☐ Website

☐ News Media

☐ Direct Mail

☒ Email

☐ In-person discussions with IAMGOLD representatives

☐ Other: \_\_\_\_\_

**Optional Contact Information (please print)**

*Thank you for your input!*

**Completed forms can be left with a member of our team or faxed/mailed by June 22, 2018 to:**

IAMGOLD Corporation – Côté Gold Project

3 Mesomikenda Lake Road, P.O. Box 100, Gogama, ON P0M 1W0

E-mail: [cotegold@iamgold.com](mailto:cotegold@iamgold.com); Fax: (705) 269-1199

*Information will be collected and used in accordance with the Environmental Assessment Act, and solely for the purpose of assisting the IAMGOLD Corporation in meeting environmental assessment and approval requirements. This material will be maintained on file for use during the study and may be included in Project documentation. **All comments will become part of the public record.** Personal information is protected under authority of the Freedom of Information and Protection of Privacy Act, Section 32, and is used solely for the purpose of completing this environmental assessment. Individuals will not be identified in any public documents or used for any purpose other than this Project.*

## CÔTÉ GOLD PROJECT OPEN HOUSE

☐ Gogama  
(June 13, 2018)

☐ Timmins  
(June 14, 2018)

☒ Sudbury  
(June 15, 2018)

1. What are your questions or comments related to the updates to the Côté Gold Project?

Good Job

2. Do you have any comments or questions about the Project's proposed use of the Shining Tree Transmission alignment?

3. Do you have any comments or questions about the Project's proposed Tailings Management Facility and Mine Rock Area?

4. Do you have any comments or questions about the Project's plans for Mine Closure? Do you have any suggestions about how the land could be restored once mining activities end?

KEEP A NEW LAKE

5. Do you have any comments or questions about the proposed plans to offset fish habitat (new watercourses and new lake)?



7. Would you like to be provided with any other information about the Côté Gold Project?

---

---

---

---

8. Are there other people or stakeholders that you believe would be interested in the Côté Gold Project?

☐ Yes (who? \_\_\_\_\_)

☐ No

9. How would you like to receive future information about the Côté Gold Project?

☐ Open Houses

☐ Website

☐ News Media

☐ Direct Mail

☒ Email

☐ In-person discussions with IAMGOLD representatives

☐ Other: \_\_\_\_\_

**Optional Contact Information (please print)**

Name: Bob Lester

Street Address: 219 Copper St.

Town/City: Seabury

Postal Code: P3E5Z2

Email: lestbob@yahoo.ca

Phone: 705-705-6755

Organization or Affiliation (if applicable): \_\_\_\_\_

*Thank you for your input!*

**Completed forms can be left with a member of our team or faxed/mailed by June 22, 2018 to:**

IAMGOLD Corporation – Côté Gold Project

3 Mesomikenda Lake Road, P.O. Box 100, Gogama, ON P0M 1W0

E-mail: [cotegold@iamgold.com](mailto:cotegold@iamgold.com); Fax: (705) 269-1199

*Information will be collected and used in accordance with the Environmental Assessment Act, and solely for the purpose of assisting the IAMGOLD Corporation in meeting environmental assessment and approval requirements. This material will be maintained on file for use during the study and may be included in Project documentation. **All comments will become part of the public record.** Personal information is protected under authority of the Freedom of Information and Protection of Privacy Act, Section 32, and is used solely for the purpose of completing this environmental assessment. Individuals will not be identified in any public documents or used for any purpose other than this Project.*

## CÔTÉ GOLD PROJECT OPEN HOUSE

☐ Gogama  
(June 13, 2018)

☐ Timmins  
(June 14, 2018)

☒ Sudbury  
(June 15, 2018)

1. What are your questions or comments related to the updates to the Côté Gold Project?

I AM not thrilled with new access road. From 400 Rd. ADDS distance to our camp. Will road be maintained? make the commute longer. It will also bring in more ~~more~~ curious onlookers.

2. Do you have any comments or questions about the Project's proposed use of the Shining Tree Transmission alignment?

I AM sure you have done the math and studies of environmental impact. and this is the best for you and environment.

3. Do you have any comments or questions about the Project's proposed Tailings Management Facility and Mine Rock Area?

I AM sure your tailings etc. will be checked or should be checked by M of Environment officials. IF not the locals will advise them.

4. Do you have any comments or questions about the Project's plans for Mine Closure? Do you have any suggestions about how the land could be restored once mining activities end?

IF project loses money is there money put aside to complete a proper closure? will we be apprised of any changes?

5. Do you have any comments or questions about the proposed plans to offset fish habitat (new watercourses and new lake)?

IF its done proper there will be no impact on fish habitat. I was aware of the Cote lake removal but not of any <sup>new</sup> watercourses. And or new lake.

7. Would you like to be provided with any other information about the Côté Gold Project?

Any and all new pertinent info will be appreciated. Since we own a property off of Chester at 17 1/2 kms in the new access road will be a pain. And we were the first

8. Are there other people or stakeholders that you believe would be interested in the Côté Gold Project?

☒ Yes (who? partnership Shurt Lake Corp.) ☐ No

9. How would you like to receive future information about the Côté Gold Project?

☐ Open Houses ☐ Website ☐ News Media  
☐ Direct Mail ☒ Email ☐ In-person discussions with IAMGOLD representatives  
☒ Other: we will contact. I am Gold. in event of problems.

Optional Contact Information (please print)

[Redacted area for optional contact information]

Thank you for your input!

Completed forms can be left with a member of our team or faxed/mailed by June 22, 2018 to:

IAMGOLD Corporation – Côté Gold Project  
3 Mesomikenda Lake Road, P.O. Box 100, Gogama, ON P0M 1W0  
E-mail: [cotegold@iamgold.com](mailto:cotegold@iamgold.com); Fax: (705) 269-1199

Information will be collected and used in accordance with the Environmental Assessment Act, and solely for the purpose of assisting the IAMGOLD Corporation in meeting environmental assessment and approval requirements. This material will be maintained on file for use during the study and may be included in Project documentation. **All comments will become part of the public record.** Personal information is protected under authority of the Freedom of Information and Protection of Privacy Act, Section 32, and is used solely for the purpose of completing this environmental assessment. Individuals will not be identified in any public documents or used for any purpose other than this Project.

## CÔTÉ GOLD PROJECT OPEN HOUSE

☐ Gogama  
(June 13, 2018)☐ Timmins  
(June 14, 2018)☒ Sudbury  
(June 15, 2018)

1. What are your questions or comments related to the updates to the Côté Gold Project?

Chester Road is access to schist Lake fifty year or more  
If chester is no longer available what kind of road  
and maintenance will be given.

2. Do you have any comments or questions about the Project's proposed use of the Shining Tree Transmission alignment?

3. Do you have any comments or questions about the Project's proposed Tailings Management Facility and Mine Rock Area?

4. Do you have any comments or questions about the Project's plans for Mine Closure? Do you have any suggestions about how the land could be restored once mining activities end?

Will the mine be cleaned up and put back as it was.

5. Do you have any comments or questions about the proposed plans to offset fish habitat (new watercourses and new lake)?

as long as the fish + fishing are not affected



7. Would you like to be provided with any other information about the Côté Gold Project?

Don't know

8. Are there other people or stakeholders that you believe would be interested in the Côté Gold Project?

☐ Yes (who? \_\_\_\_\_)

☐ No

9. How would you like to receive future information about the Côté Gold Project?

☐ Open Houses

☐ Website

☐ News Media

☐ Direct Mail

☒ Email

☐ In-person discussions with IAMGOLD representatives

☐ Other: \_\_\_\_\_

**Optional Contact Information (please print)**

[Redacted contact information]

*Thank you for your input!*

**Completed forms can be left with a member of our team or faxed/mailed by June 22, 2018 to:**

IAMGOLD Corporation – Côté Gold Project

3 Mesomikenda Lake Road, P.O. Box 100, Gogama, ON P0M 1W0

E-mail: [cotegold@iamgold.com](mailto:cotegold@iamgold.com); Fax: (705) 269-1199

*Information will be collected and used in accordance with the Environmental Assessment Act, and solely for the purpose of assisting the IAMGOLD Corporation in meeting environmental assessment and approval requirements. This material will be maintained on file for use during the study and may be included in Project documentation. **All comments will become part of the public record.** Personal information is protected under authority of the Freedom of Information and Protection of Privacy Act, Section 32, and is used solely for the purpose of completing this environmental assessment. Individuals will not be identified in any public documents or used for any purpose other than this Project.*