

Let's Talk:

The Côté Gold Project Community Newsletter

Project Status Update

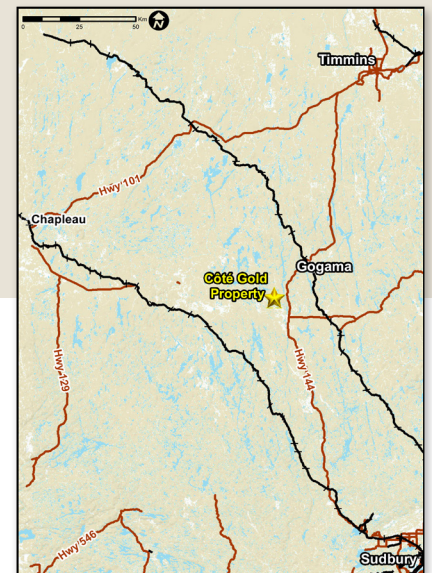
IAMGOLD extended the early work phase of the Côté Gold Project (the Project). We are focusing our efforts on advancing engineering and permitting activity, including our community engagement efforts. We continue to evaluate options for advancing the Project to development and will share updates as available.

In response to the COVID-19 pandemic, IAMGOLD and Wood PLC has been diligently working with, Contractors and the Ministry of Health to mitigate any risk to personnel at the Côté Gold Project Site and local communities.

Given the rapid evolving situation we are actively engaging with Contractors in mandating the following protocols and mitigating factors:

- Reducing all non-essential activities on site
- Reducing the number of personnel on site with focus on essential activities only
- Screening all employees prior to return to the Côté Gold Project Site
- Mandating hygiene protocols, including mandating frequent handwashing
- Implementing physical distancing measures such as creating two meal seating times and ensuring a 2-metre distance between patrons
- Working towards an "island" type Project site, with minimized contact with external workforce
- Mandating a no No-Fly protocol to all Project-based employees in Canada to mitigate transit through all airports.

As with other companies around the world, we will continue to monitor the situation and will instill any protocols required to protect the health, safety and wellbeing of all Employees, Contractors, Indigenous and local communities.



The Côté Gold Project (the Project) is a proposed open pit gold mine that is located approximately 20 km southwest of Gogama and 130 km southwest of Timmins. The Project is a joint venture between IAMGOLD and Sumitomo Metal Mining Co.

Staff Spotlight - Côté Gold Project Welcomes New Project Managers

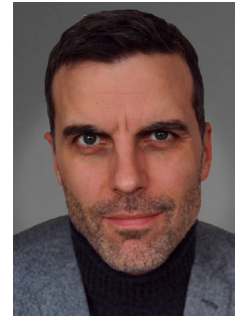
Luc-Bernard Denoncourt, Project Manager, Côté Gold

Since joining IAMGOLD as a Project Manager, Luc has been in charge of various projects and studies for numerous IAMGOLD sites (Rosebel, Essakane, Sadiola). He managed a plant expansion project at Rosebel and implemented a Project Management Office at Essakane for their large portfolio expenditure of the last years. Before joining IAMGOLD, Luc spent 10 years at SNC-Lavalin as a Project Manager. He is a mining engineer and is a certified Project Management Professional. He also holds a Master Certificate in Project Management from George Washington University.



Michel Payeur, Deputy Project Manager, Côté Gold

Michel is an energetic manager with 19 years of diversified mining experience from studies to operations, with a focus on operational strategy in mining and projects, commercial and business development and stakeholder management. Since joining IAMGOLD, Michel has been involved in managing operations and technical services at Essakane and Rosebel and worked at Westwood. He is a geological engineer, with a Master's degree in rock mechanics applied to open pit operations. Previously, Michel worked as a Project Manager in mining at both Golder and SNC-Lavalin.



Permitting Update

Before a mine can be constructed and operated, several permits are required. IAMGOLD started the permitting process in the Fall of 2018 and is continuing to develop various permit applications and submitting them to regulatory authorities.

Permits Received/Approved	Permits Submitted	Permits to be Developed/Submitted
Closure Plan Transmission Line <ul style="list-style-type: none"> Environmental Study Report Leave to Construct Ontario Energy Board – Decision and Order to Vary Environmental Effects Review – Federal decision statement updated Forestry Resource License <ul style="list-style-type: none"> Phase 1 Clearing (2019) Phase 2 Clearing (2020) 	Aggregate Permits – Category 9 and 12 Permits to Take Water <ul style="list-style-type: none"> Plant Site and other Construction Dewatering Clam Lake and Mollie River Realignment Domestic Water Open Pit Dewatering Lakes and Rivers Improvement Act <ul style="list-style-type: none"> Tailings Management Facility Starter Dams Haul/Access Road Mollie Realignment Environmental Compliance Approval <ul style="list-style-type: none"> Air and Noise Plant Site and other Construction Dewatering Metal and Diamond Mining Effluent Regulations – Schedule 2 Amendment Fisheries Act Authorization <ul style="list-style-type: none"> Fish Habitat Offsetting 	Environmental Compliance Approval <ul style="list-style-type: none"> Industrial Sewage Works and Domestic Sewage Treatment Lakes and Rivers Improvement Act <ul style="list-style-type: none"> Fish Habitat Offsetting Measures (Phase 1) Canadian Navigable Waters Act <ul style="list-style-type: none"> Major Works application for Clam Lake Dam #3 Weeduck Reconnection and Water Realignment Channels Major Works application for Polishing Pond East Dam Transmission Line Alignment

Showcasing Our Innovative Approach to Collaboration

During the environmental assessment phase of the Project, IAMGOLD committed to develop and implement a follow-up program to monitor changes on community social and economic conditions resulting from the Project. Building on a well-established and positive relationship with Mattagami First Nation and Flying Post First Nation, IAMGOLD proposed to co-develop a socio-economic management and monitoring plan with the two communities. Creating and implementing this plan in a collaborative way is a relatively new approach. IAMGOLD was fortunate to have the opportunity to highlight this effort at the annual

Prospectors and Developers Association of Canada Conference (PDAC) on March 1, 2020 as part of PDAC's Indigenous Program. The panel presentation offered an opportunity to share information about the collaboration from the perspectives of the various parties involved.

Approximately 150 to 200 people came to listen to the presentation delivered by Jennifer Constant

(Mattagami First Nation), Jeff Berube (Flying Post First Nation), Steve Crozier

(IAMGOLD), Christian Naponse (IAMGOLD, Côté

Gold Project) and Krista Maydew (Wood).



(l to r): Jeff Berube, Christian Naponse, Jennifer Constant, Krista Maydew, Stephen Crozier, Jonathan Fowler (session moderator). Photo credit: Dave Brown

IAMGOLD Supports Local Volunteer Fire Department

On February 19, 2020, IAMGOLD attended the unveiling of the Mattagami First Nation Fire Department's new service truck. IAMGOLD is proud to be one of the many contributors to the fundraising campaign to support the purchase of the new vehicle.



(l to r): Dorothy Naveau, Steven Bowles, Luc-Bernard Denoncourt, Curtis Fowler and Gerald Luke. Photo credit: Dorothy Naveau

Activity at the Project Site

Tree Clearing

In February and March of this year, IAMGOLD cleared approximately 400 hectares of forest as part of pre-construction activities.

Water Quality Monitoring

IAMGOLD is conducting pre-operational baseline monitoring for surface and groundwater. The program includes:

- monthly surface water sampling at 28 locations
- quarterly monitoring of flow and water levels, lake sampling (top and bottom) and groundwater levels
- bi-annual monitoring of groundwater quality.

This monitoring program was developed in consultation with community partners and the Ministry of the Environment, Conservation and Parks.



Photo credit: Minnow Environmental

The most recent sampling event took place in March 2020 when crews sampled the outlets of local lakes and various tributaries. The monitoring crew included Cole Clearwater, a member of Flying Post First Nation. Sampling was also conducted on 12 lakes through the ice, with water samples collected from the surface and bottom layer of the lakes.

Field measurements of temperature, dissolved oxygen, specific conductivity and pH were measured at all stations. Samples were submitted to a qualified laboratory for analysis of metals, nutrients, general chemistry, ions and mercury.



Cole Clearwater
Photo credit: IAMGOLD

Developing a Socio-economic Management and Monitoring Plan with Gogama

IAMGOLD will be working closely with a volunteer committee of interested local representatives to develop a socio-economic management and monitoring plan with Gogama. IAMGOLD is committed to working with Gogama to understand which social and economic conditions should be monitored while the Project is being constructed, operated and eventually closed. This will aid in understanding if and how the Project is changing community conditions, employment and business opportunities. Monitoring activities will allow for better management of potentially negative changes and enhancement of positive effects.

Biodiversity Survey

IAMGOLD is required to conduct regular monitoring of mammals and birds as part of the Biodiversity Monitoring Plan. IAMGOLD is also required to conduct a pre-construction biodiversity baseline that goes beyond baseline work developed during the Environmental Effects Review. This baseline program requires pre-construction aerial surveys for mammals with the focus on mapping the distribution and abundance of Moose, Deer, Wolves and other local fur bearers including Fox, Marten, Lynx, Otter, Beaver and any other species that may be locally important to communities for subsistence hunting and trapping, as well as raptor species. These surveys will also document the distribution of suitable habitat for these species, directly adjacent to the Project site and across control sites outside of the Project footprint.

Two aerial surveys were conducted this winter.

A helicopter is used for these surveys, flying at an air speed of approximately 75 to 100 kilometres per hour and at an elevation of approximately 50 to 75 metres.

Qualified observers sit on both sides of the aircraft and sightings of all mammals and their tracks in the snow are recorded.



Photo credit: Wood

Reporting

A report, including mapping, will be included in an Annual Monitoring Report as per the Project's Biodiversity Monitoring Plan.

Survey Team

Wood is the contractor conducting the surveys. The study team have been involved with the Project's wildlife studies, environmental assessments and Project permitting since 2013. They also conducted several aerial surveys at the Project site in 2013, 2014 and 2017.

Project-Related Employment Opportunities

The Project is expected to create over 1,000 Construction jobs and about 300-400 full time jobs during Operations. It will rely heavily on northern communities for skilled jobs and expertise and we look forward to working closely with Indigenous and local communities to ensure that this is truly a Northern Ontario project. Minimum age for employment is 18 years. There will be two hiring methods used for the Project – one for the construction phase through Wood and a second directly with IAMGOLD / Côté Gold for the operations phase. Below is information on these in more detail.

Once **Construction** begins, hiring will be done through our contractors. Wood is the Engineering, Procurement and Construction Manager (EPCM) for the Project and will have various jobs available leading up to and during Construction. Please check the Wood website woodplc.com/careers and enter “Gogama” as the keyword to search. The process for applying for any positions through Wood is outlined clearly on the Wood Careers webpage.

Côté Gold will begin hiring for **Operations** roles throughout the course of the construction phase with the majority of roles being posted within six months before Operations start-up. We encourage people who wish to work during Operations to also consider opportunities available during Construction. Some Construction roles may transition to Operations and will allow people to gain valuable work experience with the Project. Note: working during Construction for a contractor (Wood or others) will not limit someone from applying on future Operations positions. Please visit the IAMGOLD Career Opportunities website for current and future Project-related opportunities.

Project-Related Business Opportunities

If you are interested in providing services or supplies to the Project during Construction and Operations, please reach out to us at cotegold@iamgold.com and share information about your business's services.

Looking for more information about the Project?

Check out our website iamgold.com/cotegold for more information or follow these links to learn more about:

- Community engagement: www.iamgold.com/cotegold-community-engagement
- Permitting: www.iamgold.com/cotegold-permitting-applications
- Environmental assessments and Project approval conditions: www.iamgold.com/cotegold-environmental-assessments



For more information please contact us: cotegold@iamgold.com

Join our Project mailing list to be kept informed about the Project and any upcoming events by sending an email to: cotegold@iamgold.com

Ce document est également disponible en français.