

# Côté Community



PAGE 2

**Close watch  
on bird nests  
at Côté Gold**



PAGE 3

**Career  
opportunities  
at Côté Gold**



PAGE 4

**Construction  
progress at Côté Gold**



Deputy General Manager Mike Garbutt, Environment and Community Relations Manager Dave Brown, Flying Post First Nation Chief Murray Ray, Wood Area Construction Manager Derek Laurikainen and Côté Gold Construction Lead Alain Hebert with the new land acknowledgement sign.

## Traditional lands acknowledged with site entrance sign

On Monday June 21, a sign was erected at site to recognize that Côté Gold is located on the traditional lands of Mattagami First Nation and Flying Post First Nation.

The sign was developed in collaboration with the First Nations.

Flying Post First Nation Chief Murray Ray visited the site to view the new sign and tour construction progress.

The sign has been temporarily placed at the Chester site entrance, and will be relocated to the permanent main entrance once it is established.

### PROJECT UPDATES

#### Development of haul roads underway

Water realignment channels and dam construction have progressed and most of the water flow is now bypassing the future mine area through channels and pumping, in accordance with permitted plans. This allows construction work to advance.

Overburden removal and quarrying within the footprint of the open pit continues.

Development of haul roads is well underway. This allows for the use of larger equipment, and shorter hauls, over the coming months.

Updates continue on page 4

*Construction progress on Haul Road 4*







- ◀ Wildlife Biologists Dominique Courchesne and David Dunn monitoring for bird activity.
- ▼ This White Throated Sparrow was spotted by site biologists, who flagged the location and established a protective boundary.



## Close watch on bird nests at Côté Gold

The site environment team has been busy monitoring nest locations since the start of bird nesting season in April.

In preparation for this season, the site environmental team spent more than 1,000 hours placing bird deterrents around key locations at site. The site team has spent approximately 2,500 hours conducting ground nest sweeps and monitoring nest locations to lessen potential harm to birds and active nests.

Before starting work in any location, technicians conduct a nest sweep. If a nest is identified, species-specific management plans are created in consultation with the Ministry of Natural

Resources and Forestry. No-work buffers are established around each nest. Some bird nests require 10 metre buffers while others require multiple levels of buffers detailing what type of work can happen at specific distances from the nest.

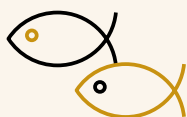
The area is protected and monitored for a period of time based on species requirements. There are four wildlife biologists at site who monitor nests daily.

When the birds have left the nest the barriers are removed and work continues.

Côté Gold consulted with Indigenous communities on the specific bird deterrents used in the polishing pond and Tailings Management Facility area. Items used include reflective panels, audible deterrents, kites and balloons.



## Fish relocation 2021



This year's fish relocation has started. Several barriers and culverts are installed and dewatering started on a number of water bodies. Fish relocation is complete at the East Beaver Pond and outlet, unnamed pond tributary and East

Clam Lake. Cofferdams are under construction and sheet pile dams are being built. Fish relocation started in August 2020 and will continue throughout construction in various locations across the Project site.



## Career opportunities at Côté Gold

People interested in working on the Côté Gold Project are encouraged to apply through Wood, the Engineering, Procurement and Construction Manager, and the individual contractors working on the Project.

Visit [woodplc.com/careers](http://woodplc.com/careers) and enter Gogama as the search keyword.

### Project contractors include (but are not limited to):

- Flying Post Camp and Logistics
- Caron Equipment
- G4S Secure Solutions
- Advanced Security
- Scott Steel Erectors
- Valard Construction LP
- Northeq Construction
- L. Fournier & Fils
- North American Construction Group
- Nuna Logistics
- Tisdale Bus Lines
- Tulloch Group

- DST Consulting Engineers
- REMSI
- Minnow Environmental
- Waggs Petroleum
- Haztech
- Canadian Shield
- Spectrum
- Paladin Technologies

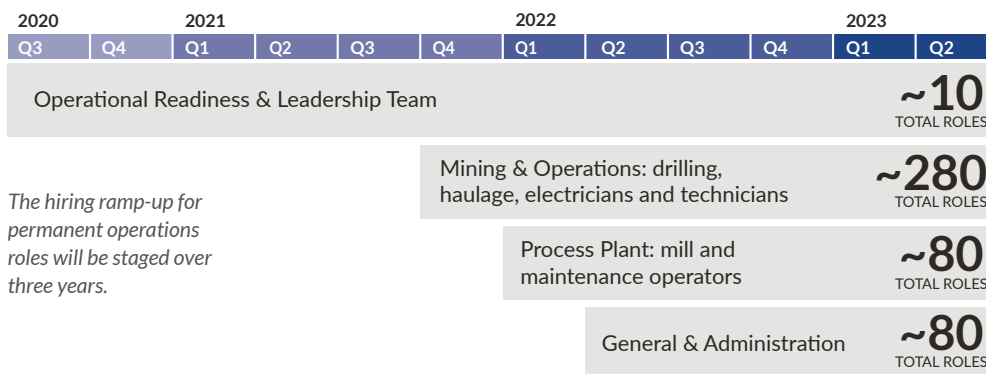
IAMGOLD will hire for permanent operations roles throughout construction. Some construction roles will transition to operations. People are encouraged to apply for roles available through contractors to gain project experience.

### Currently IAMGOLD is hiring:

- Superintendent, Mobile Maintenance
- Site Construction Lead, Process Plant
- Superintendent, Mine Operations
- Senior Resource Geologist
- Superintendent, Finance
- Training Lead

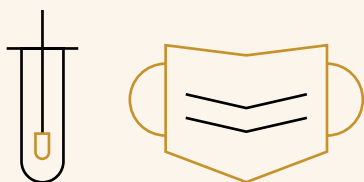
### TO APPLY VISIT:

[www.iamgold.com/cotegoldcareers](http://www.iamgold.com/cotegoldcareers)



# 450

Approximate number of roles for full production



## COVID 19 update

Côté Gold has reacted swiftly to the challenges of managing COVID-19 in the workplace. Site conducted more than 10,000 COVID-19 tests in May and more than 23,000 so far.

In May, testing was increased and stricter protocols were put in place.

These measures have ensured that positive cases are addressed quickly and efficiently to minimize workplace exposure. To further reduce incidental community interaction, all workers who were being accommodated off-site have now been moved to on-site camps.



## Permitting update

IAMGOLD continues to apply for and obtain the permits needed to construct and operate the mine. Since March 2021, we received the following permits:

### Permit to Take Water

- PTTW 4862-BYZRPU – approval of the request to amend 7160-BVUL63 PTTW for Open Pit, Fish Salvage and By-pass Pumping
- PTTW 8733-BYPQV2 – approval of the request to amend 0472-BVBMPD PTTW for Realignment Channels
- PTTW 4145-BZ2M3U – approval of the application for a PTTW for the Overburden Stockpile North and South Dam Construction

### Environmental Compliance Approval

- ECA 2928-C24HJ7 – approval of the request to amend 6493-BXGLVZ for Construction Phase Industrial Sewage Works

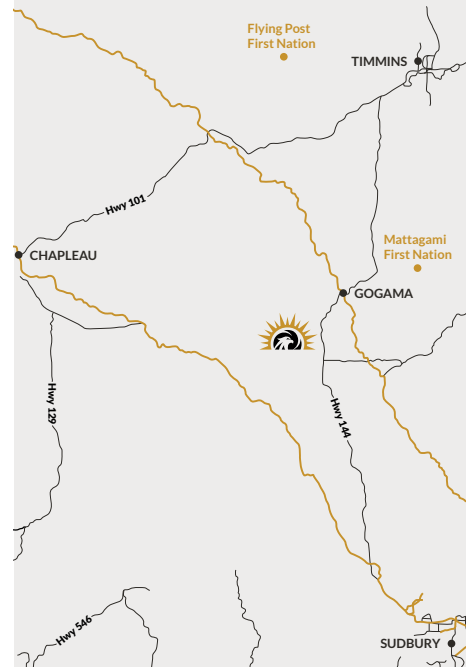
### Forestry Resource Licence

- Amendment to the Forestry Resource License Phase 3 Clearing approval

### Canadian Navigable Waters Act

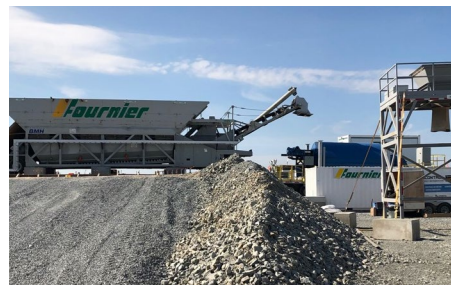
- Approval for the Construction of the Outfall Pipelines at Three Duck Lakes

A full listing of all permits applied for and received to date is available at [www.iamgold.com/cotegold](http://www.iamgold.com/cotegold) in the Permitting Applications section.



*Côte Gold is an open pit gold mining project in northern Ontario. The Project is a joint venture between IAMGOLD Corporation and Sumitomo Metal Mining.*

## Construction progress at Côte Gold



- ▲ The concrete batch plant is now operational and in use to provide concrete for construction.
- ◀ Eagle Lodge construction is ongoing.

All land cleared for construction purposes, including for the transmission line, is done mechanically with feller bunchers and skidders.

### Eagle Lodge

Construction is progressing at the permanent camp, known as Eagle Lodge. Several of the permanent dorms, the new kitchen and the dining area are in service. Work continues on the construction for the remaining dorms, sewage and potable water systems and the administration and recreational complex.

### Material deliveries

Construction material began to arrive at the Project Materials Laydown (PML) site (previously known as the EACOM Laydown) including pre-cast concrete, HDPE piping, process plant structure steel and multi-plate tunnel and culverts for the roads. These materials will be used to construct the processing plant and associated infrastructure.

### Plant site

Blasting has been ongoing for the past few months and is almost complete. Concrete installation has started. Work has started on utilities and piping. Several laydown areas and pads are complete. Runoff water management infrastructure has progressed well. Various contractors have started to install their main construction offices at the plant site.