

# Sable Offshore Corp.

Investor Presentation

September 2025

**SABLE**  
OFFSHORE



**SOC**  
LISTED  
NYSE



# Disclaimer

## FORWARD LOOKING STATEMENTS

The information in this presentation includes “forward-looking statements” within the meaning of the Private Securities Litigation Reform Act of 1995. When used in this presentation, the words “could,” “should,” “will,” “may,” “believe,” “anticipate,” “intend,” “estimate,” “expect,” “project,” “continue,” “plan,” “forecast,” “predict,” “potential,” “future,” “outlook,” and “target,” the negative of such terms and other similar expressions are intended to identify forward-looking statements, although not all forward-looking statements will contain such identifying words. These statements are based on the current beliefs and expectations of Sable’s management and are subject to significant risks and uncertainties. Actual results may differ materially from those described in the forward-looking statements. Factors that could cause Sable’s actual results to differ materially from those described in the forward-looking statements include: the ability to recommence production of the Santa Ynez Unit assets and the cost and time required therefor, production levels once recommenced; commodity price volatility; low prices for oil and/or natural gas; global economic conditions and inflation; increased operating costs; lack of availability of drilling and production equipment, supplies, services and qualified personnel; processing volumes and pipeline throughput; geographical concentration of operations; environmental and weather risks; regulatory changes and uncertainties; the uncertainty inherent in estimating oil and natural gas resources and in projecting future rates of production; reductions in cash flow and lack of access to capital; restrictions in existing or future debt agreements or structured or other financing arrangements; managing growth and integration of acquisitions, and failure to realize the expected value of acquisitions; the ability to recognize the anticipated benefits of the business combination; developments relating to our competitors and our industry; litigation, complaints and/or adverse publicity; privacy and data protection laws, privacy or data breaches, or loss of data; our ability to comply with laws and regulations applicable to our business; and other one-time events and other factors that can be found in Sable’s Annual Report on Form 10-K for the year ended December 31, 2024, and any subsequent Quarterly Report on Form 10-Q or Current Report on Form 8-K, which are filed with the Securities and Exchange Commission and are available on Sable’s website ([www.sableoffshore.com](http://www.sableoffshore.com)) and on the Securities and Exchange Commission’s website ([www.sec.gov](http://www.sec.gov)). Except as required by applicable law, Sable undertakes no obligation to publicly release the result of any revisions to these forward-looking statements to reflect the impact of events or circumstances that may arise after the date of this presentation.

## DISCLAIMER

The Santa Ynez Unit assets discussed in this presentation restarted production in May 2025 and have not sold commercial quantities of hydrocarbons since such Santa Ynez Unit assets were shut in during June of 2015 when the only Onshore Pipeline transporting hydrocarbons produced from such Santa Ynez Unit assets to market ceased transportation. Since the May 2025 production restart, the oil produced has been transported via pipeline to storage tanks onshore at Sable’s Las Flores Canyon processing facility where it is being stored pending onshore pipeline restart. There can be no assurance that the necessary approvals will be obtained that would allow the Onshore Pipeline to recommence transportation or the contemplated use of an Offshore Storage and Treating Vessel that would allow the Santa Ynez Unit assets to recommence sales.

## OIL AND GAS RESOURCE INFORMATION

This presentation includes information regarding estimates of oil and natural gas resources attributable to the Santa Ynez Unit. None of the oil and gas resources attributable to the Santa Ynez Unit are currently classifiable as proved or other reserves because, since the cessation of operations on the pipeline transporting production from the assets, there has been no means to deliver production from the assets to market. Sable has obtained a report (the “NSAI Report”) from Netherland, Sewell & Associates, Inc. (“NSAI”), independent petroleum consultants, with respect to the net estimated contingent resources attributable to the acquired assets and the related pre-tax discounted (at 10%) future net contingent cash flow from such contingent resources, as of December 31, 2021, based on 12-month unweighted arithmetic average of the first-day-of-the-month prices for each month in the period from January to December 2021. As defined by the Society of Petroleum Engineers and used in the NSAI Report, “contingent resources” are those quantities of petroleum which are estimated, on a given date, to be potentially recoverable from known accumulations, but which are not currently considered to be commercially recoverable. Contingent resource estimates may be characterized further as 1C (low estimate), 2C (best estimate) and 3C (high estimate). The contingent resources reflected in the NSAI Report are, as stated in the report, category 1C (low estimate). The NSAI Report states that the estimates included in the report are contingent on (1) approval from federal, state and local regulators to restart production, (2) reestablishment of oil transportation systems to deliver production to market, and (3) commitment to restart the wells and facilities. The NSAI Report states that, if these contingencies are successfully addressed, some portion of the contingent resources estimated in the report may be reclassified as reserves but notes that the estimates have not been risked to account for the possibility that the contingencies are not successfully addressed. The NSAI Report does not address (1) the portion of the contingent resources that could be reclassified as reserves if the contingencies are successfully addressed or (2) whether or to what extent any of the contingent resources that could be so reclassified would be classified as proved, probable or possible reserves. As defined in the Society of Petroleum Engineers’ Petroleum Resources Management System (“PRMS”), “best estimate” is the most realistic assessment of recoverable quantities if only a single result were reported. There is at least a 50% probability that the quantities actually recovered will equal or exceed the “best estimate.” As defined in the PRMS, “low estimate” is a conservative estimate of the quantity that will actually be recovered from the accumulation by a project. There is at least a 90% probability that the quantities actually recovered will equal or exceed the “low estimate.” The resource estimates and related future cash flow information included in this presentation reflect management’s estimates, based in part on the contingent resources estimated in the NSAI Report and supplemented by management’s own estimates of contingent resources attributable to the acquired assets and using the pricing and other assumptions noted in this presentation, of the contingent resources and cash flow that may have been attributable to the acquired assets if the contingencies had been addressed successfully on the date as of which the information is presented. Resource engineering is a process of estimating underground accumulations of hydrocarbons that cannot be measured in an exact way. The accuracy of any resource or reserve estimate depends on the quality of available data, the interpretation of such data, and price and cost assumptions made by reserve engineers. In addition, the results of drilling, testing, and production activities may justify revisions of estimates that were made previously. If significant, such revisions could impact the combined company’s strategy and change the schedule of any production and development drilling. Accordingly, resource estimates may differ significantly from the quantities of oil and natural gas that are ultimately recovered.

## USE OF PROJECTIONS AND ESTIMATES

This presentation contains financial projections and estimates for Sable, including with respect to its future capital expenditures, initial timing and production estimates and future cash costs. Sable’s auditors have not audited, reviewed, compiled or performed any procedures with respect to the projections and estimates for the purpose of their inclusion in this presentation, and, accordingly, no such auditors have expressed an opinion or provided any other form of assurance with respect thereto for the purpose of this presentation. These projections and estimates are for illustrative purposes only and should not be relied upon as being necessarily indicative of future results. The assumptions and estimates underlying the projected information are inherently uncertain and are subject to a wide variety of significant business, regulatory, economic and competitive risks and uncertainties that could cause actual results to differ materially from those contained in the projected information. Even if the assumptions and estimates are correct, projections and estimates are inherently uncertain due to a number of factors outside Sable’s control. Accordingly, there can be no assurance that the projected results are indicative of Sable’s future performance or that actual results will not differ materially from those presented in the projected information. Inclusion of the projected information in this presentation should not be regarded as a representation by any person, including, without limitation, Sable, that the results contained in the projected information will be achieved.

# Sable Offshore Corp. (NYSE: SOC)

Premier offshore California asset paired with experienced management team

## High Quality Asset

**Santa Ynez Unit (“SYU”) is a massive oil-weighted resource**

- Three offshore platforms located in federal waters north of Santa Barbara, California
- Wholly-owned onshore production treatment facilities
- Discovered in 1968 with significant production history. SYU produced 45,000 boe/d rate at shut-in in 2015
- **Production restarted on May 15, 2025 with significantly improved well tests compared to those at shut-in<sup>(1)</sup>**
- >100 identified infill drilling and step-out opportunities, along with workovers and ESP<sup>(2)</sup> installation on existing wellbores

## Highly-Qualified Stewards of the Asset

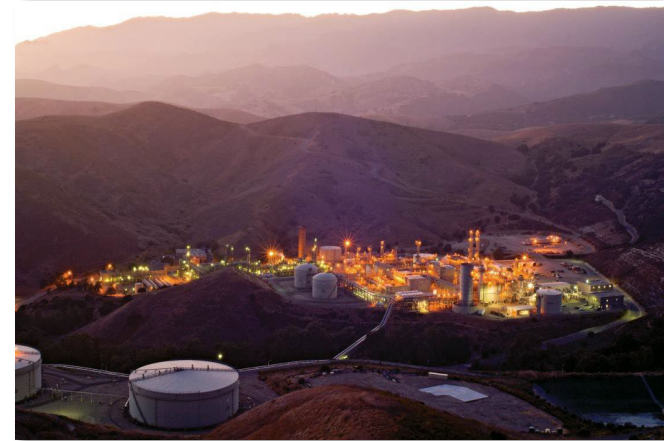
**Sable management are well-qualified to operate Santa Ynez**

- Exemplary track record of operating safely in California and offshore<sup>(3)</sup>
- Demonstrated expertise via numerous awards from state and federal agencies
- Sable is actively pursuing two options to extract value from SYU, including leasing an Offshore Storage and Treating Vessel (“OS&T”)

## Santa Ynez Unit



## Las Flores Canyon Processing Facility



(1) SYU-produced oil is being held in the Company's storage tanks at LFC while Sable awaits final approval to resume petroleum transportation through the Las Flores Pipeline System as outlined in the Consent Decree. Alternatively, Sable contemplates installing an Offshore Storage and Treating vessel to process oil and gas production. Initial restart of production is higher than expected sustained production and there is uncertainty regarding the amount and timing of production decline from recently opened wells.

(2) Electric Submersible Pump.

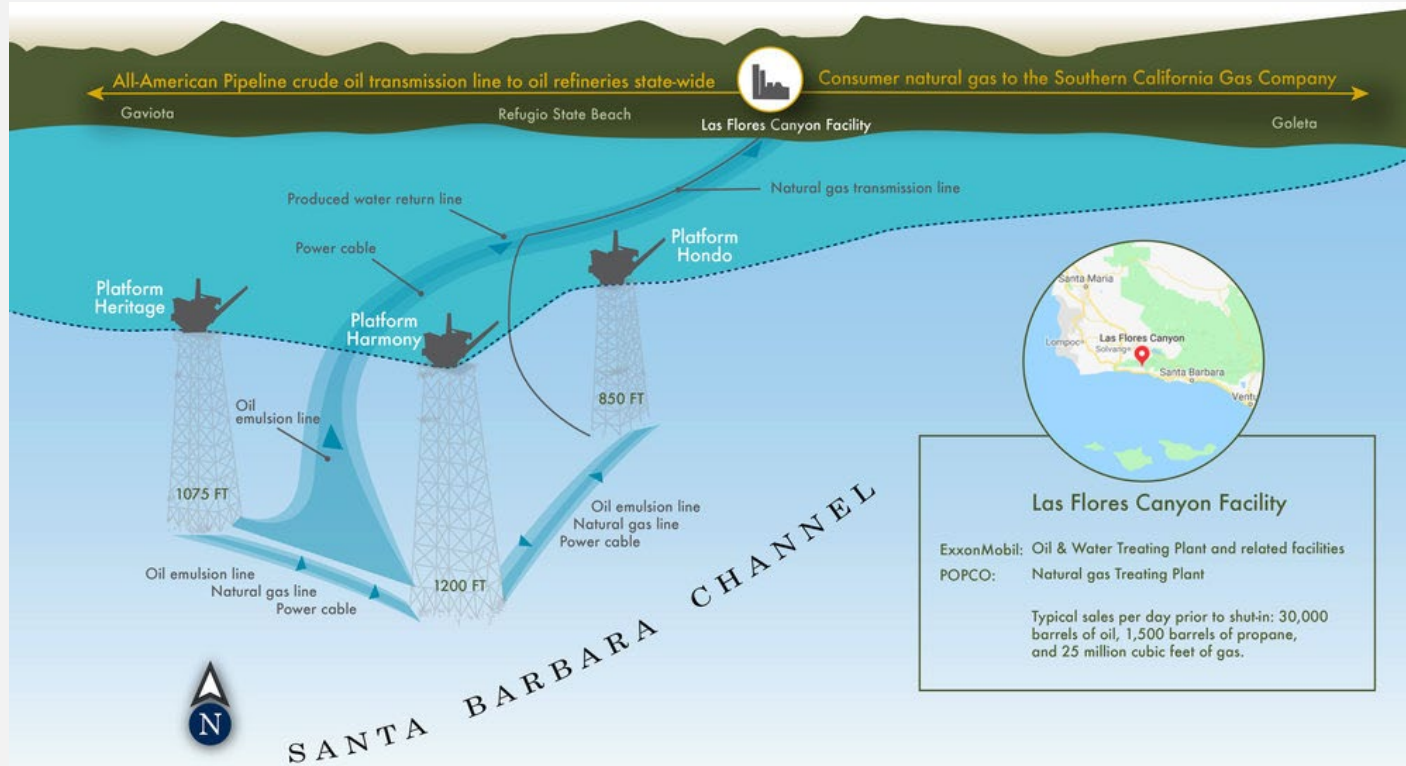
(3) While at Plains Exploration & Production, current Sable management team operated platforms included Irene at Point Pedernales and Hidalgo, Harvest and Hermosa at Point Arguello.

# SYU History

## Premier offshore project developed by Exxon over 40+ years

### SYU Development Background

- **Discovered in 1968, over the course of 14 years Exxon consolidated more than a dozen offshore federal oil leases into a streamlined production unit known as SYU**
  - SYU construction began in 1976 with Platform Hondo, with first production in 1981, followed by Platform Harmony and Platform Heritage (both online in 1994); both Harmony and Heritage have dedicated rigs for future development. Production was initially processed in federal waters in an OS&T from 1981 to 1994.
  - SYU includes 112 wells (90 producers, 12 injectors, 10 idle); sizable inventory of infill drilling and additional step-out drilling opportunities<sup>(1)</sup>
  - Platforms located 5 to 9 miles offshore Santa Barbara County in shallow water depths of 900-1,200'<sup>(2)</sup>
- **Wholly-owned onshore oil and natural gas processing facility at Las Flores Canyon (not visible from highway)**
- **Shut in from June 2015 to May 2025 due to pipeline issue (Plains All-American Pipeline ("AAPL") operated)**
  - Production at all Exxon platforms and facilities was safely suspended. SYU was placed into a preserved state with regular inspections and maintenance
  - AAPL received Consent Decree and began work to resume petroleum transportation
  - Exxon acquired pipeline from AAPL
- **Sable restarted production at SYU Platform Harmony in May 2025 and began flowing production to Las Flores Canyon<sup>(3)</sup>**
- **Sable is pursuing an OS&T as an offtake alternative to LFC**



(1) Sable management have identified >100 infill drilling and step-out opportunities.

(2) Primary Reservoir: Miocene Monterey formation (Sour low-gravity oil (4-26 API); Secondary Reservoirs: Oligocene and Eocene oil/gas sandstone (Sweet high-gravity oil (35 API).

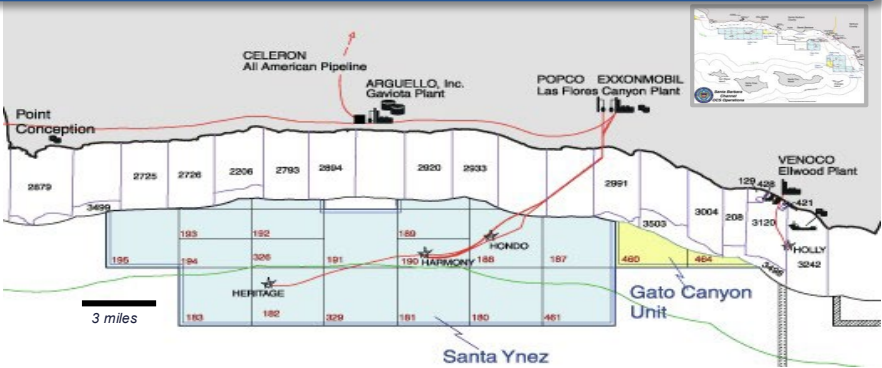
(3) SYU-produced oil is being held in the Company's storage tanks at LFC while Sable awaits regulatory approvals to resume petroleum transportation through the Las Flores Pipeline System as outlined in the Consent Decree. Alternatively, Sable contemplates installing Offshore Storage & Treating vessel to process oil and gas production.

# SYU Technical Overview

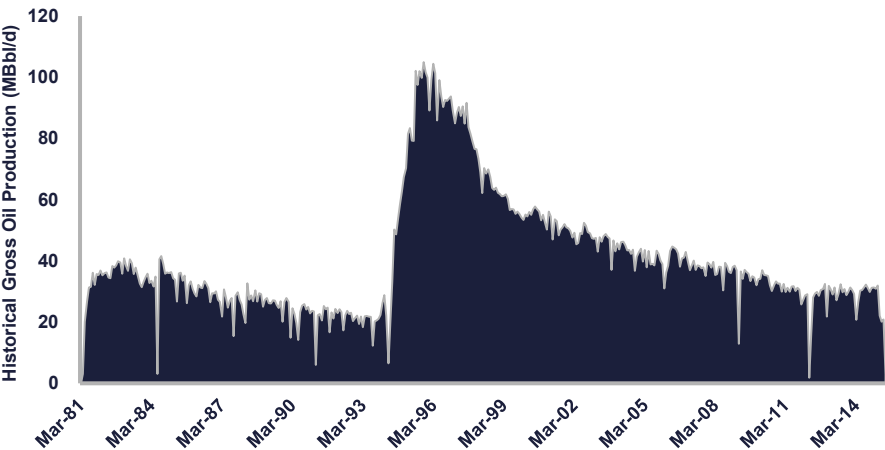
## Significant production history and massive resource potential

### Santa Ynez Unit Overview

- **Between 1981 and 2014, SYU produced over 671 MMBoe**
  - Production averaged 29 MBbl/d and 27 MMcf/d in 2014 (gross), the last full year when the asset was online
  - Low, stable decline anticipated of ~8% on average annually from existing NSAI Low Estimate Base Contingent Resources over the next five years<sup>(1)</sup>
- **Sable has also identified >100 additional infill development and step-out opportunities across the leasehold**
  - In 2010, Exxon drilled the world’s longest extended-reach well from an existing fixed platform drilling rig, increasing the ability to produce more oil from existing facilities; the well extends more than six miles horizontally



### Robust Production Prior to Pipeline Closure



### 1 Billion + Barrels Recoverable

**SYU  
Reservoir  
Characterization**

**Massive  
Resource**

1,700'	Original Oil Column
(300')	Depleted Oil
(400')	Gas Cap Expansion
<b>1,000'</b>	<b>Oil Column Remaining</b>
1,207	MMBoe of Net Recoverable Total Resources
(561)	MMBoe of Net Cum. Prod.
<b>646</b>	<b>MMBoe of Remaining Total Net Estimated Contingent Resources</b>

Note: Management estimates are inherently uncertain and subject to numerous risks. Actual results may differ in a material amount from management estimates and projections.  
(1) 5-year period begins after production re-start.



# SYU Acreage Overview

SYU leases are all located in Federal waters

## Offshore Position

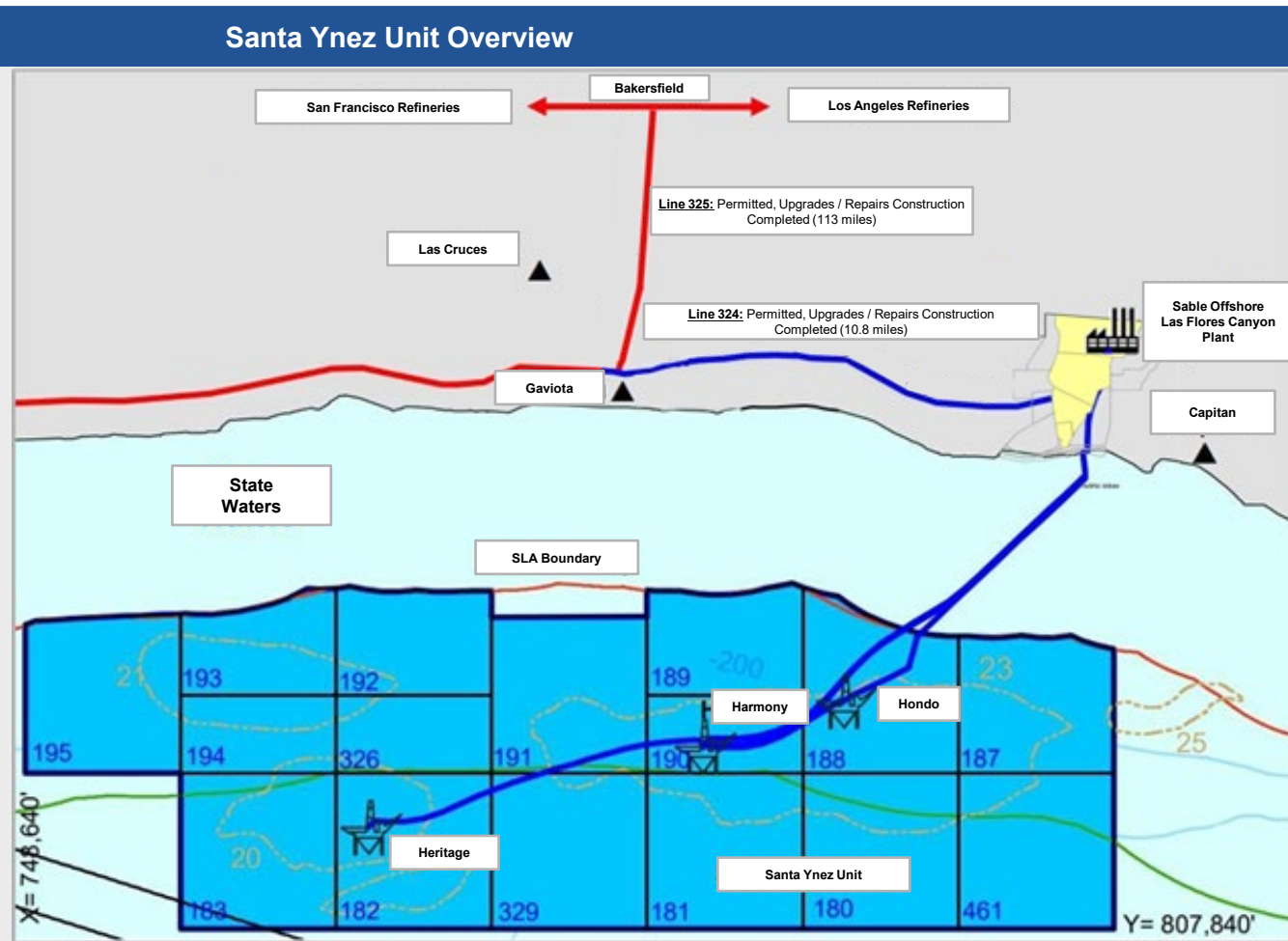
- 16 Federal Leases, ~76,000 acres
- First leased in 1969
- Product marketed through OS&T from 1981 – 1994

## Santa Ynez Unit Agreement

- Effective date: November 12, 1970
- Unit blocks: OCS-P 180, 181, 182, 183, 187, 188, 189, 190, 191, 192, 193, 194, 195, 326, 329, 461
- Sable operated, 100% WI, 83.6% NRI
- Annual lease extensions granted by the Bureau of Safety and Environmental Enforcement and authorized well re-work during shut-in; supported by quarterly updates

## Onshore Position

- ~1,480 surface acres, facilities occupy ~35 acres
- Facilities 100% Sable owned



# SYU Offtake Options

Sable is actively pursuing two options to extract value from SYU

## Option 1: Las Flores Canyon and Pipeline System

- **First sales estimate: Q4 2025**
  - Utilizes processing and offtake method from 1994-2015
  - Leverages existing onshore infrastructure, including Las Flores Canyon Facility and Las Flores Pipeline System
  - Barrels tied to California refinery system via Lines 324 and 325
  - Potential to immediately increase California domestic crude supply by approximately 15%
- **Participates in Santa Barbara's local, county, and state communities as a key stakeholder**
  - State income taxes, production taxes, and ad valorem taxes payable to state or local jurisdictions
  - Prior operator was historically the largest taxpayer in Santa Barbara County
  - Provides significant employment to California citizens with commitment to the local community
  - Takes advantage of substantial capital investment and Best Available Technology for pipeline safety in California



## Option 2: Leased Offshore Storage & Treating Vessel

- **First sales estimate: Q4 2026**
- **Utilizes existing OS&T permit and offtake method from 1981-1994<sup>(1)</sup>**
  - Expedited permitting support from the Federal Government has been requested
  - No state income taxes, production taxes, or ad valorem taxes payable to state or local jurisdictions
  - Barrels not tied to California refinery pricing dynamics and can be marketed domestically outside of California or internationally to the highest bidder
- **Sable is evaluating options to refinance the EM Term Loan and fund facility modifications**
- **Anticipates \$100MM of 2026E capex for offshore facility upgrades and modifications<sup>(2)</sup>**
  - OS&T lease costs expected to be approximately \$3 - \$4 / Boe, which will likely be offset by LFC and Las Flores pipeline system opex savings
- **Sable is pursuing multiple alternative paths to incremental value via the pursuit of all legal remedies**



(1) Existing OS&T permit that was utilized from 1981-1994 remains in place.

(2) Management estimates are inherently uncertain and subject to numerous risks. Actual results may differ in a material amount from management estimates and projections. Proposed development plan is based on market conditions and subject to annual Board approval.

Note: Bottom image is a photo of the Exxon Santa Ynez vessel used to store and transport oil produced at Platform Hondo.

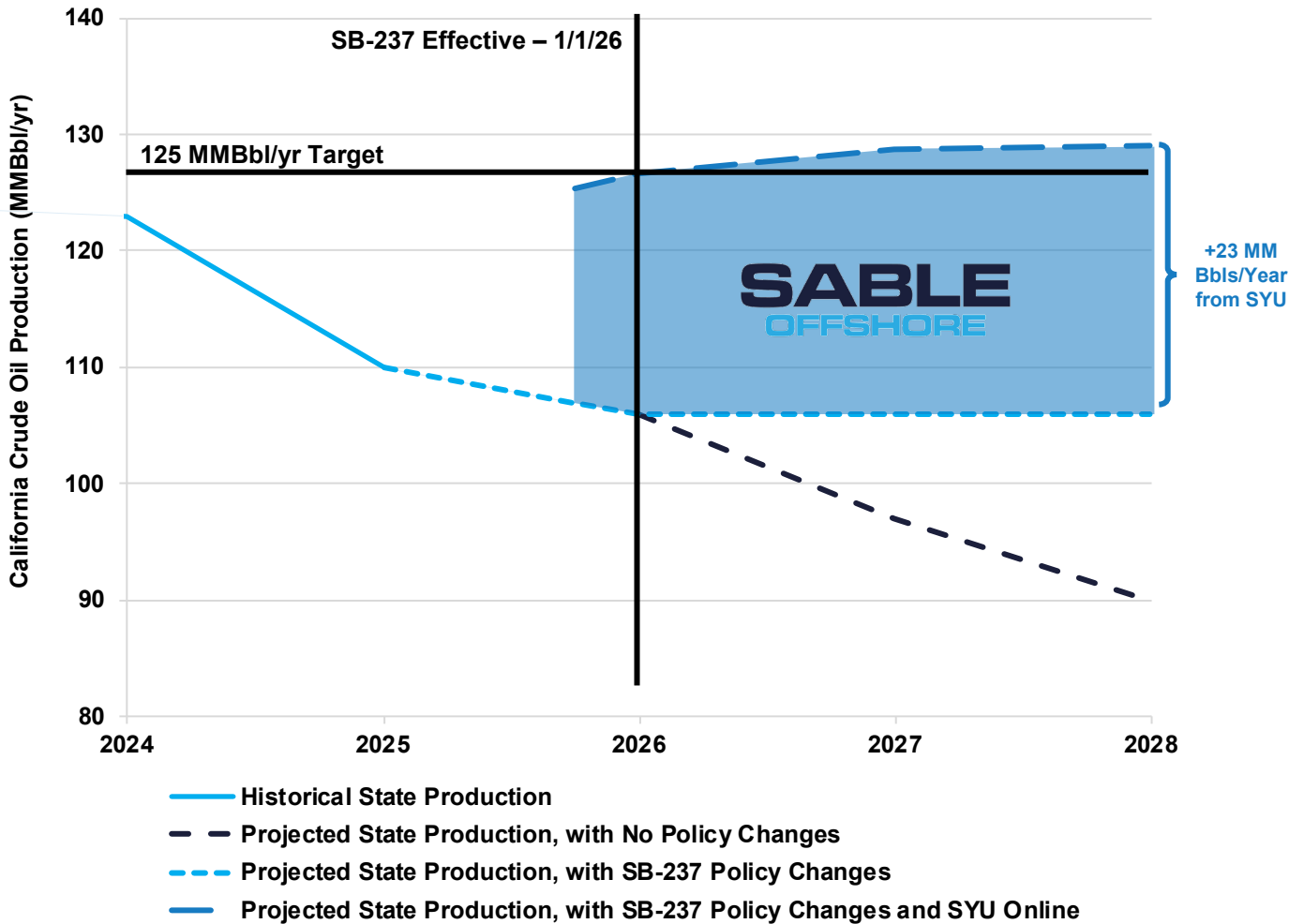
# SYU Accelerates and Achieves California Supply Stabilization

SYU production provides immediate supply increase into California refineries via Option 1

## Commentary

- California outlines a ~57,000 barrel of oil per day increase in production necessary to satisfy state production targets
- Only Sable's SYU and onshore assets provide immediate access to available oil reserves without the major capital investment necessary for new onshore production
- Sable's SYU production can lower gasoline prices for California citizens**

## California Crude Oil Production Forecast (MMBbl/yr)



Source: CalGEM presentation to the chairs of the Natural Resources, Transportation, and Utilities and Energy Committees of the California State Assembly on August 20, 2025.

Note: CalGEM presentation replicated to best extent possible, values are estimates. 2026 – 2028 California onshore production is Sable's internally estimated California onshore production based on operator commentary in public disclosures and sell-side equity research analysis.

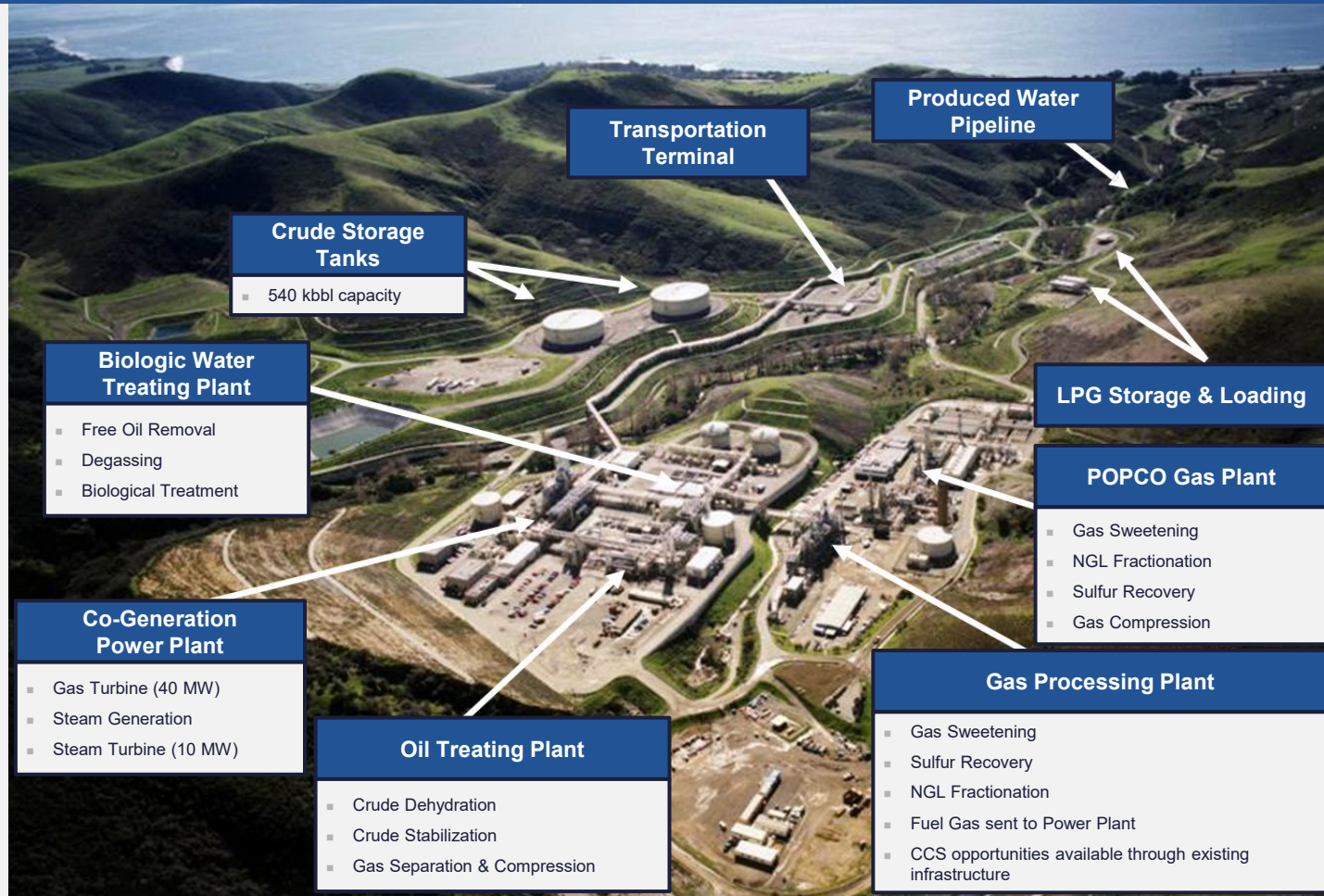


# Las Flores Canyon Infrastructure (Option 1)

Wholly-owned infrastructure at Las Flores Canyon represents substantial capital investment and incremental value

## Las Flores Canyon Cogeneration & Processing Facility

- Fully integrated oil and gas processing facilities acquired by Sable for managing 100% of the SYU produced volumes with additional capacity for future SYU development
- Gas and NGL volumes sold into the Southern California market to homes and businesses and oil volumes sold at Brent based pricing to local refineries
- Evaluating significant CCS opportunity leveraging existing infrastructure and access



# Offshore Storage and Treating Vessel (Option 2)

Leased OS&T provides marketing flexibility, state cost savings and constructive regulatory framework

Santa Ynez Unit Serviced with OS&T Vessel in Federal Waters

- Utilized by Exxon at the onset of SYU production in federal waters offshore Santa Barbara
- Replaces critical functions performed onshore in Option 1 with an offshore solution
- Streamlined regulatory environment
  - Expedited permitting support from the Federal Government has been requested
- Hydrocarbon product to be sold into domestic refineries outside of California or into international markets
- Sable has identified multiple vessels with ideal specifications for the SYU



Note: Image is a photo of the Exxon Santa Ynez vessel used to store and transport oil produced at Platform Hondo.

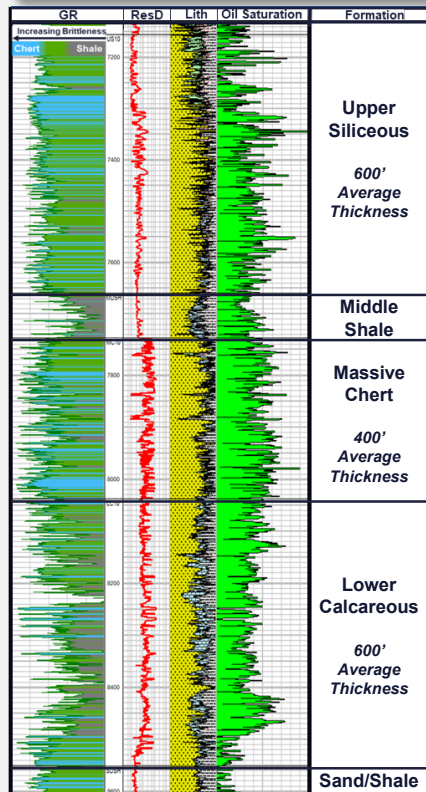


# Undrilled Inventory

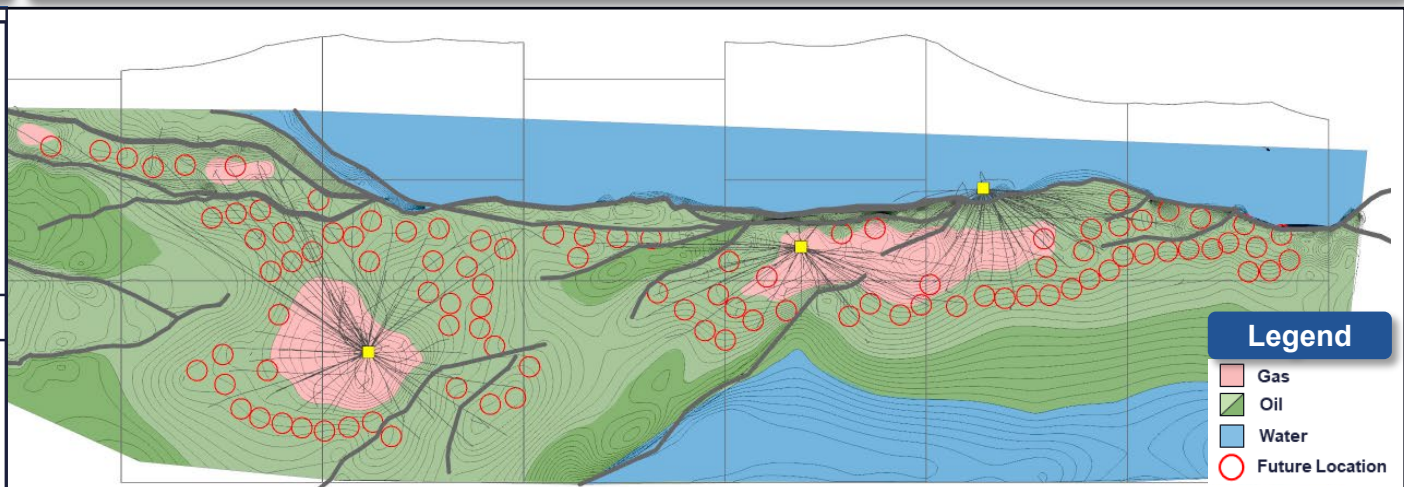
## New Drill Inventory Overview

- Technical opportunity inventory is based on 80-acre drainage area, maturing field from original 120 acre spacing
- Future development strategy focuses on the high-quality Monterey Upper Siliceous reservoir in areas that have undergone increased diagenesis which leads to a more fractures, allowing for greater storage of oil and increased permeability
- Wellbores will be aligned to maximize contact with the primary fracture orientation for the field and average over 2,000' gross perforations per well

### Monterey Type Log



### Top of Monterey Structure



#### Legend

- Gas
- Oil
- Water
- Future Location

# SYU is a Prolific Offshore Asset

SYU is a top producer with the most remaining resource among current OCS producing fields

## Cumulative Production

Field Name	Prospect Name	Oil (MMBbl)	Gas (Bcf)	Total (MMBoe)
Mississippi Canyon 807	MARS-URSA	1,504	1,922	1,846
West Delta 30		593	977	767
Bay Marchand 2		547	576	649
<b>Santa Ynez Unit</b>	<b>SYU</b>	<b>507</b>	<b>984</b>	<b>671</b>
Eugene Island 330		462	1,902	800
Green Canyon 640	TAHITI/CAE/TONG	436	289	487
Green Canyon 743	ATLANTIS	395	266	442
Grand Isle 43		382	1,658	677
Green Canyon 654	SHENZI	328	130	351
Grand Isle 16		308	398	379
Mississippi Canyon 776	N.THUNDER HORSE	291	285	342
Garden Banks 426	AUGER	286	1,014	467
West Delta 73		280	692	403
Main Pass 41		274	1,560	552
South Pass 61		273	530	367
Mississippi Canyon 84	KING/HORN MT.	271	285	322
South Timbalier 21		259	427	335
Green Canyon 826	MAD DOG	233	68	245
Ship Shoal 208		228	1,403	477
Mississippi Canyon 778	THUNDER HORSE	203	148	230
South Pass 89		197	875	353
Mississippi Canyon 194	COGNAC	183	764	319
Alaminos Canyon 857	GREAT WHITE	182	331	240
Green Canyon 244	TROIKA	181	345	243
South Timbalier 135		170	628	282

## Estimated Remaining Reserves<sup>(1)</sup>

Field Name	Prospect Name	Oil (MMBbl)	Gas (Bcf)	Total (MMBoe)
<b>Santa Ynez Unit</b>	<b>SYU</b>	<b>667</b>	<b>1,424</b>	<b>904</b>
Mississippi Canyon 807	MARS-URSA	473	688	596
Mississippi Canyon 940	VITO	411	200	446
Mississippi Canyon 392	APPOMATTOX	319	165	348
Mississippi Canyon 778	THUNDER HORSE	245	179	277
Walker Ridge 678	SAINT MALO	244	58	255
Green Canyon 743	ATLANTIS	188	211	226
Keathley Canyon 875	LUCIUS	131	164	160
Green Canyon 826	MAD DOG	130	84	145
Green Canyon 654	SHENZI	130	50	139
Green Canyon 640	TAHITI/CAE/TONG	120	83	134
Green Canyon 244	TROIKA	57	92	73
Mississippi Canyon 776	N.THUNDER HORSE	55	55	65
Mississippi Canyon 84	KING/HORN MT.	48	36	54
Alaminos Canyon 857	GREAT WHITE	39	45	47
Garden Banks 171	SALSA	24	90	40
Grand Isle 43		22	89	38
Garden Banks 426	AUGER	19	62	30
Eugene Island 330		9	19	12
Ship Shoal 208		5	32	11
Viosca Knoll 956	RAM-POWELL	5	24	9
South Pass 61		4	4	5
Eugene Island 238		4	91	21
West Delta 73		4	9	5
West Delta 30		3	8	5

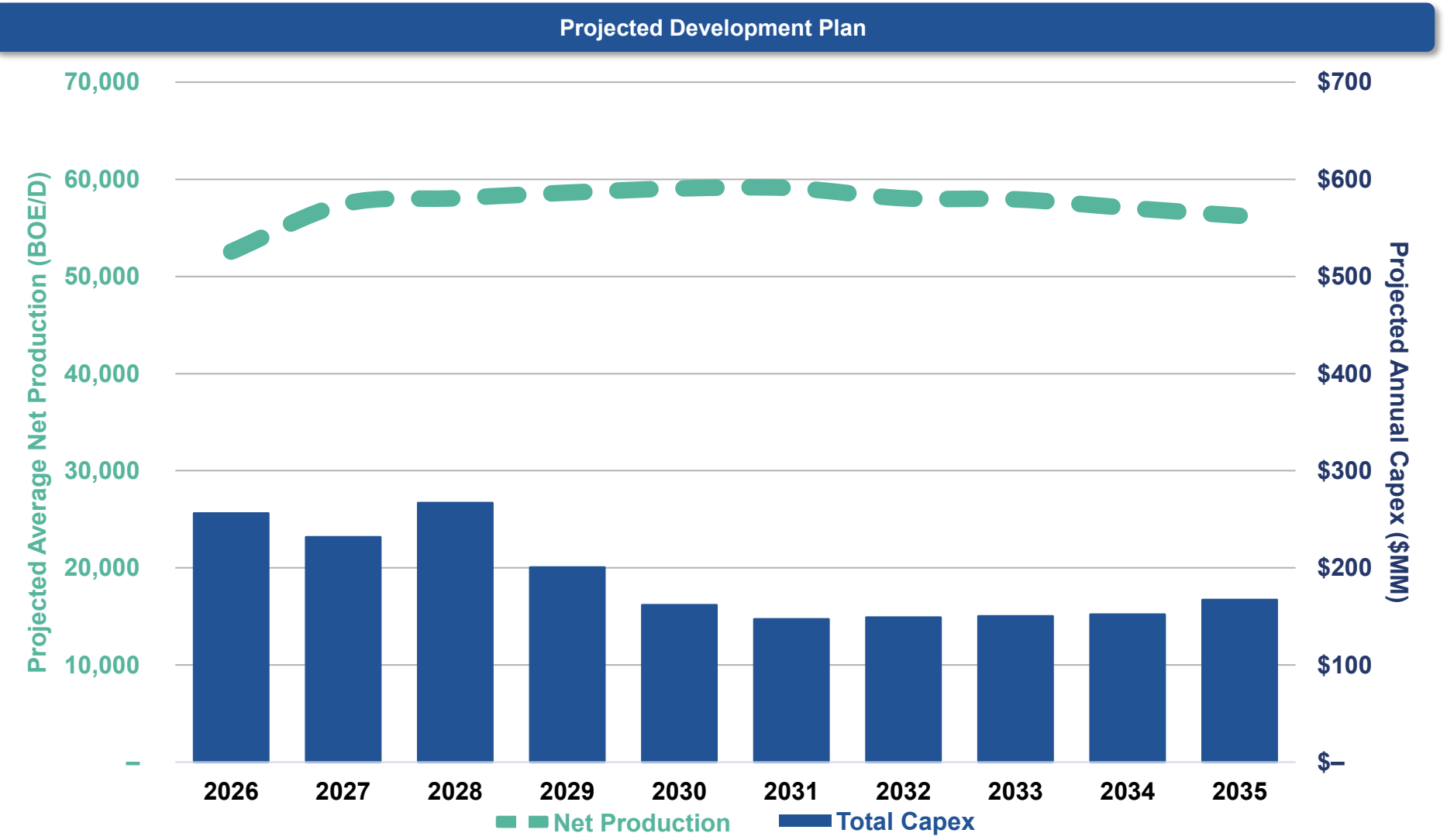
Source: BOEM 2021 report on top producing OCS fields. SYU historical production figures via ExxonMobil.

(1) Santa Ynez Unit EUR figures per Sable management, as published in our 1Q24 Contingent Resource Summary. Assumes SEC pricing as of April 2024 and effective date of May 2024.



# Sable Operational Plan (Option 1)

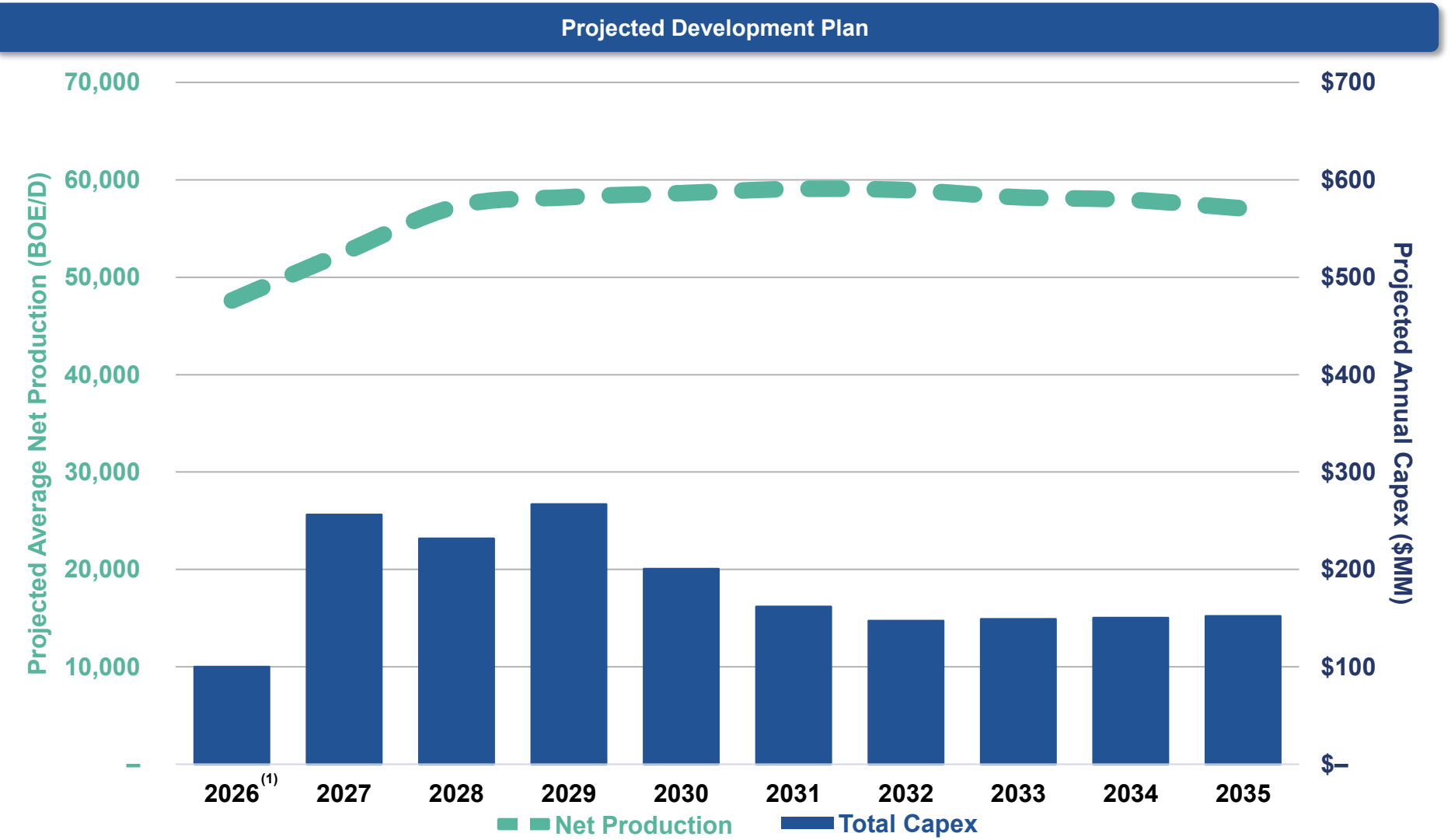
Option 1 represents the fastest path to increase California domestic production



Note: Management estimates are inherently uncertain and subject to numerous risks. Actual results may differ in a material amount from management estimates and projections. Proposed development plan is based on market conditions and subject to annual Board approval.

# Sable Operational Plan (Option 2)

Option 2 allows for development plan prosecution via an OS&T vessel



Note: Management estimates are inherently uncertain and subject to numerous risks. Actual results may differ in a material amount from management estimates and projections. Proposed development plan is based on market conditions and subject to annual Board approval.  
(1) Production reflects 4Q26E (October 2026E – December 2026E) average daily production.

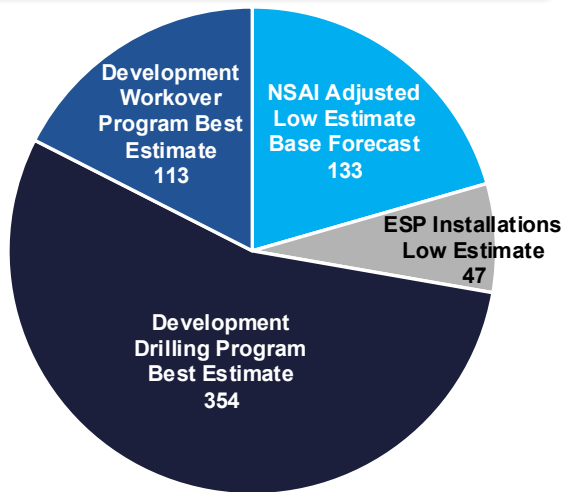


# Substantial Resource Base

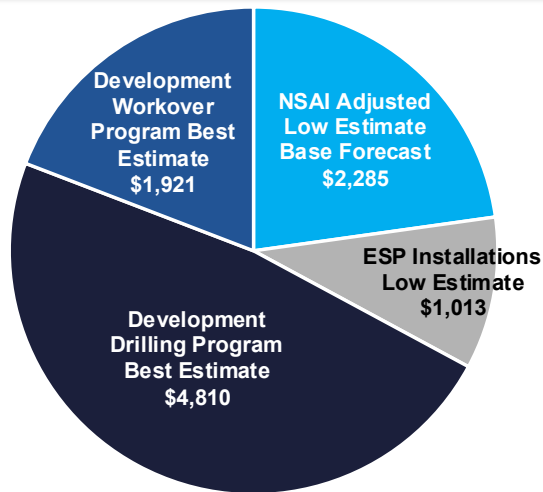
## Contingent Resource Summary<sup>(1)(2)(3)</sup>

Resource Category	Net Estimated Contingent Resources				Estimated Cash Flows (\$MM)	
	Oil (MMBbls)	Gas (Bcf)	NGL (MMBbls)	Total (MMBoe)	Capex (\$MM)	PV-10 SEC Pricing
NSAI Adjusted Low Estimate Base Forecast <sup>(4)</sup>	111	121	2	133	–	\$2,285
ESP Installations Low Estimate <sup>(5)</sup>	41	33	1	47	\$100	1,013
<b>Total Low Estimate Contingent Resources</b>	<b>151</b>	<b>154</b>	<b>2</b>	<b>179</b>	<b>\$100</b>	<b>\$3,298</b>
Development Drilling Program Best Estimate <sup>(6)</sup>	308	251	4	354	\$1,997	\$4,810
Development Workover Program Best Estimate <sup>(7)</sup>	98	80	1	113	245	1,921
<b>Total Best Estimate Contingent Resources</b>	<b>406</b>	<b>332</b>	<b>5</b>	<b>467</b>	<b>\$2,242</b>	<b>\$6,731</b>
<b>Total Net Estimated Contingent Resources / Total Blended NAV</b>	<b>557</b>	<b>486</b>	<b>7</b>	<b>646</b>	<b>\$2,342</b>	<b>\$10,029</b>

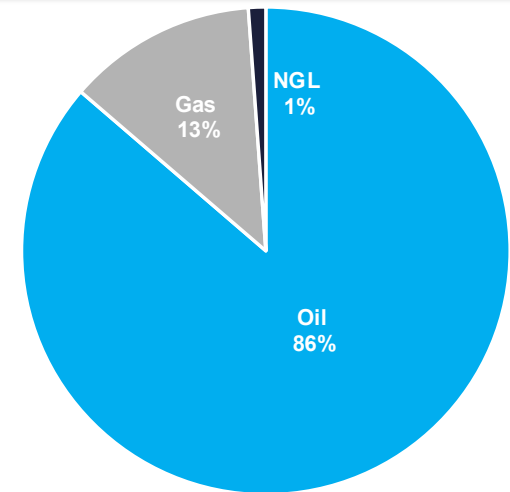
### Net Contingent Resources (MMBoe)



### PV-10 Contingent Resources (\$MM)



### Contingent Resources by Commodity



(1) Assumes SEC pricing as of April 2024 and effective date of May 1, 2024. April 2024 SEC Pricing: Oil \$83.14 / Bbl; Gas \$2.40 / MMBtu; NGL \$64.85 / Bbl.

(2) Management estimates are inherently uncertain. Actual results may differ in a material amount from management estimates and projections.

(3) Net quantities shown herein are unrisks volumes and may represent levels of uncertainty as to their technical and commercial recovery.

(4) Estimated using NSAI Report Resources at SEC Brent Pricing and Sable management estimated lease operating expenses; low estimate contingent resources with 90% probability of delivering unrisks remaining recoverable volumes from field-wide individual historical well performance. Assumes the wells and facilities will resume operation under similar production and sales conditions present at the time production was suspended.

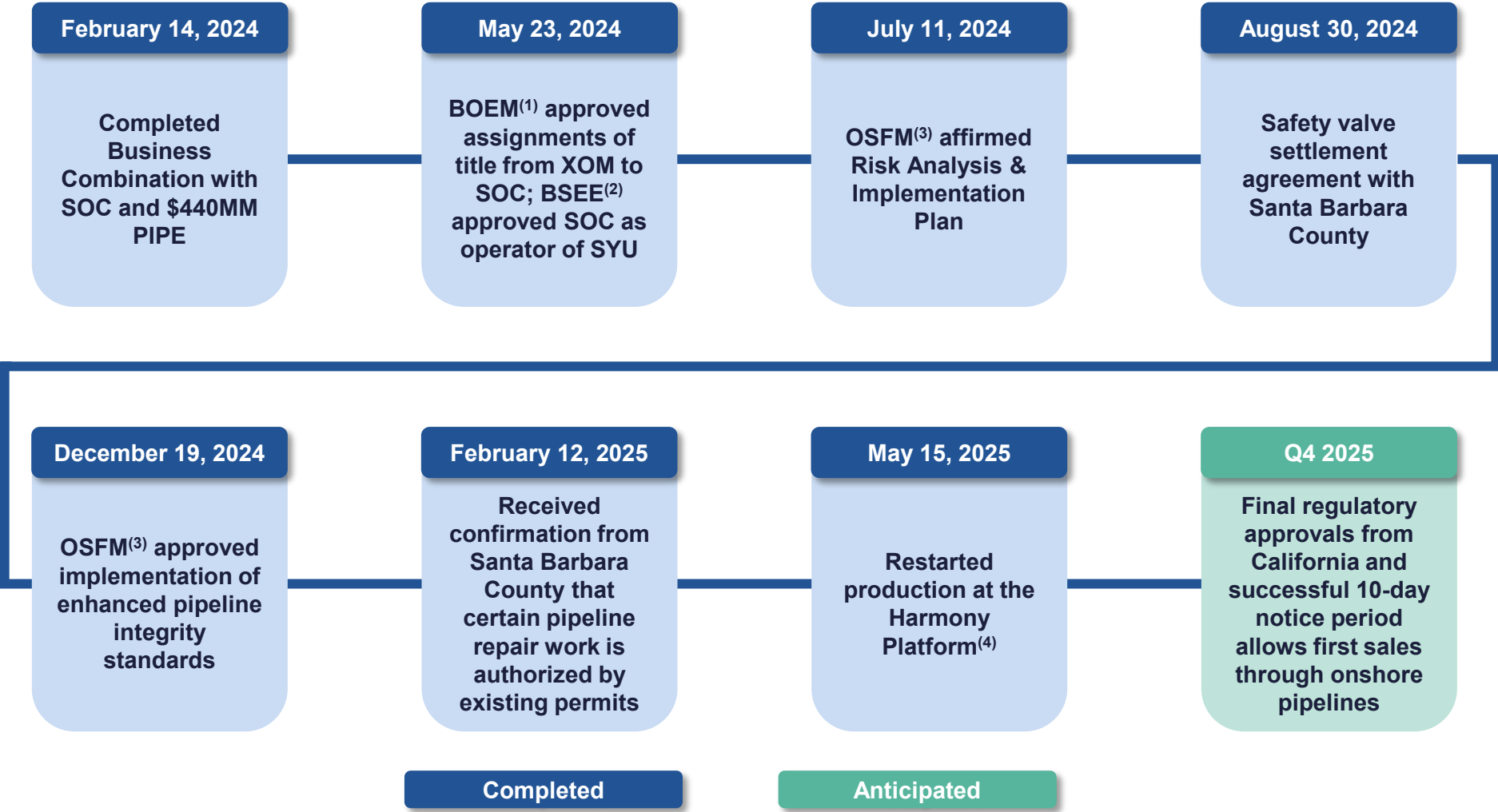
(5) Low estimate contingent resources with 90% probability of delivering unrisks incremental recoverable volumes from statistical field-wide historical well performance driven by the installation of ESPs.

(6) Best estimate contingent resources with 50% probability of delivering unrisks remaining recoverable volumes from statistical field-wide historical new drill locations in untested fault compartments or sub-accumulations within test fault compartments.

(7) Best estimate contingent resources with 50% probability of delivering unrisks remaining recoverable volumes from existing wellbores calculated from statistical field-wide historical work-over well performance.

# Key Milestones (Option 1)

Sable is steadily advancing through regulatory and technical milestones

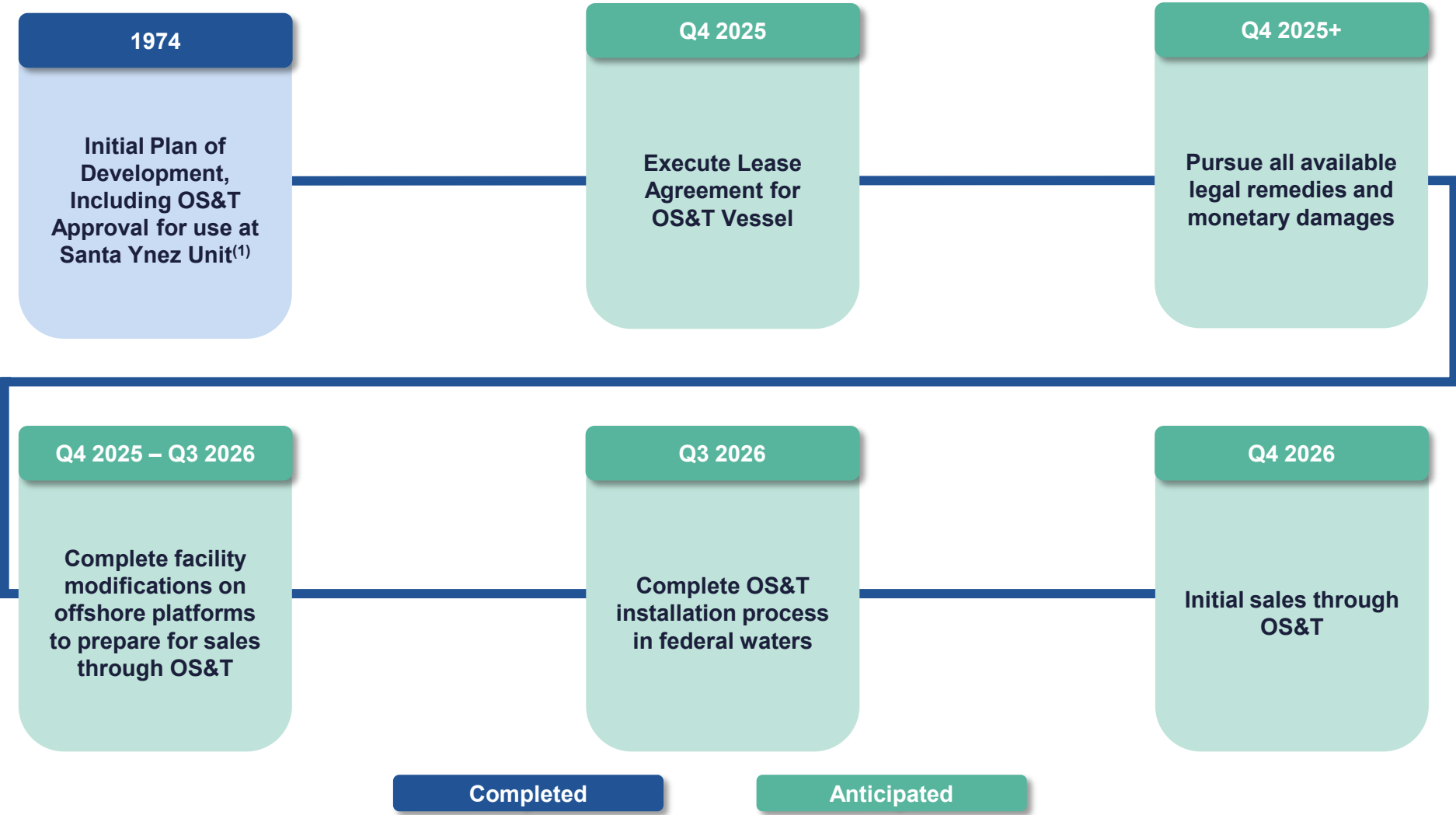


(1) Bureau of Ocean Energy Management  
(2) Bureau of Safety and Environmental Enforcement  
(3) California Office of the State Fire Marshal.  
(4) SYU-produced oil is being held in the Company's storage tanks at LFC while Sable awaits approval of its Restart Plans by the Office of the State Fire Marshal.



# Key Milestones (Option 2)

Sable plans to execute all necessary milestones to achieve first sales in Q4 2026



(1) Existing OS&T permit that was utilized from 1981-1994 remains in place.

# Health, Safety, and Environmental Highlights

## Sable management team is an award-winning, safe, and prudent California Operator

### Offshore California Highlights



**2004:** Received Santa Barbara County's First and Only "Resolution for Good Operator" Recognizing PXP's Outstanding Operating Performance

**2008:** Santa Barbara County Commendation for Outstanding Maintenance Practices at LOGP

**2011:** Occupational Excellence Achievement Award for 21 PXP locations

**2009-2010:** Perfect Record Award for operating 11,390 employee hours without occupational injury or illness involving days away from work

**2009:** National Industry Leadership Award

**2007-2008:** Occupational Excellence Achievement Awards for Outstanding Safety Practices

Occupational Excellence Achievement Awards for Outstanding Safety Practices



**2004:** Ranked MMS's Best Operator in the Pacific OCS for Safety of Platform and Pipeline Operations

### Onshore California Highlights



**2006:** U.S. Bureau of Land Management Operator of the Year Award

**2006:** Best Management Practices National Award in Habitat Conservation

**2008-2004:** Recipient of the Environmental Lease Maintenance Award

**2006:** Recipient of the Clean Lease Awards



Division of Oil, Gas and Geothermal Resources (DOGGR) Lease Maintenance Award for Outstanding Safety and Lease Maintenance 12 years and 13 years in a row at Packard and San Vicente



**2010:** Occupational Excellence Achievement Award for PXP's California Los Angeles Basin San Vicente and Packard locations



Two commendations from the Air Pollution Control District for Emissions Reductions and Use of Innovative Emissions Control Technology at the Arroyo Grande Oil Field



Platform Heritage



Platform Hondo



Platform Harmony

### Risk Management Partner to Local Communities

- Sable Management has a track record of excellence as a safe and responsible steward of California's onshore and offshore resources
- As PXP, owned / operated offshore Point Arguello (Harvest Platform, Hermosa Platform, and Hidalgo Platform) and Point Pedernales (Irene Platform)
- Onshore operations included Arroyo Grande, Los Angeles Basin, and San Joaquin Valley assets

- "Due to PXP's generosity and civic mindedness ... [using] their facility, nearly 200 firefighters have received important Survival Training" – Ron Lawrence, **Central Regional Training / Safety Captain LA County Fire Department**
- "The Culver City Fire Department is forever grateful to Plains Exploration & Production Co. for their continued training support and expertise" – Tim Wilson, **Captain / Training Officer, Culver City Fire Dept.**

(1) Minerals Management Service (MMS) was reorganized into Bureau of Ocean Energy Management (BOEM) and Bureau of Safety and Environmental Enforcement (BSEE) in 2011.

(2) Division of Oil, Gas and Geothermal Resources (DOGGR) was reorganized into California Geologic Energy Management Division (CalGEM) in 2020.

# Key Investment Highlights

## Premier asset and experienced management team drive shareholder value



### Attractive Returns

- Low-Cost, low-decline assets enable an aggressive shareholder return program via dividends and share repurchases



### Primed for Low-Cost Production Growth

- Modest reinvestment required in the near-term as Sable capitalizes on ESP installations and workovers on existing wellbores



### Substantial Upside

- De-risked reservoir first discovered in the 1960's
- Potential for substantial growth with accelerated development



### High Operational Control

- 100% operated with favorable 16.4% royalty burden



### Conservative Leverage Profile

- Sable management targeting long-term leverage ratios of ~1.0x to maximize flexibility for distributions and development



### Access to Infrastructure & End Markets

- Wholly-owned pipeline and processing helps preserve margin
- Oil sales contracts linked to Brent Crude
- Option 1 and Option 2 both provide attractive options for monetizing crude oil



### HS&E Stewardship

- Outstanding HS&E<sup>(1)</sup> and operational track record in California
- Significant opportunity for CCS utilizing existing assets

*Santa Ynez Unit is a Differentiated, Value Driven Asset*

(1) Health, safety and environment.