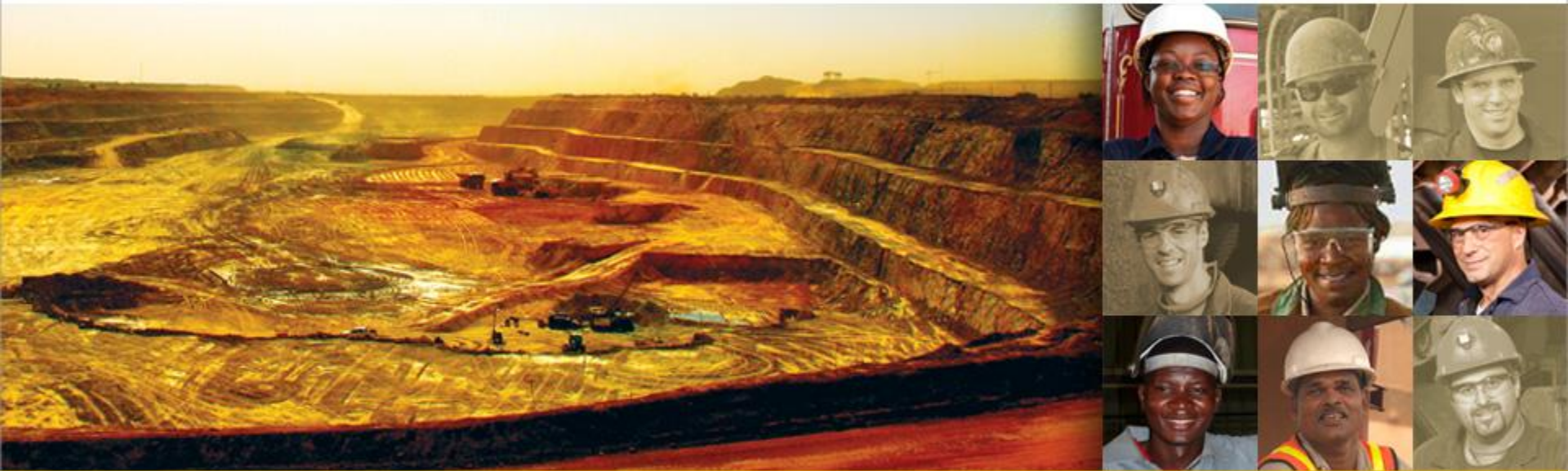


Maximizing Returns for Investors

April 18, 2012



Gordon Stothart

Executive Vice President & Chief Operating Officer

TSX: IMG NYSE: IAG

Cautionary Statement

This presentation contains forward-looking statements. All statements, other than of historical fact, that address activities, events or developments that the Company believes, expects or anticipates will or may occur in the future (including, without limitation, statements regarding expected, estimated or planned gold and niobium production, cash costs, margin expansion, capital expenditures and exploration expenditures and statements regarding the estimation of mineral resources, exploration results, potential mineralization, potential mineral resources and mineral reserves) are forward-looking statements. Forward-looking statements are generally identifiable by use of the words "may", "will", "should", "continue", "expect", "anticipate", "estimate", "believe", "intend", "plan" or "project" or the negative of these words or other variations on these words or comparable terminology. Forward-looking statements are subject to a number of risks and uncertainties, many of which are beyond the Company's ability to control or predict, that may cause the actual results of the Company to differ materially from those discussed in the forward-looking statements. Factors that could cause actual results or events to differ materially from current expectations include, among other things, without limitation, failure to meet expected, estimated or planned gold and niobium production, cash costs, margin expansion, capital expenditures and exploration expenditures and failure to establish estimated mineral resources, the possibility that future exploration results will not be consistent with the Company's expectations, changes in world gold markets and other risks disclosed in IAMGOLD's most recent Form 40-F/Annual Information Form on file with the United States Securities and Exchange Commission and Canadian provincial securities regulatory authorities. Any forward-looking statement speaks only as of the date on which it is made and, except as may be required by applicable securities laws, the Company disclaims any intent or obligation to update any forward-looking statement.

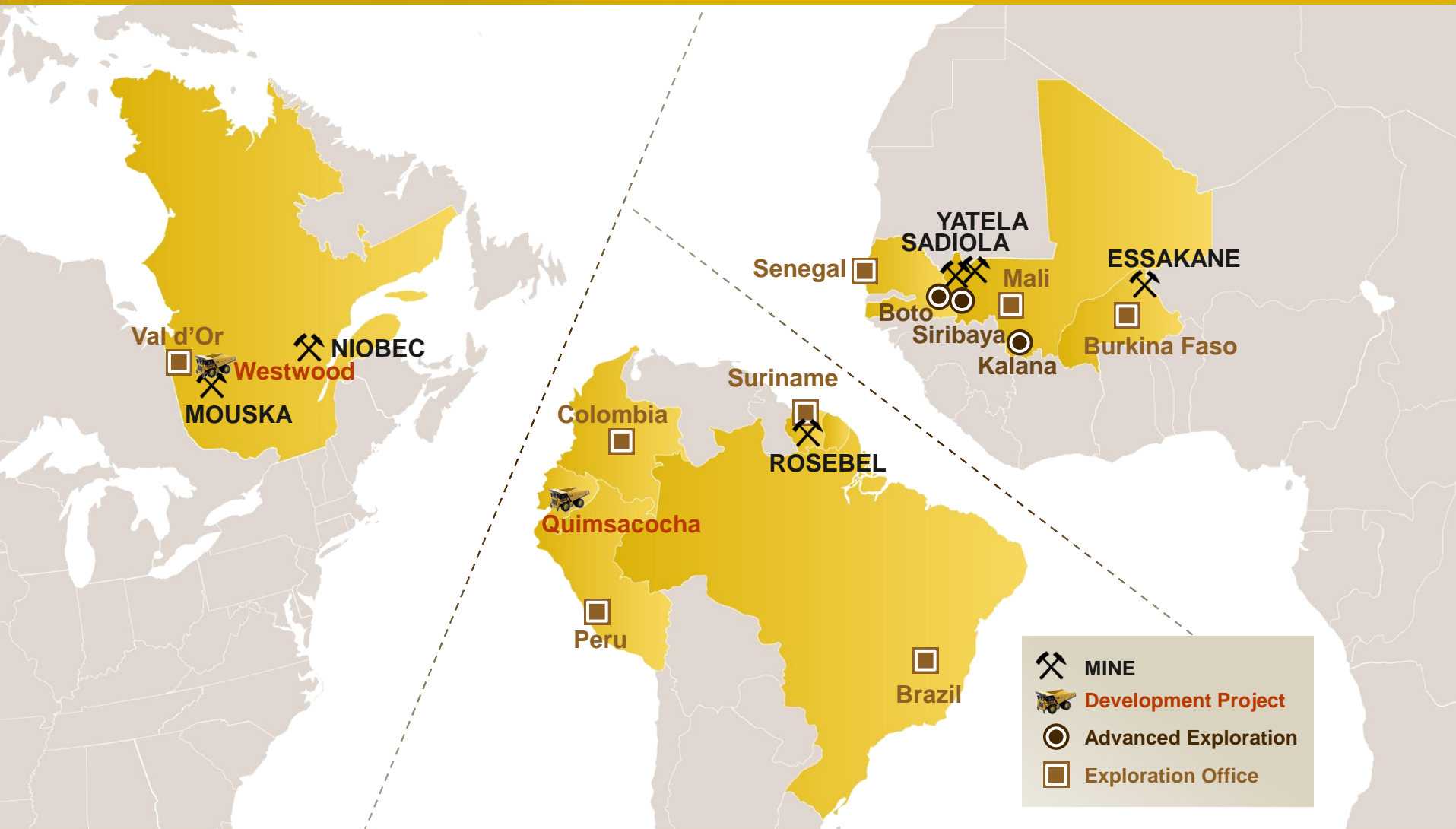
The United States Securities and Exchange Commission (the "SEC") permits mining companies, in their filings with the SEC, to disclose only those mineral deposits that a company can economically and legally extract or produce. We use certain terms in this presentation, such as "mineral resources", that the SEC guidelines strictly prohibit us from including in our filings with the SEC. U.S. investors are urged to consider closely the disclosure in the IAMGOLD Annual Report on Form 40-F. A copy of the most recent Form 40-F is available to shareholders, free of charge, upon written request addressed to the Investor Relations Department.

Total Resources includes all categories of resources unless indicated otherwise.

All currency numbers are in US\$ unless otherwise stated.



IAMGOLD's Platform – High Quality, Long-Life Assets



The Transformation of IAMGOLD - Operations

Focus on core assets we own and operate to improve productivity and capital deployment

2010's IAMGOLD

8 Gold Assets

⚡ Rosebel	⚡ Sadiola
⚡ Essakane	⚡ Yatela
⚡ Mouska	⚡ Tarkwa
⚡ Mupane	⚡ Damang

✓ Sold Tarkwa & Damang interests and Mupane in 2011

Transformed IAMGOLD

5 Gold Assets

⚡ Rosebel	⚡ Sadiola
⚡ Essakane	⚡ Yatela
⚡ Mouska/Westwood	

Expand Niobec to maximize return/ unlock value



- 4.5 Mkg niobium/year
- Mine life 16 yrs

✓ Pre-feasibility study confirmed PEA to triple annual production and mine life



- 13.5 Mkg niobium/year
- Mine life 46 yrs

Unlock value of Rare Earth Elements (REEs)

Various REE drill campaigns in 1980s

✓ Discovered largest REE deposit outside China

Inferred resource of 467 Mt, containing 7.7 Bkg TREO

The Transformation of IAMGOLD - Financials

Strengthen
balance sheet to
maximize
financial
flexibility

2010's IAMGOLD

\$271M: Cash & Cash
Equivalents
\$141M: Gold Bullion at
market

✓ **Cash balances
enhanced through
sale of non-strategic
assets**

Transformed IAMGOLD

\$1,052M: Cash & Cash
Equivalents
\$211M: Gold Bullion at
market

Improve liquidity
to enhance
financial
flexibility

\$350M: Credit Facility
\$76M: Marketable
Securities

✓ **Exploited solid
balance sheet and
cash flow to
increase overall
liquidity**

\$500M: Credit Facility
\$250M: Niobec Credit
\$118M: Marketable
Securities

Improve return to
shareholders

\$0.08 per share dividend



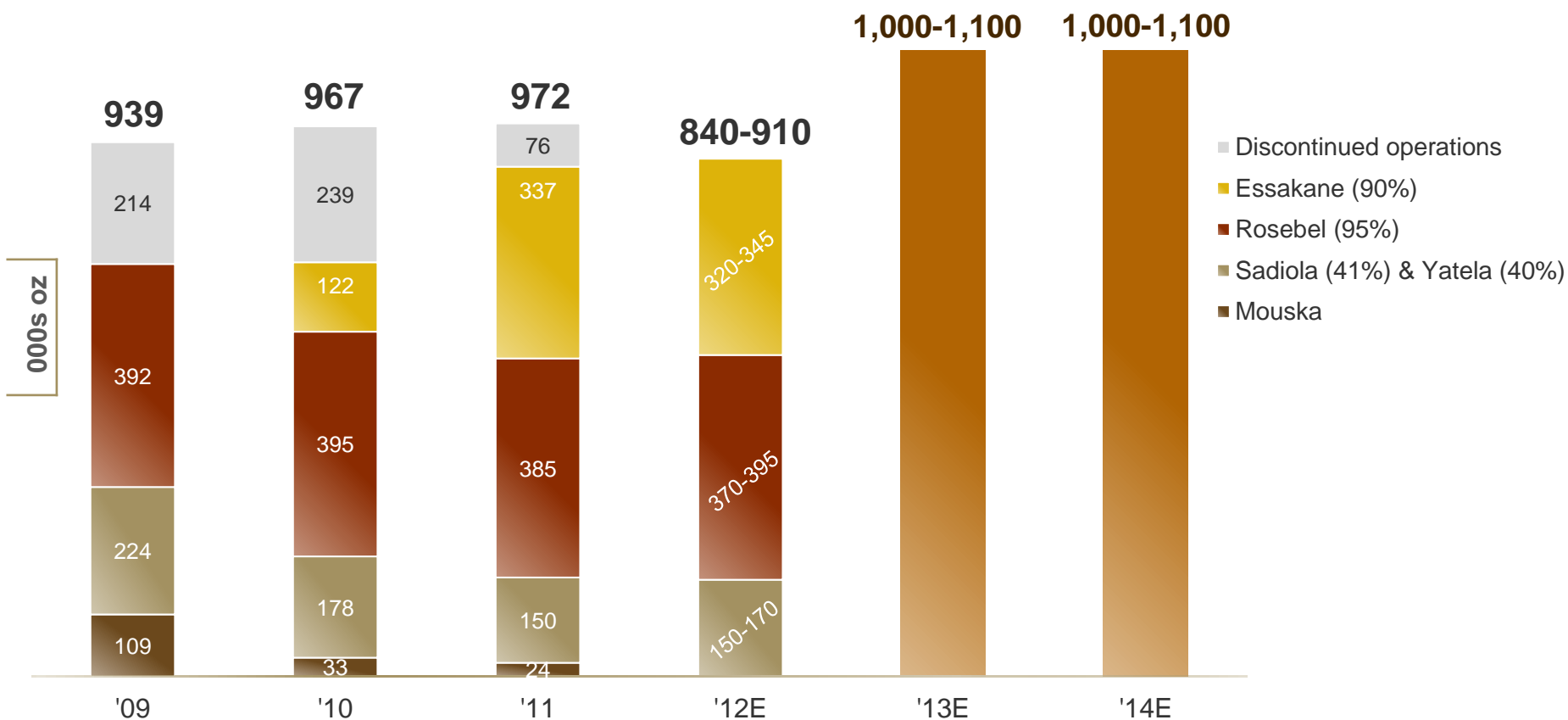
✓ **Increased dividend
312%**

\$0.25 per share dividend

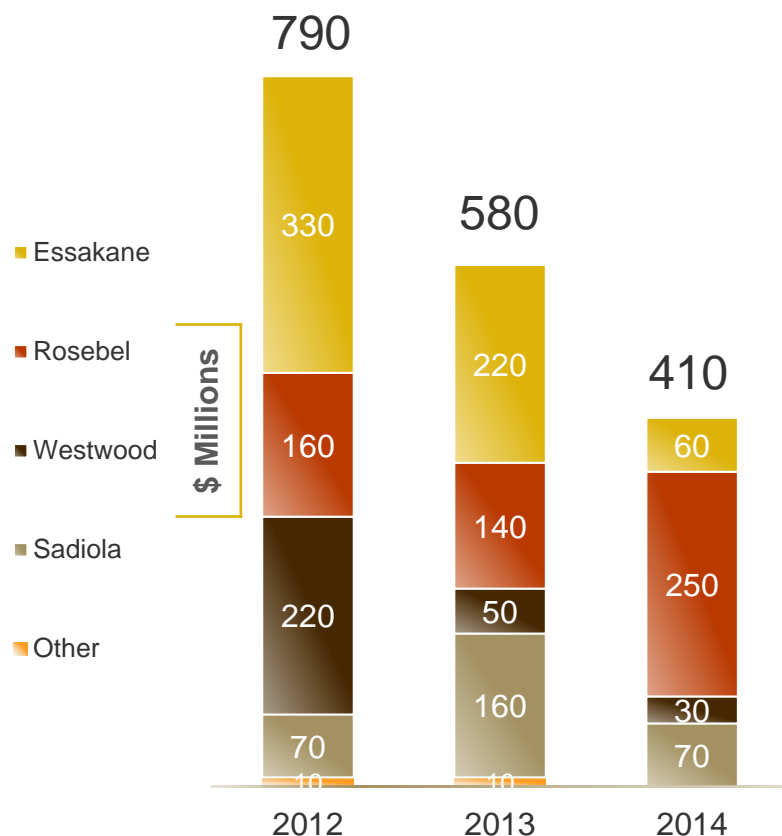


Gold Production Forecast

Gold production attributable to IAMGOLD



Planned Capital Expenditures for Gold Operations



Capital expenditure include sustaining capital, maintenance capital and capitalized stripping.

2012 Capital Expenditure

Essakane	<ul style="list-style-type: none"> › Additional water storage pond and river diversion › Additional power generation for hard ore
Rosebel	<ul style="list-style-type: none"> › Crushing & grinding circuit expansion, resource development › \$24M sustaining capital › Includes \$34 million of carry-over from 2011
Sadiola	<ul style="list-style-type: none"> › Assumes positive production decision for Sadiola Sulphides project › \$10M sustaining capital
Westwood	<ul style="list-style-type: none"> › Deepening shaft, developing drift levels for future mining and building up ore stockpile in 2012, and mill refurbishment

\$millions

Capitalized Stripping

	2012	2013	2014	Total 3 years
Essakane	50	40	40	130
Rosebel	-	20	50	70
Sadiola	15	50	50	115
Total	65	110	140	315



Essakane Update

2011 Achievements

- › Capital expenditures of \$104.5M
- › Attributable production of 337,000 ozs
- › Detailed economic study to expand mine capacity completed Jan.'12
- › Constructed additional bulk water storage pond to mitigate risk of future water shortage

Expansion

- › To double processing of hard rock to 10.8 Mtpa (vs. 5.4 Mtpa)

2012 Outlook

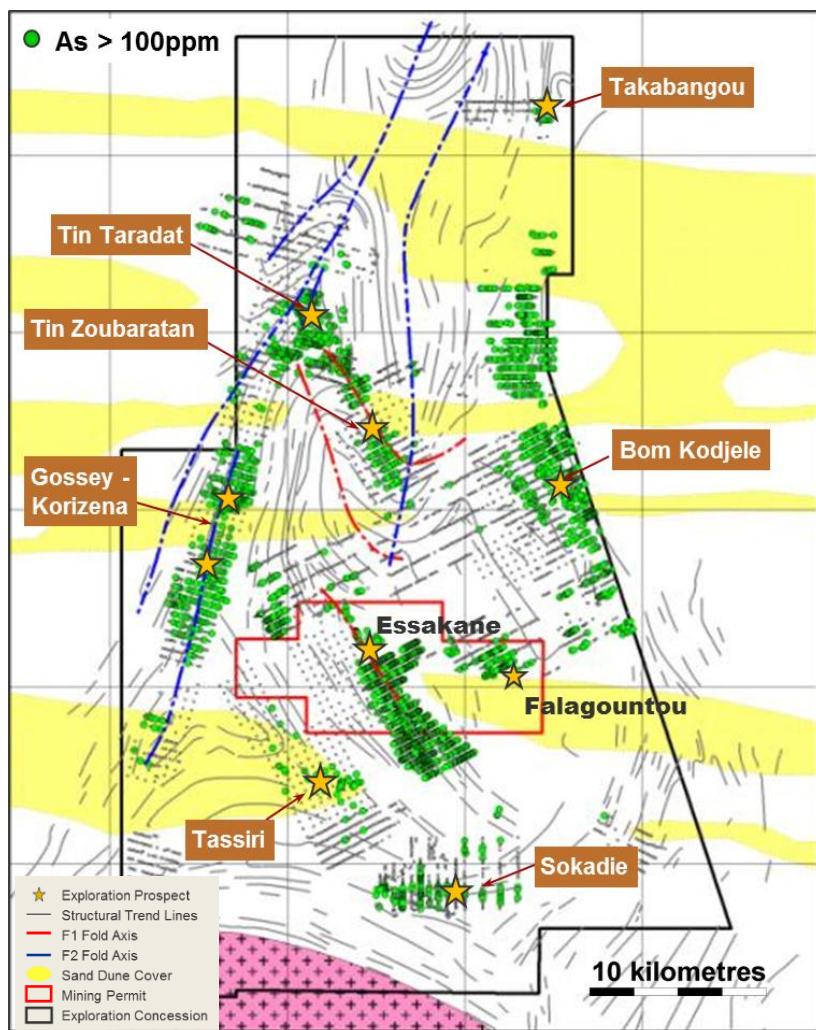
- › Capital expenditures (E): \$330M
- › Attributable Production (E): 320,000-345,000 ozs
- › Construction to begin in early 2012



<i>As at December 31, 2011</i>	Tonnes (millions)	Grade (g/t Au undiluted)	Contained Au (000s oz)
Probable Reserves	109.2	1.1	3,472
Measured Mineral Resource ¹	-	-	-
Indicated Mineral Resource ¹	139.6	1.1	4,262
Inferred Mineral Resource ¹	24.1	1.1	797
Mine Life	14 years		
Average Annual Gold Production	350,000 oz		
Expansion Capital Expenditures (2011-14)	\$362 million		
Sustaining Capital (life of mine)	\$69 million		
Average Gold Price Assumption	\$1,200 per oz		
¹ Indicated Mineral Resources are inclusive of Probable Reserves			



Essakane Exploration



210,000+ m of RC and DD drilling planned in 2012

Focus of the drilling program will be split between:

- › a resource definition program at Falagountou
- › An in-fill program at Essakane north



Rosebel Update

2011 Achievements

- › Capital expenditures of \$73M
- › Attributable production of 385,000 ozs
- › Announced mine expansion project
- › Signed Heads of Agreement with Gov't of Suriname to expand and incorporate satellite resources

Expansion

- › Optimization for mill throughput to be maintained at 12-14 Mtpa even with increased hard rock volumes

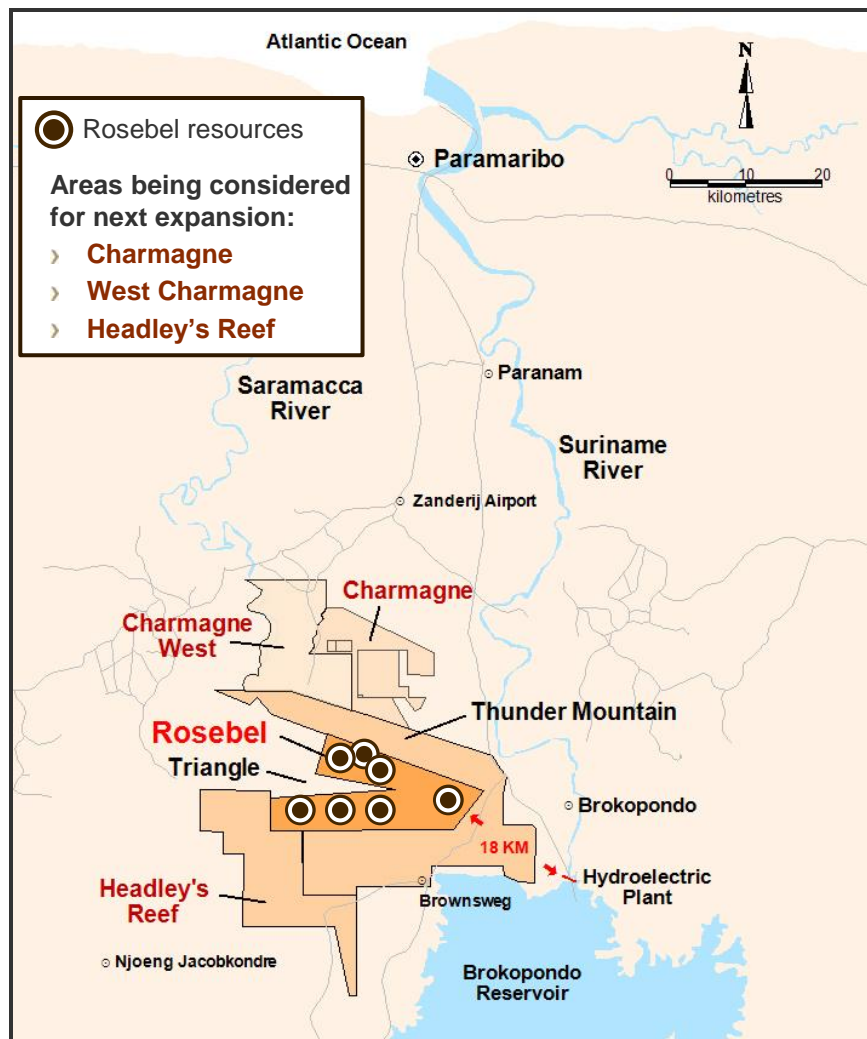
2012 Outlook

- › Capital expenditures (E): \$160M
- › Production (E): 370,000-395,000 ozs
- › Feasibility study in greater design detail on expansion
- › Definitive agreement with Gov't of Suriname expected later in 2012



<i>As at December 31, 2011</i>	Tonnes (millions)	Grade (g/t)	Attributable Contained ounces (000s oz)
Proven Reserves	102.4	1.0	3,155
Probable Reserves	84.0	1.0	2,575
Measured Mineral Resource ¹	158.0	1.0	4,607
Indicated Mineral Resource ¹	105.1	1.0	3,112
Inferred Mineral Resource ¹	13.9	0.7	278
Mine Life	11+ years		
2011 Annual Gold Production	385,000 ounces		
Capital Expenditures (2012-14) <i>(includes project capital, sustaining capital and capitalized stripping)</i>	\$550 million		
¹ Measured & Indicated Mineral Resources are inclusive of Probable Reserves			

Future Expansion Potential at Rosebel is Significant



- Announced Heads of Agreement with Government of Suriname on Dec. 21'11 to support significant expansion at Rosebel



Sadiola/Yatela Update

2011 Achievements

- › Capital expenditures of \$23.2M
- › Attributable production of 121,000 ozs
- › \$34M dividend to IAMGOLD
- › Sadiola Sulphide feasibility study completed, awaiting approval by joint venture partner
- › Permits in place to begin construction

Sadiola Sulphide Project

- › 2012: construction decision
- › 2013: pre-stripping of the main pit to access underlying sulphides
- › 2014: project completion and start-up of new process plant
- › Expansion Capex: 2012-2014 is \$150M

2012 Outlook

- › Sadiola/Yatela attributable production (E): 150,000-170,000 ozs
- › Advance closure planning for Yatela



<i>As at December 31, 2011</i>	Tonnes (millions)	Grade (g/t)	Attributable Contained ounces (000s oz)
Proven Reserves	10.4	2.1	280
Probable Reserves	96.7	1.6	2,018
Measured Mineral Resource ¹	21.9	1.4	393
Indicated Mineral Resource ¹	150.1	1.6	3,078
Inferred Mineral Resource	45.0	1.6	926
Mine Life (with expansion)	15 years		
Average Gold Production (with expansion)	350,000 - 450,000 ozs		
Expansion Capital Expenditures (2012-2014)	\$150 million		
Sustaining Capital (2012-2014)	\$35 million		
¹ Measured & Indicated Mineral Resources are inclusive of Probable Reserves			

Westwood Update

2011 Achievements

- › Project and exploration expenditures of \$134M
- › Completion of: fire detection system, new pump house, waste silo
- › Commencement of ground support in the 6 m diameter ventilation shaft
- › Shaft sinking reached 1,455 m
- › Underground development totaled 9,315 m of lateral and vertical

2011 Exploration

- › 75,000 m+ diamond drilling at cost of \$9.6M
- › Additional confidence in inferred resources and remaining exploration potential

2012 Outlook

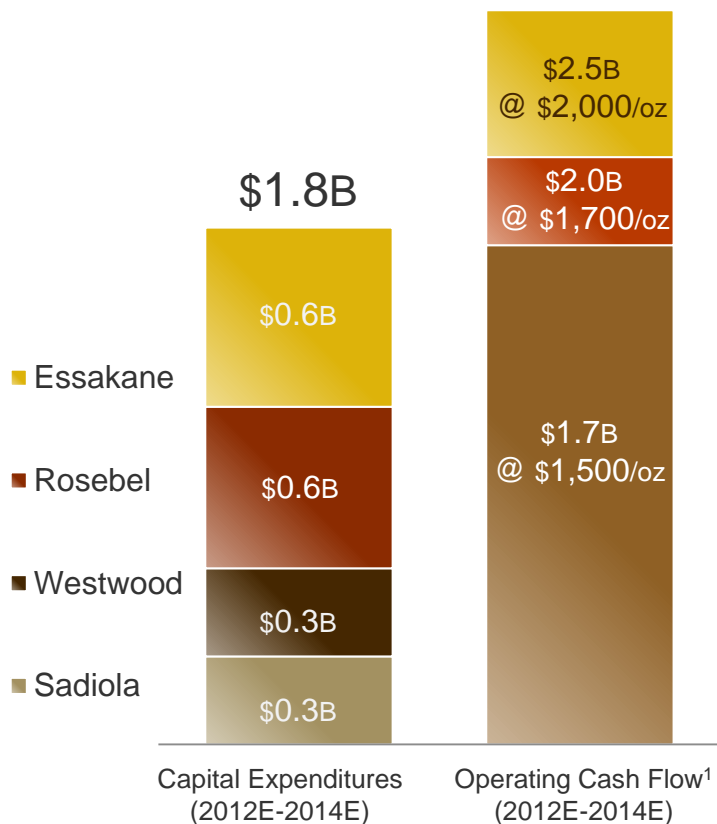
- › Project cost (E): \$198.3M (after tax credits)
- › Infrastructure preparation and construction
- › Shaft sinking to depth of 1,954 m
- › Mining method changed from planned long-hole open stoping to primarily cut and fill mining to lower production and technical risk

Classification	Tonnes (millions)	Grade (g/t Au undiluted)	Contained Au (000s oz)
Indicated Mineral Resource ¹ (Warrenmac)	0.2	8.6	60
Indicated Mineral Resource ¹ (Zone 2 Westwood)	0.6	13.8	248
Inferred Mineral Resource	9.4	11.3	3,407
Total Recovered Gold		3,480,070 oz	
Mine Life		19 years	
Average Annual Gold Production		190,000 oz	
Average Cash Cost		\$533 per oz	
Total Pre-production Capital ²		\$518 million	
Sustaining Capital (life of mine)		\$529 million	
Operating Cash flow (after-tax)		\$1,717 million	
Estimated IRR (after-tax)		9-11%	
Canadian/US Exchange Rate (2012 - 1.00)		1.05	
Average Gold Price Assumption		\$1,249 per oz	
(1) Mineral resources as of May 2011 are calculated at an undiluted 6 g/t Au cutoff grade at a minimum two metre width; panel grades of individual lenses are capped at 15 g/t			
(2) Includes remaining capital of \$198 million (after tax credits) for 2012.			



Funding for Growth Initiatives

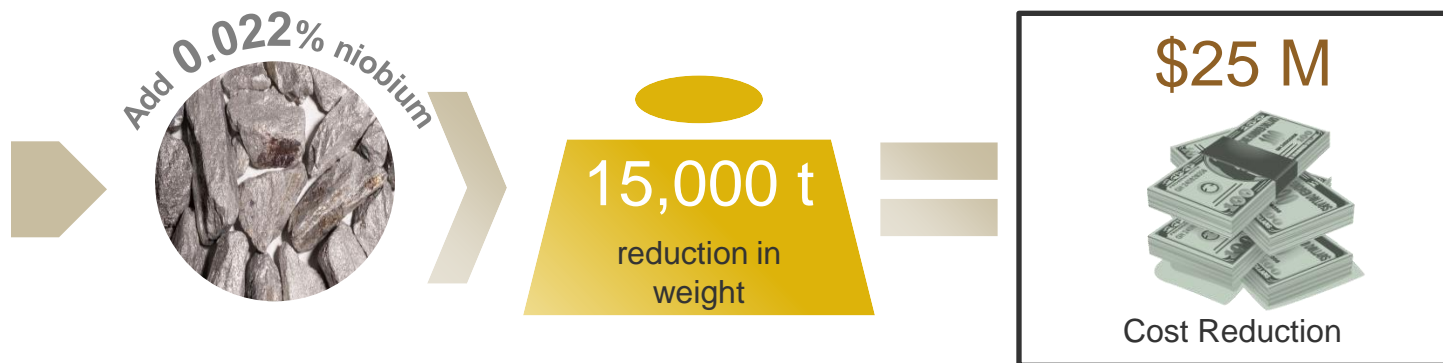
Gold Operations



¹Operating Cash Flow net of Corporate G&A and Exploration



Niobium Provides Significant Benefits to Steel Industry



Niobec Update

2011 Achievements

- › Capital expenditures of \$61.3M
- › Positive results from pre-feasibility study on expansion project
- › Established a financing framework to fund expansion (\$250M line of credit established February 2012)

Block cave expansion

- › Triple niobium production, Improve margins
- › Feasibility study expected to be completed mid 2013
- › Capex
 - 2013: \$90M
 - 2014: \$220M
 - 2015: \$291M
 - 2016: \$375M
 - \$976M

2012 Outlook

- › Proceeding with Feasibility Study based on Block Caving

Key Metrics of the Niobec Expansion Pre-Feasibility Study under the Block Cave Scenario

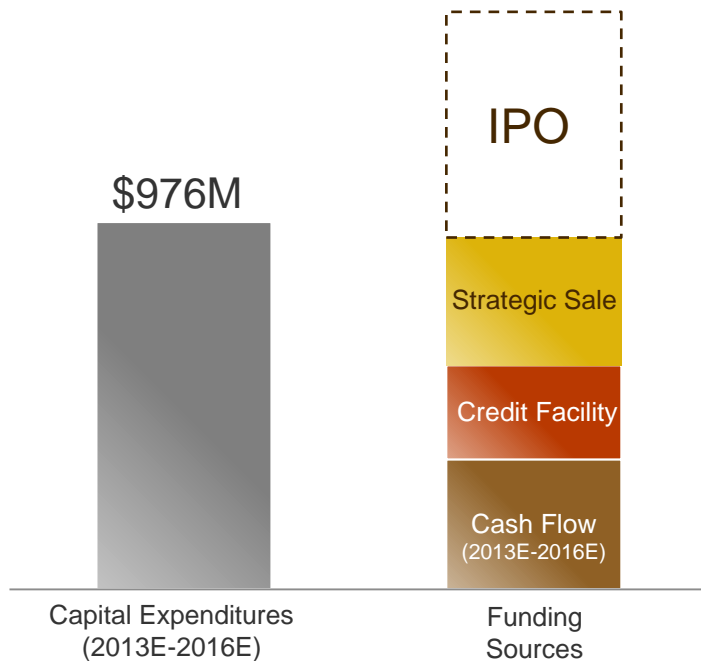
Classification	Tonnes (millions)	Grade (%Nb ₂ O ₅)	Contained Nb ₂ O ₅ (million kgs)
Probable Reserves	419.2	0.42%	1,746
Measured Mineral Resource ¹	235.3	0.44%	1,028
Indicated Mineral Resource ¹	250.2	0.39%	986
Inferred Mineral Resource	155.4	0.35%	547
NAV (After-tax)			\$1.6-\$1.8 billion
Total Recovered Niobium			576 million kg Nb
Mine Life (does not include all resources)			46 years
Average Annual Niobium Production (post expansion)			13.5 million kg Nb
Mining Cost			\$17 per kg Nb
Operating Margin			\$28 per kg Nb
Pre-production Capital Expenditures			\$976 million
Growth and Sustaining Capital over 46 years			\$965 million
Operating Cash flow (pre-tax)			\$15.2 billion
Estimated IRR (after-tax)			17-19%
Canadian/US Exchange Rate (2012 – 1.00)			1.05
Niobium Price Assumption			\$45 per kg Nb

1) Measured and indicated resources are 98% inclusive of probable reserves. Under the block caving scenario around 2% of the measured and indicated resources included in the probable reserves are slightly below the cutoff of 0.20% Nb₂O₅ per tonne (before recovery) used for resource reporting. This material represents only 5.8 million tonnes averaging 0.18% Nb₂O₅ for 10 million kilograms of Nb₂O₅ contained.



Funding for Niobec Expansion

Niobium Operation

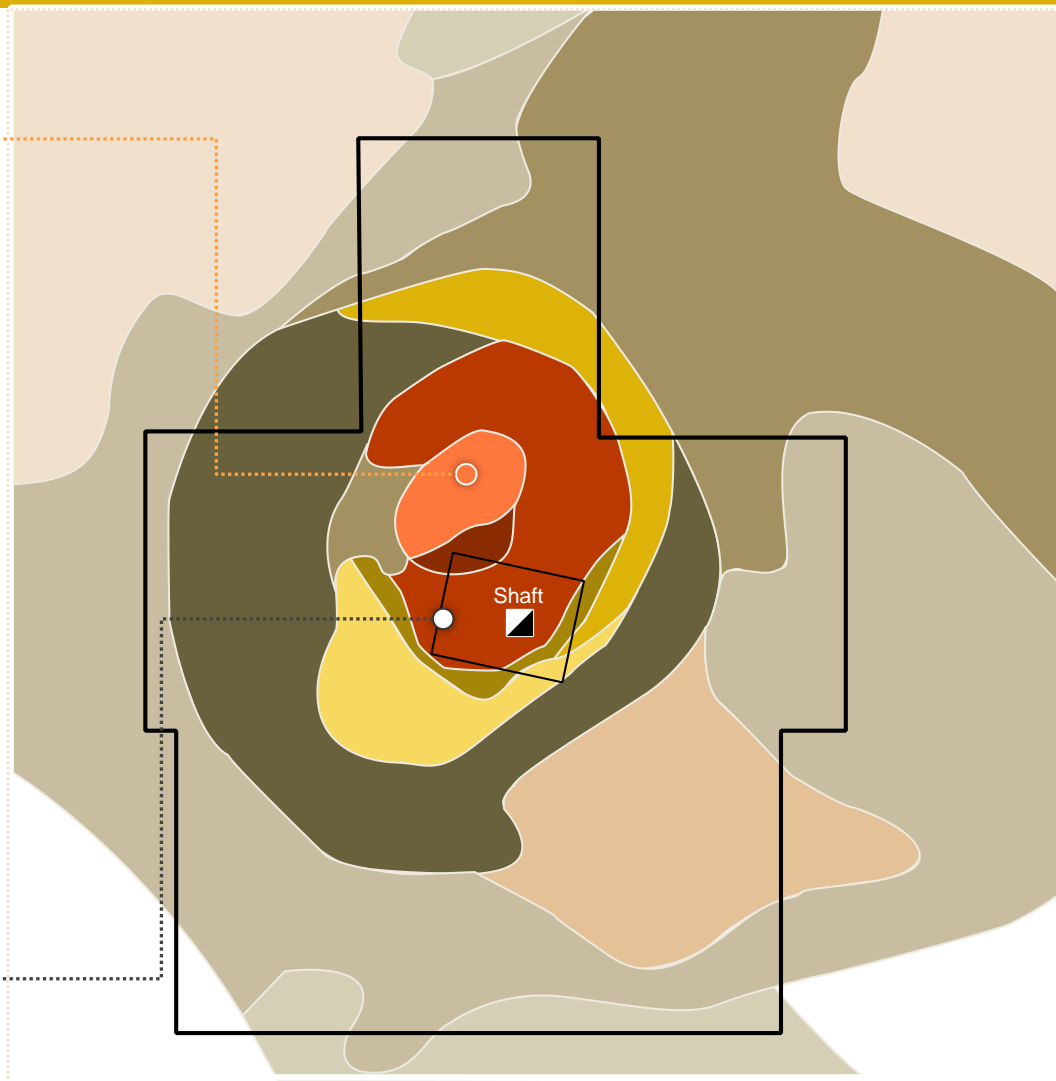


Rare Earth Inferred Resource: 467 Million Tonnes

Rare earth element (REE) zone

- Grade 1.65% Total Rare Earth Oxides (TREO)
- 7.7 Bkg TREO
- 98% Light REEs, including
 - › Cerium (47.9%)
 - › Lanthanum (24.5%)
 - › Neodymium (18.4%)
- 2% Heavy REEs
- Potential development would be self-funded

Niobec mine



Speed to Market Advantage



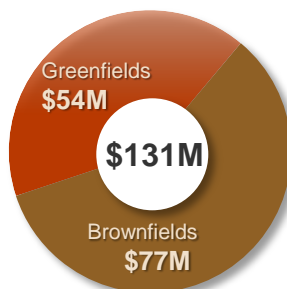
- Adjacent to Niobec
- Mining friendly jurisdiction
- Excellent community relations
- Very competitive hydro power rates (~\$0.045 per kWh)
- Existing road and rail infrastructure
- Close proximity to deep water ports with ocean access

Source on Power: Technical Report on Expansion Options at the Niobec Mine, June 17, 2011, compiled by Roscoe Postle Associates Inc.



2012 Exploration Program

2012 Exploration Budget



Quebec

Senegal

Mali

Burkina Faso

Colombia

Suriname

Peru

Brazil

- 20 projects various stages
- Planned drilling: 670 km

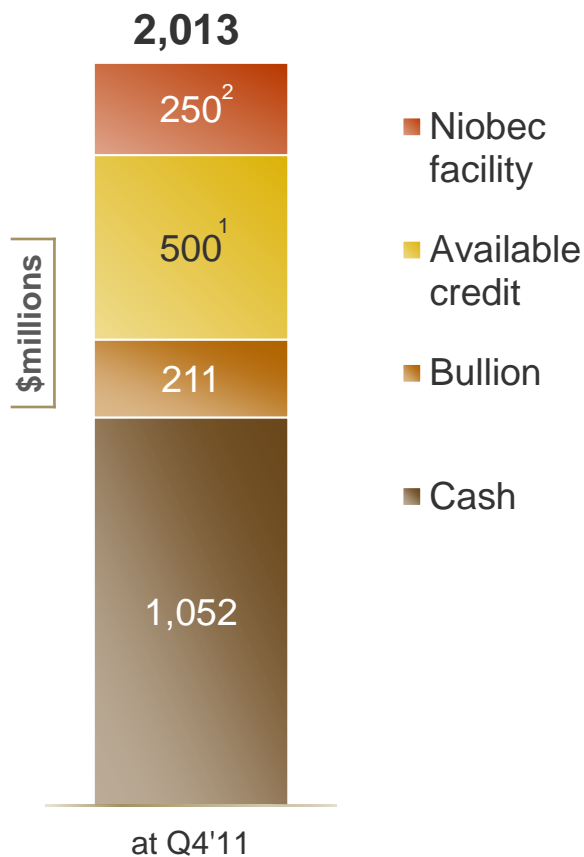
(core and RC drilling across 20 early to late stage exploration projects and the Company's four mines and development projects)

■ Exploration Office



Strong Balance Sheet

Financial Position



■ **\$2.0B available**

■ **Significant positive cash flow**

■ **\$1B shelf prospectus**

■ **Zero debt**

¹Increased to \$500M Feb.'12

²New Niobec facility established Feb.'12



Proven Acquisition Strategy

Track Record of Building Value

Cost of Acquisitions	Capital Spend
\$1.9B	\$1.5B

Asset Sales	Operating Cash Flow	2011 Analyst Consensus NAV of Assets acquired by IAMGOLD (as at Feb.'12)
\$0.9B	\$1.8B	~ \$8.0B

Asset sales include Mupane, Tarkwa & Damang

Generated from acquired assets up to Dec. 31, 2011

■ Acquisitions from 2003-2009

- › Essakane
- › Rosebel
- › Doyon/Mouska/Westwood
- › Niobec
- › Mupane
- › Tarkwa & Damang

■ Prospective exploration lands

Acquisition Criteria

ESTABLISHED PRESENCE

- > Regional continuity
- > Social and fiscal stability
- > Long-term prospectivity and opportunities

150,000+ oz of gold/yr

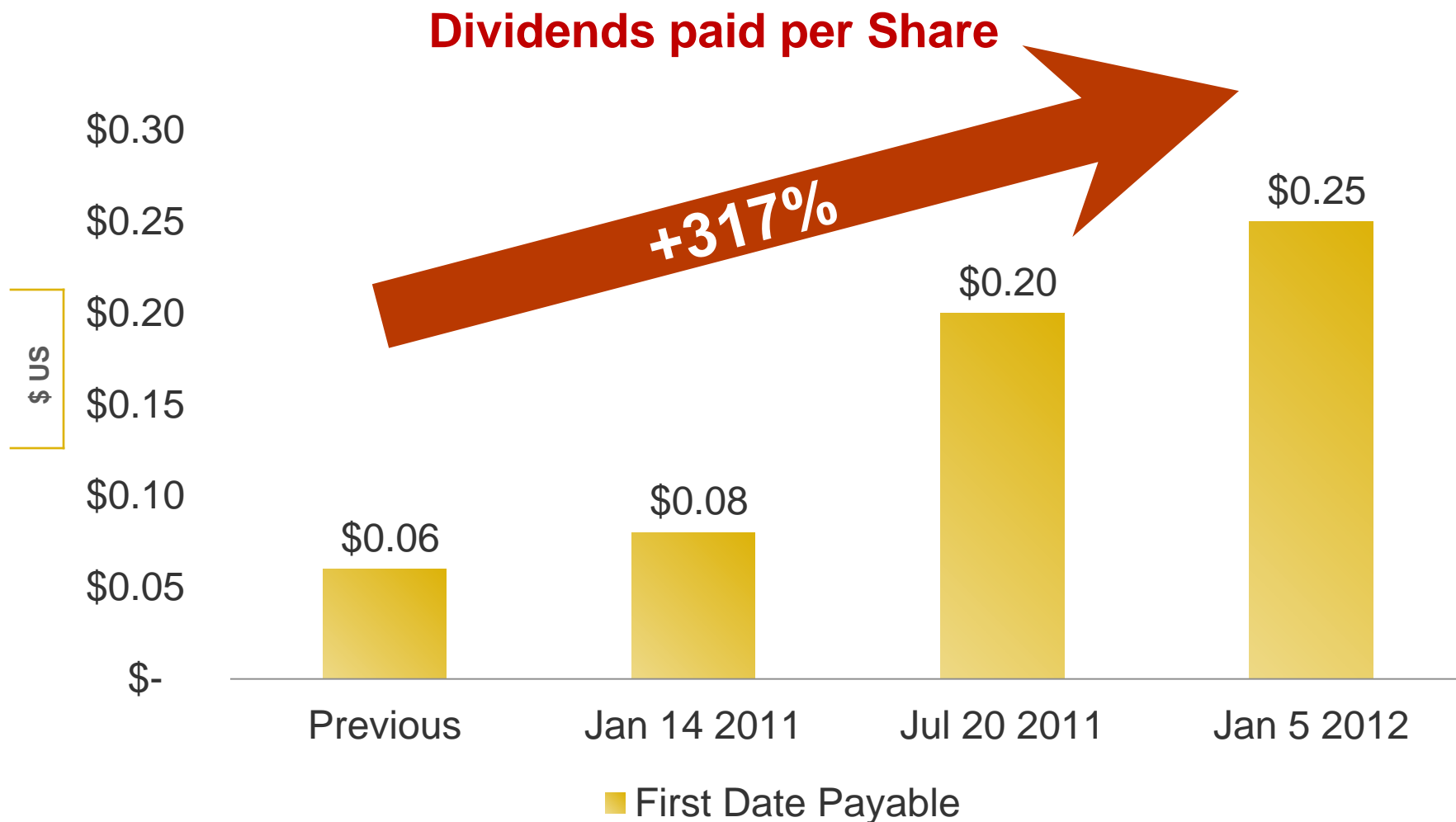
2,000,000+ oz Reserves

VARIOUS STAGE PROJECTS

- > Operating Mine
- > Development Project
- > Exploration



Dividends have increased 317% since December 2010



Conduct Governed by Zero Harm Framework



Growth Strategy



Expand and optimize existing mines



Increase productivity



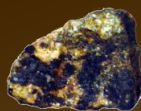
Pursue exploration plays



Evaluate acquisition opportunities



Surface full value of Niobec



Exploit rare earth potential





Appendix

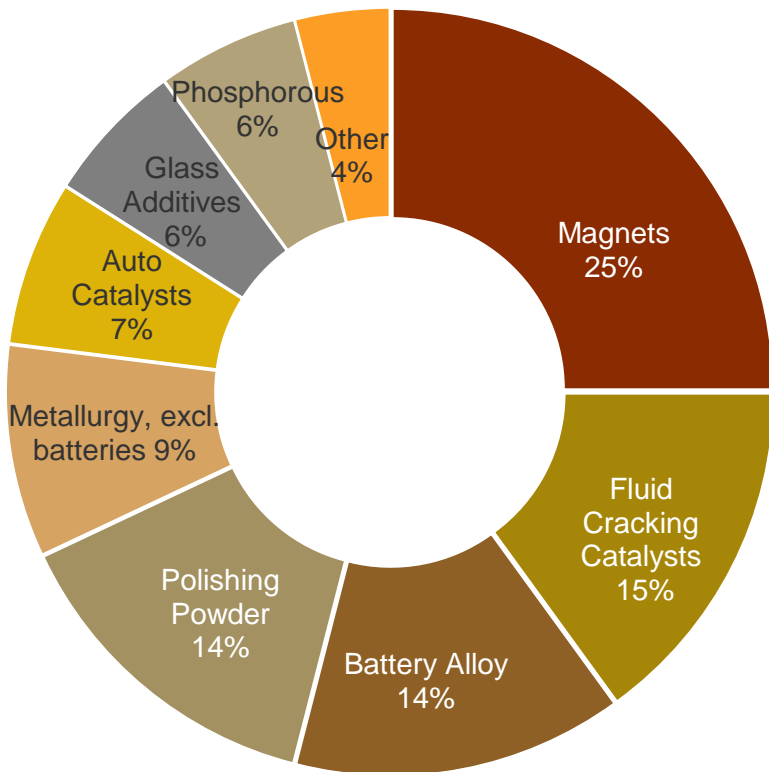


TSX: IMG NYSE: IAG

 **IAMGOLD[®]**
CORPORATION

Rare Earths are Integral to a Wide Range of Fast Growing Markets

REO Usage by Industry
(2010E)



2012 Greenfield Exploration: West Africa

⚡ Essakane

- › Continued evaluation of near-mine satellite prospects
- › Oxide targets prioritized
- › 92,000 m diamond and RC drill program
- › 35,000 m air-core drill program

⦿ Siribaya JV (50% IAMGOLD)

- › 60,000 m diamond and RC drill program
- › Finalize first phase exploration of two regional mineralized corridors (Siribaya and Bambadinka trends)

⦿ Kalana JV

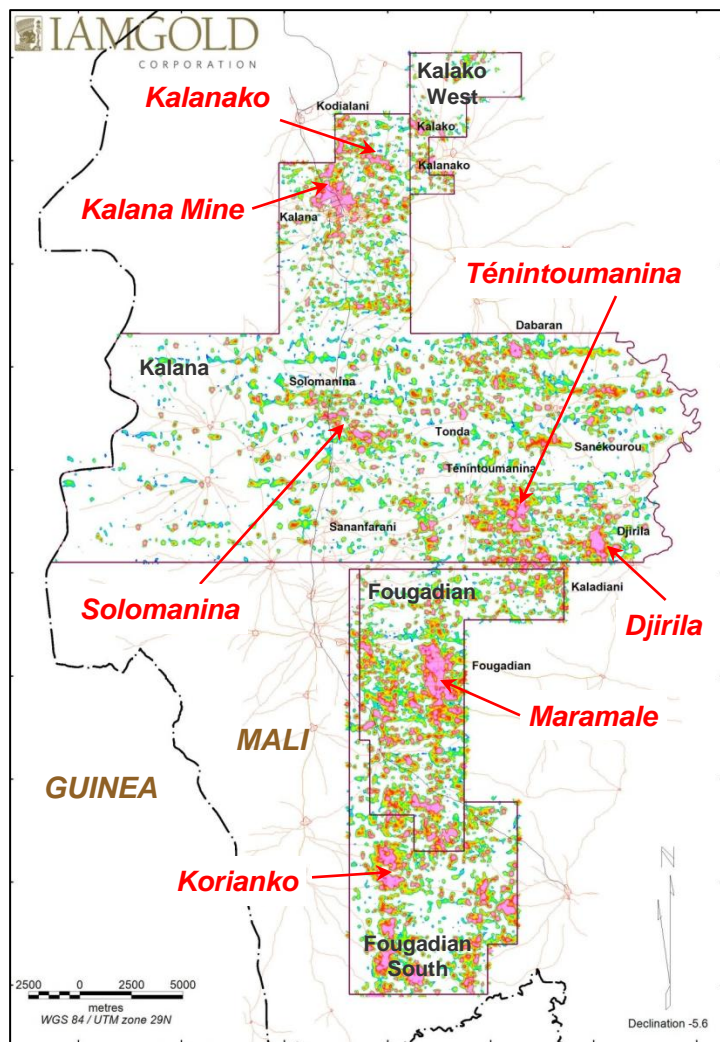
- › 60,000 m diamond and RC drilling planned
- › Complete initial resource estimate by Q3 2012
- › Assess resource potential of satellite targets

⦿ Boto

- › 7,000 m diamond drill program to confirm grade continuity and extend known mineralization zones



Kalana Project, Mali: 2012 Exploration Program



■ Kalana Mining Permit (387 km²) + Kalako West (21 km²)

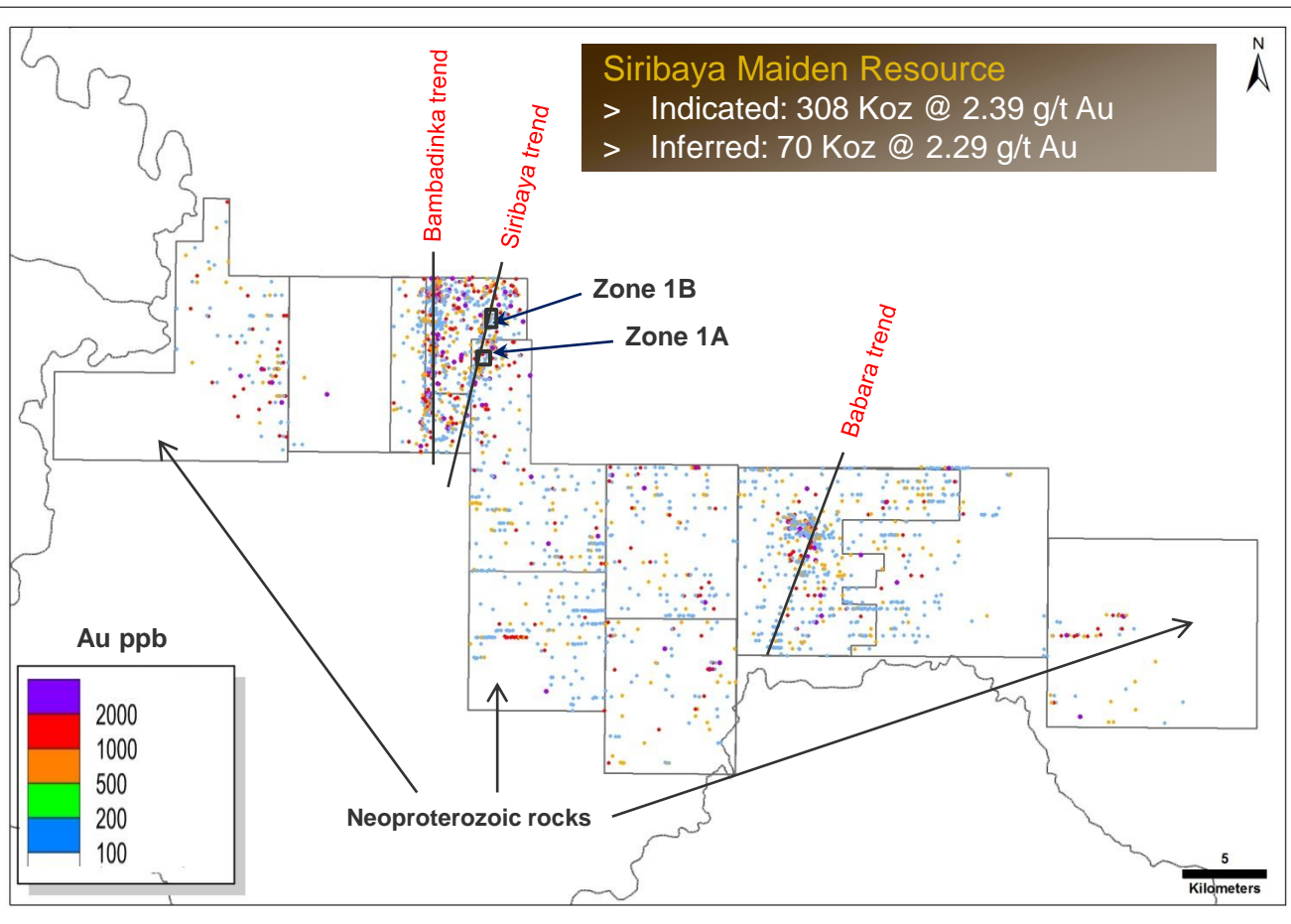
- › Avnel - IMG Option Agreement (Aug 2009)
- › \$11.2 M exploration budget
- › 20,000 m DD and 40,000 m RC drilling planned
- › Complete initial resource estimate by Q3 2012
- › Assess resource potential of Djirila and Ténintoumanina satellite targets

■ Fougadian Exploration Permits (147.5 km²)

- › Avnel - IMG Option Agreement (Dec 2010)
- › \$6.6 M exploration budget
- › 10,000 m DD and 30,000 m RC drilling planned to evaluate Maramale and Korianko targets

Siribaya Project, Mali: 2012 Exploration Program

Land Package 848 km²



Total : 20,145 termite mounds sampled

■ Merrex - IAMGOLD Option Agreement

- › IAMGOLD has earned 50% interest by spending C\$10.5M over 3 years

■ 2012 Exploration

- › \$5.9 M budget (matched by Merrex)
- › 10,000 m DD and 50,000 m RC drilling planned
- › Complete scoping of Siribaya and Bambadinka trends on wide-spaced drill fences
- › Infill encouraging 2011 drill results to confirm continuity of mineralization (Siribaya trend)

2012 Exploration: South America

Colombia

- › Continue to assess business development opportunities
- › Field evaluation of priority regional targets

Peru

- › 7,500 m drilling planned on two encouraging greenfields projects



Suriname Near-Mine

- › Aggressively test extensions to known mineralised trends
- › Assess resource potential of Koemboe prospect
- › Systematic mechanical auger drilling in areas of significant alluvial cover

Brazil

- › Follow-up drilling campaign to determine potential of mineralization system identified in Minas Gerais State
- › Continued reconnaissance of generative properties in Para State



MINE



Development Project



Exploration Office

2011 Acquisition of Exploration Interests in Colombia

Recent acquisitions of interest in companies active in Colombia:

● Bellhaven Copper & Gold

- › Superior grade Au-Cu porphyry
- › A1.5 Moz Aueq Inferred resource in La Cantera deposit
- › A second discovery in the Middle Zone
- › Multiple untested magnetic anomalies

● Colombia Crest

- › Drill-ready La Arabia Au-Cu porphyry target 10 km west of La Mina
- › Adjacent to Bellhaven's La Mina project
- › Large land position with multiple magnetic anomalies.



● Tolima Gold

Ancal

- › A perimeter play to Marmato

Nortol

- › Large land position in emerging orogenic gold belt with bonanza grade quartz veins

Remedios

- › 300 tpd operation on high grade veins has potential to provide early cash flow to Tolima

2012 Exploration: Canada

⚡ Niobec

- › Complete diamond drilling campaign to determine lateral limits of niobium mineralization
- › Resource definition drilling on REE Zone
- › Commence Scoping Studies on REE deposit

📦 Quebec Exploration

- › Advance exploration on the following high quality greenfields properties:
- › Bousquet-Odyno – 6,000 m drilling to determine resource potential
- › Lépine - Geophysics, targeted mapping and 3,000 m drilling
- › Porcupine - 3,000 m phase one drilling campaign
- › Lac Pau JV: 3,000 m winter drilling program on identified gold zones and extensions



2011 Reserves and Resources

GOLD OPERATIONS	Tonnes (000s)	Grade (g/t)	Attributable Contained Ounces (000 oz)
------------------------	--------------------------	------------------------	---

As at December 31, 2011

Proven & Probable Reserves	413,927	1.3	13,300
Measured & Indicated Resources ¹	590,594	1.3	18,198
Inferred Resources	95,157	2.4	5,789

NIOBIUM OPERATION	Tonnes (000s)	Grade Nb₂O₅ (%)	Contained Nb₂O₅ (million kg)
--------------------------	--------------------------	--	---

As at December 31, 2011

			(100%)
Probable Reserves	419,208	0.42	1,746
Measured & Indicated Resources ²	485,502	0.41	2,014
Inferred Resources	155,376	0.35	547

RARE EARTH PROJECT	Tonnes (000s)	Grade TREO (%)	Contained TREO (million kg)
---------------------------	--------------------------	---------------------------	--

As at December 31, 2011

			(100%)
Inferred Resources	466,800	1.65	7,702

¹Measured and indicated resources are inclusive of proven and probable reserves. Mineral reserves and resources have been estimated in accordance with NI 43-101

²Measured and indicated resources are 98% inclusive of probable reserves. Under the block caving scenario around 2% of the measured and indicated resources included in the probable reserves are slightly below the cutoff of 0.20% Nb₂O₅ per tonne (before recovery) used for resource reporting. This material represents only 5.8 million tonnes averaging 0.18% Nb₂O₅ for 10 million kilograms of Nb₂O₅ contained.



Notes regarding reserves and resources

Cautionary Note to Investors Concerning Estimates of Measured and Indicated Resources

This presentation uses the terms "measured resources" and "indicated resources". We advise investors that while those terms are recognized and required by Canadian regulations, the SEC does not recognize them. Investors are cautioned not to assume that any part or all of mineral deposits in these categories will ever be converted into reserves.

Cautionary Note to Investors Concerning Estimates of Inferred Resources

This presentation also uses the term "inferred resources". We advise investors that while this term is recognized and required by Canadian regulations, the SEC does not recognize it. "Inferred resources" have a great amount of uncertainty as to their existence, and great uncertainty as to their economic and legal feasibility. It cannot be assumed that all or any part of an inferred mineral resource will ever be upgraded to a higher category. Under Canadian rules, estimates of inferred mineral resources may not form the basis of feasibility or pre-feasibility studies, except in rare cases. Investors are cautioned not to assume that part or all of an inferred resource exists, or is economically or legally mineable.

Scientific and Technical Disclosure

IAMGOLD is reporting mineral resource and reserve estimates in accordance with the CIM guidelines for the estimation, classification and reporting of resources and reserves.

Investors are cautioned not to assume that part or all of an inferred resource exists, or is economically or legally mineable.

A feasibility study is a comprehensive technical and economic study of the selected development option for a mineral project that includes appropriately detailed assessments of realistically assumed mining, processing, metallurgical, economic, marketing, legal, environmental, social and governmental considerations together with any other relevant operational factors and detailed financial analysis, that are necessary to demonstrate at the time of reporting that extraction is reasonably justified (economically mineable). The results of the study may reasonably serve as the basis for a final decision by a proponent or financial institution to proceed with, or finance, the development of the project. The confidence level of the study will be higher than that of a Pre-Feasibility Study.



2012 Guidance

Attributable gold production

2012 Guidance (000s ounces)

Rosebel	370-395
Essakane	320-345

Mines owned and operated by IAMGOLD	690-740
--	----------------

Sadiola and Yatela	150-170
--------------------	---------

Total Production	840-910
-------------------------	----------------

Cash Costs (\$/oz)	\$670-695
--------------------	-----------

Niobium Production (MKg)	4.6-5.1
--------------------------	---------

Niobium Operating Margin (\$/kg)	\$15-17 /kg
----------------------------------	-------------



Management Team



Steve Letwin

President & Chief Executive Officer



Gordon Stothart

Executive Vice President &
Chief Operating Officer



Carol Banducci

Executive Vice President &
Chief Financial Officer

Bob Carreau

Senior Vice President, Health, Safety & Sustainability

Michael Donnelly

Senior Vice President, Exploration

Benjamin Little

Senior Vice President, Corporate Affairs

Denis Miville-Deschênes

Senior Vice President, Project Development

Paul Olmsted

Senior Vice President, Corporate Development

Jeffery Snow

Senior Vice President & Legal Counsel

Lisa Zangari

Senior Vice President, Human Resources





Maximizing Returns for Investors

April 18, 2012

401 Bay Street, Suite 3200 Toronto, ON M5H 2Y4 Canada 1-888-464-9999 www.iamgold.com

INVESTOR RELATIONS

Bob Tait, VP Investor Relations

T: 416 360 4743 C: 647 403 5520

Laura Young, Director, Investor Relations

T: 416 933 4952 C: 416 670 3815



TSX: IMG NYSE: IAG

 **IAMGOLD[®]**
CORPORATION